

Axle Unit Data Logsheet

CMIR 67291 TMC134

Note: This logsheet can be used for the following Axle tests: L-37, L-20 and Gear Spalling.

	Break	Turn
Initial	37.5	37.5
Hot	40	25
Cold	25	7.5
Without Axles	25	7.5
Pinion Only	20	7.5

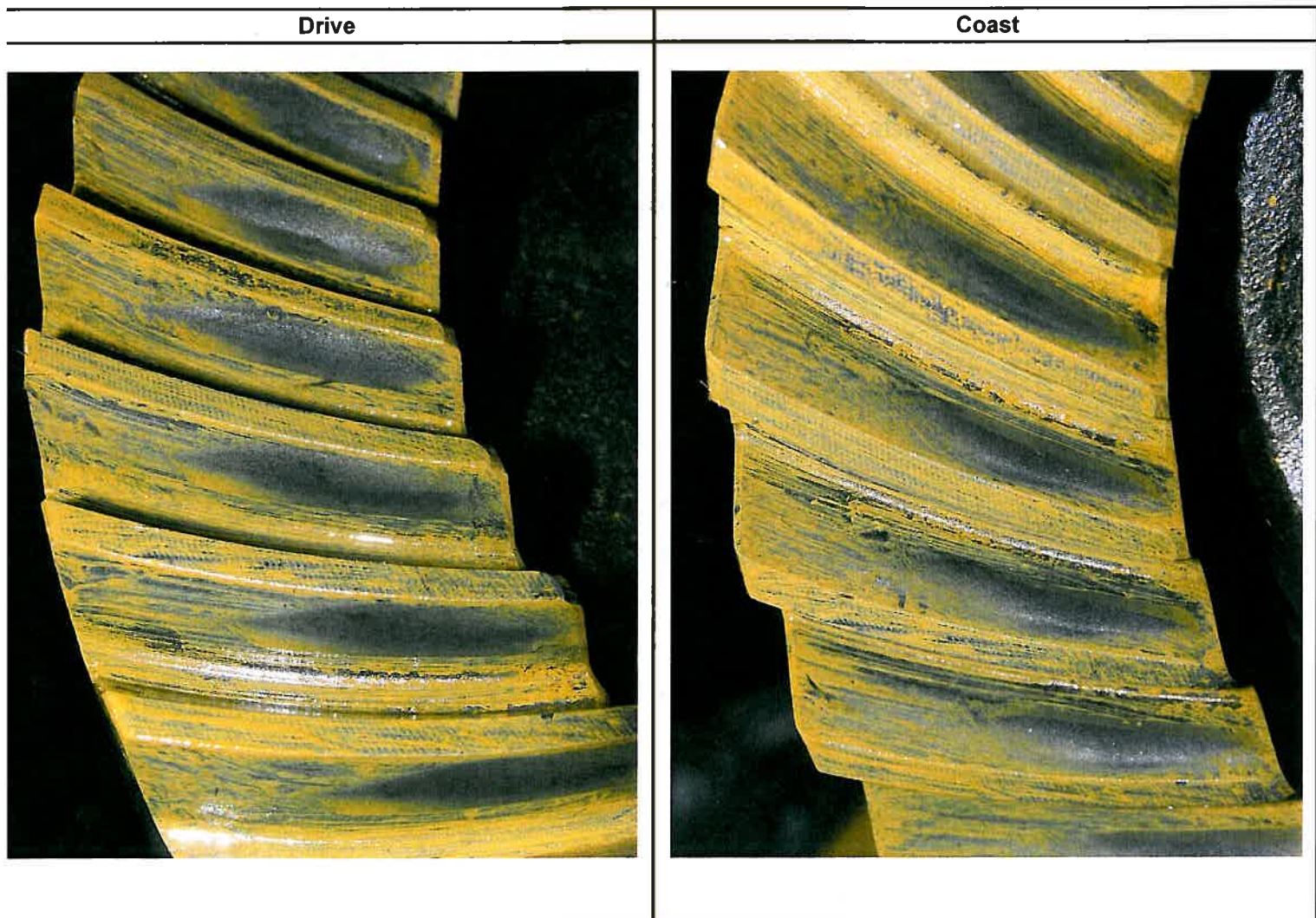
	Backlash	
	Initial	EOT
1	0.0075	.010
2	0.0060	.009
3	0.0055	.010
4	0.0060	.010
Avg.	0.0063	

TRN Number	TRN5DP333
Hardware ID	1P
Ring Batch ID	P4T883A
Pinion Batch ID	V1L528
Gear Test Type	Non-Lubrited
Axle Ass'y Date	208 09 A
Axle ID Number	ASTM0099A
Axle Serial No.	N/A
Pattern Contact	L2 F0
Agree Y/N?	Yes
Operator	LESC
Prep Date	07/30/09

	Tool ID #'s	
Initial	573-3C	563-114
EOT	573-3C	563-114
Mfg's Build Info		
Backlash	0.006	
R/T	30	

	Axle Cleaned
Oper.	JPK
Date	8/3/09

Comments _____



D6121 L-37

High Torque Test - STANDARD

Lubrizol Mechanical Test

Laboratory
Oil Code

LUBRIZOL

TRN Number
Test Number
EOT Date

**TRN5DDBBB
191-2870
20090804**

Pinion



Ring

