

PRE TEST

CMR Axle Unit Data Logsheet

067290

TMC 134

①

Note: This logsheet can be used for the following Axle tests: L-37, L-20 and Gear Spalling.

	Break	Turn
Initial	40.0	35.0
Hot	26.0	17.5
Cold	20.0	10.0
Without Axles	17.5	6.0
Pinion Only	15.0	5.0

	Backlash	
	Initial	EOT
1	0.0025	.008
2	0.0025	.0075
3	0.0020	.0075
4	0.0030	.008
Avg.	0.0025	

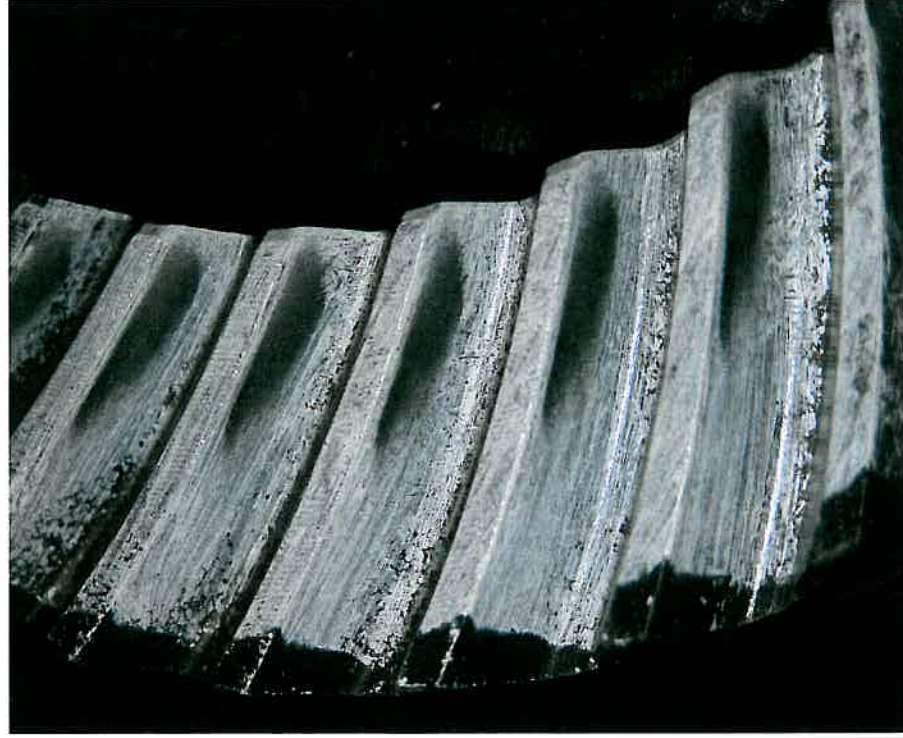
Tool ID #'s	
Initial	582-05 563-114
EOT	583-05 563-114 RAL
Mfg's Build Info	
Backlash	0.004
R/T	35.0

TRN Number	TRNub8298		
Hardware ID	1V		
Ring Batch ID	P4T813		
Pinion Batch ID	VLS00		
Gear Test Type	Non Lubrited		
Axle Ass'y Date	164-08-A		
Axle ID Number	060AA1002		
Axle Serial No.	KUSA04692		
Pattern Contact	L2 F+1		
Agree Y/N?	Yes		
Operator	JPK		
Prep Date	07/03/08		

Axle Cleaned	
Oper.	DD
Date	7-4-08

Comments **Non-Lubrited unapproved hardware for matrix testing**

Drive



Coast



D6121 L-37

High Torque Test - Standard

Lubrizol Mechanical Test

Laboratory

LUBRIZOL

Oil Code

067290

TRN Number

TRNW68ZPB

Test Number

191-2640

EOT Date

20080706

TMC-134

Pinion



Ring

