



# Axle Unit Data Logsheet

Pre Test CMIR 063271 TMC 155

Note: This logsheet can be used for the following Axle tests: L-37, L-20 and Gear Spalling.

		Break	Turn
Initial		35.0	35.0
E	Hot	30	27.5
	Cold	20	15
O	Without Axles	20	15
T	Pinion Only	15	10

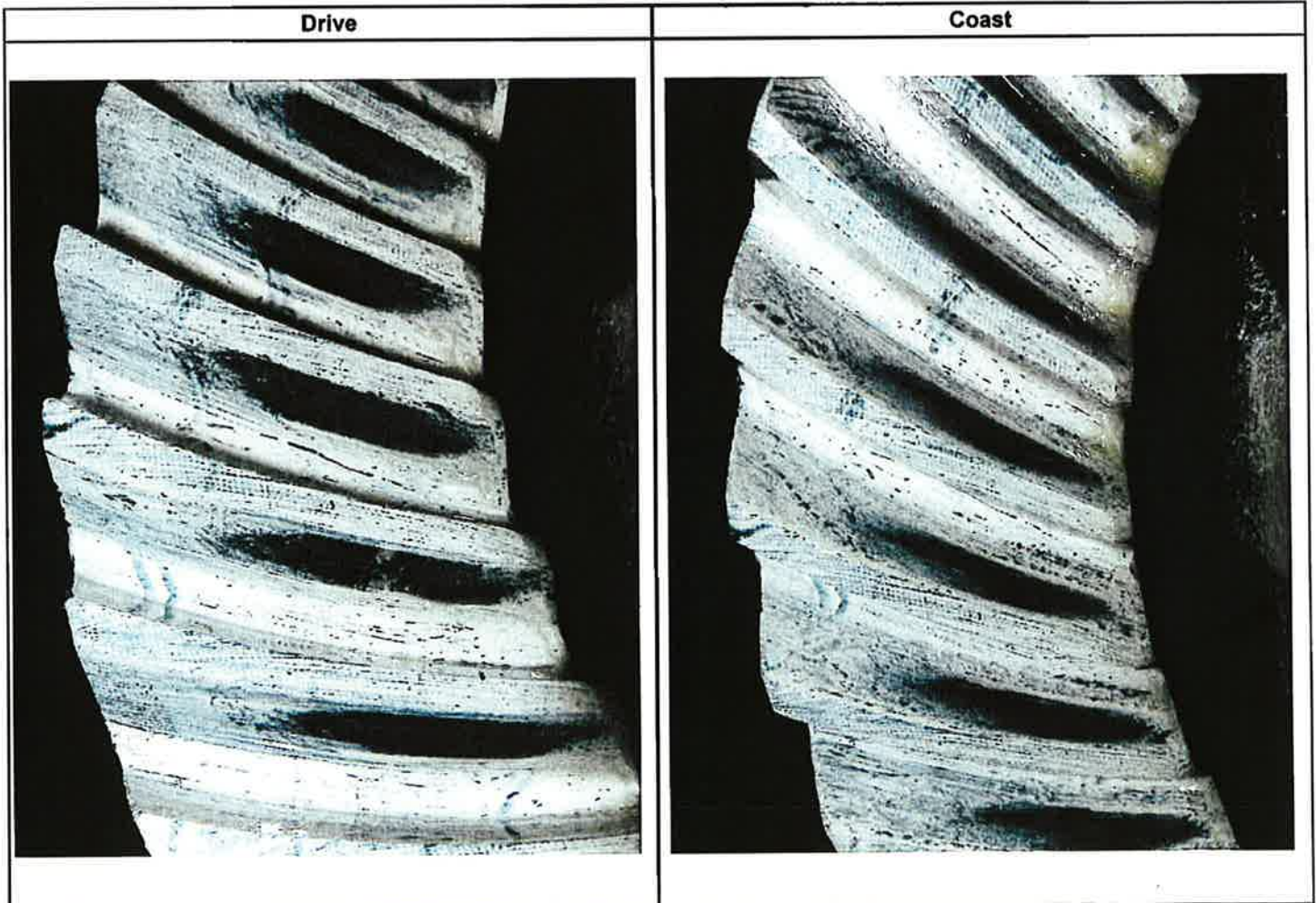
		Backlash	
		Initial	EOT
1	0.0050	.008	
2	0.0050	.010	
3	0.0060	.008	
4	0.0065	.010	
Avg.		0.0056	

TRN Number	TRN 0766
Hardware ID	1C
Ring Batch ID	P4L870A
Pinion Batch ID	V12500
Gear Test Type	Lubrited
Axle Ass'y Date	(N/A)
Axle ID Number	060AA1004
Axle Serial No.	ASTM-0002
Pattern Contact	L2 F0
Agree Y/N?	Yes
Operator	JPK
Prep Date	07/30/08

Tool ID #'s		
Initial	573-3C	563-114
EOT	573-3C	563-114
Mfg's Build Info		
Backlash	0.005	
R/T	22.0	

Axle Cleaned	
Oper.	JPK
Date	7.31.08

Comments **"Retrofit" Lubrited unapproved hardware for matrix testing**  
**Additional Mfg's Build Info: R/T CS L2F-1, BL .005**



D6121 L-37

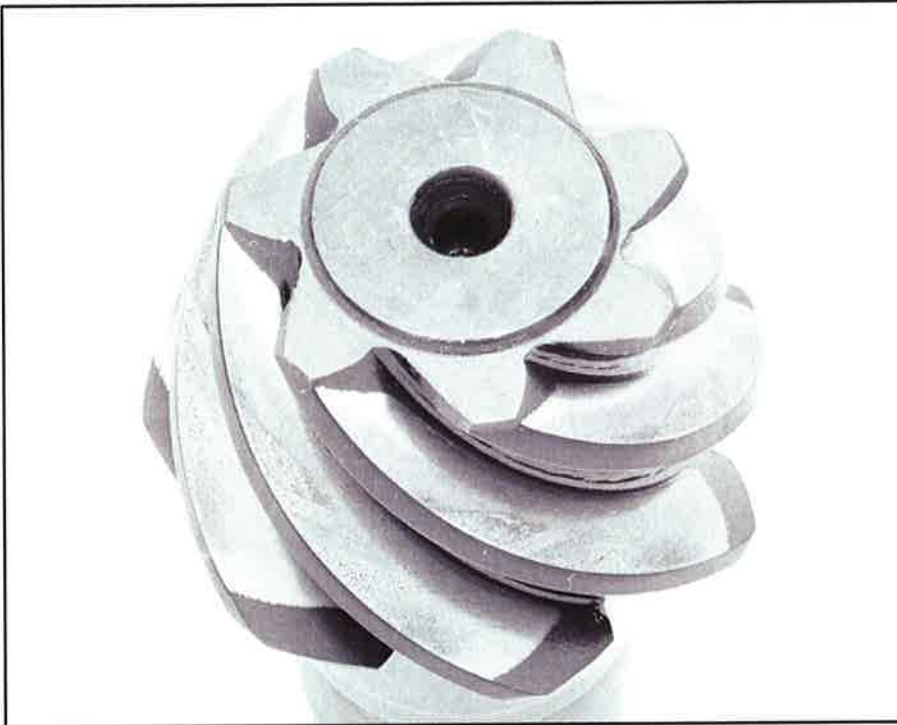
**High Torque Test - Lubrited**

**Lubrizol Mechanical Test**

Laboratory  
Oil Code  
TRN Number  
Test Number  
EOT Date

**LUBRIZOL**  
**063271**  
**TRNN0J76C**  
**191-2658**  
**20080801**

**Pinion**



**Ring**





Afton CMIR 58906 retrofit Lubrite





Afton CMIR 58906 retrofit Lubrite

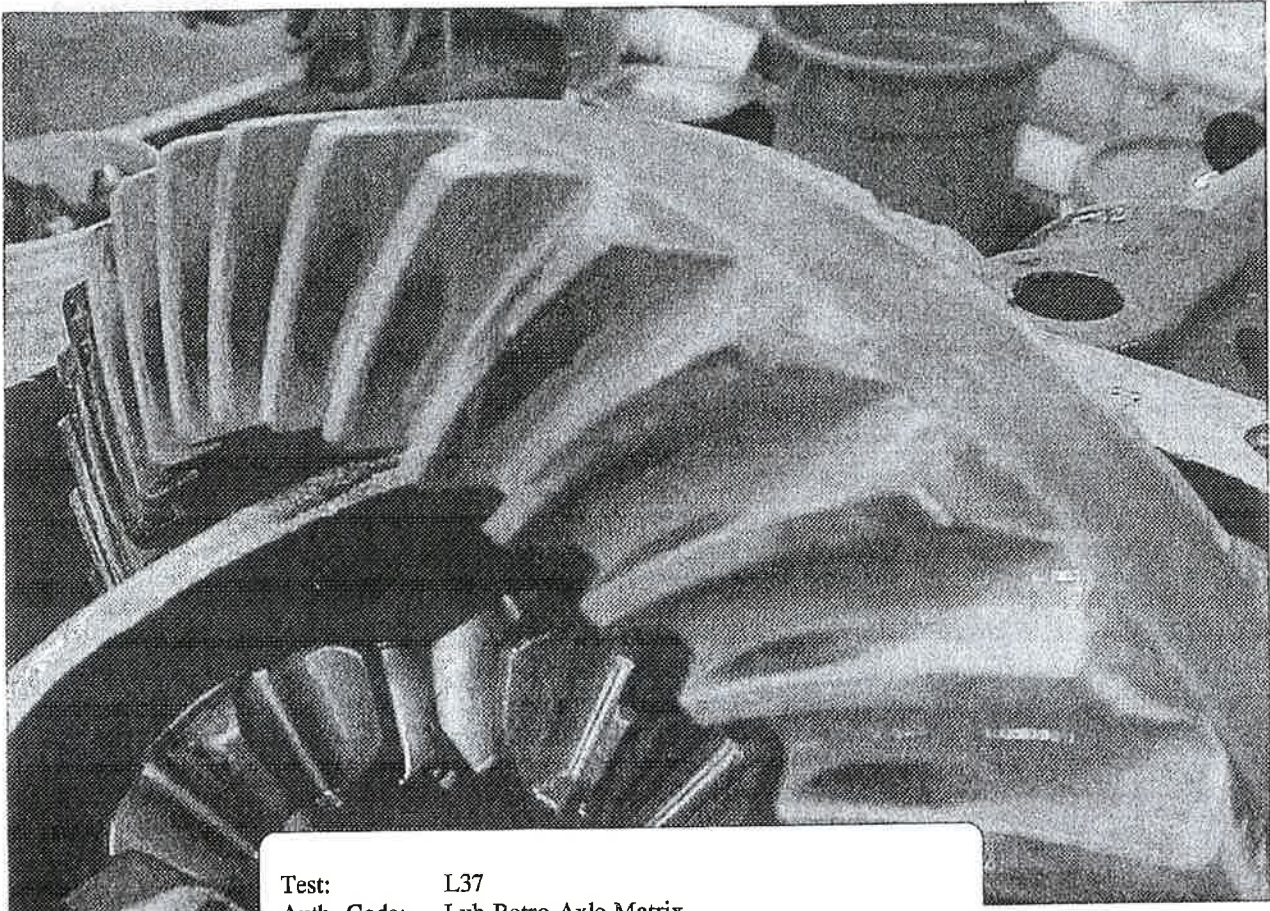




Afton CMIR 58906 retrofit Lubrite

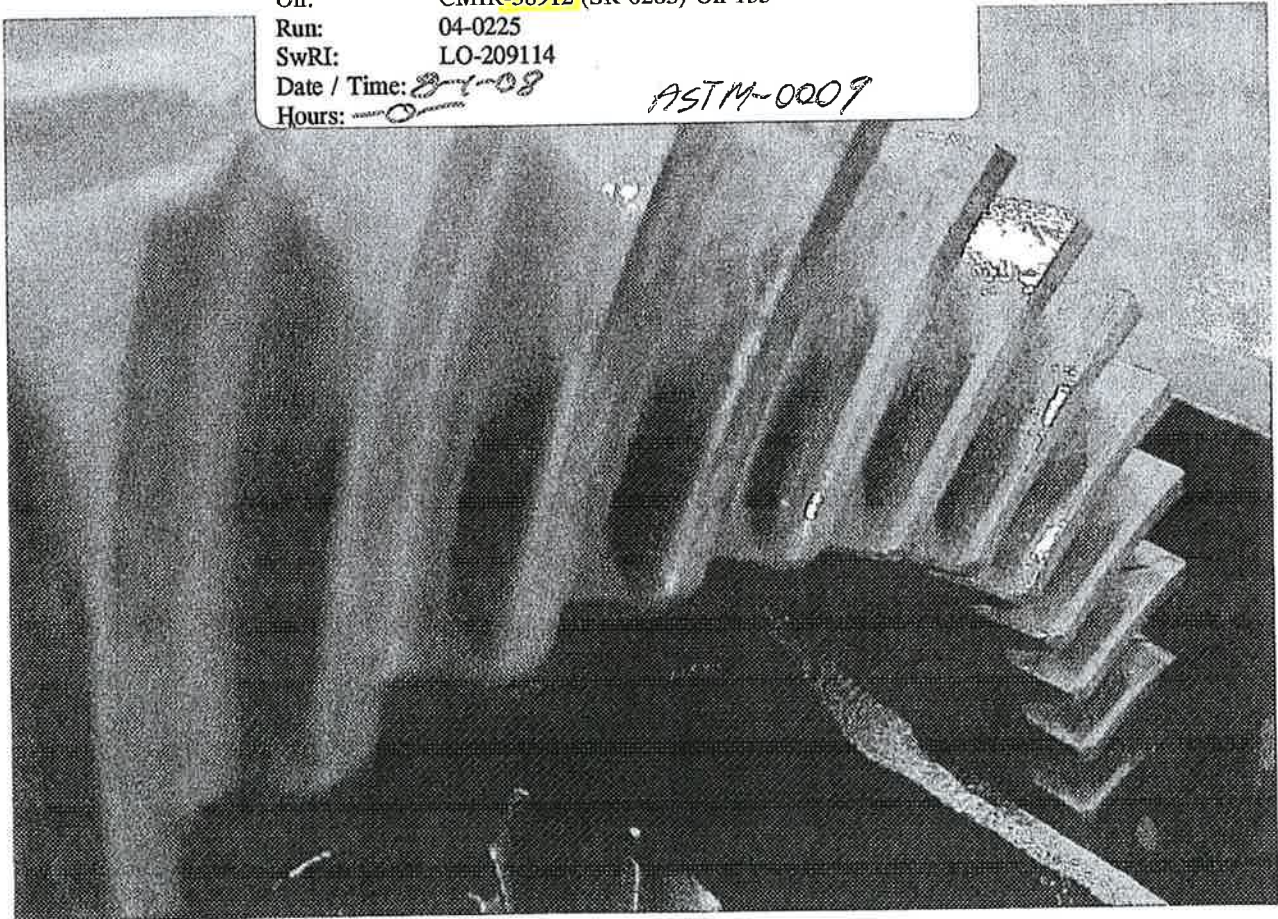






Test: L37  
Auth. Code: Lub.Retro.Axle Matrix  
Oil: CMIR-58912 (SR-0265) Oil 155  
Run: 04-0225  
SwRI: LO-209114  
Date / Time: 8-1-08  
Hours: 0

ASTM-0009





# D6121, L-37 Load Evaluation



Oil Code:	58912	Type:	LUBRITED
Test Stand No.:	04	EOT Date:	20080803
Stand Run	04-0225		

## Pinion





# D6121, L-37 Load Evaluation



Oil Code:	58912	Type:	LUBRITED
Test Stand No.:	04	EOT Date:	20080803
Stand Run	04-0225		

## Ring Gear





0

# Axle Unit Data Logsheet

Pre Test CMIR 063638 TMC127

Note: This logsheet can be used for the following Axle tests: L-37, L-20 and Gear Spalling.

		Break	Turn
Initial		40.0	40.0
E	Hot	40.0	37.5
	Cold	30	17.5
O	Without Axles	27.5	15.5
T	Pinion Only	15	10

		Backlash	
		Initial	EOT
1	0.0065	.0095	
2	0.0065	.010	
3	0.0060	.010	
4	0.0065	.010	
Avg.	0.0064		

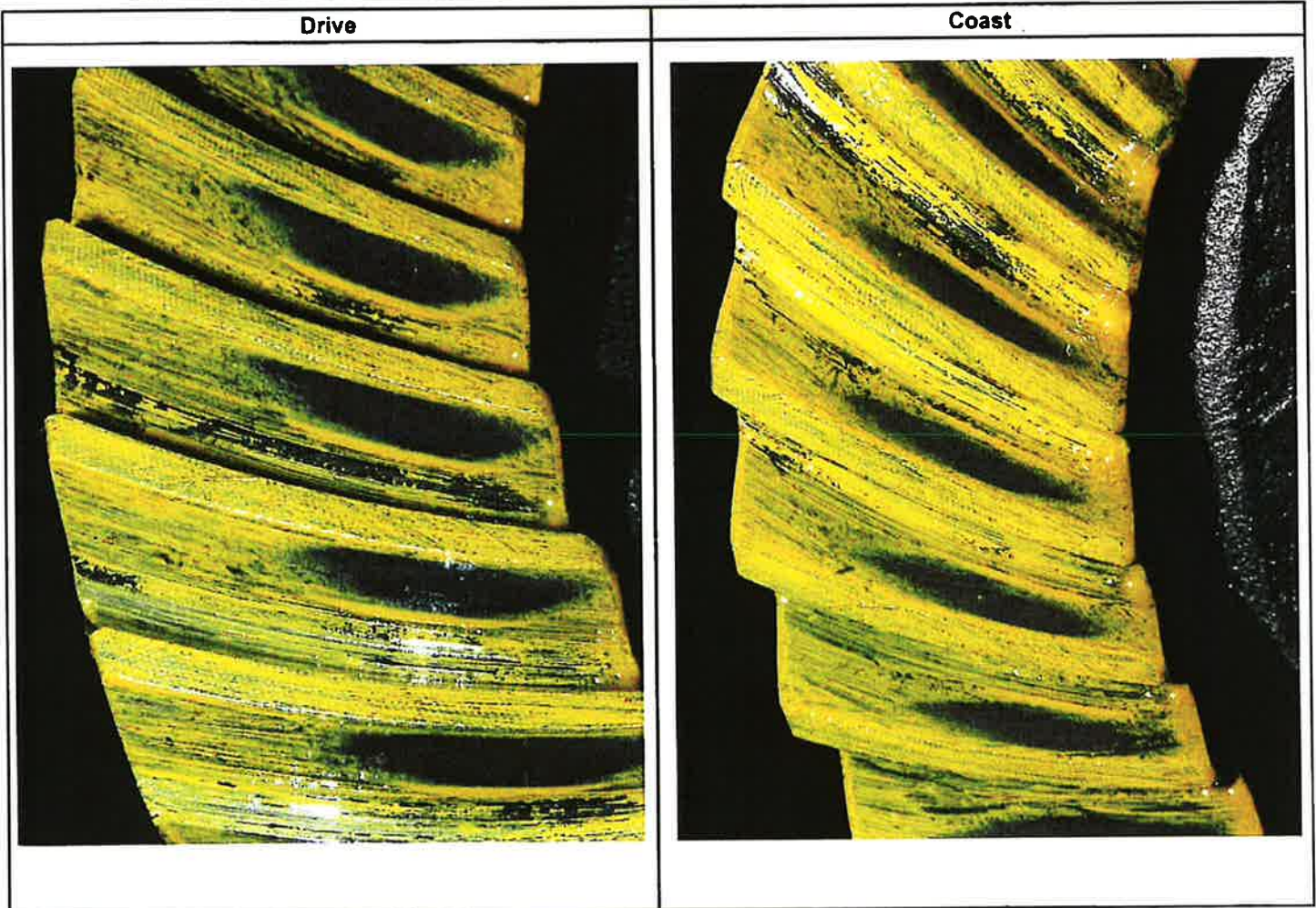
TRN Number	TKUZZPPZB
Hardware ID	5L
Ring Batch ID	P4L870A
Pinion Batch ID	V1L500
Gear Test Type	Lubrited
Axle Ass'y Date	(N/A)
Axle ID Number	060AA1004
Axle Serial No.	ASTM-0010
Pattern Contact	L2 F+1
Agree Y/N?	Yes
Operator	JPK
Prep Date	07/30/08

Tool ID #'s		
Initial	573-3C	563-114
EOT	573-3C	563-114
Mfg's Build Info		
Backlash	-0.055	.0055
R/T	31.2	8/2/08 JPK

Axle Cleaned	
Oper.	JPK
Date	8-1-08

Comments **"Retrofit" Lubrited unapproved hardware for matrix testing**

**Additional Mfg's Build Info: R/T CS L2F+1, BL .006**





D6121 L-37

**High Torque Test - Lubrited**

**Lubrizol Mechanical Test**

Laboratory  
Oil Code  
TRN Number  
Test Number  
EOT Date

**LUBRIZOL**  
**063638**  
**TRNZBPPZB**  
**191-2659**  
**20080802**

**Pinion**



**Ring**





Afton CMR 50681?? retrofit Lubrite ref. 3A944





ref. 3A944

59291 Ketrotit Lubrite

Afton CMIR





Affon CMIR 59291 Retrofit Lubrite ref. 3A944





Parc - Intertek retrofit Lubrite

L37-910  
ASTM-0012  
CMIR 49193  
Drive





*Parc - Intertek retrofit Lubrite*



L37-910

ASTM-0012

CMIR 49193

Coast

Parc - Intertek retrofit Lubrite  
CMIR 49193

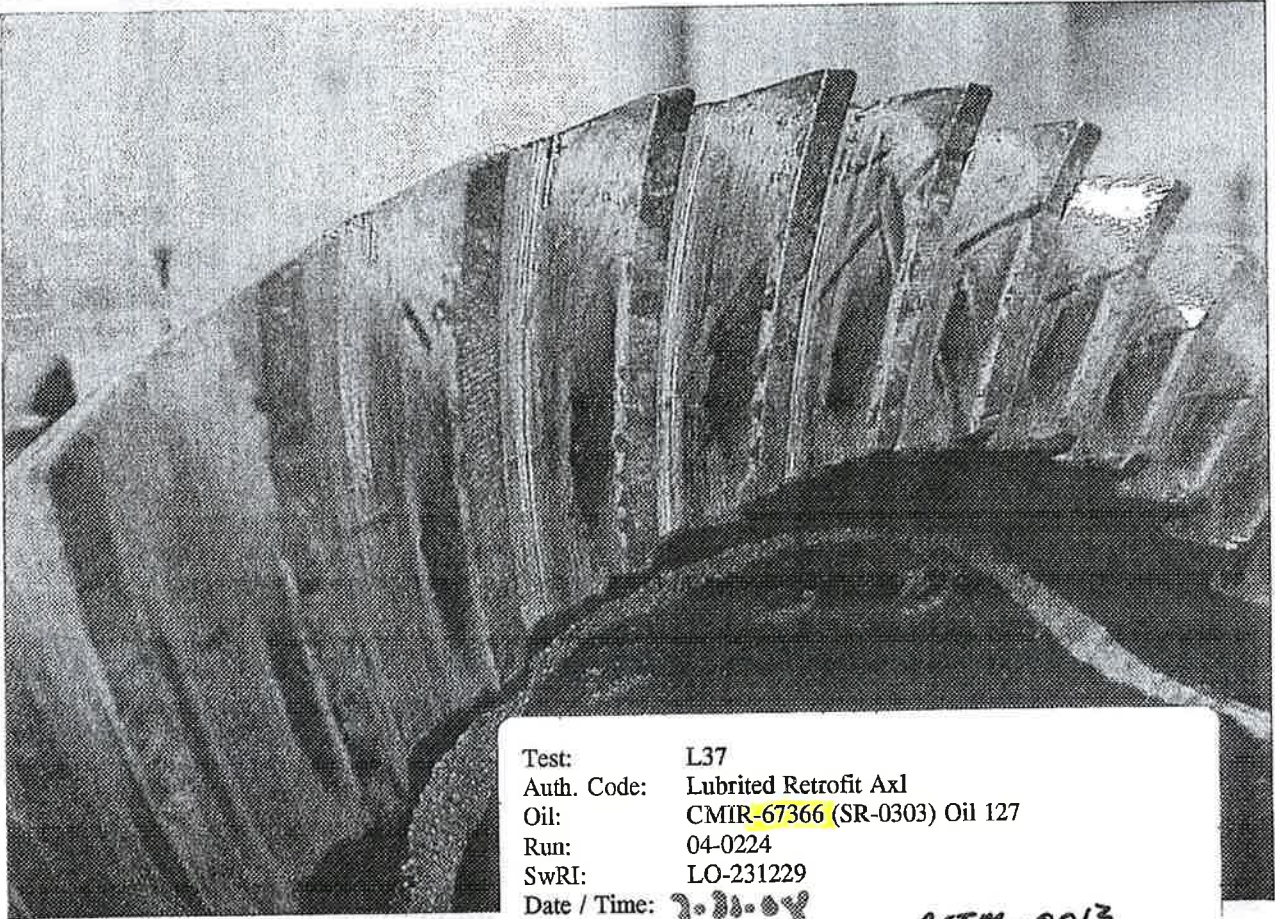




*Para - Intertek retrofit Lubrite*

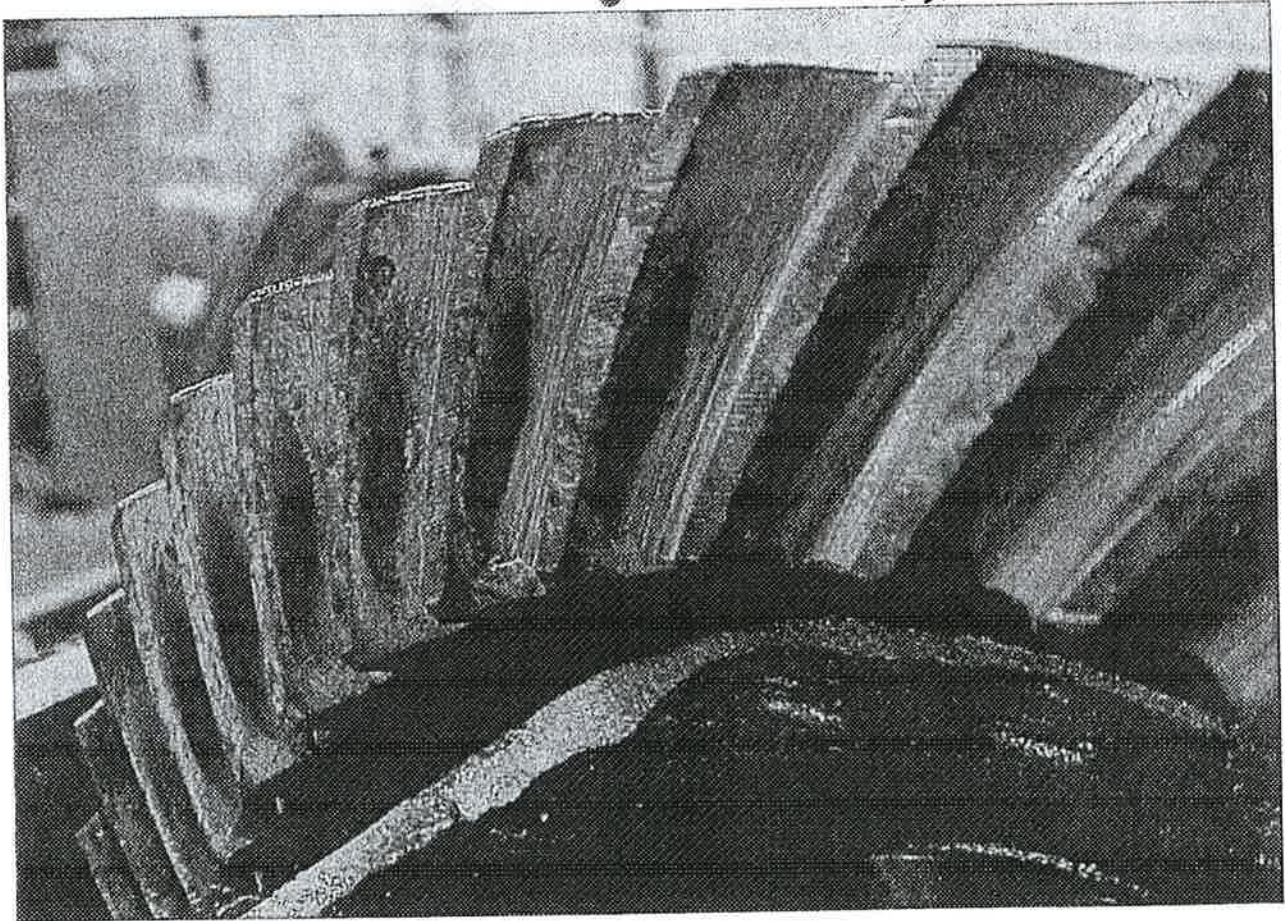
L37-910  
CMIR 49193  
TMC 127  
ASTM-0012  
P4L870A





Test: L37  
Auth. Code: Lubrited Retrofit Axl  
Oil: CMIR-67366 (SR-0303) Oil 127  
Run: 04-0224  
SwRI: LO-231229  
Date / Time: 7-31-04  
Hours: ①

*ASTM-0013.*





# D6121, L-37 Load Evaluation



Oil Code:	67366	Type:	LUBRITED
Test Stand No.:	04	EOT Date:	20080801
Stand Run	04-0224		

## Pinion





# D6121, L-37 Load Evaluation



Oil Code:	67366	Type:	LUBRITED
Test Stand No.:	04	EOT Date:	20080801
Stand Run	04-0224		

## Ring Gear





# Axle Unit Data Logsheet

Pre Test CMIR 067304 TMC152-1

✓ Note: This logsheet can be used for the following Axle tests: L-37, L-20 and Gear Spalling.

		Break	Turn
Initial		25.0	22.5
E	Hot	20.0	17.5
	Cold	20.0	13.6
O	Without Axles	20.0	15.0
T	Pinion Only	17.5	15.0

		Backlash	
		Initial	EOT
1	0.0030	.005	
2	0.0040	.0055	
3	0.0025	.0045	
4	0.0035	.005	
Avg.	0.0033		

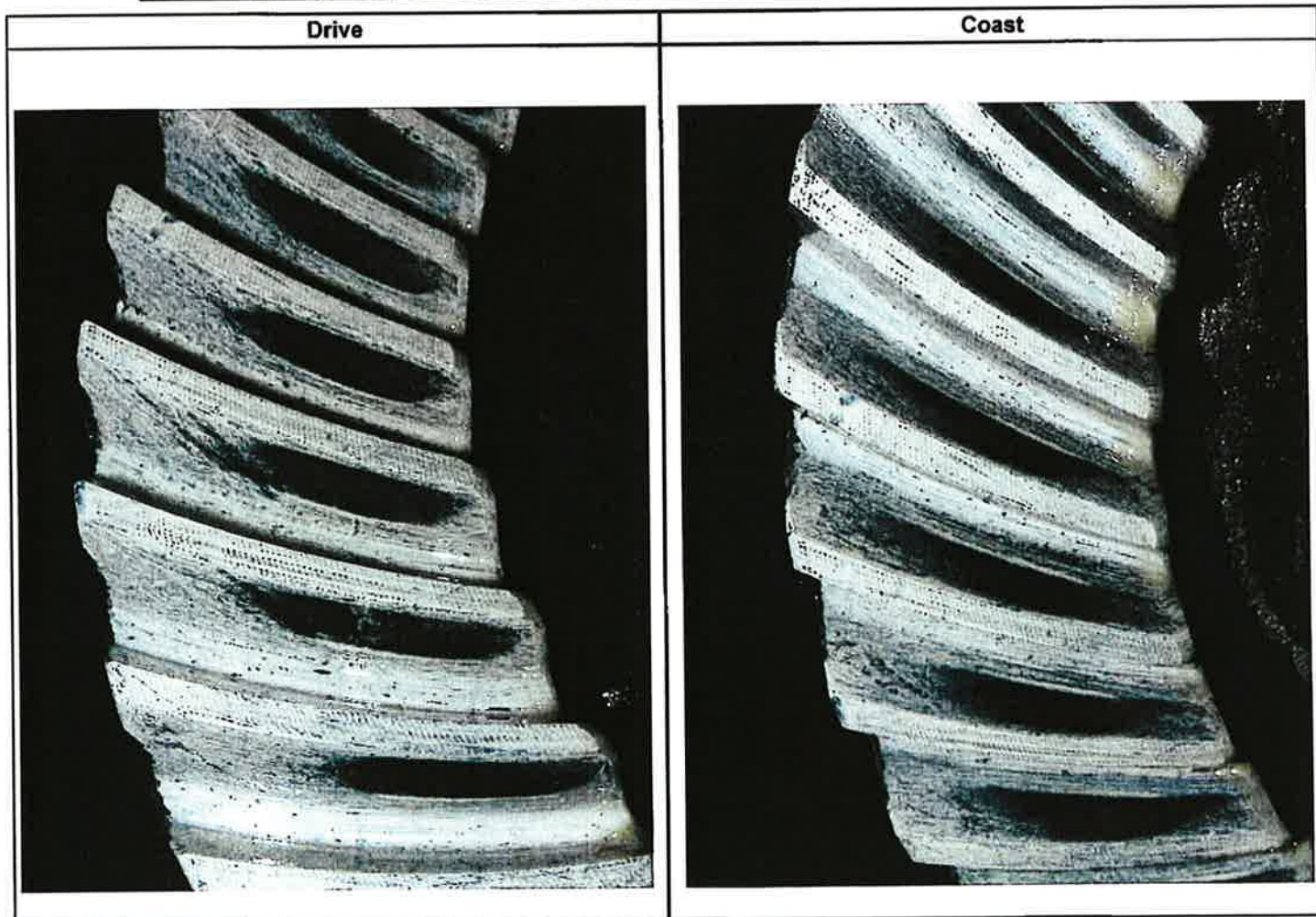
TRN Number	TRN70 Rx TC
Hardware ID	7V
Ring Batch ID	P4L870A
Pinion Batch ID	VIL500
Gear Test Type	Lubrited
Axle Ass'y Date	(N/A)
Axle ID Number	060AA1004
Axle Serial No.	ASTM-0006
Pattern Contact	L2 F0
Agree Y/N?	Yes
Operator	JPK
Prep Date	07/30/08

Tool ID #'s		
Initial	573-3C	563-114
EOT	573-3C	563-114
Mfg's Build Info		
Backlash	0.005	
R/T	20.0	

Axle Cleaned	
Oper.	JWHA / JAKC
Date	8.5.08

Comments **"Retrofit" Lubrited unapproved hardware for matrix testing**

**Additional Mfg's Build Info: R/T CS L2F-1, BL .006**





D6121 L-37

High Torque Test - Lubrited

Lubrizol Mechanical Test

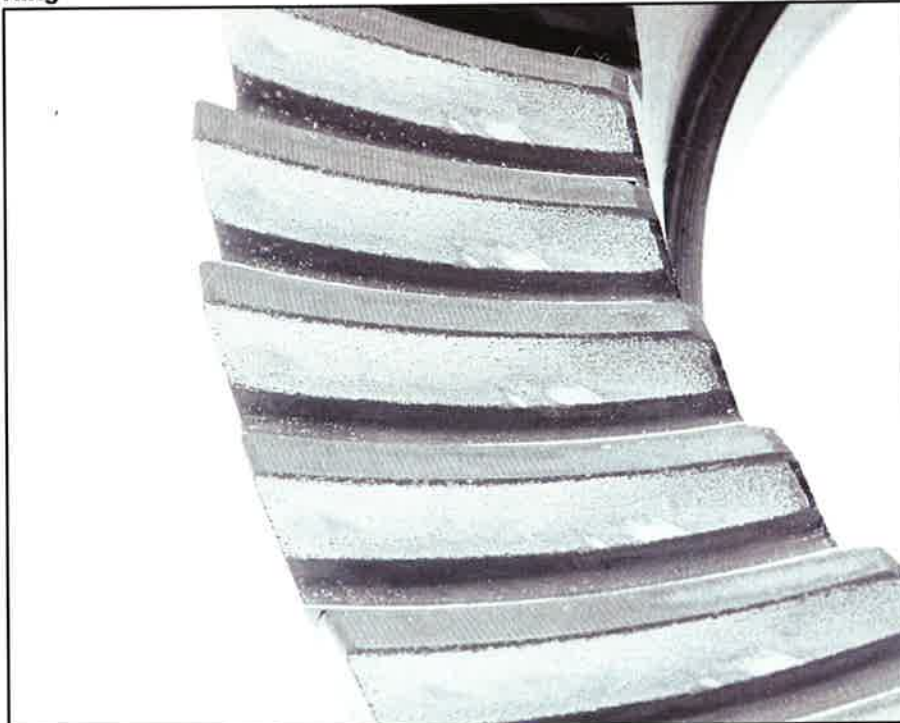
Laboratory  
Oil Code  
TRN Number  
Test Number  
EOT Date

**LUBRIZOL**  
**067304**  
**TRN70RXTC**  
**191-2662**  
**20080806**

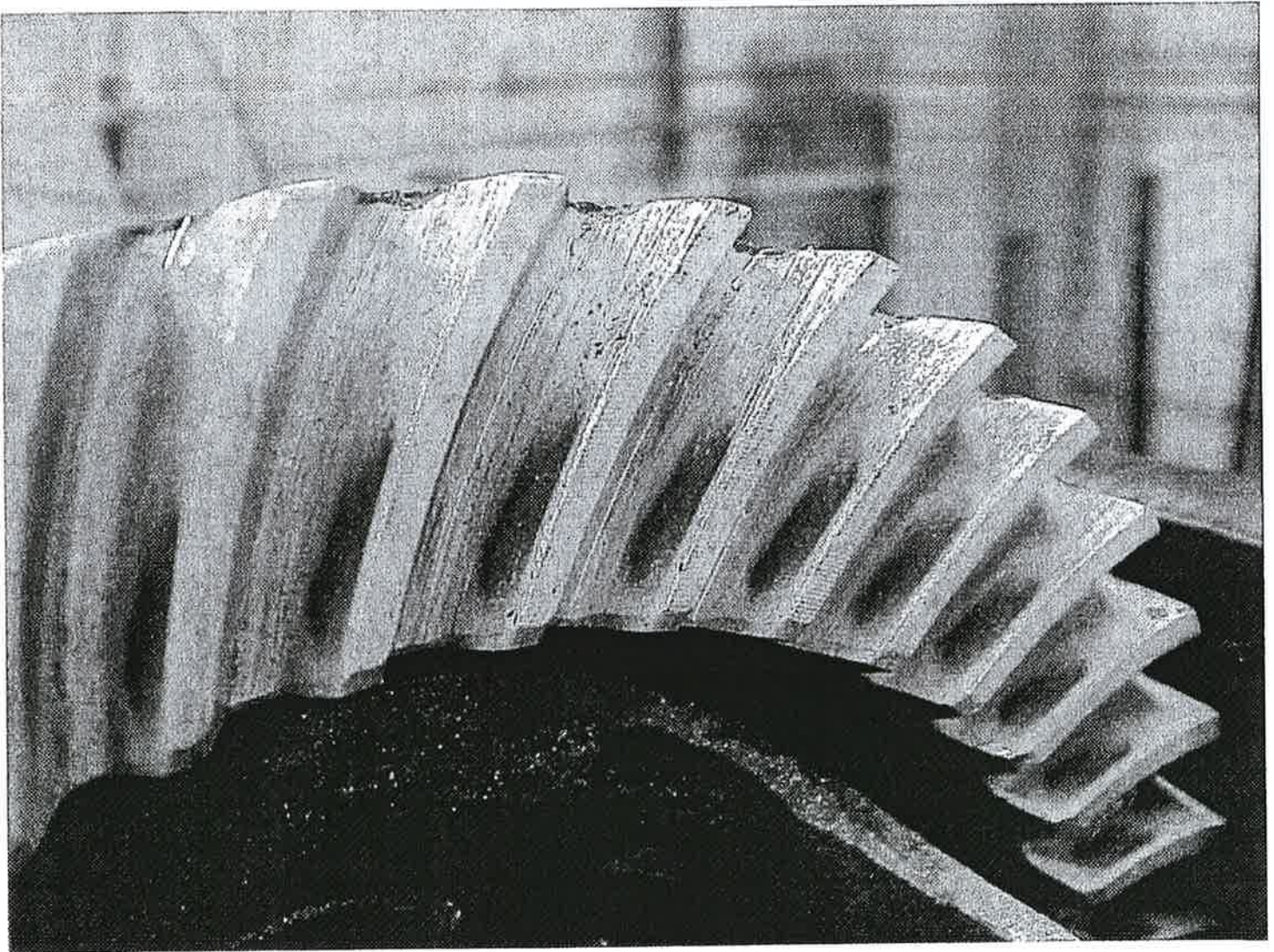
**Pinion**



**Ring**

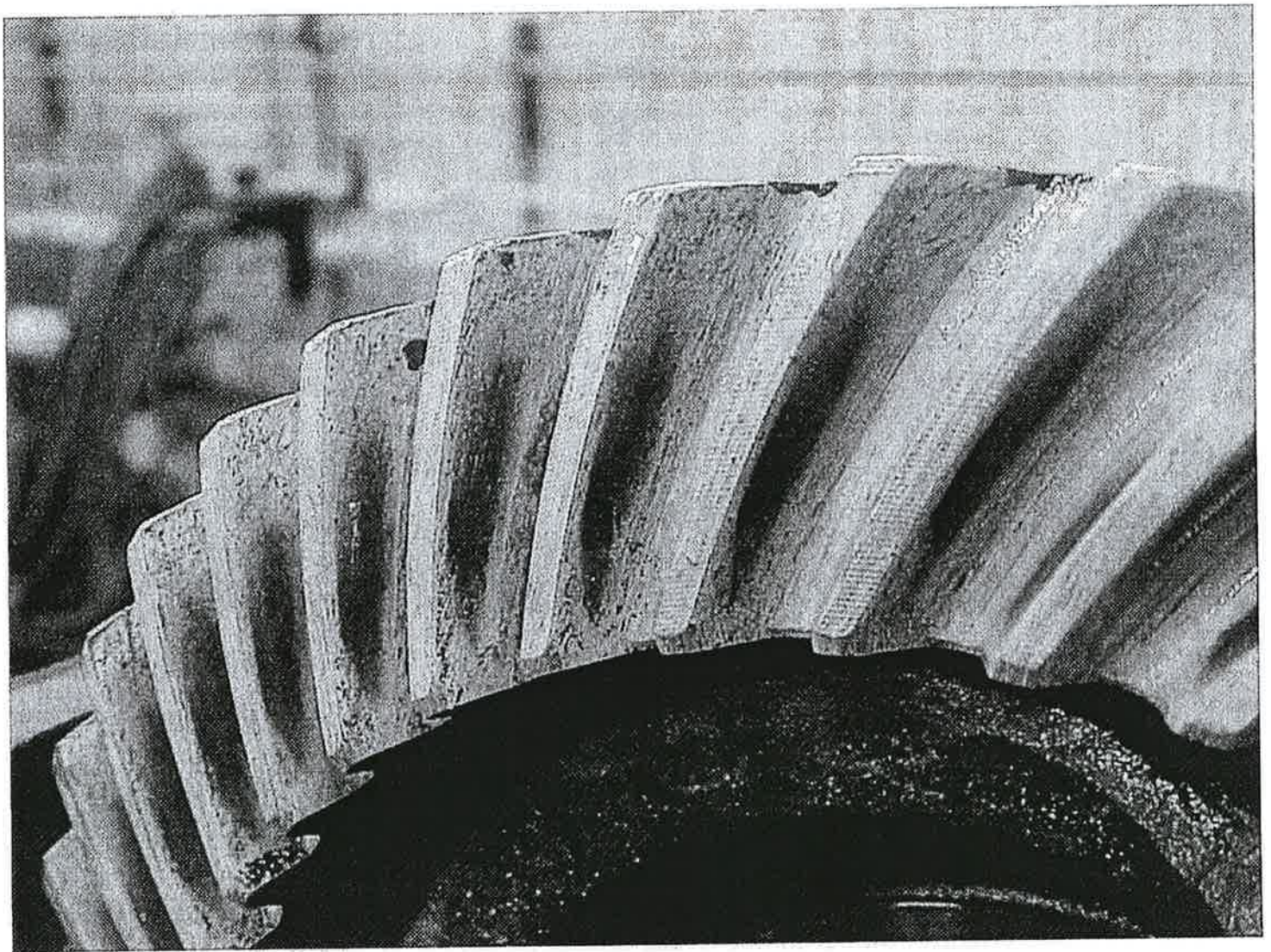






Test: L37  
Auth. Code: Lub. Retro. Axle Matr  
Oil: CMIR-67385 (SR-0322) Oil 153-1  
Run: 04-0227  
SwRI: LO-231248  
Date / Time: 8-4-08 / 11:55  
Hours: 0





Test: L37  
Auth. Code: Lub. Retro. Axle Matr  
Oil: CMIR-67385 (SR-0322) Oil 153-1  
Run: 04-0227  
SwRI: LO-231248  
Date / Time: 8-4-08 / 11:05  
Hours: 0



# D6121, L-37 Load Evaluation



Oil Code:	67385	Type:	LUBRITED
Test Stand No.:	04	EOT Date:	20080805
Stand Run	04-0227		

Ring Gear





# D6121, L-37 Load Evaluation



Oil Code:	67385	Type:	LUBRITED
Test Stand No.:	04	EOT Date:	20080805
Stand Run	04-0227		

Pinion





# Axle Unit Data Logsheet

Pre-Test TMC153-1 CMIR 067314

Note: This logsheet can be used for the following Axle tests: L-37, L-20 and Gear Spalling.

		Break	Turn
Initial		60.0	60.0
E	Hot	<del>20.0</del> 47.5	17.5 40 <sup>800</sup>
	Cold	35.0	27.5
O	Without Axles	32.5	25.0
T	Pinion Only	32.5	22.5

		Backlash	
		Initial	EOT
1	0.0075	0.10	
2	0.0070	0.13	
3	0.0070	0.11	
4	0.0070	0.12	
Avg.	0.0071		

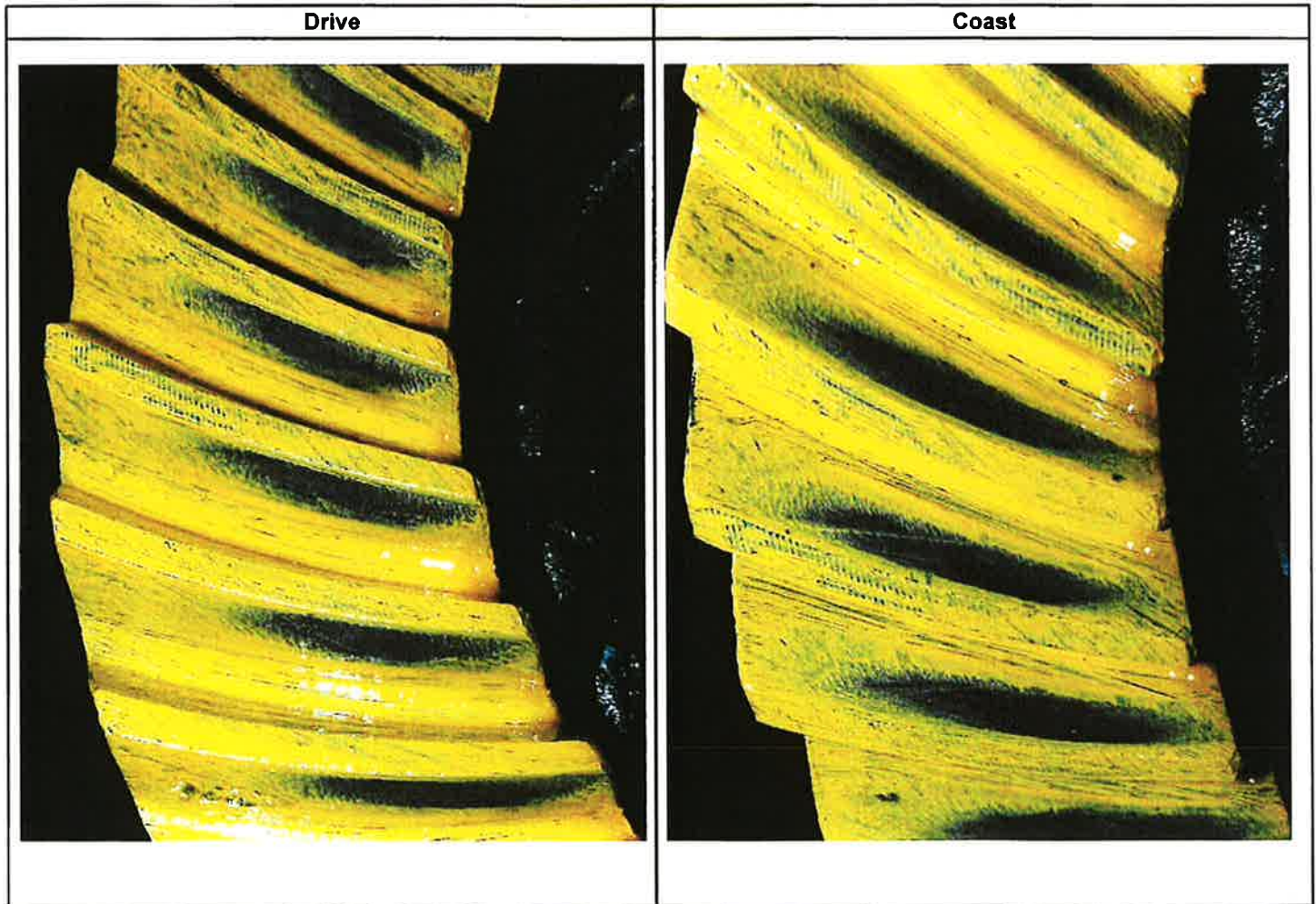
TRN Number	TRN35YP00
Hardware ID	0J
Ring Batch ID	P4L870A
Pinion Batch ID	V/L500
Gear Test Type	Lubrited
Axle Ass'y Date	(N/A)
Axle ID Number	060AA1004
Axle Serial No.	ASTM-0014
Pattern Contact	L2 F+1
Agree Y/N?	Yes
Operator	JPK
Prep Date	07/30/08

Tool ID #'s		
Initial	573-3C	563-114
EOT	573-3C	563-114
Mfg's Build Info		
Backlash	0.006	
R/T	43.36	

Axle Cleaned	
Oper.	JARC
Date	8-6-08

Comments **"Retrofit" Lubrited unapproved hardware for matrix testing**

**Additional Mfg's Build Info: R/T CS L2F+1, BL .006**





D6121 L-37

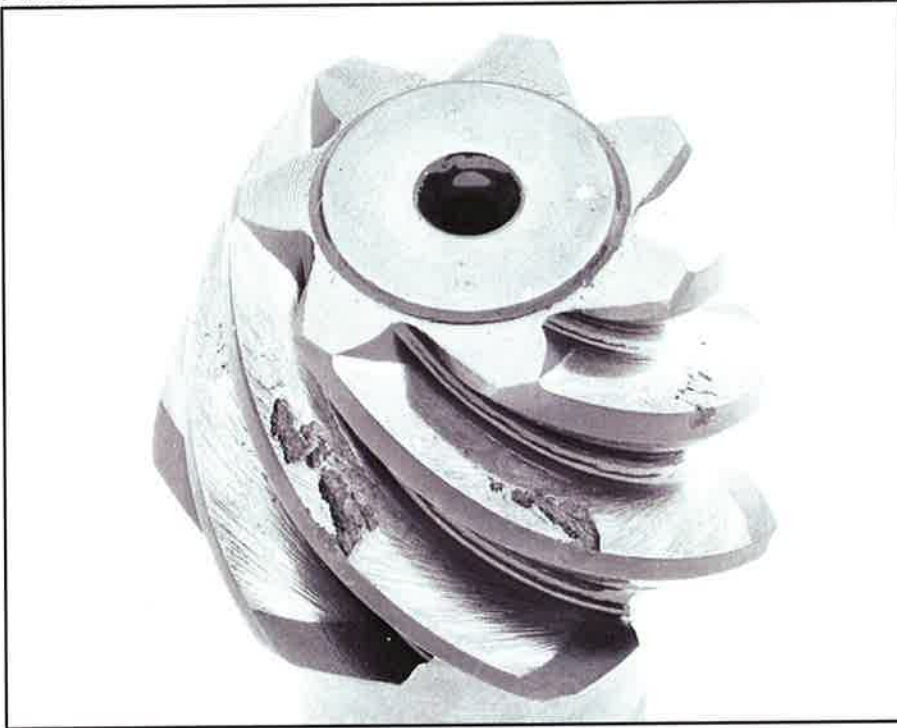
**High Torque Test - Lubrited**

**Lubrizol Mechanical Test**

Laboratory  
Oil Code  
TRN Number  
Test Number  
EOT Date

**LUBRIZOL**  
**067314**  
**TRN35YPQC**  
**191-2663**  
**20080807**

**Pinion**



**Ring**

