



# Test Monitoring Center

6555 Penn Avenue  
Pittsburgh, PA 15206-4489  
(412) 365-1000

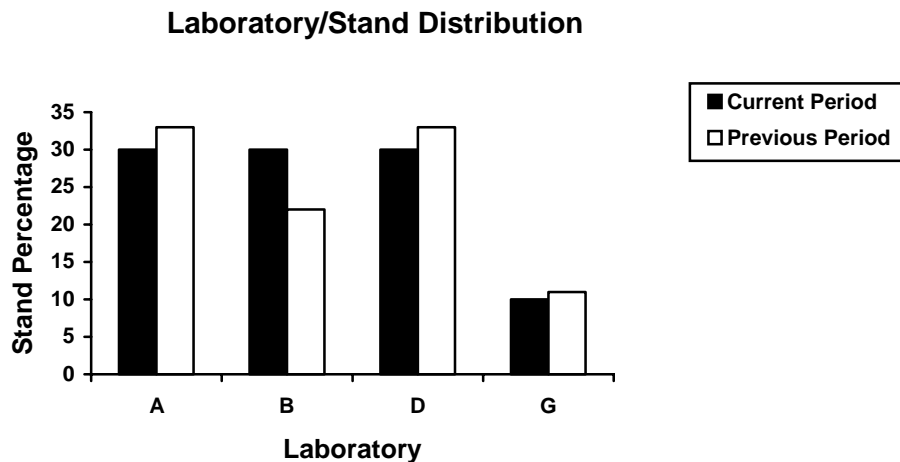
MEMORANDUM: 02-093  
DATE: October 17, 2002  
TO: Chris Schenkenberger, Chairman, L-60-1 Surveillance Panel  
FROM: Donald Lind  
SUBJECT: L-60-1 Reference Test Status from April 1, 2002 through September 30, 2002

The following is a summary of the L-60-1 reference oil tests that were reported to the Test Monitoring Center during the period April 1, 2002 through September 30, 2002.

## Lab/Stand Distribution

	Reporting Data	Calibrated as of 9/30/02
Number of Laboratories	4	3
Number of Stands	10	8

The following chart shows the laboratory/stand distribution:

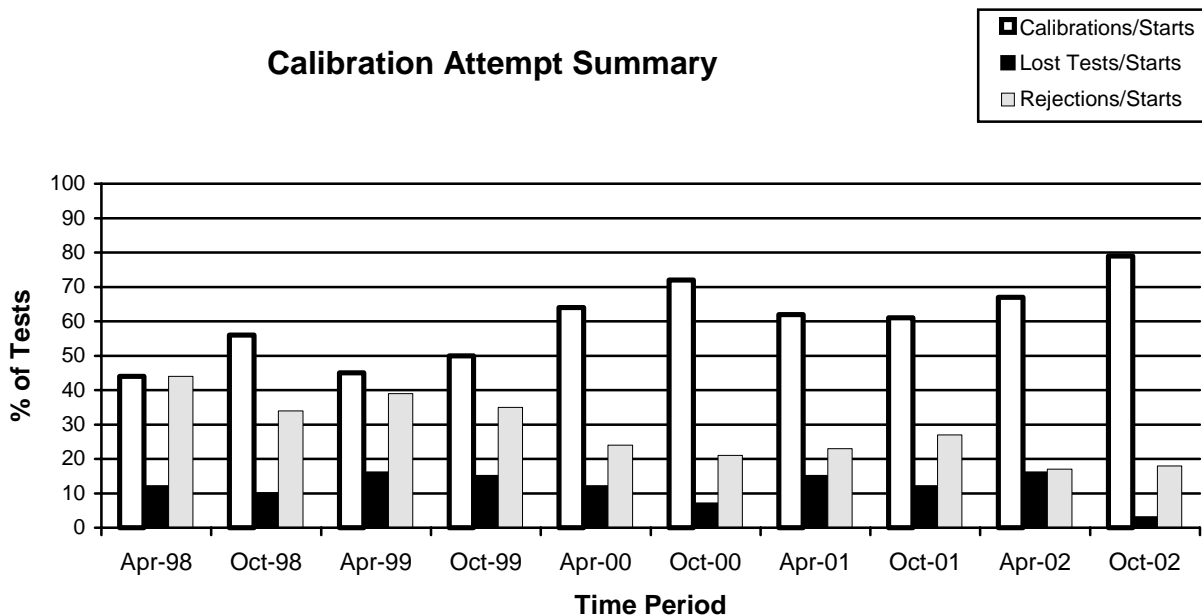


The following summarizes the status of the reference oil tests reported to the TMC:

	TMC Validity Codes	No. of Tests
Operationally and Statistically Acceptable	AC	22
Statistically Invalid Calibration Test	OC	5
Operationally Invalid, Laboratory Judgment	LC	1
Operationally Invalid, (Laboratory & TMC Judgment)	RC	0
Aborted	XC	0
<b>Total</b>		<b>28</b>

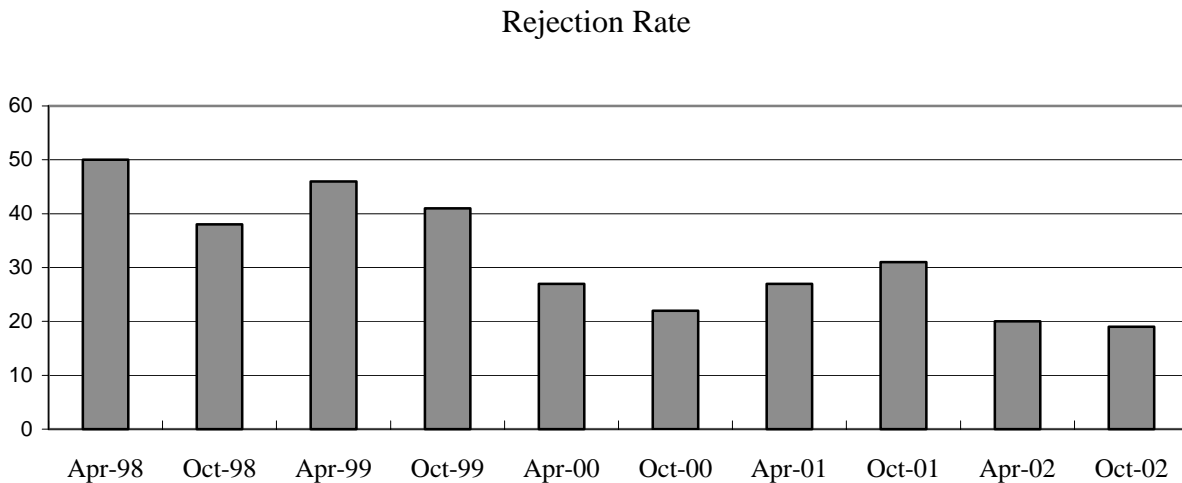
Additionally there were 8 tests conducted this report period. These tests were conducted to evaluate test gear preparation.

Calibrations per start, lost tests per start and rejection per start rates are summarized below:



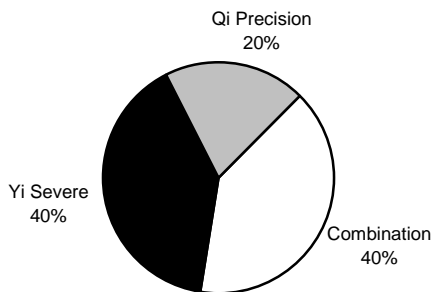
The calibration per start rate has increased when compared to the previous period. The lost test per start rate has decreased with respect to the previous period. The rejected test per start rate showed no change with respect to the previous period.

The operationally valid statistically rejected test rate, as shown below, indicates a slight decrease with respect to the previous period.

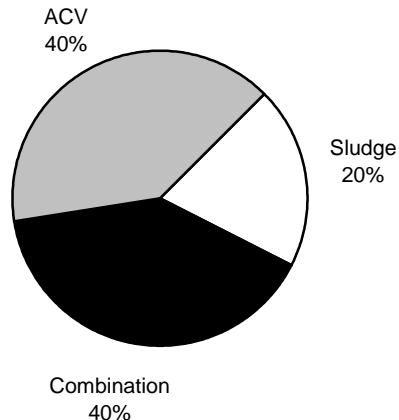


A detailed list of reasons tests failed the acceptance criteria is shown in Table 1. The following charts summarize these reasons with a breakdown by parameter of the failed tests:

**Distribution of LTMS Stand Alarms**



**Distribution of Stand Alarms by Parameter**



No LTMS deviations were written this period. There have been no LTMS deviations written in previous report periods.

There was one lost test from lab B reported this period. A detailed list of reasons for aborted and operationally invalid tests is shown in the table below:

Summary of Reasons for Aborted and Operationally Invalid Tests

Reasons	No. of Tests
Exceeded Oil Weight Loss Requirement	1

Severity and Precision

For this period, the mean delta/s was 0.397 severe (6.14 merits) for Viscosity Increase, 0.300 severe (0.73 merits) for Pentane Insolubles, 0.446 severe (0.794 merits) for Toluene Insolubles, -0.914 severe (-0.85 merits) for Average Carbon/Varnish and -0.328 severe (-0.03 merits) for Average Sludge. Below are tables illustrating laboratory severity and pooled s:

Laboratory Severity for This Report Period					
Lab	Viscosity	Pentane	Toluene	Carbon Varnish	Sludge
A	-0.06	0.10	0.40	-0.36	-0.31
B	0.55	0.33	0.73	-1.21	-0.74
D	0.47	0.72	0.19	-0.70	0.08
G	0.28	-0.87	-0.39	-1.12	0.89

Pooled Standard Deviation Table			
Parameter	Report Period Pooled s (All Oils)	Historical Pooled s (All Oils)	Pooled s Values Used for Severity Adjustment Calculations
Viscosity	0.06	0.15	0.15
Pentane	0.20	0.37	0.73
Toluene	0.36	0.49	0.75
Carbon Varnish	0.30	0.42	0.45
Sludge	0.18	0.22	0.16

### Industry Control Charts

Figures 1 through 5 show the industry control charts through September 30, 2002. The industry alarms triggered this report period are detailed below.

#### Pentane Insolubles

There were no industry EWMA severity or precision alarms this report period.

#### Toluene Insolubles

There were no industry EWMA severity or precision alarms this report period.

#### Viscosity Increase

There were no industry EWMA severity or precision alarms this report period.

#### Sludge

There were no industry EWMA severity or precision alarms this report period.

#### Carbon Varnish

There were numerous industry EWMA severity alarms this report period. The alarms could not be attributed to any one lab, stand, reference oil, or gear batch.

### TMC Lab Visits

There were no lab visits this report period.

### Information Letters

There were two information letters issued this report period. Information Letter 02-01, Sequence Number 20 was issued on June 25, 2002, Information Letter 02-02, Sequence Number 21 was issued on August 23, 2002. Items changed with these information letters are documented in the L-60-1 timeline (Table 2).

Reference Oil Status

The following is a listing of oils used for calibration testing along with the expected number of tests remaining at the Test Monitoring Center and at the testing laboratories. L-60-1 reference oils are shipped in quantities of 1/2 pint per test.

Oil	Number of Tests Remaining				
	Lab A	Lab B	Lab D	Lab G	TMC
133	6	5	4	0	1680
148	0	0	0	2	0
148-1	1	3	3	2	784
151-2	5	3	4	3	*
151-3	4	4	6	2	**

\* 20 Gallons (Multiple test area usage)

\*\* 399 Gallons (Multiple test area usage)

## Attachments

c: L-60/L-60-1 Surveillance Panel

<ftp://ftp.astmtmc.cmu.edu/docs/gear/l601/semiannualreports/l601-10-2002.pdf>

distribution: email

## **Listing of Tables and Figures Included as Part of This Report to the L-60-1 Surveillance Panel**

Table 1 Summarizes the Reasons for Failed Tests.

Table 2 is the L-60-1 Industry Timeline.

Figure 1 is the Industry Control Chart for L-60-1 Pentane Insolubles.

Figure 2 is the Industry Control Chart for L-60-1 Average Sludge.

Figure 3 is the Industry Control Chart for L-60-1 Toluene.

Figure 4 is the Industry Control Chart for L-60-1 Carbon/Varnish.

Figure 5 is the Industry Control Chart for L-60-1 Viscosity Increase.

Table 1  
Summary of Reasons for Rejected Tests

Reasons	No. of Tests
Severe Average Carbon Varnish	2
Stand EWMA Precision Alarm Average Sludge	1
Stand EWMA Precision Alarm Average Sludge, Severe Carbon Varnish, and Severe Average Sludge	1
Stand EWMA Precision Alarm Pentane Insolubles & Severe Carbon Varnish	1



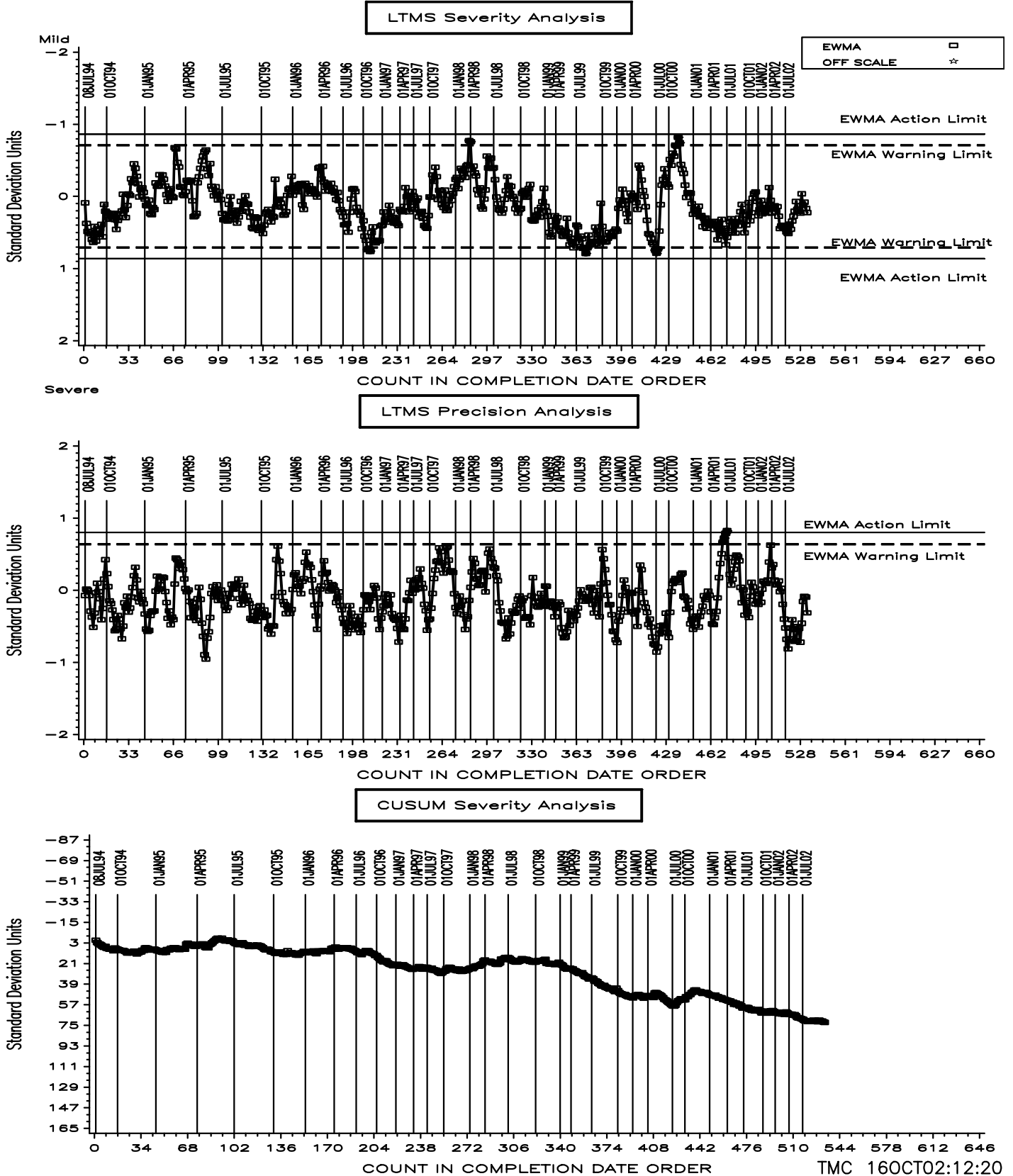
Table 2

## L-60-1 Timeline

Effective Date	Topic	IL#
19950901	Test Stand Motor Speed Change	95-1
19950901	Alternator Part Number Change	95-1
19950901	Air Box Heater Part Number Correction	95-1
19951115	Transforms./Correction Factors	95-1
19951103	Report Forms and Dictionary Version 19950912	95-1
19951026	Alternator Load Circuit Schematic Addition	95-2
19960122	Severity Adjustment Calculation Method	96-1
19960430	TMC One Page Addition	96-2
19960430	TMC New Address	96-2
19960531	Perfect Seal Gasket Maker Use	96-3
19960531	Gear Case Drawing (Lip Seal Use)	96-3
19960531	Report Forms and Dictionary Version 19960408	96-3
19970530	Added Percent Out Validity Criteria, Report Forms and Data Dictionary Changes (Version 19970411), Reporting of "Zero Value" Date	97-1
19970605	Revision of Primary Air Flow Spec, Removal of Air Pressure Specification	97-2
19970829	Added Average Air Box Temperature to Report Forms and Data Dictionary (Version 19970611)	97-2
19971107	Revised Precision and Bias Statement, Report Forms and Data Dictionary (Version 19970902)	97-3
19980612	Air Flow Calibration Requirement	98-1
19980623	Cleaning Agent Revision (Toluene)	98-2
19981123	Air Flow Calibration Requirement	98-3
19990100	Gear Problem (Manufacturer changed steel to lead-free metallurgy)	
19990101	Addition of CRC Gear Rating Workshop Training Requirement	98-3
19990215	Revised Gear Case Disassembly Procedure	99-1
19990301	Air Supply Line Note Addition	99-2
19990301	Data Logging Requirement	99-2
19990301	Strip Chart Requirement	99-2
19990301	Repeatability Term Change	99-2
19990609	Definition of Acceptable gears for testing due to severe ACV severity	99-3
19991016	Test Method for Pentane and Toluene Insolubles	99-4
20000427	Testing With Used Gears Discontinued	00-1
20000427	New Gear Batch 7-99 Introduced	
20020501	CRC Rating Manual 20	02-1
20020501	Report Forms and Data Dictionary	02-1
20020710	Test Gear Preparation	02-2
20020710	Shaft Oil Lip Seal	02-2
20020710	Speedi-Sleeve	02-2
20020710	Joint Radial Seal (V Ring)	02-2
20020710	End of Test Oil Drain	02-2
20020710	Instrument Calibration Frequency	02-2

# L601 INDUSTRY OPERATIONALLY VALID DATA

## REFERENCE FINAL PENTANE (% Weight)



# L601 INDUSTRY OPERATIONALLY VALID DATA

## REFERENCE FINAL SLUDGE (MERITS)

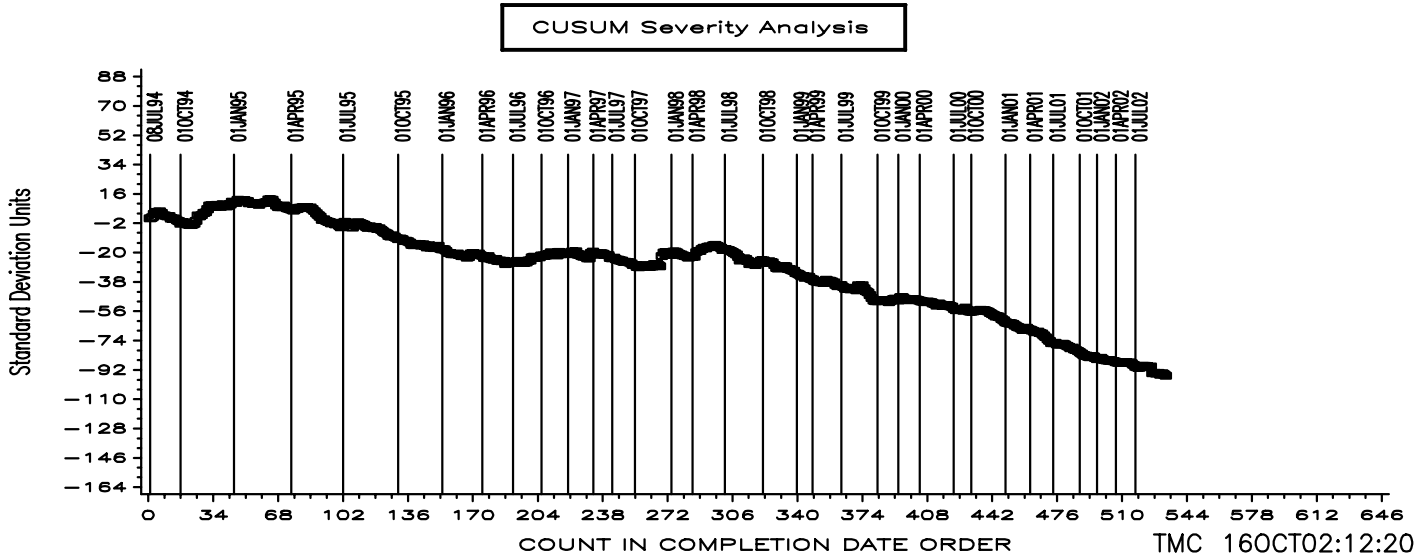
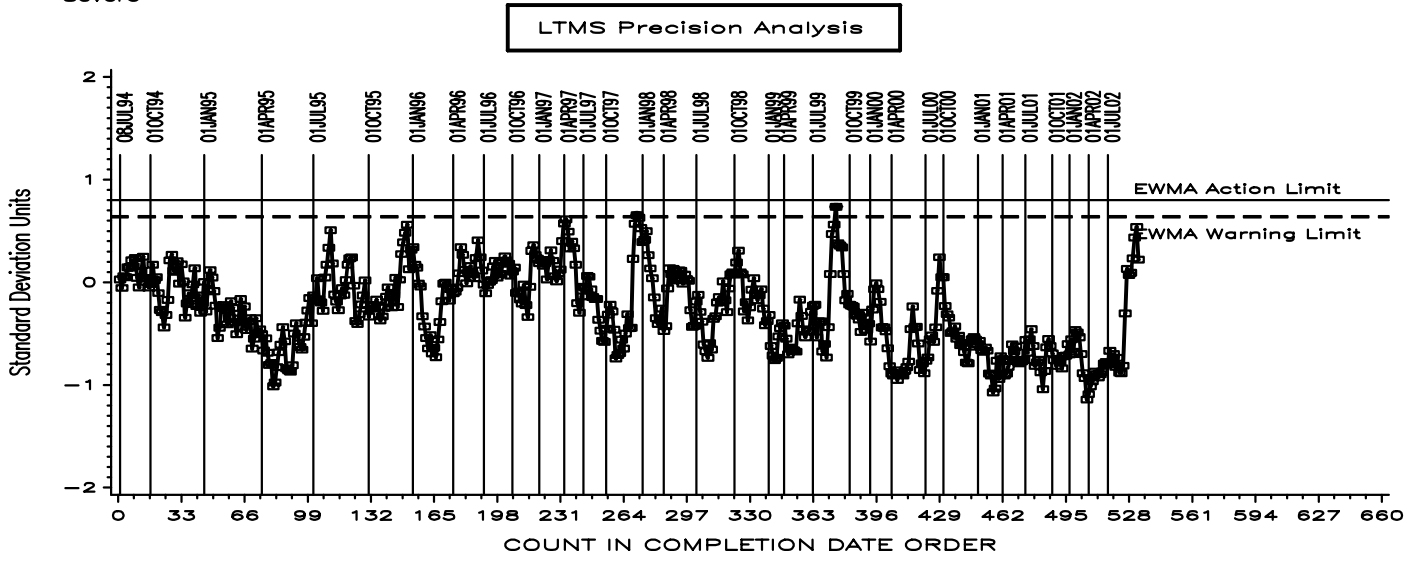
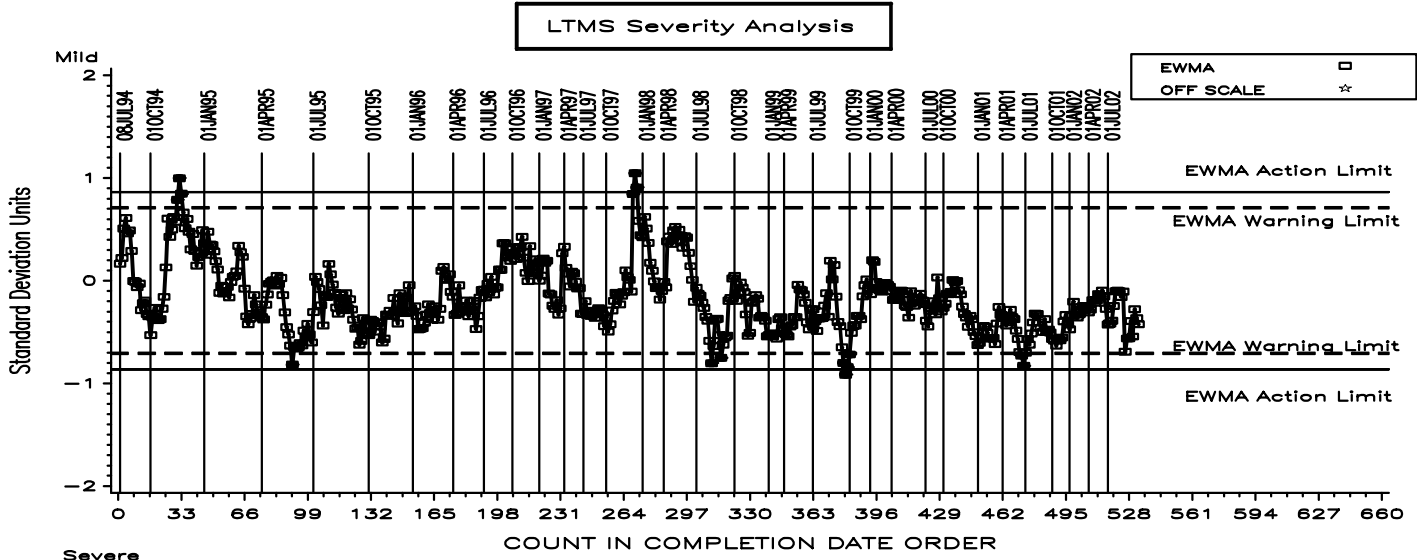


Figure 3

# L601 INDUSTRY OPERATIONALLY VALID DATA

## REFERENCE FINAL TOLUENE (% WEIGHT)

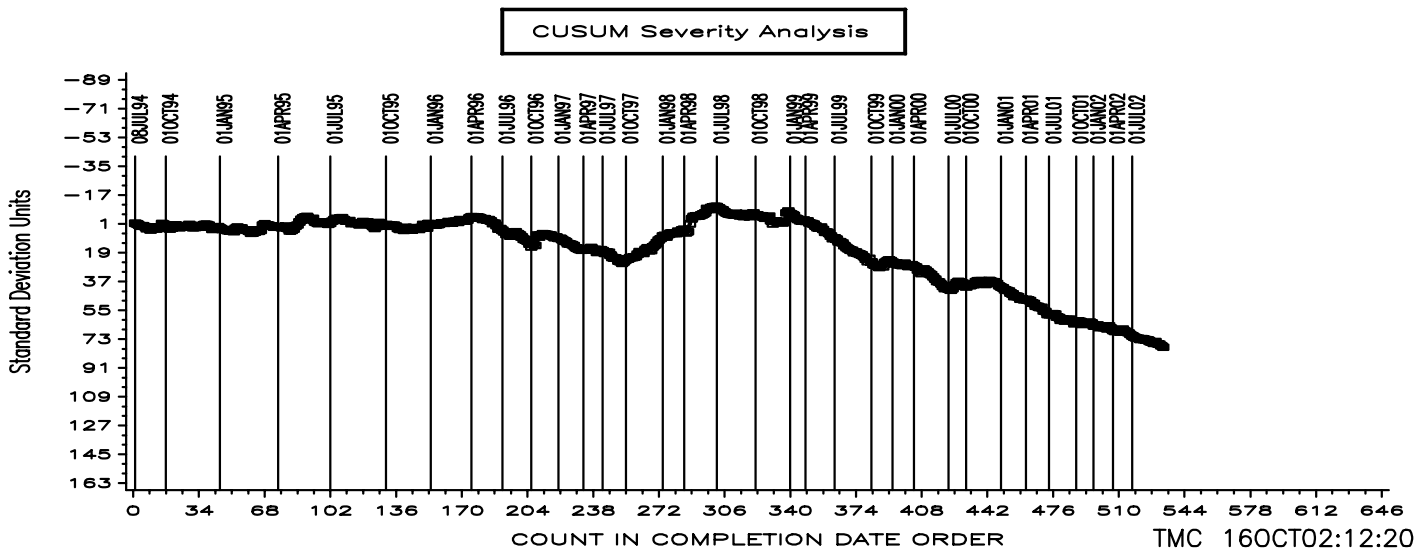
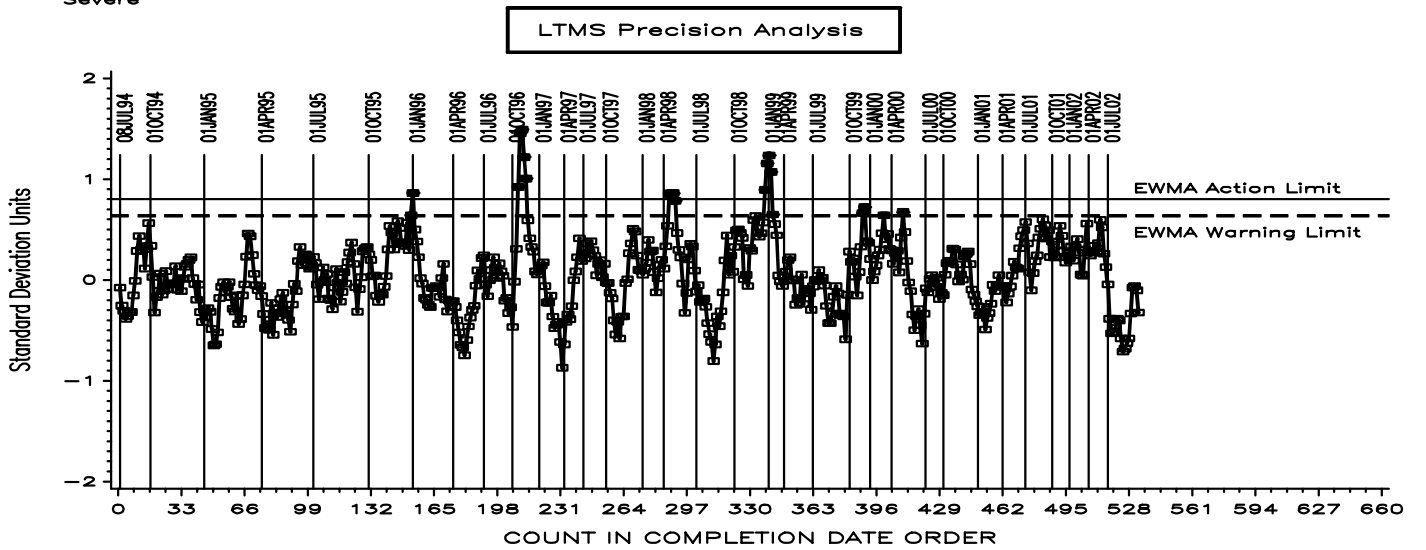
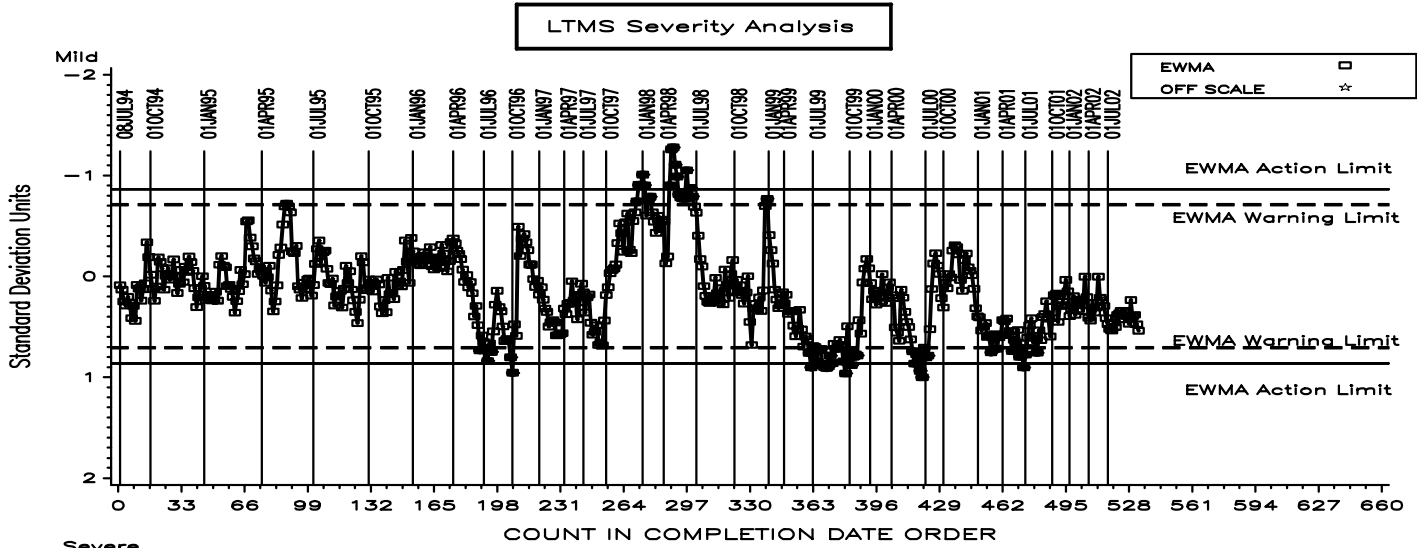
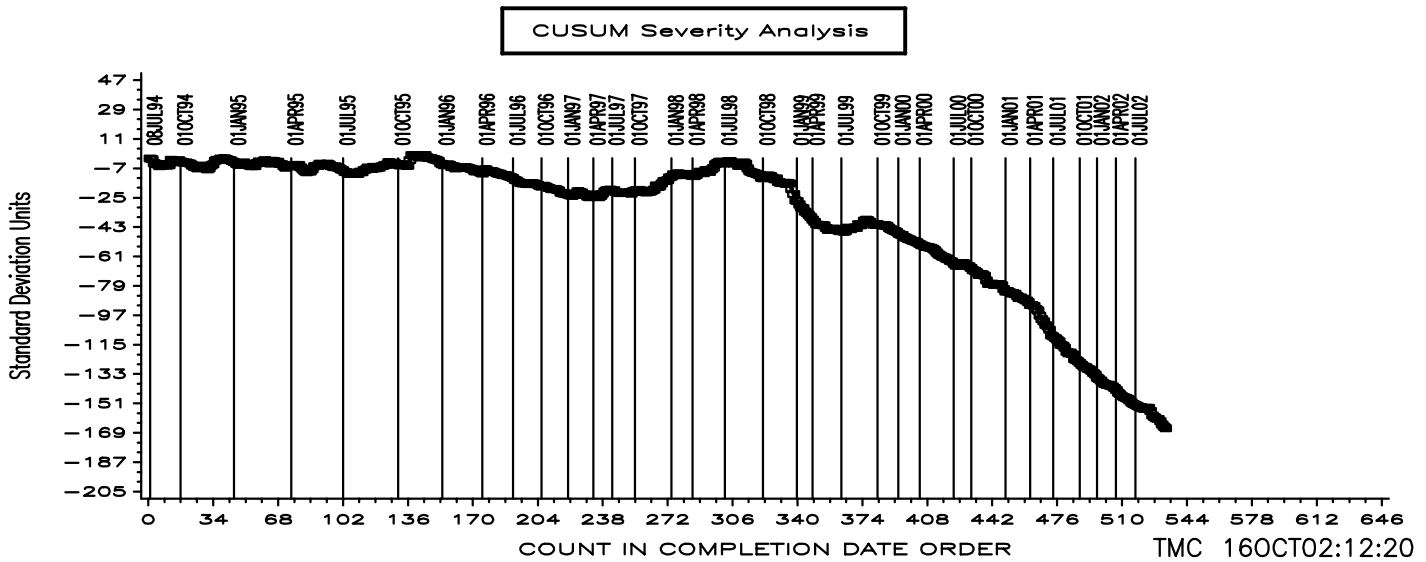
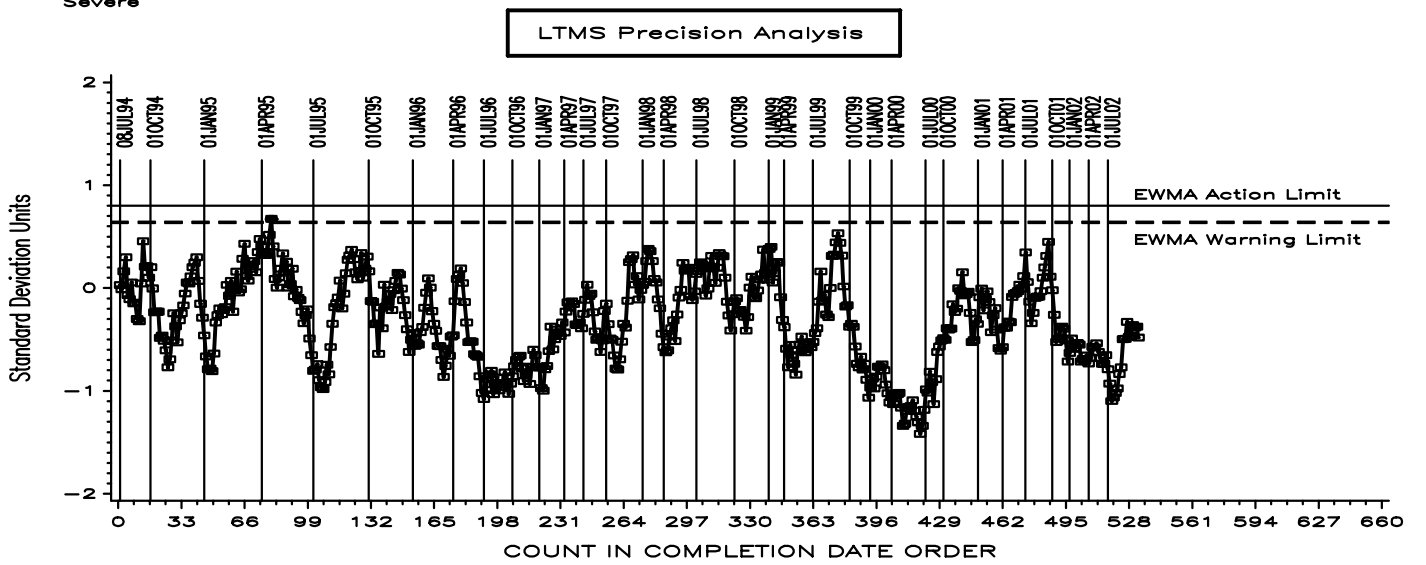
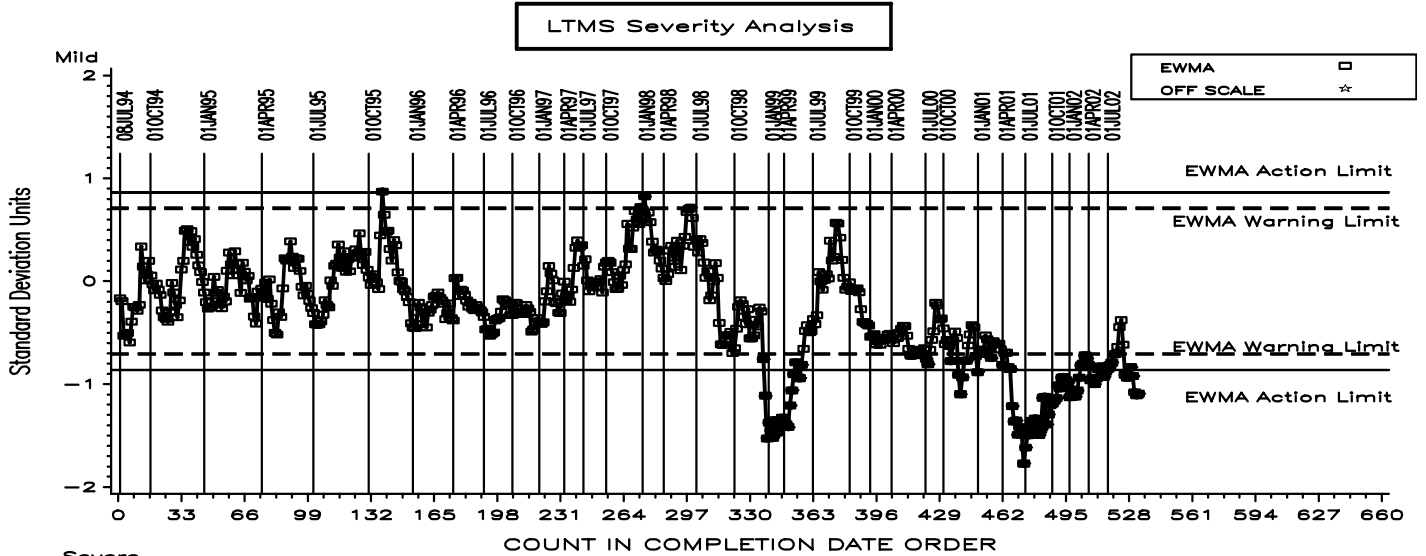


Figure 4

# L601 INDUSTRY OPERATIONALLY VALID DATA

## REFERENCE FINAL CARBON VARNISH (MERITS)



L601 INDUSTRY OPERATIONALLY VALID DATA  
REFERENCE FINAL VISCOSITY (% INCREASE)

