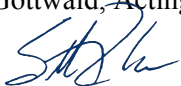




# Test Monitoring Center

Carnegie Mellon University  
6555 Penn Avenue, Pittsburgh, PA 15206, USA

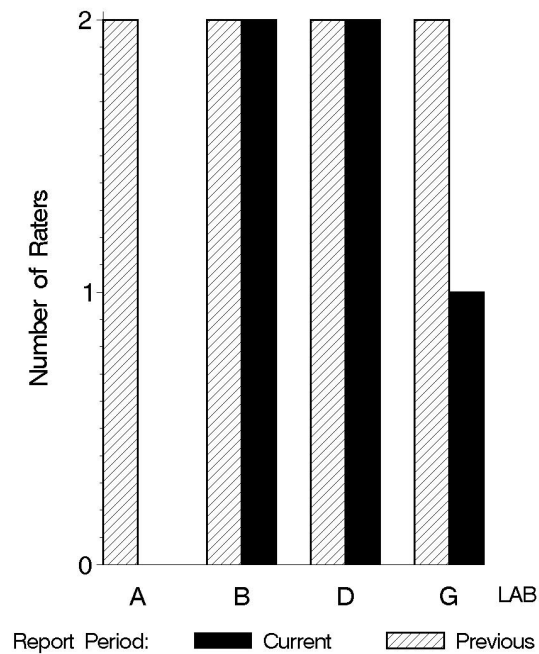
<http://astmtmc.cmu.edu>  
412-365-1000

MEMORANDUM: 11-067  
 DATE: December 14, 2011  
 TO: Thomas D. Gottwald, Acting Chairman, L-42 Surveillance Panel  
 FROM: Scott Parke   
 SUBJECT: L-42 Rater Calibration from April 1, 2011 through September 30, 2011

The following is a summary of L-42 rater calibration activity from April 1, 2011 through September 30, 2011.

	Reporting Data	Calibrated on 9-30-2011
Number of Raters	5	5

## BY-LAB RATER DISTRIBUTION

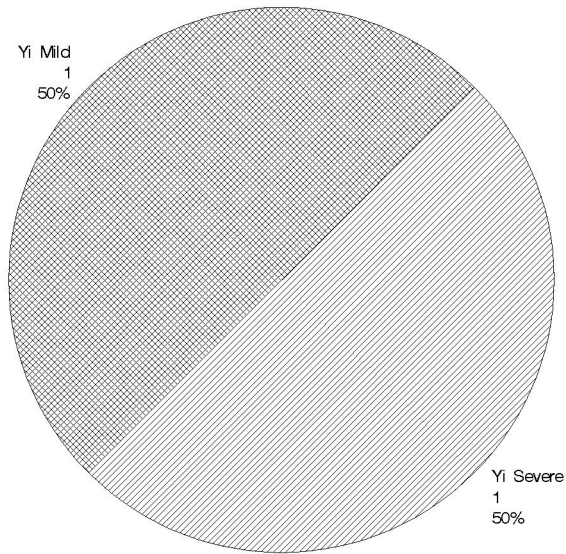


**Test Distribution by Oil and Validity**

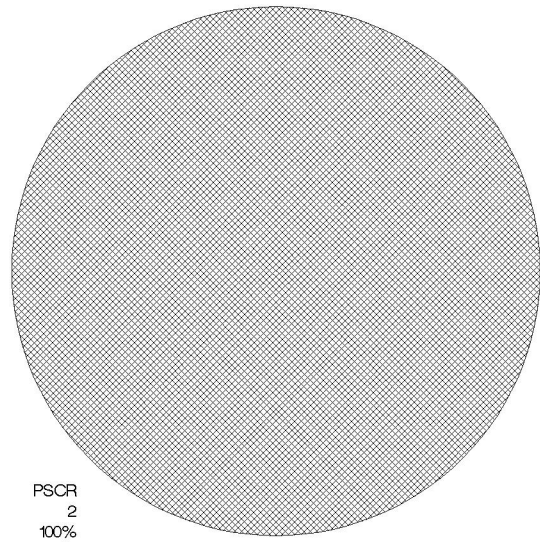
		Totals	
		Last Period	This Period
Accepted for calibration	AC	8	5
Rejected (mild)	OC	2	1
Rejected (severe)	OC	1	1
Rejected (multiple)	OC	0	0
Rejected (precision)	OC	1	0
Workshop data	AG	21	18
<b>Total</b>		<b>33</b>	<b>25</b>

**CAUSE OF REJECTED TESTS**

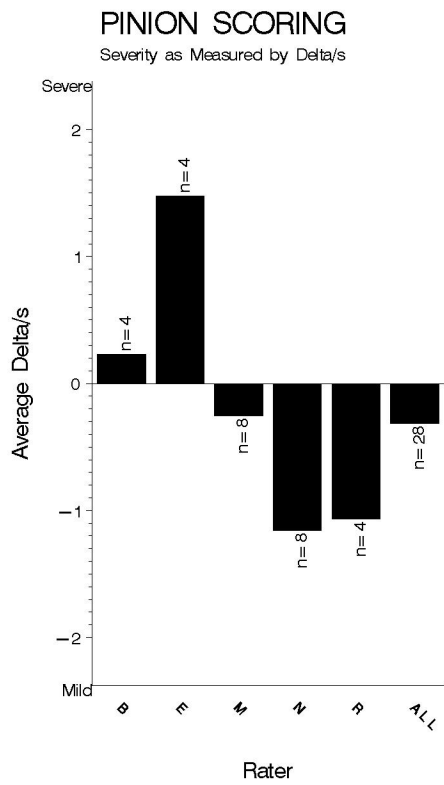
**DISTRIBUTION OF FAILING TESTS  
(By Alarm Type)**

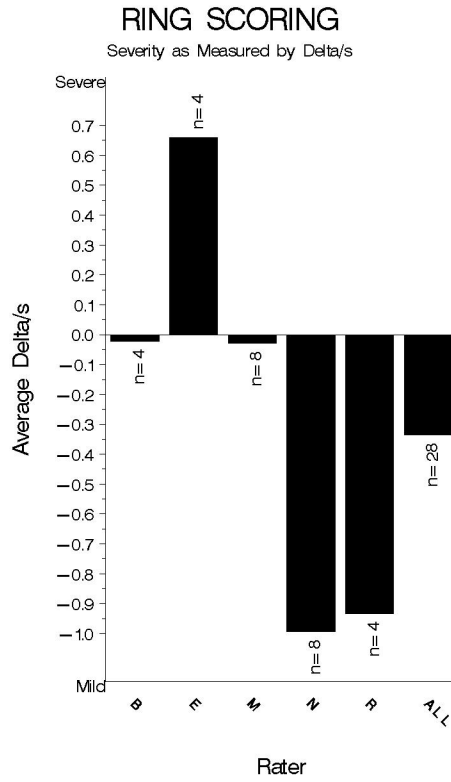


**DISTRIBUTION OF FAILING TESTS  
(By Test Parameter)**

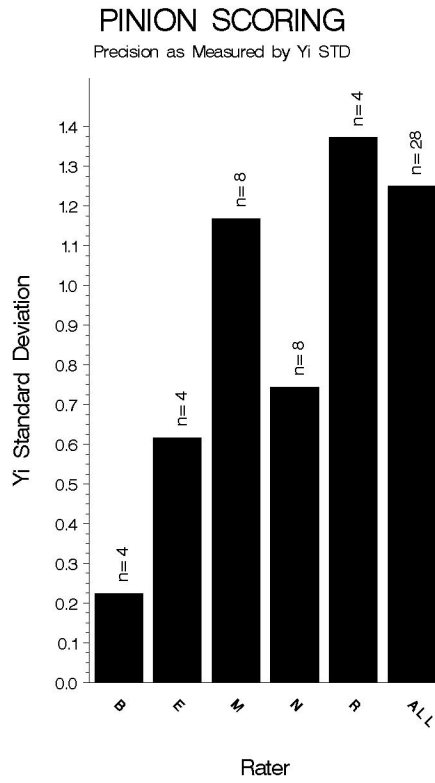


Rater	N	Pinion Scoring		Ring Scoring	
		Avg Yi	STD*	Avg Yi	STD*
B	4	0.226	0.222	-0.021	0.311
E	4	1.472	0.615	0.657	0.435
M	8	-0.247	1.166	-0.027	0.632
N	8	-1.150	0.742	-0.992	0.594
R	4	-1.061	1.371	-0.932	1.009
ALL	28	-0.308	1.248	-0.333	0.842

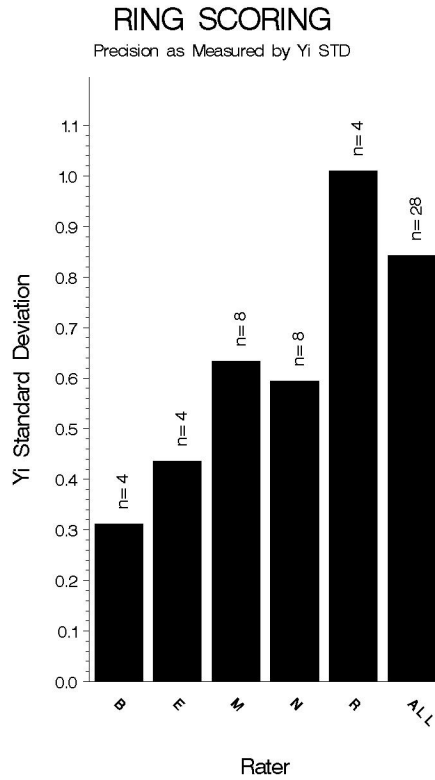




14.25.28 13DEC2011



14.25.28 13DEC2011



14.25.28 13DEC2011

INDUSTRY CONTROL CHARTS:

The industry control charts are shown beginning on the following page.

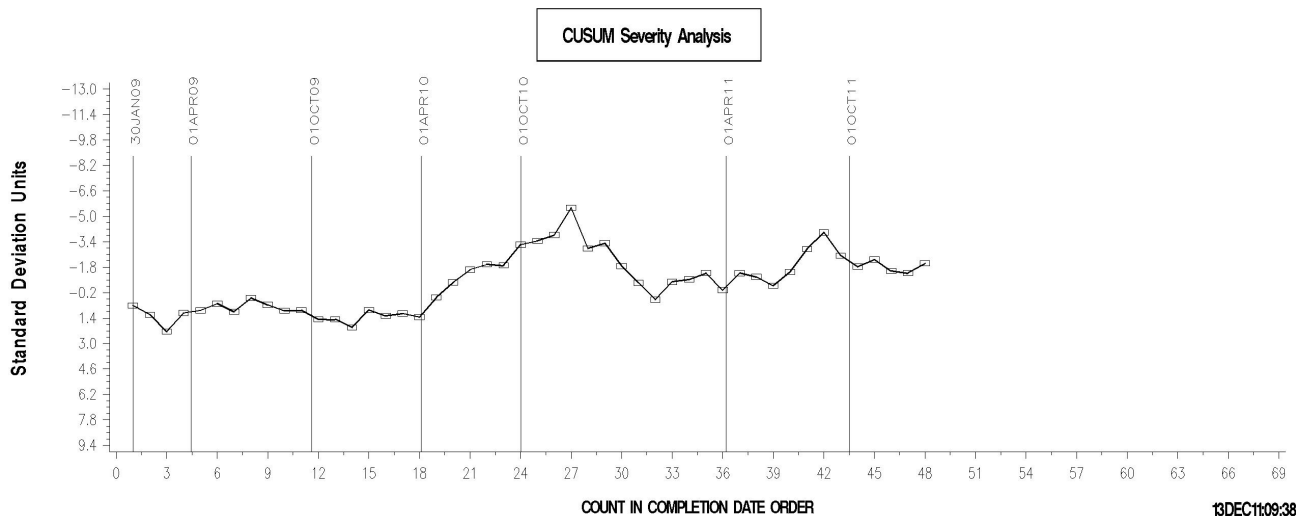
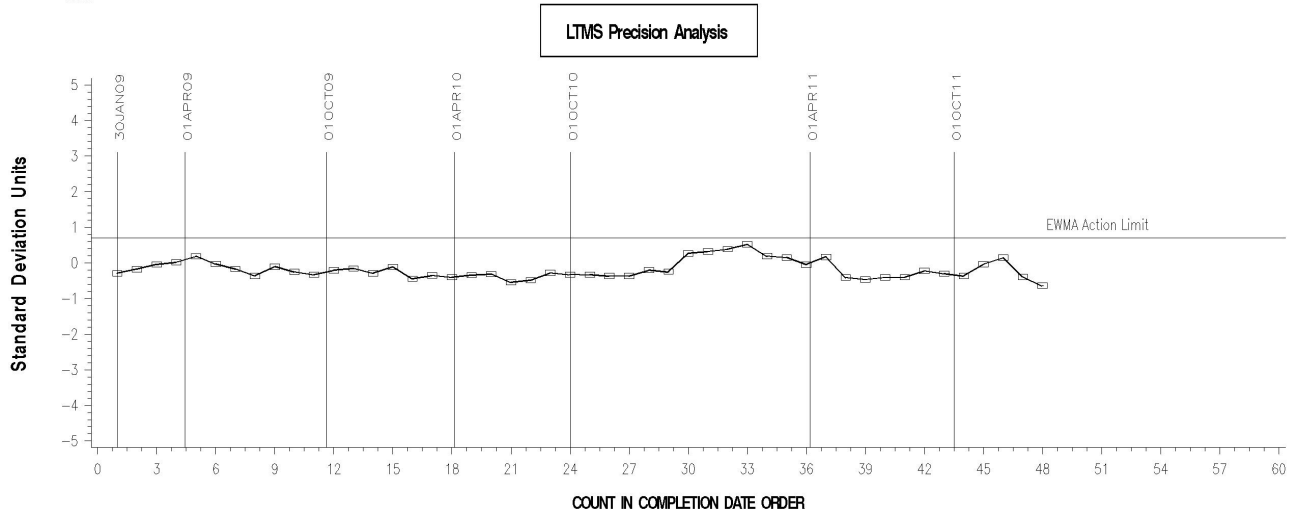
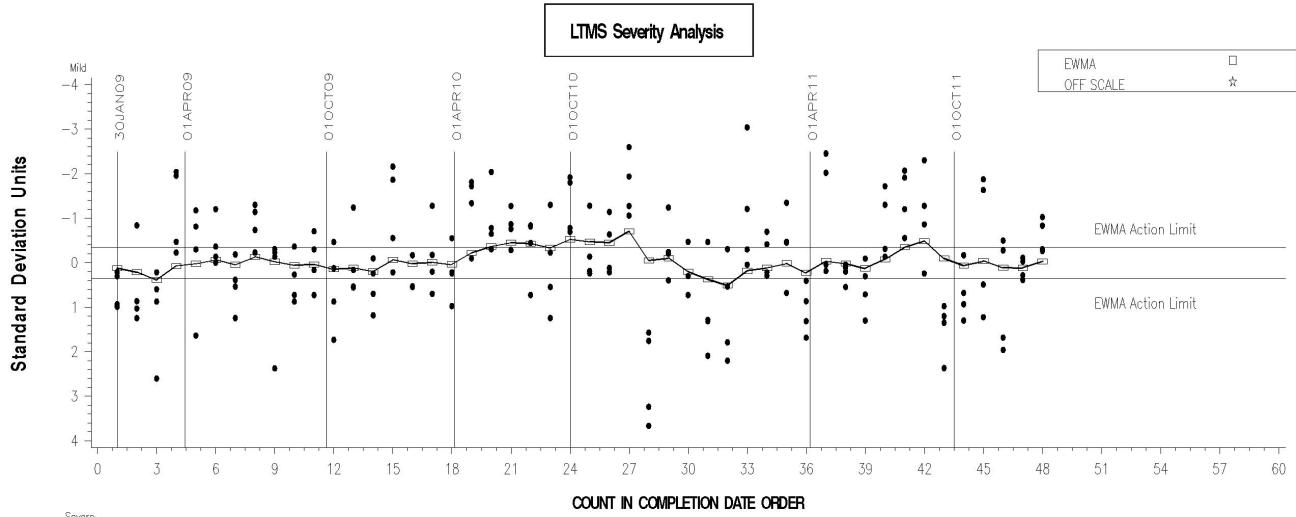
Over this report period, PSCR was slightly mild but exceeded limits for only one test. RSCR was also mild throughout this period. Updated targets have been introduced beginning in the next report period. This can be expected to help restore on-target performance.

Precision performance for both ring and pinion scoring remained within acceptable limits.

### L-42 RATER CALIBRATION INDUSTRY OPERATIONALLY VALID DATA



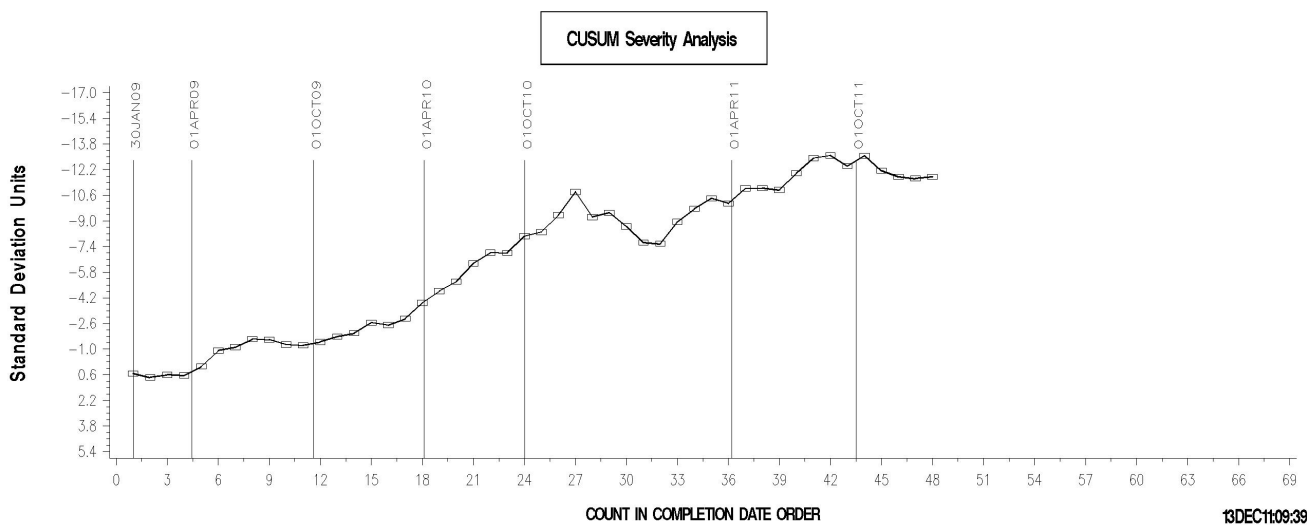
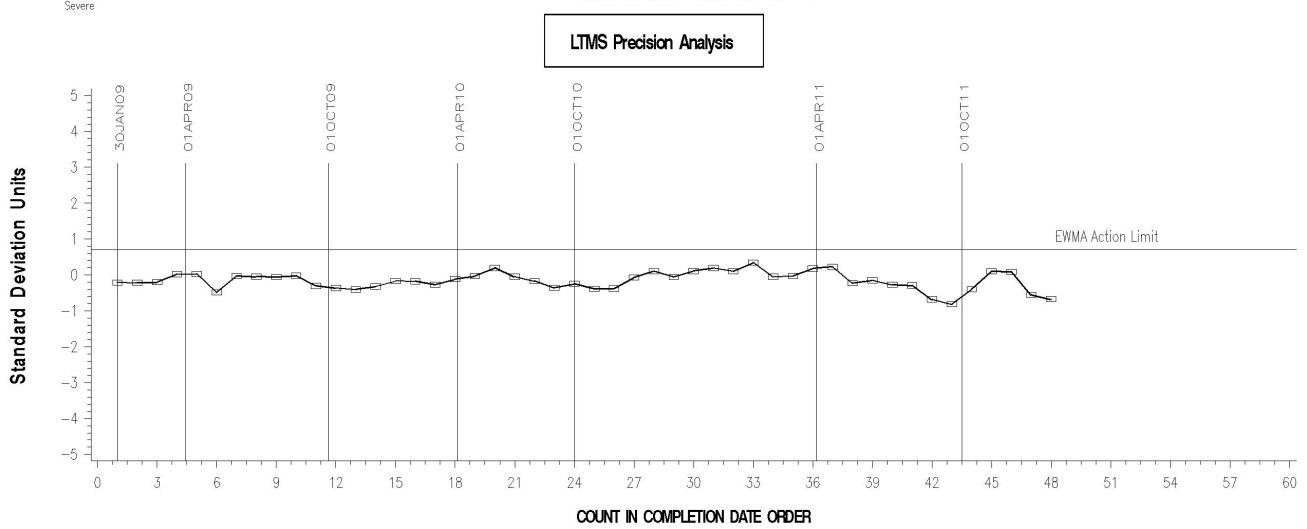
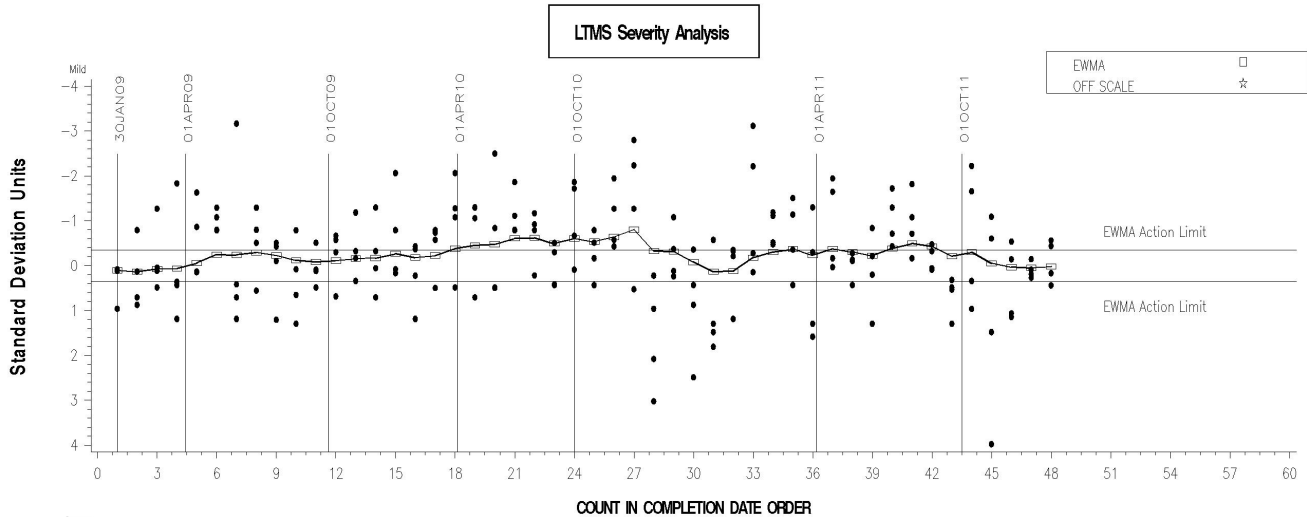
#### PINION SCORING



L-42 RATER CALIBRATION INDUSTRY OPERATIONALLY VALID DATA



RING SCORING



Memo 11-067

Page 8

SDP/sdp/mem11-067.sdp.docx

cc: Frank Farber

Jeff Clark

L42 Surveillance Panel

<ftp://ftp.astmtmc.cmu.edu/docs/gears/l42rc/semiannualreports/l42rc-10-2011.pdf>

Distribution: email