



Test Monitoring Center

203 Armstrong Drive, Freeport, PA 16229, USA

www.astmtmc.org
412-365-1000

MEMORANDUM: 23-034
DATE: October 26, 2023
TO: Nick Schaup, Chairman, L-37 Surveillance Panel
FROM: Dylan Beck *Dylan Beck*
SUBJECT: L-37 Rater Calibration from April 1, 2023, through September 30, 2023

Attached is a summary of L-37 rater calibration activity this period.

DJB/djb/mem23-034.djb.doc

cc: Jeff Clark

Sean Moyer

L-37 Surveillance Panel

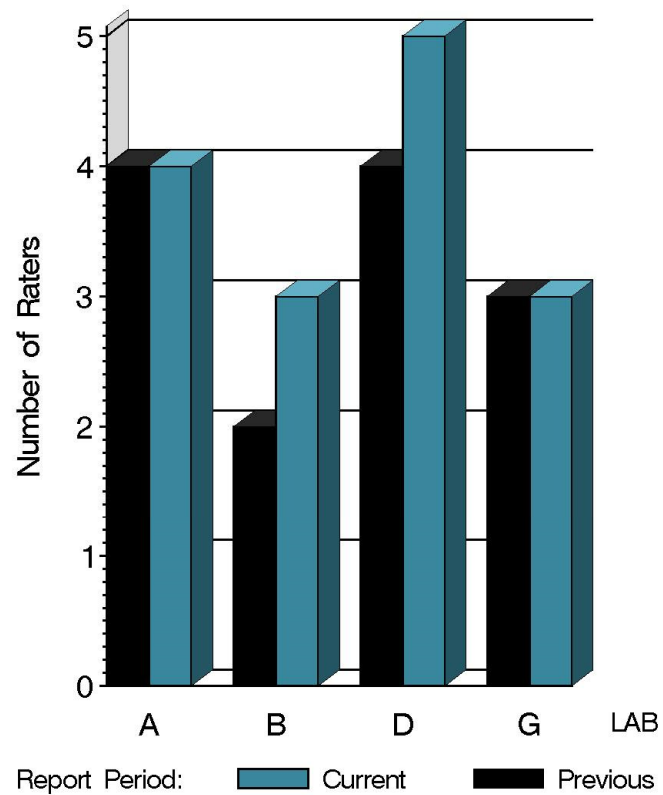
<https://www.astmtmc.org/ftp/docs/gear/l37rc/semiannualreports/l37rc-10-2023.pdf>

Distribution: email

L-37 Rater Calibration

	Reporting Data	Calibrated on 9-30-23
Number of Labs	4	4
Number of Raters	15	15

BY-LAB RATER DISTRIBUTION



14:13:27 24OCT2023



Test Monitoring Center

203 Armstrong Drive, Freeport, PA 16229, USA

www.astmtmc.org
412-365-1000

L-37 Rater Calibration

Test Distribution by Validity

		Totals	
		Last Period	This Period
Accepted for calibration	AC	13	18
Rejected (Mild)	OC	1	1
Rejected (Severe)	OC	3	4
Rejected (Multiple)	OC	0	3
Rejected (Precision)	OC	0	0
Workshop data	AG	9	4
Total		26	30

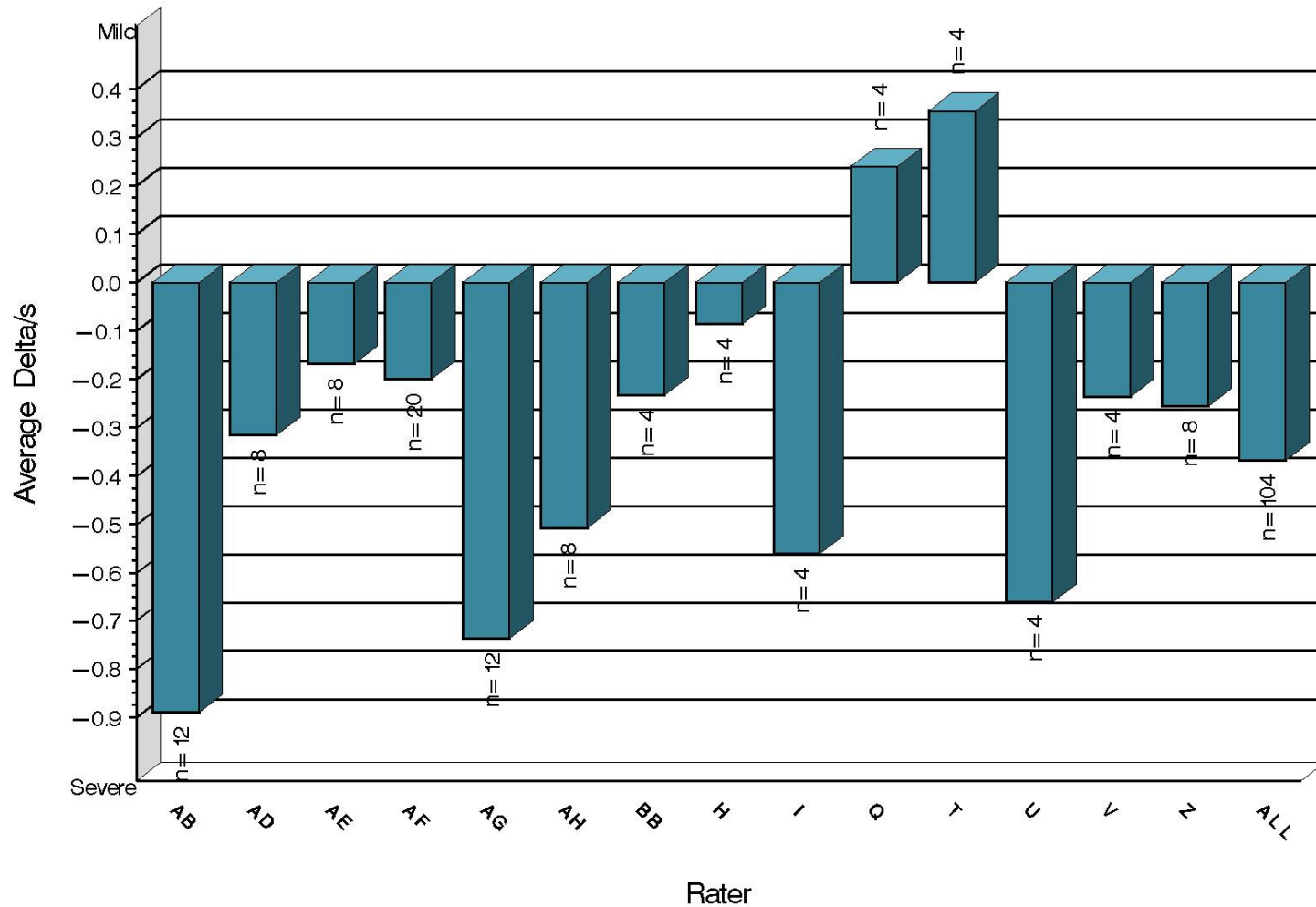
L-37 Rater Calibration

Rater	N	RIDG		RIPP		SPIT		WEAR	
		Avg Yi	STD*	Avg Yi	STD*	Avg Yi	STD*	Avg Yi	STD*
AB	12	-0.891	1.931	0.234	1.473	0.115	0.277	-0.544	0.608
AD	8	-0.315	0.777	-0.359	1.211	0.206	0.359	-0.126	1.051
AE	8	-0.169	0.639	0.383	0.752	-0.199	0.455	-0.086	1.211
AF	20	-0.200	0.855	0.033	1.568	-0.276	1.292	-0.074	1.656
AG	12	-0.738	1.104	-0.961	1.631	-0.047	1.167	-0.560	0.851
AH	8	-0.507	1.648	0.099	2.073	-2.327	3.699	-0.300	1.018
BB	4	-0.233	0.599	0.025	1.141	0.412	0.396	-0.328	0.720
H	4	-0.086	0.739	0.241	0.781	0.100	0.381	0.240	0.825
I	4	-0.561	0.833	-0.651	0.765	-0.603	1.024	0.315	1.326
Q	4	0.241	0.888	0.004	0.728	0.435	0.230	-0.121	0.700
T	4	0.355	0.389	-0.042	0.184	0.136	0.382	0.725	1.194
U	4	-0.660	0.533	-0.566	0.702	-0.078	0.156	-0.625	0.910
V	4	-0.237	0.716	0.088	0.571	0.012	0.601	-0.209	0.554
Z	8	-0.256	1.321	-0.321	1.166	0.137	0.447	-0.005	0.927
ALL	104	-0.368	1.111	-0.127	1.328	-0.197	1.385	-0.181	1.094

* Due to the small number of ratings per pinion, the standard deviation of the Yi values is given in place of a pooled standard deviation.

L-37 Rater Calibration

RIDGING
Severity as Measured by Delta/s



14:04:18 25OCT2023



Test Monitoring Center

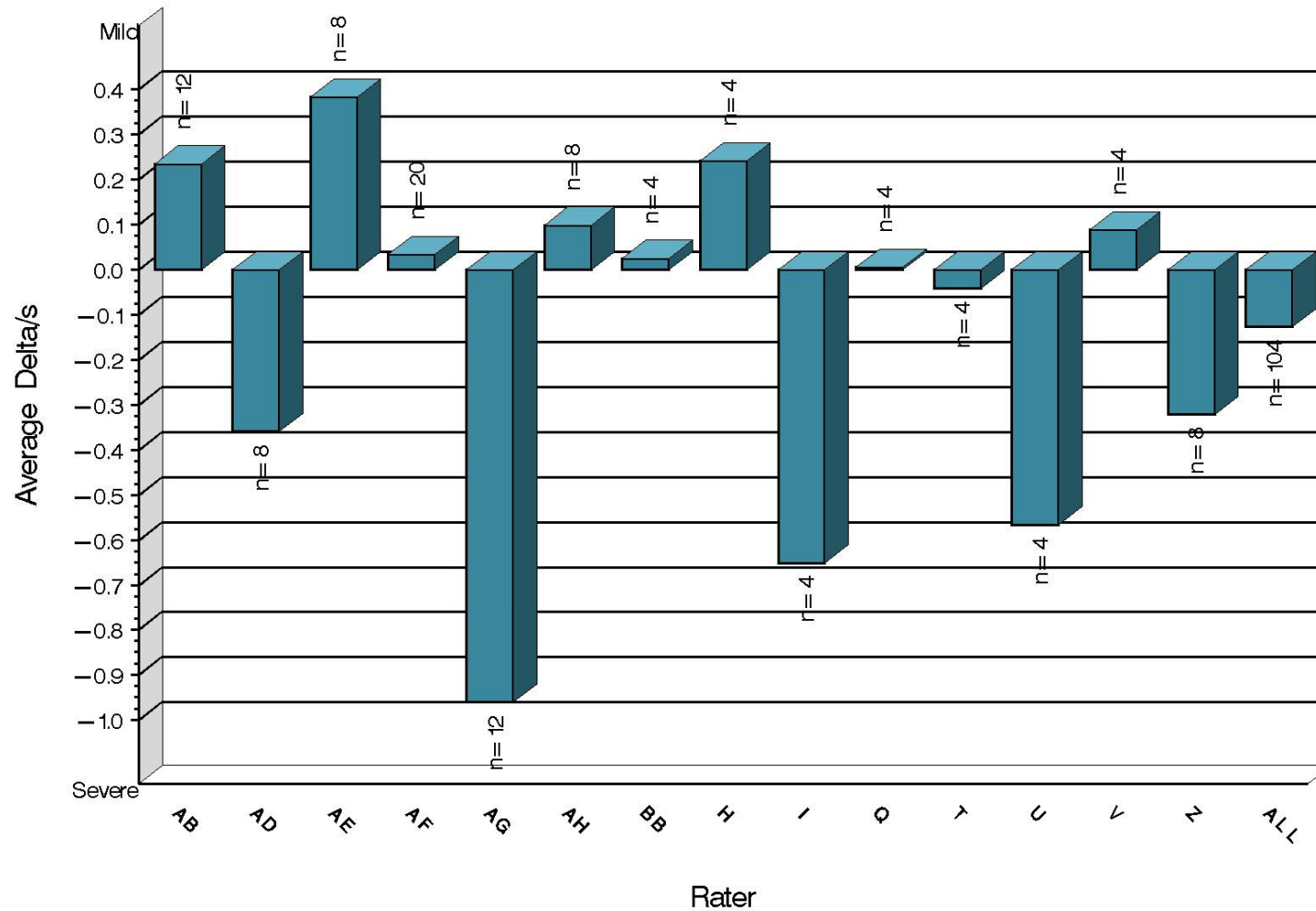
203 Armstrong Drive, Freeport, PA 16229, USA

www.astmtmc.org
412-365-1000

L-37 Rater Calibration

RIPPLING

Severity as Measured by Delta/s



14:04:18 25OCT2023



Test Monitoring Center

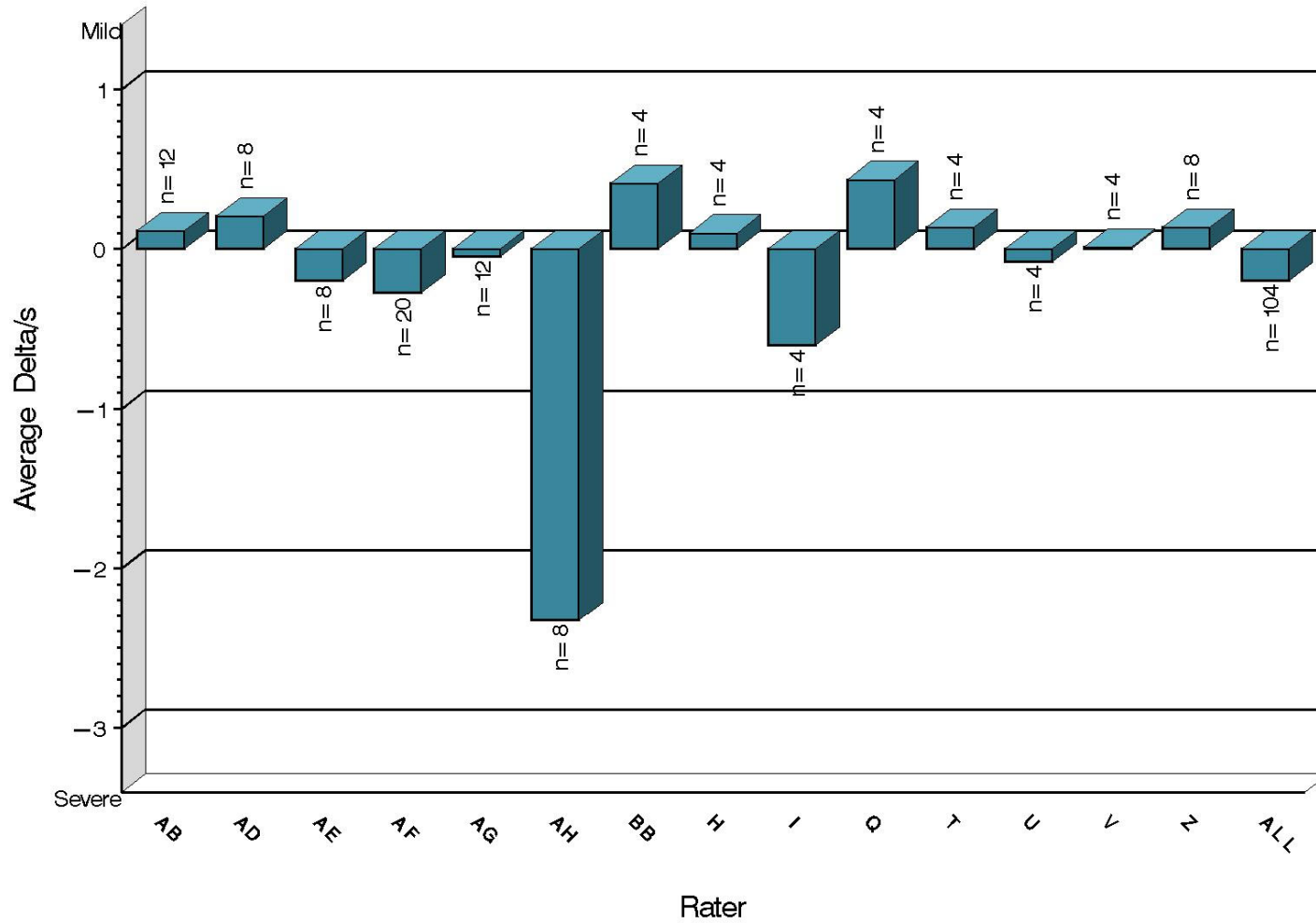
203 Armstrong Drive, Freeport, PA 16229, USA

www.astmtmc.org
412-365-1000

L-37 Rater Calibration

SPITTING

Severity as Measured by Delta/s



14:04:18 25OCT2023



A Program of ASTM International

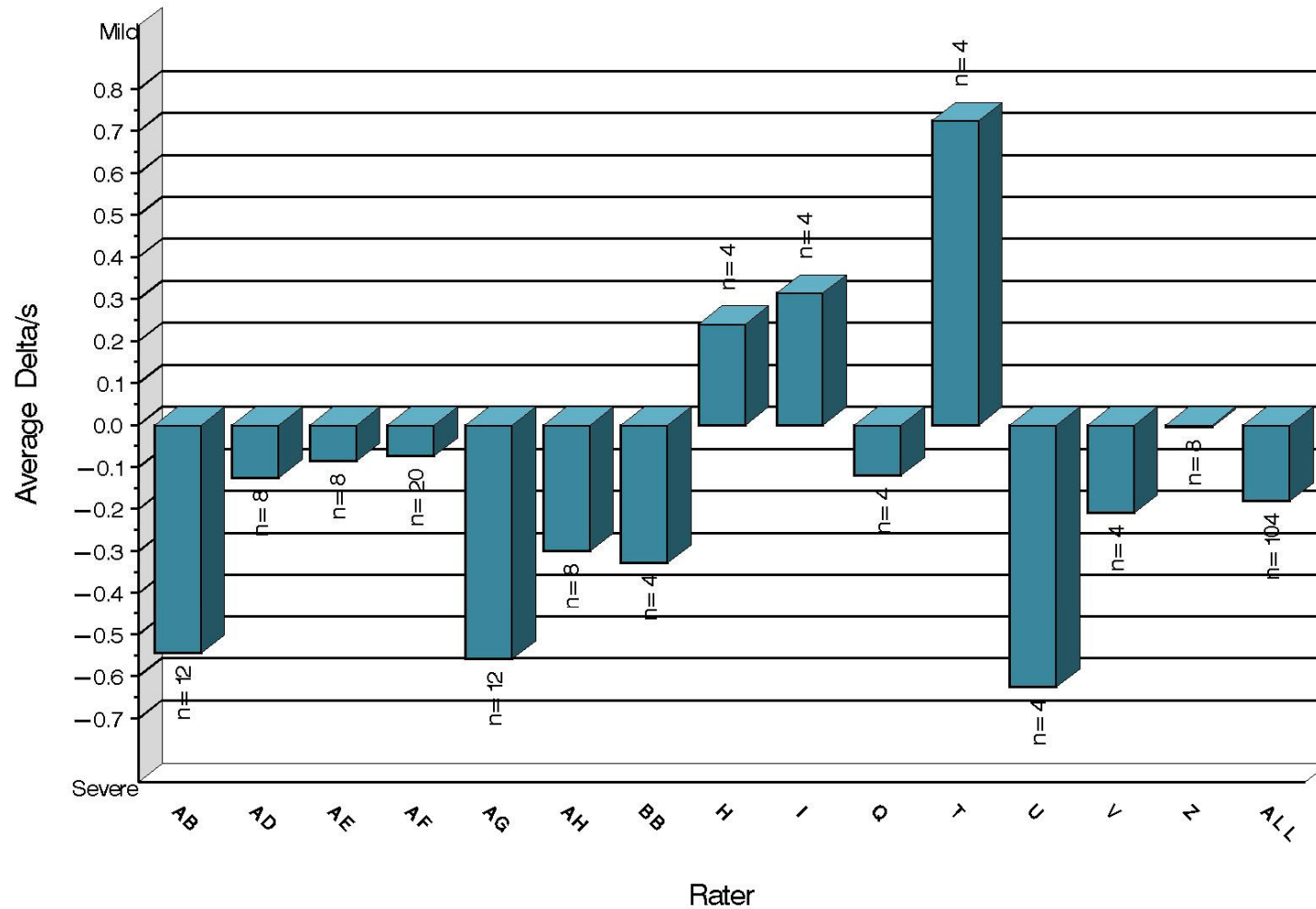
Test Monitoring Center

203 Armstrong Drive, Freeport, PA 16229, USA

www.astmtmc.org
412-365-1000

L-37 Rater Calibration

WEAR
Severity as Measured by Delta/s



14:04:18 25OCT2023



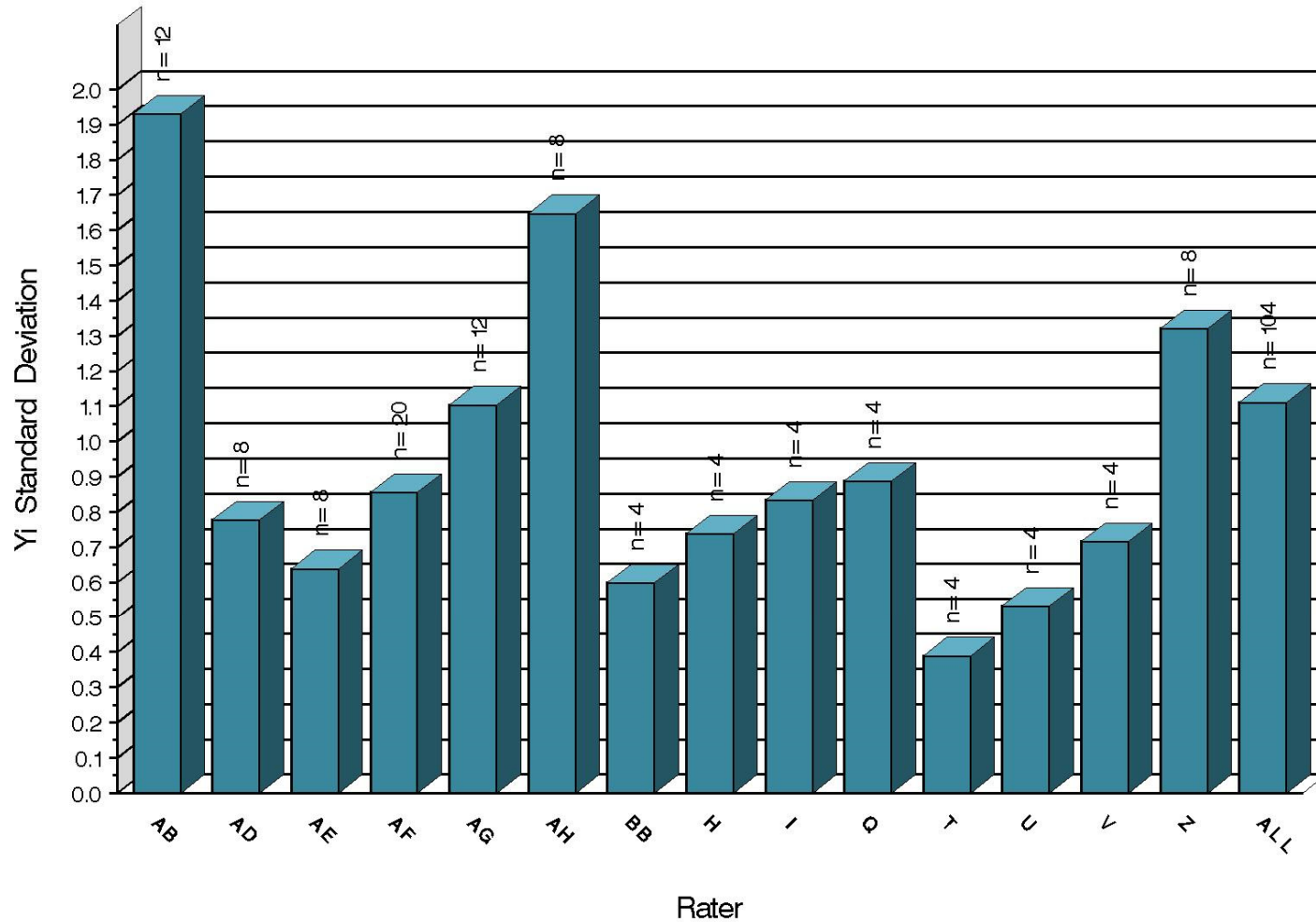
Test Monitoring Center

203 Armstrong Drive, Freeport, PA 16229, USA

www.astmtmc.org
412-365-1000

L-37 Rater Calibration

RIDGING
Precision as Measured by Y1 STD



14:04:18 25OCT2023



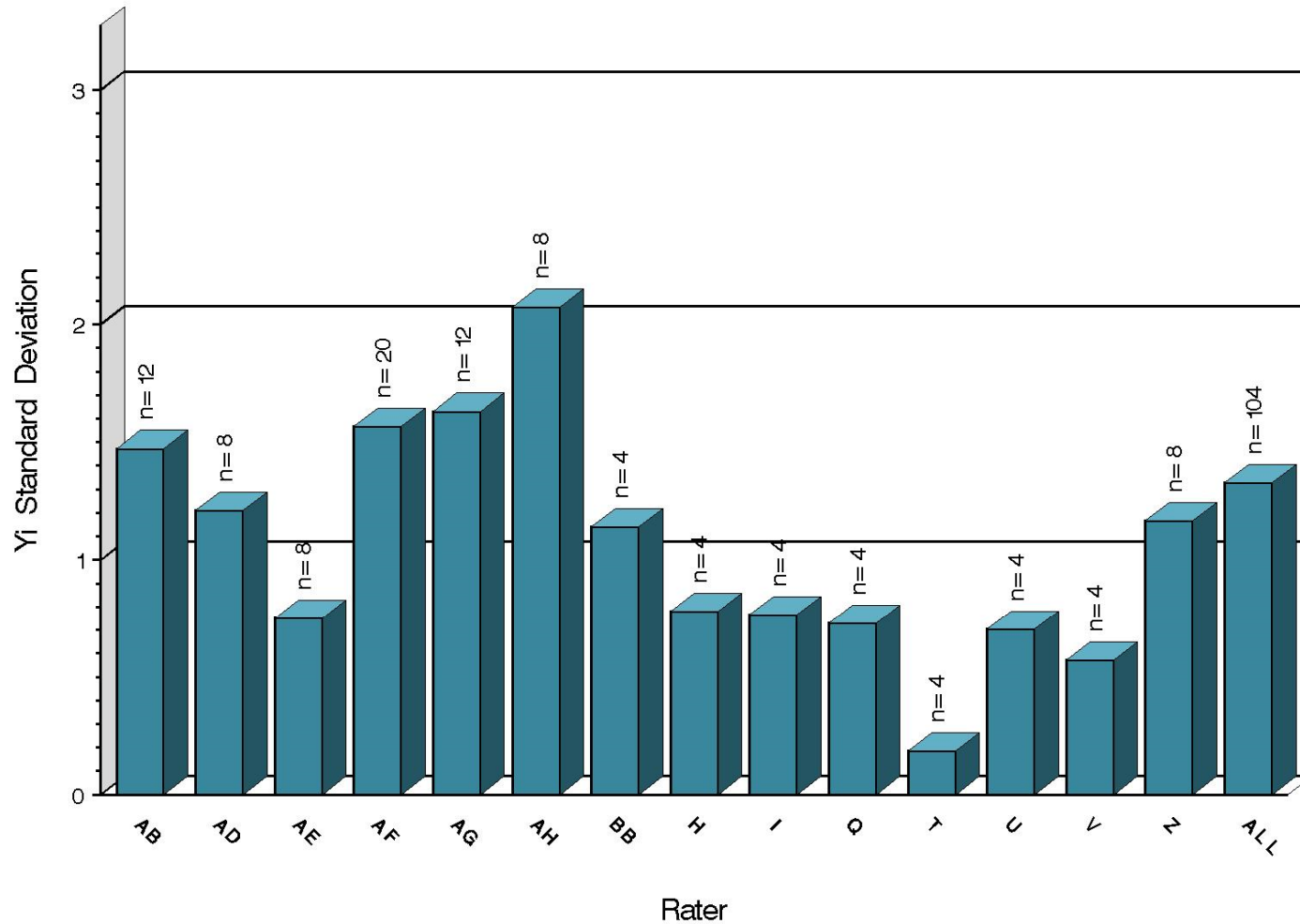
Test Monitoring Center

203 Armstrong Drive, Freeport, PA 16229, USA

www.astmtmc.org
412-365-1000

L-37 Rater Calibration

RIPPLING
Precision as Measured by Yi STD



14:04:18 25OCT2023



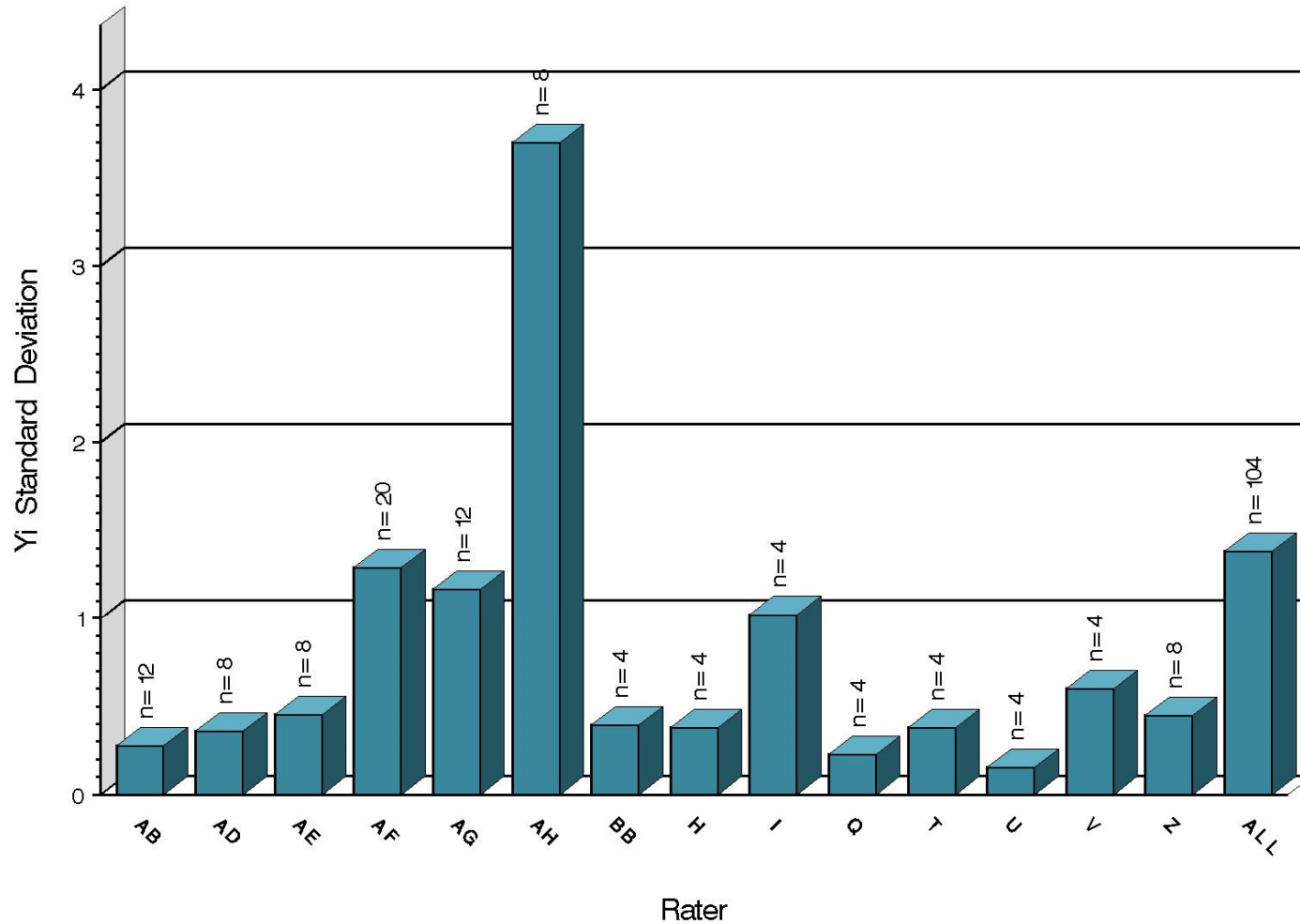
Test Monitoring Center

203 Armstrong Drive, Freeport, PA 16229, USA

www.astmtmc.org
412-365-1000

L-37 Rater Calibration

SPITTING
Precision as Measured by Yi STD



14:04:18 25OCT2023



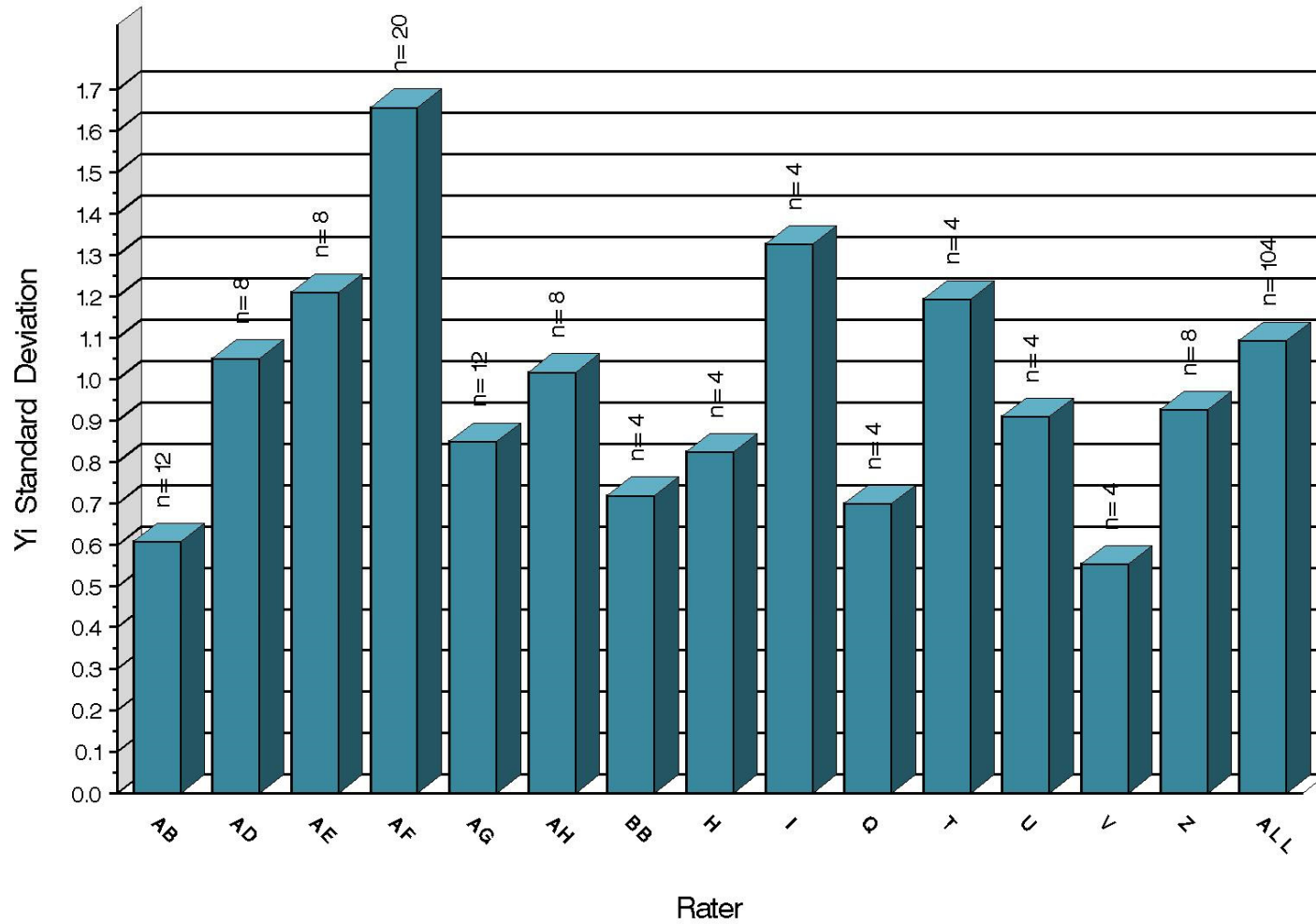
Test Monitoring Center

203 Armstrong Drive, Freeport, PA 16229, USA

www.astmtmc.org
412-365-1000

L-37 Rater Calibration

WEAR
Precision as Measured by Yi STD



14:04:18 25OCT2023



Test Monitoring Center

203 Armstrong Drive, Freeport, PA 16229, USA

www.astmtmc.org
412-365-1000

L-37 Rater Calibration

SUMMARY OF SEVERITY & PRECISION

Severity

RIDG ended the reporting period exceeding the action limit. RIPP and SPIT briefly exceeded the action limit this period but have since returned within limits. WEAR remained within limits throughout the period.

Precision

All parameters remained within limits throughout the period.

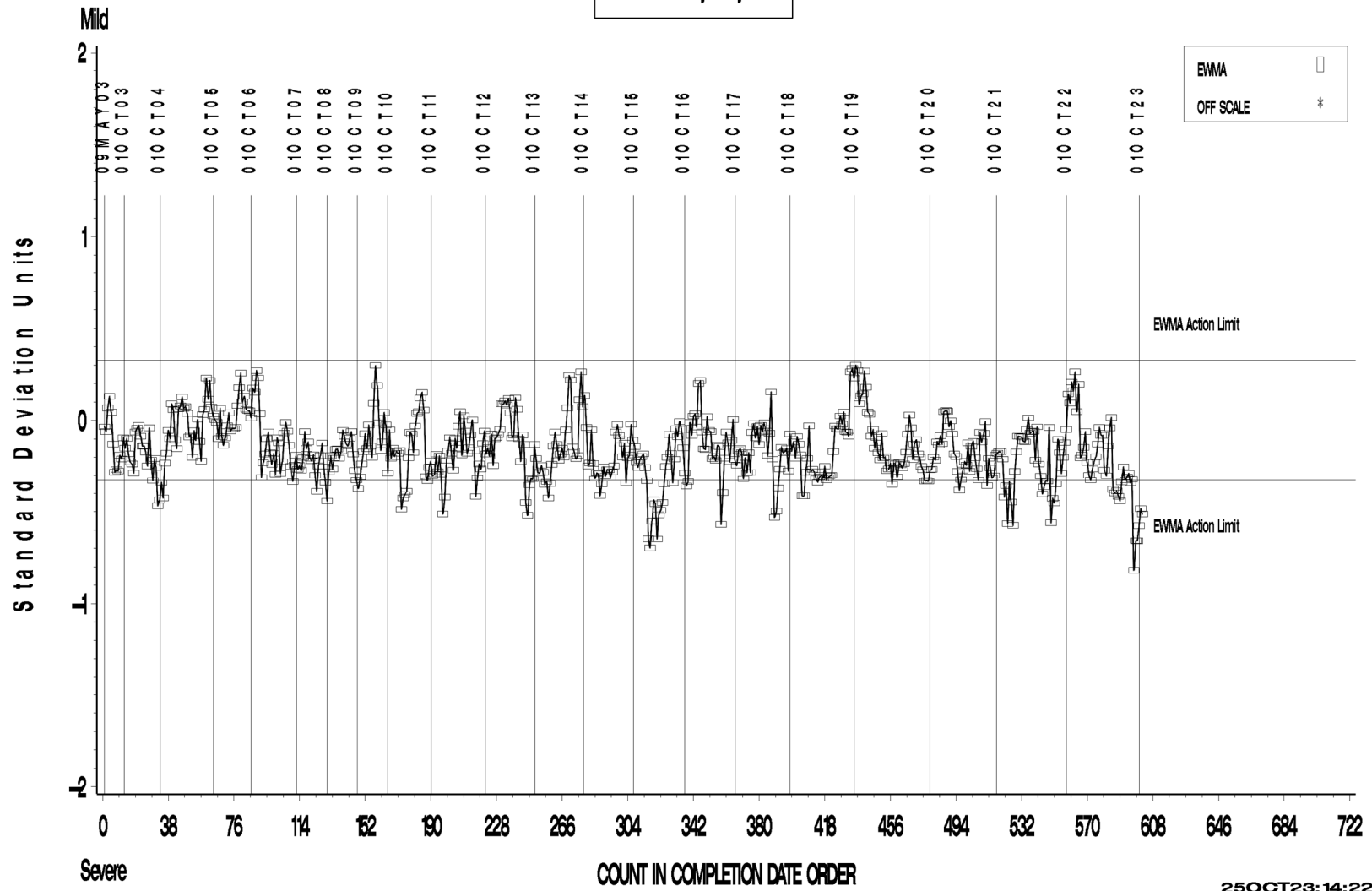
Industry rater control charts follow.

L-37 Rater Calibration

L-37 RATER CALIBRATION INDUSTRY OPERATIONALLY VALID DATA

RIDGING

LTMS Severity Analysis



25OCT23: 14:22



Test Monitoring Center

203 Armstrong Drive, Freeport, PA 16229, USA

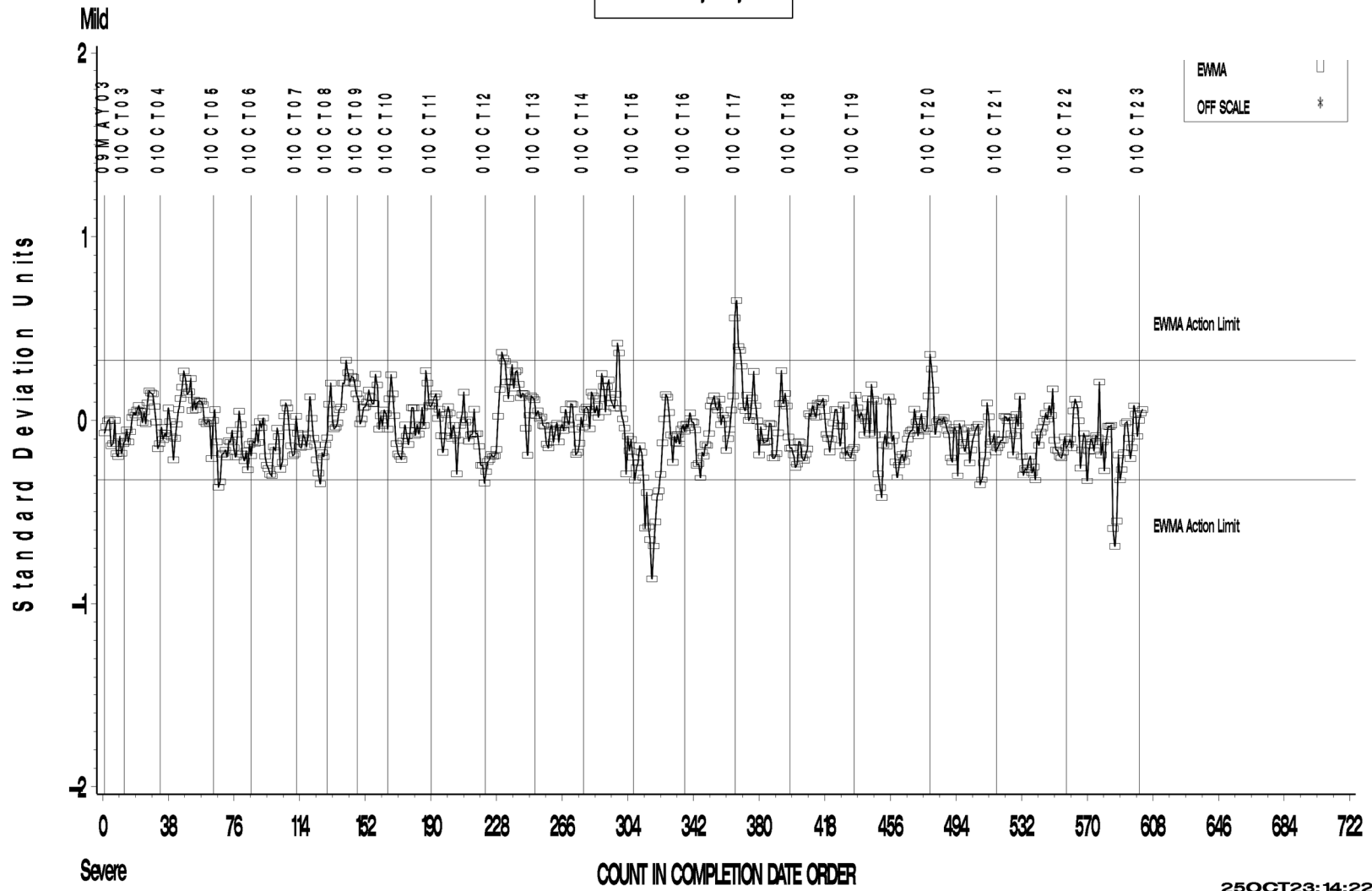
www.astmtmc.org
412-365-1000

L-37 Rater Calibration

L-37 RATER CALIBRATION INDUSTRY OPERATIONALLY VALID DATA

RIPPLING

LTMS Severity Analysis



25OCT23: 14:22



Test Monitoring Center

203 Armstrong Drive, Freeport, PA 16229, USA

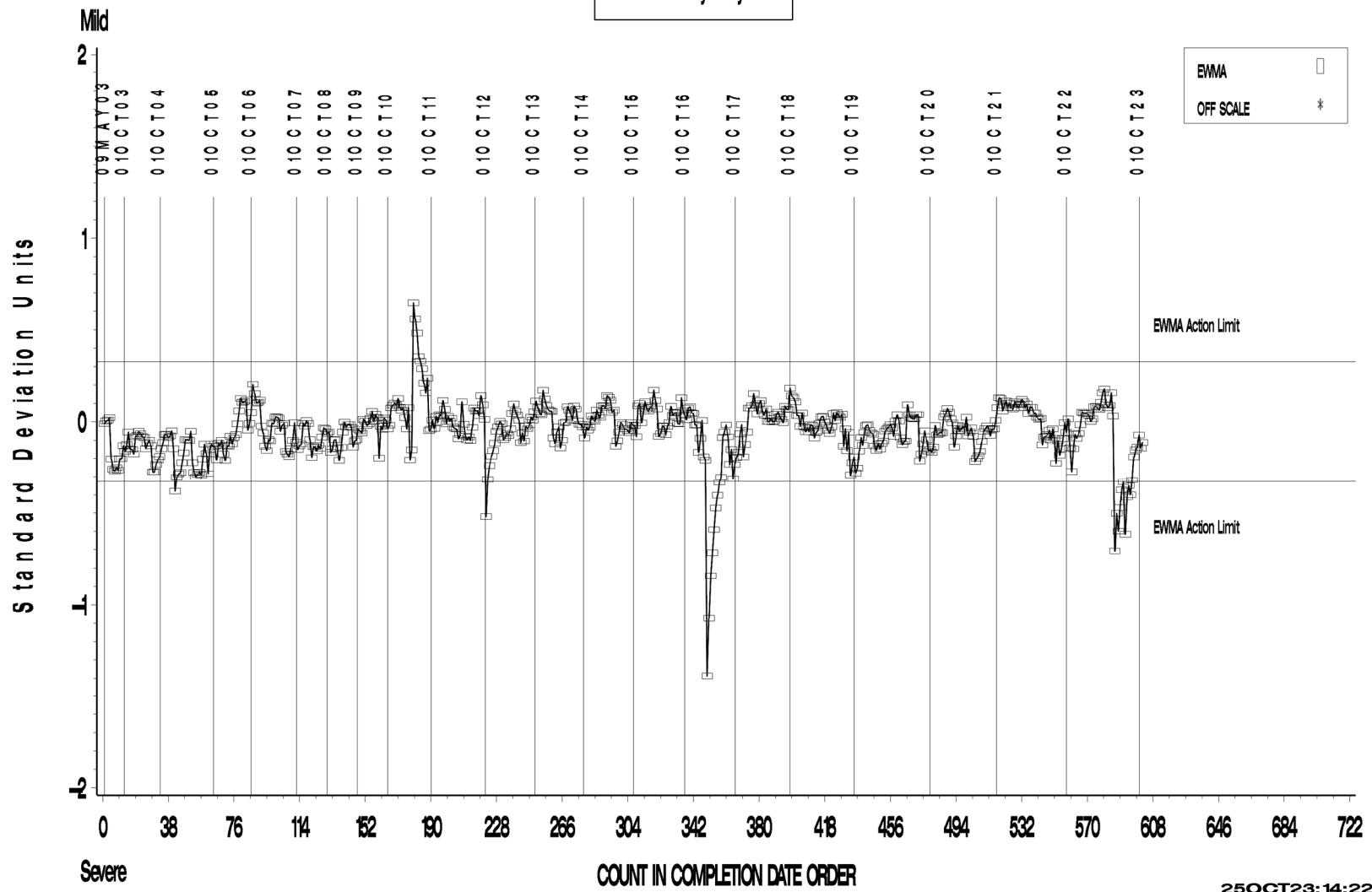
www.astmtmc.org
412-365-1000

L-37 Rater Calibration

L-37 RATER CALIBRATION INDUSTRY OPERATIONALLY VALID DATA

SPITTING

LTMS Severity Analysis



25OCT23: 14:22



Test Monitoring Center

203 Armstrong Drive, Freeport, PA 16229, USA

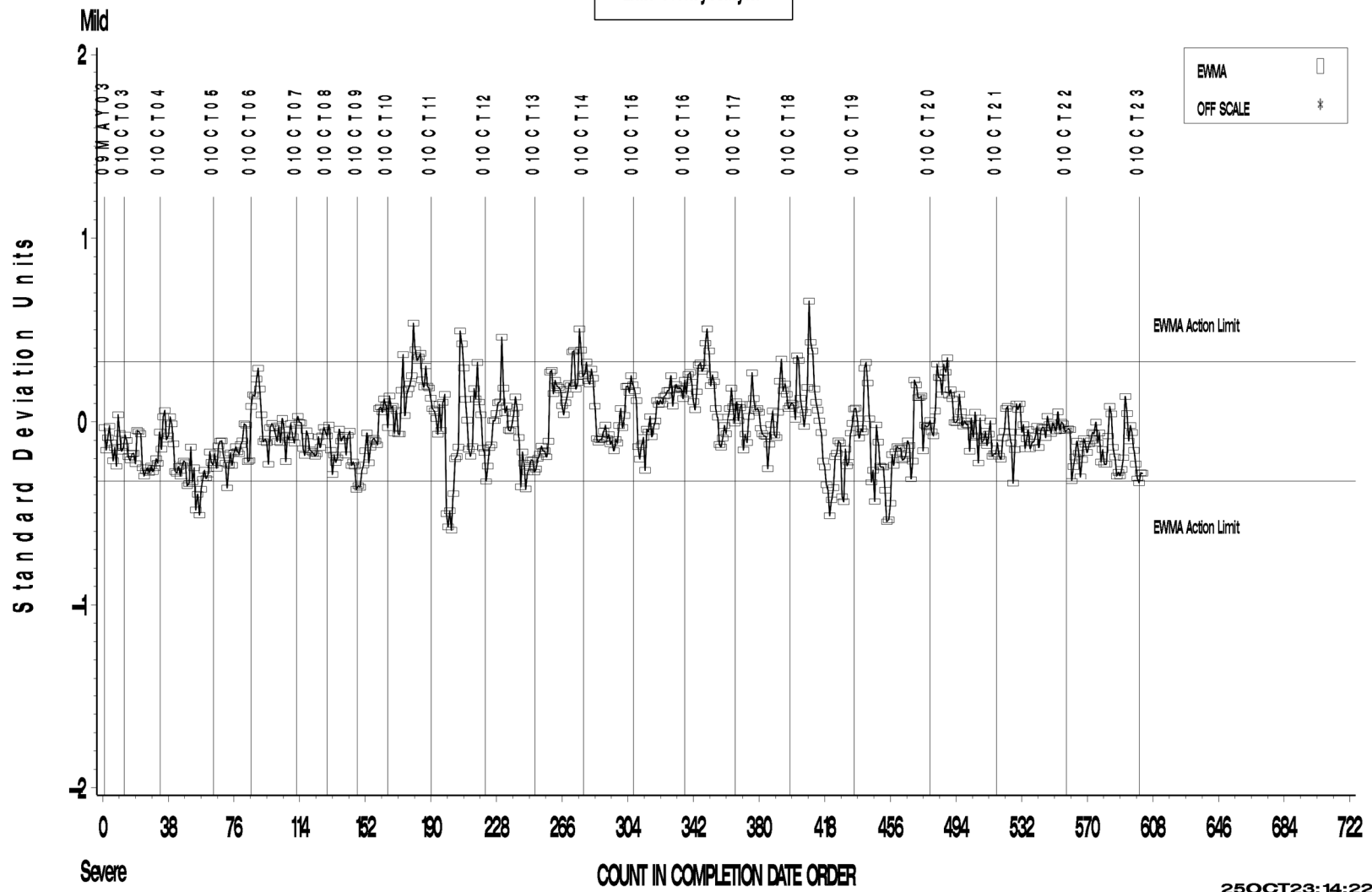
www.astmtmc.org
412-365-1000

L-37 Rater Calibration

L-37 RATER CALIBRATION INDUSTRY OPERATIONALLY VALID DATA

WEAR

LTMS Severity Analysis



25OCT23: 14:22



Test Monitoring Center

203 Armstrong Drive, Freeport, PA 16229, USA

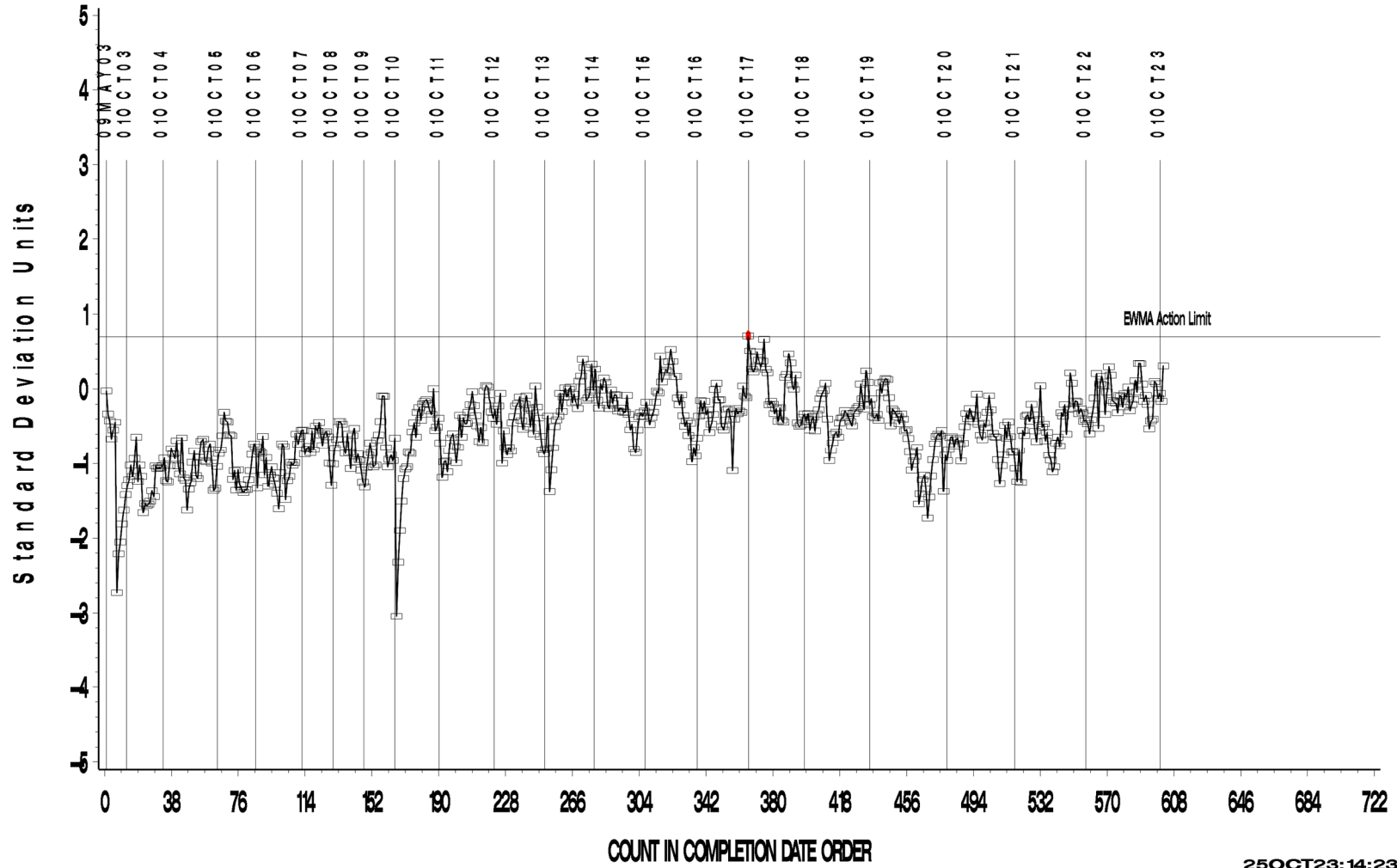
www.astmtmc.org
412-365-1000

L-37 Rater Calibration

L-37 RATER CALIBRATION INDUSTRY OPERATIONALLY VALID DATA

RIDGING

LTMS Precision Analysis



25OCT23: 14:23



Test Monitoring Center

203 Armstrong Drive, Freeport, PA 16229, USA

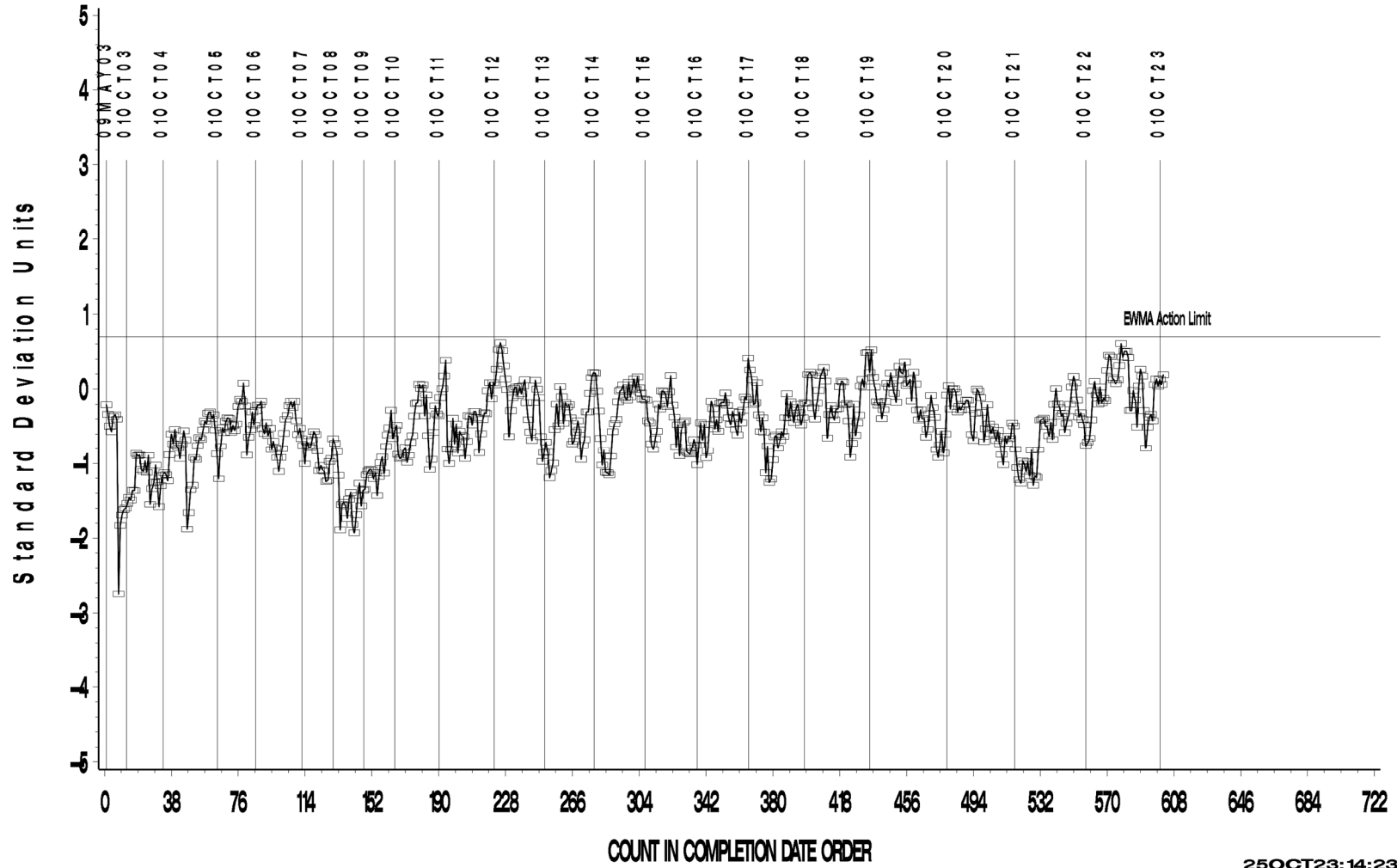
www.astmtmc.org
412-365-1000

L-37 Rater Calibration

L-37 RATER CALIBRATION INDUSTRY OPERATIONALLY VALID DATA

RIPPLING

LTMS Precision Analysis



25OCT23: 14:23



Test Monitoring Center

203 Armstrong Drive, Freeport, PA 16229, USA

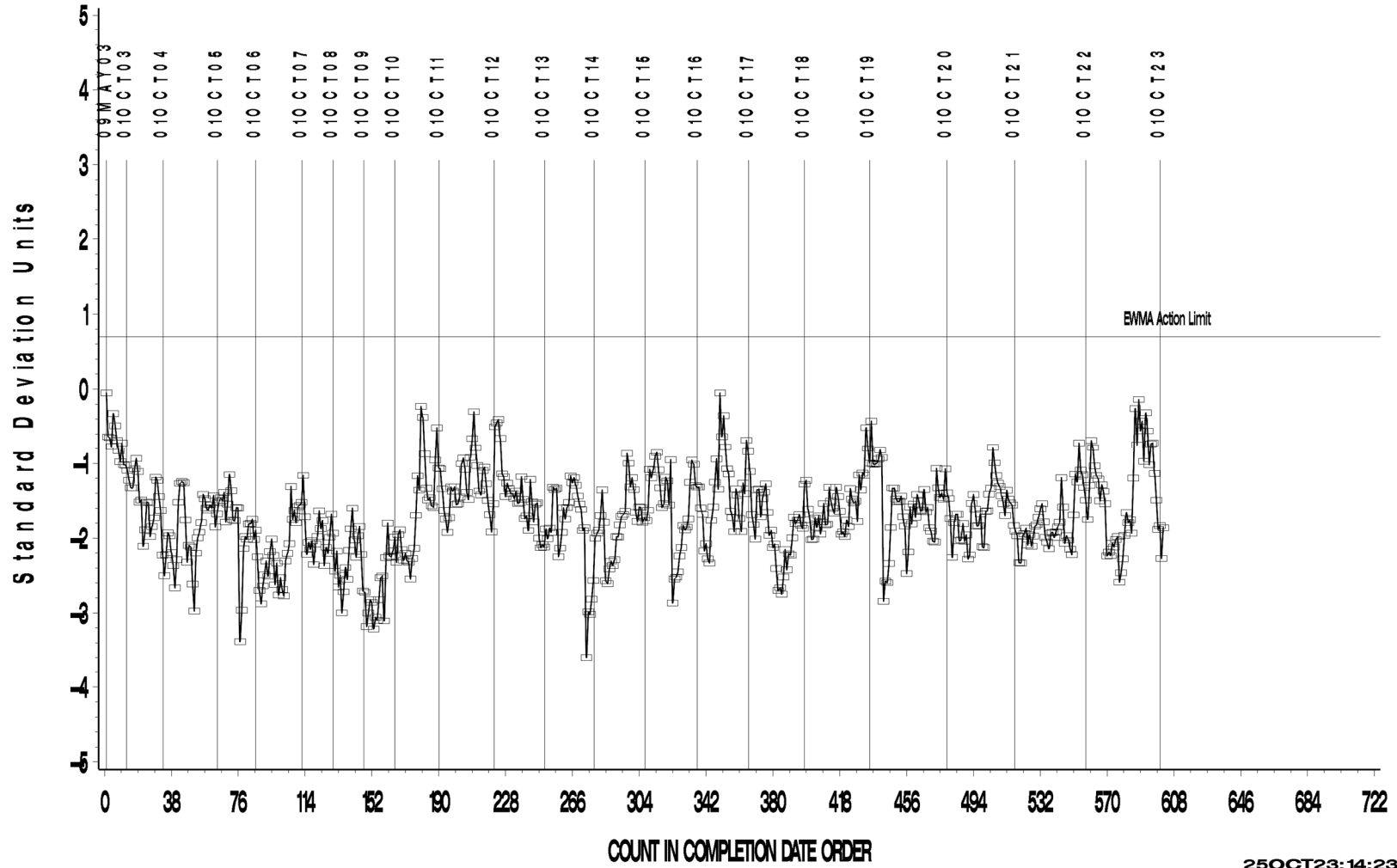
www.astmtmc.org
412-365-1000

L-37 Rater Calibration

L-37 RATER CALIBRATION INDUSTRY OPERATIONALLY VALID DATA

SPITTING

LTMS Precision Analysis



25OCT23:14:23



Test Monitoring Center

203 Armstrong Drive, Freeport, PA 16229, USA

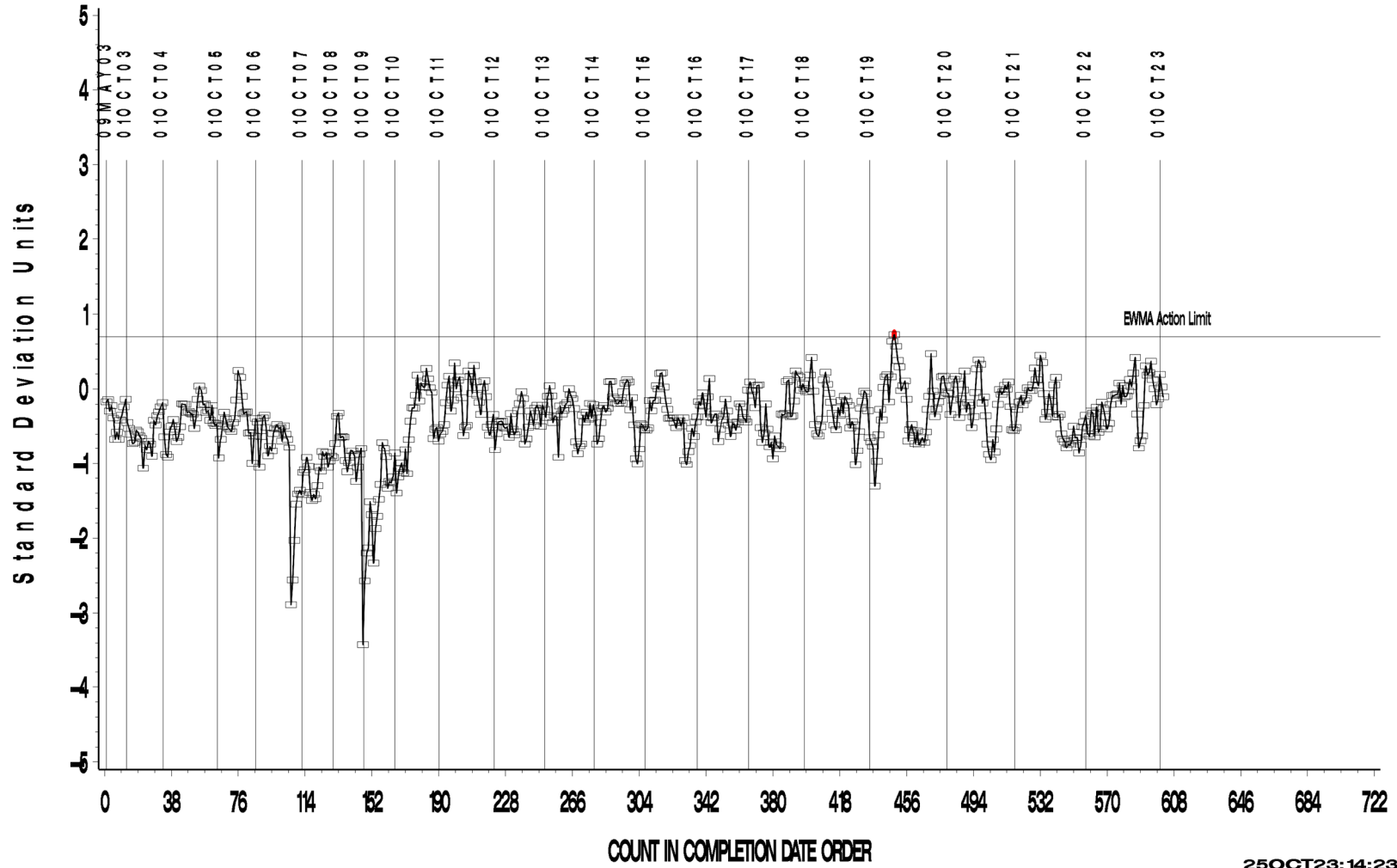
www.astmtmc.org
412-365-1000

L-37 Rater Calibration

L-37 RATER CALIBRATION INDUSTRY OPERATIONALLY VALID DATA

WEAR

LTMS Precision Analysis



25OCT23: 14:23



Test Monitoring Center

203 Armstrong Drive, Freeport, PA 16229, USA

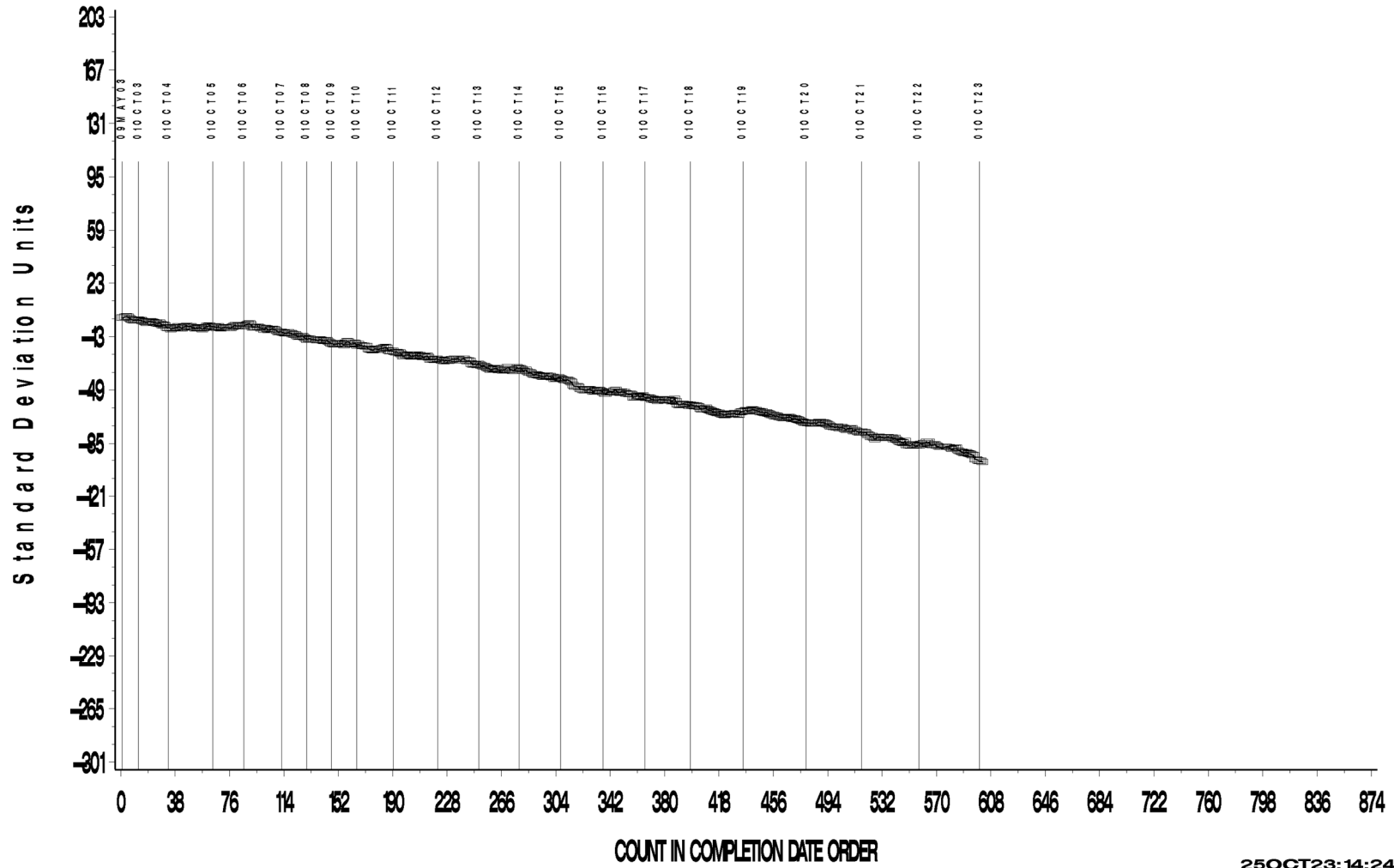
www.astmtmc.org
412-365-1000

L-37 Rater Calibration

L-37 RATER CALIBRATION INDUSTRY OPERATIONALLY VALID DATA

RIDGING

CUSUM Severity Analysis



25OCT23: 14:24



Test Monitoring Center

203 Armstrong Drive, Freeport, PA 16229, USA

www.astmtmc.org
412-365-1000

L-37 Rater Calibration

L-37 RATER CALIBRATION INDUSTRY OPERATIONALLY VALID DATA

RIPPLING

CUSUM Severity Analysis



25OCT23: 14:24



Test Monitoring Center

203 Armstrong Drive, Freeport, PA 16229, USA

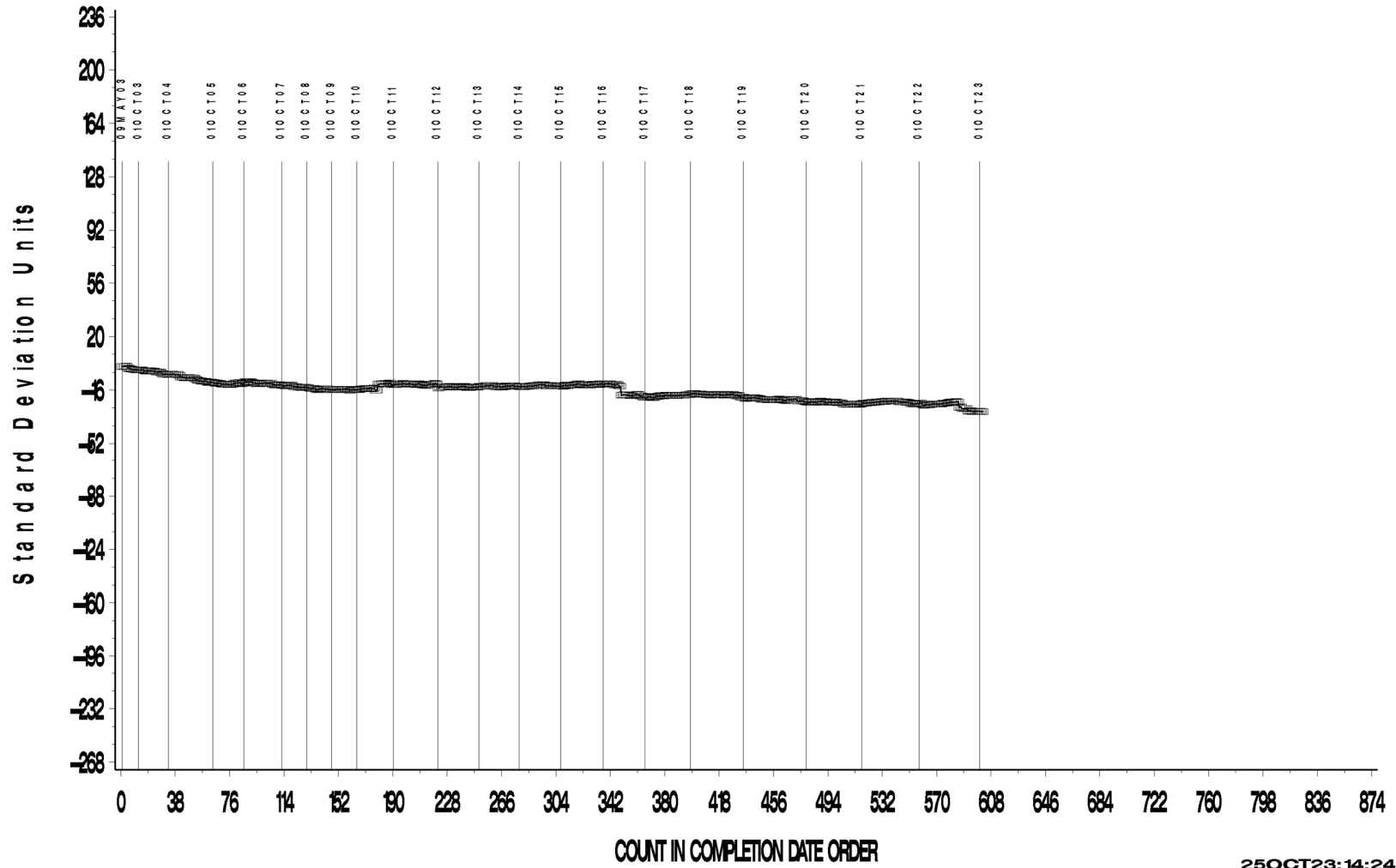
www.astmtmc.org
412-365-1000

L-37 Rater Calibration

L-37 RATER CALIBRATION INDUSTRY OPERATIONALLY VALID DAT

SPITTING

CUSUM Severity Analysis



25OCT23: 14:24



Test Monitoring Center

203 Armstrong Drive, Freeport, PA 16229, USA

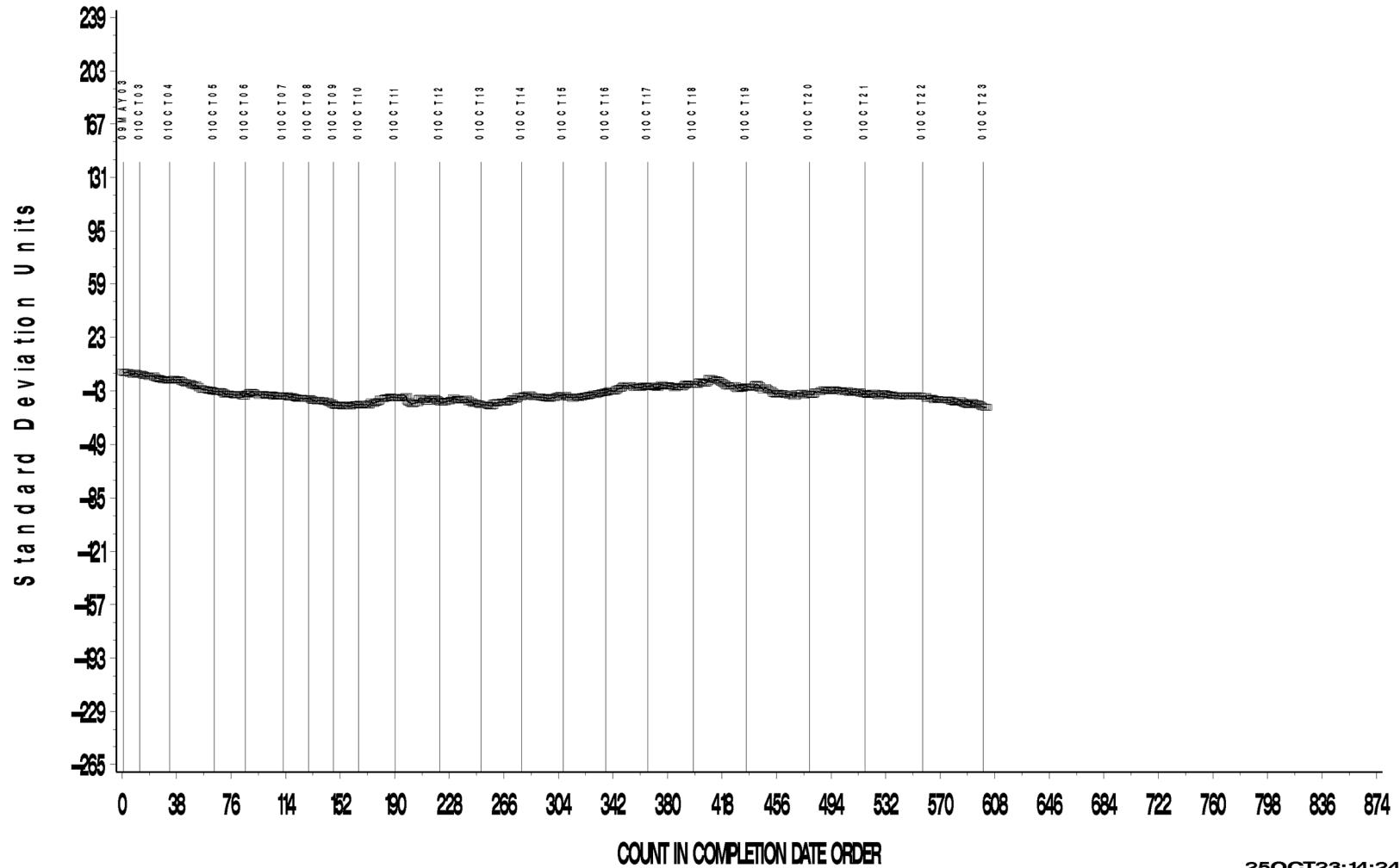
www.astmtmc.org
412-365-1000

L-37 Rater Calibration

L-37 RATER CALIBRATION INDUSTRY OPERATIONALLY VALID DATA

WEAR

CUSUM Severity Analysis



25OCT23: 14:24



Test Monitoring Center

203 Armstrong Drive, Freeport, PA 16229, USA

www.astmtmc.org
412-365-1000