



Test Monitoring Center

@ Carnegie Mellon University
6555 Penn Avenue, Pittsburgh, PA 15206, USA

<http://astmtmc.cmu.edu>
412-365-1000

MEMORANDUM: 17-036

DATE: November 2, 2017

TO: Eric Donovan, Chairman, L-42 Surveillance Panel

FROM: Dylan Beck *Dylan Beck*

SUBJECT: L-42 Rater Calibration from April 1, 2017 through September 30, 2017

Attached is a summary of L-42 rater calibration activity this period.

DJB/djb/mem17-036.djb.doc

cc: Frank Farber

Jeff Clark

Scott Parke

L-42 Surveillance Panel

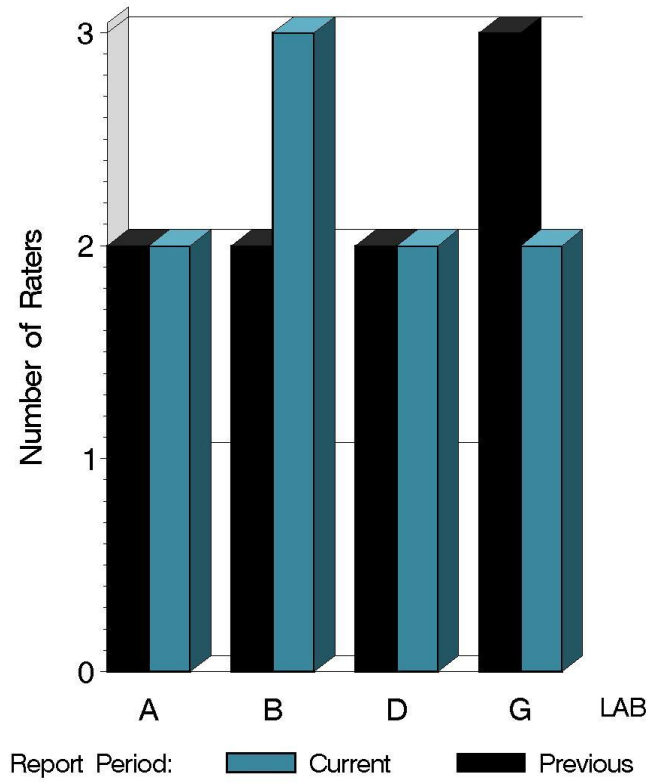
<http://www.astmtmc.cmu.edu/ftp/docs/gear/l42rc/semiannualreports/l42rc-10-2017.pdf>

Distribution: email

L-42 Rater Calibration

	Reporting Data	Calibrated on 9-30-17
Number of Labs	4	4
Number of Raters	9	9

BY-LAB RATER DISTRIBUTION



11:01:15 31OCT2017

L-42 Rater Calibration

Test Distribution by Validity

		Totals	
		Last Period	This Period
Accepted for calibration	AC	12	11
Rejected (Mild)	OC	1	0
Rejected (Severe)	OC	0	0
Rejected (Multiple)	OC	0	0
Rejected (Precision)	OC	1	0
Workshop data	AG	24	9
<hr/>			
Total		38	20

L-42 Rater Calibration

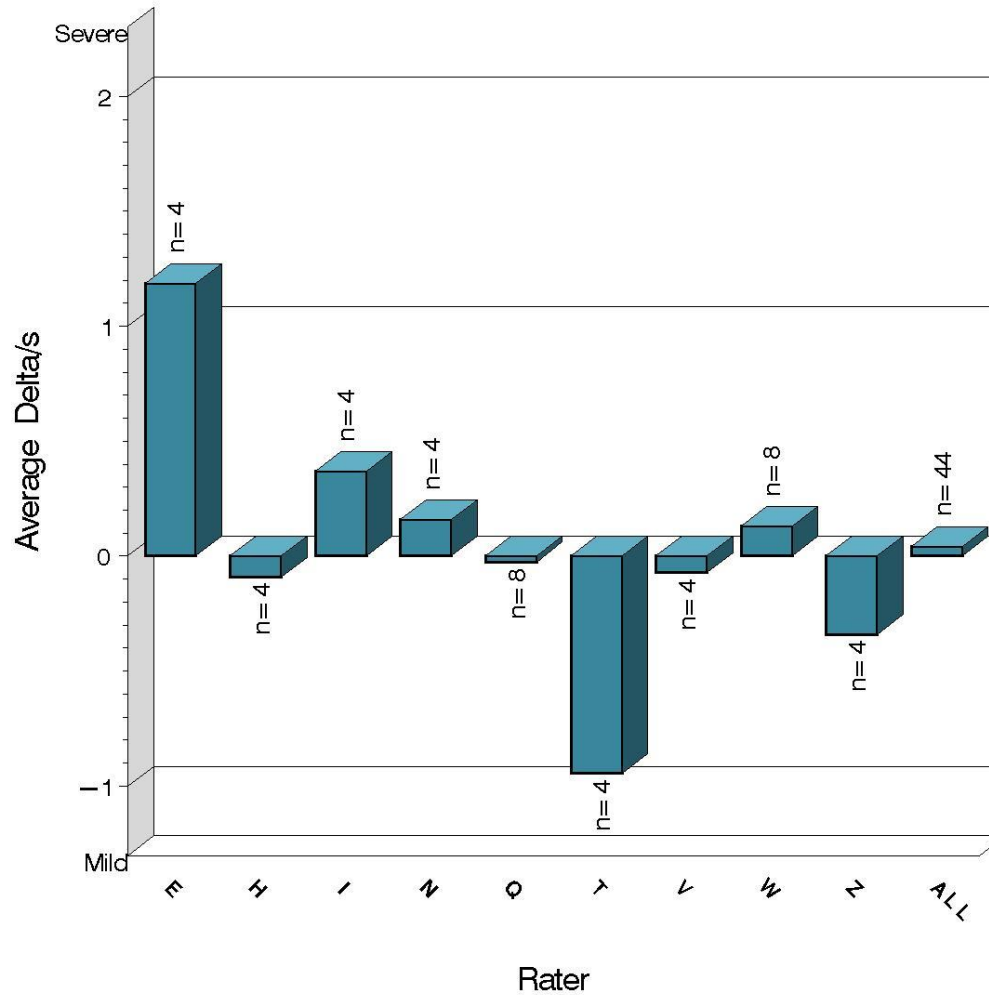
Rater	N	PSCR		RSCR	
		Avg Yi	STD*	Avg Yi	STD*
E	4	1.188	0.419	1.030	0.449
H	4	-0.092	0.197	-0.015	0.365
I	4	0.369	0.086	-0.269	0.479
N	4	0.160	0.467	-0.101	0.410
Q	8	-0.025	0.380	0.035	0.558
T	4	-0.946	0.800	-0.564	0.934
V	4	-0.073	0.865	-0.710	0.703
W	8	0.129	1.005	0.612	1.170
Z	4	-0.340	0.195	0.118	0.389
ALL	44	0.043	0.749	0.071	0.824

* Due to the small number of ratings per part, the standard deviation of the Yi values is given in place of a pooled standard deviation.

L-42 Rater Calibration

PINION SCORING

Severity as Measured by Delta/s

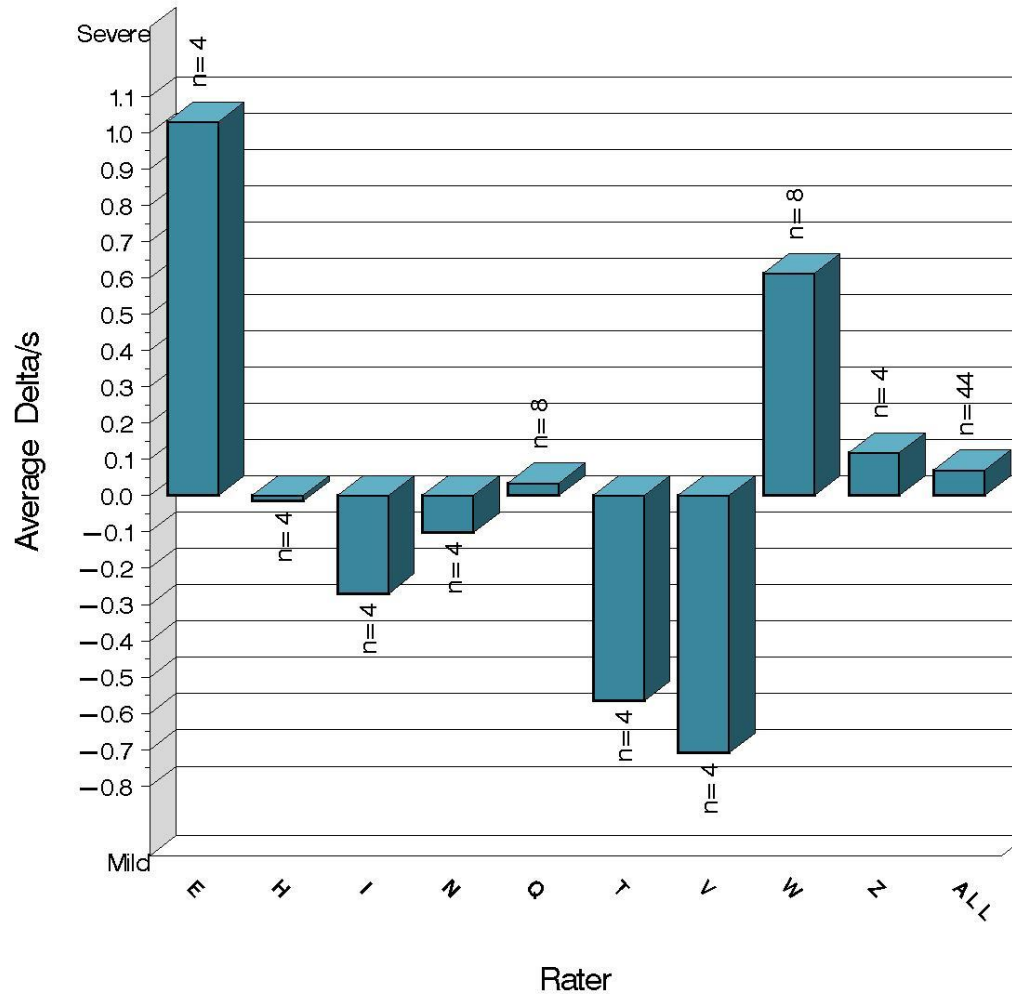


11:01:15 31OCT2017

L-42 Rater Calibration

RING SCORING

Severity as Measured by Delta/s

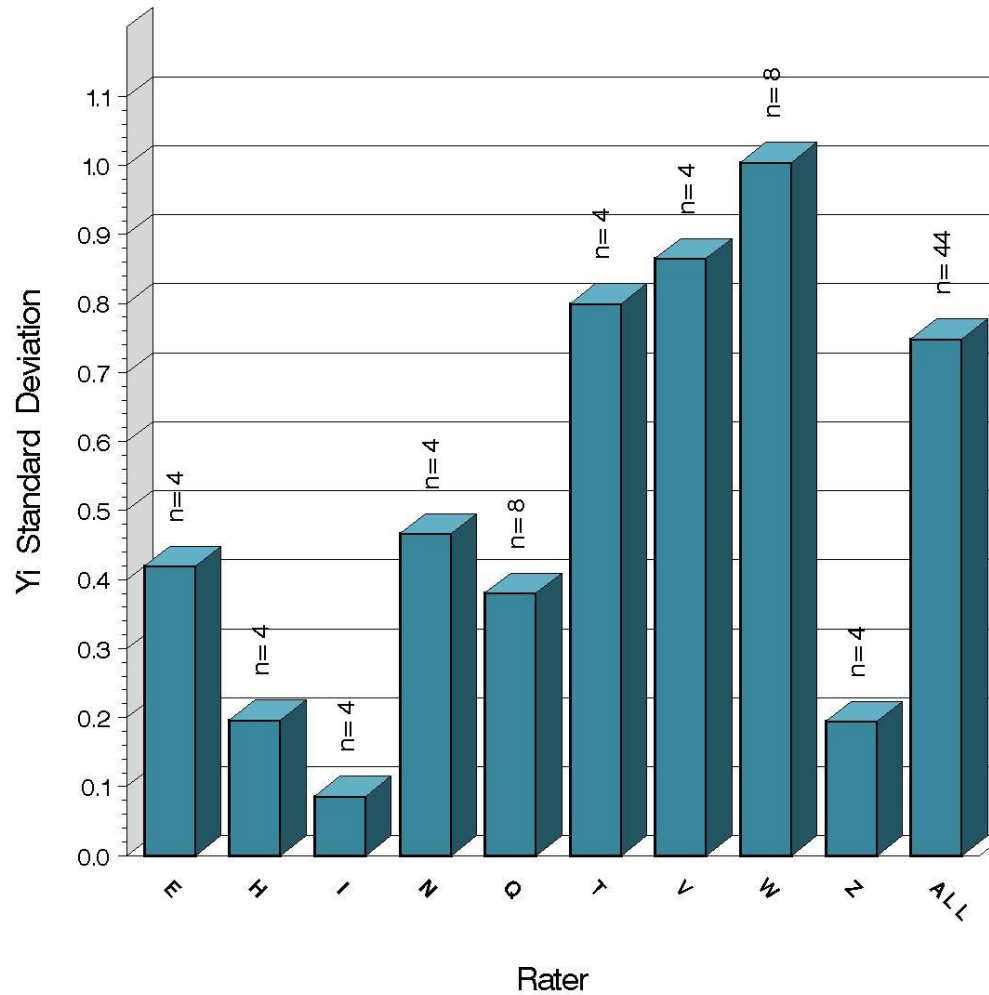


11:01:15 31OCT2017

L-42 Rater Calibration

PINION SCORING

Precision as Measured by Yi STD

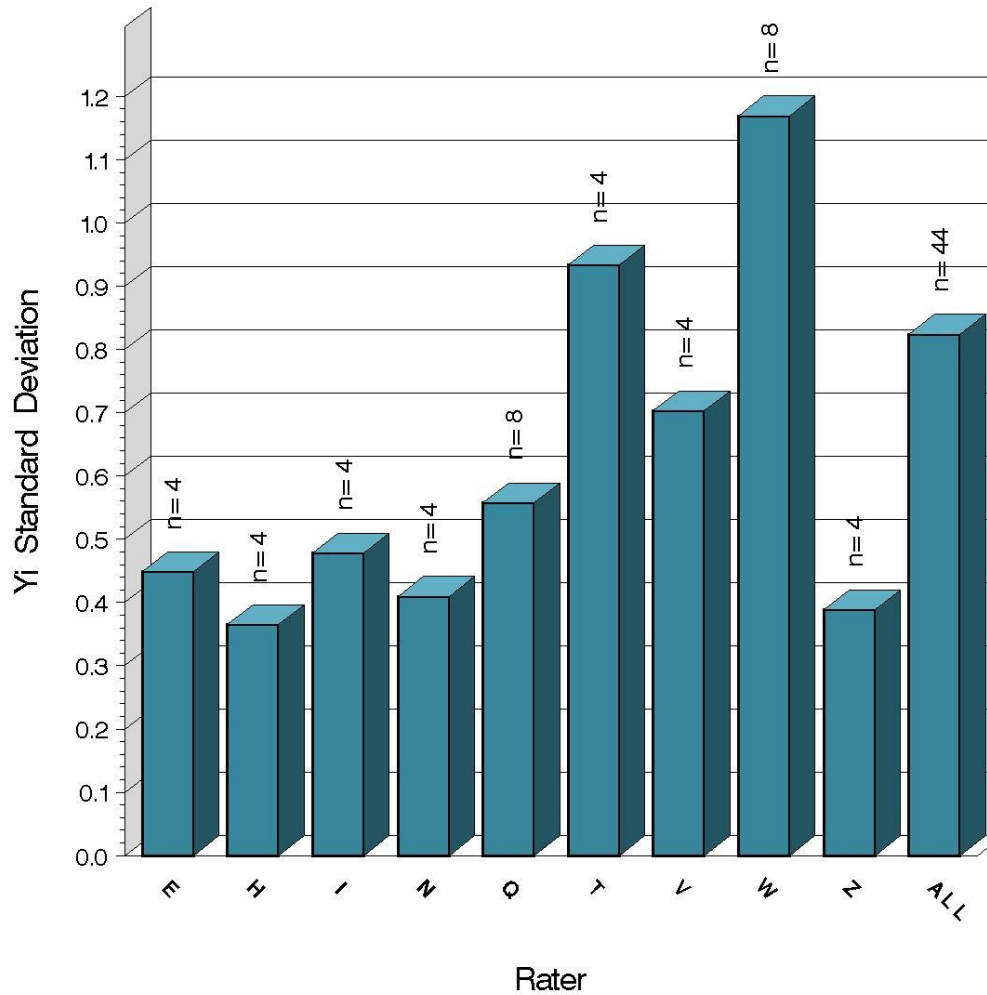


11:01:15 31OCT2017

L-42 Rater Calibration

RING SCORING

Precision as Measured by Yi STD



11:01:15 31OCT2017

L-42 Rater Calibration

SUMMARY OF SEVERITY & PRECISION

Severity
Both PSCR and RSCR remained within limits over this report period.
Precision
Precision for both parameters remained within acceptable limits.

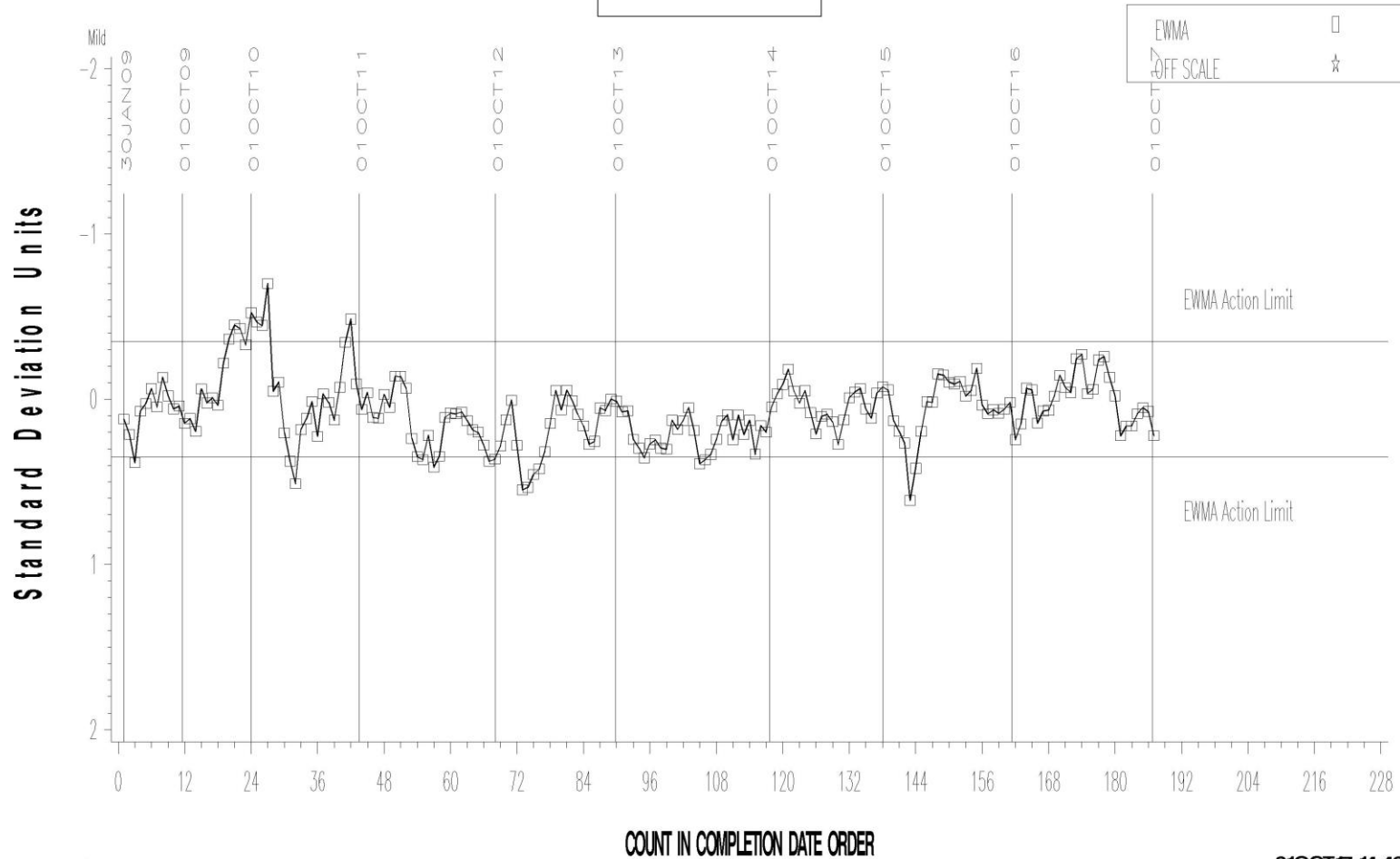
Industry control charts follow.

L-42 Rater Calibration

L-42 RATER CALIBRATION INDUSTRY OPERATIONALLY VALID DATA

PINION SCORING

LTMS Severity Analysis



Severa

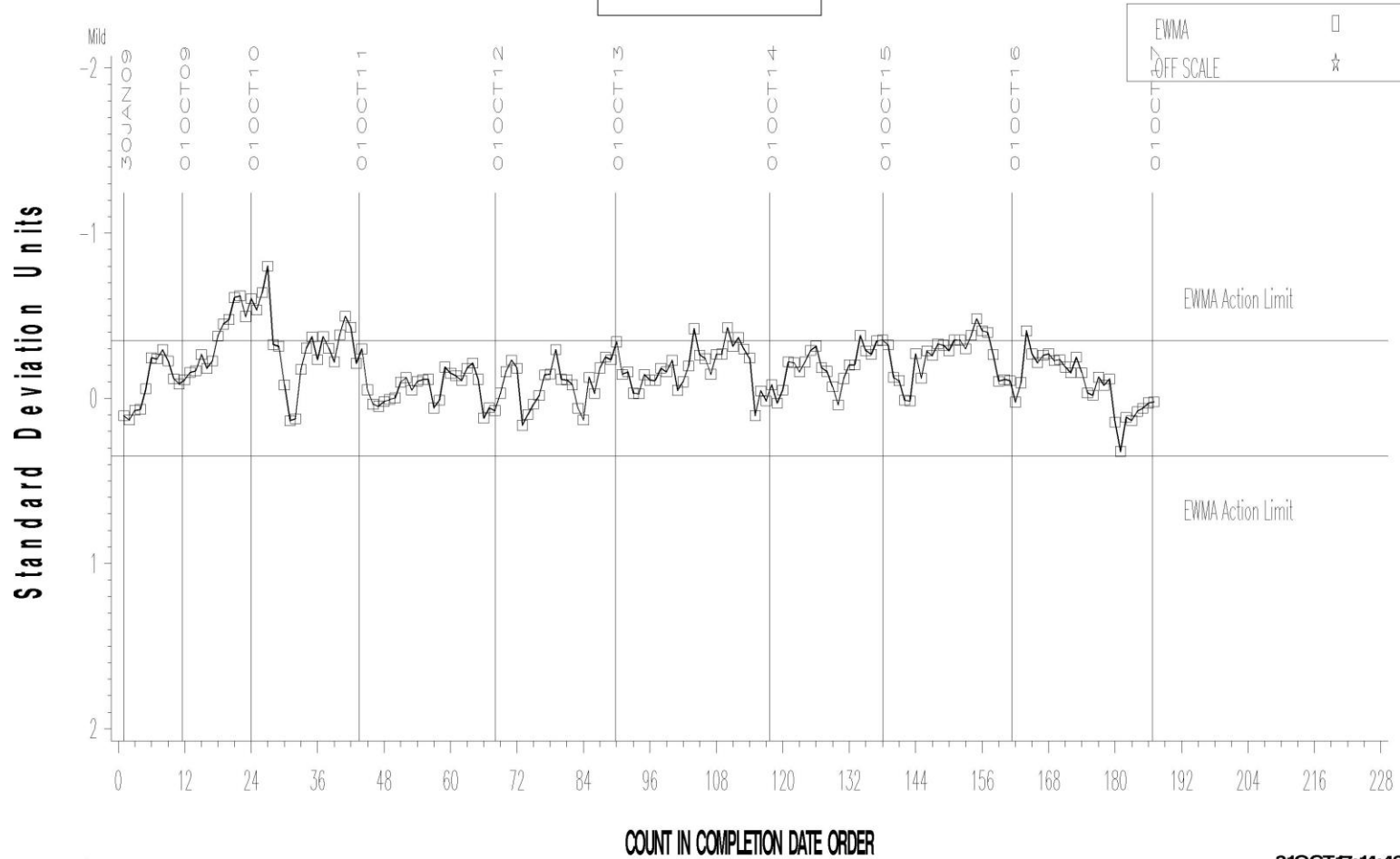
31OCT17:14:49

L-42 Rater Calibration

L-42 RATER CALIBRATION INDUSTRY OPERATIONALLY VALID DATA

RING SCORING

LTMS Severity Analysis



Severa

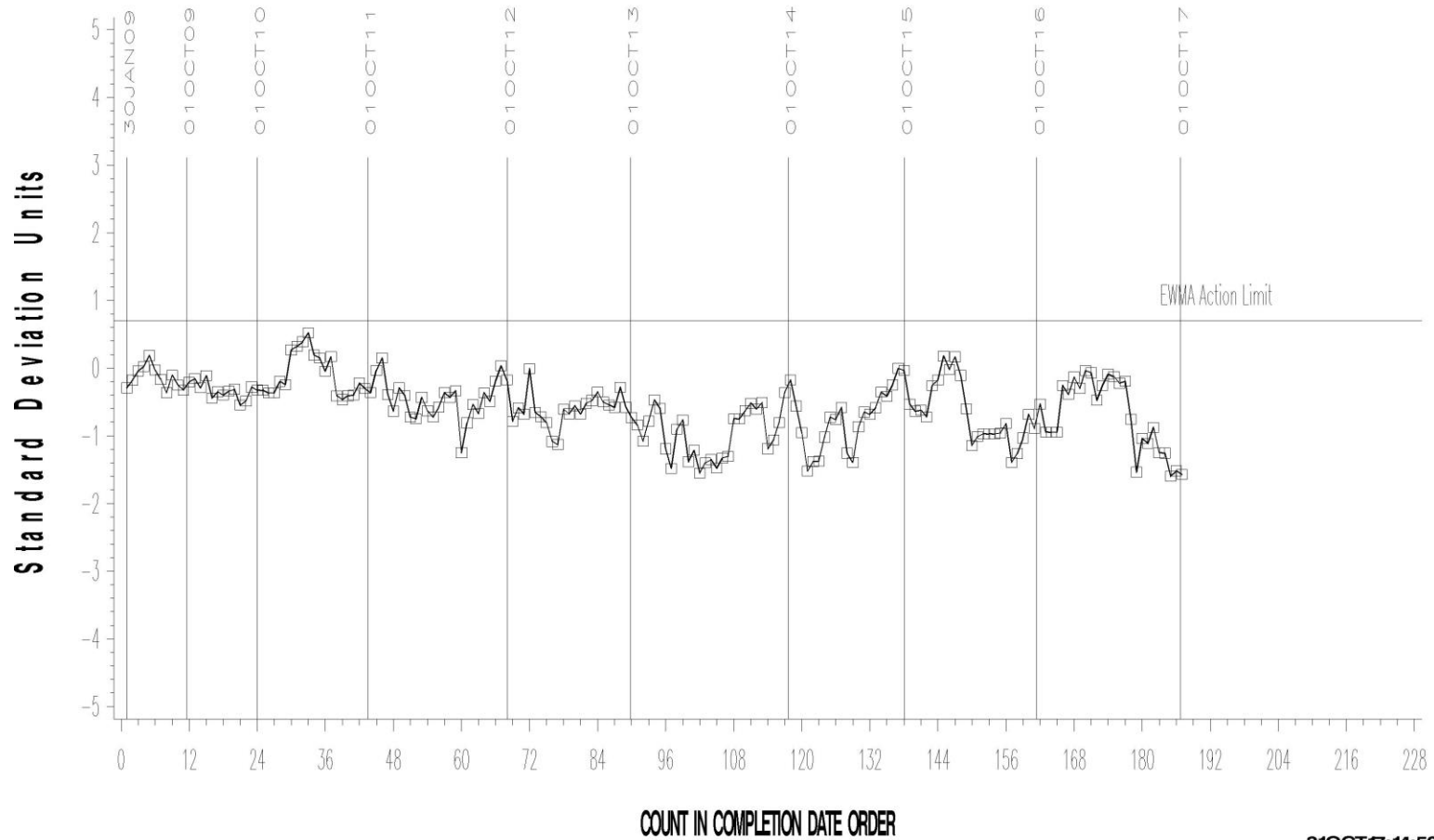
31OCT17:14:49

L-42 Rater Calibration

L-42 RATER CALIBRATION INDUSTRY OPERATIONALLY VALID DATA

PINION SCORING

LTMS Precision Analysis



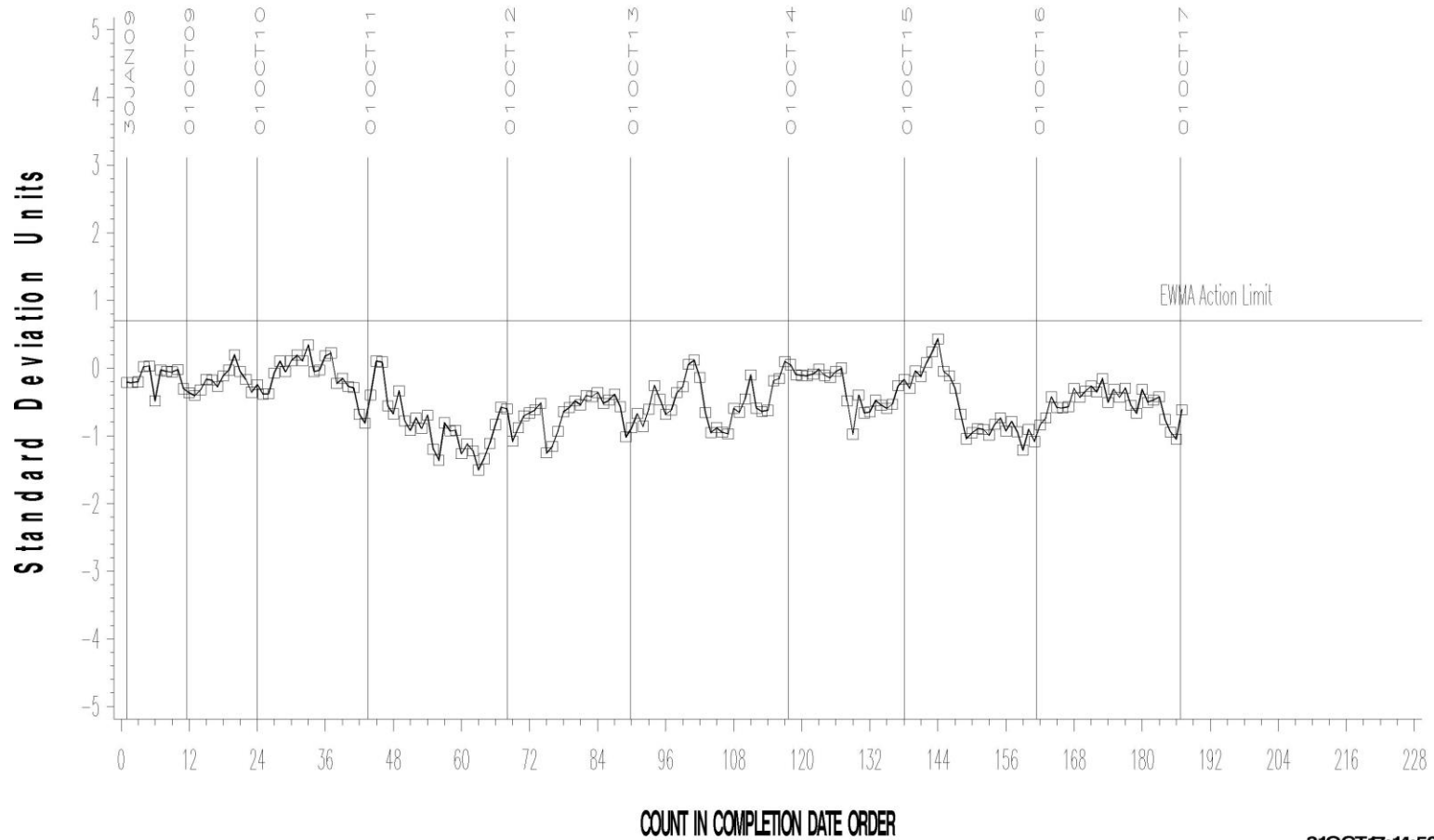
31OCT17:14:50

L-42 Rater Calibration

L-42 RATER CALIBRATION INDUSTRY OPERATIONALLY VALID DATA

RING SCORING

LTMS Precision Analysis



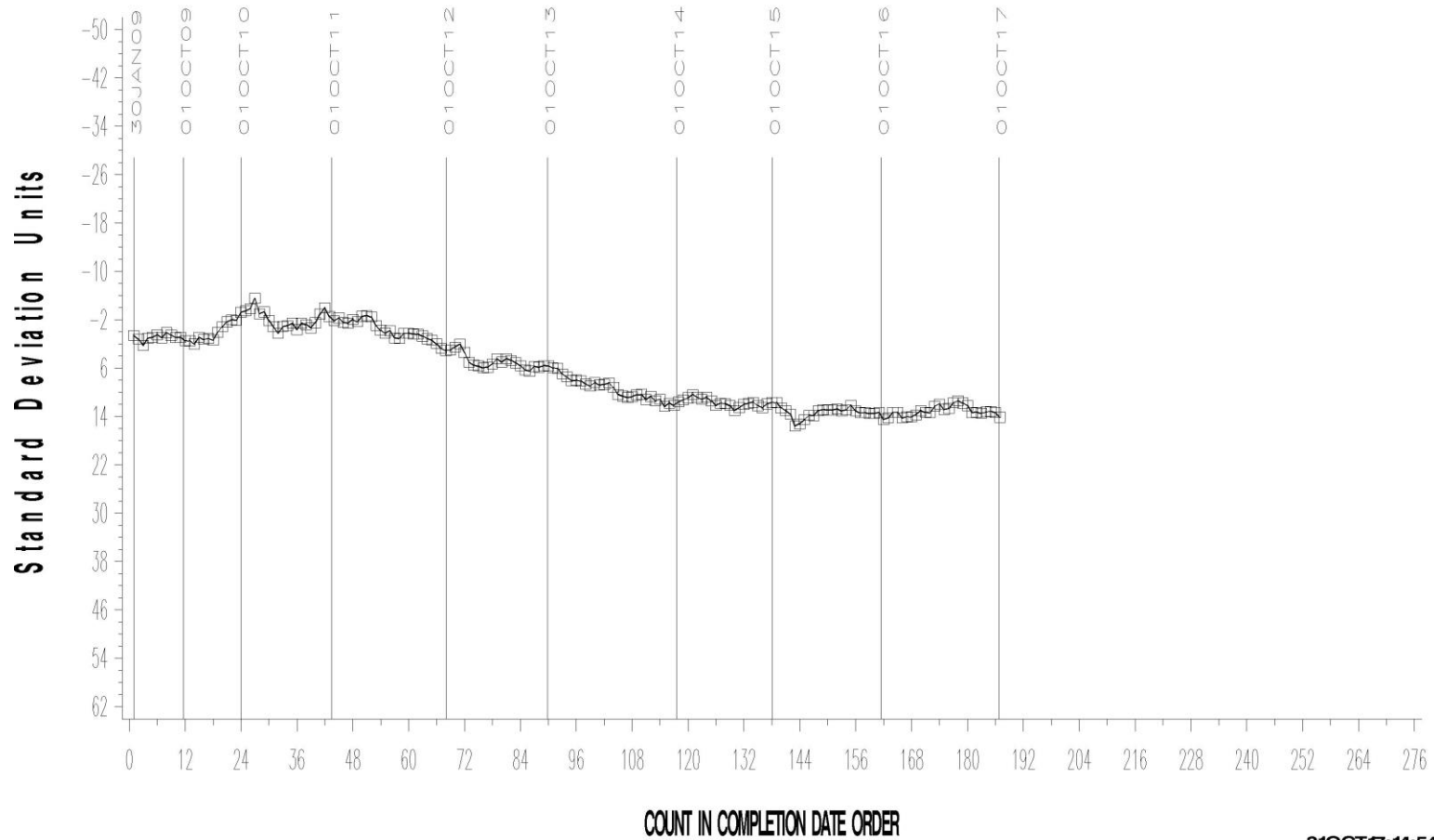
31OCT17:14:50

L-42 Rater Calibration

L-42 RATER CALIBRATION INDUSTRY OPERATIONALLY VALID DATA

PINION SCORING

CUSUM Severity Analysis



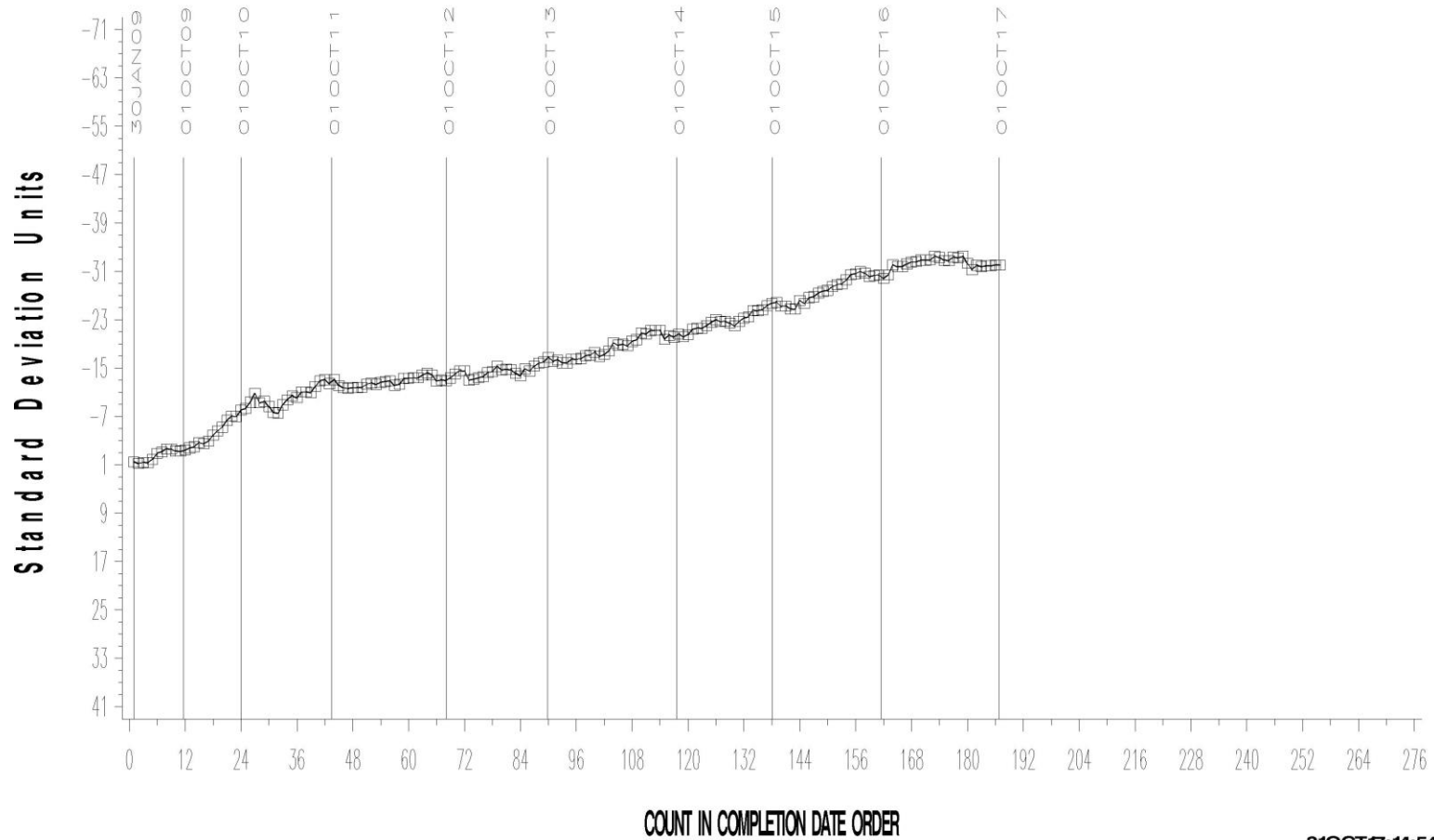
31OCT17:14:54

L-42 Rater Calibration

L-42 RATER CALIBRATION INDUSTRY OPERATIONALLY VALID DATA

RING SCORING

CUSUM Severity Analysis



31OCT17:14:54