



## Test Monitoring Center

203 Armstrong Drive, Freeport, PA 16229, USA

www.astmtmc.org  
412-365-1000

L-42 Information Letter 23-1  
Sequence Number 38  
November 20, 2023

***ASTM consensus has not been obtained on this information letter. An appropriate ASTM ballot will be issued in order to achieve such consensus.***

TO : L-42 Surveillance Panel

SUBJECT: Figures A6.11-A6.16

The L-42 Surveillance Panel approved edits to figures A6.11-A6.16 of the test method at their November 8<sup>th</sup>, 2023 meeting. The edits will remove test specifications appearing on the figures that include setpoints and limits that exist elsewhere in the method. Historically these figures have not been updated with specification changes made elsewhere in the test method and some are currently inaccurate. To avoid this issue in the future, the panel decided to remove the specifications appearing on the figures entirely. All figures are referenced in the text of the procedure where the specifications will remain.

Matt Sangpeal  
Chairman  
L-42 Surveillance Panel

Jeffrey Clark  
Executive Director  
ASTM Test Monitoring Center

Attachment

cc: [https://www.astmtmc.org/docs/gear/l42/procedure\\_and\\_ils/il23-1.pdf](https://www.astmtmc.org/docs/gear/l42/procedure_and_ils/il23-1.pdf)

Distribution: Email



A Program of ASTM International

# Test Monitoring Center

203 Armstrong Drive, Freeport, PA 16229, USA

www.astmtmc.org  
412-365-1000

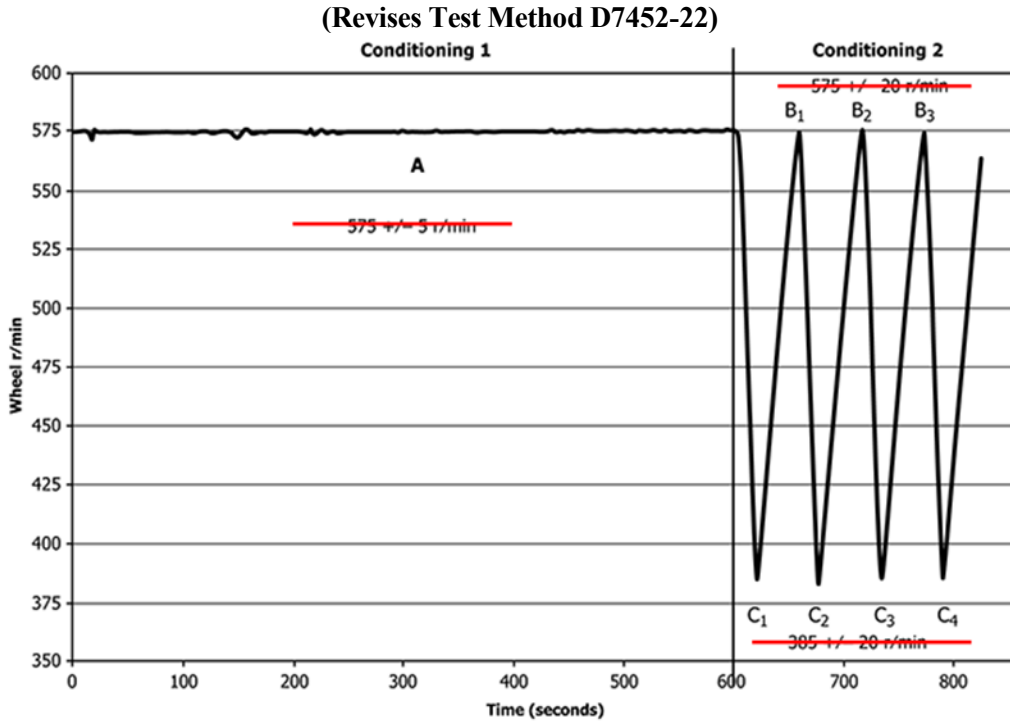


FIG. A6.11 Conditioning 1 & 2—Wheel Speed

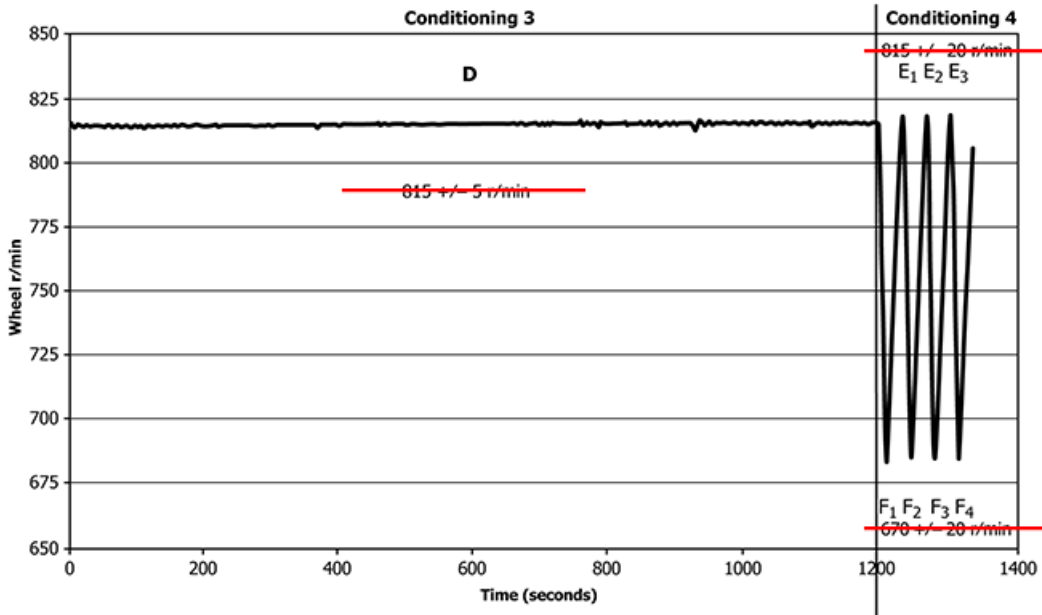


FIG. A6.12 Conditioning 3 & 4—Wheel Speed



A Program of ASTM International

# Test Monitoring Center

203 Armstrong Drive, Freeport, PA 16229, USA

www.astmtmc.org  
412-365-1000

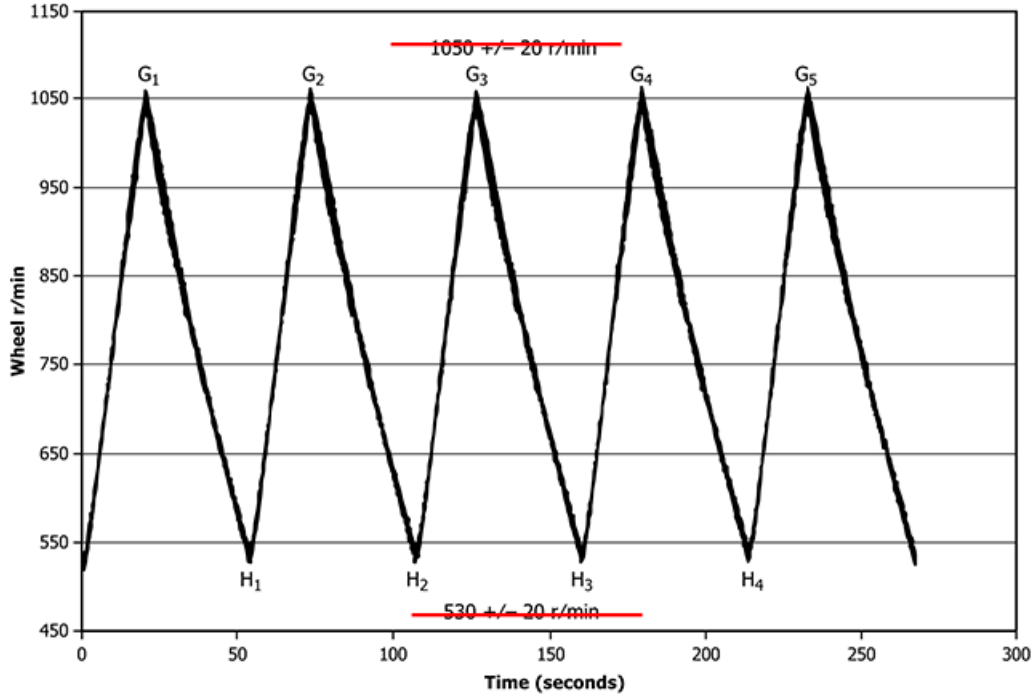


FIG. A6.13 Shock Series One—Wheel Speed (5 Shocks)

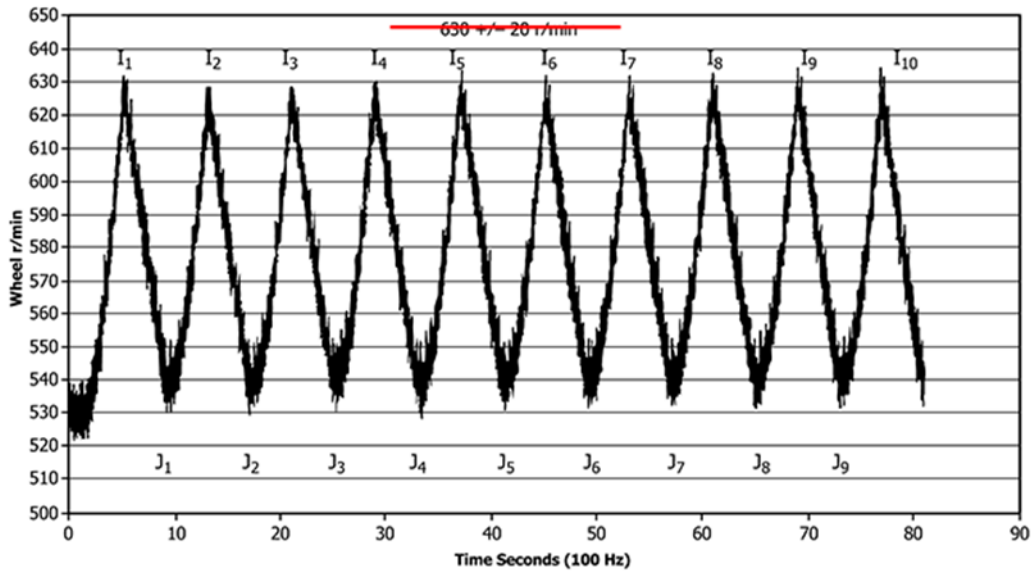


FIG. A6.14 Shock Series Two—Wheel Speed (10 Shocks)



A Program of ASTM International

# Test Monitoring Center

203 Armstrong Drive, Freeport, PA 16229, USA

www.astmtmc.org  
412-365-1000

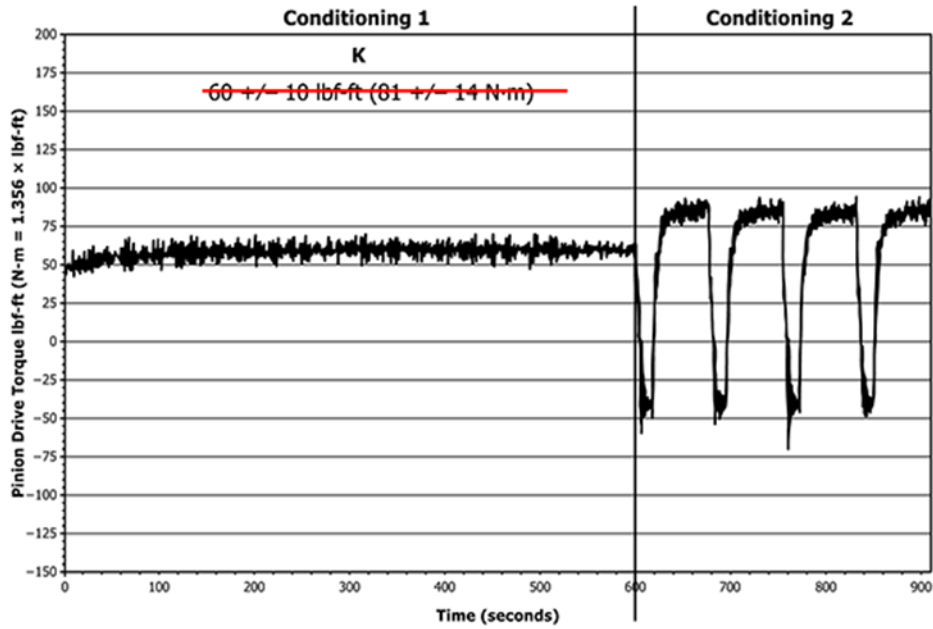


FIG. A6.15 Conditioning 1 & 2—Pinion Torque

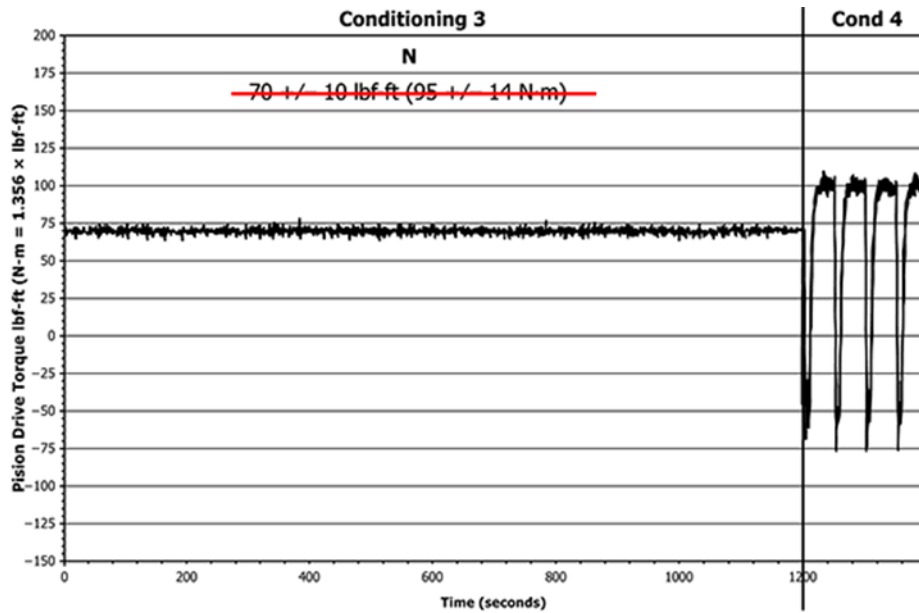


FIG. A6.16 Conditioning 3 & 4—Pinion Torque