



Test Monitoring Center

@ Carnegie Mellon University
6555 Penn Avenue, Pittsburgh, PA 15206, USA

<http://astmtmc.cmu.edu>
412-365-1000

L-42 Information Letter 19-1
Sequence Number 36
February 20, 2019

ASTM consensus has not been obtained on this information letter. An appropriate ASTM ballot will be issued in order to achieve such consensus.

TO: L-42 Surveillance Panel

SUBJECT: 1. Clarification of stand referencing procedure added to section 9.6.1
2. Figure A6.2 modified to better define the location of the axle cooling spray nozzles

The L-42 Surveillance Panel approved the following changes at their February 13th, 2019 meeting. Clarification was added to section 9.6.1 to include the addition of a discrimination oil run to the calibration requirements if any of the special circumstances listed within the section occur. In addition, the graphic in figure A6.2 has been updated to further distinguish the location of the axle cooling spray nozzle.

The revisions to Test Method D7452 are attached. These changes are effective February 13, 2019.

Eric Donovan
Chairman
L-42 Surveillance Panel

Frank Farber
Director
ASTM Test Monitoring Center

Attachment

cc: http://www.astmtmc.cmu.edu/docs/gear/142/procedure_and_ils/il19-1.pdf

Distribution: Email

(Revises Test Method D7452-17)

Replace section 9.6.1 with the following:

9.6.1 Also, if any of the special circumstances described below are involved, calibrate with a new **four** reference oil test calibration sequence **including a new discrimination oil run**:

9.6.1.1 After a test stand is moved, or

9.6.1.2 After changing axle batches, or

9.6.1.3 After changing throttle settings, or

9.6.1.4 After changing torque settings, or

9.6.1.5 After major computer changes, or

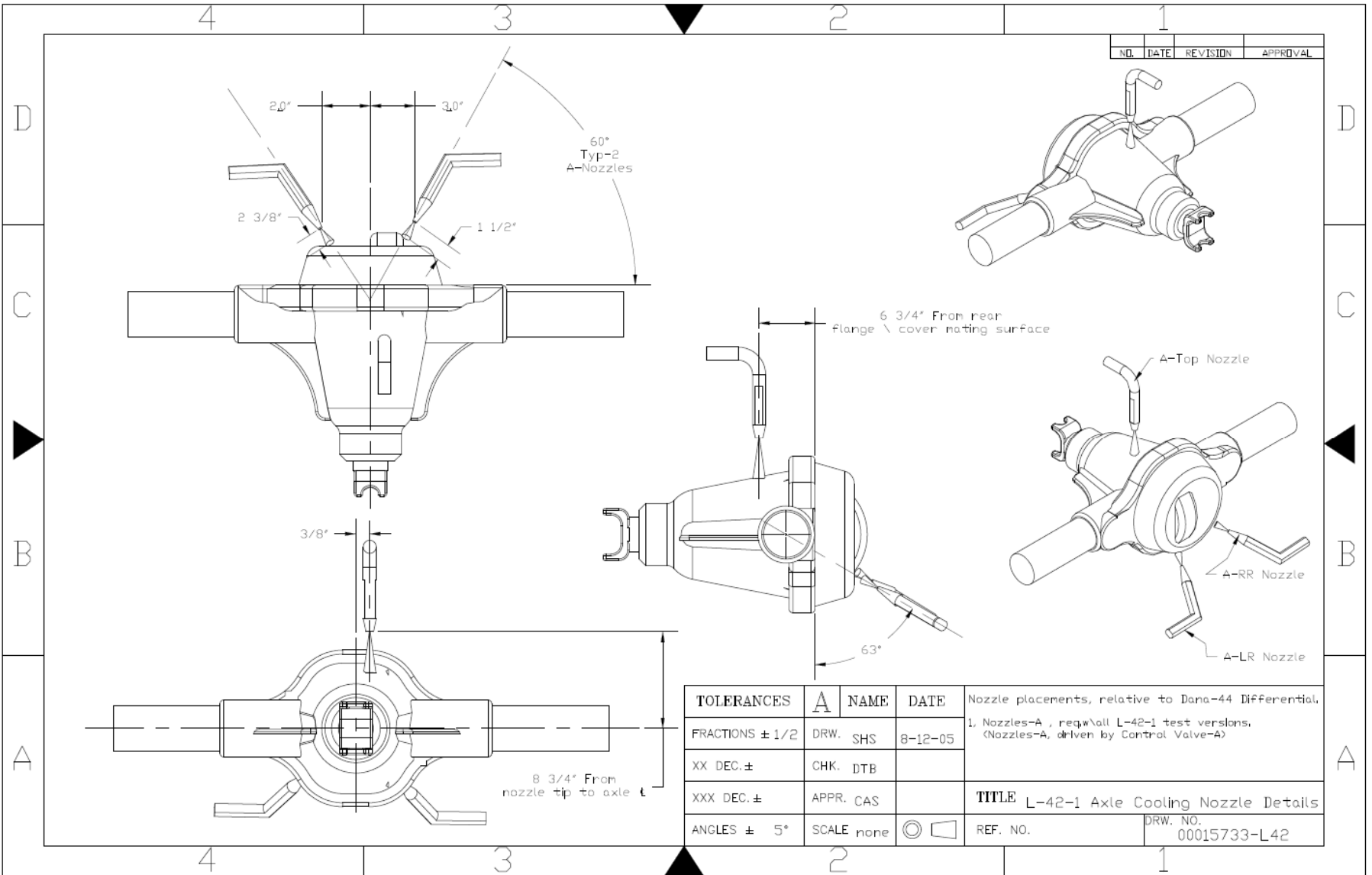
9.6.1.6 After a test not conforming to this test method was run in the stand since the last acceptable reference test,

or

9.6.1.7 After 6 months since the last valid L42 calibration test, or

9.6.1.8 After two reference oil calibration attempts are made resulting in the end-of-test pinion coast side scoring not meeting the Shewhart limits as published by the Test Monitoring Center, or the tests are statistically unacceptable or operationally invalid.

Replace the graphic used in A6.2 with the one below.



NO.	DATE	REVISION	APPROVAL

TOLERANCES	A	NAME	DATE	Nozzle placements, relative to Dana-44 Differential. 1, Nozzles-A, req'd all L-42-1 test versions. (Nozzles-A, driven by Control Valve-A)
FRACTIONS ± 1/2	DRW.	SHS	8-12-05	
XX DEC. ±	CHK.	DTB		
XXX DEC. ±	APPR.	CAS		TITLE L-42-1 Axle Cooling Nozzle Details
ANGLES ± 5°	SCALE	none	REF. NO.	DRW. NO. 00015733-L42