



Test Monitoring Center


@ Carnegie Mellon University
6555 Penn Avenue, Pittsburgh, PA 15206, USA

<http://astmtmc.cmu.edu>
412-365-1000

MEMORANDUM: 13-036

DATE: May 23, 2013

TO: L-42 Surveillance Panel

FROM: Scott Parke 

SUBJECT: Impact depressions found in pre-test inspection of some C1L680/P8T025A hardware

This memorandum is being sent to publicize and document a minor pinion gear defect referred to as “impact depression” and described during the May 15, 2013 L-42 surveillance panel meeting. Please refer to the photograph on the following page.

With the C1L680/P8T025A hardware batch, it has been observed that in some cases, contact appears to have been made between the ring gear and pinion during factory assembly. For some pieces, the contact has been sufficient to cause what is being referred to as an “impact depression” on the drive side of one of the pinion teeth. Small chips or deformations may also be present on the top land edges of the teeth surrounding the tooth face with the impact depression.

As this condition does not affect the coast side of the pinion, it is not considered by the surveillance panel to alter the acceptability of such pieces of hardware for use in testing.

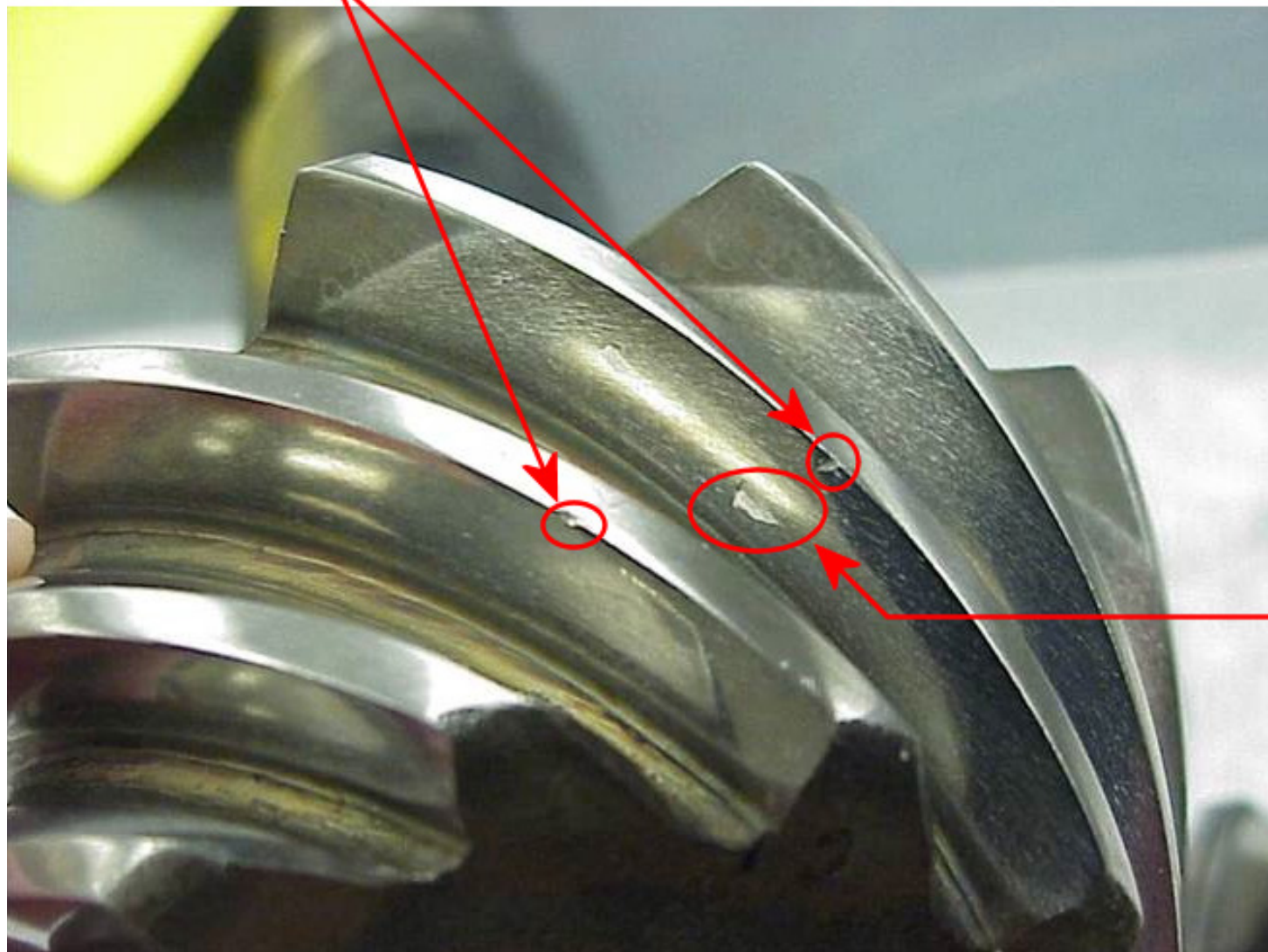
SDP/sdp/mem13-036.sdp.doc

cc: Frank Farber
Jeff Clark
Don Lind

<ftp://ftp.astmtmc.cmu.edu/docs/gear/l42/memos/mem13-036.sdp.pdf>

Distribution: email

**Top land
edge chips**



**Impact
depression**