




Test Monitoring Center

@ Carnegie Mellon University
6555 Penn Avenue, Pittsburgh, PA 15206, USA

<http://astmtmc.cmu.edu>
412-365-1000

MEMORANDUM: 15-037
DATE: November 13, 2015
TO: Angela Trader, Chairman, L-33-1 Surveillance Panel
FROM: Scott Parke 
SUBJECT: L-33-1 Testing from April 1, 2015 through September 30, 2015

Please find attached a summary of testing activity this period.

SDP/sdp/mem15-037.sdp.doc

cc: Frank Farber

Jeff Clark

L-33-1 Surveillance Panel

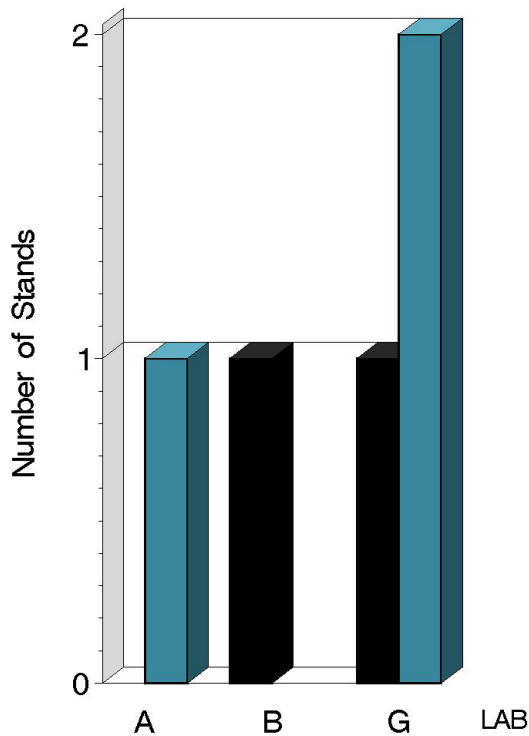
<ftp://ftp.astmtmc.cmu.edu/docs/gear/l331/semiannualreports/l331-10-2015.pdf>

Distribution: email

L-33-1 (D7038)

	Reporting Data	Calibrated on 9-30-15
Number of Labs	2	2
Number of Stands	3	2

BY-LAB STAND
DISTRIBUTION



Report Period: ■ Current ■ Previous

14:48:16 14OCT2015

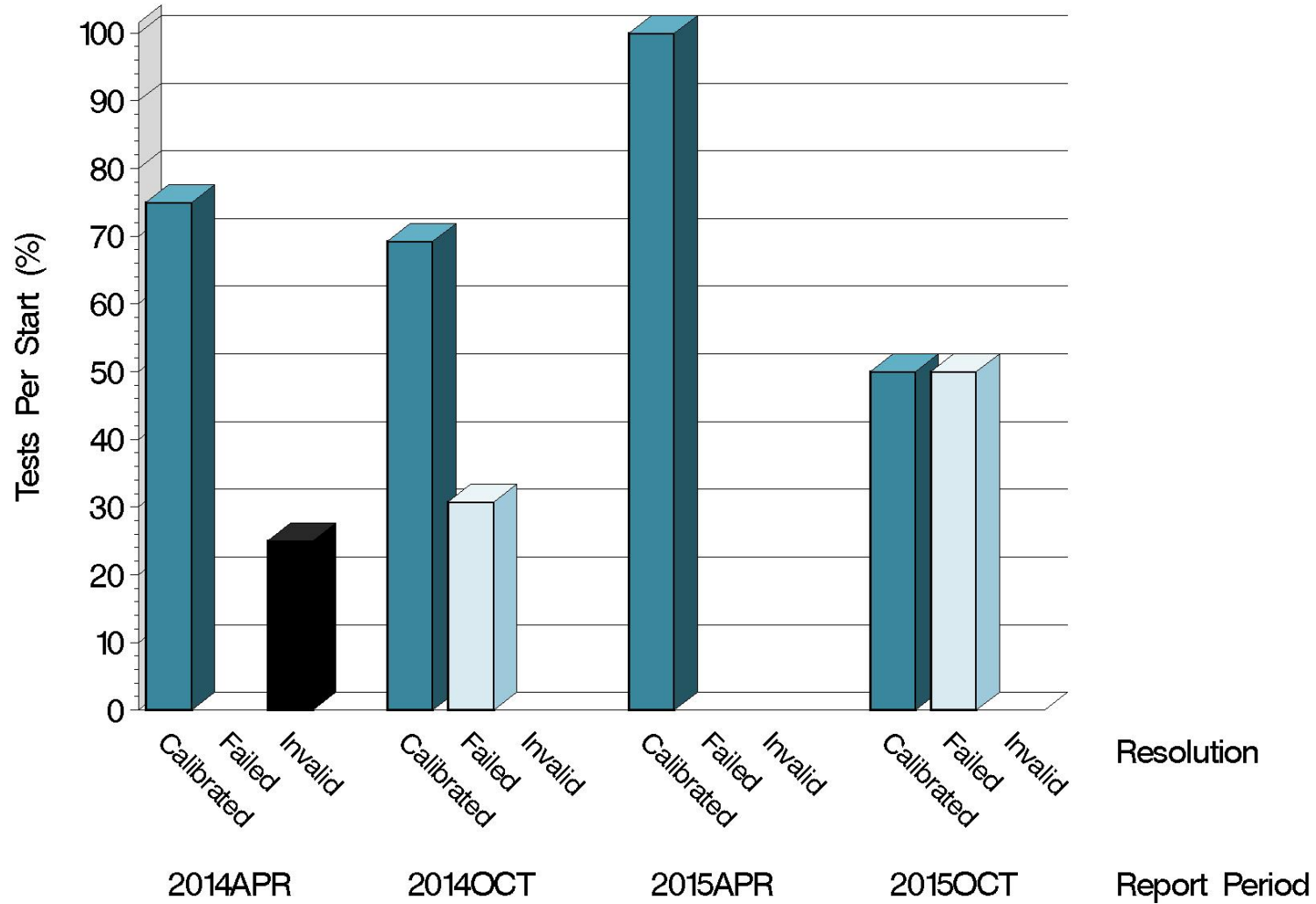
L-33-1 (D7038)

Test Distribution by Oil and Validity

					Totals	
					Last Period	This Period
		123-2	155	155-1		
Accepted for calibration	AC	0	0	1	2	1
Rejected (Mild)	OC	0	0	0	0	0
Rejected (Severe)	OC	0	0	1	0	1
Rejected (Precision)	OC	0	0	0	0	0
Invalidated calibration	LC	0	0	0	0	0
Aborted	XC	0	0	0	0	0
Accepted information run	NI	6	0	4	0	10
Total		6	0	6	2	12

L-33-1 (D7038)

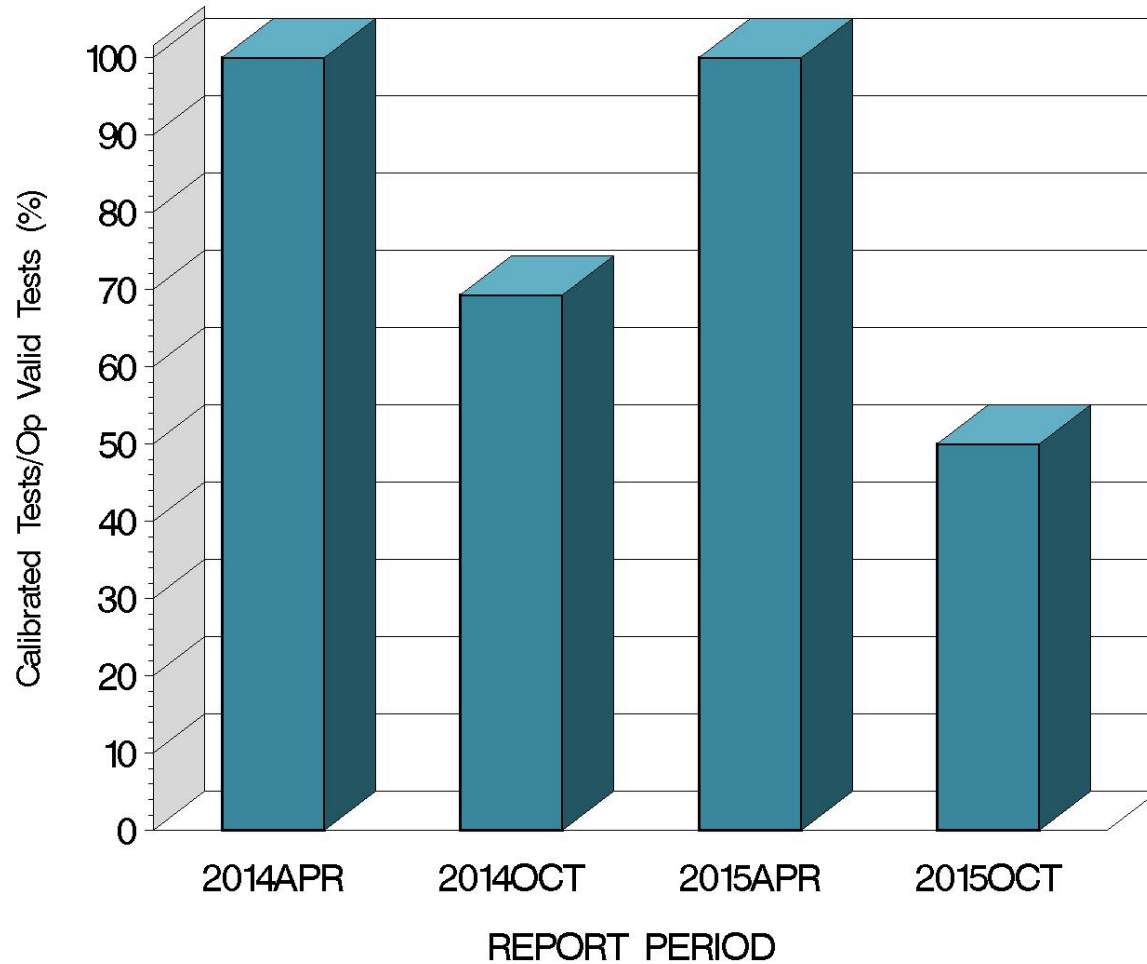
CALIBRATION ATTEMPT SUMMARY



14:48:16 14OCT2015

L-33-1 (D7038)

OPERATIONALLY VALID TESTS
MEETING ACCEPTANCE CRITERIA



14:48:16 14OCT2015

L-33-1 (D7038)

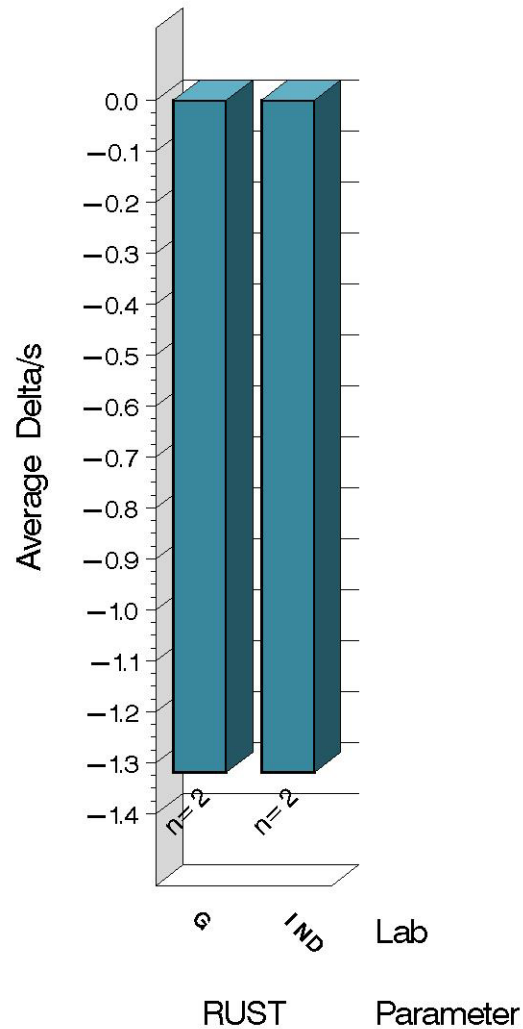
CAUSES FOR LOST TESTS

		Oil			Validity			Loss Rate		
Lab	Cause	123-2	155	155-1	RC	LC	XC	Lost	Starts	%
	No tests were lost this period.							0	12	0%
	Lost	0	0	0	0	0	0			
	Starts	6	0	6	12	12	12			
	%	0%	0%	0%	0%	0%	0%			

L-33-1 (D7038)

TEST SEVERITY

DELTA/S BY LAB

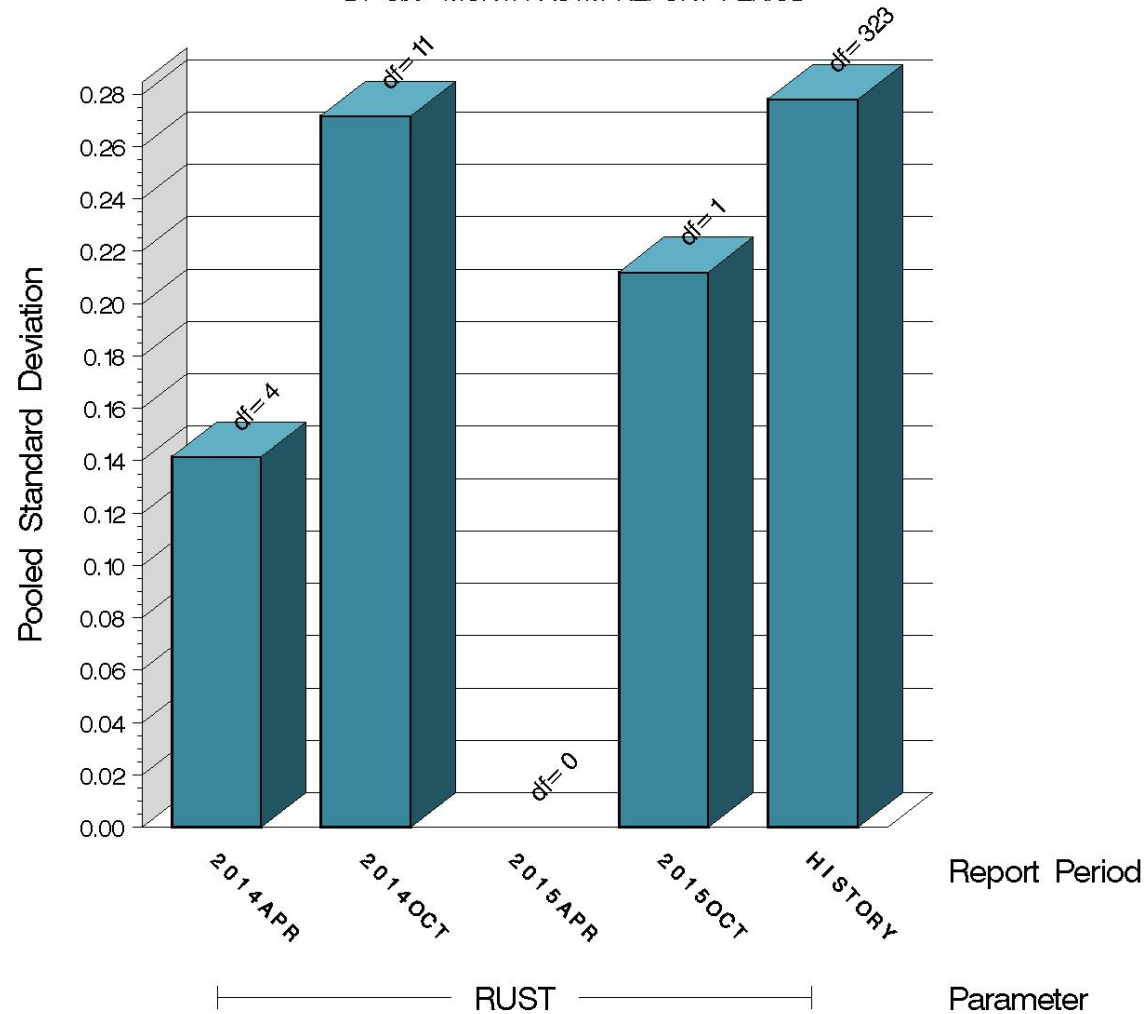


Average Δ/s by Lab		
Lab	n	RUST
G	2	-1.320
Industry	2	-1.320
Shift	2	-0.330

L-33-1 (D7038)

TEST PRECISION

POOLED STANDARD DEVIATION
BY SIX-MONTH ASTM REPORT PERIOD



14:48:16 14OCT2015

L-33-1 (D7038)

SUMMARY OF SEVERITY & PRECISION

Severity

Average RUST Δ/s this period was -0.330. Using the target standard deviation for oil 155 (0.250), this equates to 0.08 merits severe.

Precision

Precision remained within-limits throughout the period.

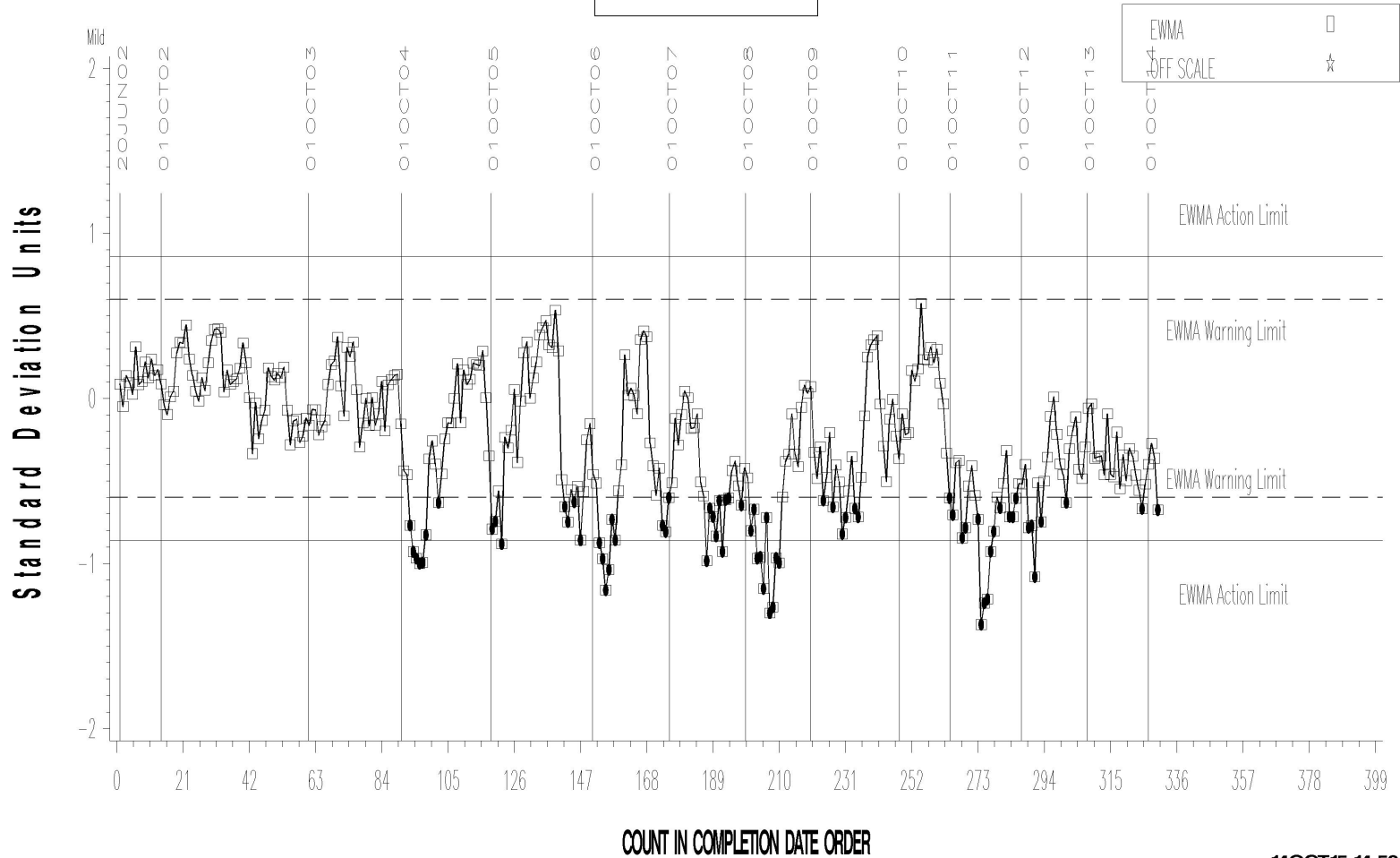
Industry control charts follow.

L-33-1 (D7038)

L-33-1 INDUSTRY OPERATIONALLY VALID DATA

FINAL RUST RESULT

LTMS Severity Analysis



Severe

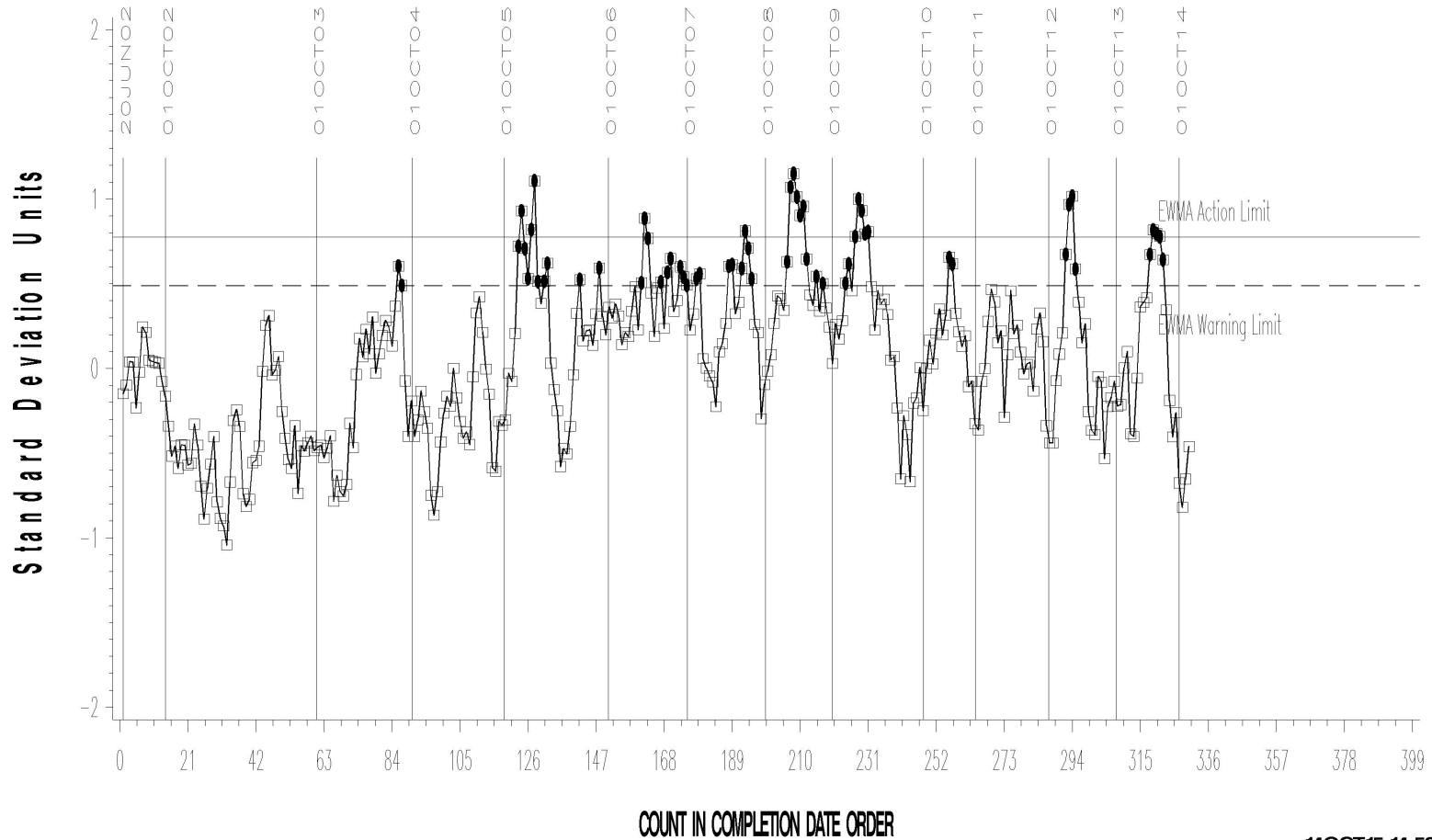
L-33-1 (D7038)

L-33-1 INDUSTRY OPERATIONALLY VALID DATA



FINAL RUST RESULT

LTMS Precision Analysis



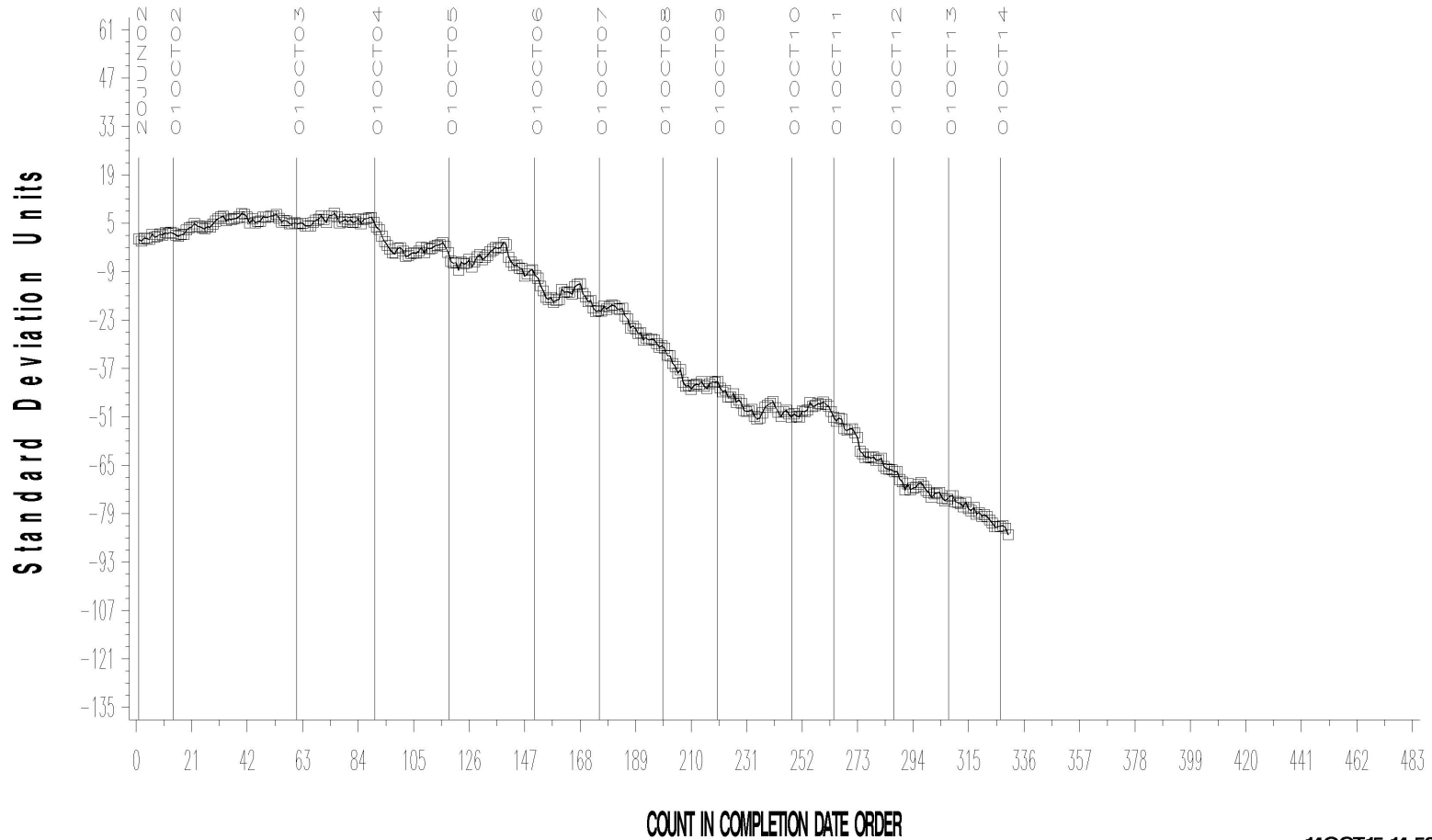
14OCT15:14:52

L-33-1 (D7038)

L-33-1 INDUSTRY OPERATIONALLY VALID DATA

FINAL RUST RESULT

CUSUM Severity Analysis



14OCT15:14:52

L-33-1 (D7038)

TIMELINE ADDITIONS

Effective Date	Information Letter	Event
		There were no timeline additions.

L-33-1 (D7038)

LAB VISITS

No L-33-1 lab visits were conducted during this period.

INFORMATION LETTERS

No information letters were issued this period.

L-33-1 (D7038)

STATUS OF REFERENCE OIL SUPPLY

Oil	Cans @ Labs	@ TMC	
		Cans	Gallons
123-2	12	136	136.8
155	0	15	15.0
155-1	11	242	242.8
Total	23	393	394.6

The TMC quantity remaining presumes usage only for L-33-1 testing. Oil 155/155-1 is also used in other test areas (L-37, L-37-1, L-60-1, and HTCT).