




Test Monitoring Center

@ Carnegie Mellon University
6555 Penn Avenue, Pittsburgh, PA 15206, USA

<http://astmtmc.cmu.edu>
412-365-1000

MEMORANDUM: 13-051
DATE: October 4, 2013
TO: Dale Smith, Chairman, L-33-1 Surveillance Panel
FROM: Scott Parke 
SUBJECT: L-33-1 Testing from April 1, 2013 through September 30, 2013

Please find attached a summary of testing activity this period.

SDP/sdp/mem13-051.sdp.doc

cc: Frank Farber

Jeff Clark

L-33-1 Surveillance Panel

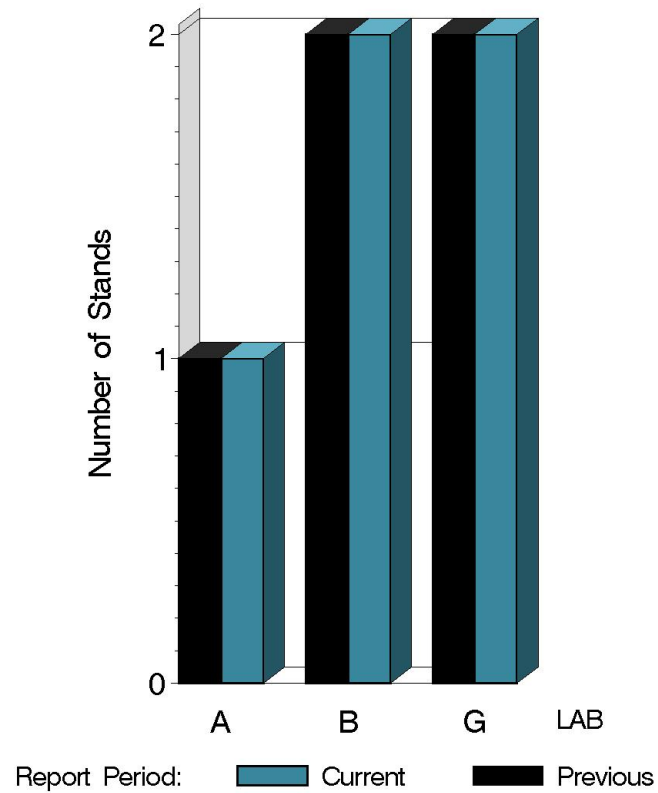
<ftp://ftp.astmtmc.cmu.edu/docs/gear/l331/semiannualreports/l331-10-2013.pdf>

Distribution: email

L-33-1 (D7038)

	Reporting Data	Calibrated on 9-30-13
Number of Labs	3	3
Number of Stands	5	3

BY-LAB STAND
DISTRIBUTION



10:32:40 03OCT2013

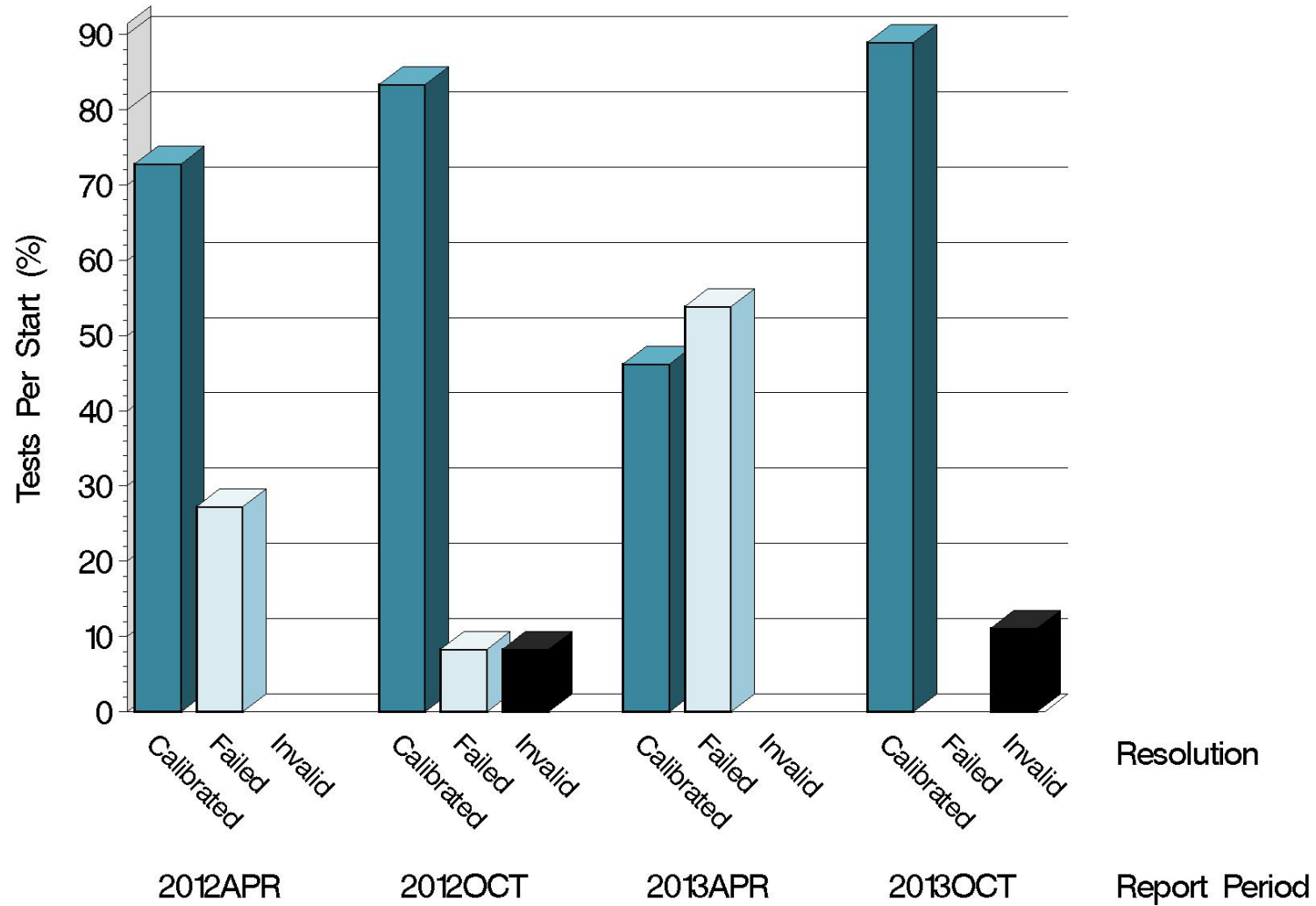
L-33-1 (D7038)

Test Distribution by Oil and Validity

					Totals	
		123-2	155	155-1	Last Period	This Period
Accepted for calibration	AC	5	1	2	6	8
Rejected (Mild)	OC	0	0	0	0	0
Rejected (Severe)	OC	0	0	0	0	0
Rejected (Precision)	OC	0	0	0	7	0
Invalidated calibration	LC	1	0	0	0	1
Aborted	XC	0	0	0	0	0
Accepted information run	NI	0	0	0	0	0
Total		6	1	2	13	9

L-33-1 (D7038)

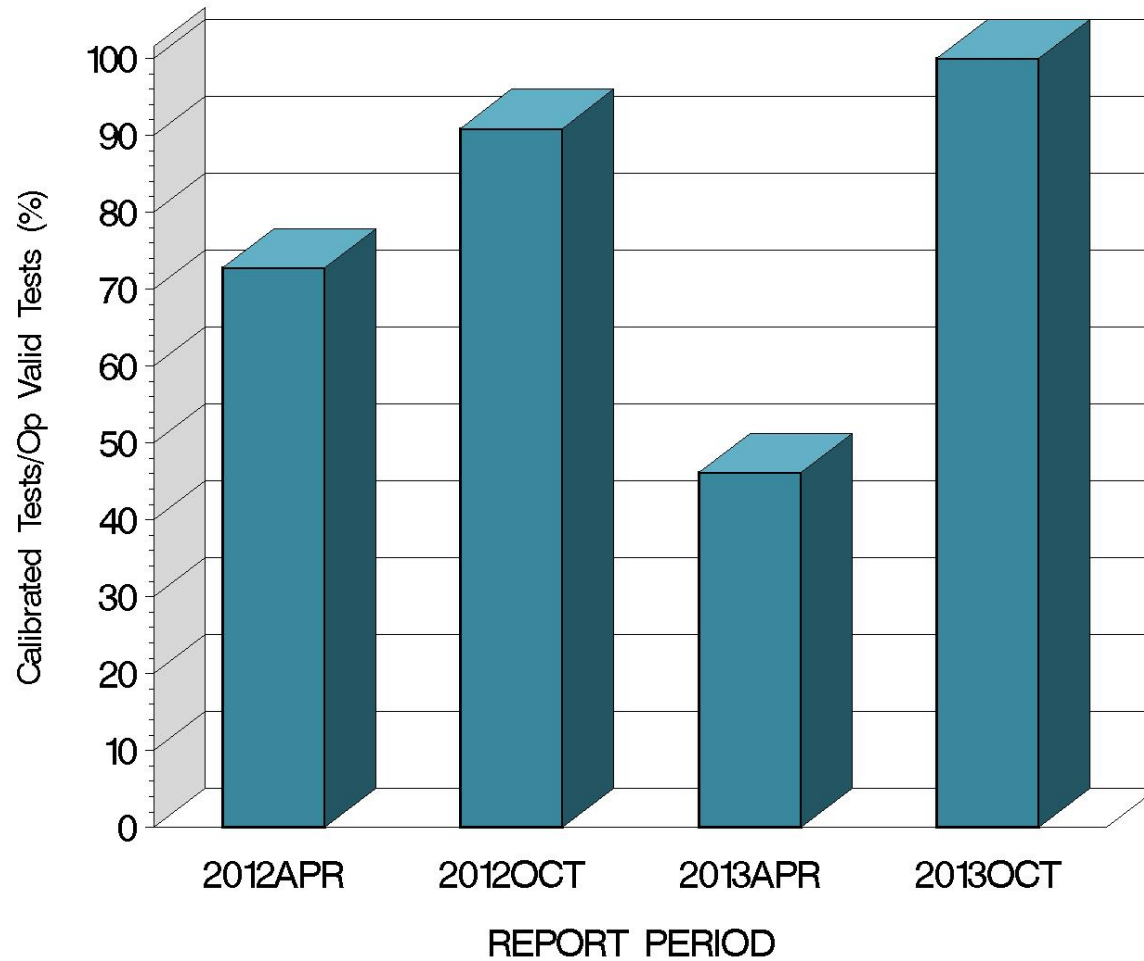
CALIBRATION ATTEMPT SUMMARY



10:32:40 03OCT2013

L-33-1 (D7038)

OPERATIONALLY VALID TESTS
MEETING ACCEPTANCE CRITERIA



10:32:40 03OCT2013

L-33-1 (D7038)

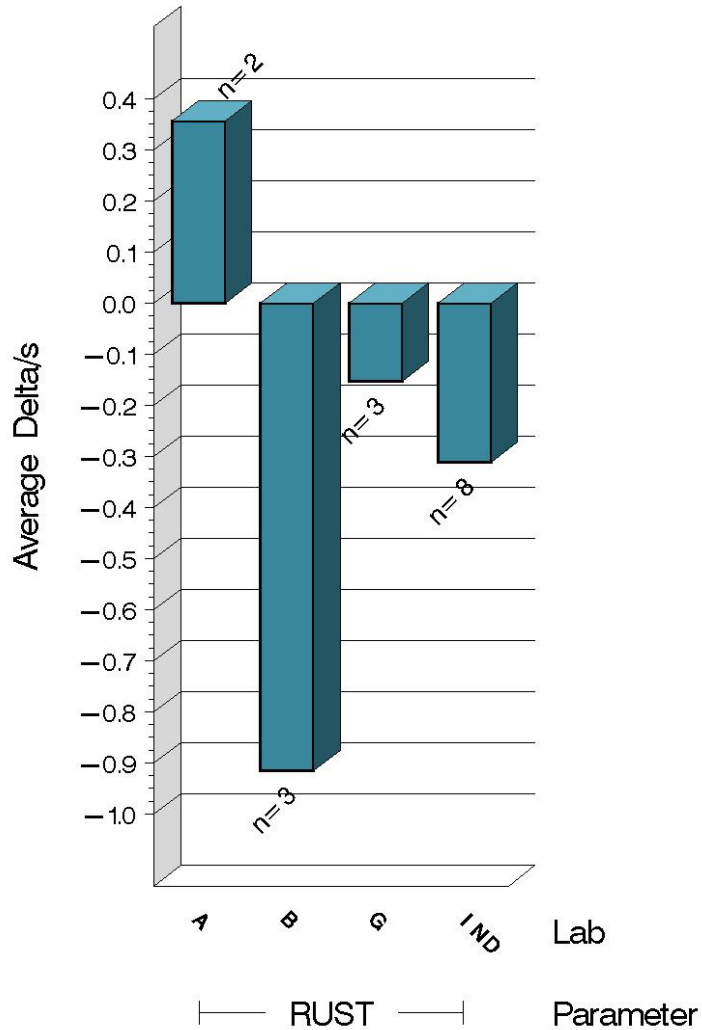
CAUSES FOR LOST TESTS

		Oil			Validity			Loss Rate		
Lab	Cause	123-2	155	155-1	RC	LC	XC	Lost	Starts	%
G	Temperature control problem.	●				●		1	4	25%
	Lost	1	0	0	0	1	0			
	Starts	6	1	2	9	9	9			
	%	17%	0%	0%	0%	11%	0%			

L-33-1 (D7038)

TEST SEVERITY

DELTA/S BY LAB



Average Δ/s by Lab		
Lab	n	RUST
A	2	0.355
B	3	-0.916
G	3	-0.154
Industry	8	-0.312
Shift	8	-0.078

Test Monitoring Center

<http://astmtmc.cmu.edu>

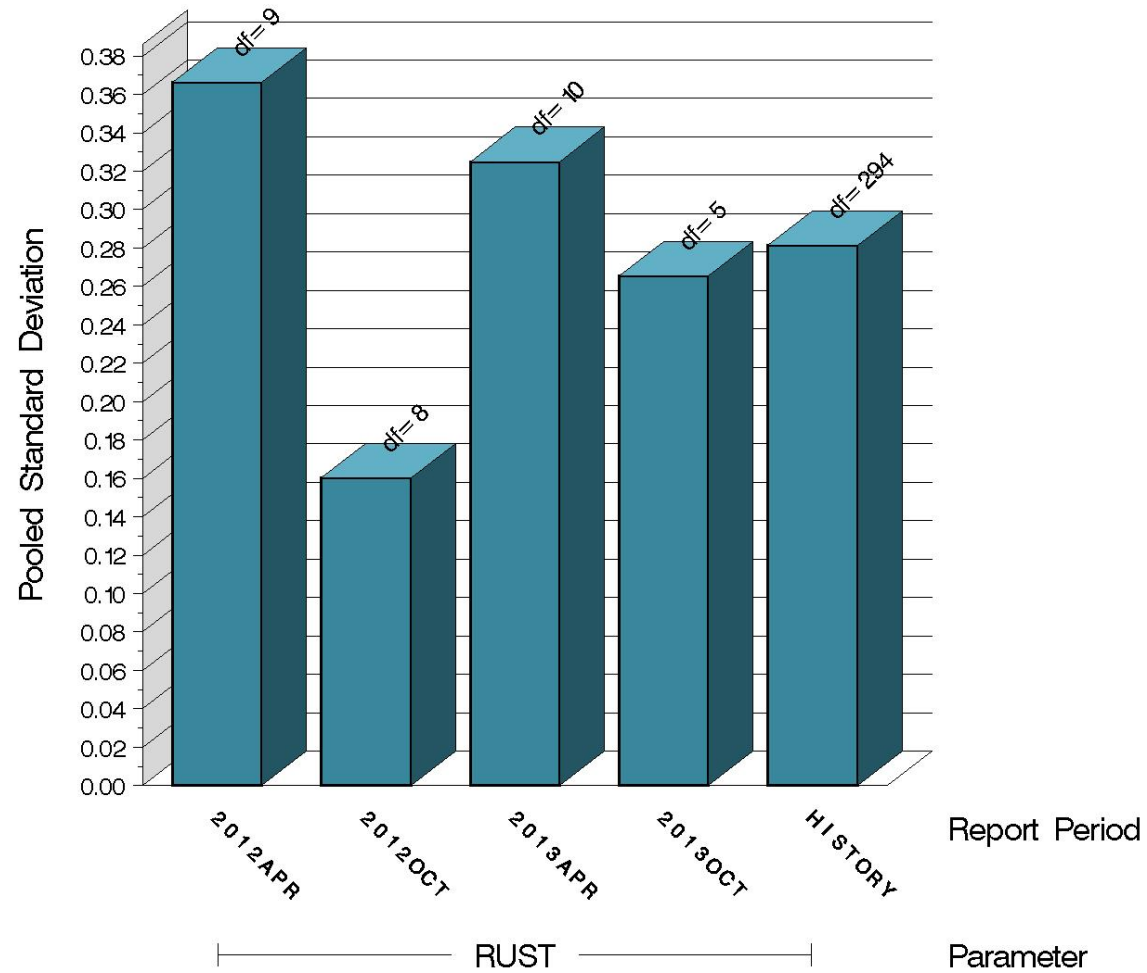


A Program of ASTM International

L-33-1 (D7038)

TEST PRECISION

POOLED STANDARD DEVIATION
BY SIX-MONTH ASTM REPORT PERIOD



10:32:40 03OCT2013

L-33-1 (D7038)

SUMMARY OF SEVERITY & PRECISION

Severity

Average RUST Δ/s this period was -0.312. Using the target standard deviation for oil 155, this equates to -0.078 merits severe.

Precision

RUST precision for the period remained within control chart limits.

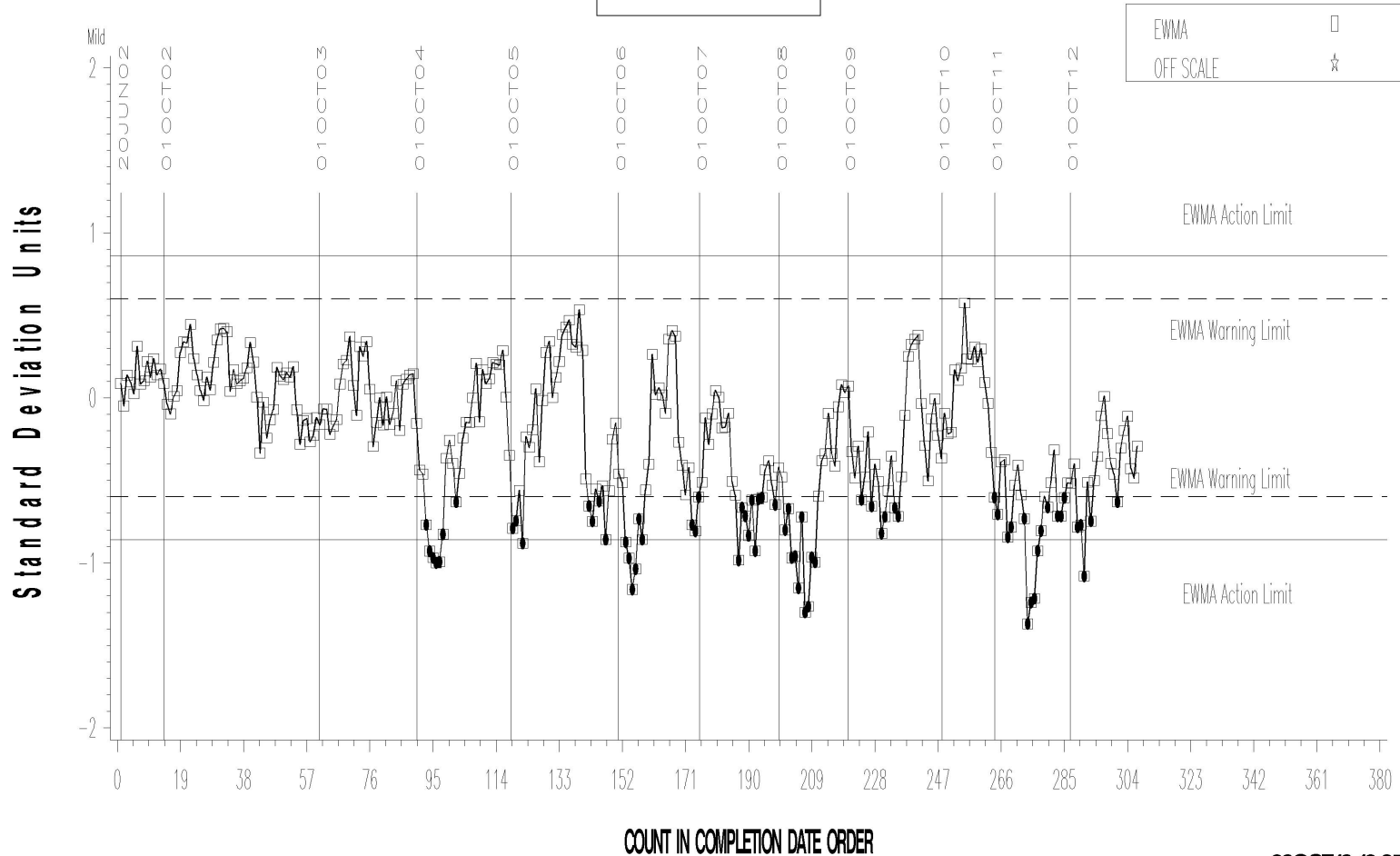
Industry control charts follow.

L-33-1 (D7038)

L-33-1 INDUSTRY OPERATIONALLY VALID DATA

FINAL RUST RESULT

LTMS Severity Analysis



Severe

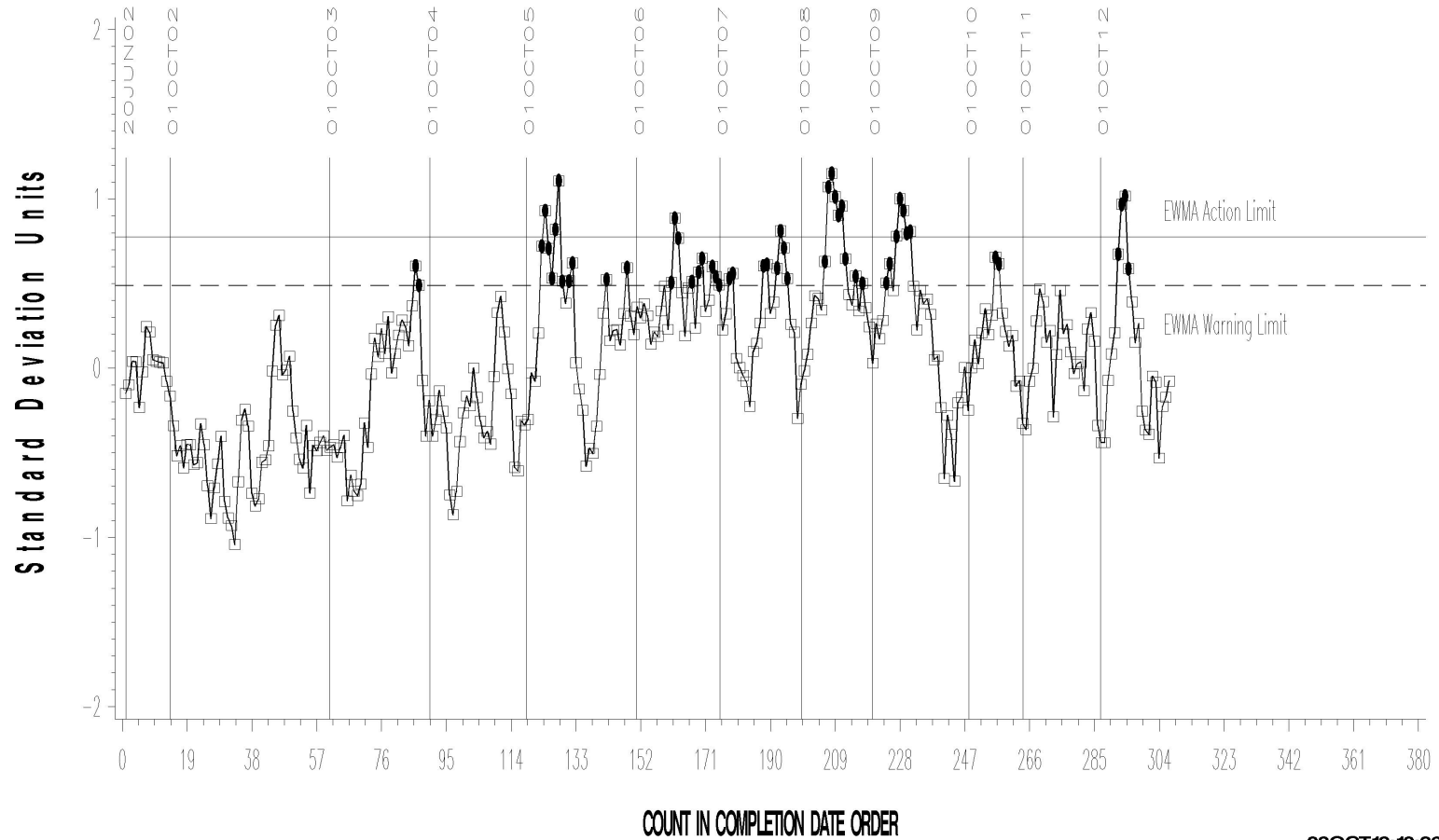
03OCT13:10:25

L-33-1 (D7038)

L-33-1 INDUSTRY OPERATIONALLY VALID DATA

FINAL RUST RESULT

LTMS Precision Analysis



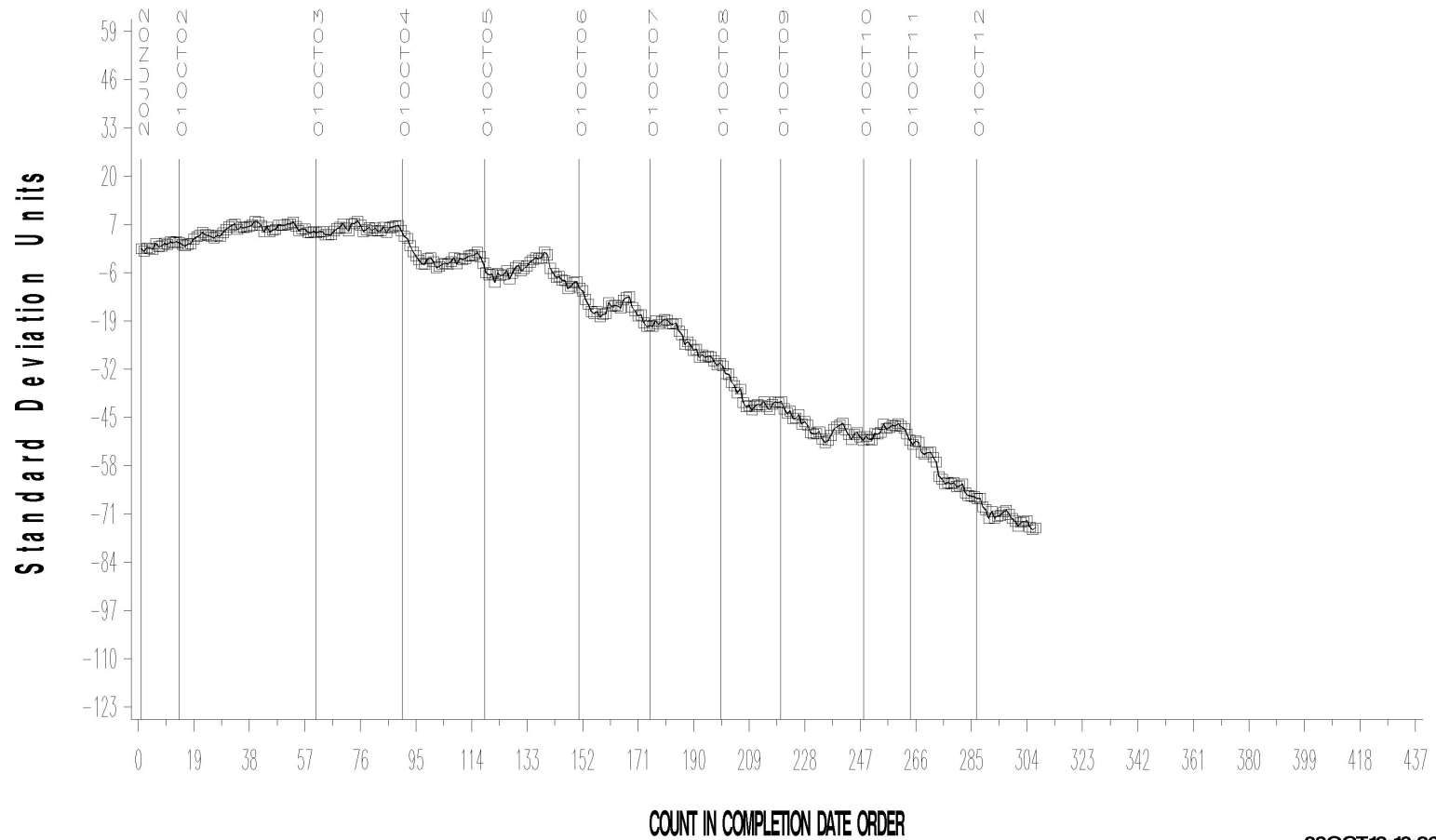
03OCT13:10:26

L-33-1 (D7038)

L-33-1 INDUSTRY OPERATIONALLY VALID DATA

FINAL RUST RESULT

CUSUM Severity Analysis



03OCT13:10:26

L-33-1 (D7038)

TIMELINE ADDITIONS

Effective Date	Information Letter	Event
		No additions have been made this period.

L-33-1 (D7038)

LAB VISITS

No L-33-1 lab visits were conducted during this period.

INFORMATION LETTERS

No L-33-1 information letters were issued during this period.

L-33-1 (D7038)

STATUS OF REFERENCE OIL SUPPLY

Oil	Cans @ Labs	@ TMC	
		Cans	Gallons
123-2	9	162	162.8
155	0	23	23.4
155-1	9	395	395.8
Total	18	580	581.9

The TMC quantity remaining presumes usage only for L-33-1 testing. Oil 155/155-1 is also used in other test areas (L-37, L-37-1, and HTCT).