



Test Monitoring Center

6555 Penn Avenue
Pittsburgh, PA 15206-4489
(412) 365-1000

L-33-1 Information Letter No. 07-1
Sequence No. 8
March 12, 2007

ASTM consensus has not yet been obtained on this information letter. An appropriate ASTM ballot will be issued in order to achieve such consensus.

TO: L-33-1 Mailing List

SUBJECT: 1. Revised Area 1 Rating Surface Description
2. Editorial Changes to Figures A1.8, A1.14, and A1.15

1. At the February 14, 2007 L-33-1 Surveillance Panel meeting, the panel approved a motion revising the Area 1 rating surface description in Test Method D 7038. Revised Table 1 and Figure A1.7 are attached.
2. Editorial changes, recommended by ASTM Section D02.B0.10, were made to Figures A1.8, A1.14, and A1.15

These changes are effective February 14, 2007.

Dale Smith
Chairman
L-33-1 Surveillance Panel

John L. Zalar
Administrator
ASTM Test Monitoring Center

Attachments

c: ftp://ftp.astmtmc.cmu.edu/docs/gears/1331/procedure_and_ils/il07-1.pdf

Distribution: Email

(Revises Test Method D 7038-05a as amended by Information Letters 06-1, 06-2, and 06-3)

TABLE 1 Area Number and Rated Surfaces

Area Number	Description
1	differential case pinion spherical machined thrust surfaces
2	differential case side gear thrust surface and hub I.D.
3	differential gears (side gears) thrust surface and hub O.D.
4	axle housing cover plate without the plug
5	ring gear (Drive gear) tooth surfaces
6	drive pinion tooth surfaces
7	drive pinion roller surfaces
8	drive pinion cup (total raceway length)
9	differential case roller surfaces
10	differential case cup (total raceway length)

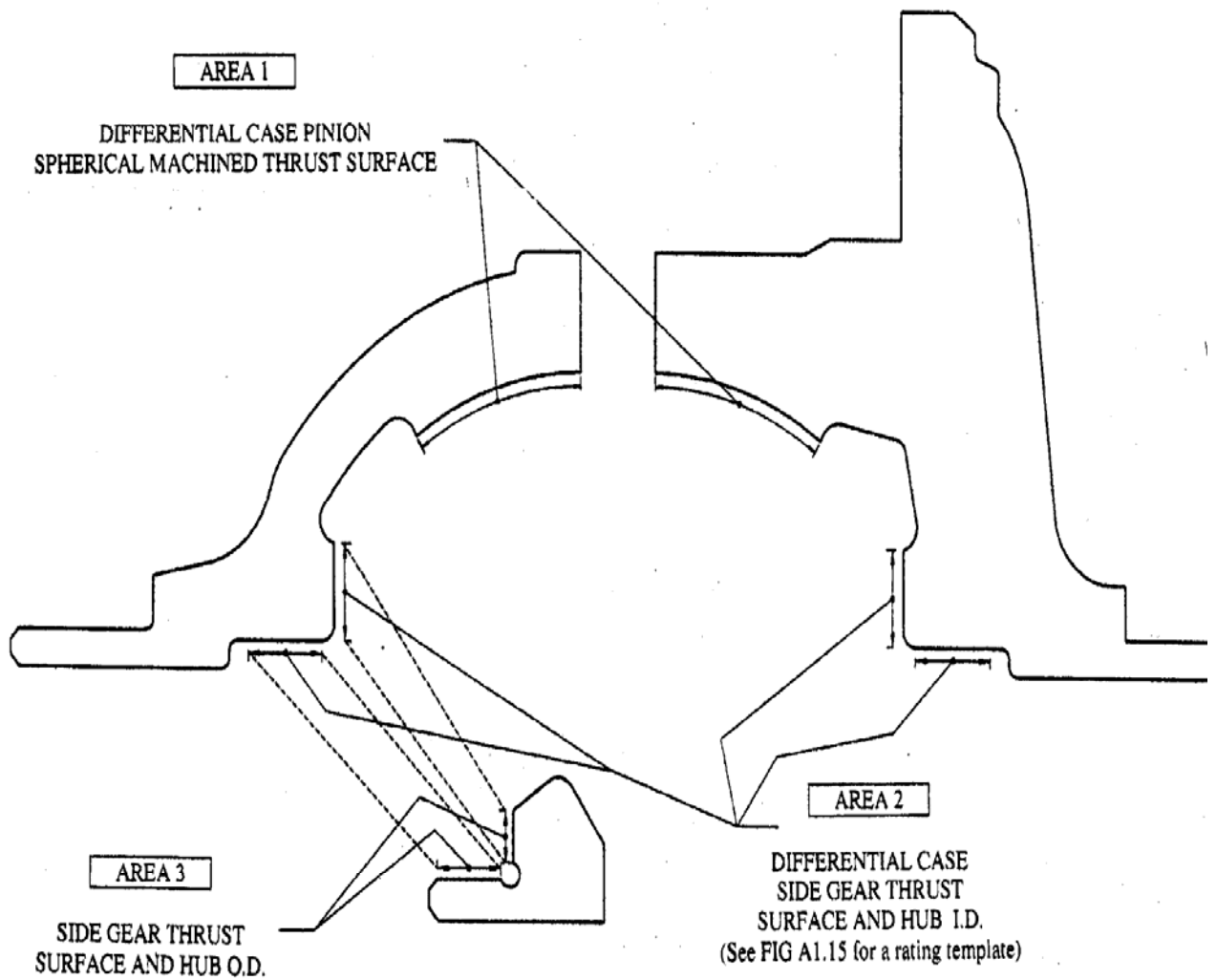
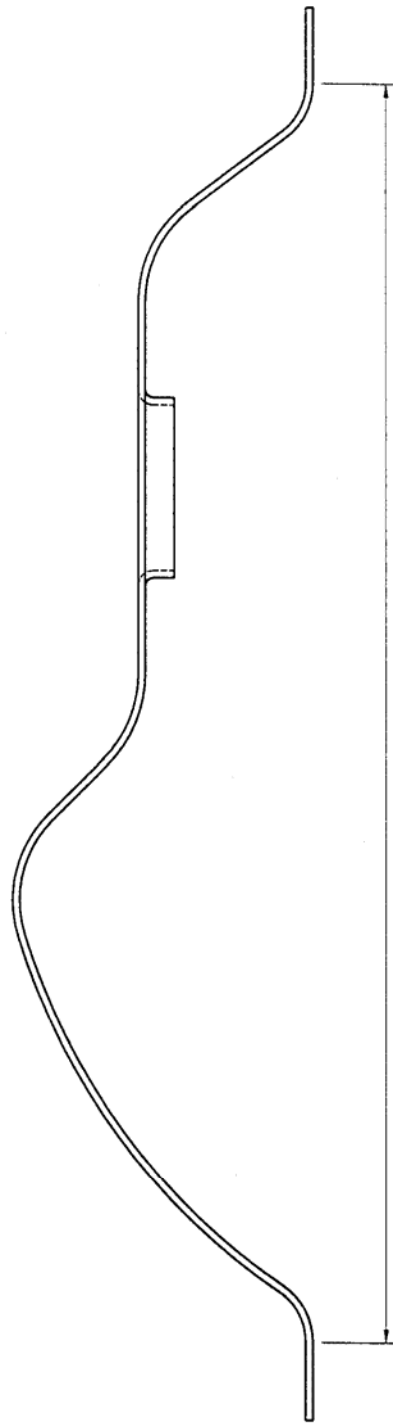


FIG. A1.7 Differential Case



AREA 4

Rating area inside edge of
Axle cover rating template
(See FIG A1.14 for a rating template)

FIG. A1.8 Cover Plate

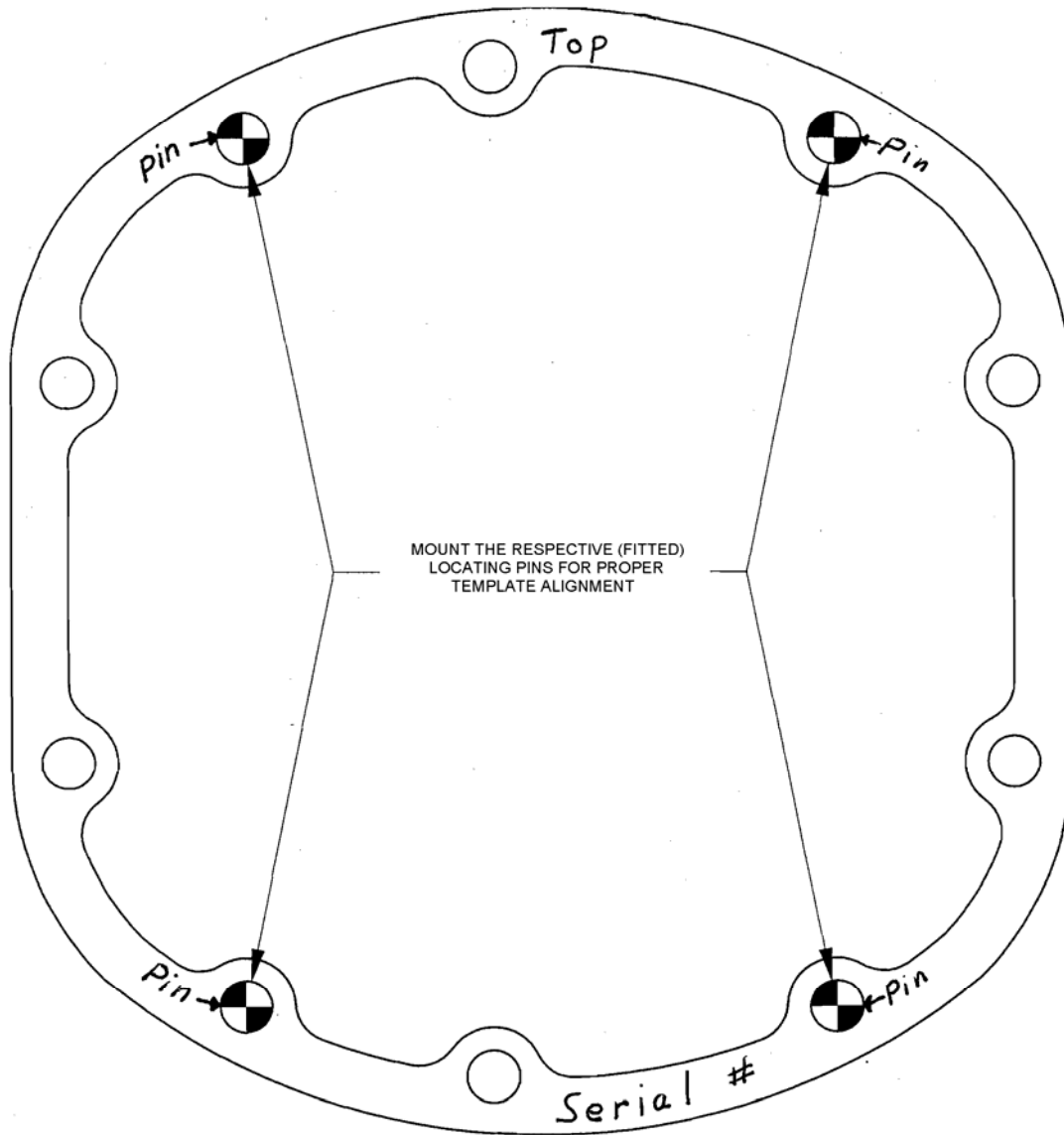
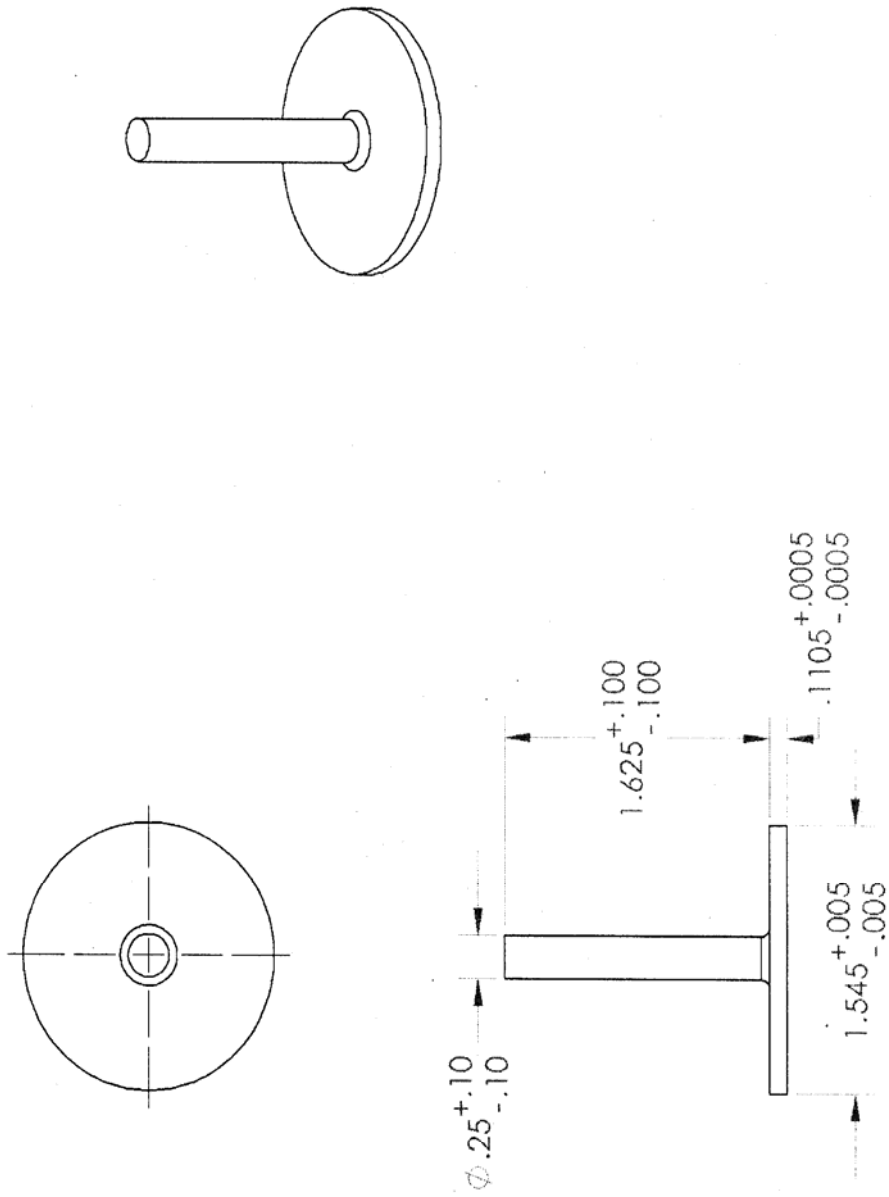


FIG. A1.14 Axle Cover Rating Template (Area 4, See FIG A1.8)



UNLESS OTHERWISE SPECIFIED: DIMENSIONS ARE IN INCH		A	CJK	26Sep06	Initial Release
TOLERANCES:					
FRACTIONAL: 0.					
DECIMAL: 0.					
INTERPRET GEOMETRIC TOLERANCING PER: ASME Y14.5-2009					
MATERIAL	Aluminum				
FINISH					

FIG. A1.15 Differential Case, Area 2, Hub I.D. Rating Template (Area 2, see FIG A1.7)