



Test Monitoring Center

6555 Penn Avenue
Pittsburgh, PA 15206-4489
(412) 365-1000

L-33-1 Information Letter No. 06-3
Sequence No. 7
October 9, 2006

ASTM consensus has not yet been obtained on this information letter. An appropriate ASTM ballot will be issued in order to achieve such consensus.

TO: L-33-1 Mailing List

SUBJECT: 1. Aluminum Differential Case, Area 2, Hub Inside Diameter Rating Template
2. Editorial Changes

1. At the September 6, 2006 L-33-1 Surveillance Panel meeting, the panel approved a motion requiring the use of an aluminum differential case, Area 2, Hub I.D. rating template. A new Section A4.12 and Figure A1.15 have been added to Test Method D7038.
2. Editorial changes were made to Sections 6.2.1 and A4.8

This change is effective with the next reference oil test starting on or after the date of this information letter.

Dale Smith
Chairman
L-33-1 Surveillance Panel

John L. Zalar
Administrator
ASTM Test Monitoring Center

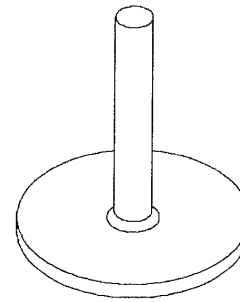
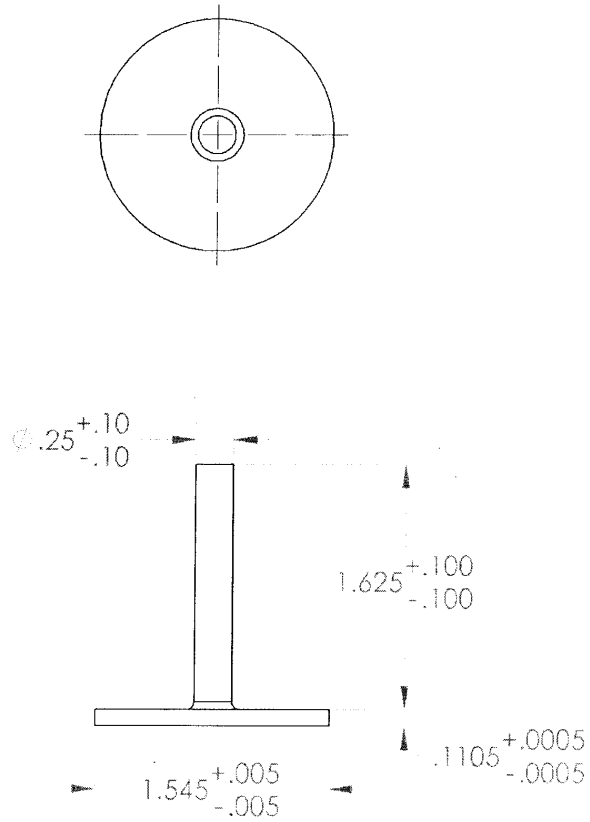
Attachment

c: ftp://ftp.astmtmc.cmu.edu/docs/gears/1331/procedure_and_ils/il06-3.pdf

Distribution: Email

(Revises Test Method D 7038-05a as amended by Information Letters 06-1 and 06-2)

- 6.2.1 *Test Unit Configuration*—Mount the differential housing assembly (Gear version V99.1 or V01.1) on the motoring rig so that the housing cover attaching face is in the vertical plane and at a height that allows the temperature sensing probe to be located in the bottom of the housing. Elements of the motoring rig design are shown in Figs. A1.1–A1.4.
- A4.8 Rate the cover plate (Area 4) with the rating template shown in Fig. A1.14.
- A4.12 Rate the differential case side thrust gear and Hub I.D. (Area 2) with the rating template shown in Fig. A1.15.



UNLESS OTHERWISE SPECIFIED:
 DIMENSIONS ARE IN unit
 TOLERANCES:
 FRACTIONAL: 0.
 ANGULAR: 0.
 DECIMAL: 0.
 INTERPRET GEOMETRIC
 TOLERANCING PER: unit

MATERIAL Aluminum
 FINISH



A CJK 26Sep06 Initial Release

TITLE:

L33 template

DWG. NO.

REV

A

SCALE: 1:1

SHEET 1 OF 1

FIG. A1.15 Differential Case, Area 2, Hub I.D. Rating Template