



Address 100 Barr Harbor Drive
PO Box C700
W. Conshohocken, PA
19428-2959 | USA

Phone 610.832.9500
Fax 610.832.9666
Web www.astm.org

Committee D02 on PETROLEUM PRODUCTS AND LUBRICANTS

Chairman: KENNETH O. HENDERSON, Cannon Instrument Co., 2139 High Tech Road, State College, PA 16803, (814) 353-8000, Fax: (814) 353-8007, e-mail: kenohenderson@worldnet.att.net
First Vice-Chairman: BEN R. BONAZZA, TI Group Automotive Systems, Caro Research Center, 326 Green Street, Caro, MI, 48723 (989) 673-8181 ext. 227, Fax: (989) 673-3241, e-mail: bbonazza@us.tiauto.com
Second Vice-Chairman: JANET L. LANE, ExxonMobil Research & Engrg., 600 Billingsport Rd, Paulsboro, NJ 08066-0480 (856) 224-3302, Fax: (856) 224-3616, e-mail: janet.l.lane@exxonmobil.com
First Secretary: RALPH A. CHERRILLO, Shell Global Solutions (US) Inc., Westhollow Tech Ctr., 3333 Highway 6 South, Houston, TX 77082 (281) 544-8789, Fax: (281) 544-8150, e-mail: ralph.cherrillo@shell.com
Second Secretary: MICHAEL A. COLLIER, Petroleum Analyzer Co. LP, PO Box 206, Wilmington, IL 60481, (815) 458-0216, Fax: (815) 458-0217, e-mail: macvarlen@aol.com
Staff Manager: DAVID R. BRADLEY, (610) 832-9681, Fax: (610) 832-9668, e-mail: dbradley@astm.org

Issued: Dec. 23, 2013
Reply to: Dan Worcester
Southwest Research Institute
6220 Culebra Rd.
San Antonio, TX 78238
Phone: 210.522.2405
Fax: 210.684.7523
Email: dworcester@swri.org

These are the unapproved minutes of the 11.19.2013 Sequence VI Surveillance Panel meeting.

This document is not an ASTM standard; it is under consideration within an ASTM technical committee but has not received all approvals required to become an ASTM standard. It shall not be reproduced or circulated or quoted, in whole or in part, outside of ASTM committee activities except with the approval of the chairman of the committee having jurisdiction and the president of the society. Copyright ASTM, 100 Barr Harbor Drive, West Conshohocken, PA 19428-2959.

The meeting was called to order at 8:45 PM by Chairman Charlie Leverett.

Agenda

The Agenda is the included as **Attachment 1**.

1.0 Roll Call

The Attendance list **Attachment 2**.

There were membership changes. Terry Kowalski is the voting member for Toyota. Kaustav Sinha is the voting member for Oronite. Mark Sutherland is the voting member for TEI.

Also the Secretary managed to delete TEI while updating for this meeting and that has been corrected. I apologize for this error.

2.0 Approval of minutes

2.1 Approval of the minutes of the 08.20.2013 meeting.

Motion – Accept the minutes of the 08.20.2013 VID SP CC.

Rich Grundza, Dan Worcester, second. Unanimous.

2.2 William Buscher will be Motion and Action Recorder for this meeting.

Motions and Actions are included at Attachment 3.

3.0 Action Item Review

3.1 OHT to report VIX engine usage.

There are 25 2009 and 140 2012 engines in inventory. VIE engine life may be less than the VID so this quantity will be a concern.

3.2 The VIE oil pan levels will need to be reviewed and specification add to the draft procedure. Measure of distance from bottom surface of oil pan tab to test full mark on oil pan. – **Those levels will be covered in old business.**

Action Item – SwRI to report VIE oil pan levels for their individual stands. That will be included in these minutes.

3.3 Additized Fuel for VIE. **See Old Business.**

3.4 Find a 0W-16 reference oil, *see progress in the New Business below.*

3.5 VIE Draft - Table 5 information which cannot be generated until sufficient testing/precision matrix has taken place (stats group).

3.6 VIE Draft - Consideration of the weighting of BLB2 and BLA for Candidate 1 & 2 calculations. It is based on the hours from Cand 1 & 2 evaluation relative to BLB2 & BLA evaluations. With aging moving from 16 plus 84 hours to 16 plus 109 hours, I believe the stats group may want to reconsider. ***At this time I'd like to make a formal request for the Stats Group to review and report their findings to me.***

Action Item – Industry statisticians group to review the weighting of BLB2 and BLA for Candidate 1 & 2 calculations. It is based on the hours from Candidate 1 & 2 evaluation relative to BLB2 & BLA evaluations. With aging moving from 16 plus 84 hours to 16 plus 109 hours, we may want to reconsider the weighting.

4.0 Old Business

4.1 Haltermann has obtained a supplier for the additized fuel which is identified as EEE + DCA and it is currently be used in the Industry, as-of this date I have not received any comments on the use of this fuel and *at this time the SP needs to have a Motion made to approve it for use in the VIE.*

Motion – Accept Haltermann EEE + DCA as the official test fuel for the Sequence VIE.

Rich Grundza / Bruce Matthews / Passed 11 – 0 – 1

- 4.2 Obtaining 0W 16 reference oil – Bruce has obtained a 0W 16 oil and it will be shipped to Labs that agreed to participate. *Any questions or comments?*
There was a delay in the blend. It will be called “Seq VI Experimental VIE Testing” oil. 4 labs have agreed to run the oil.

4.3 VIE Oil Pan Levels Reported:

| | |
|----------|------------------------|
| Afton | 77, 78 & 79 mm |
| IAR | 73 & 77 mm |
| Lubrizol | 77, 77, 77, 79 & 79 mm |
| Ashland | no data |
| SwRI | 75, 77, 77, 78 & 79 mm |

The spec is to be obtained from the mean reported value ± 5 mm

5.0 New Business

- 5.1 Currently the D7589 has the current wording concerning the fuel batch used in each test:

7.2.2 Fuel Batch Usage/Documentation—A complete test shall be run on a single batch of test fuel. If a new batch of test fuel is introduced to the laboratory fuel supply system, it shall be done between finite tests. Document the fuel batch designation in the test report. In cases where the run tank contains more than one fuel batch, document the most recent fuel batch in the report.

Due to the addition of the additized VIE fuel and the likely possibility of additional fuels in GF-6 it has/will be a burden on the Labs due to the lack of available storage tanks.

At this time Austin Rhode of Afton Chemical would like to present his analysis of Haltermann EEE fuel properties on Sequence VI FEI Calculations, this was sent to the SP on 11/05/13. **See Attachment 4.**

Motion – 7.2.2 Fuel Batch Usage/Documentation—A lab should strive to complete test on a single batch of test fuel. If a lab is not able to complete a test on a single fuel batch, the lab may switch to the next available fuel batch. Fuel is consumed at the stand level on a first in-first out basis. Once a stand migrates to the next fuel batch, it can no longer use a prior batch. Document the fuel batch in use at the start of the test in the test report. In cases where the run tank contains more than one fuel batch, document the most prevalent fuel batch in the report.

Dave Glaenzer / No Second/ This motion was tabled pending Stat Group review and will be covered in a conference call.

6.0 Next Meeting or Conference Call

At the call of the Chairman

Meeting Adjourned

The meeting adjourned at 9:50 AM.

Sequence VI Surveillance Panel conference Call Agenda

SwRI November 19, 2013 9:00 – 11:00

Call-in information is included below:

Call-in Number: 866-588-1857
Conference Code: 2105226802

1.0) Roll Call

Do we have any membership changes or additions?

2.0) Approval of minutes

2.1) Approve the minutes from the August 20, 2013 Sequence VI Surveillance Panel.

3.0) Action Item Review

3.1 OHT to report VID & VIE engine usage and expected depletion date of VID engines.

3.2 The VIE oil pan levels will need to be reviewed and specification add to the draft procedure. Measure of distance from bottom surface of oil pan tab to test full mark on oil pan. – *Labs to report to Chairman*

3.3 Additized Fuel for VIE, ***see update in Old Business below.***

3.4 Find a 0W-16 reference oil, ***see progress in the New Business below.***

3.5 VIE Draft - Table 5 information which cannot be generated until sufficient testing/precision matrix has taken place (stats group).

3.6 VIE Draft - Consideration of the weighting of BLB2 and BLA for Candidate 1 & 2 calculations. It is based on the hours from Cand 1 & 2 evaluation relative to BLB2 & BLA evaluations. With aging moving from 16 plus 84 hours to 16 plus 109 hours, I believe the stats group may want to reconsider. ***At this time I'd like to make a formal request for the Stats Group to review and report their findings to me.***

4.) Old Business

4.1 Haltermann has obtained a supplier for the additized fuel which is identified as EEE + DCA and it is currently be used in the Industry, as-of this date I have not received any comments on the use of this fuel and at this time the SP needs to have a Motion made to approve it for use in the VIE.

4.2 Obtaining 0W 16 reference oil – Bruce has obtained a 0W 16 oil and it will be shipped to Labs that agreed to participate. *Any questions or comments?*

4.3 VIE Oil Pan Levels Reported:

| | |
|----------|----------------|
| Afton | 77, 78 & 79 mm |
| IAR | 73 & 77 mm |
| Lubrizol | |
| Ashland | |
| SwRI | |

The spec is to be obtained from the mean reported value \pm 5 mm

5.) New Business

5.1 Currently the D7589 has the current wording concerning the fuel batch used in each test:

*7.2.2 Fuel Batch Usage/Documentation—***A complete test shall be run on a single batch of test fuel.** If a new batch of test fuel is introduced to the laboratory fuel supply system, it shall be done between finite tests. Document the fuel batch designation in the test report. In cases where the run tank contains more than one fuel batch, document the most recent fuel batch in the report.

Due to the addition of the additized VIE fuel and the likely possibility of additional fuels in GF-6 it has/will be a burden on the Labs due to the lack of available storage tanks.

At this time Austin Rhode of Afton Chemical would like to present his analysis of Haltermann EEE fuel properties on Sequence VI FEI Calculations, this was sent to the SP on 11/05/13.

6.) Next Meeting



Call of the chairman

7.) Meeting Adjourned

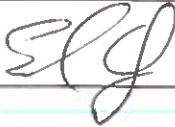

ASTM SEQUENCE VI

| Name | Address | Phone/Fax/Email | Attendance |
|---|--|--|---|
| Jason Bowden Voting Member | OH Technologies, Inc. P.O. Box 5039 Mentor, OH 44061-5039 | Phone: 440-354-7007 Fax: 440-354-7080 jhbowden@ohtech.com |  |
| Timothy Caudill Voting Member | Ashland, Inc. 21st and Front Streets Ashland, KY 41101 | Phone: 606-329-5708 Fax: 606-329-3009 Tlcaudill@ashland.com | |
| David Glaenzer Voting Member | Afton Research Center 500 Spring Street Richmond, VA 23218 | Phone: 804-788-5214 Fax: 804-788-6358 Dave.Glaenzer@aftonchemical.com |  |
| Rich Grundza Voting Member | ASTM TMC 6555 Penn Ave. Pittsburgh, PA 15206-4489 | Phone: 412-365-1034 Fax: 412-365-1047 reg@astmtmc.cmu.edu |  |
| Tracey King Voting Member | Haltermann | tking@jhaltermann.com |  |
| Charlie Leverett Voting Member | Intertek Automotive Research 5404 Bandera Road San Antonio, TX 78238 | Phone: 210-647-9422 Fax: 210-523-4607 charlie.leverett@intertek.com |  |
| Jim Linden Voting Member | Toyota → Teri Kowalski | lindenjim@hotmail.com | |
| Jo Martinez Voting Member | Chevron Oronite Company LLC 4502 Centerview Ste. 210 San Antonio, TX 78228 | Phone: 210.731.5605 Fax: 210.731.5621 jogm@chevron.com |  |
| Bruce Matthews Voting Member | GM Powertrain Engine Oil Group Mail Code: 483-730-472 823 Joslyn Rd | Pontiac, MI 48340 Phone: 248-830-9197 bruce.matthews@gm.com |  |
| Timothy Miranda Voting Member | BP Castrol Lubricants USA 1500 Valley Road Wayne, NJ 07470 | Phone: 973-305-3334 Timothy.Miranda@bp.com |  |
| Nathaniel Moles Voting Member | Lubrizol 29400 Lakeland Blvd. Wickliffe, OH 44092 | Phone: (440) 347-4472 Nathaniel.Moles@Lubrizol.com |  |
| Mark Mosher Voting Member | ExxonMobil 600 Billingsport Road | Phone: 856-224-2132 Fax: 856-224-3628 |  |

ASTM SEQUENCE VI

| Name | Address | Phone/Fax/Email | Attendance |
|--------------------------------|--|--|---|
| | Paulsboro, NJ 08066 | mark_r_mosher@exxonmobil.com | |
| Andy Ritchie Voting Member | Infineum 1900 East Linden Ave. Linden, NJ 07036-0735 | Phone: 908-474-2097 Fax: 908-474-3637 Andrew.Ritchie@infineum.com | |
| Ron Romano Voting Member | Ford Motor Company 21500 Oakwood Blvd POEE Bldg Rm DR 167 MD 44 Dearborn, MI 48121-2053 | Phone: 313-845-4068 rromano@ford.com |  |
| Haiying Tang Voting Member | Chrysler | Phone: 248-512-0593 HT146@Chrysler.com | |
| Dan Worcester Voting Member | Southwest Research Institute 6220 Culebra Road San Antonio, TX 78228 | Phone: 210.522.2405 dan.worcester@swri.org |  |

Guests

| | | | |
|------------------|--|---|---|
| Ed Altman | ed.altman@aftonchemical.com | Afton  | |
| Bob Campbell | Bob.Campbell@aftonchemical.com | Afton | |
| Todd Dvorak | todd.dvorak@aftonchemical.com | Afton  |  |
| Christian Porter | Christian.porter@aftonchemical.com | Afton | |
| Jeremy Styer | Jeremy.styer@aftonchemical.com | Afton | |
| Greg Guinther | greg.guinther@aftonchemical.com | Afton | |
| Don Smolenski | donald.j.smolenski@gm.com | Evonik | |
| Doyle Boese | Doyle.boese@infineum.com | Infineum | DNB |
| Mike McMillan | mmcmillan123@comcast.net | Infineum <i>Voting for Andy</i> | |
| Bob Olree | olree@netzero.net | Intertek | |
| Angela Willis | angela.p.willis@gm.com | GM | |

ASTM SEQUENCE VI

| Name | Address | Phone/Fax/Email | Attendance |
|--|---|------------------------|------------|
| Robert Stockwell | Robert.Stockwell@GM.com Phone: 210.563.0785 | GM | |
| Jeff Kettman | Jeff.kettman@gm.com | GM | |
| Chris Castanien | Chris.Castanien@lubrizol.com | Lubrizol | |
| Jerry Brys | Jerome.brys@lubrizol.com | Lubrizol | SNBS |
| Jessica Buchanan | Jessica.Buchanan@Lubrizol.com | Lubrizol | |
| Dwight Bowden | dhbowden@ohtech.com | OHT | |
| Matt Bowden | mjbowden@ohtech.com | OHT | MB |
| Guy Stubbs | Guy.Stubbs@swri.org | SwRI | |
| William Buscher | wbuscher@swri.edu | SwRI | WAB |
| Scott Stap | Scott.stap@tgdirect.com | TG Direct | SS |
| Clayton Knight | cknight@tei-net.com | TEI | CK |
| Mark Sutherland | msutherland@tei-net.com | TEI | MS |
| <i>Add as Voting Member</i> Jeff Clark | jac@astmtmc.cmu.edu | TMC | |
| Teri Kowalski <i>Voting member</i> | teri.kowalski@tema.toyota.com | Toyota | TK |
| ADDISON SCHWEITZER | ADDISON.SCHWEITZER@INTERTEK.COM | INTERTEK | IS |
| E. A. HAP Thompson | hapjthom@aol.com | VIÉ Fac. I. T. TOR | HT |
| *Michael Conrad | michael.conrad@lubrizol.com | Lubrizol | MC |
| George Szappanos | george.szappanos@lubrizol.com | LZ | |
| JOE GLASER | Joe@lubrizol.com | Lubrizol Corp. | JG |
| *Kaustav Sinha <i>(add as voting member)</i> | KSinha@chevron.com | Chevron Oronite | KS |
| Austin Rhodes | Austin.Rhodes@AftonChemical.com | Afton Chemical | AR |
| Adam Sworski | aesworski@ashland.com | Ashland | AS |
| Ah LOPEZ | | Interstell | AL |
| Mike McMillan | | | |
| Gordon Farnsworth | | | |
| CHRIS TAYLOR | CHRIS.TAYLOR@VPACINEFUELS.COM | VP SPECIALTY CHEMICALS | C.T. |

* Add to distribution List

Sequence VI Surveillance Panel
November 19, 2013
9:00AM – 11:00AM
Southwest Research Institute
San Antonio, TX

Motions and Action Items

As Recorded at the Meeting by Bill Buscher

1. Action Item – Industry statisticians group to review the weighting of BLB2 and BLA for Candidate 1 & 2 calculations. It is based on the hours from Candidate 1 & 2 evaluation relative to BLB2 & BLA evaluations. With aging moving from 16 plus 84 hours to 16 plus 109 hours, we may want to reconsider the weighting.
2. Motion – Accept Haltermann EEE + DCA as the official test fuel for the Sequence VIE.

Rich Grundza / Bruce Matthews / Passed 11 – 0 – 1

3. Action Item – SwRI to report VIE oil pan levels for their individual stands.
4. Action Item – Industry statisticians group to review Sequence VID, Haltermann EEE fuel batch raw data and the impact of fuel batch properties on FEI results.



Sequence VI: Impact of Fuel Properties on FEI Calculations

Austin Rhodes
November 19, 2013

Passion for Solutions™

Executive Summary

- ▲ An analysis was performed to estimate the relationship between the fuel batch properties and the *BL Before* and *BL After* fuel consumption.
- ▲ For each of the VID reference tests, a simulated *worst case scenario* change in the fuel batch was introduced during the BL portions of the reference test.
- ▲ The impact of the simulated fuel batch change during the test was evaluated to estimate the effect on FEI1 and FEI2.
- ▲ A review of the simulated fuel batch changes suggests that the practical impact of changing a fuel batch during a VID test is negligible.

Outline

Ultimately we wanted to answer the following question:

- ▶ Do batch-to-batch differences in Sequence VID fuels affect the reported Fuel Economy Improvement values?

Analysis Approach:

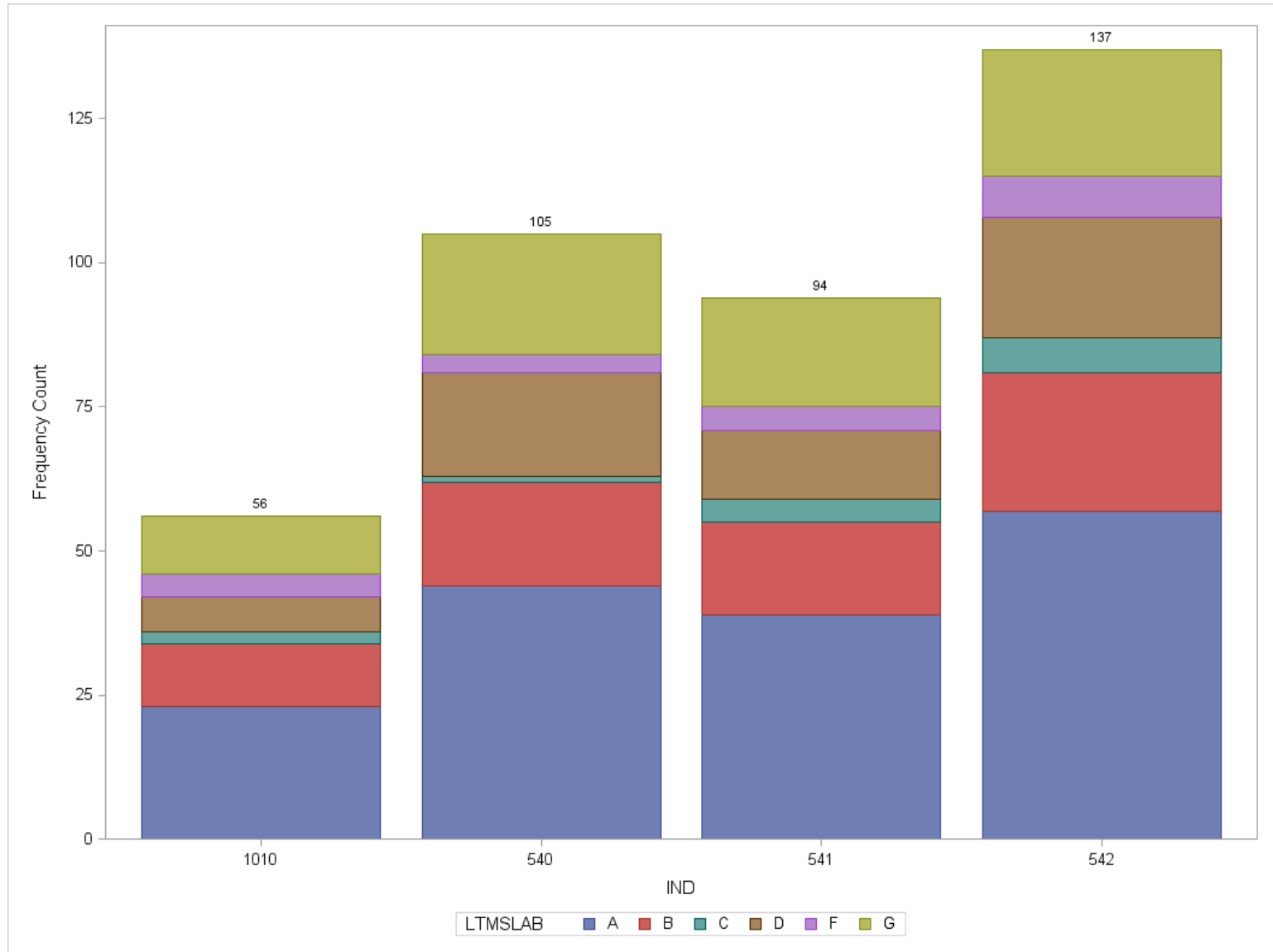
- ▶ Use statistical analysis to relate the Haltermann Certificate of Analysis (C of A) fuel properties to the fuel consumed during the BL portions of the reference test.
- ▶ The impact on the fuel consumption with the simulated fuel batch change is evaluated to estimate the effect on FEI1 and FEI2.
- ▶ A review of the simulated results will help to quantify the magnitude of the FEIs with the fuel batch changes.

Scope of Analysis

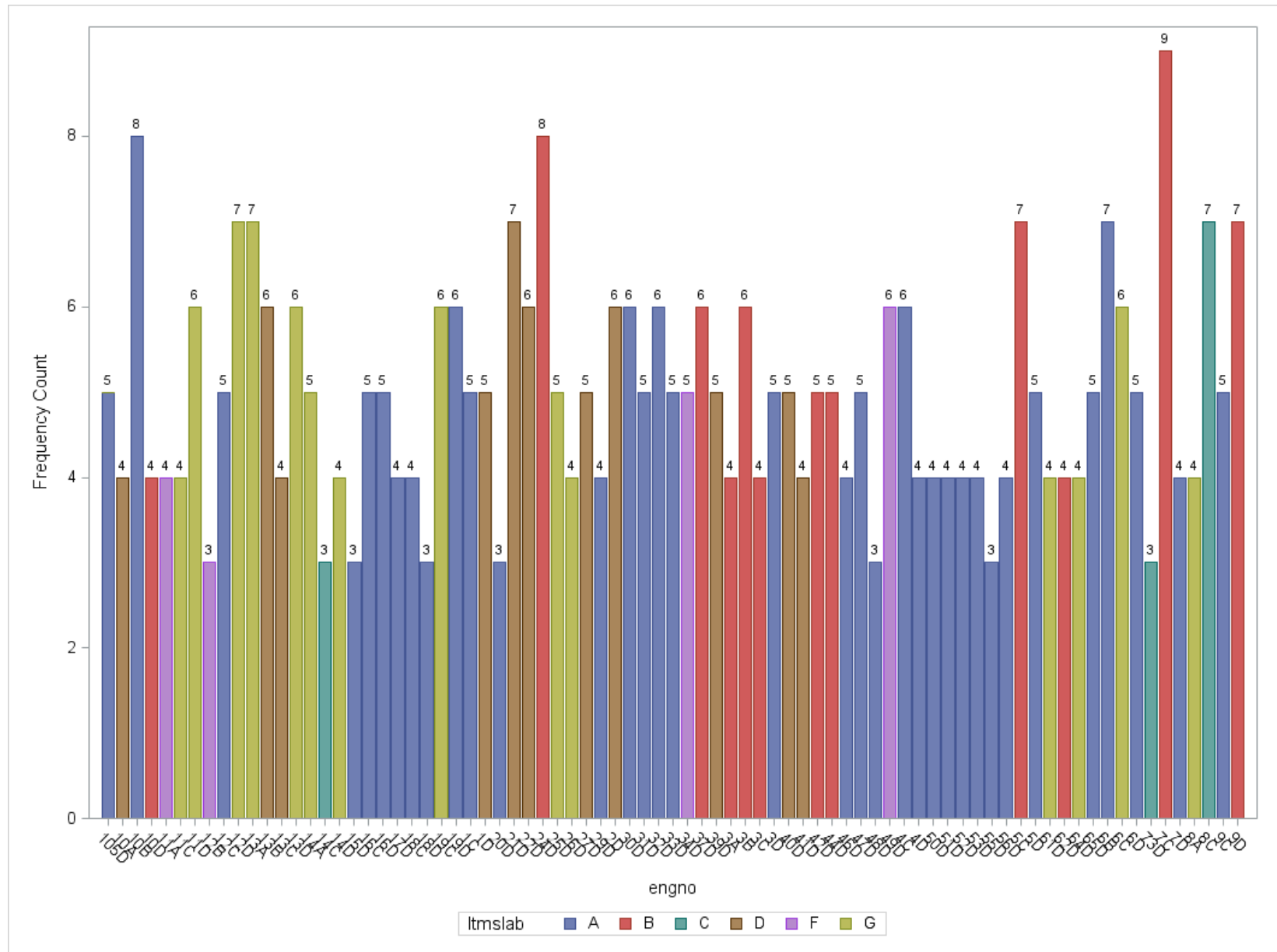
Data Set for Analysis:

- ▶ Initially included all chartable test results ($n = 399$) and all four reference oils (540, 541, 542, 1010)
- ▶ Dropped 4 runs due to missing fuel batch (needed batch code for Certificate of Analysis lookup)
- ▶ Dropped 3 runs due to only one run on engine (not enough information to model engine/stand bias)
- ▶ Remaining data set for analysis $n = 392$

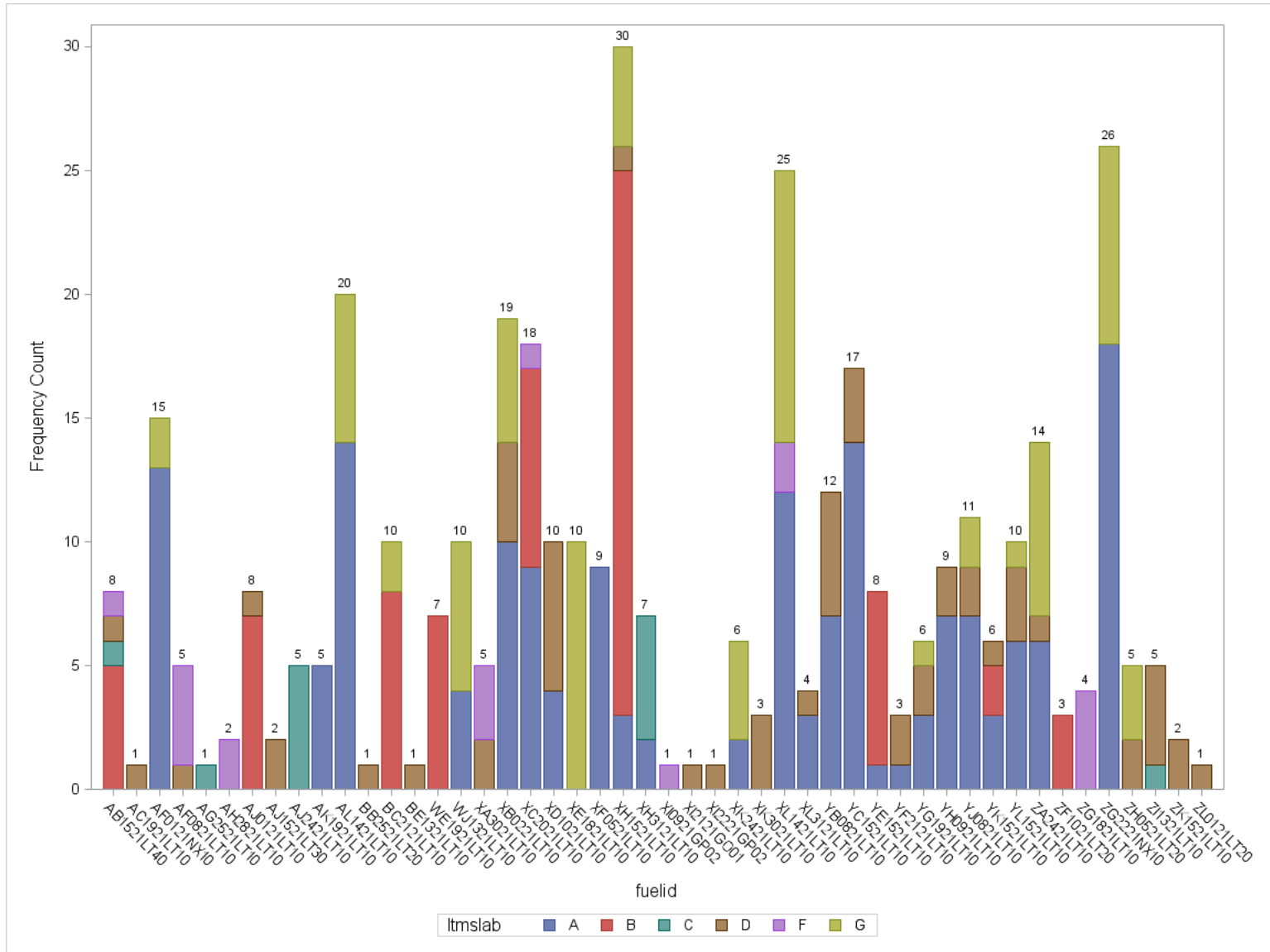
Scope of Analysis: Reference Test Oil - Histogram



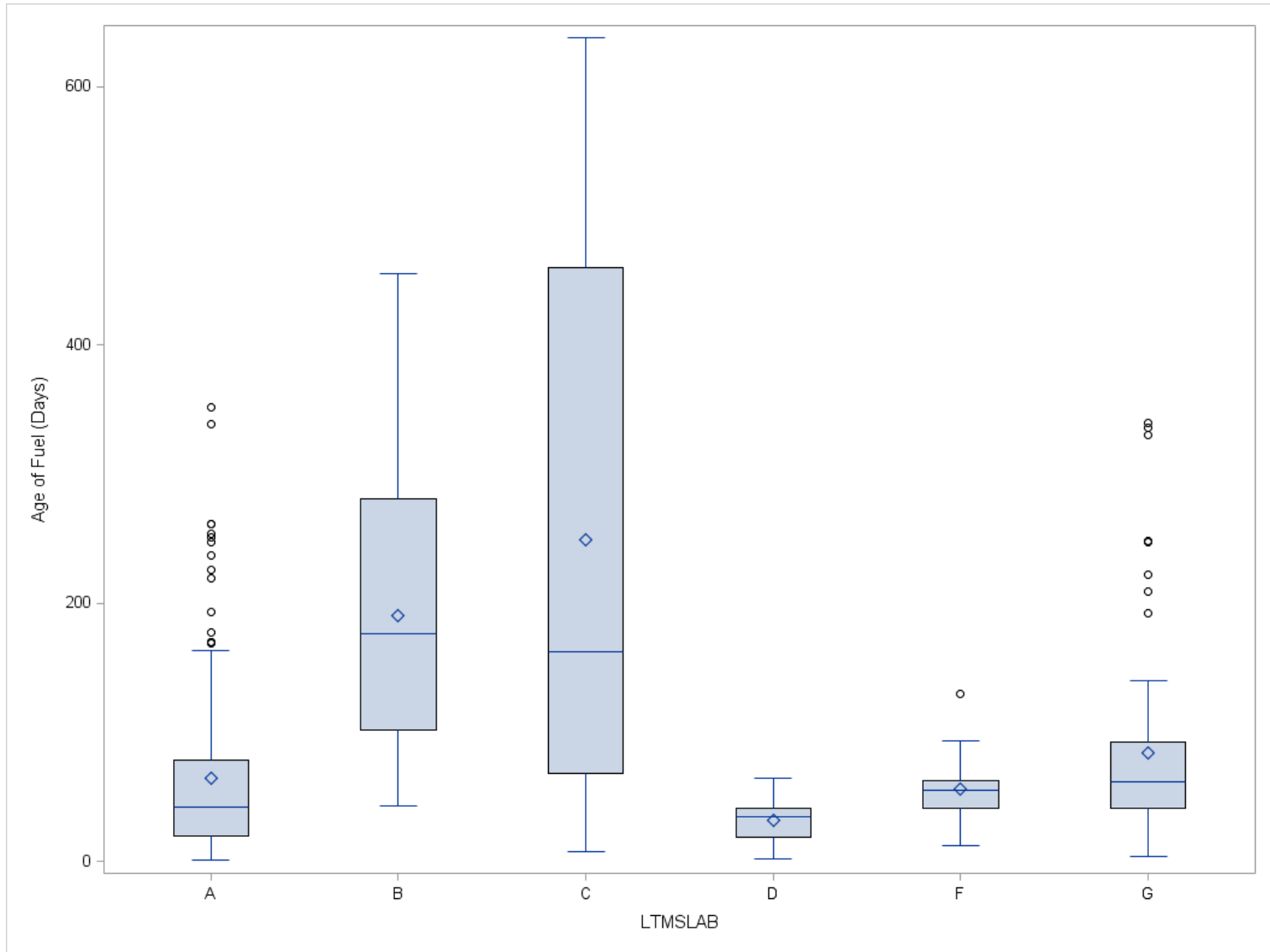
Scope of Analysis: Ref. Runs per Engine/Stand



Scope of Analysis: Ref. Test Fuel Batches



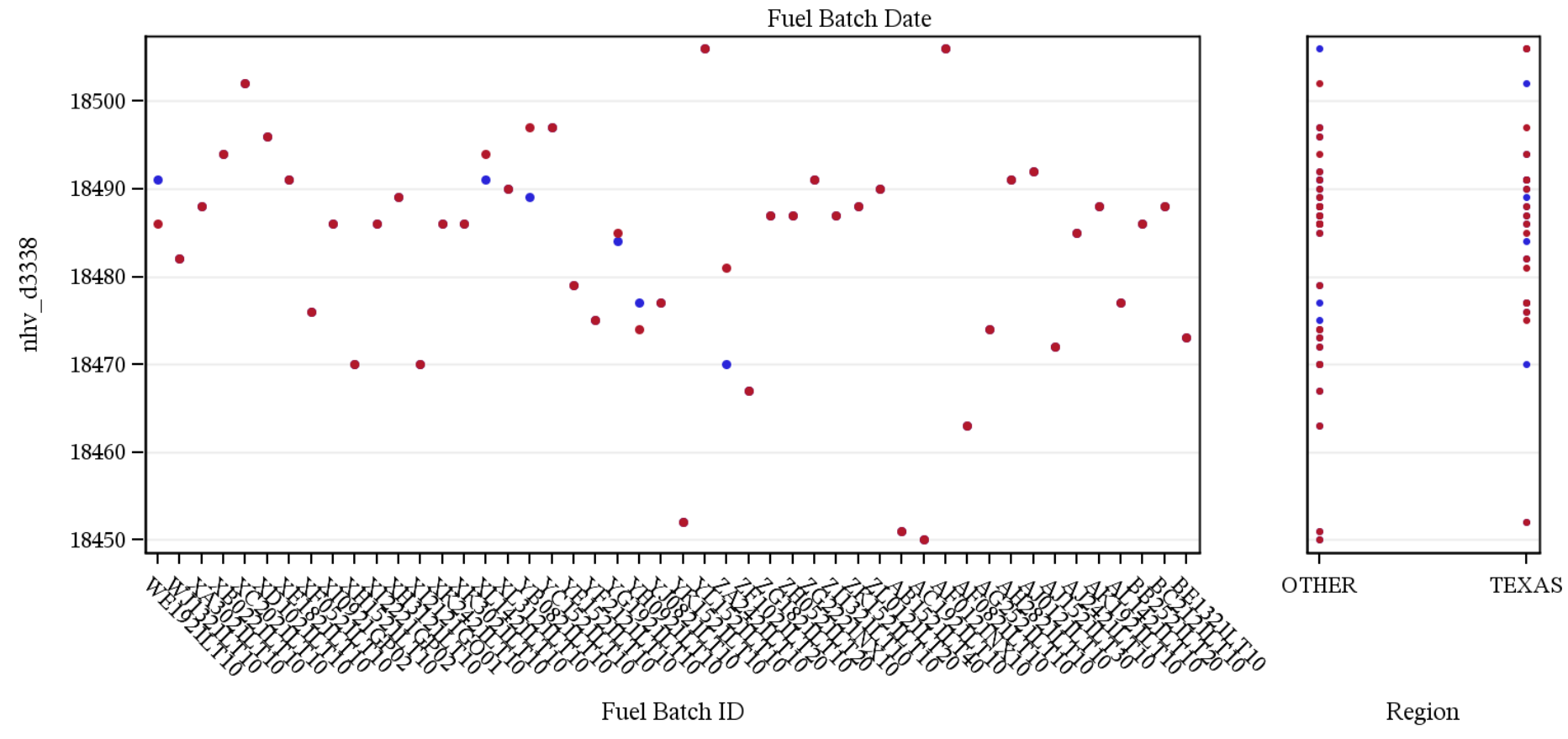
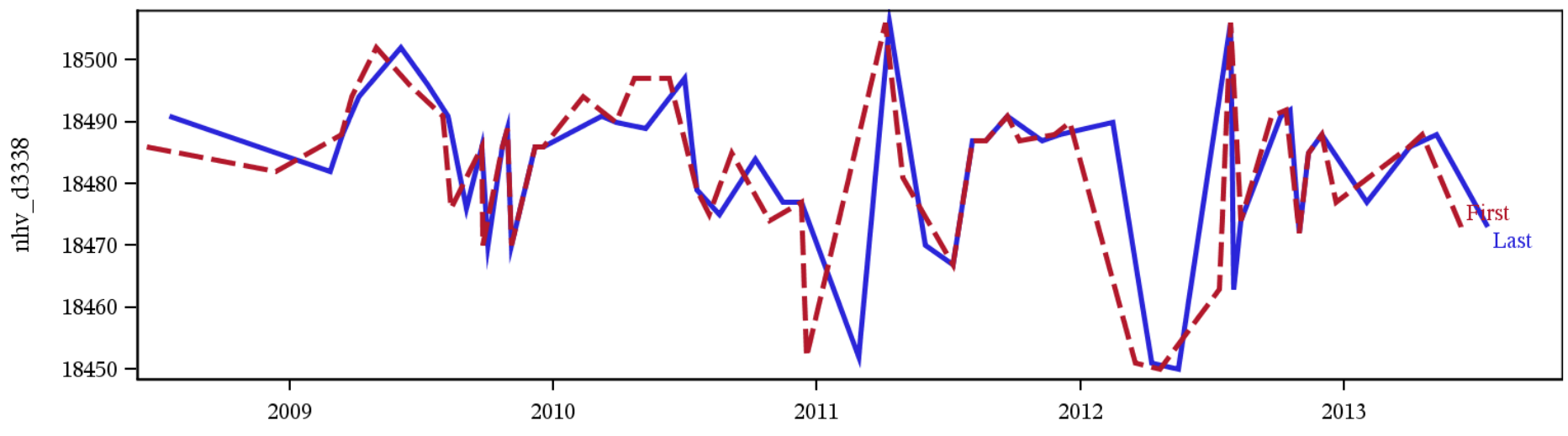
Scope of analysis: Reference Test Fuel Age (time lag between reference test date and last C of A)

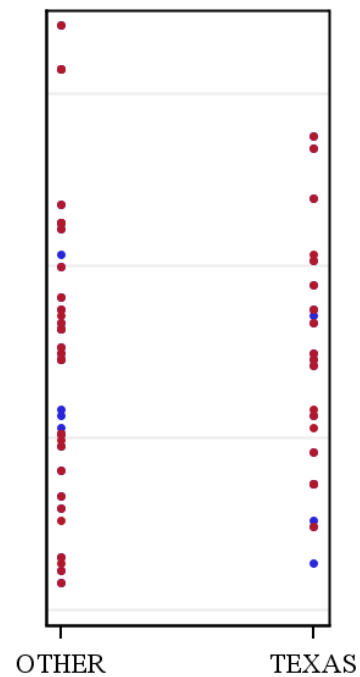
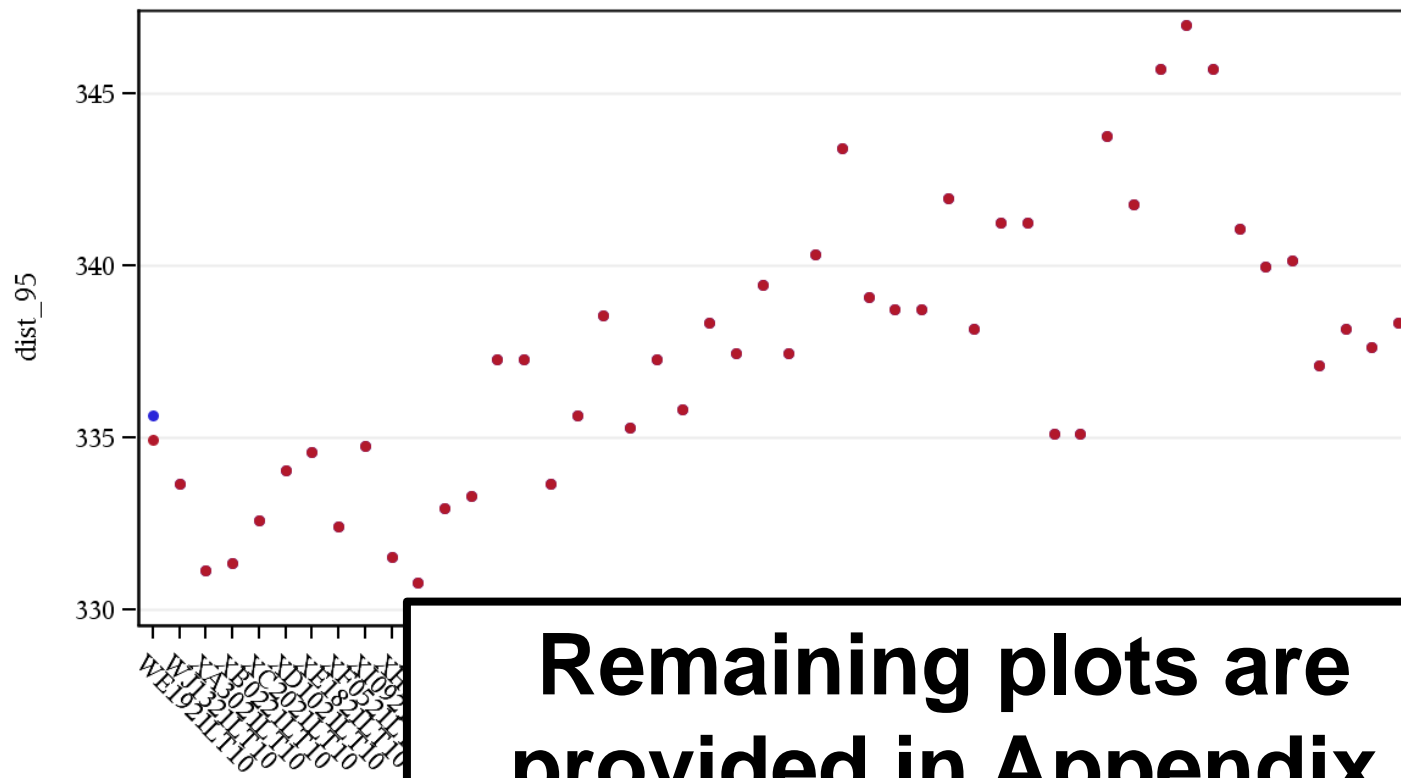
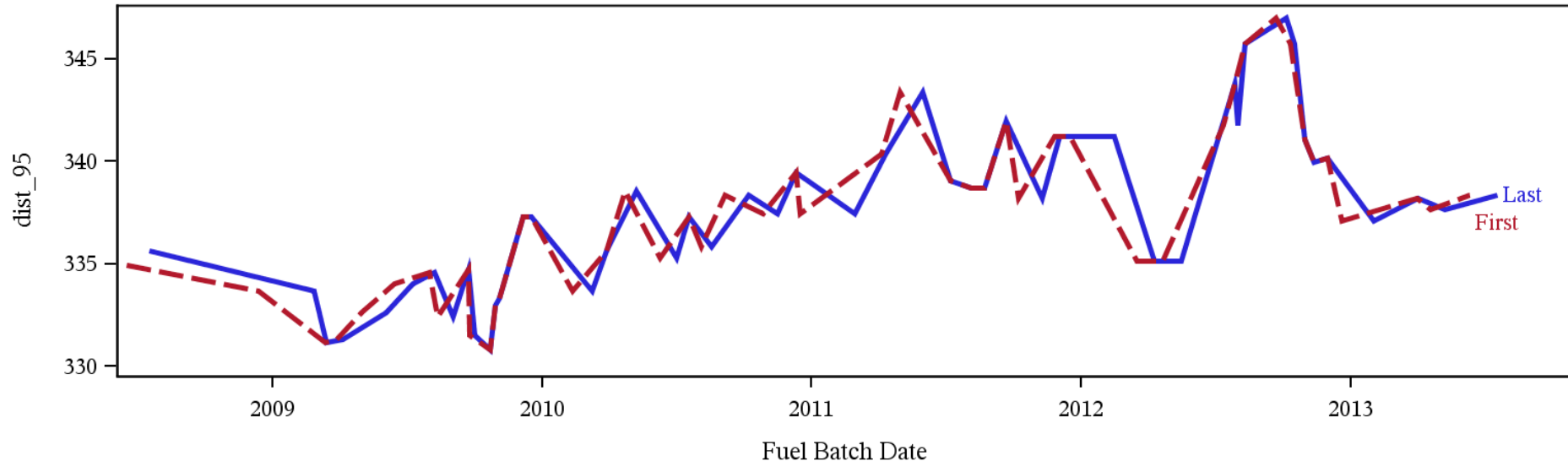


Scope of Analysis

Due diligence to ensure integrity of data:

- **Cleaned minor typos in reported fuel batch codes**
 - For example: “O” to 0, prefix 2 to “Z”, etc.
- **Extensively analyzed C of A results to detect changes in reported units**
 - For example: Some RVP values reported in PSI, others in KPA → had to convert data to same scale
- **Univariate time series plots to detect changes in C of A results across time and from batch-to-batch**
 - For example: Some fuel batches had multiple Certificates of Analysis → made sure trends/measurements were consistent
 - Looked for possible regional differences in fuel properties



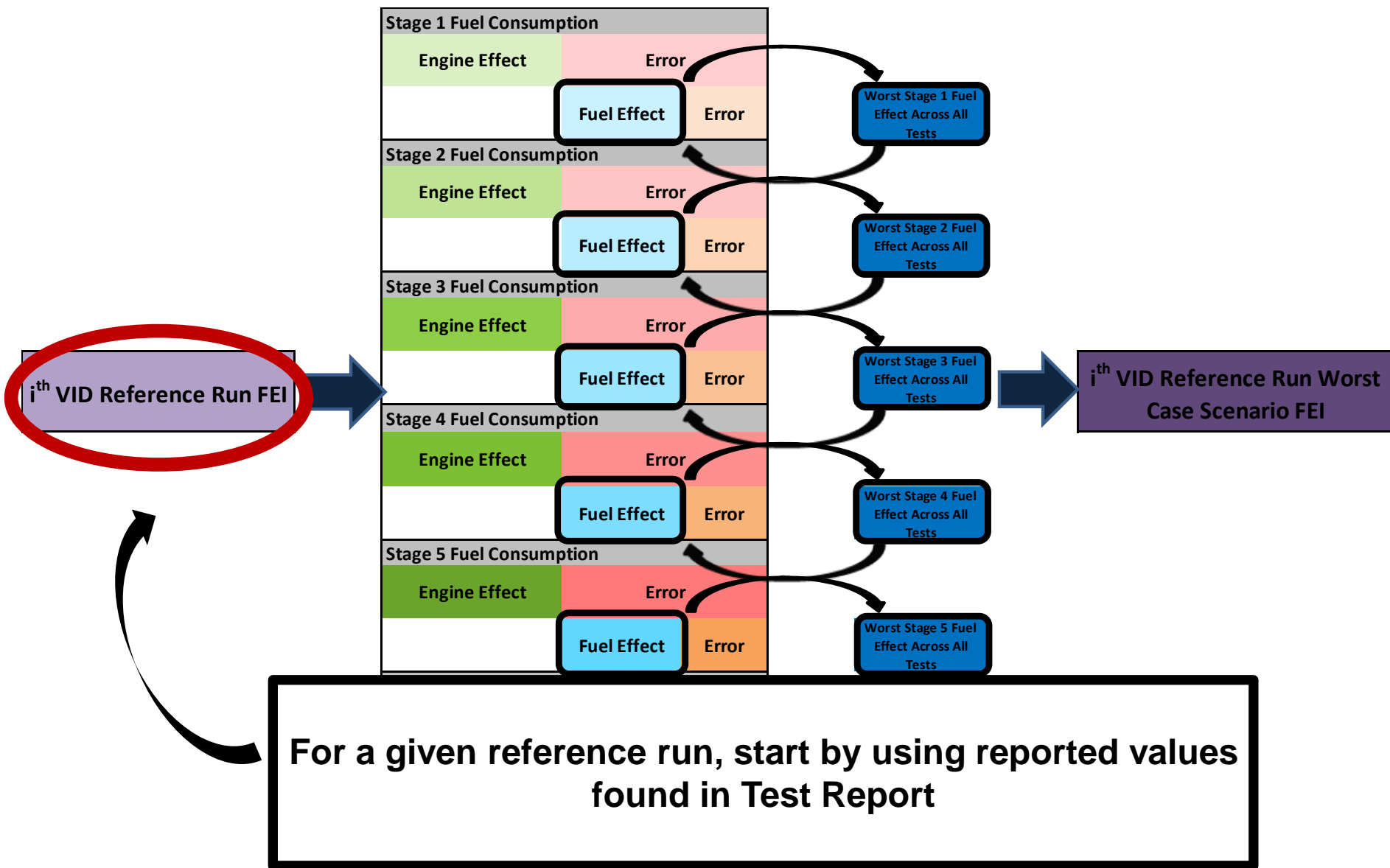


Remaining plots are provided in Appendix

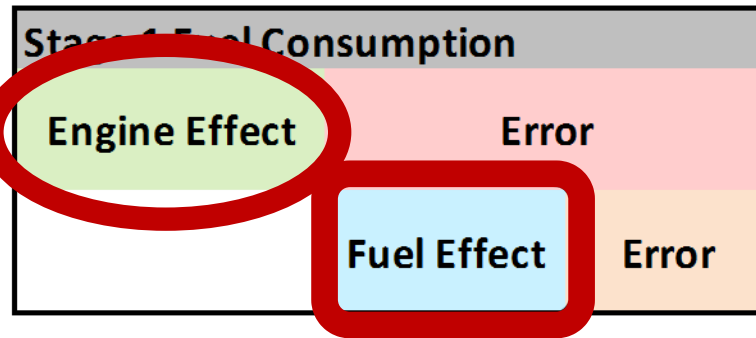
Region

2. FEI modeling based on fuel properties

The approach can be confusing at first glance – will start by using some diagrams for illustration....

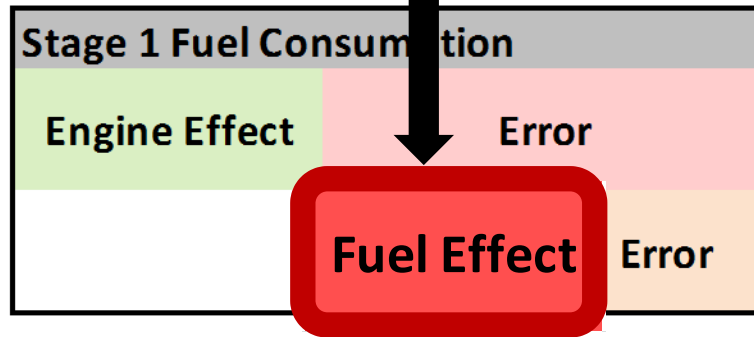


For each stage: using all reference runs, model fuel consumption as a function of $\log(\text{engine hours})$ and engine bias.



What variability in fuel consumption is not explained by the engine?
Use Certificate of Analysis variables to develop models for this.

Find the absolute maximum and minimum fuel consumption impact predicted by the fuel model, across all 392 test runs. Swap the individual run-specific fuel effect with the worst-case scenario fuel effect.



(A more mathematical explanation)

Recall, for general Stage j , $BSFC_j = \frac{(average\ fuel\ flow, \frac{kg}{h})(9549.3)}{(average\ speed, \frac{r}{min})(average\ torque, Nm)}$

Stage j Fuel Consumption

| | | |
|---------------|-------------|-------|
| Engine Effect | Fuel Effect | Error |
|---------------|-------------|-------|

Our approach builds the model: $BSFC_{jk} = \hat{y}_{Engine(Stand),j,k} + \hat{y}_{CofA,j,k} + r_{j,k}$

where

- $j = 1, 2, 3, 4, 5, 6$ denotes the Test Stage
- $k = 1, 2, \dots, 392$ denotes the individual test run
- $\hat{y}_{Engine(Stand),j,k}$ is the predicted engine/stand effect for the j^{th} stage and k^{th} reference run
- $\hat{y}_{CofA,j,k}$ is the predicted fuel effect for the j^{th} stage and k^{th} reference run
- r_{jk} is the unexplained error in $BSFC_{jk}$

and $\hat{y}_{CofA,j,k}$ is modeled using C of A variables:

$$\hat{y}_{CofA,j,k} = \beta_0 + \beta_1 x_1 + \dots + \beta_p x_p$$

(A more mathematical explanation)

For the all 392 reference runs, we then select the minimum predicted fuel effect and maximum predicted fuel effect →

Thus, for each **stage j** and **reference run k**, we use the worst-case fuel effect to calculate final weighted fuel consumption:

| Fuel Batch | Reference Run | Predicted Fuel Effect |
|------------|---------------|--|
| AAA | 1 | $\hat{Y}_{CofA,j,1}$ |
| AAA | 2 | $\hat{Y}_{CofA,j,2} = \hat{Y}_{max,j}$ |
| BBB | 3 | $\hat{Y}_{CofA,j,3}$ |
| BBB | 4 | $\hat{Y}_{CofA,j,4}$ |
| BBB | 5 | $\hat{Y}_{CofA,j,5} = \hat{Y}_{min,j}$ |
| BBB | 6 | $\hat{Y}_{CofA,j,6}$ |
| | ⋮ | |
| RRR | 392 | $\hat{Y}_{CofA,j,392}$ |

$$BSFC_{jk} = \hat{Y}_{Engine(Stand),j,k} + \hat{Y}_{max,j} + r_{j,k} \quad \text{or} \quad BSFC_{jk} = \hat{Y}_{Engine(Stand),j,k} + \hat{Y}_{min,j} + r_{j,k}$$

For example: The max worst-case weighted BLA fuel consumption for kth reference run =

$$\begin{aligned} &0.50 \cdot 21.99 \cdot 0.300 \cdot (\hat{Y}_{Engine(Stand),1,k} + \hat{Y}_{max,1} + r_{1,k}) + \\ &0.50 \cdot 21.99 \cdot 0.032 \cdot (\hat{Y}_{Engine(Stand),2,k} + \hat{Y}_{max,2} + r_{2,k}) + \\ &0.50 \cdot 16.49 \cdot 0.310 \cdot (\hat{Y}_{Engine(Stand),3,k} + \hat{Y}_{max,3} + r_{3,k}) + \\ &0.50 \cdot 1.46 \cdot 0.174 \cdot (\hat{Y}_{Engine(Stand),4,k} + \hat{Y}_{max,4} + r_{4,k}) + \\ &0.50 \cdot 1.46 \cdot 0.011 \cdot (\hat{Y}_{Engine(Stand),5,k} + \hat{Y}_{max,5} + r_{5,k}) + \\ &0.50 \cdot 2.91 \cdot 0.172 \cdot (\hat{Y}_{Engine(Stand),6,k} + \hat{Y}_{max,6} + r_{6,k}) \end{aligned}$$

(A more mathematical explanation)

For the all 392 reference runs, we then select the minimum predicted fuel effect and maximum predicted fuel effect →

Thus, for each **stage j** and **reference run k**, we use the worst-case fuel effect to calculate final weighted fuel consumption:

| Fuel Batch | Reference Run | Predicted Fuel Effect |
|------------|---------------|--|
| AAA | 1 | $\hat{Y}_{CofA,j,1}$ |
| AAA | 2 | $\hat{Y}_{CofA,j,2} = \hat{Y}_{max,j}$ |
| BBB | 3 | $\hat{Y}_{CofA,j,3}$ |
| BBB | 4 | $\hat{Y}_{CofA,j,4}$ |
| BBB | 5 | $\hat{Y}_{CofA,j,5} = \hat{Y}_{min,j}$ |
| BBB | 6 | $\hat{Y}_{CofA,j,6}$ |
| | ⋮ | |
| RRR | 392 | $\hat{Y}_{CofA,j,392}$ |

Stage Length (h)

For example: The maximum worst-case weighted BI A fuel consumption for kth reference run =

$$\begin{aligned}
 & 0.50 \cdot 21.99 \cdot 0.300 \cdot (\hat{Y}_{Engine(Stand),1,k} + \hat{Y}_{max,1} + r_{1,k}) + \\
 & 0.50 \cdot 21.99 \cdot 0.032 \cdot (\hat{Y}_{Engine(Stand),2,k} + \hat{Y}_{max,2} + r_{2,k}) + \\
 & 0.50 \cdot 16.49 \cdot 0.310 \cdot (\hat{Y}_{Engine(Stand),3,k} + \hat{Y}_{max,3} + r_{3,k}) + \\
 & 0.50 \cdot 1.16 \cdot 0.174 \cdot (\hat{Y}_{Engine(Stand),4,k} + \hat{Y}_{max,4} + r_{4,k}) + \\
 & 0.50 \cdot 1.46 \cdot 0.011 \cdot (\hat{Y}_{Engine(Stand),5,k} + \hat{Y}_{max,5} + r_{5,k}) + \\
 & \dots \cdot (\hat{Y}_{Engine(Stand),6,k} + \hat{Y}_{max,6} + r_{6,k})
 \end{aligned}$$

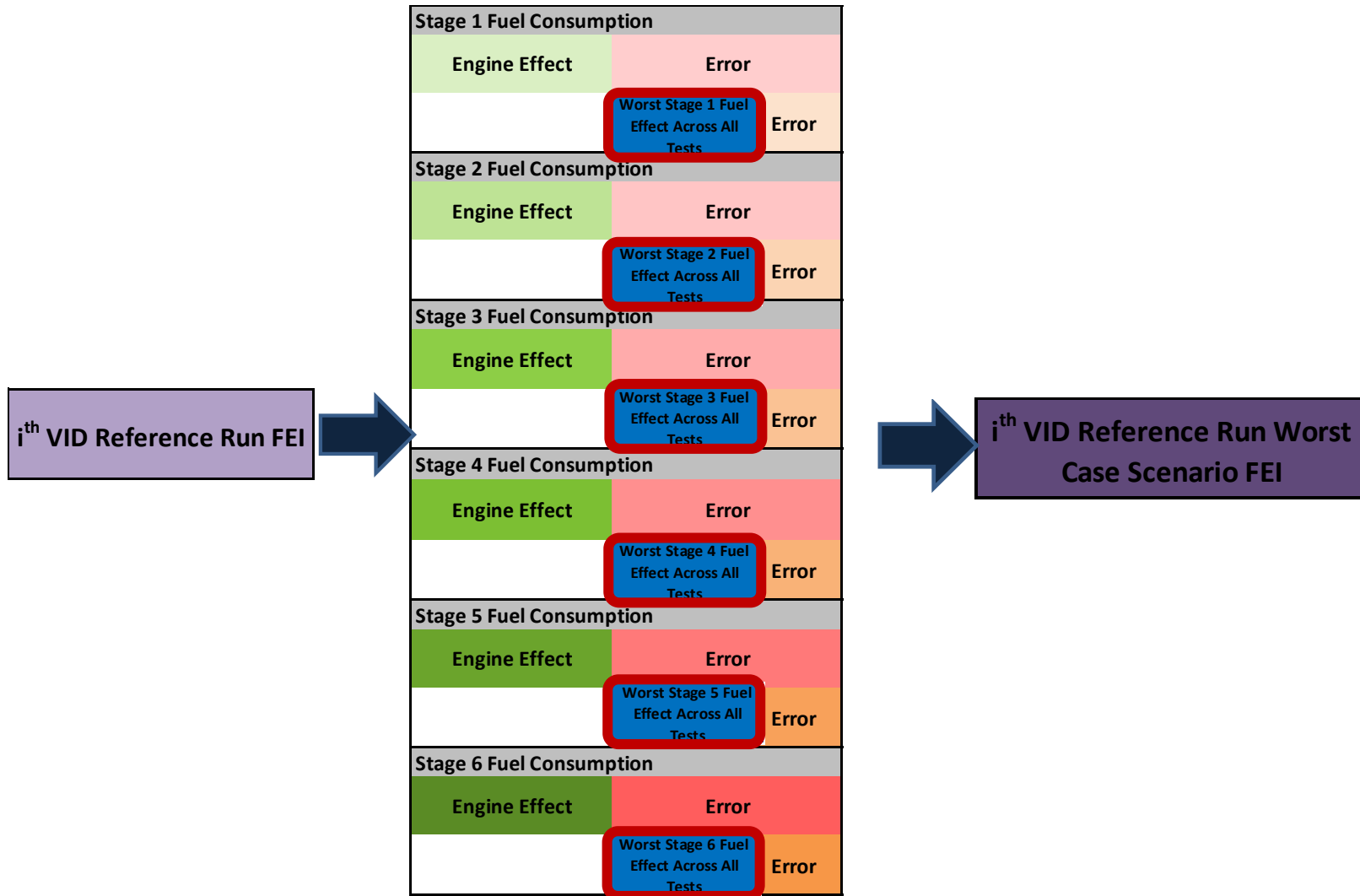
Nominal Power (kW)

Once we substitute worst-case fuel impact for each stage, calculate overall weighted fuel consumption and new FEI value

i^{th} VID Reference Run FEI

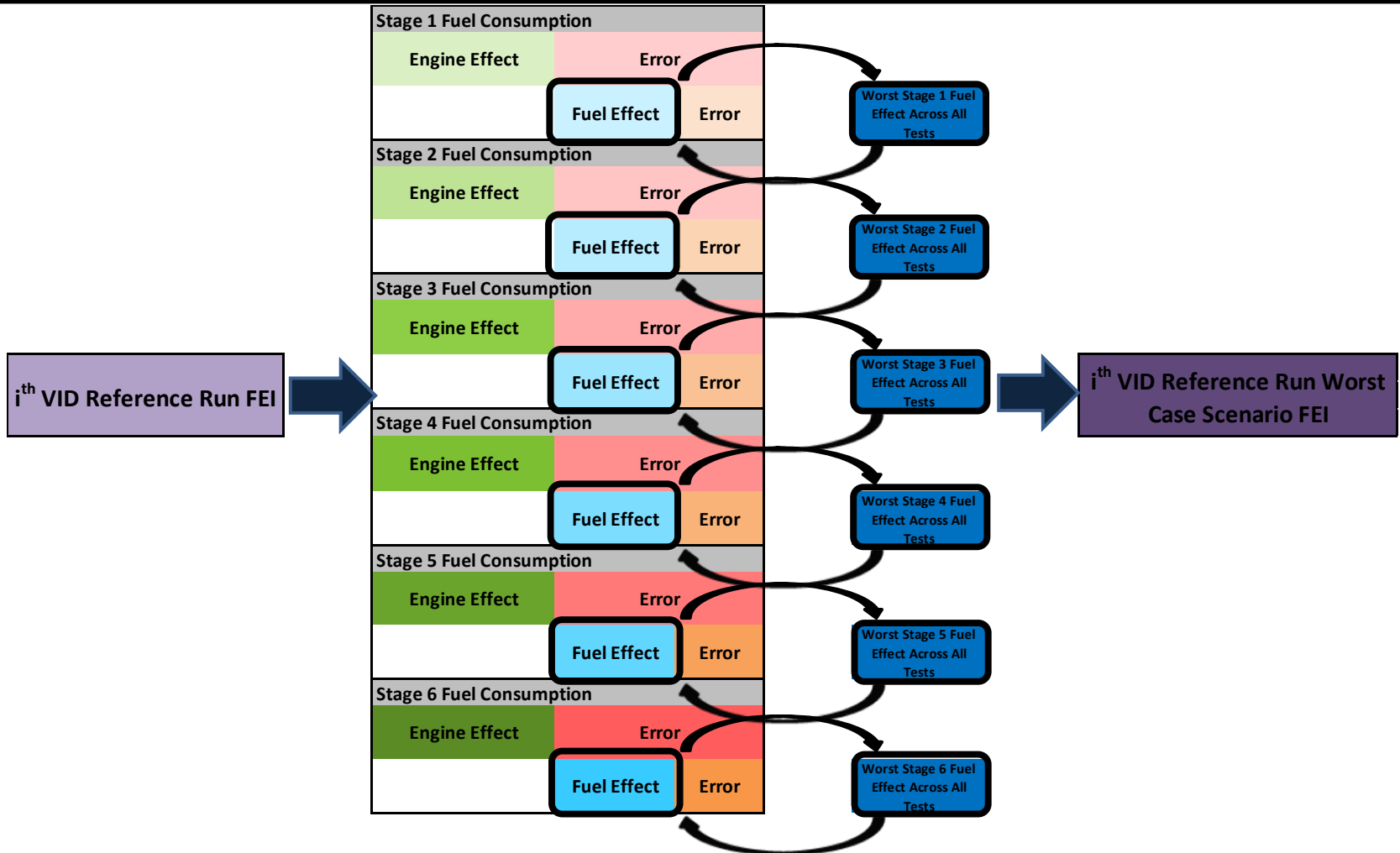
| Stage 1 Fuel Consumption | | |
|--------------------------|-------------|-------|
| Engine Effect | Error | |
| | Fuel Effect | Error |
| Stage 2 Fuel Consumption | | |
| Engine Effect | Error | |
| | Fuel Effect | Error |
| Stage 3 Fuel Consumption | | |
| Engine Effect | Error | |
| | Fuel Effect | Error |
| Stage 4 Fuel Consumption | | |
| Engine Effect | Error | |
| | Fuel Effect | Error |
| Stage 5 Fuel Consumption | | |
| Engine Effect | Error | |
| | Fuel Effect | Error |
| Stage 6 Fuel Consumption | | |
| Engine Effect | Error | |
| | Fuel Effect | Error |

Once we substitute worst-case fuel impact for each stage, calculate overall weighted fuel consumption and new FEI value



Modeling approach

Note: No oil effect modeled since BLB2 and BLA use common baseline oil.



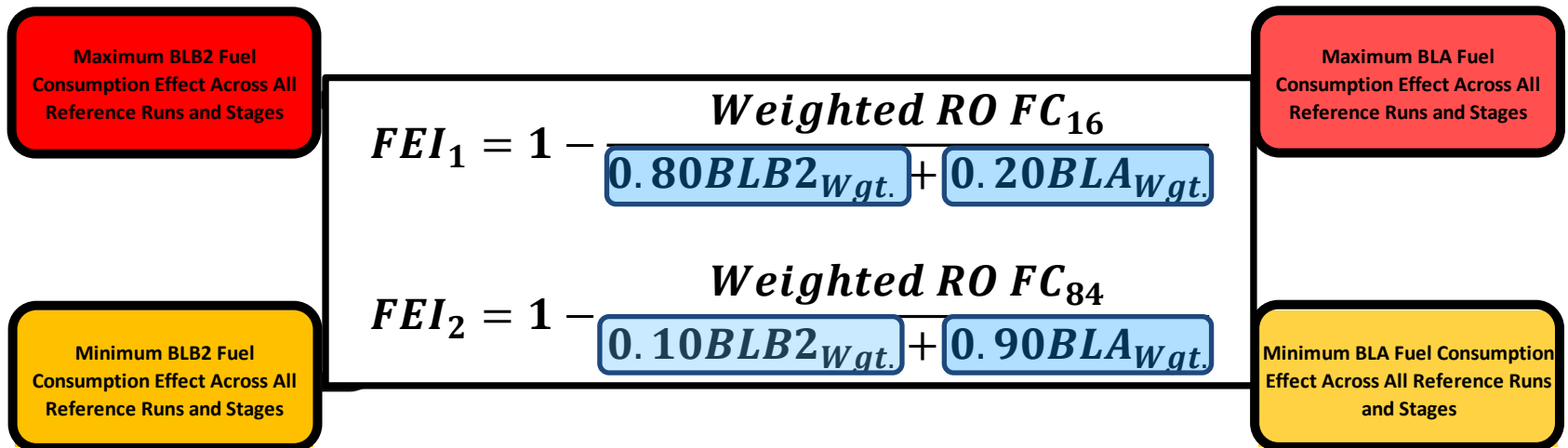
4 Worst Case Scenario Bookends:

Swapping each individual fuel impact with minimum or maximum fuel impact across all reference runs



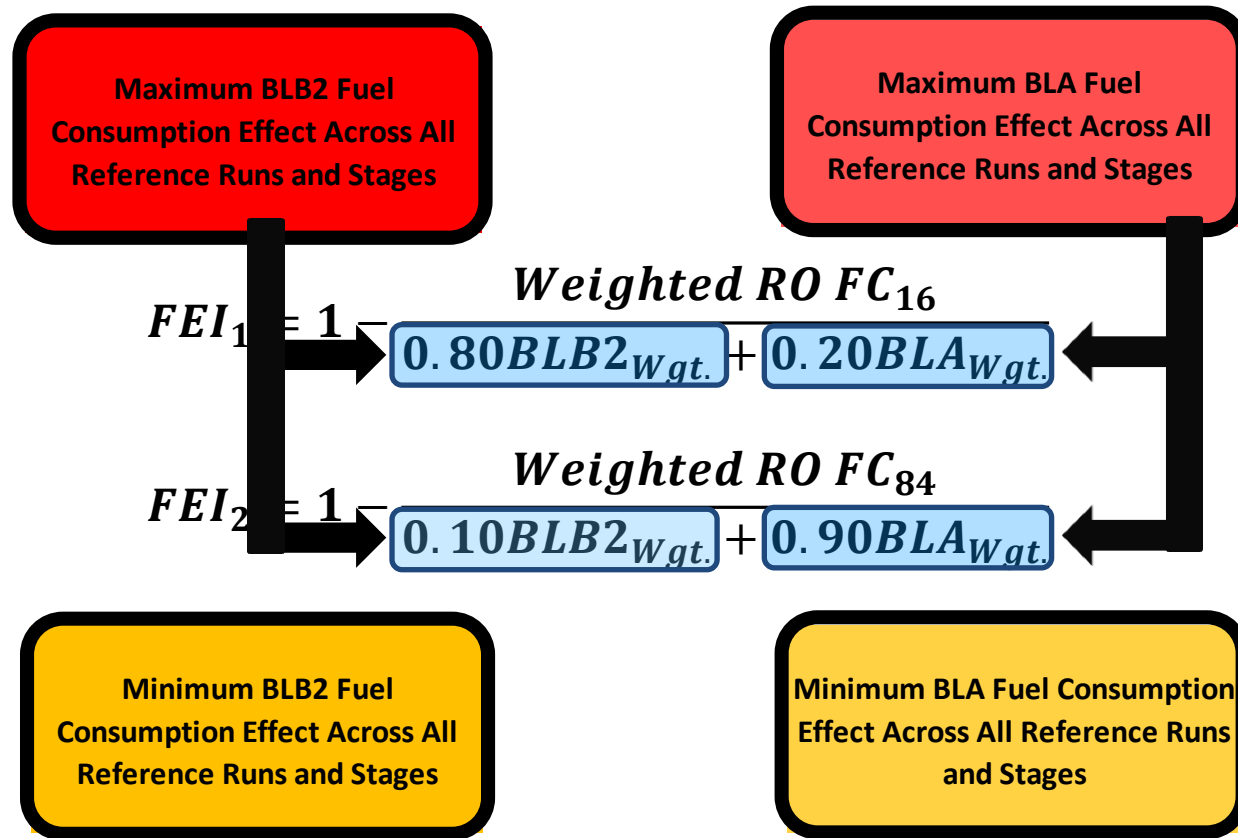
4 Worst Case Scenario Bookends:

Swapping each individual fuel impact with minimum or maximum fuel impact across all reference runs



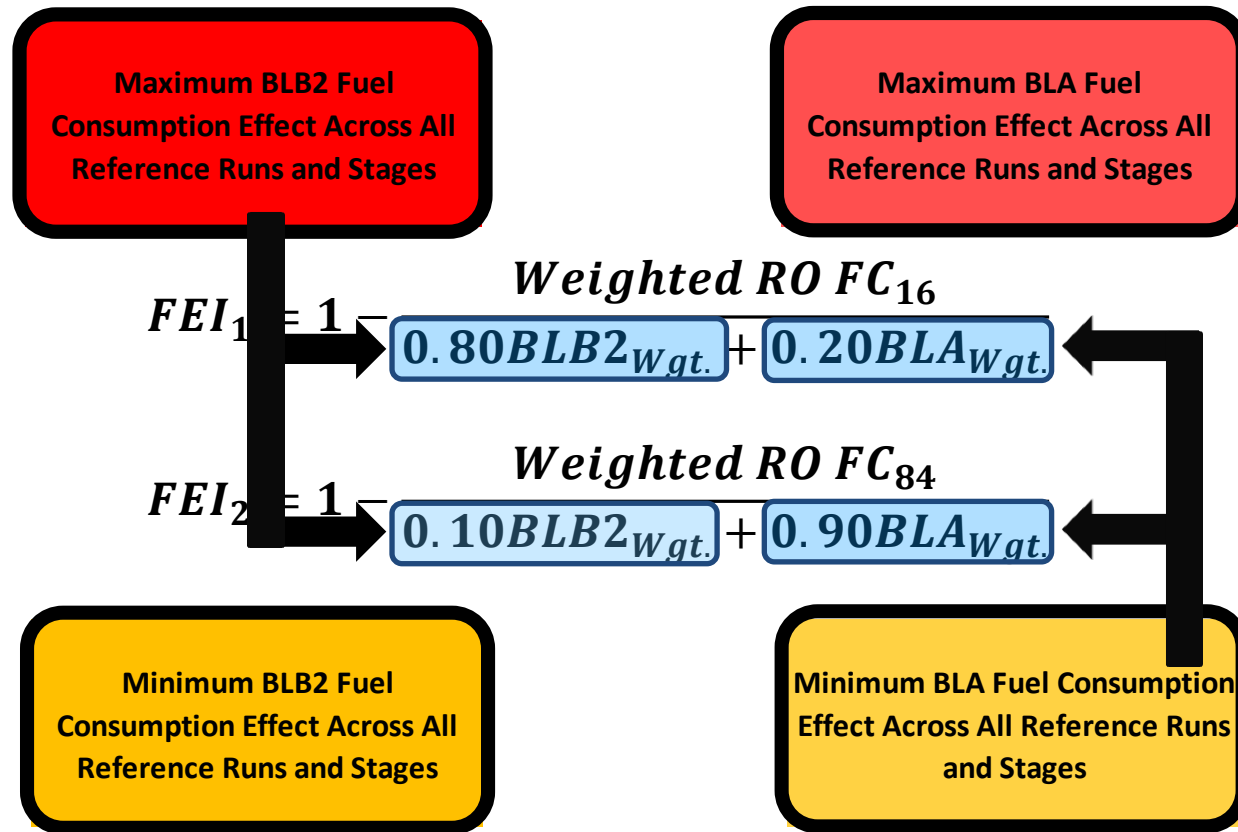
4 Worst Case Scenario Bookends:

Swapping each individual fuel impact with minimum or maximum fuel impact across all reference runs



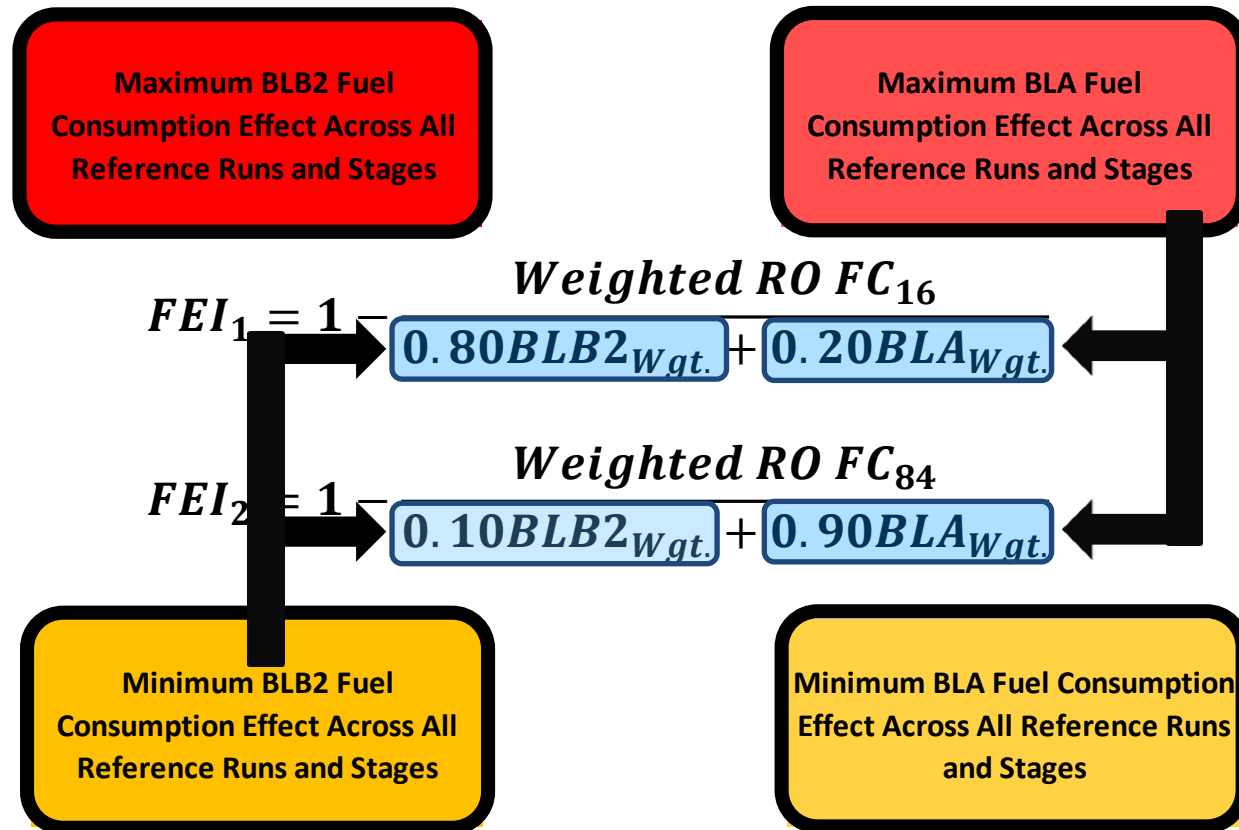
4 Worst Case Scenario Bookends:

Swapping each individual fuel impact with minimum or maximum fuel impact across all reference runs



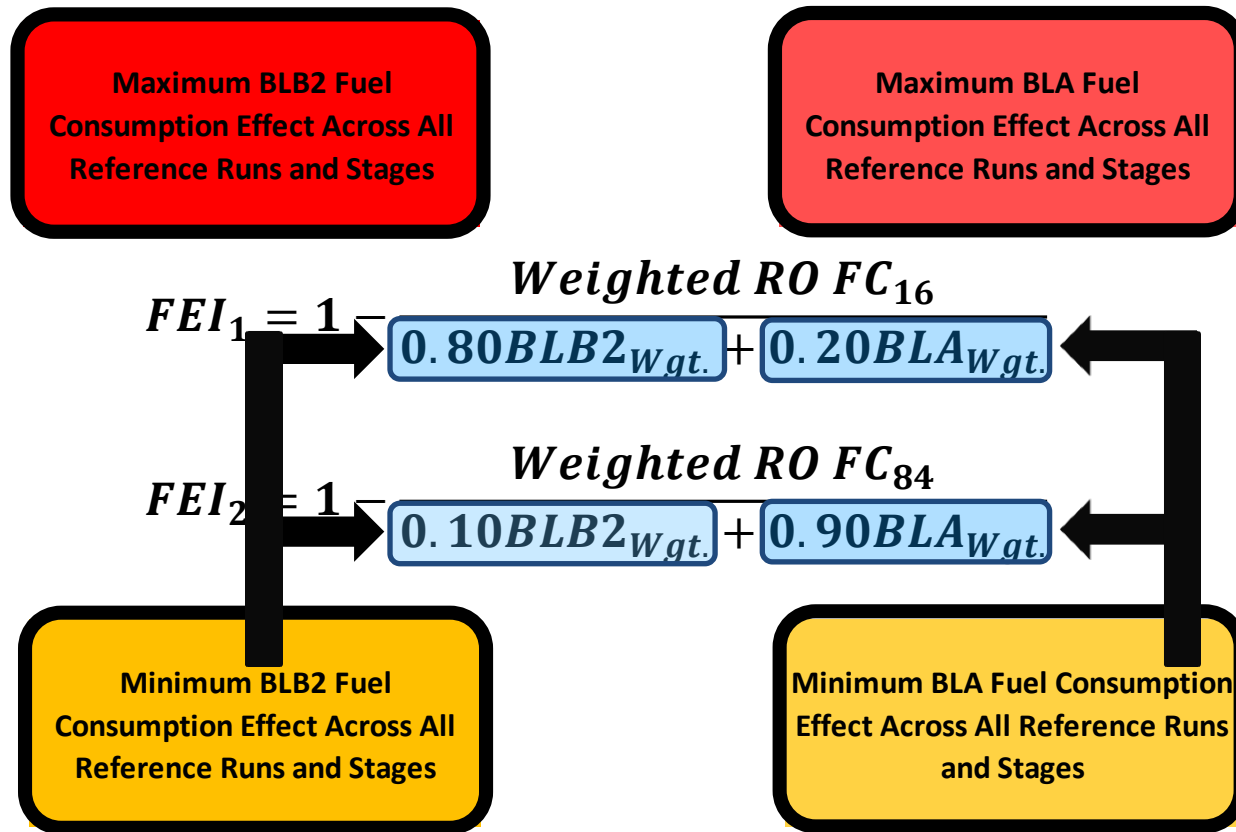
4 Worst Case Scenario Bookends:

Swapping each individual fuel impact with minimum or maximum fuel impact across all reference runs



4 Worst Case Scenario Bookends:

Swapping each individual fuel impact with minimum or maximum fuel impact across all reference runs



Modeling Approach

- ▶ For each stage model, used stepwise regression to determine potential C of A variables to model fuel.
- ▶ Verified these results using Partial Least Squares Modeling
- ▶ Next slide highlights top 5 C of A variables associated with fuel consumption, broken into Stage.
 - ▶ Slide illustrates bivariate linear relationships
 - ▶ Model fit results indicates more success modeling idle portions of the VID fuel consumption

Fuel Consumption - Regression Model Summary

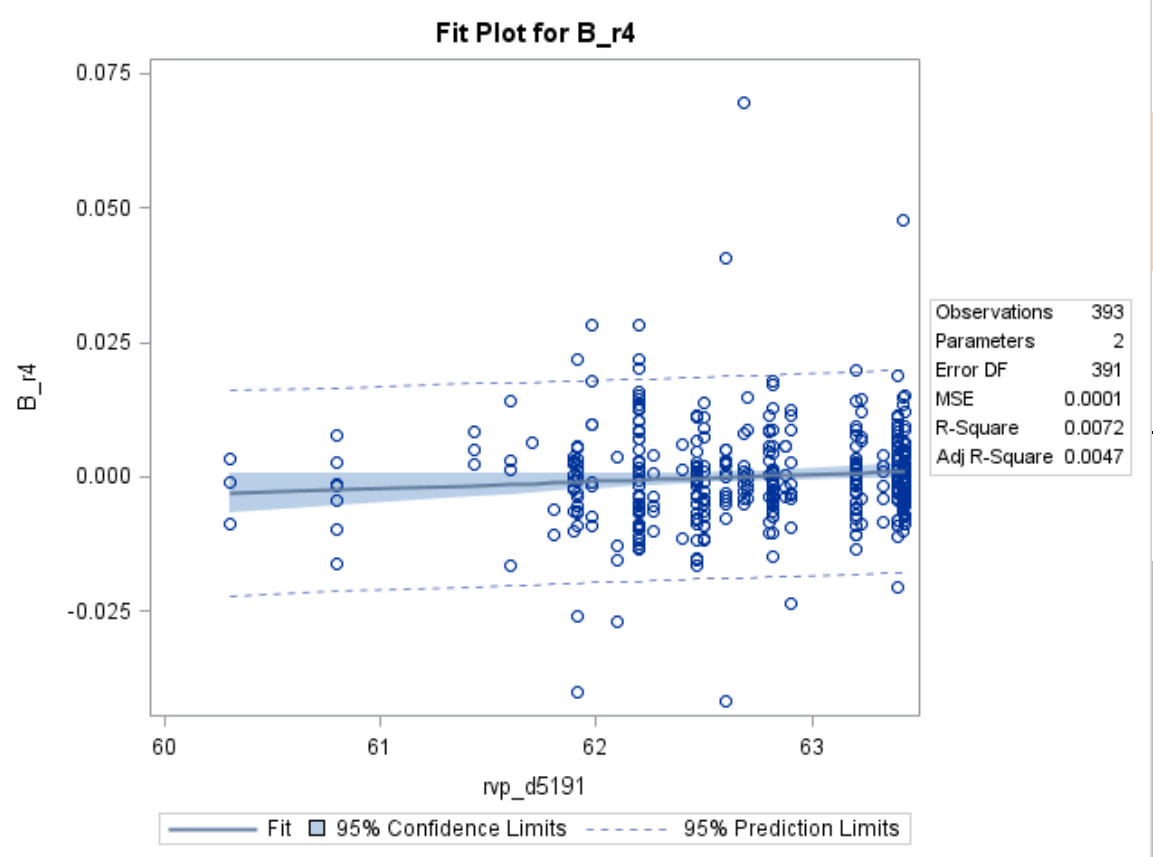
| Y-variable | X-variable | Estimate | StdErr | tValue | P-value | Sig. at 10%? | Y-variable | X-variable | Estimate | StdErr | tValue | P-value | Sig. at 10%? |
|------------|------------|----------|----------|--------|---------|--------------|------------|------------|-----------|----------|--------|---------|--------------|
| B_r1 | particulat | -0.00044 | 0.000303 | -1.46 | 0.1451 | | A_r1 | nhv_d3338 | -6.54E-06 | 4.93E-06 | -1.33 | 0.1852 | |
| B_r1 | rvp_d5191 | 0.000116 | 9.88E-05 | 1.17 | 0.2427 | | A_r1 | saturates | -0.000101 | 7.64E-05 | -1.32 | 0.1863 | |
| B_r1 | saturates | -5.8E-05 | 7.87E-05 | -0.74 | 0.4582 | | A_r1 | dist_70 | -3.55E-05 | 2.73E-05 | -1.30 | 0.1939 | |
| B_r1 | cfactor | -0.01114 | 0.017158 | -0.65 | 0.5166 | | A_r1 | cwt_d3343 | 0.1583875 | 0.122549 | 1.29 | 0.1970 | |
| B_r1 | nhv_d3338 | -3.2E-06 | 5.08E-06 | -0.63 | 0.5266 | | A_r1 | dist_80 | -2.17E-05 | 1.69E-05 | -1.29 | 0.1988 | |
| B_r2 | rvp_d5191 | 0.000188 | 0.000114 | 1.64 | 0.1012 | | A_r2 | washedgum | -0.000458 | 0.000341 | -1.34 | 0.1806 | |
| B_r2 | dist_80 | -2.6E-05 | 2.01E-05 | -1.28 | 0.2015 | | A_r2 | phosphorou | -0.003266 | 0.002469 | -1.32 | 0.1866 | |
| B_r2 | washedgum | -0.00043 | 0.00035 | -1.22 | 0.2236 | | A_r2 | particulat | -0.000372 | 0.000343 | -1.08 | 0.2786 | |
| B_r2 | hyca_ratio | 0.005143 | 0.004251 | 1.21 | 0.2270 | | A_r2 | saturates | -9.6E-05 | 8.88E-05 | -1.08 | 0.2802 | |
| B_r2 | particulat | -0.00038 | 0.000352 | -1.09 | 0.2776 | | A_r2 | cwt_d3343 | 0.150825 | 0.142532 | 1.06 | 0.2906 | |
| B_r3 | particulat | -0.00048 | 0.000382 | -1.25 | 0.2103 | | A_r3 | saturates | -0.000138 | 8.71E-05 | -1.59 | 0.1137 | |
| B_r3 | dist_10 | 3.8E-05 | 4.19E-05 | 0.91 | 0.3659 | | A_r3 | particulat | -0.000515 | 0.000337 | -1.53 | 0.1269 | |
| B_r3 | dist_5 | 3.59E-05 | 4.05E-05 | 0.89 | 0.3761 | | A_r3 | dist_5 | 5.339E-05 | 3.57E-05 | 1.50 | 0.1357 | |
| B_r3 | dist_30 | 3.36E-05 | 3.8E-05 | 0.88 | 0.3782 | | A_r3 | aromatics | 0.0001267 | 8.71E-05 | 1.46 | 0.1463 | |
| B_r3 | dist_ibp | 4.32E-05 | 4.95E-05 | 0.87 | 0.3835 | | A_r3 | sensitivty | 0.0003077 | 0.000223 | 1.38 | 0.1688 | |
| B_r4 | rvp_d5191 | 0.001275 | 0.000757 | 1.68 | 0.0930 | X | A_r4 | density | 0.9273595 | 0.526795 | 1.76 | 0.0791 | X |
| B_r4 | density | 0.884834 | 0.564414 | 1.57 | 0.1178 | | A_r4 | gravity | -0.003746 | 0.002217 | -1.69 | 0.0918 | X |
| B_r4 | sensitivty | -0.00223 | 0.001544 | -1.44 | 0.1495 | | A_r4 | rvp_d5191 | 0.0010467 | 0.000708 | 1.48 | 0.1400 | |
| B_r4 | gravity | -0.00298 | 0.002377 | -1.25 | 0.2108 | | A_r4 | dist_ibp | -0.0003 | 0.000282 | -1.06 | 0.2890 | |
| B_r4 | dist_40 | 0.000293 | 0.000244 | 1.20 | 0.2309 | | A_r4 | hyca_ratio | 0.0273352 | 0.026311 | 1.04 | 0.2995 | |
| B_r5 | dist_ibp | -0.00059 | 0.000303 | -1.95 | 0.0522 | X | A_r5 | density | 1.6032773 | 0.552313 | 2.90 | 0.0039 | X |
| B_r5 | dist_70 | -0.00038 | 0.000217 | -1.74 | 0.0828 | X | A_r5 | gravity | -0.005609 | 0.002331 | -2.41 | 0.0166 | X |
| B_r5 | rvp_d5191 | 0.001313 | 0.000761 | 1.72 | 0.0854 | X | A_r5 | dist_ibp | -0.000681 | 0.000296 | -2.30 | 0.0221 | X |
| B_r5 | density | 0.935419 | 0.567447 | 1.65 | 0.1001 | | A_r5 | rvp_d5191 | 0.0014073 | 0.000746 | 1.89 | 0.0599 | X |
| B_r5 | dist_60 | -0.00044 | 0.000287 | -1.53 | 0.1275 | | A_r5 | dist_5 | -0.000436 | 0.000243 | -1.79 | 0.0740 | X |
| B_r6 | rvp_d5191 | 0.000534 | 0.000373 | 1.43 | 0.1533 | | A_r6 | density | 0.3859392 | 0.250431 | 1.54 | 0.1241 | |
| B_r6 | hwt_e191 | 0.212559 | 0.198855 | 1.07 | 0.2858 | | A_r6 | gravity | -0.001479 | 0.001054 | -1.40 | 0.1614 | |
| B_r6 | hyca_ratio | 0.014756 | 0.013867 | 1.06 | 0.2879 | | A_r6 | rvp_d5191 | 0.0004231 | 0.000336 | 1.26 | 0.2093 | |
| B_r6 | sensitivty | -0.0008 | 0.000761 | -1.05 | 0.2936 | | A_r6 | olefins | 0.0009091 | 0.000833 | 1.09 | 0.2755 | |
| B_r6 | dist_40 | 0.000106 | 0.00012 | 0.88 | 0.3814 | | A_r6 | phosphorou | -0.00751 | 0.007451 | -1.01 | 0.3142 | |

Key: B_r1 = BLB2/3 Stage 1, ..., B_r6 = BLB2/3 Stage 6
A_r1 = BLA Stage 1, ..., A_r6 = BLA Stage 6

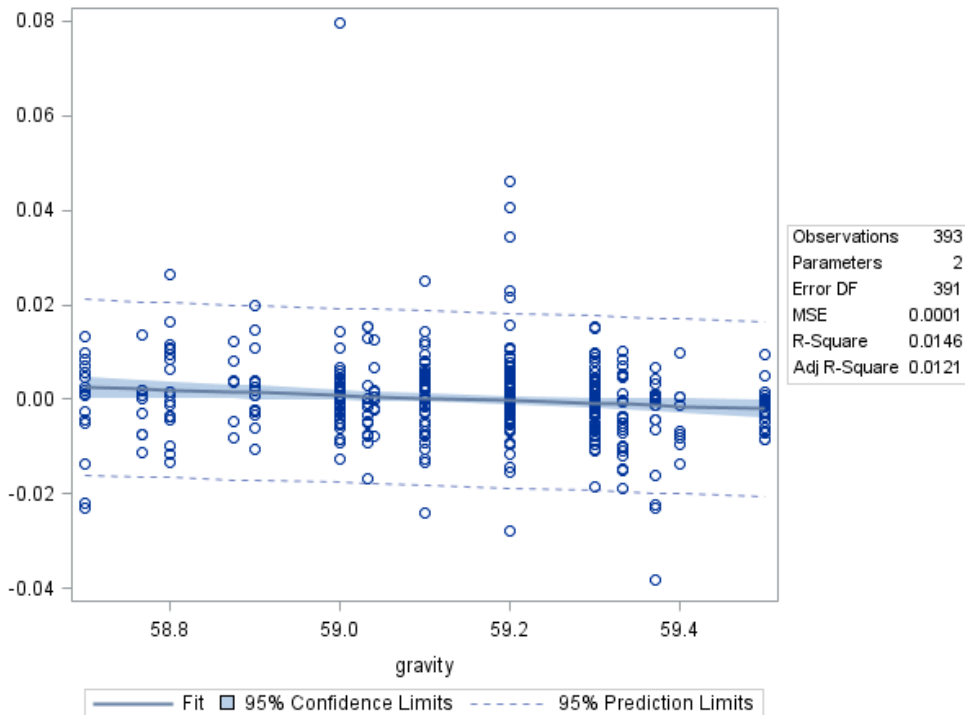
| Y-variable | X-variable | Estimate | StdErr | tValue | P-value | Sig. at 10%? |
|------------|-------------|----------|----------|--------|---------|--------------|
| B_r1 | particulat | -0.00044 | 0.000303 | -1.46 | 0.1451 | |
| B_r1 | rvp_d5191 | 0.000116 | 9.88E-05 | 1.17 | 0.2427 | |
| B_r1 | saturates | -5.8E-05 | 7.87E-05 | -0.74 | 0.4582 | |
| B_r1 | cfactor | -0.01114 | 0.017158 | -0.65 | 0.5166 | |
| B_r1 | nhv_d3338 | -3.2E-06 | 5.08E-06 | -0.63 | 0.5266 | |
| B_r2 | rvp_d5191 | 0.000188 | 0.000114 | 1.64 | 0.1012 | |
| B_r2 | dist_80 | -2.6E-05 | 2.01E-05 | -1.28 | 0.2015 | |
| B_r2 | washedgum | -0.00043 | 0.00035 | -1.22 | 0.2236 | |
| B_r2 | hyca_ratio | 0.005143 | 0.004251 | 1.21 | 0.2270 | |
| B_r2 | particulat | -0.00038 | 0.000352 | -1.09 | 0.2776 | |
| B_r3 | particulat | -0.00048 | 0.000382 | -1.25 | 0.2103 | |
| B_r3 | dist_10 | 3.8E-05 | 4.19E-05 | 0.91 | 0.3659 | |
| B_r3 | dist_5 | 3.59E-05 | 4.05E-05 | 0.89 | 0.3761 | |
| B_r3 | dist_30 | 3.36E-05 | 3.8E-05 | 0.88 | 0.3782 | |
| B_r3 | dist_ibp | 4.32E-05 | 4.95E-05 | 0.87 | 0.3835 | |
| B_r4 | rvp_d5191 | 0.001275 | 0.000757 | 1.68 | 0.0930 | X |
| B_r4 | density | 0.884834 | 0.564414 | 1.57 | 0.1155 | |
| B_r4 | sensitivity | -0.00223 | 0.001544 | -1.44 | 0.1501 | |
| B_r4 | gravity | -0.00298 | 0.002377 | -1.25 | 0.2139 | |
| B_r4 | dist_40 | 0.000293 | 0.000244 | 1.20 | 0.2281 | |
| B_r5 | dist_ibp | -0.00059 | 0.000303 | -1.95 | 0.0504 | |
| B_r5 | dist_70 | -0.00038 | 0.000217 | -1.74 | 0.0831 | |
| B_r5 | rvp_d5191 | 0.001313 | 0.000761 | 1.72 | 0.0871 | |
| B_r5 | density | 0.935419 | 0.567447 | 1.65 | 0.1001 | |
| B_r5 | dist_60 | -0.00044 | 0.000287 | -1.53 | 0.1271 | |
| B_r6 | rvp_d5191 | 0.000534 | 0.000373 | 1.43 | 0.1517 | |
| B_r6 | hwt_e191 | 0.212559 | 0.198855 | 1.07 | 0.2837 | |
| B_r6 | hyca_ratio | 0.014756 | 0.013867 | 1.06 | 0.2871 | |
| B_r6 | sensitivity | -0.0008 | 0.000761 | -1.05 | 0.2921 | |
| B_r6 | dist_40 | 0.000106 | 0.00012 | 0.88 | 0.3761 | |

| Y-variable | X-variable | Estimate | StdErr | tValue | P-value | Sig. at 10%? |
|------------|-------------|-----------|----------|--------|---------|--------------|
| A_r1 | nhv_d3338 | -6.54E-06 | 4.93E-06 | -1.33 | 0.1852 | |
| A_r1 | saturates | -0.000101 | 7.64E-05 | -1.32 | 0.1863 | |
| A_r1 | dist_70 | -3.55E-05 | 2.73E-05 | -1.30 | 0.1939 | |
| A_r1 | cwt_d3343 | 0.1583875 | 0.122549 | 1.29 | 0.1970 | |
| A_r1 | dist_80 | -2.17E-05 | 1.69E-05 | -1.29 | 0.1988 | |
| A_r2 | washedgum | -0.000458 | 0.000341 | -1.34 | 0.1806 | |
| A_r2 | phosphorou | -0.003266 | 0.002469 | -1.32 | 0.1866 | |
| A_r2 | particulat | -0.000372 | 0.000343 | -1.08 | 0.2786 | |
| A_r2 | saturates | -9.6E-05 | 8.88E-05 | -1.08 | 0.2802 | |
| A_r2 | cwt_d3343 | 0.150825 | 0.142532 | 1.06 | 0.2906 | |
| A_r3 | saturates | -0.000138 | 8.71E-05 | -1.59 | 0.1137 | |
| A_r3 | particulat | -0.000515 | 0.000337 | -1.53 | 0.1269 | |
| A_r3 | dist_5 | 5.339E-05 | 3.57E-05 | 1.50 | 0.1357 | |
| A_r3 | aromatics | 0.0001267 | 8.71E-05 | 1.46 | 0.1463 | |
| A_r3 | sensitivity | 0.0003077 | 0.000223 | 1.38 | 0.1688 | |
| A_r4 | density | 0.9273595 | 0.526795 | 1.76 | 0.0791 | X |

Typical small scale trendkey:
analysis is picking up: slight
relationship between BLB2
Stage 4 Fuel Consumption and
rvp_d5191



Fit Plot for A_r5

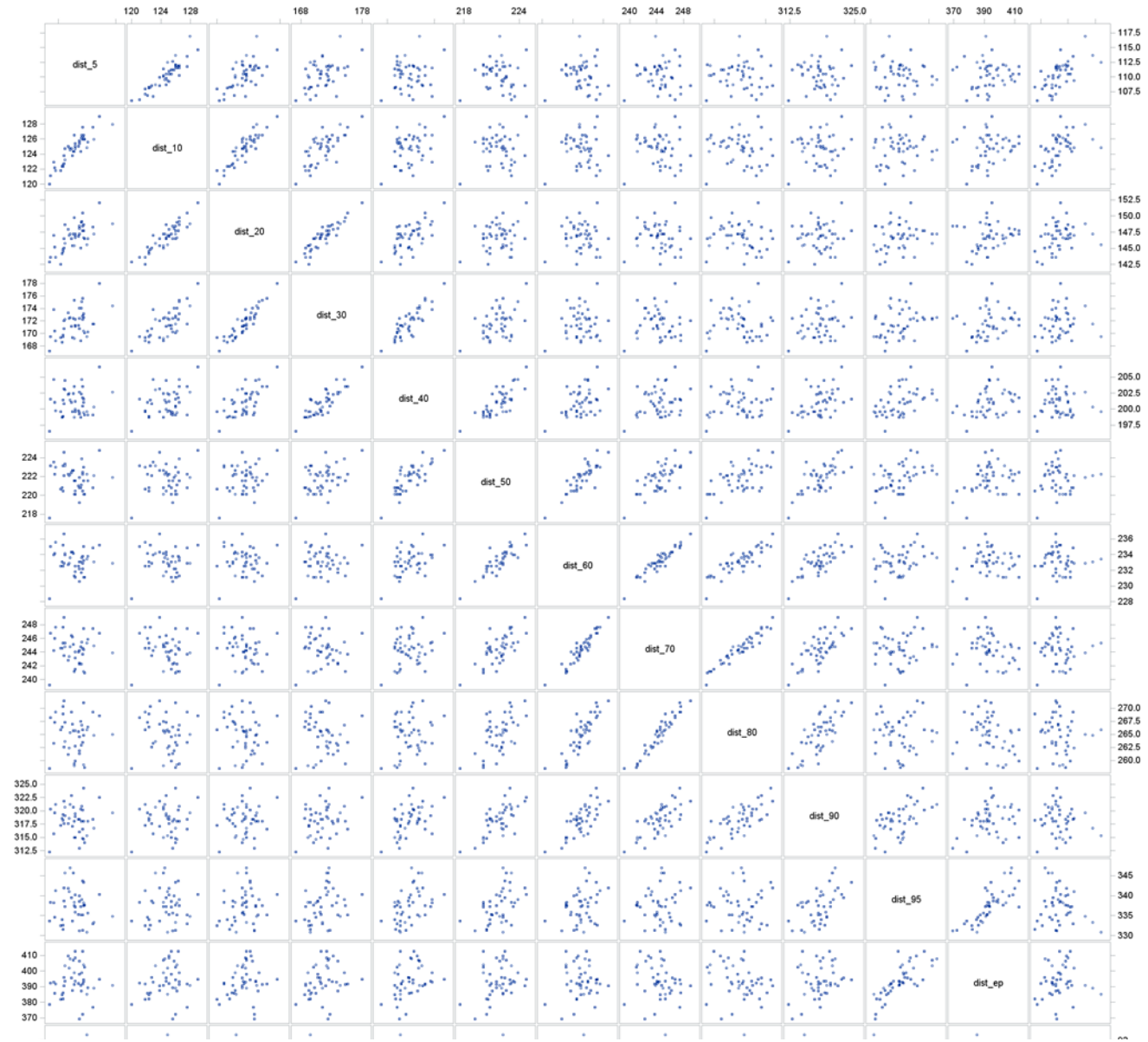


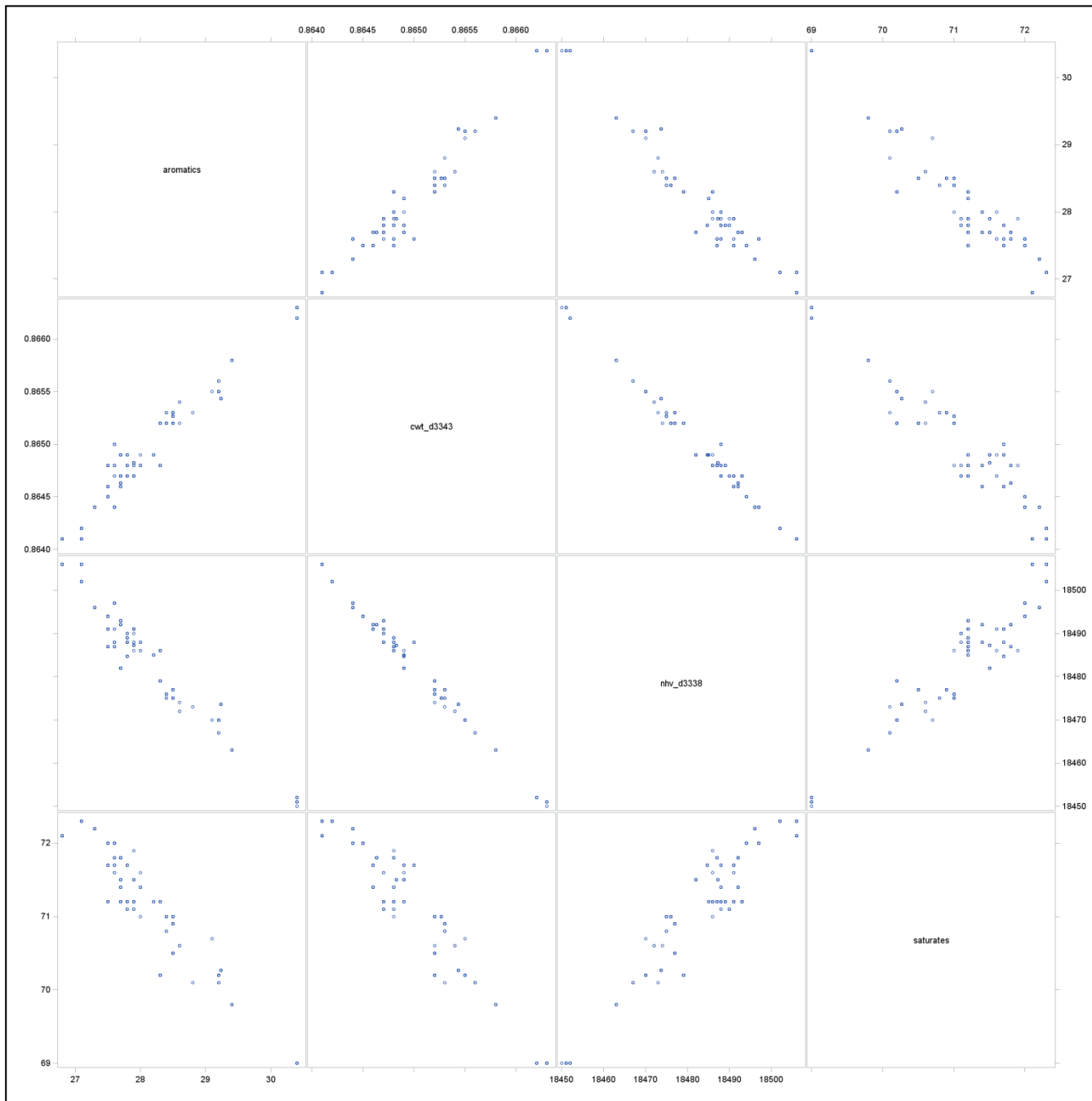
| -variable | X-variable | Estimate | StdErr | tValue | P-value | Sig. at 10%? |
|-----------|-------------|-----------|----------|--------|---------|--------------|
| A_r1 | nhv_d3338 | -6.54E-06 | 4.93E-06 | -1.33 | 0.1852 | |
| A_r1 | saturates | -0.000101 | 7.64E-05 | -1.32 | 0.1863 | |
| A_r1 | dist_70 | -3.55E-05 | 2.73E-05 | -1.30 | 0.1939 | |
| A_r1 | cwt_d3343 | 0.1583875 | 0.122549 | 1.29 | 0.1970 | |
| A_r1 | dist_80 | -2.17E-05 | 1.69E-05 | -1.29 | 0.1988 | |
| A_r2 | washedgum | -0.000458 | 0.000341 | -1.34 | 0.1806 | |
| A_r2 | phosphorou | -0.003266 | 0.002469 | -1.32 | 0.1866 | |
| A_r2 | particulat | -0.000372 | 0.000343 | -1.08 | 0.2786 | |
| A_r2 | saturates | -9.6E-05 | 8.88E-05 | -1.08 | 0.2802 | |
| A_r2 | cwt_d3343 | 0.150825 | 0.142532 | 1.06 | 0.2906 | |
| A_r3 | saturates | -0.000138 | 8.71E-05 | -1.59 | 0.1137 | |
| A_r3 | particulat | -0.000515 | 0.000337 | -1.53 | 0.1269 | |
| A_r3 | dist_5 | 5.339E-05 | 3.57E-05 | 1.50 | 0.1357 | |
| A_r3 | aromatics | 0.0001267 | 8.71E-05 | 1.46 | 0.1463 | |
| A_r3 | sensitivity | 0.0003077 | 0.000223 | 1.38 | 0.1688 | |
| A_r4 | density | 0.9273595 | 0.526795 | 1.76 | 0.0791 | X |
| A_r4 | gravity | -0.003746 | 0.002217 | -1.69 | 0.0918 | X |
| A_r4 | rvp_d5191 | 0.0010467 | 0.000708 | 1.48 | 0.1400 | |
| A_r4 | dist_ibp | -0.0003 | 0.000282 | -1.06 | 0.2890 | |
| A_r4 | hyca_ratio | 0.0273352 | 0.026311 | 1.04 | 0.2995 | |
| A_r5 | density | 1.6032773 | 0.552313 | 2.90 | 0.0039 | X |
| A_r5 | gravity | -0.005609 | 0.002331 | -2.41 | 0.0166 | X |
| A_r5 | dist_ibp | -0.000681 | 0.000296 | -2.30 | 0.0221 | X |
| A_r5 | rvp_d5191 | 0.0014073 | 0.000746 | 1.89 | 0.0599 | X |
| A_r5 | dist_5 | -0.000436 | 0.000243 | -1.79 | 0.0740 | X |
| A_r6 | density | 0.3859392 | 0.250431 | 1.54 | 0.1241 | |
| A_r6 | gravity | -0.001479 | 0.001054 | -1.40 | 0.1614 | |
| A_r6 | rvp_d5191 | 0.0004231 | 0.000336 | 1.26 | 0.2093 | |
| A_r6 | olefins | 0.0009091 | 0.000833 | 1.09 | 0.2755 | |
| A_r6 | phosphorou | -0.00751 | 0.007451 | -1.01 | 0.3142 | |

| | | | | | |
|------|-------------|----------|----------|-------|--------|
| B_r5 | density | 0.935419 | 0.567447 | 1.65 | 0.1001 |
| B_r5 | dist_60 | -0.00044 | 0.000287 | -1.53 | 0.1275 |
| B_r6 | rvp_d5191 | 0.000534 | 0.000373 | 1.43 | 0.1533 |
| B_r6 | hwt_e191 | 0.212559 | 0.198855 | 1.07 | 0.2858 |
| B_r6 | hyca_ratio | 0.014756 | 0.013867 | 1.06 | 0.2879 |
| B_r6 | sensitivity | -0.0008 | 0.000761 | -1.05 | 0.2936 |
| B_r6 | dist_40 | 0.000106 | 0.00012 | 0.88 | 0.3814 |

Key: B_r1 = BLB2/3 Stage 1, ..., B_r6 = BLB2/3 Stage 6
 A_r1 = BLA Stage 1, ..., A_r6 = BLA Stage 6

Typical small scale trend analysis is picking up: slight relationship between BLA Stage 5 Fuel Consumption and gravity





| Y-variable | X-variable | Estimate | StdErr | tValue | P-value | Sig. at 10%? | Y-variable | X-variable | Estimate | StdErr | tValue | P-value | Sig. at 10%? | | | | | | |
|--|------------|----------|----------|--------|---------|--------------|------------|------------|-----------|----------|--------|---------|--------------|--|--|--|--|--|--|
| B_r1 | particulat | -0.00044 | 0.000303 | -1.46 | 0.1451 | | A_r1 | nhv_d3338 | -6.54E-06 | 4.93E-06 | -1.33 | 0.1852 | | | | | | | |
| B_r1 | rvp_d5191 | 0.000116 | 9.88E-05 | 1.17 | 0.2427 | | A_r1 | saturates | -0.000101 | 7.64E-05 | -1.32 | 0.1863 | | | | | | | |
| B_r1 | saturates | -5.8E-05 | 7.87E-05 | -0.74 | 0.4582 | | A_r1 | dist_70 | -3.55E-05 | 2.73E-05 | -1.30 | 0.1939 | | | | | | | |
| B_r1 | cfactor | -0.01114 | 0.017158 | -0.65 | 0.5166 | | A_r1 | cwt_d3343 | 0.1583875 | 0.122549 | 1.29 | 0.1970 | | | | | | | |
| B_r1 | nhv_d3338 | -3.2E-06 | 5.08E-06 | -0.63 | 0.5266 | | A_r1 | dist_80 | -2.17E-05 | 1.69E-05 | -1.29 | 0.1988 | | | | | | | |
| <p align="center">BLB2 Stage 2: aromatics; rvp_d5191; washedgum</p> | | | | | | | A_r2 | washedgum | -0.000458 | 0.000341 | -1.34 | 0.1806 | | | | | | | |
| | | | | | | | A_r2 | phosphorou | -0.003266 | 0.002469 | -1.32 | 0.1866 | | | | | | | |
| | | | | | | | A_r2 | particulat | -0.000372 | 0.000343 | -1.08 | 0.2786 | | | | | | | |
| | | | | | | | A_r2 | saturates | -9.6E-05 | 8.88E-05 | -1.08 | 0.2802 | | | | | | | |
| | | | | | | | A_r2 | cwt_d3343 | 0.150825 | 0.142532 | 1.06 | 0.2906 | | | | | | | |
| | | | | | | | A_r3 | saturates | -0.000138 | 8.71E-05 | -1.59 | 0.1137 | | | | | | | |
| | | | | | | | A_r3 | particulat | -0.000515 | 0.000337 | -1.53 | 0.1269 | | | | | | | |
| | | | | | | | A_r3 | dist_5 | 5.339E-05 | 3.57E-05 | 1.50 | 0.1357 | | | | | | | |
| | | | | | | B_r3 | dist_10 | 3.8E-05 | 4.19E-05 | 0.91 | 0.3659 | | | | | | | | |
| | | | | | | B_r3 | dist_5 | 3.59E-05 | 4.05E-05 | 0.89 | 0.3761 | | | | | | | | |

**BLB2 Stage 4:
density; sensitivity; rvp_d5191**

**BLA Stage 4:
density; rvp_d5191**

**BLB2 Stage 5:
dist_80; gravity; dist_ibp; hwt_e191**

**BLA Stage 5:
density; sensitivity; rvp_d5191; phosphorous;
washedgum**

| | | | | | | |
|------|-------------|----------|----------|-------|--------|--|
| B_r6 | hyca_ratio | 0.014756 | 0.013867 | 1.06 | 0.2879 | |
| B_r6 | sensitivity | -0.0008 | 0.000761 | -1.05 | 0.2936 | |
| B_r6 | dist_40 | 0.000106 | 0.00012 | 0.88 | 0.3814 | |

| | | | | | | |
|------|------------|-----------|----------|-------|--------|--|
| A_r6 | rvp_d5191 | 0.0007251 | 0.000550 | 1.28 | 0.2055 | |
| A_r6 | olefins | 0.0009091 | 0.000833 | 1.09 | 0.2755 | |
| A_r6 | phosphorou | -0.00751 | 0.007451 | -1.01 | 0.3142 | |

Key: B_r1 = BLB2/3 Stage 1, B_r6 = BLB2/3 Stage 6
A_r1 = BLA Stage 1, A_r6 = BLA Stage 6

Final Models



Passion for Solutions™

Final Models



BLB2 – Stage 2

| Analysis of Variance | | | | | |
|----------------------|-----|----------------|-------------|---------|--------|
| Source | DF | Sum of Squares | Mean Square | F Value | Pr > F |
| Model | 3 | 0.00001500 | 0.00000500 | 2.39 | 0.0682 |
| Error | 387 | 0.00080918 | 0.00000209 | | |
| Corrected Total | 390 | 0.00082418 | | | |

| | | | |
|----------------|-------------|----------|--------|
| Root MSE | 0.00145 | R-Square | 0.0182 |
| Dependent Mean | -0.00001624 | Adj R-Sq | 0.0106 |
| Coeff Var | -8903.87614 | | |

| Parameter Estimates | | | | | | | |
|---------------------|-----------|----|--------------------|----------------|---------|---------|--------------------|
| Variable | Label | DF | Parameter Estimate | Standard Error | t Value | Pr > t | Variance Inflation |
| Intercept | Intercept | 1 | -0.01993 | 0.00840 | -2.37 | 0.0182 | 0 |
| aromatics | | 1 | 0.00013731 | 0.00009576 | 1.43 | 0.1524 | 1.09331 |
| rvp_d5191 | rvp_d5191 | 1 | 0.00026015 | 0.00012008 | 2.17 | 0.0309 | 1.08842 |
| washedgum | | 1 | -0.00070967 | 0.00037413 | -1.90 | 0.0586 | 1.13337 |

BLB2 – Stage 4

| Analysis of Variance | | | | | |
|----------------------|-----|----------------|-------------|---------|--------|
| Source | DF | Sum of Squares | Mean Square | F Value | Pr > F |
| Model | 3 | 0.00075832 | 0.00025277 | 2.77 | 0.0415 |
| Error | 387 | 0.03532 | 0.00009127 | | |
| Corrected Total | 390 | 0.03608 | | | |

| | | | |
|----------------|-------------|----------|--------|
| Root MSE | 0.00955 | R-Square | 0.0210 |
| Dependent Mean | -0.00001297 | Adj R-Sq | 0.0134 |
| Coeff Var | -73657 | | |

| Parameter Estimates | | | | | | | |
|---------------------|-------------|----|--------------------|----------------|---------|---------|--------------------|
| Variable | Label | DF | Parameter Estimate | Standard Error | t Value | Pr > t | Variance Inflation |
| Intercept | Intercept | 1 | -0.88210 | 0.42980 | -2.05 | 0.0408 | 0 |
| density | density | 1 | 1.10411 | 0.57642 | 1.92 | 0.0562 | 1.03692 |
| sensitivity | sensitivity | 1 | -0.00266 | 0.00157 | -1.69 | 0.0925 | 1.03703 |
| rvp_d5191 | rvp_d5191 | 1 | 0.00136 | 0.00076132 | 1.79 | 0.0750 | 1.00226 |

BLB2 – Stage 5



BLA – Stage 4

| Analysis of Variance | | | | | |
|----------------------|-----|----------------|-------------|---------|--------|
| Source | DF | Sum of Squares | Mean Square | F Value | Pr > F |
| Model | 2 | 0.00043493 | 0.00021746 | 2.72 | 0.0671 |
| Error | 388 | 0.03101 | 0.00007992 | | |
| Corrected Total | 390 | 0.03144 | | | |

| | | | |
|----------------|------------|----------|--------|
| Root MSE | 0.00894 | R-Square | 0.0138 |
| Dependent Mean | 0.00000184 | Adj R-Sq | 0.0087 |
| Coeff Var | 486308 | | |

| Parameter Estimates | | | | | | | |
|---------------------|-----------|----|--------------------|----------------|---------|---------|--------------------|
| Variable | Label | DF | Parameter Estimate | Standard Error | t Value | Pr > t | Variance Inflation |
| Intercept | Intercept | 1 | -0.78016 | 0.39709 | -1.96 | 0.0502 | 0 |
| density | density | 1 | 0.95965 | 0.52992 | 1.81 | 0.0709 | 1.00087 |
| rvp_d5191 | rvp_d5191 | 1 | 0.00108 | 0.00071190 | 1.52 | 0.1285 | 1.00087 |

BLA – Stage 5

| Analysis of Variance | | | | | |
|----------------------|-----|----------------|-------------|---------|--------|
| Source | DF | Sum of Squares | Mean Square | F Value | Pr > F |
| Model | 5 | 0.00213 | 0.00042613 | 4.99 | 0.0002 |
| Error | 385 | 0.03285 | 0.00008532 | | |
| Corrected Total | 390 | 0.03498 | | | |

| | | | |
|----------------|-------------|----------|--------|
| Root MSE | 0.00924 | R-Square | 0.0609 |
| Dependent Mean | -0.00001671 | Adj R-Sq | 0.0487 |
| Coeff Var | -55280 | | |

| Parameter Estimates | | | | | | | |
|---------------------|-------------|----|--------------------|----------------|---------|---------|--------------------|
| Variable | Label | DF | Parameter Estimate | Standard Error | t Value | Pr > t | Variance Inflation |
| Intercept | Intercept | 1 | -1.65963 | 0.42417 | -3.91 | 0.0001 | 0 |
| density | density | 1 | 2.10360 | 0.56754 | 3.71 | 0.0002 | 1.07536 |
| phosphorou | | 1 | -0.03234 | 0.01669 | -1.94 | 0.0534 | 1.05707 |
| rvp_d5191 | rvp_d5191 | 1 | 0.00210 | 0.00076111 | 2.76 | 0.0060 | 1.07160 |
| sensitivity | sensitivity | 1 | -0.00351 | 0.00156 | -2.26 | 0.0246 | 1.08442 |
| washedgum | | 1 | -0.00584 | 0.00233 | -2.51 | 0.0126 | 1.07891 |

Best fuel model overall is for BLA Stage 5 Fuel consumption, only 6% R² value:

Dependent Variable: BSFC_BLBA_S5

ENGINE/STAND Model

| Source | DF | Sum of Squares | Mean Square | F Value | Pr > F |
|-----------------|-----|----------------|-------------|---------|--------|
| Model | 82 | 0.09924494 | 0.00121030 | 10.89 | <.0001 |
| Error | 315 | 0.03502284 | 0.00011118 | | |
| Corrected Total | 397 | 0.13426778 | | | |

| R-Square | Coeff Var | Root MSE | BSFC_BLBA_S5 Mean |
|----------|-----------|----------|-------------------|
| 0.739157 | 11.74404 | 0.010544 | 0.897848 |

| Source | DF | Type I SS | Mean Square | F Value | Pr > F |
|----------------|----|------------|-------------|---------|--------|
| log_hrs | 1 | 0.00237416 | 0.00237416 | 21.35 | <.0001 |
| ENGNO(LTMSLAB) | 81 | 0.09687078 | 0.00119594 | 10.76 | <.0001 |

| Source | DF | Type III SS | Mean Square | F Value | Pr > F |
|----------------|----|-------------|-------------|---------|--------|
| log_hrs | 1 | 0.00529034 | 0.00529034 | 47.58 | <.0001 |
| ENGNO(LTMSLAB) | 81 | 0.09687078 | 0.00119594 | 10.76 | <.0001 |

Dependent Variable: A_r5

| | |
|--|-----|
| Number of Observations Read | 392 |
| Number of Observations Used | 391 |
| Number of Observations with Missing Values | 1 |

FUEL Model

| Source | DF | Sum of Squares | Mean Square | F Value | Pr > F |
|-----------------|-----|----------------|-------------|---------|--------|
| Model | 1 | 0.0001671 | 0.0001671 | 4.99 | 0.0002 |
| Error | 390 | 0.008532 | 0.0000219 | | |
| Corrected Total | 390 | 0.03498 | | | |

| | | | |
|----------------|-------------|----------|--------|
| Root MSE | 0.00464 | R-Square | 0.0609 |
| Dependent Mean | -0.00001771 | Adj R-Sq | 0.0487 |
| Coeff Var | -55280 | | |

| Variable | Label | DF | Parameter Estimate | Standard Error | t Value | Pr > t | Variance Inflation |
|------------|------------|----|--------------------|----------------|---------|---------|--------------------|
| Intercept | Intercept | 1 | -1.65963 | 0.42417 | -3.91 | 0.0001 | 0 |
| density | density | 1 | 2.10360 | 0.56754 | 3.71 | 0.0002 | 1.07536 |
| phosphorou | | 1 | -0.03234 | 0.01669 | -1.94 | 0.0534 | 1.05707 |
| rvp_d5191 | rvp_d5191 | 1 | 0.00210 | 0.00076111 | 2.76 | 0.0060 | 1.07160 |
| sensitivty | sensitivty | 1 | -0.00351 | 0.00156 | -2.26 | 0.0246 | 1.08442 |
| washedgum | | 1 | -0.00584 | 0.00233 | -2.51 | 0.0126 | 1.07891 |

R² Engine: 73.9157%

Unexplained Variation: 26.0843%

OF Unexplained Variation: 6.09% Explained by fuel

6.09% x 26.0843% = 1.6% Total Variation in BLA Stage 5 Fuel consumption explained by C of A

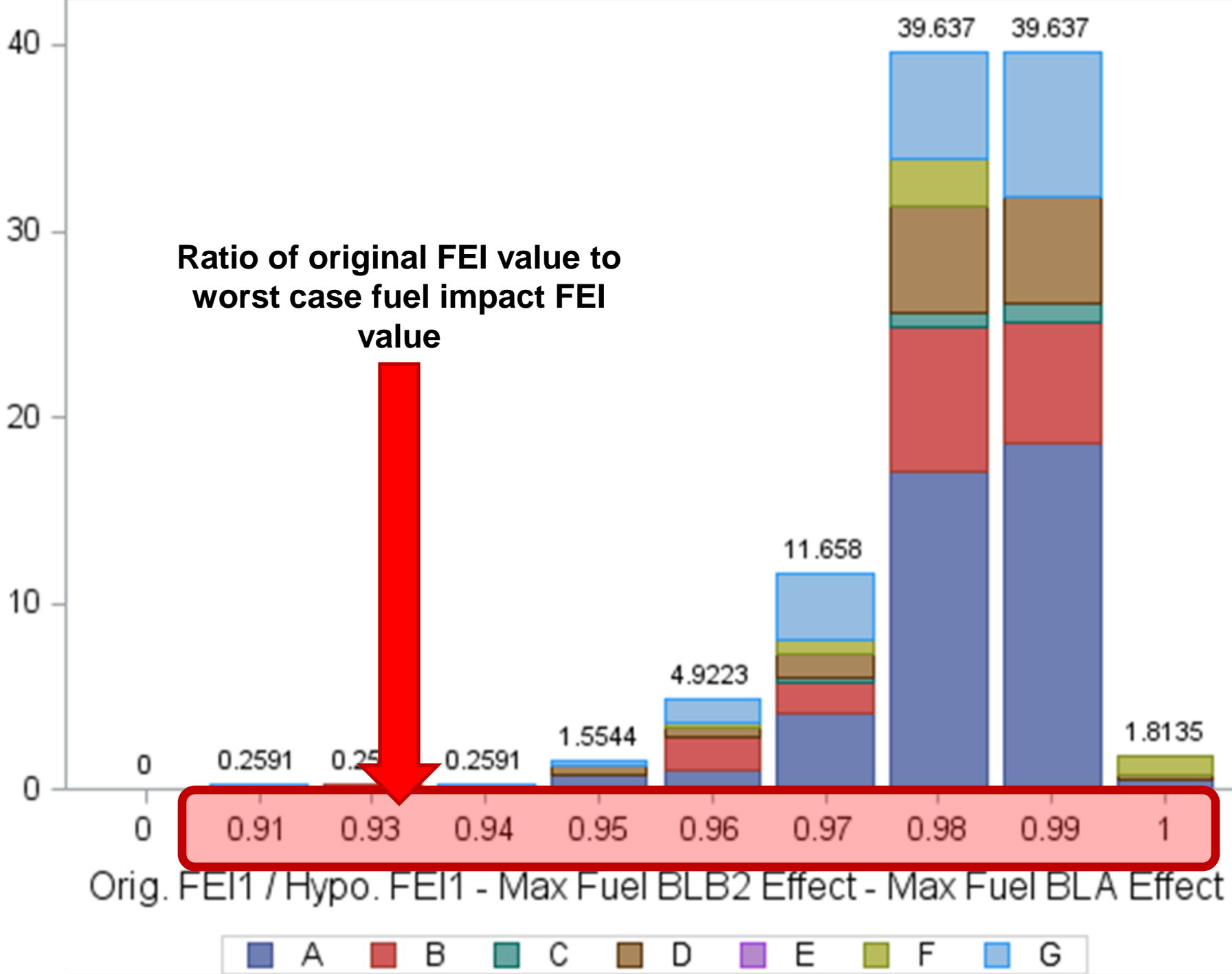
Modeling approach

Following slides summarize the worst-case scenario results. Keep in mind:

📌 This really is the worst case-scenario. For example: we might apply the predicted fuel impact from a 2009 fuel batch to a 2013 test run, even though fuel batches are sequential and exhibit a fair amount of batch-to-batch consistency.

Brief coaching on how to interpret results...

Percent of Total Frequency



For example....

Mid-2013, LTMSLAB G ran a 542 RO test.

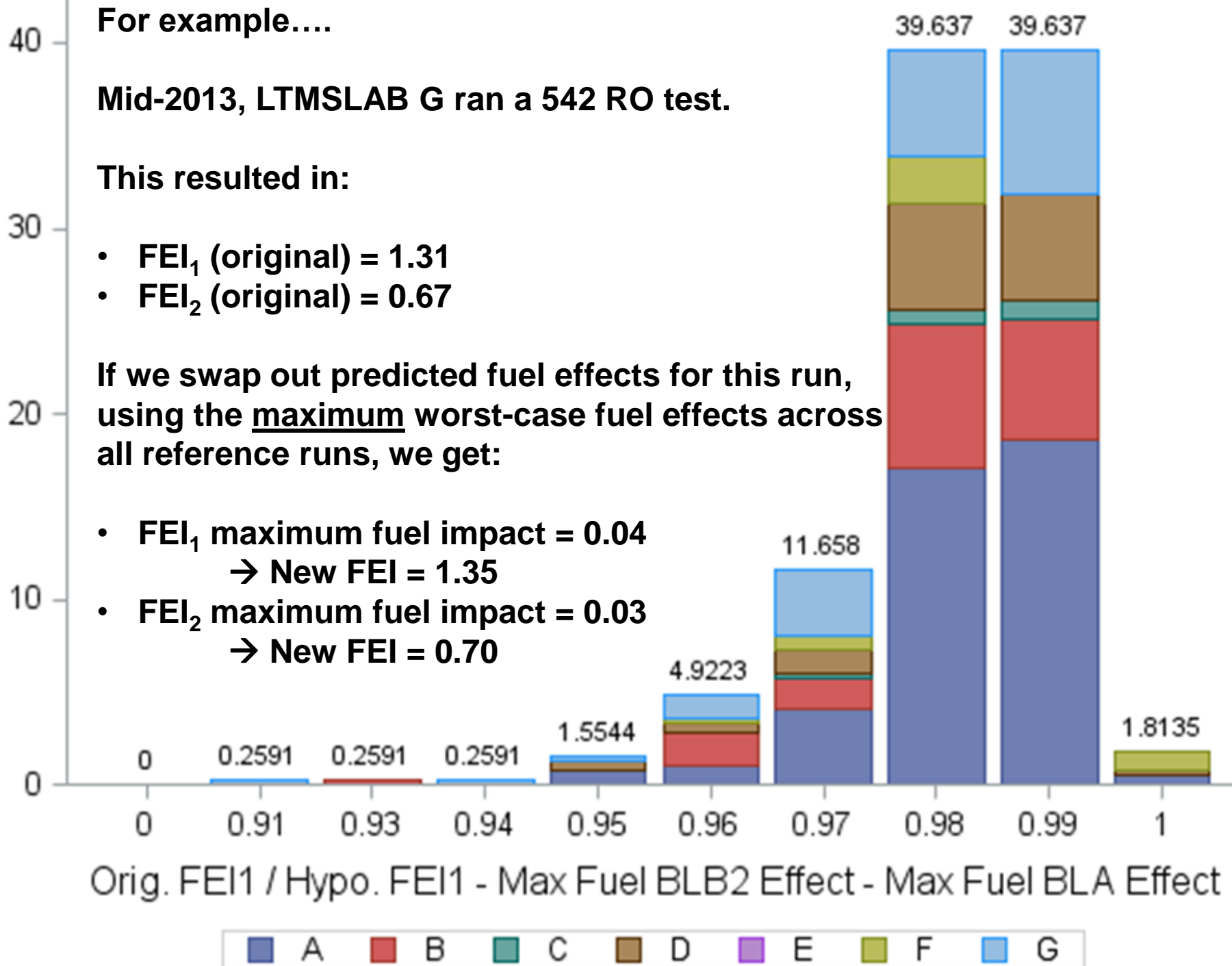
This resulted in:

- FEI_1 (original) = 1.31
- FEI_2 (original) = 0.67

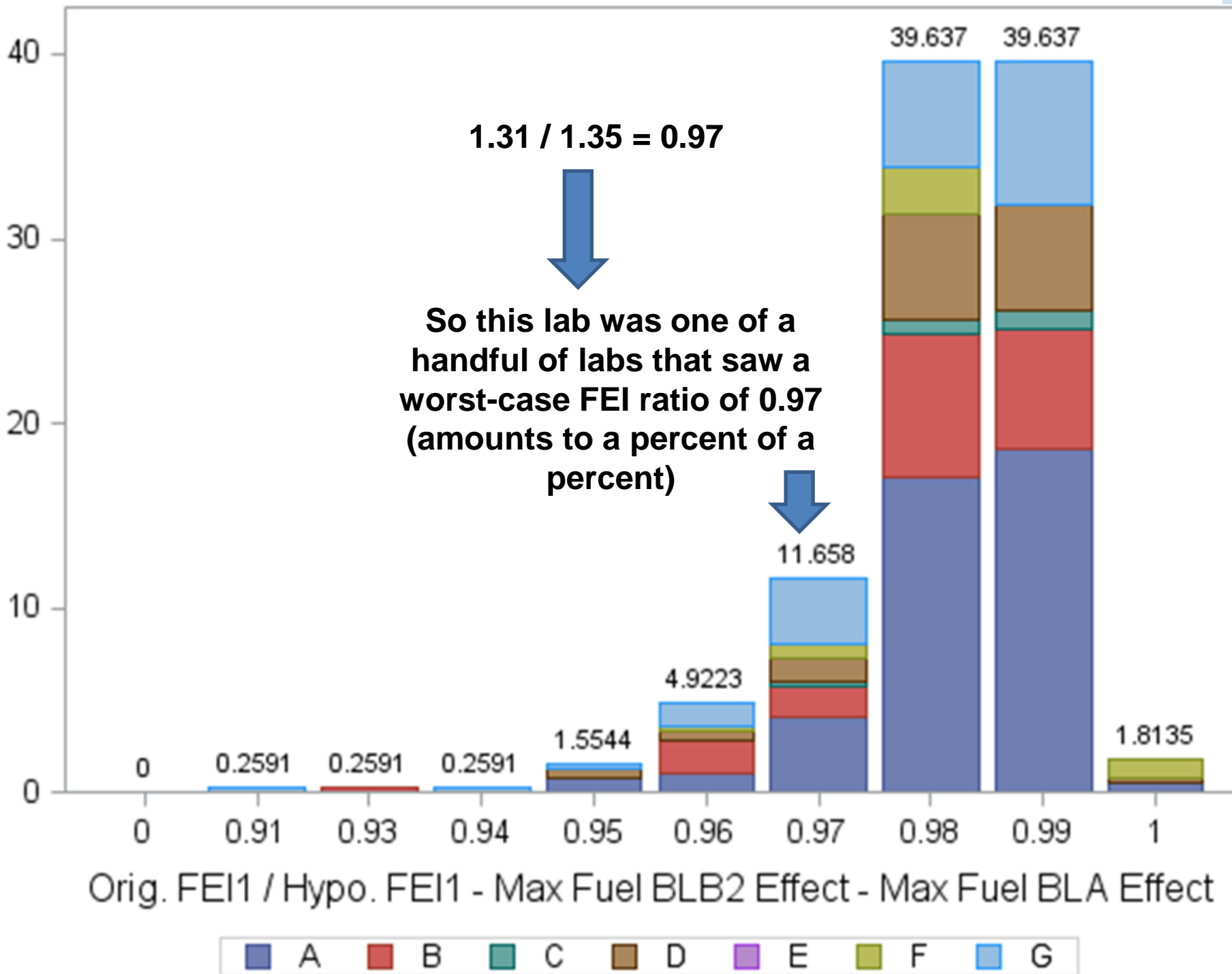
If we swap out predicted fuel effects for this run, using the maximum worst-case fuel effects across all reference runs, we get:

- FEI_1 maximum fuel impact = 0.04
→ New FEI_1 = 1.35
- FEI_2 maximum fuel impact = 0.03
→ New FEI_2 = 0.70

Percent of Total Frequency



Percent of Total Frequency



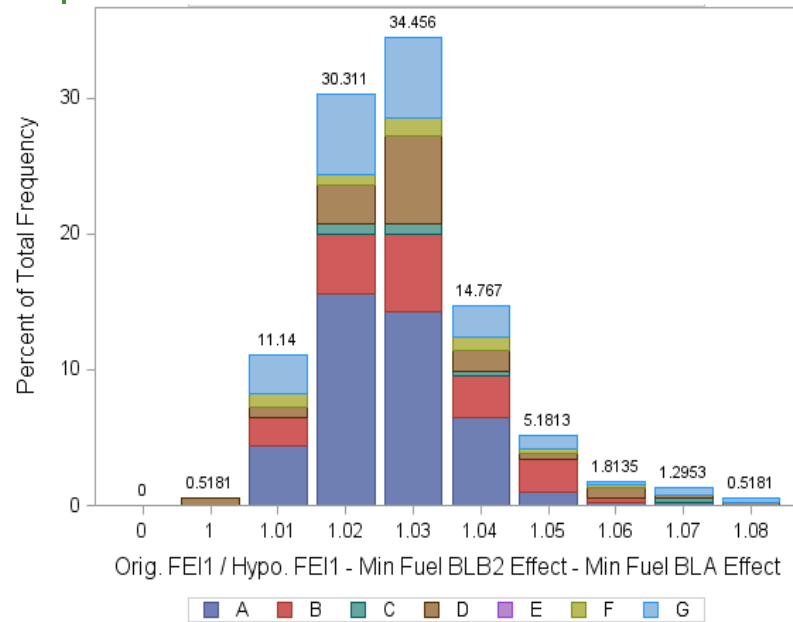
A few more comments on how to interpret results:

Recall the formulae for FEI calculations:

$$FEI_1 = 1 - \frac{\text{Weighted } ROFC_{16}}{0.80BLB2_{Wgt.} + 0.20BLA_{Wgt.}}$$

$$FEI_2 = 1 - \frac{\text{Weighted } ROFC_{84}}{0.10BLB2_{Wgt.} + 0.90BLA_{Wgt.}}$$

→ Bigger is “better,” i.e. closer to 100% FEI



To calculate worst-case FEI_1 ratios, for example:

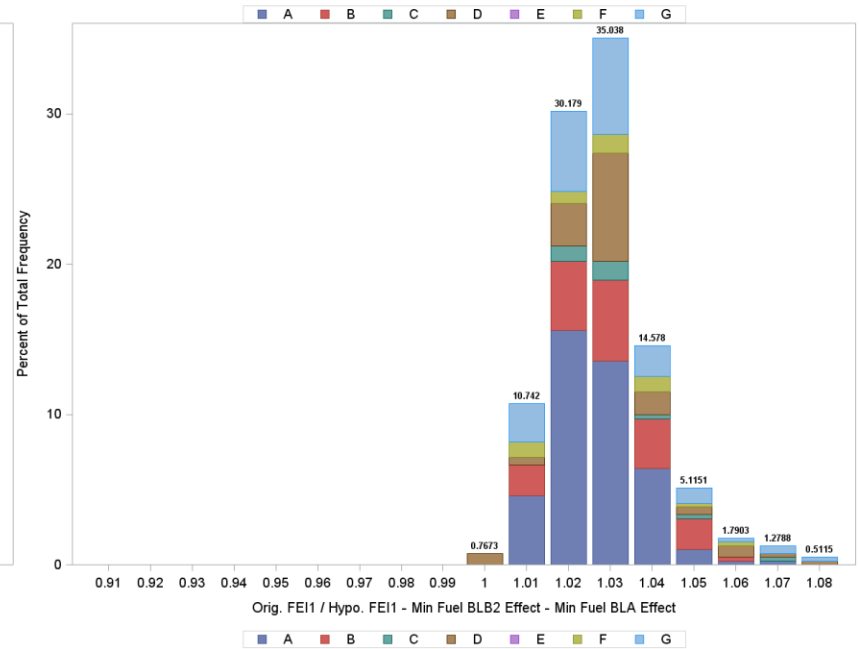
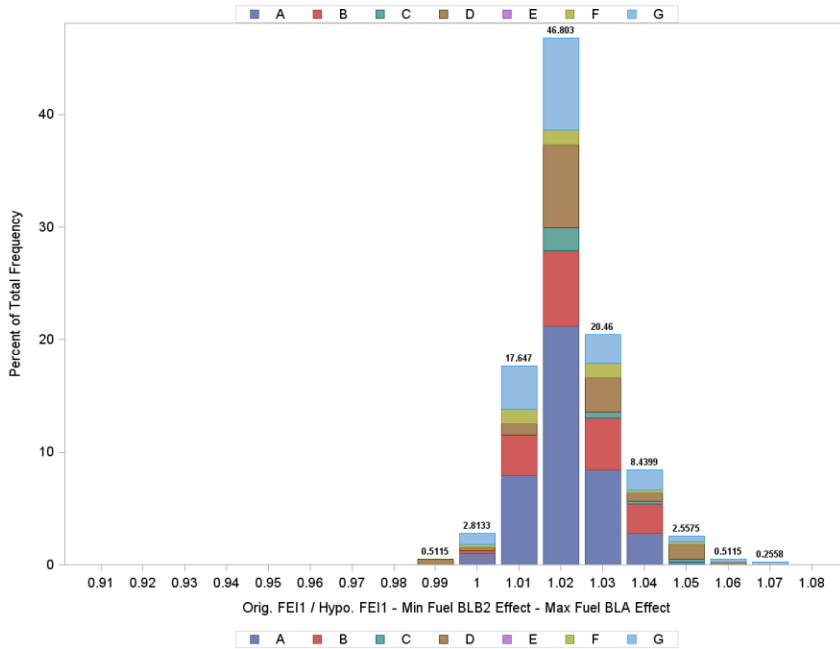
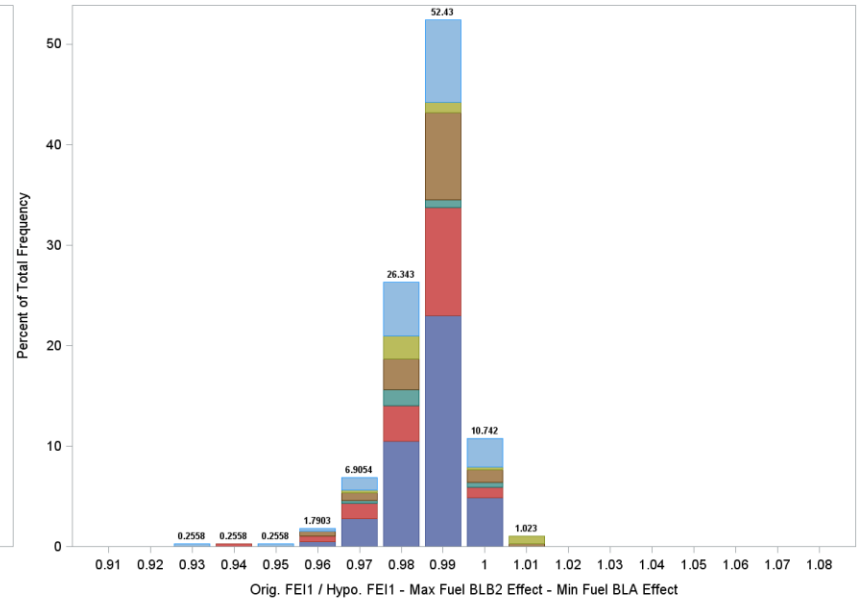
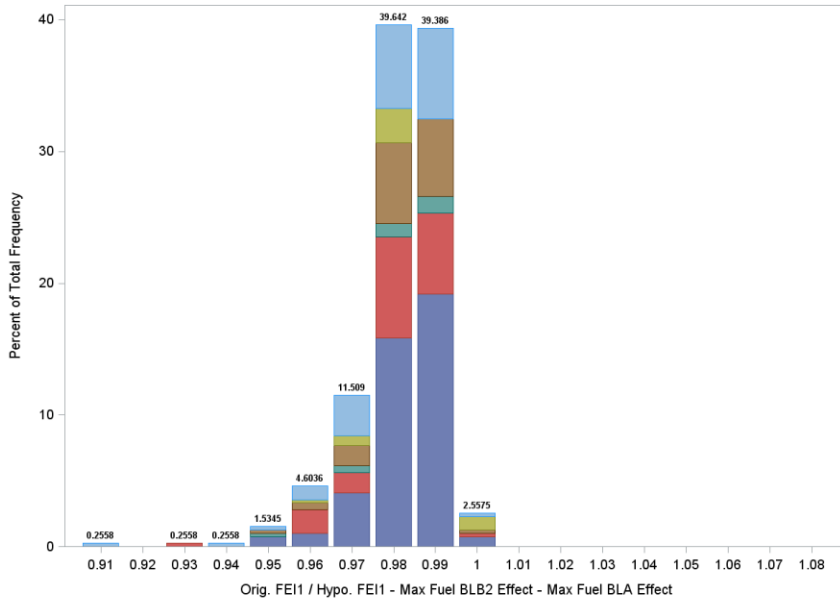
$$1 - \frac{\text{Weighted } ROFC_{16}}{0.80BLB2_{Wgt.} + 0.20BLA_{Wgt.}}$$

$$1 - \frac{\text{Weighted } ROFC_{16}}{0.80\textit{WorstBLB2}_{Wgt.} + 0.20\textit{WorstBLA}_{Wgt.}}$$

So:

1. If we take **maximum** worst-case fuel impact on BLB2 and BLA
→ FEI increases and FEI ratio < 1. In other words, fuel boosts FEI
2. If we take **minimum** worst-case fuel impact on BLB2 and BLA
→ FEI decreases and FEI ratio > 1. In other words, fuel decreases FEI

FEI₁ ratios: Using worst predicted effect of fuel across all reference tests

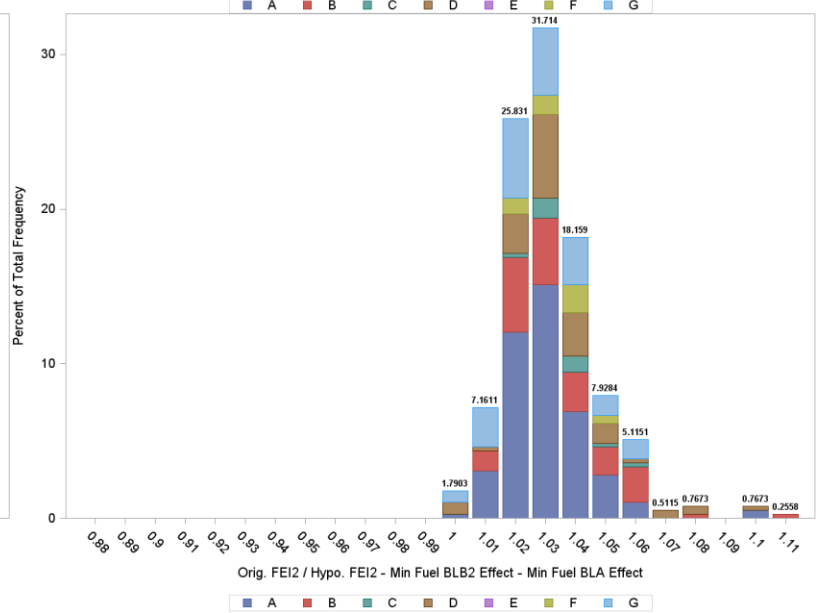
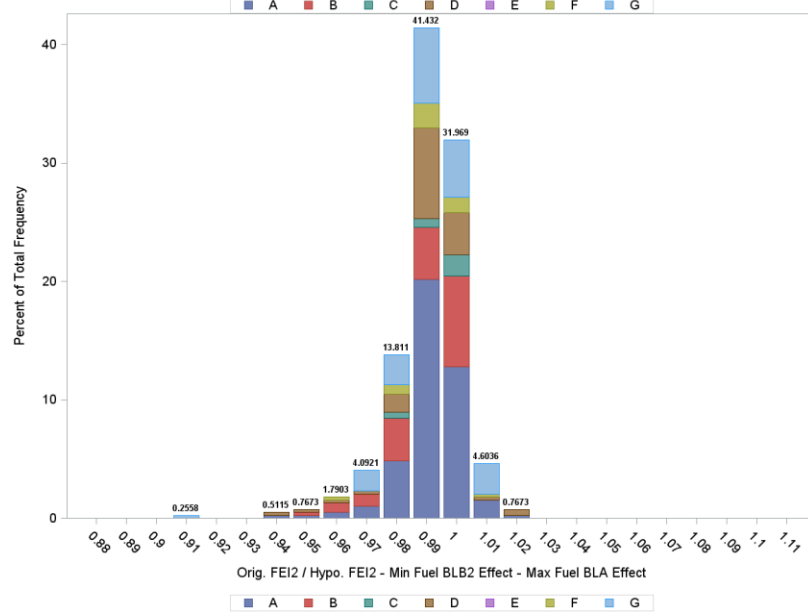
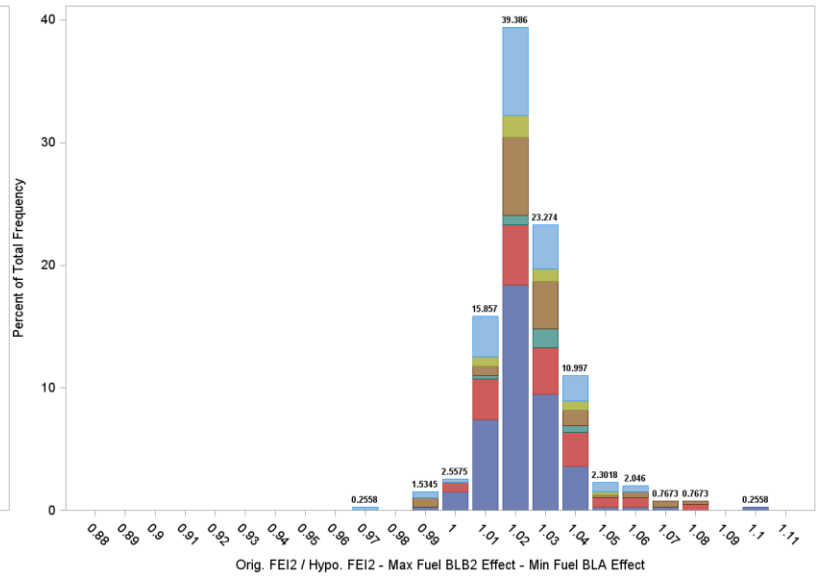
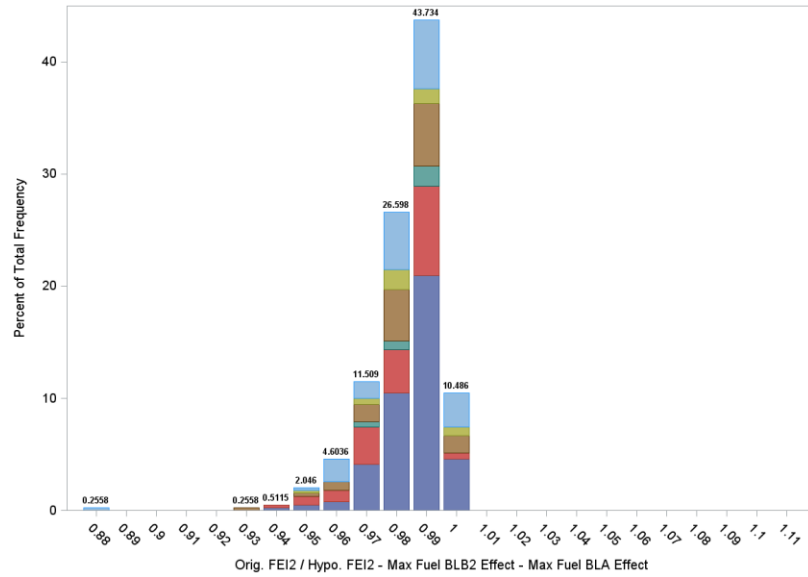


Given targeted values from ASTM test development: How do we practically interpret the previous graph?

Table of Ratio categories, target values, and worst-case impact.

| Ratio | FEI_1 | | | |
|-------|--------------------|--------------------|--------------------|---------------------|
| | 540 Target 1.32 | 541 Target 0.87 | 542 Target 1.49 | 1010 Target 1.34 |
| 1.05 | -0.063 | -0.041 | -0.071 | -0.064 |
| 1.04 | -0.051 | -0.033 | -0.057 | -0.052 |
| 1.03 | -0.038 | -0.025 | -0.043 | -0.039 |
| 1.02 | -0.026 | -0.017 | -0.029 | -0.026 |
| 1.01 | -0.013 | -0.009 | -0.015 | -0.013 |
| 1 | 0.000 | 0.000 | 0.000 | 0.000 |
| 0.99 | 0.013 | 0.009 | 0.015 | 0.014 |
| 0.98 | 0.027 | 0.018 | 0.030 | 0.027 |
| 0.97 | 0.041 | 0.027 | 0.046 | 0.041 |
| 0.96 | 0.055 | 0.036 | 0.062 | 0.056 |
| 0.95 | 0.069 | 0.046 | 0.078 | 0.071 |

FEI₂ ratios: Using worst predicted effect of fuel across all reference tests



Given targeted values from ASTM test development: How do we practically interpret the previous graph?

Table of Ratio categories, target values, and worst-case impact.

| Ratio | FEI ₂ | | | |
|-------------|--------------------|--------------------|--------------------|---------------------|
| | 540 Target 1.04 | 541 Target 0.71 | 542 Target 0.80 | 1010 Target 1.10 |
| 1.05 | -0.050 | -0.034 | -0.038 | -0.052 |
| 1.04 | -0.040 | -0.027 | -0.031 | -0.042 |
| 1.03 | -0.030 | -0.021 | -0.023 | -0.032 |
| 1.02 | -0.020 | -0.014 | -0.016 | -0.022 |
| 1.01 | -0.010 | -0.007 | -0.008 | -0.011 |
| 1 | 0.000 | 0.000 | 0.000 | 0.000 |
| 0.99 | 0.011 | 0.007 | 0.008 | 0.011 |
| 0.98 | 0.021 | 0.014 | 0.016 | 0.022 |
| 0.97 | 0.032 | 0.022 | 0.025 | 0.034 |
| 0.96 | 0.043 | 0.030 | 0.033 | 0.046 |
| 0.95 | 0.055 | 0.037 | 0.042 | 0.058 |

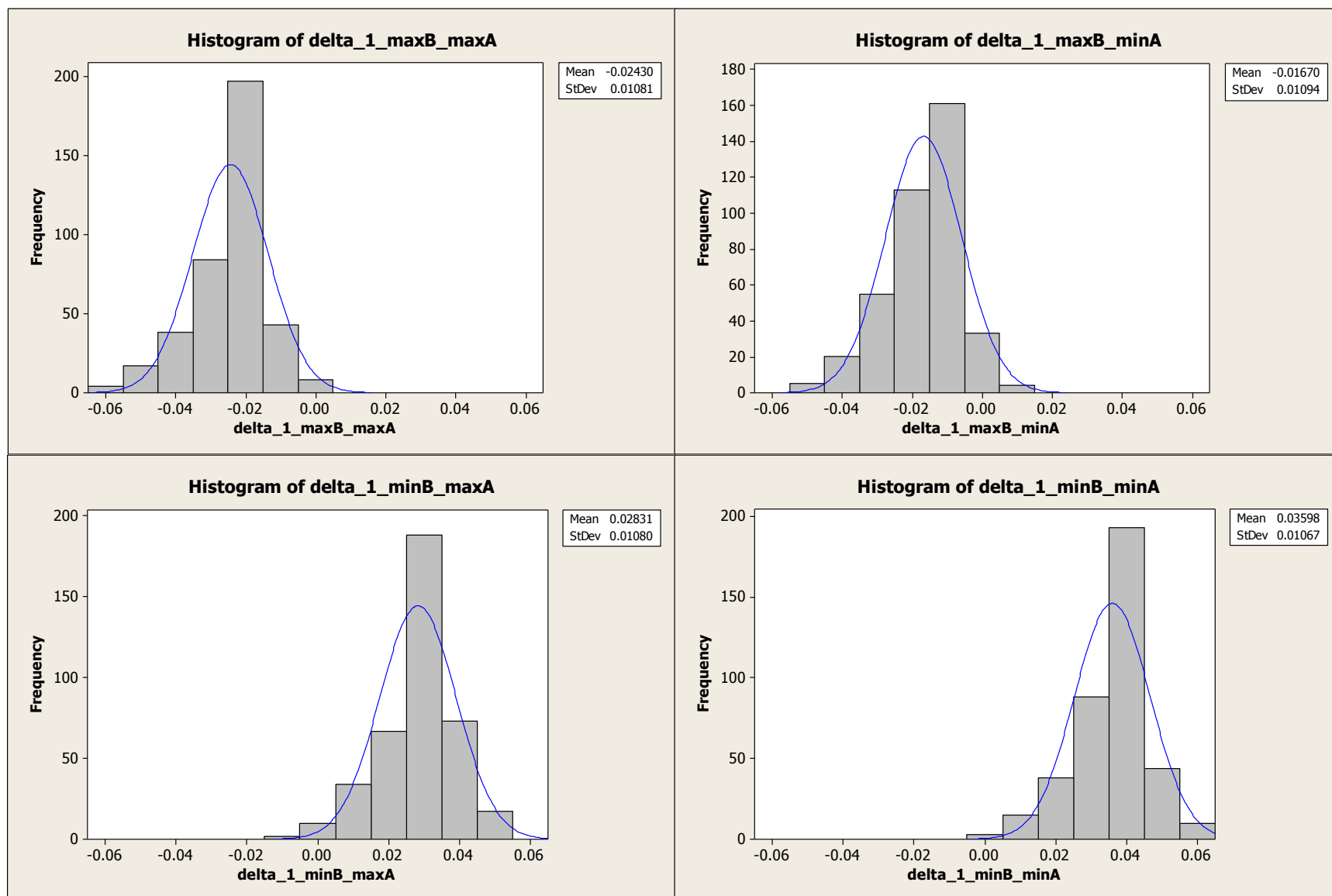
Summary

- ▶ **When we consider the worst-case impact of changing fuel batches during VID testing, the practical impact on FEI is negligible.**
- ▶ **Most of the variability in test results come from engine hours and engine bias:**
 - ▶ Typical R^2 value of fuel consumption based on engine is 75-80%.
 - ▶ Even if fuel batch changes during test, engine conditions are constant.
 - ▶ Think of FEI variability (for reference, not candidate oils!) as three partitions:
 - Engine – Fuel – Unexplained → Fuel is just a fraction of this.

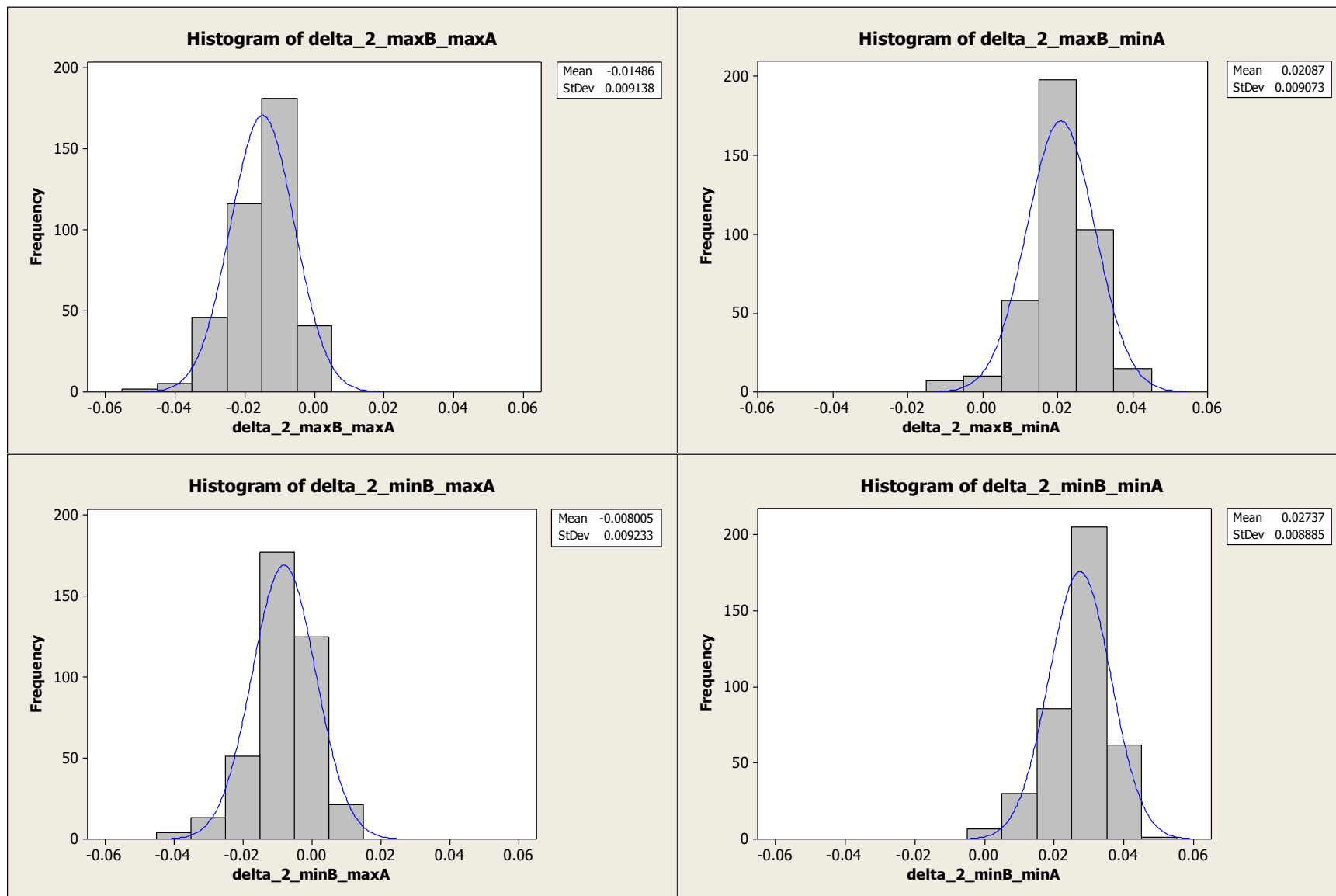
Questions or comments?

Appendix A: Additional Summary Slides

Summary: Delta values of FEI calculations



Summary: Delta values of FEI calculations



Summary

95% Confidence Intervals of delta values relative to original FEI

| Variable* | Mean | StDev | SE Mean | 95% CI |
|--|---------|--------|---------|------------------------|
| % FEI ₁ : BLB2 Max, BLA Max | -0.0188 | 0.0110 | 0.0006 | (-0.019942, -0.017748) |
| % FEI ₁ : BLB2 Max, BLA Min | -0.0129 | 0.0100 | 0.0005 | (-0.013928, -0.011946) |
| % FEI ₁ : BLB2 Min, BLA Max | 0.0216 | 0.0104 | 0.0005 | (0.020539, 0.022603) |
| % FEI ₁ : BLB2 Min, BLA Min | 0.0275 | 0.0118 | 0.0006 | (0.026368, 0.028705) |
| % FEI ₂ : BLB2 Max, BLA Max | -0.0170 | 0.0137 | 0.0007 | (-0.018343, -0.015610) |
| % FEI ₂ : BLB2 Max, BLA Min | 0.0232 | 0.0137 | 0.0007 | (0.021816, 0.024548) |
| % FEI ₂ : BLB2 Min, BLA Max | -0.0092 | 0.0123 | 0.0006 | (-0.010428, -0.007982) |
| % FEI ₂ : BLB2 Min, BLA Min | 0.0304 | 0.0144 | 0.0007 | (0.028940, 0.031800) |

* % delta relative to original FEI: $(\text{FEI original} - \text{FEI worst-case})/(\text{FEI original})$

Appendix B: Additional Univariate C of A Plots*

*See attached .pdf document.