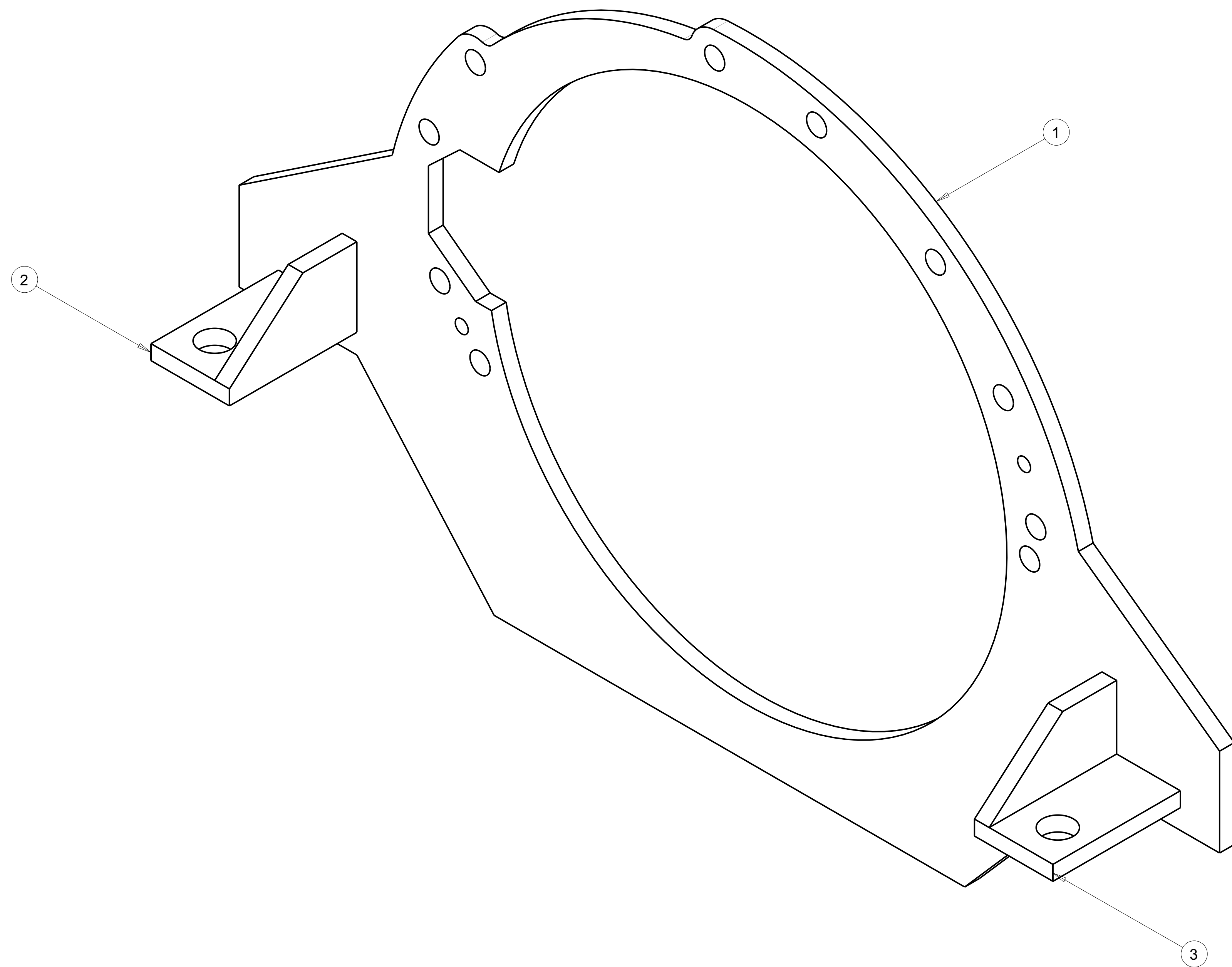


REVISIONS				
REV	SHT	ZONE	DESCRIPTION	DATE
A			INITIAL RELEASE	2014-03-24



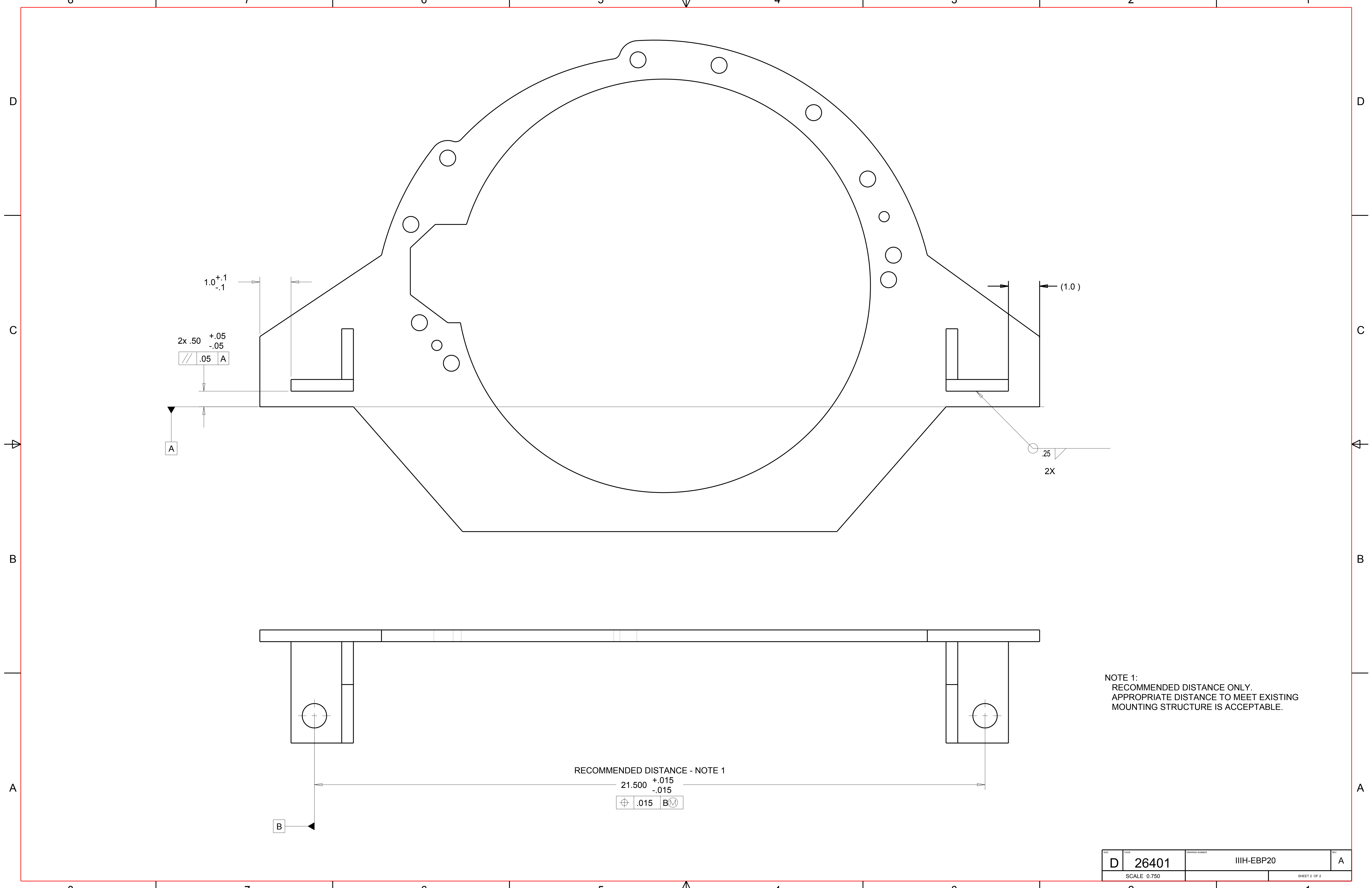
GENERAL NOTES

- 1) DO NOT SCALE THIS DRAWING
- 2) UNLESS OTHERWISE STATED:
 - a. ALL DIMENSIONING AND TOLERANCING IS IN INCHES PER ASME Y14.5-2009
 - b. BREAK ALL SHARP CORNERS AND SHARP EDGES R .010 MAXIMUM
 - c. MACHINED SURFACE FINISHES SHALL BE 125 MICROINCH OR BETTER
 - d. TAP DRILL DEPTHS SHOWN ARE MAXIMUM
 - e. FULL THREAD DEPTHS SHOWN ARE MINIMUM
 - f. CHAMFER ALL TAPED HOLES TO (NOMINAL DIA + 1/16) x 90°

QTY	CAGE	PART NUMBER	DESCRIPTION	MATERIAL/SPECIFICATION/NOTES	ITEM
1		IIIH-EBP23-A	RIGHT BRACKET		3
1		IIIH-EBP22-A	LEFT BRACKET		2
1		IIIH-EBP21-C	MOUNTING PLATE		1

BILL OF MATERIAL/PARTS LIST

DEFAULT TOLERANCES		APPROVAL SIGNATURES	
ONE PLACE (X.X) = ±	0.1	DRFT	
TWO PLACES (X.XX) = ±	0.01	CHKD	
THREE PLACES (X.XXX) = ±	0.005	DSGN	
FOUR PLACES (X.XXXX) = ±	0.0005	PRCL	
ANGLES = ±	0.5 DEGREE	DATE	COMPLETION DATE: 2014-03-24
SURFACE FINISHES ≤	125 MICROINCH RA	FILE	MODEL: ENGINE_MOUNTING_PLATE
THIRD ANGLE PROJECTION		EXCEPT AS MAY OTHERWISE BE PROVIDED BY CONTRACT, THESE DRAWINGS AND SPECIFICATIONS ARE THE PROPERTY OF SOUTHWEST RESEARCH INSTITUTE, ARE ISSUED IN STRICT CONFIDENCE, AND SHALL NOT BE REPRODUCED, OR COPIED, OR USED AS THE BASIS FOR MANUFACTURE OR SALE OF ANY APPARATUS SHOWN THEREON WITHOUT PERMISSION	
			SOUTHWEST RESEARCH INSTITUTE A OFFICE of AUTOMOTIVE ENGINEERING 6220 CULEBRA ROAD SAN ANTONIO, TEXAS 78238
SCALE	0.750	UNIT WEIGHT	= LBS
REV	D	DATE	26401
REV	A	DESCRIPTION	IIIH-EBP20
SHEET 1 OF 2			



1.0^{+0.1}_{-0.1}

2x .50^{+0.05}_{-0.05}

/// .05 A

(1.0)

.25

2X

RECOMMENDED DISTANCE - NOTE 1

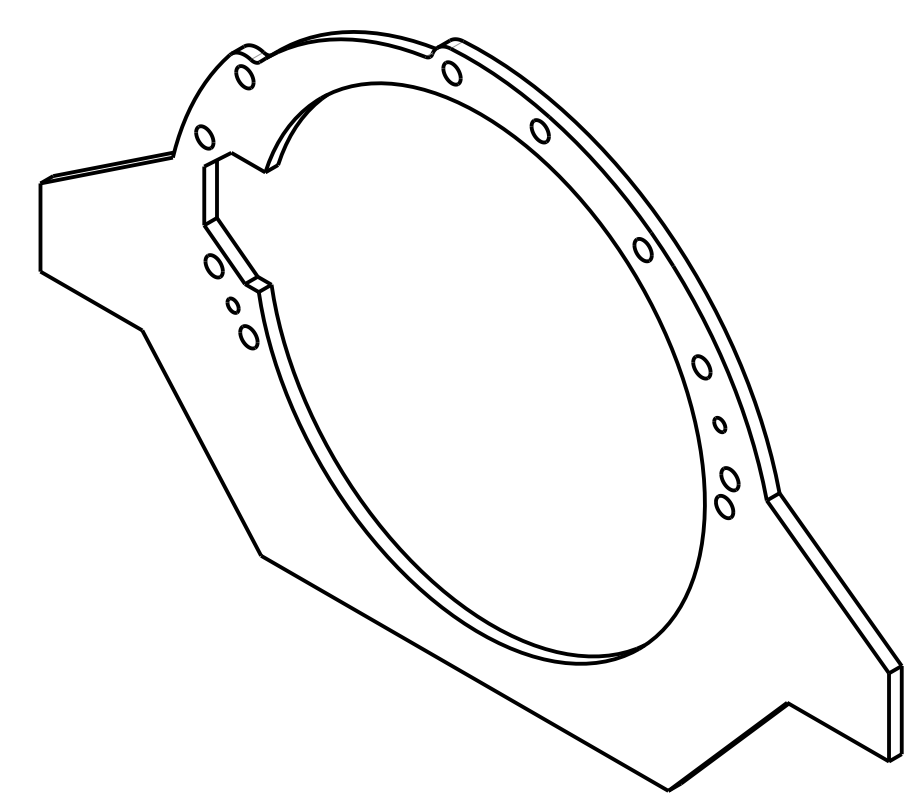
21.500^{+0.015}_{-0.015}

⊕ .015 B M

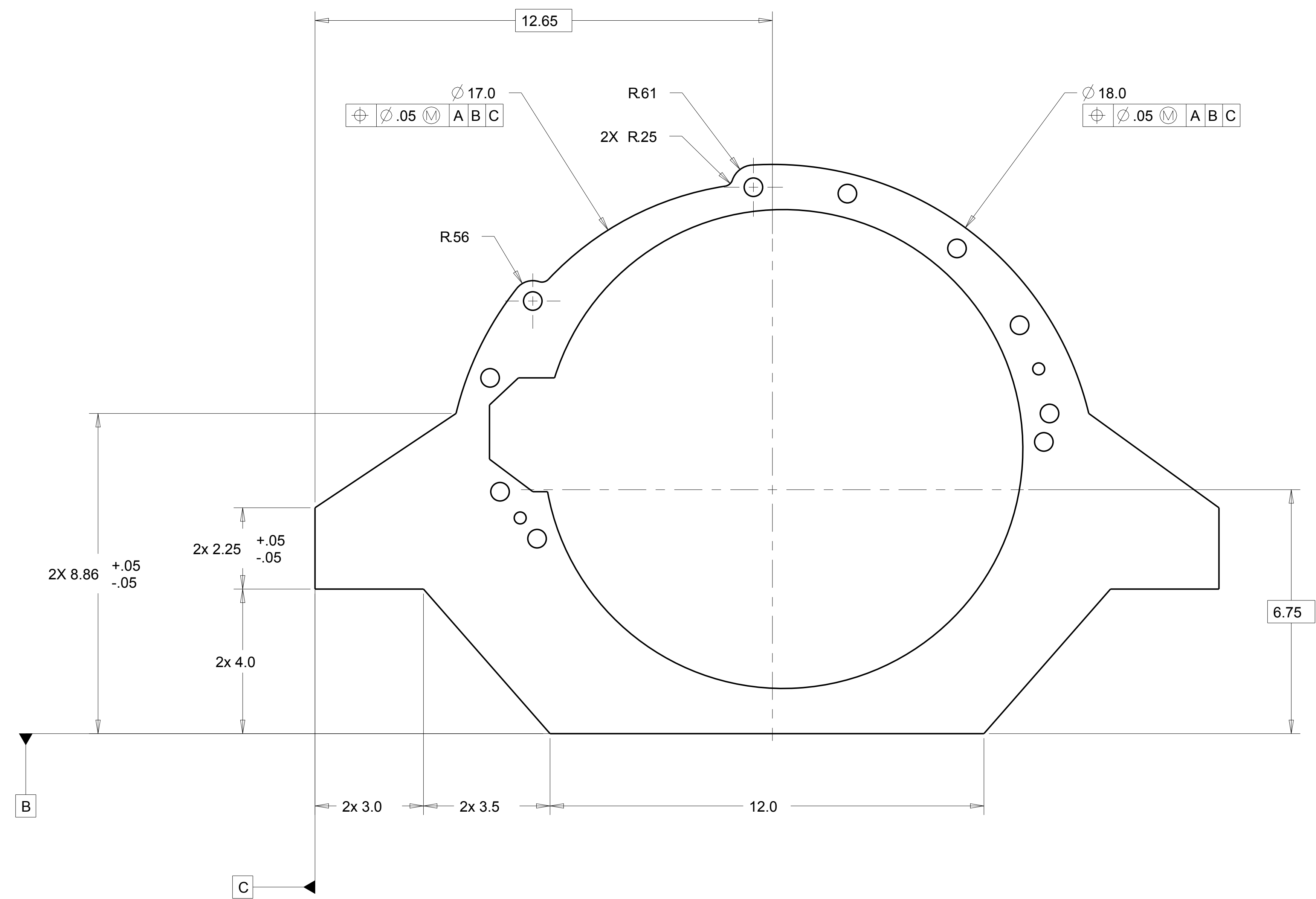
NOTE 1:
RECOMMENDED DISTANCE ONLY.
APPROPRIATE DISTANCE TO MEET EXISTING
MOUNTING STRUCTURE IS ACCEPTABLE.

REV	DATE	DRAWING NUMBER	REV
D	26401	IIIH-EBP20	A
SCALE 0.750		SHEET 2 OF 2	

REVISIONS				
REV	SHT	ZONE	DESCRIPTION	DATE
A			INITIAL RELEASE	2014-03-24
B			ADDED UPPER NOTCH FEATURE	2014-04-21
C			REPOSITIONED DOWEL PIN HOLES	2014-05-13



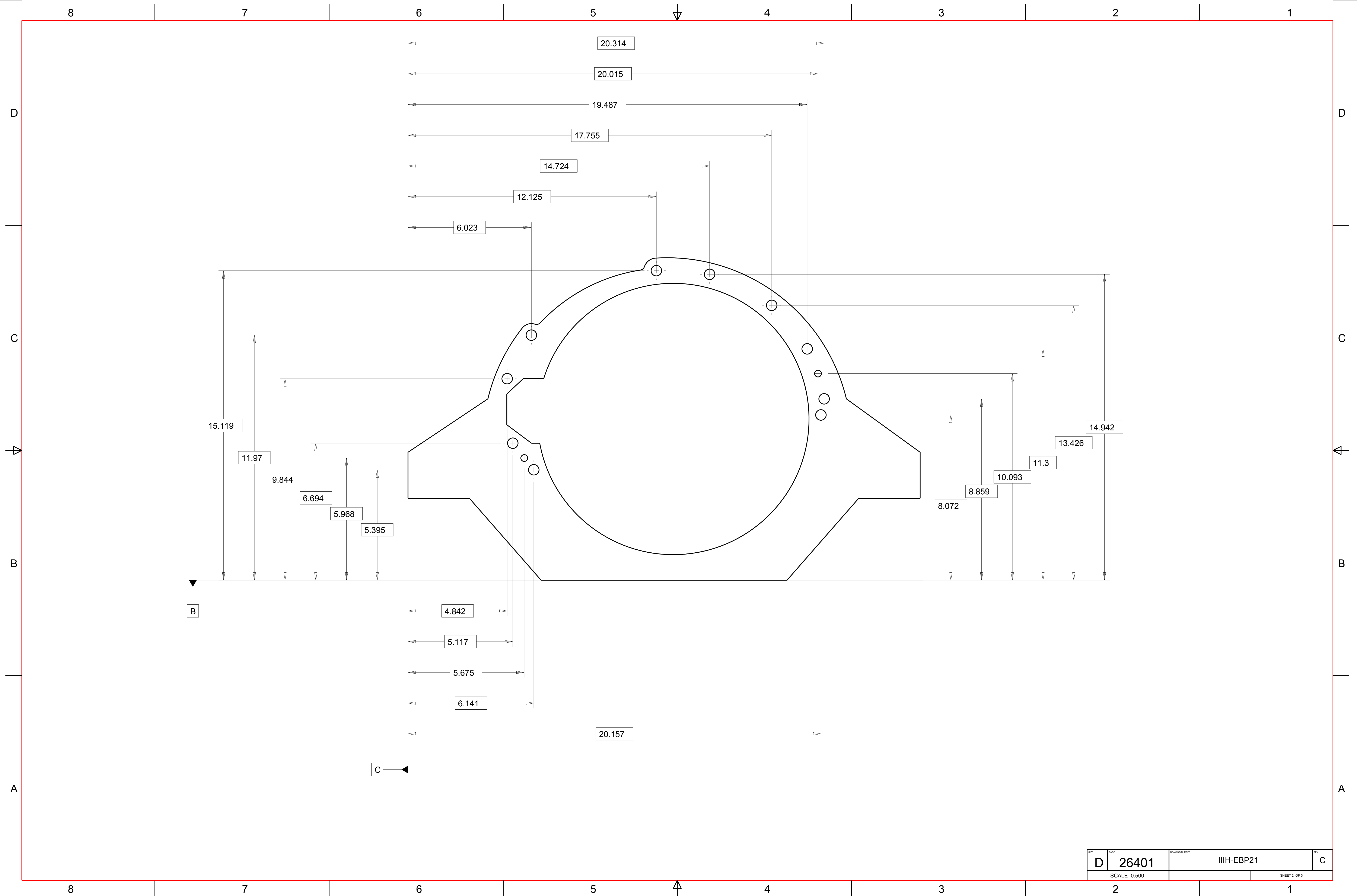
REFERENCE VIEW
SCALE 0.250



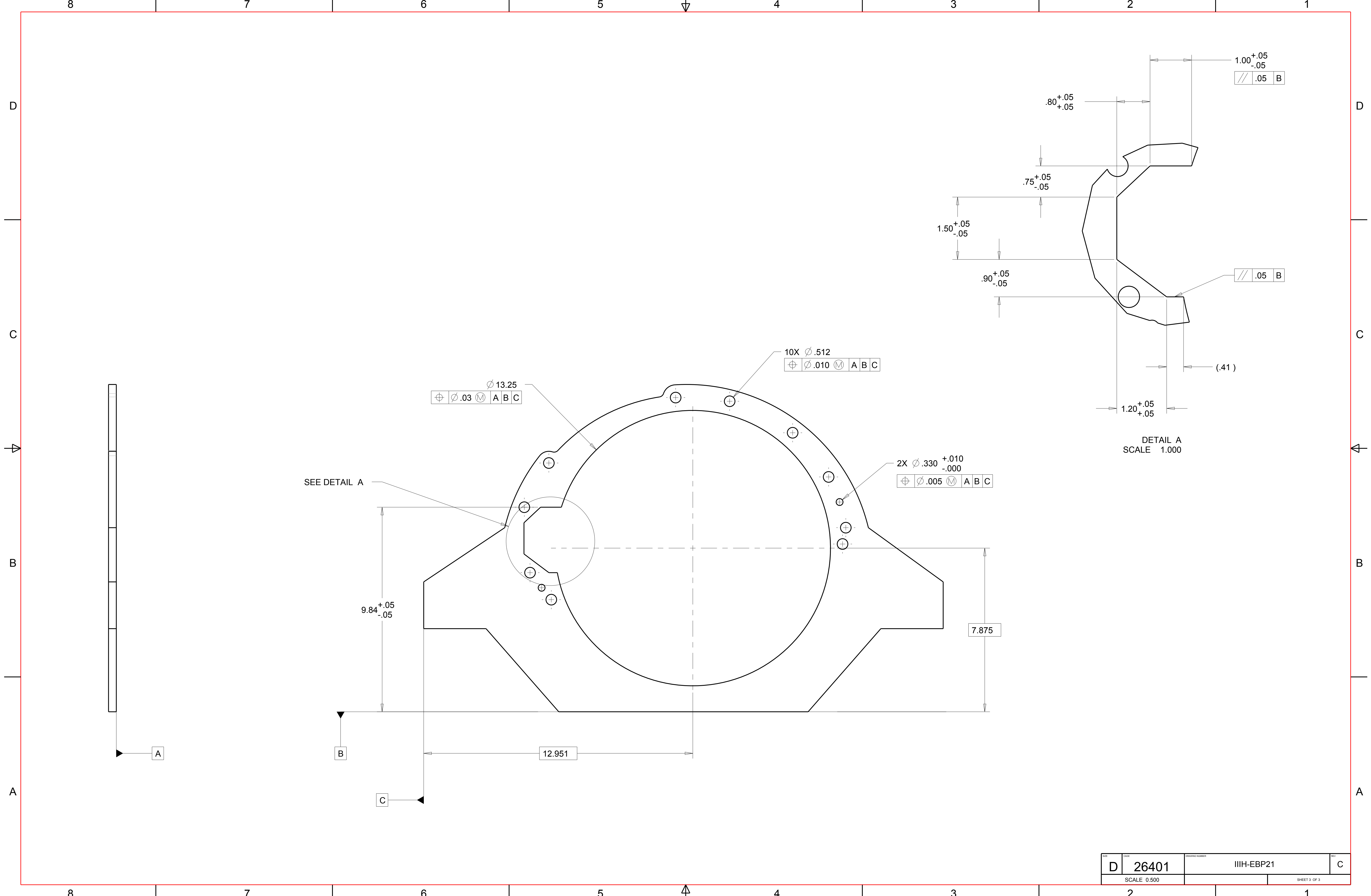
GENERAL NOTES

- 1) DO NOT SCALE THIS DRAWING
- 2) UNLESS OTHERWISE STATED:
 - a. ALL DIMENSIONING AND TOLERANCING IS IN INCHES PER ASME Y14.5-2009
 - b. BREAK ALL SHARP CORNERS AND SHARP EDGES R .010 MAXIMUM
 - c. MACHINED SURFACE FINISHES SHALL BE 125 MICROINCH OR BETTER
 - d. TAP DRILL DEPTHS SHOWN ARE MAXIMUM
 - e. FULL THREAD DEPTHS SHOWN ARE MINIMUM
 - f. CHAMFER ALL TAPED HOLES TO (NOMINAL DIA + 1/16) x 90°

QTY	CAGE	PART NUMBER	DESCRIPTION	MATERIAL/SPECIFICATION/NOTES	ITEM
				3/8" PLATE - ASTM A36 OR EQUIVALENT	
BILL OF MATERIAL/PARTS LIST					
DEFAULT TOLERANCES			APPROVAL SIGNATURES		
ONE PLACE (X.X) = ±	0.1	DRPT	<p>SOUTHWEST RESEARCH INSTITUTE OFFICE of AUTOMOTIVE ENGINEERING 6220 CULEBRA ROAD SAN ANTONIO, TEXAS 78238</p> <p>PLATE, ENGINE MOUNTING</p>		
TWO PLACES (X.XX) = ±	0.01	CRVD			
THREE PLACES (X.XXX) = ±	0.005	DRSN			
FOUR PLACES (X.XXXX) = ±	0.0005	PRECJ			
ANGLES = ±	0.5 DEGREE	DATE			
SURFACE FINISHES ≤ 125 MICROINCH RA			FILE	COMPLETION DATE: 2014-03-24	
THIRD ANGLE PROJECTION			EXCEPT AS MAY OTHERWISE BE PROVIDED BY CONTRACT, THESE DRAWINGS AND SPECIFICATIONS ARE THE PROPERTY OF SOUTHWEST RESEARCH INSTITUTE, ARE ISSUED IN STRICT CONFIDENCE, AND SHALL NOT BE REPRODUCED, OR COPIED, OR USED AS THE BASIS FOR MANUFACTURE OR SALE OF ANY APPARATUS SHOWN THEREON WITHOUT PERMISSION		
D 26401		IIIH-EBP21		C	
SCALE 0.500		UNIT WEIGHT = LBS		SHEET 1 OF 3	

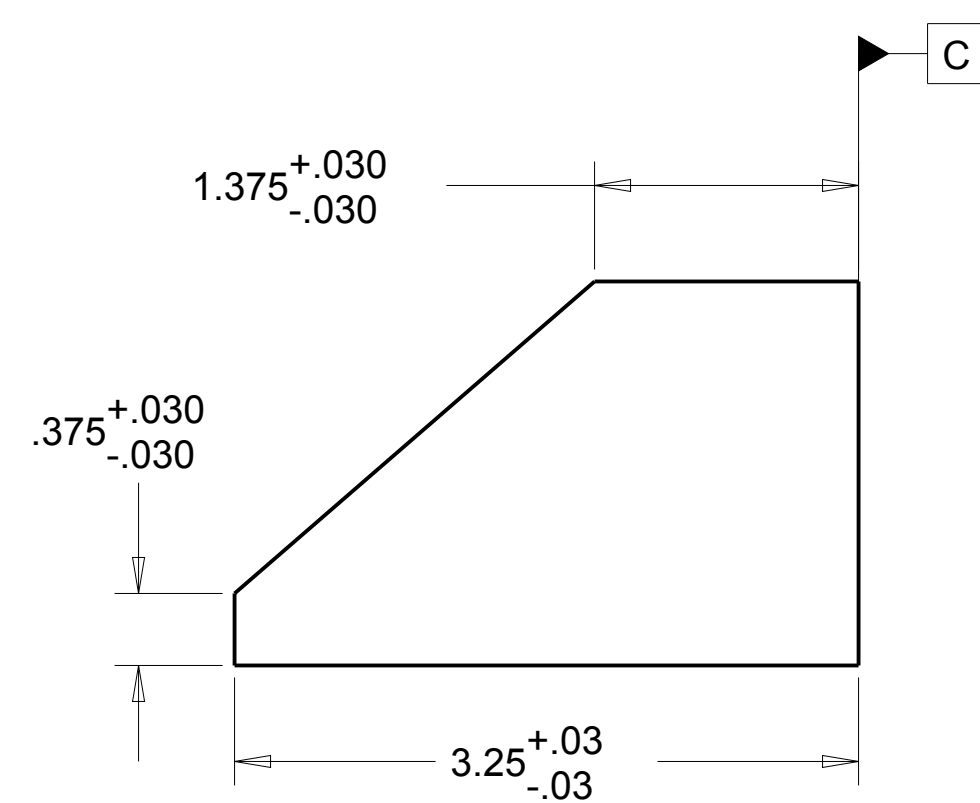
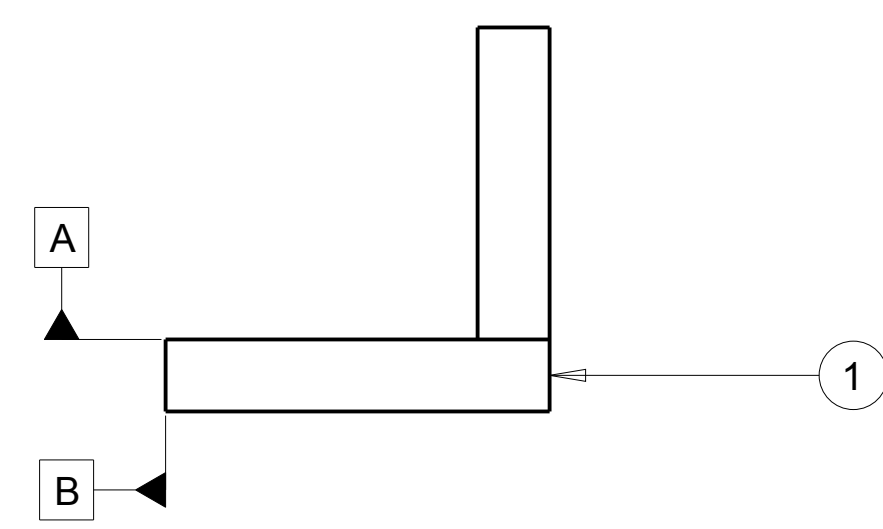
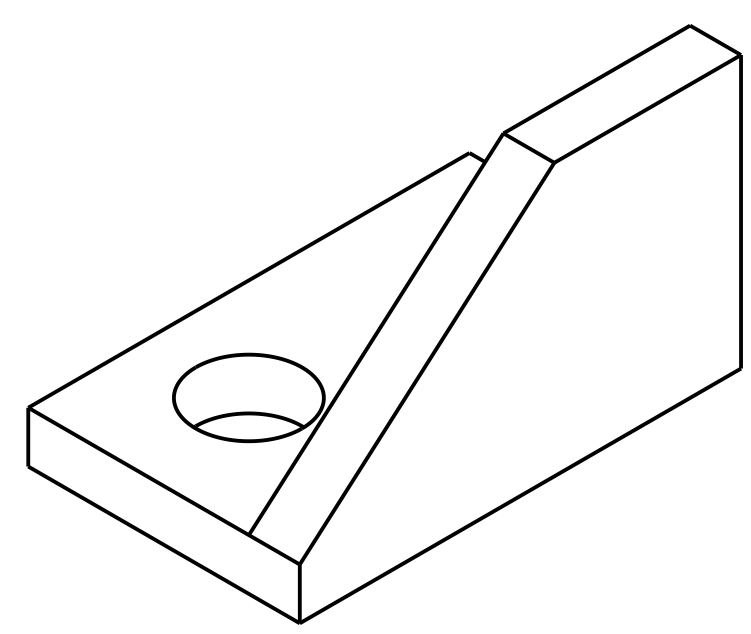
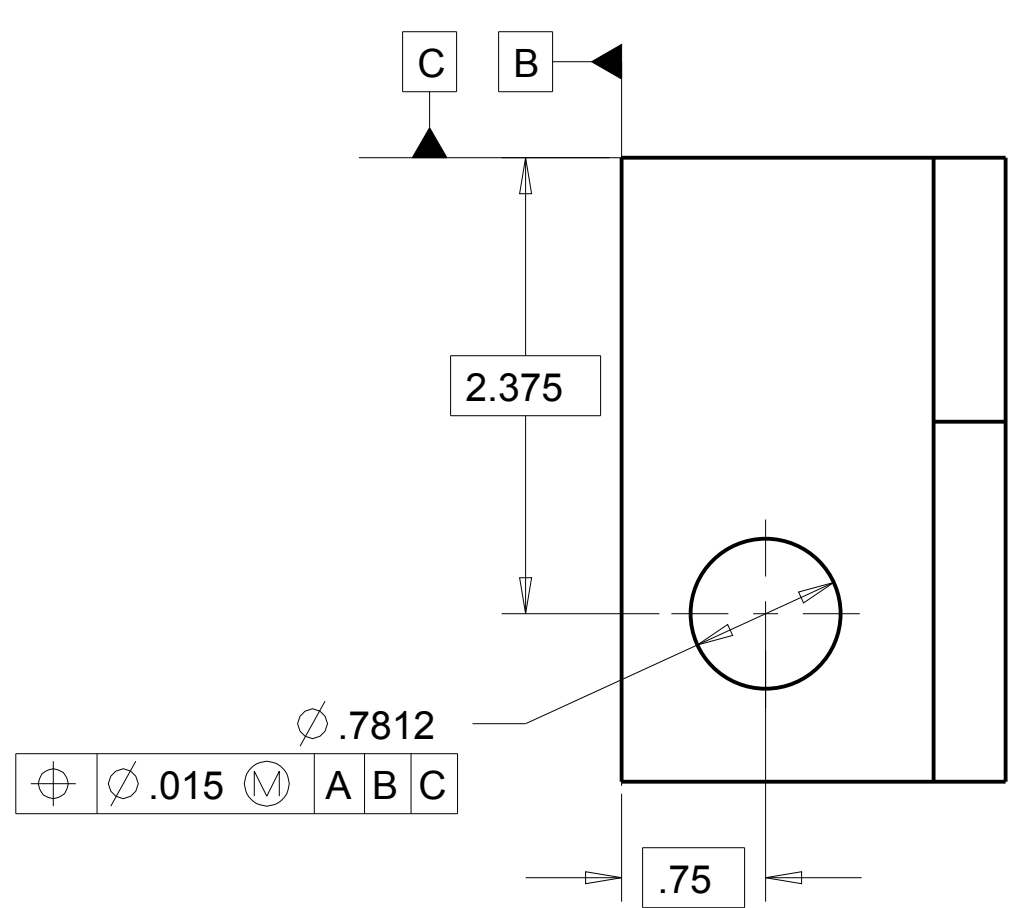


REV	DATE	DRAWING NUMBER	REV
D	26401	IIIH-EBP21	C
SCALE 0.500		SHEET 2 OF 3	



SEC	CODE	DRAWING NUMBER	REV
D	26401	IIIH-EBP21	C
SCALE 0.500		SHEET 3 OF 3	

REVISIONS				
REV	SHT	ZONE	DESCRIPTION	DATE
A			INITIAL RELEASE	2014-03-24

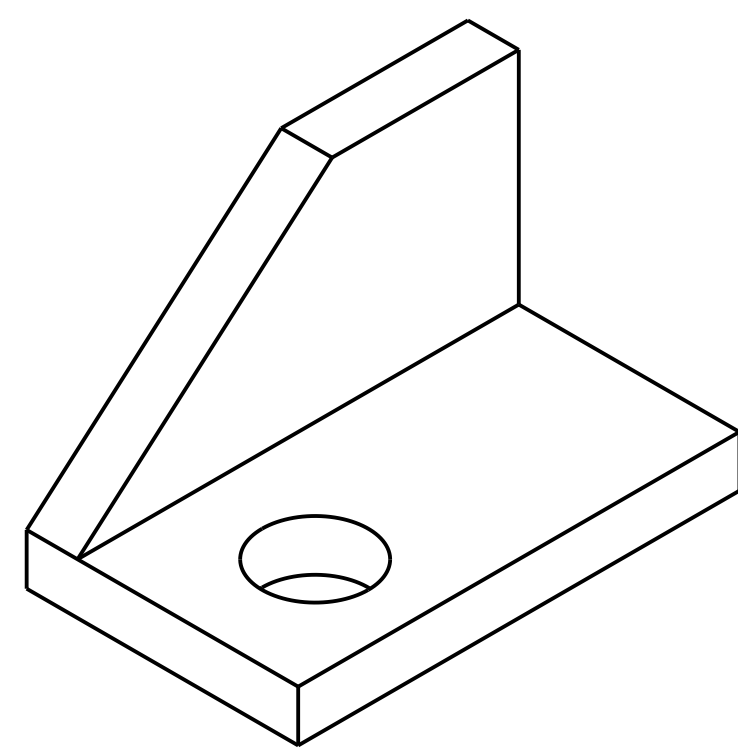


GENERAL NOTES

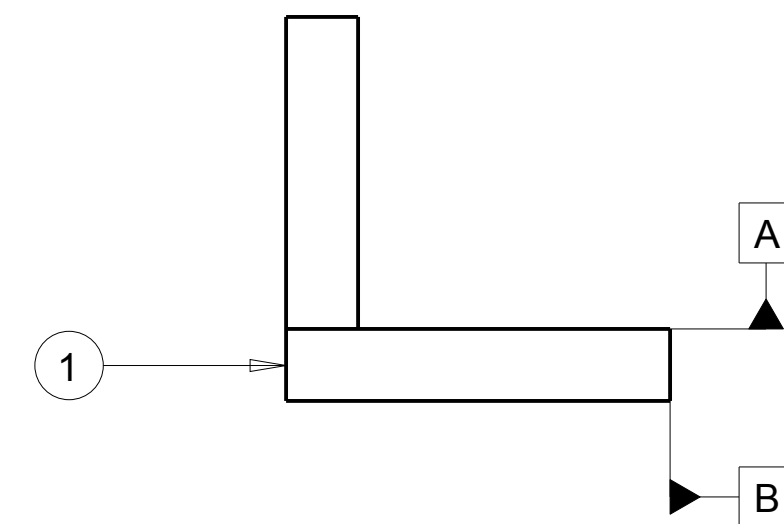
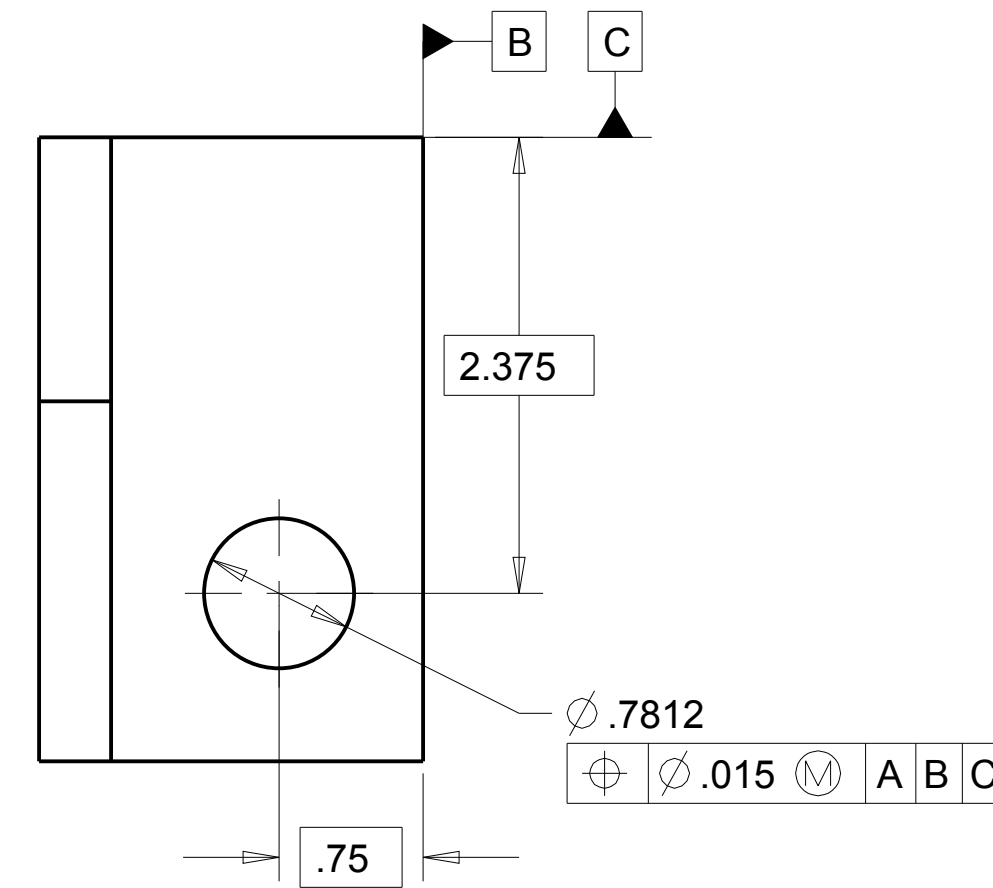
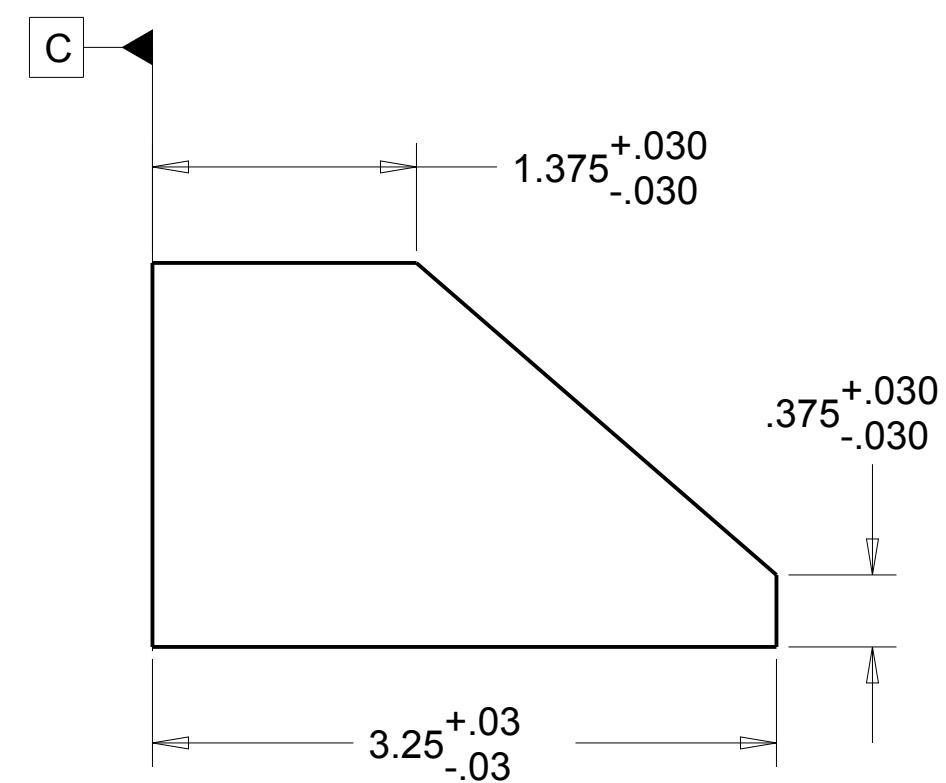
- 1) DO NOT SCALE THIS DRAWING
- 2) UNLESS OTHERWISE STATED:
 - a. ALL DIMENSIONING AND TOLERANCING IS IN INCHES PER ASME Y14.5-2009
 - b. BREAK ALL SHARP CORNERS AND SHARP EDGES R .010 MAXIMUM
 - c. MACHINED SURFACE FINISHES SHALL BE 125 MICROINCH OR BETTER
 - d. TAP DRILL DEPTHS SHOWN ARE MAXIMUM
 - e. FULL THREAD DEPTHS SHOWN ARE MINIMUM
 - f. CHAMFER ALL TAPED HOLES TO (NOMINAL DIA + 1/16) x 90°

QTY	CAGE	PART NUMBER	DESCRIPTION	MATERIAL/SPECIFICATION/NOTES	ITEM
			STEEL ANGLE	2" X 2" X 3/8" ANGLE - ASTM A36 OR EQUIVALENT	
BILL OF MATERIAL/PARTS LIST					
DEFAULT TOLERANCES			APPROVAL SIGNATURES		
ONE PLACE (X.X) = ± 0.1			DRPT		
TWO PLACES (X.XX) = ± 0.01			CHVD		
THREE PLACES (X.XXX) = ± 0.005			DSGN		
FOUR PLACES (X.XXXX) = ± 0.0005			PREL		
ANGLES = ± 0.5 DEGREE			DATE		
SURFACE FINISHES ≤ 125 MICROINCH RA			COMPLETION DATE: 2014-03-24		
THIRD ANGLE PROJECTION			FILE MODEL: BRACKET_ENGINE_BACK_PLATE		
			<small>EXCEPT AS MAY OTHERWISE BE PROVIDED BY CONTRACT, THESE DRAWINGS AND SPECIFICATIONS ARE THE PROPERTY OF SOUTHWEST RESEARCH INSTITUTE, ARE ISSUED IN STRICT CONFIDENCE, AND SHALL NOT BE REPRODUCED, OR COPIED, OR USED AS THE BASIS FOR MANUFACTURE OR SALE OF ANY APPARATUS SHOWN THEREON WITHOUT PERMISSION.</small>		
		SOUTHWEST RESEARCH INSTITUTE A OFFICE of AUTOMOTIVE ENGINEERING 6220 CULEBRA ROAD SAN ANTONIO, TEXAS 78238			
		BRACKET, LEFT			
REV	DATE	QTY	DESCRIPTION	REVISION NUMBER	REV
D	26401		IIIH-EBP22		A
SCALE 1.000		UNIT WEIGHT = LBS		SHEET 1 OF 1	

REVISIONS				
REV	SHT	ZONE	DESCRIPTION	DATE
A			INITIAL RELEASE	2014-03-24



REFERENCE VIEW



GENERAL NOTES

- 1) DO NOT SCALE THIS DRAWING
- 2) UNLESS OTHERWISE STATED:
 - a. ALL DIMENSIONING AND TOLERANCING IS IN INCHES PER ASME Y14.5-2009
 - b. BREAK ALL SHARP CORNERS AND SHARP EDGES R .010 MAXIMUM
 - c. MACHINED SURFACE FINISHES SHALL BE 125 MICROINCH OR BETTER
 - d. TAP DRILL DEPTHS SHOWN ARE MAXIMUM
 - e. FULL THREAD DEPTHS SHOWN ARE MINIMUM
 - f. CHAMFER ALL TAPED HOLES TO (NOMINAL DIA + 1/16) x 90°

QTY	CAGE	PART NUMBER	DESCRIPTION	MATERIAL/SPECIFICATION/NOTES	ITEM
			STEEL ANGLE	2" X 2" X 3/8" ANGLE - ASTM A36 OR EQUIVALENT	
BILL OF MATERIAL/PARTS LIST					
DEFAULT TOLERANCES			APPROVAL SIGNATURES		
ONE PLACE (X.X) = ±	0.1	DRPT			
TWO PLACES (X.XX) = ±	0.01	CHVD			
THREE PLACES (X.XXX) = ±	0.005	DSGN			
FOUR PLACES (X.XXXX) = ±	0.0005	PRECJ			
ANGLES = ±	0.5 DEGREE	DATE	COMPLETION DATE: 2014-03-24		
SURFACE FINISHES ≤	125 MICROINCH RA	FILE	MODEL: BRACKET_RIGHT		
THIRD ANGLE PROJECTION			EXCEPT AS MAY OTHERWISE BE PROVIDED BY CONTRACT, THESE DRAWINGS AND SPECIFICATIONS ARE THE PROPERTY OF SOUTHWEST RESEARCH INSTITUTE, ARE ISSUED IN STRICT CONFIDENCE, AND SHALL NOT BE REPRODUCED, OR COPIED, OR USED AS THE BASIS FOR MANUFACTURE OR SALE OF ANY APPARATUS SHOWN THEREON WITHOUT PERMISSION		
D		26401		IIIH-EBP23	
SCALE 1.000		UNIT WEIGHT = LBS		SHEET 1 OF 1	

SOUTHWEST RESEARCH INSTITUTE
 OFFICE of AUTOMOTIVE ENGINEERING
 6220 CULEBRA ROAD SAN ANTONIO, TEXAS 78238

BRACKET, RIGHT

D 26401 IIIH-EBP23 A
 SCALE 1.000 UNIT WEIGHT = LBS SHEET 1 OF 1