

T-13 OC Piston/Ring Comparison

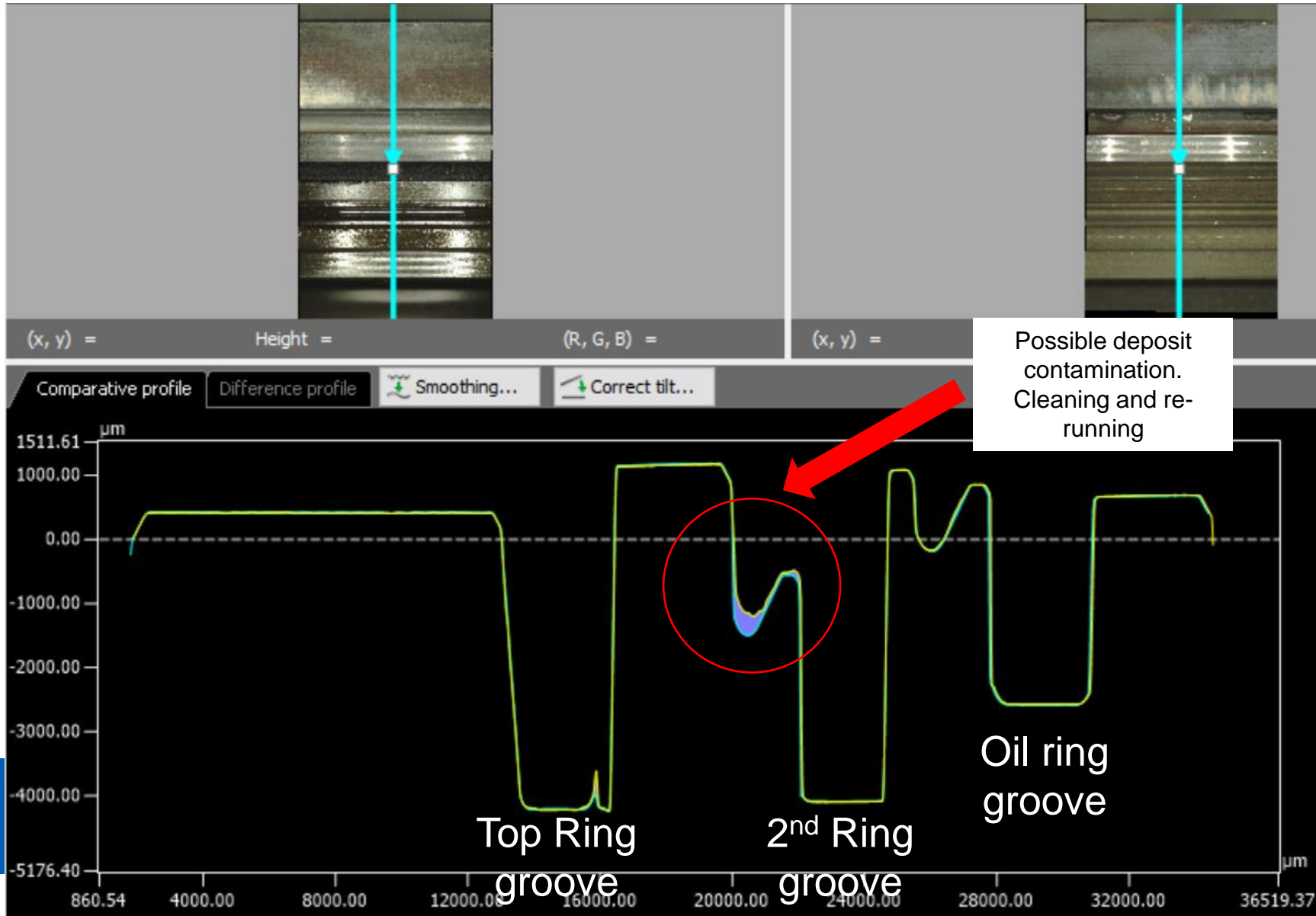
4/4/2024



Oil Consumption Comparison

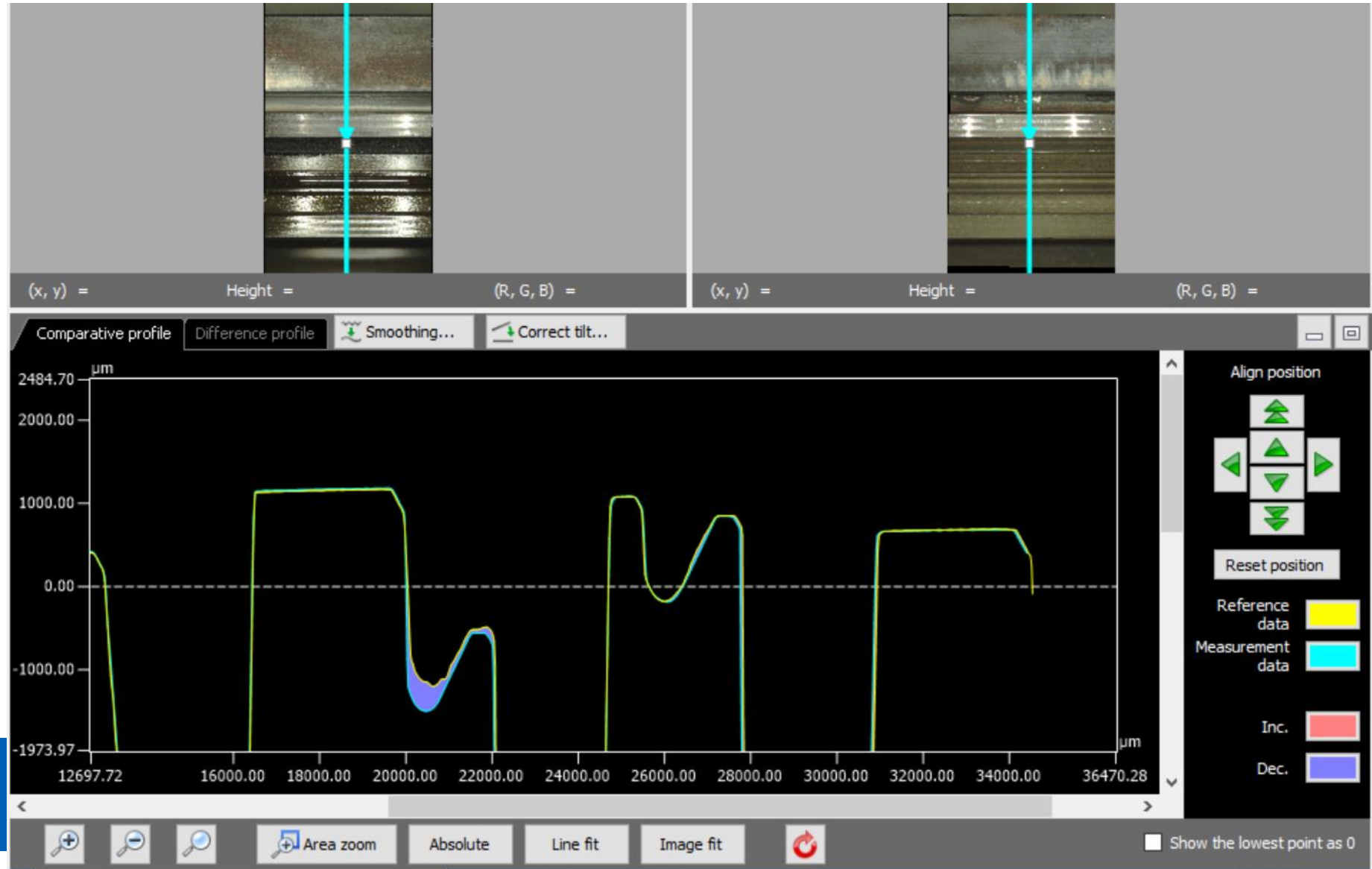
Hours	Low OC Date Code 0521	High OC Date Code 0922
0-24	25.3	48.8
24-48	18.9	45.6
48-72	22.5	41.4
72-96	25.6	34.8
96-120	25.3	20.4
120-144	4.5 (shutdown)	17.8
144-168	26.2	15.4
168-192	16.4	15.3
192-216	20.6	13.8
216-240	21.1	15.0
240-252	22.0	14.1
252-264	27.1	7.7
Reported Average	19.9	27.8
Total Average	25.4	21.8

Piston Comparison

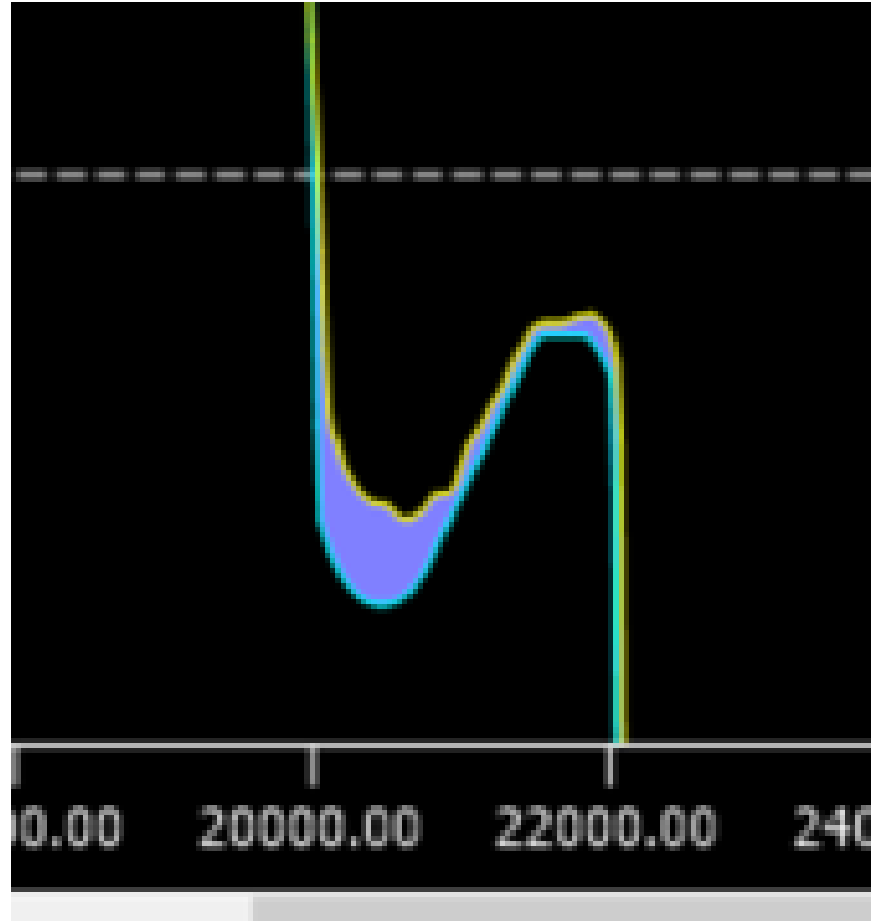


Yellow = 0521
Teal = 0922

Piston Comparison



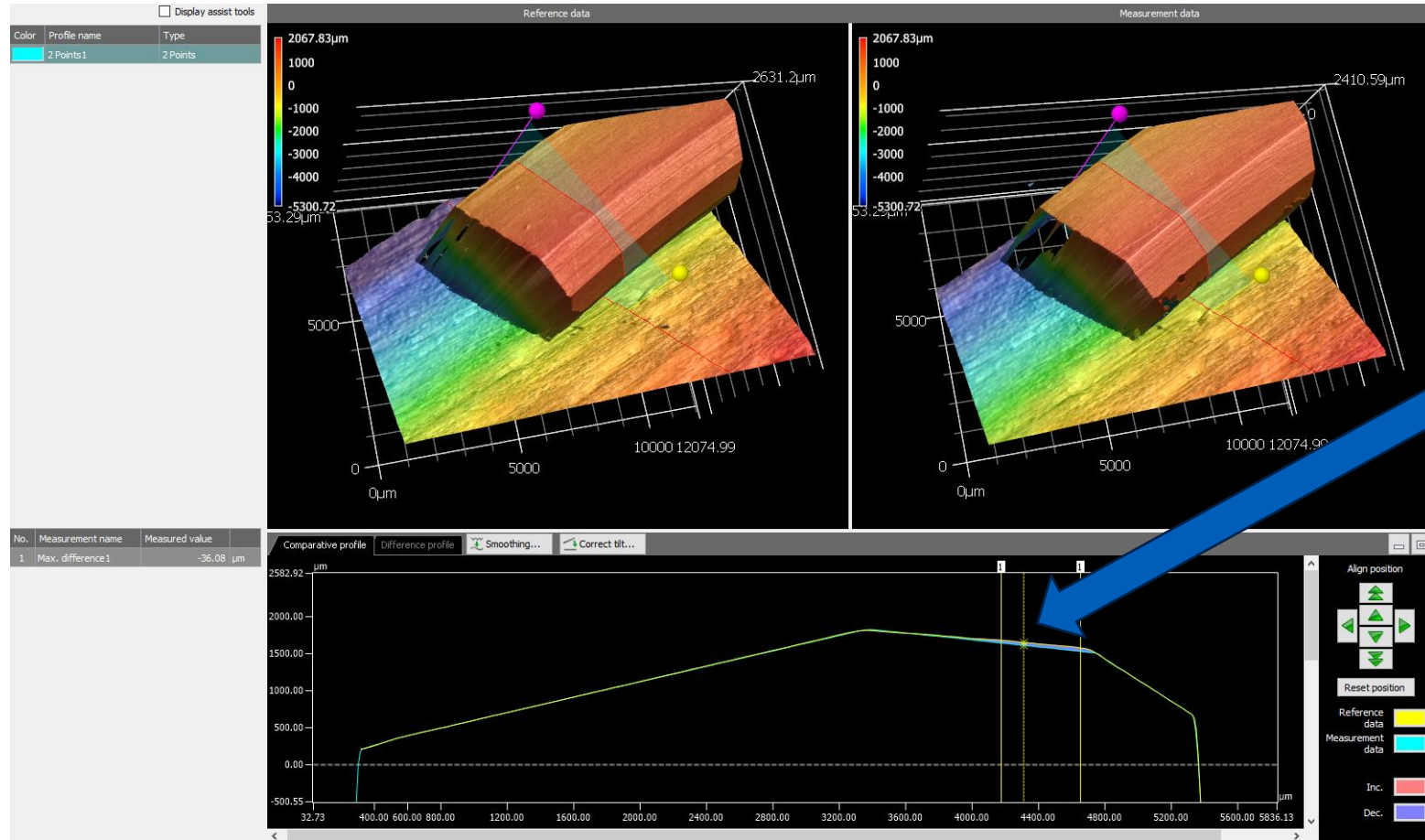
Piston Comparison



Ring Comparison (Top Ring)

Yellow = High OC
 Piston: 0922
 Ring: 964k-967k

Blue = Low OC
 Piston: 0521
 Ring: 621k-671k

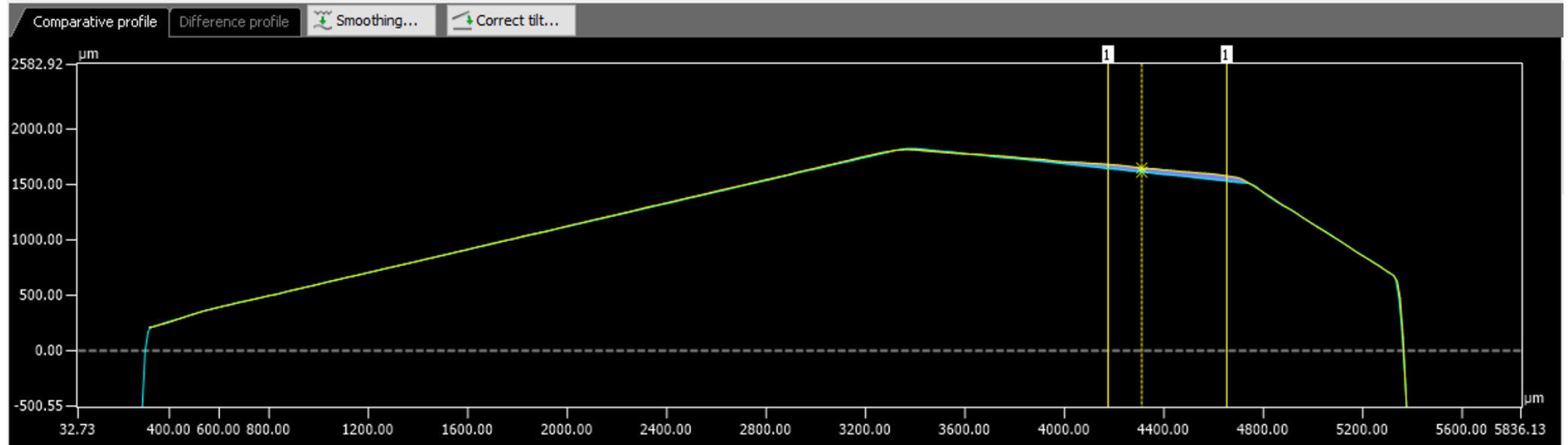


Max difference between profiles at any point -36.08 microns

Top Ring Comparison

Yellow = High
OC
Piston: 0922
Ring: 964k-
967k

Blue = Low
OC
Piston: 0521
Ring: 621k-
671k



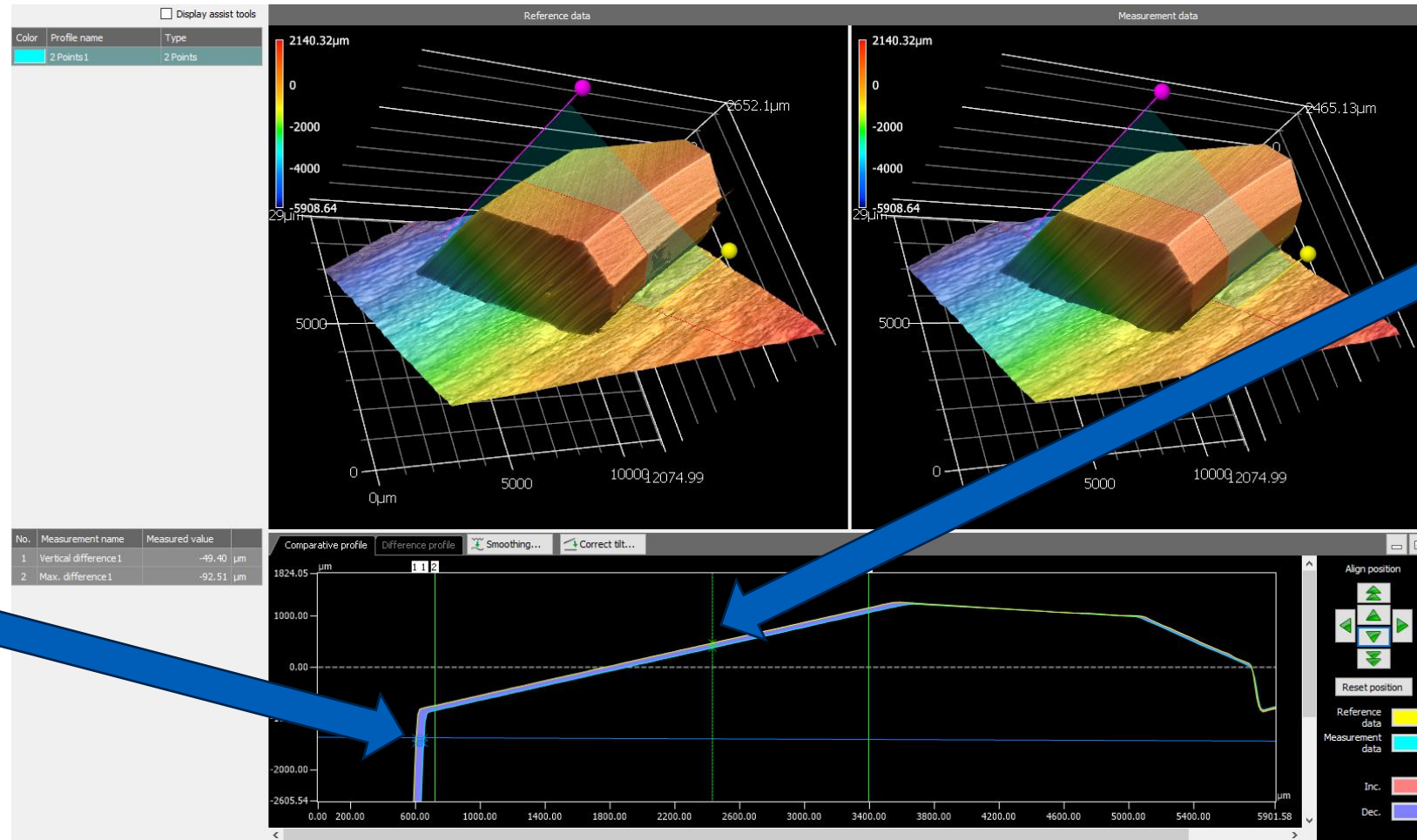
2nd Ring Comparison

Yellow = High
OC
Piston: 0922
Ring: 964k-
967k

Blue = Low
OC
Piston: 0521
Ring: 621k-
671k

Max X-axis
difference
between
profiles at
any point
-49.40
microns

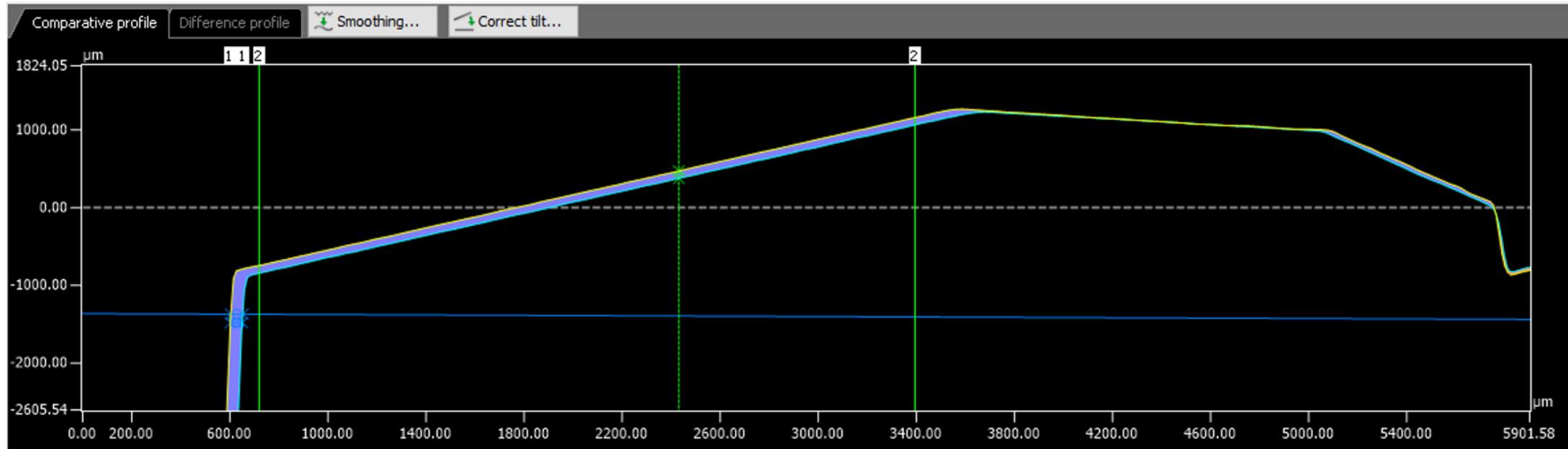
Max
difference
between
profiles at
any point
-92.51
microns



2nd Ring Comparison

Yellow = High
OC
Piston: 0922
Ring: 964k-
967k

Blue = Low
OC
Piston: 0521
Ring: 621k-
671k



Rings

Low OC

Top Ring	Serial Number	Other Information
1	4781	0000676458
2	4782	0000699785
3	4783	0000621490
4	4784	0000631196
5	4785	0000443169
6	4786	0000626484

Second Ring	Serial Number	Other Information
1	4781	0000671821
2	4782	0000621518
3	4783	0000621518
4	4784	0000621518
5	4785	0000671821
6	4786	0000621518

Oil Ring	Serial Number	Other Information
1		0000590703
2		0000697103
3		0000675162
4		0000675162
5		0000675162
6		0000697103

High OC

Top Ring	Serial Number	Other Information
1	5333	0000439234
2	5334	0000439234
3	5335	0000439234
4	5336	0000439234
5	5337	0000439234
6	5338	0000439252

Second Ring	Serial Number	Other Information
1	5333	0000467842
2	5334	0000467842
3	5335	0000464413
4	5336	0000467842
5	5337	0000464413
6	5338	0000467842

Oil Ring	Serial Number	Other Information
1		0000430331
2		0000430331
3		0000430331
4		0000430331
5		0000430331
6		0000430331