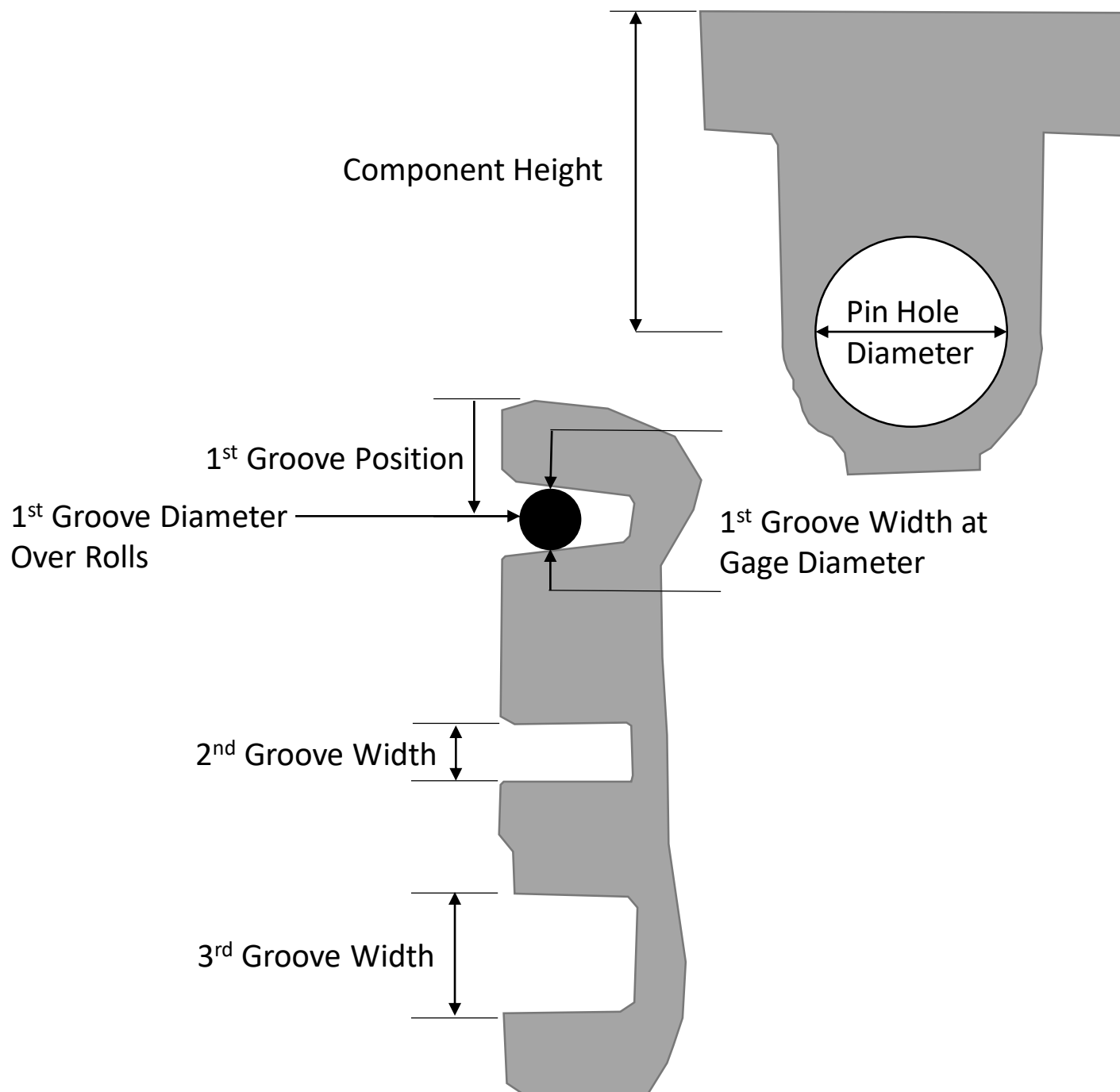
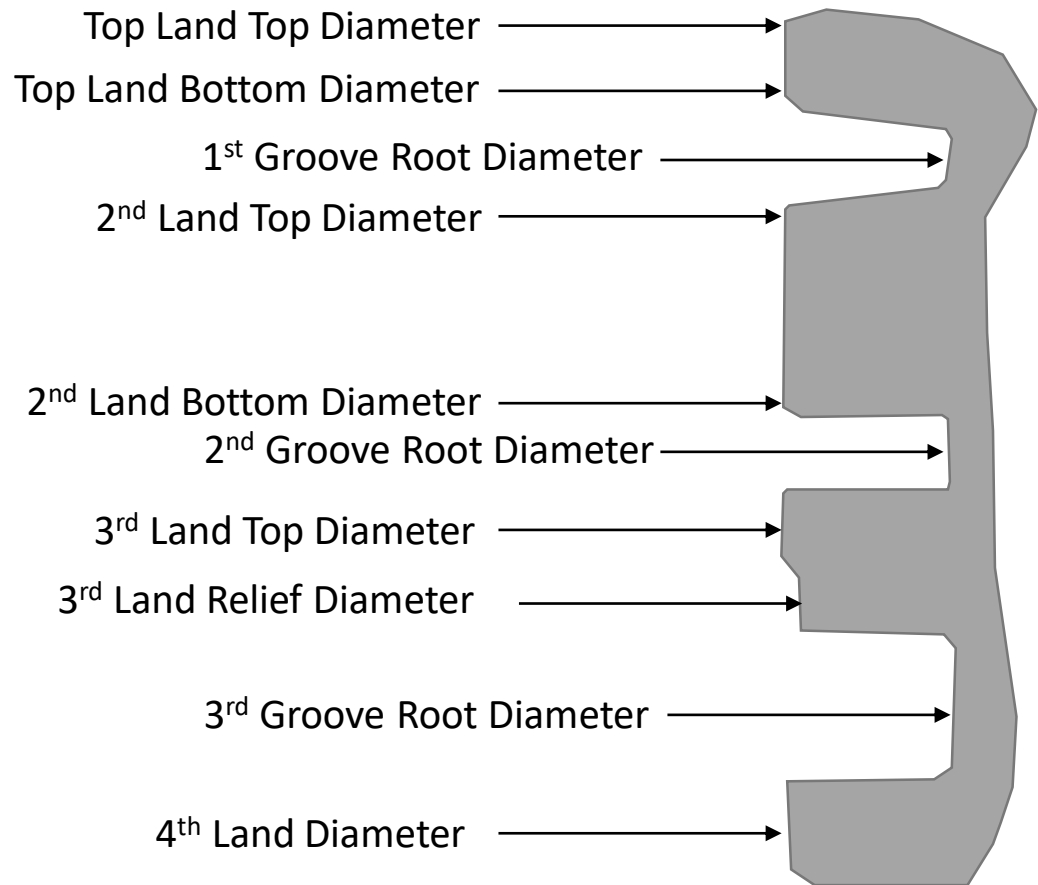


# “F” Batch Piston Crown Measurements

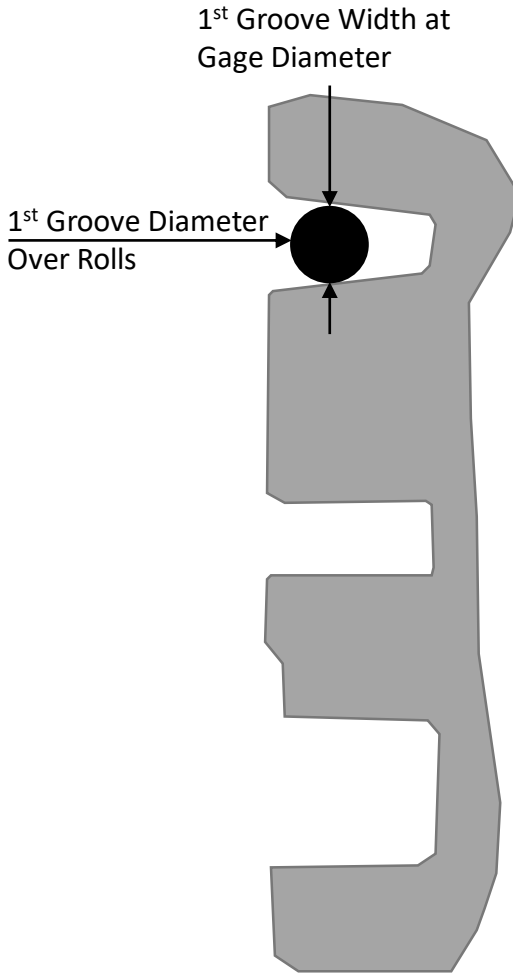
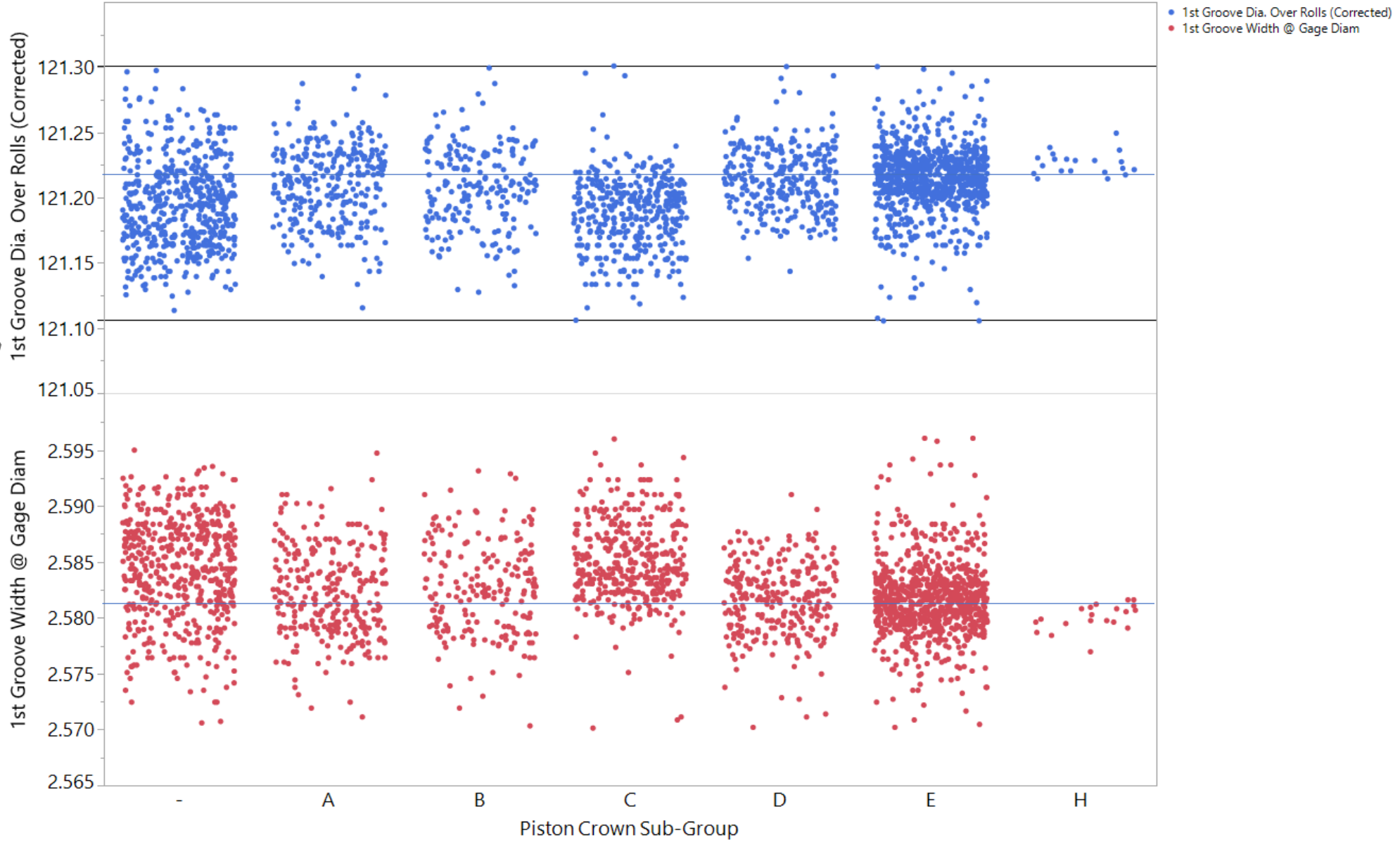
David Brass

4/22/2021



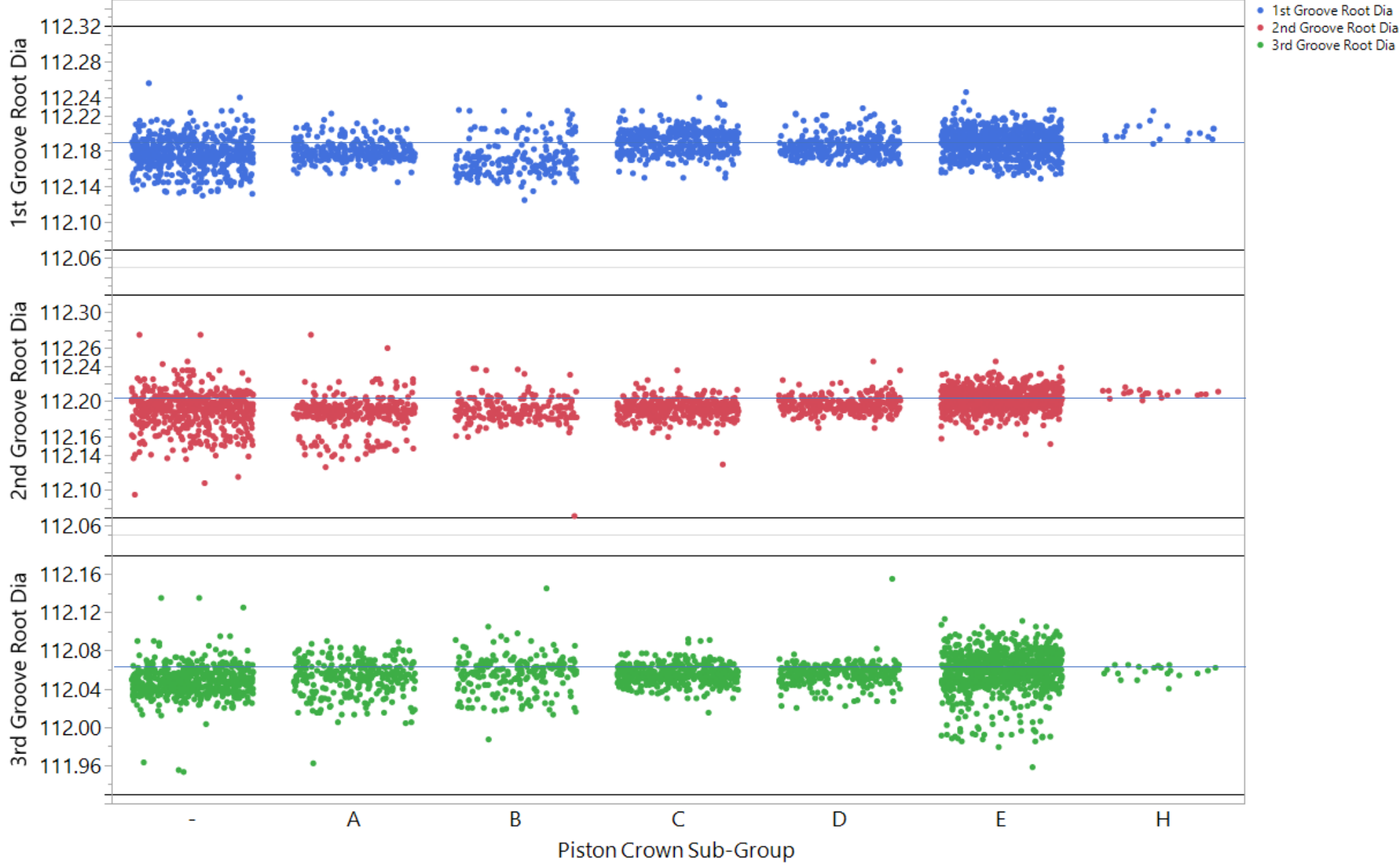
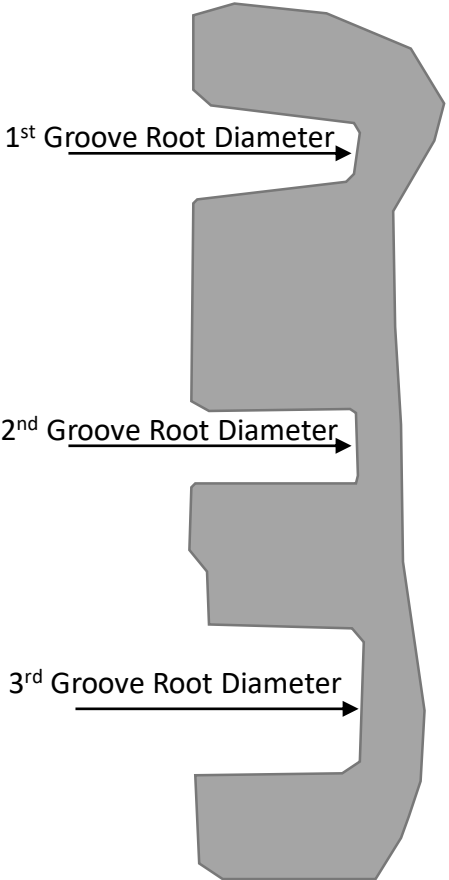
S-4940#YYY	-
S-4941#YYYA	A
S-4942#YYYB	B
S-4943#YYYC	C
S-4944#YYYD	D
S-4945#YYYE	E
S-4945#YYYH	H

1st Groove Width @ Gage Diam & 1st Groove Dia. Over Rolls (Corrected) vs. Piston Crown Sub-Group



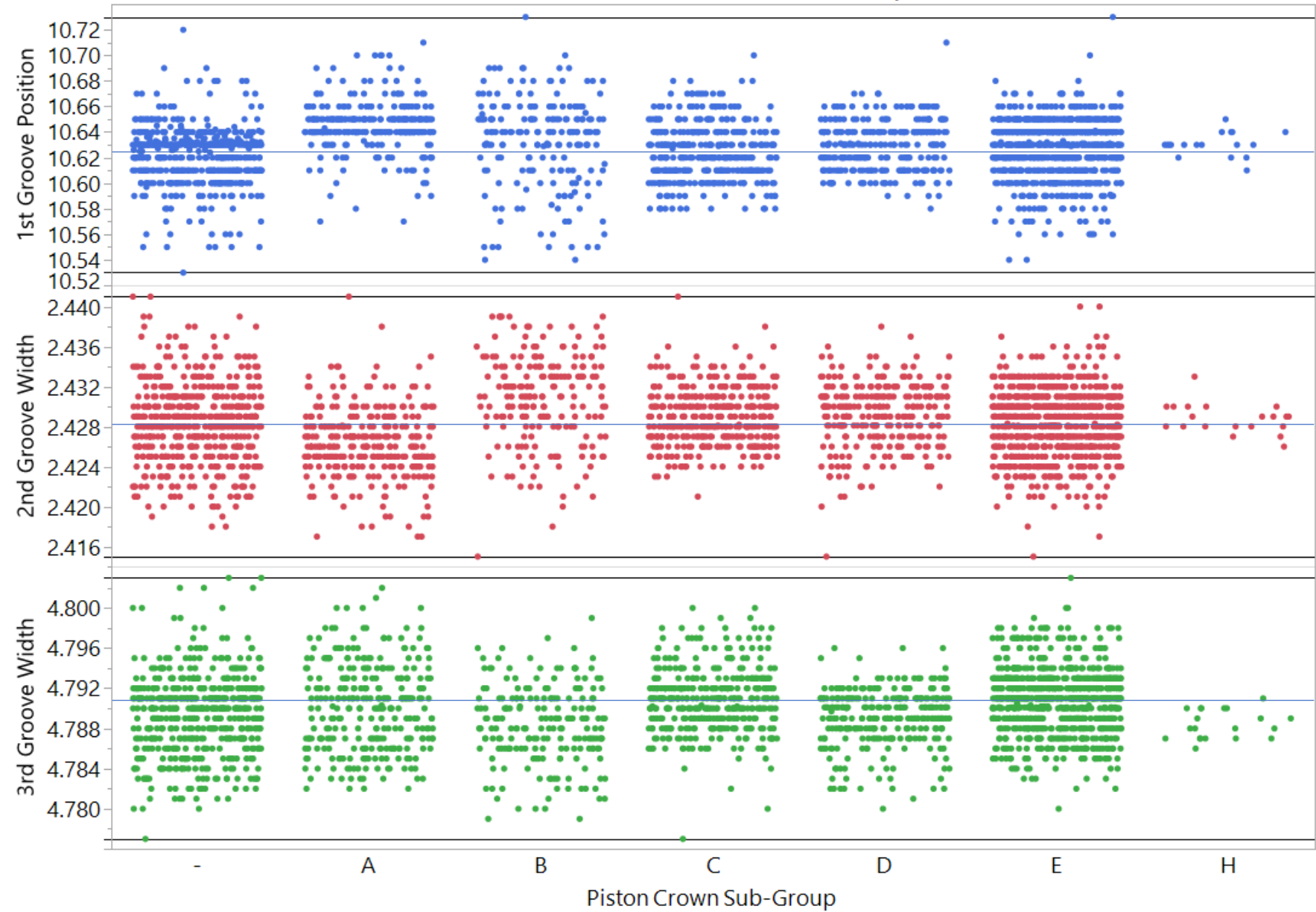
S-4940#YYY	-
S-4941#YYA	A
S-4942#YYB	B
S-4943#YYC	C
S-4944#YYD	D
S-4945#YYE	E
S-4945#YYH	H

1st Groove Root Dia & 2 more vs. Piston Crown Sub-Group

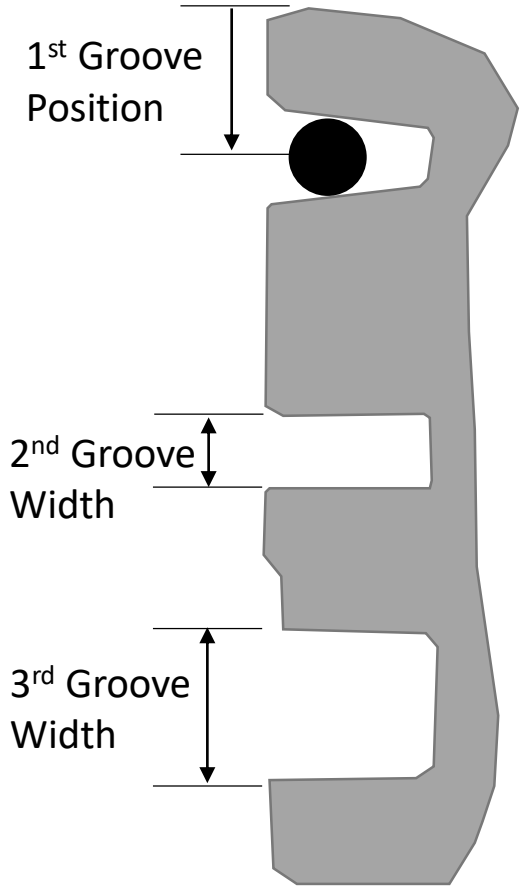


S-4940#YYY	-
S-4941#YYYA	A
S-4942#YYYB	B
S-4943#YYYC	C
S-4944#YYXD	D
S-4945#YYYE	E
S-4945#YYYH	H

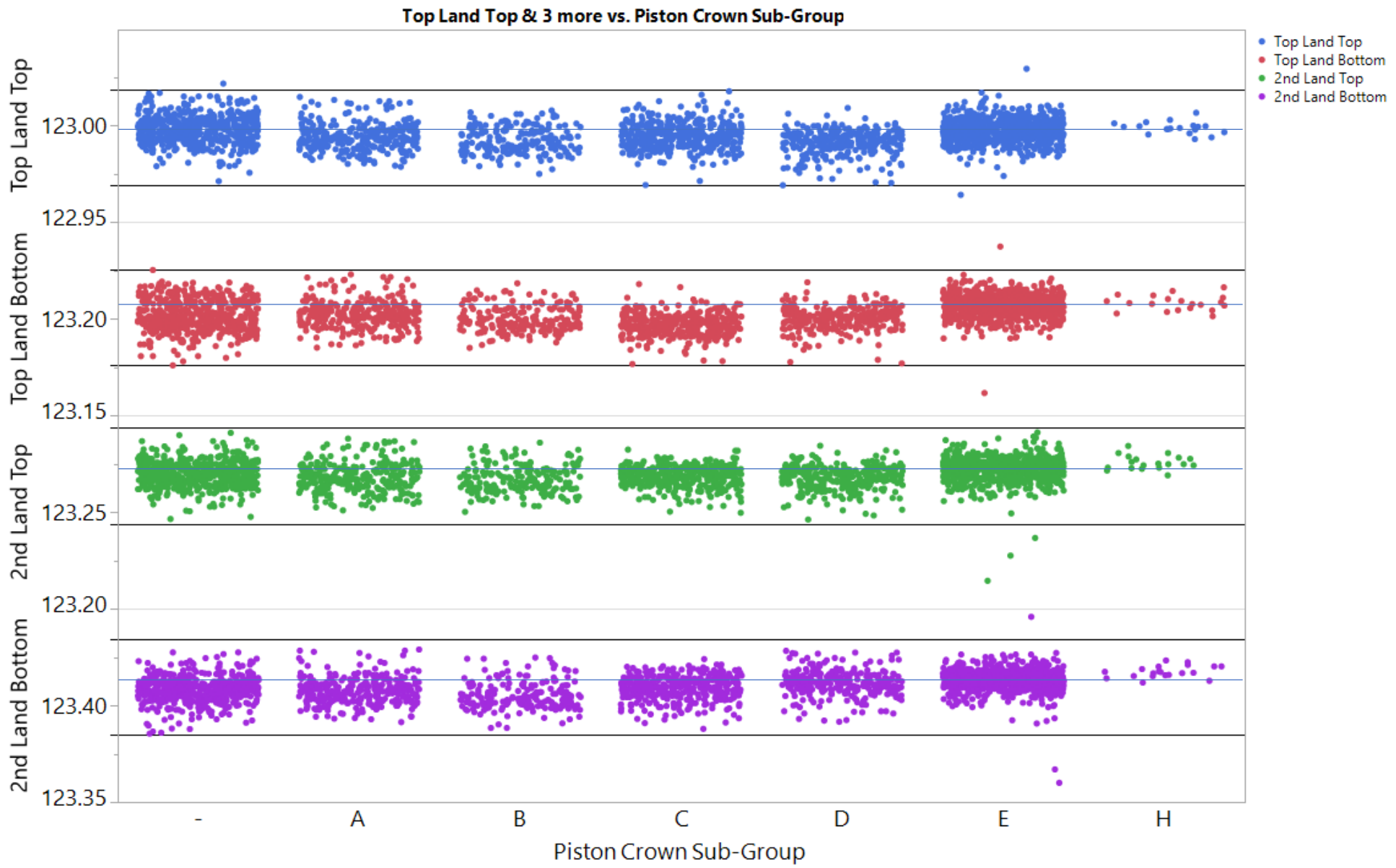
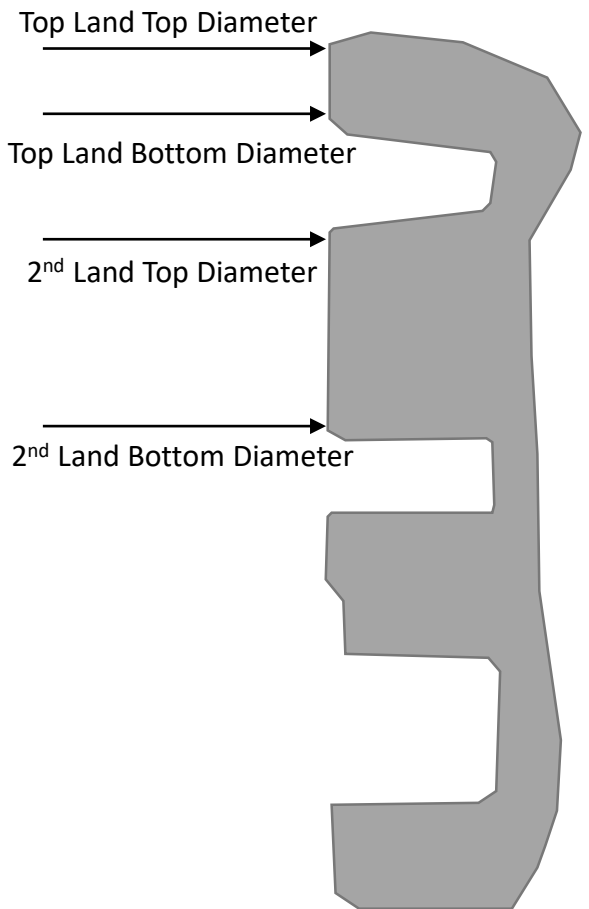
1st Groove Position & 2 more vs. Piston Crown Sub-Group



● 1st Groove Position  
 ● 2nd Groove Width  
 ● 3rd Groove Width

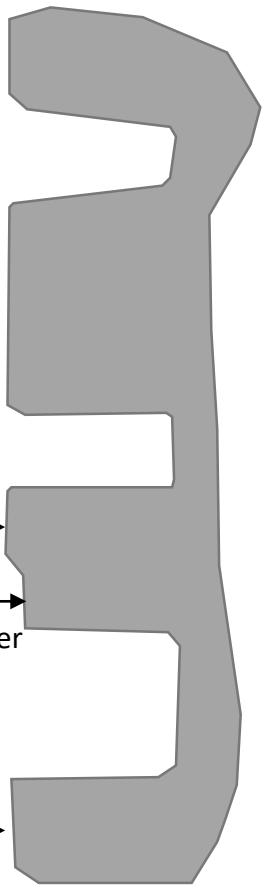
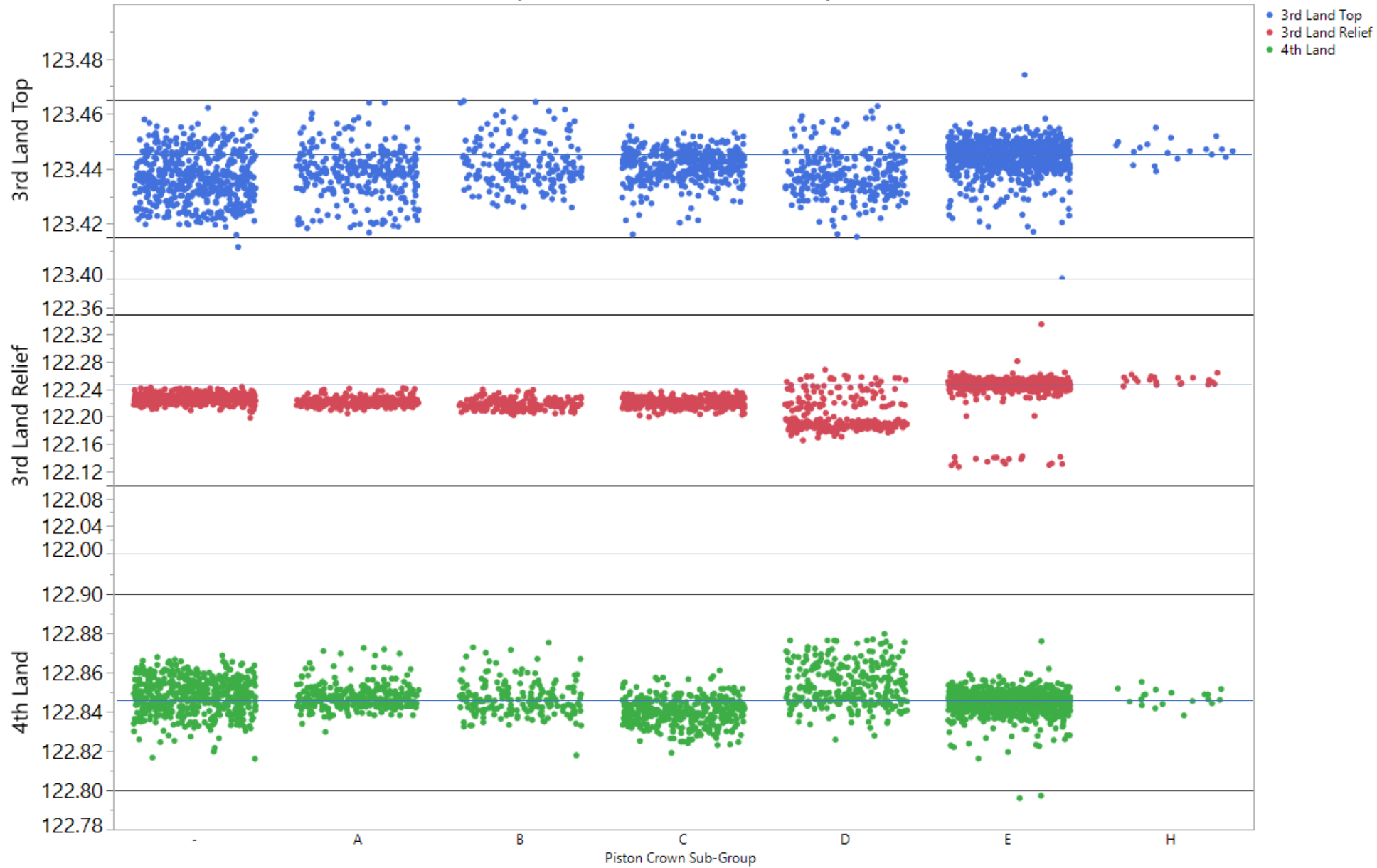


S-4940#YYY	-
S-4941#YYYA	A
S-4942#YYYB	B
S-4943#YYYC	C
S-4944#YYYD	D
S-4945#YYYE	E
S-4945#YYYH	H



S-4940#YYY	-
S-4941#YYYA	A
S-4942#YYYB	B
S-4943#YYYC	C
S-4944#YYYD	D
S-4945#YYYE	E
S-4945#YYYH	H

3rd Land Top & 2 more vs. Piston Crown Sub-Group

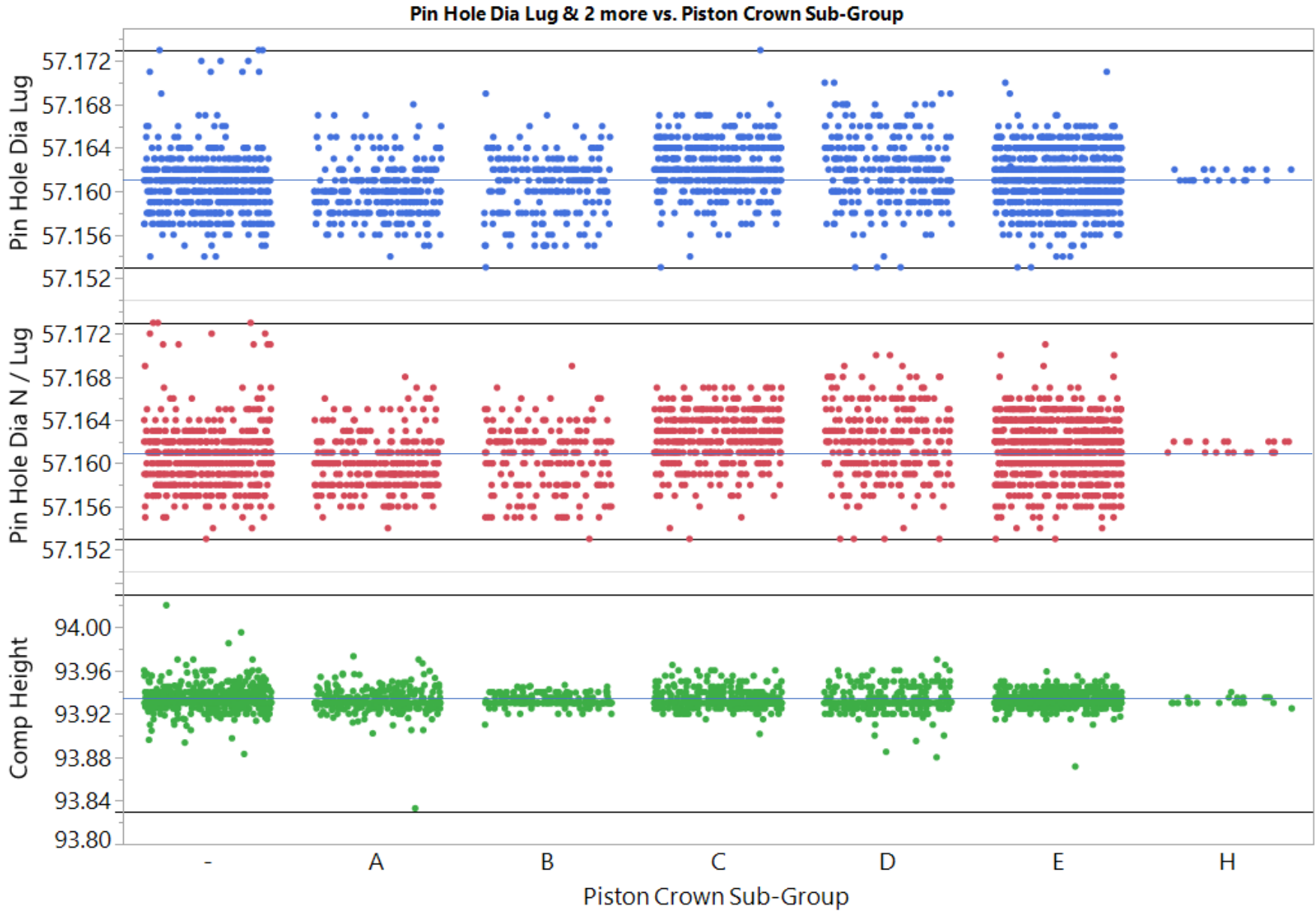


3<sup>rd</sup> Land Top Diameter

3<sup>rd</sup> Land Relief Diameter

4<sup>th</sup> Land Diameter

S-4940#YYY	-
S-4941#YYYA	A
S-4942#YYYB	B
S-4943#YYYC	C
S-4944#YYXD	D
S-4945#YYYE	E
S-4945#YYYH	H



- Pin Hole Dia Lug
- Pin Hole Dia N / Lug
- Comp Height

