

Mack T-12 Liner measurements: V batch versus W batch

12/15/2020

Performance you can rely on.



Summary

- Plotting the parts measurements by liner reveals that
 - Ra, Rk, Rvk, Rpk, MR1 and MR2 measurements for the W batch are closer to target than the Ra, Rk, Rvk, Rpk, MR1 and MR2 measurements for the V batch

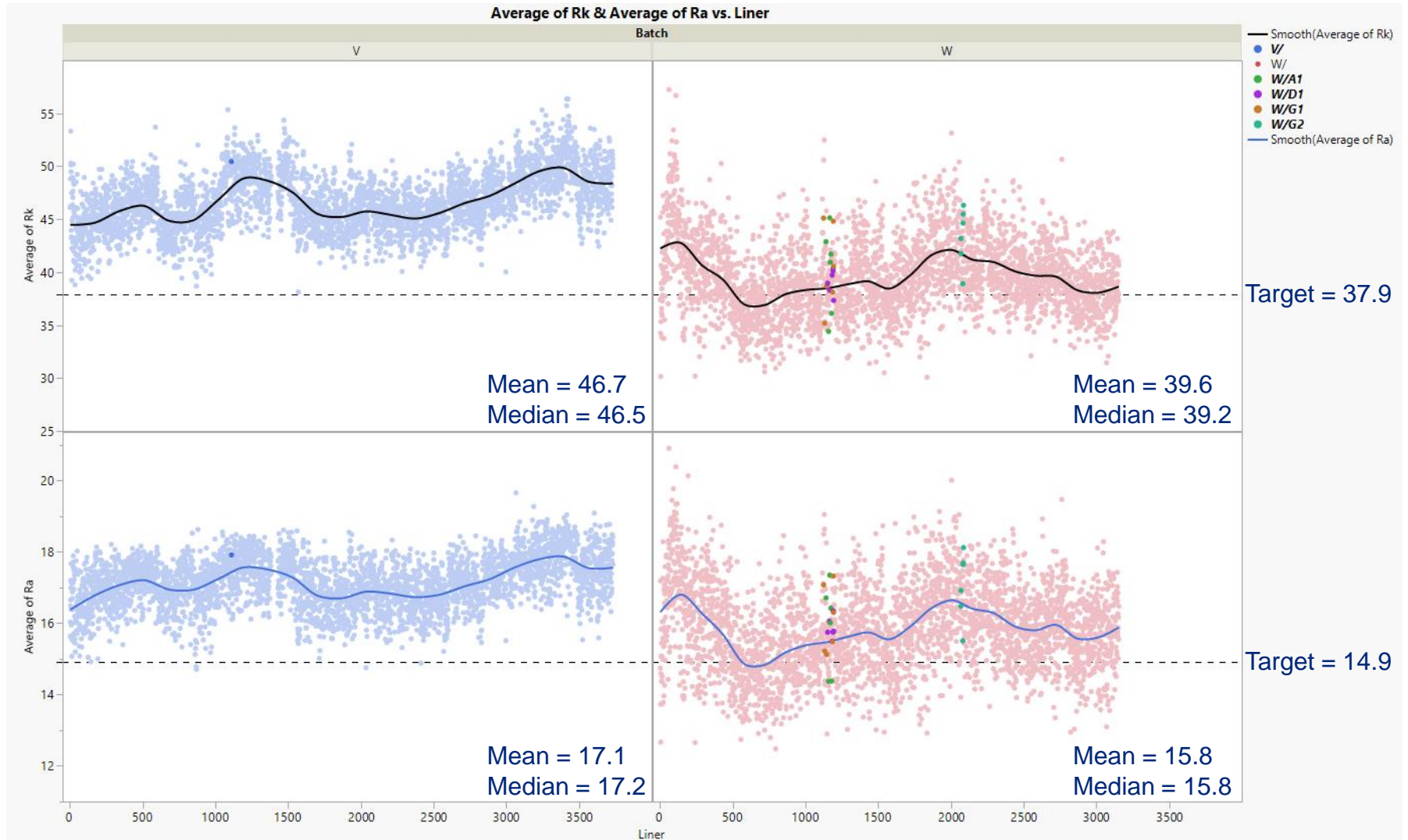
More detail: W batch measurements seem closer to target than V measurements.

Variability... data not available for W batch. Derek is working on obtaining the data

Targets are shown for each panel, except VO

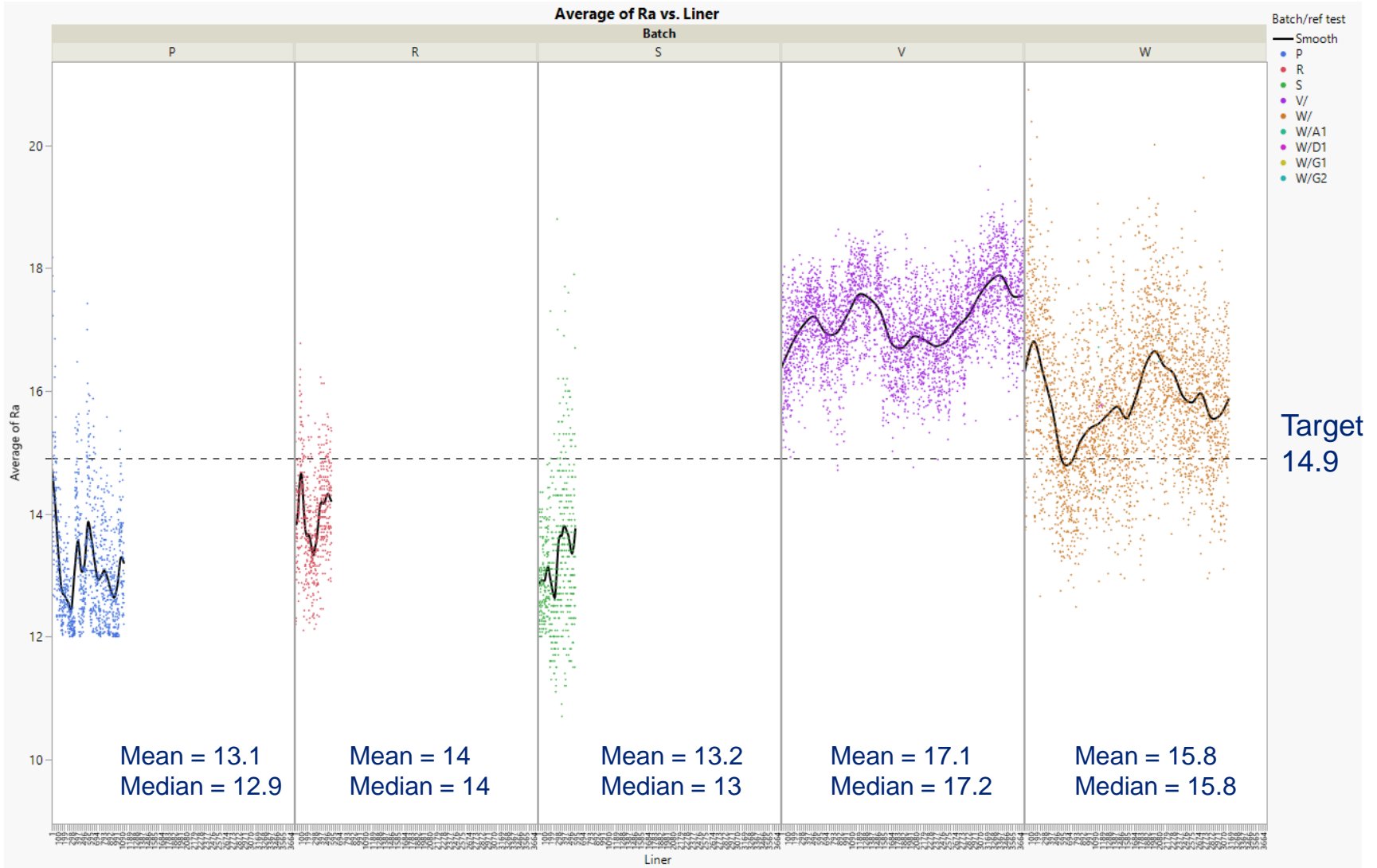
Points highlighted under W batch correspond to the parts used in the reference calibration tests

Each panel is a type of measurement versus liner ID
 Left side of the plot corresponds to V batch
 Right side of the plot corresponds to W batch

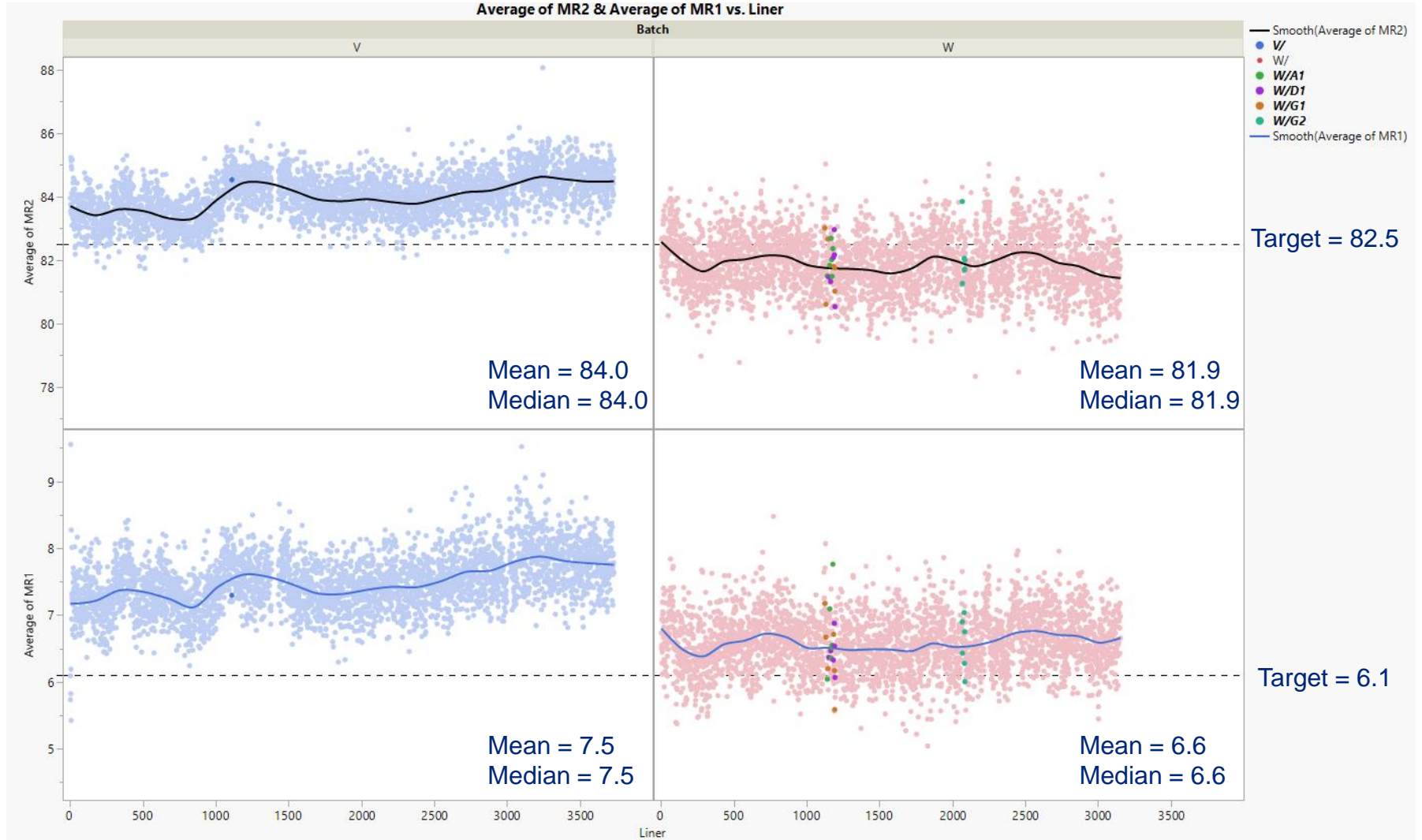


Ra: Each panel corresponds to a liner batch

More data became available for Ra

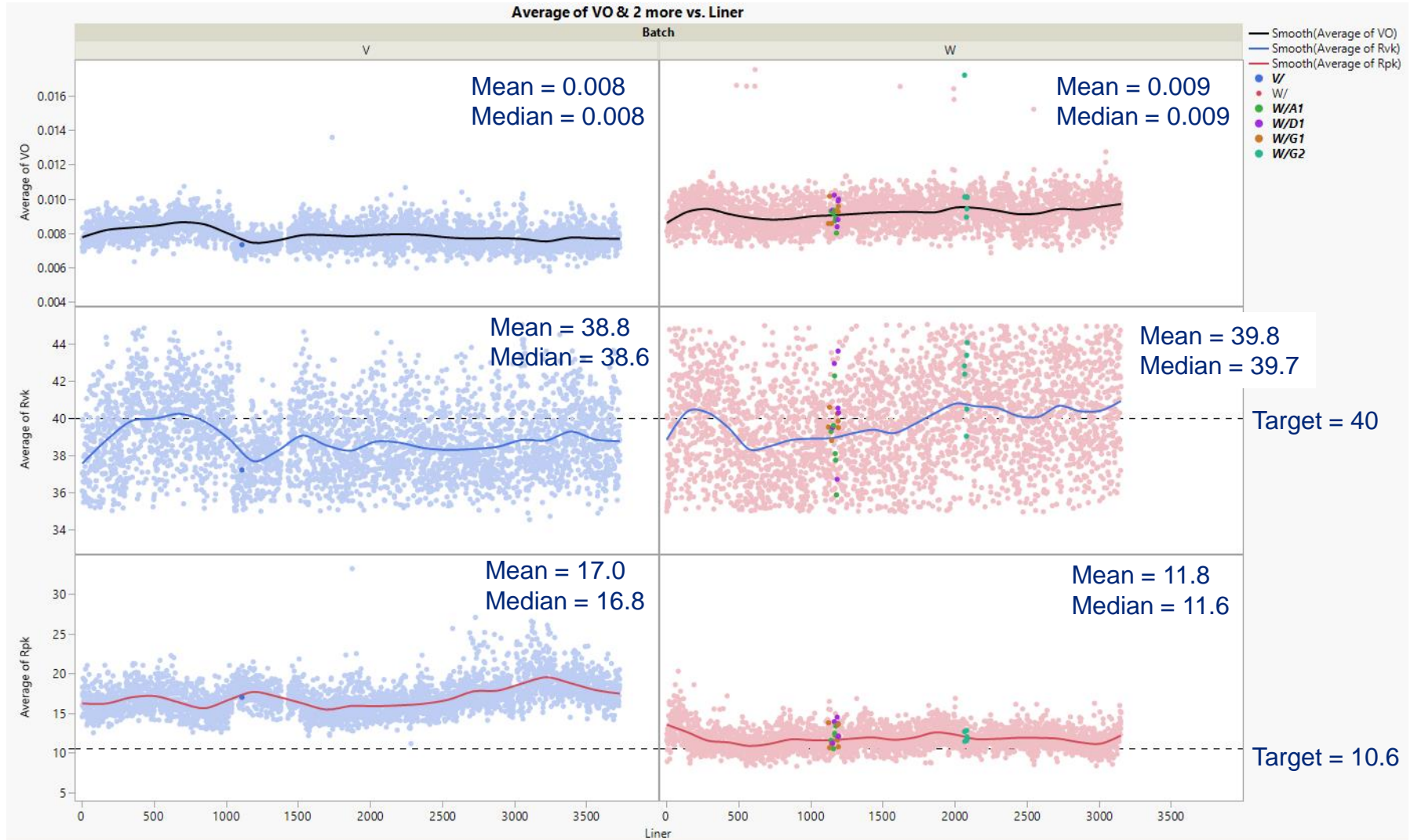


Each panel is a type of measurement versus liner ID
 Left side of the plot corresponds to V batch
 Right side of the plot corresponds to W batch

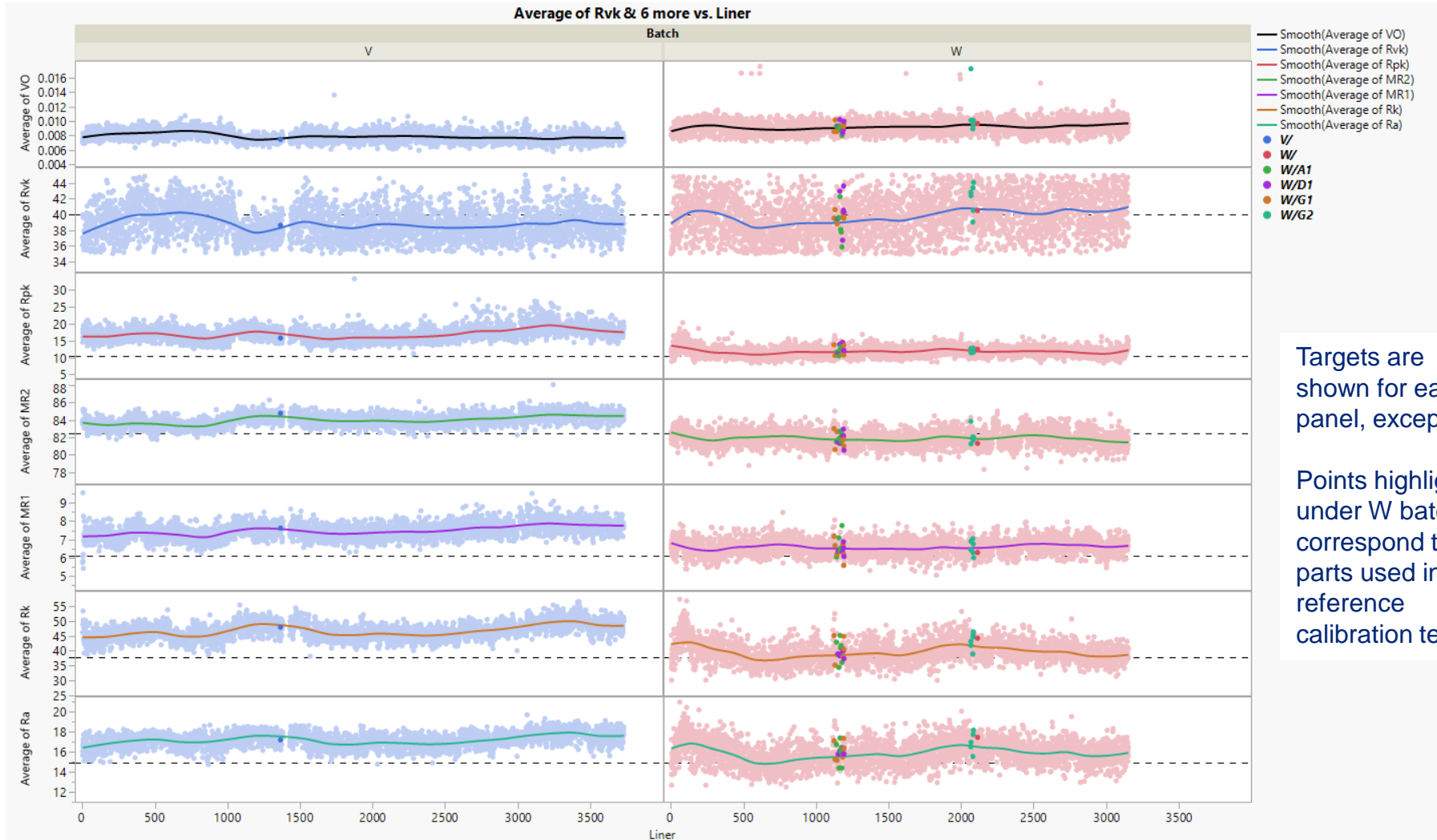


Each panel is a type of measurement versus liner ID

Left side of the plot corresponds to V batch
 Right side of the plot corresponds to W batch



Each panel is a type of measurement versus liner ID
 Left side of the plot corresponds to V batch
 Right side of the plot corresponds to W batch



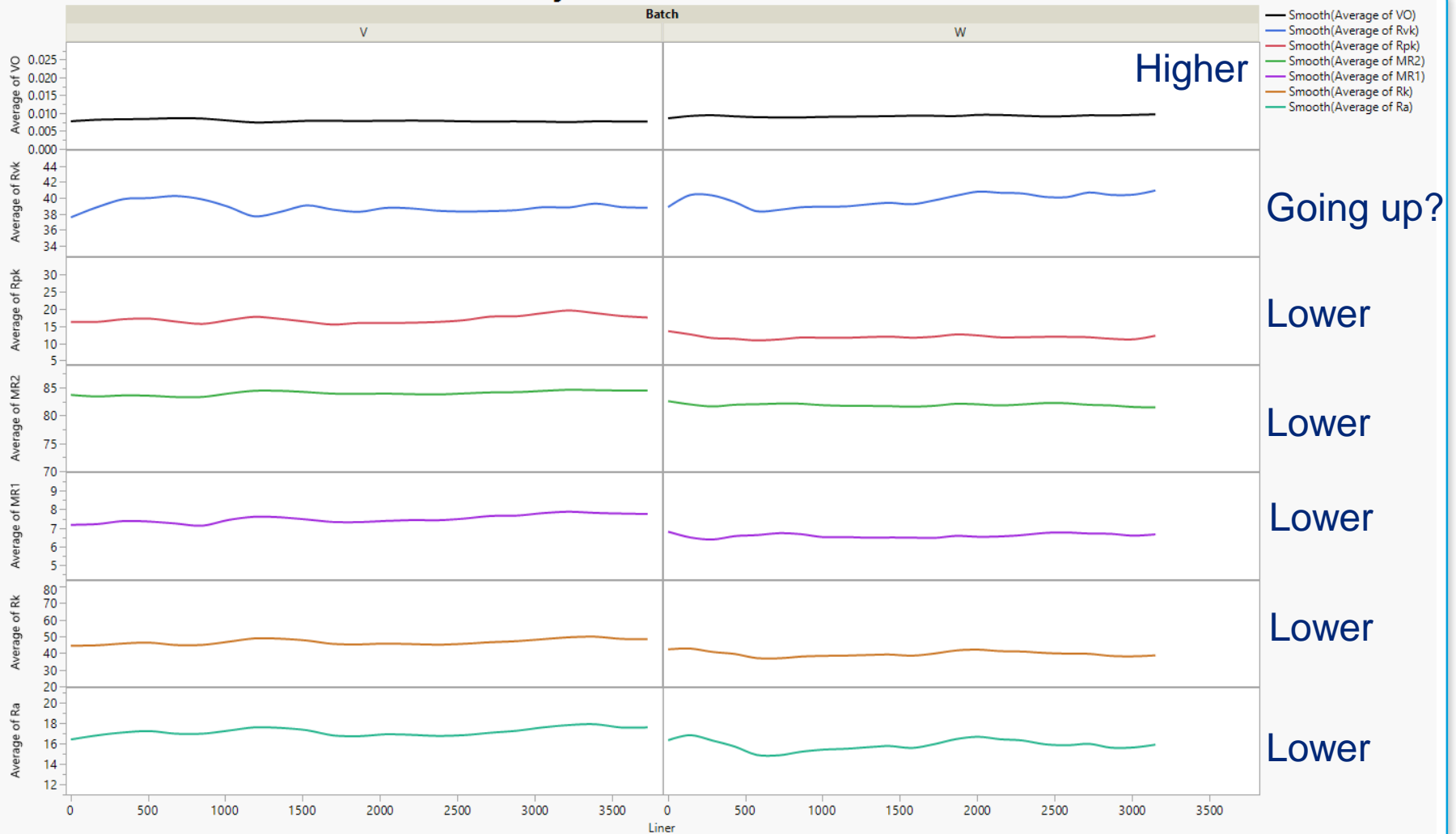
Targets are shown for each panel, except VO

Points highlighted under W batch correspond to the parts used in the reference calibration tests

Visualizing differences between V and W batches (smoothers/trends ONLY)



Average of Rvk & 6 more vs. Liner



W batch liners are smoother and have a higher well volume than V batch

Permission is given for storage of one copy in electronic means for reference purposes. Further reproduction of any material is prohibited without prior written consent of Infineum International Limited.

The information contained in this document is based upon data believed to be reliable at the time of going to press and relates only to the matters specifically mentioned in this document. Although Infineum has used reasonable skill and care in the preparation of this information, in the absence of any overriding obligations arising under a specific contract, no representation, warranty (express or implied), or guarantee is made as to the suitability, accuracy, reliability or completeness of the information; nothing in this document shall reduce the user's responsibility to satisfy itself as to the suitability, accuracy, reliability, and completeness of such information for its particular use; there is no warranty against intellectual property infringement; and Infineum shall not be liable for any loss, damage or injury that may occur from the use of this information other than death or personal injury caused by its negligence. No statement shall be construed as an endorsement of any product or process. For greater certainty, before use of information contained in this document, particularly if the product is used for a purpose or under conditions which are abnormal or not reasonably foreseeable, this information must be reviewed with the supplier of such information.

Links to third party websites from this document are provided solely for your convenience. Infineum does not control and is not responsible for the content of those third party websites. If you decide to access any of those websites, you do so entirely at your own risk. Please also refer to our Privacy Policy.

'INFINEUM', the interlocking Ripple Device, the corporate mark comprising INFINEUM and the interlocking Ripple Device and 润英联 are trademarks of Infineum International Limited.

© 2020 Infineum International Limited. All rights reserved.