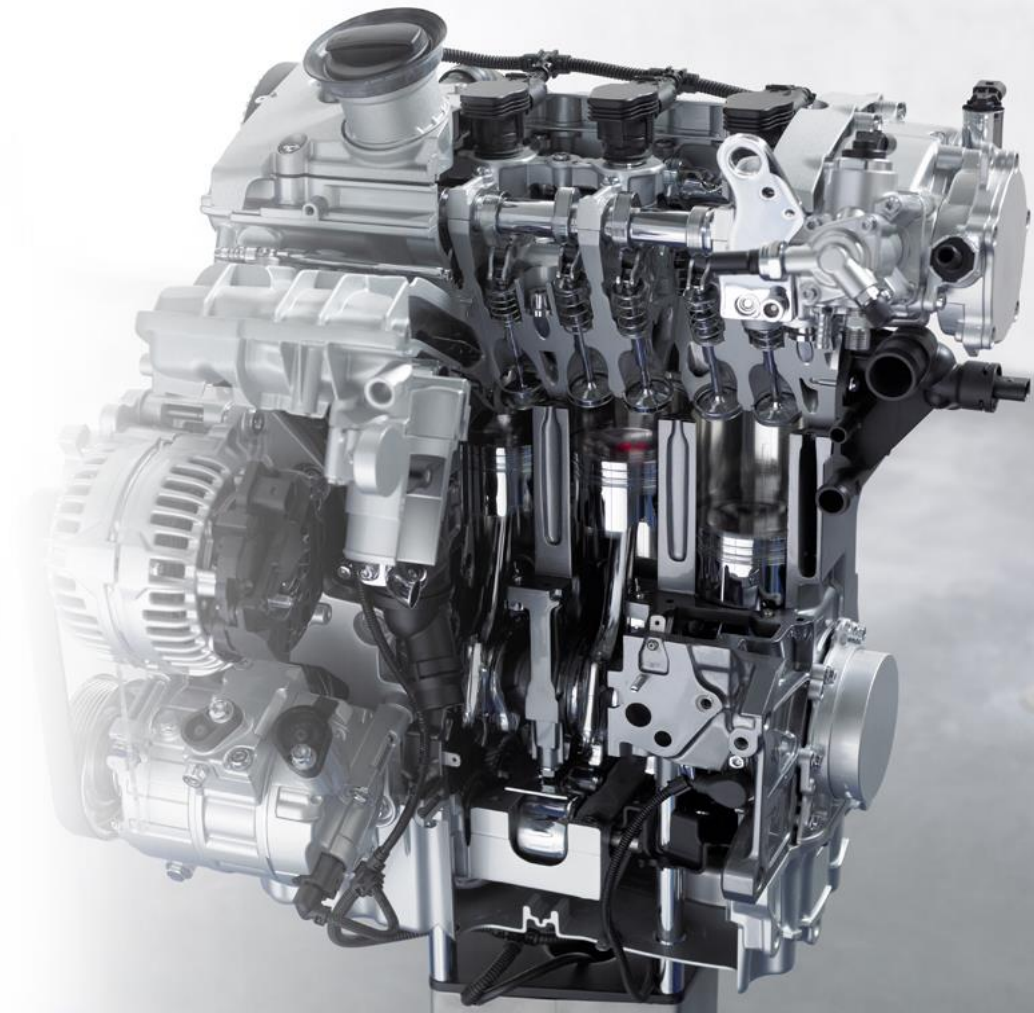
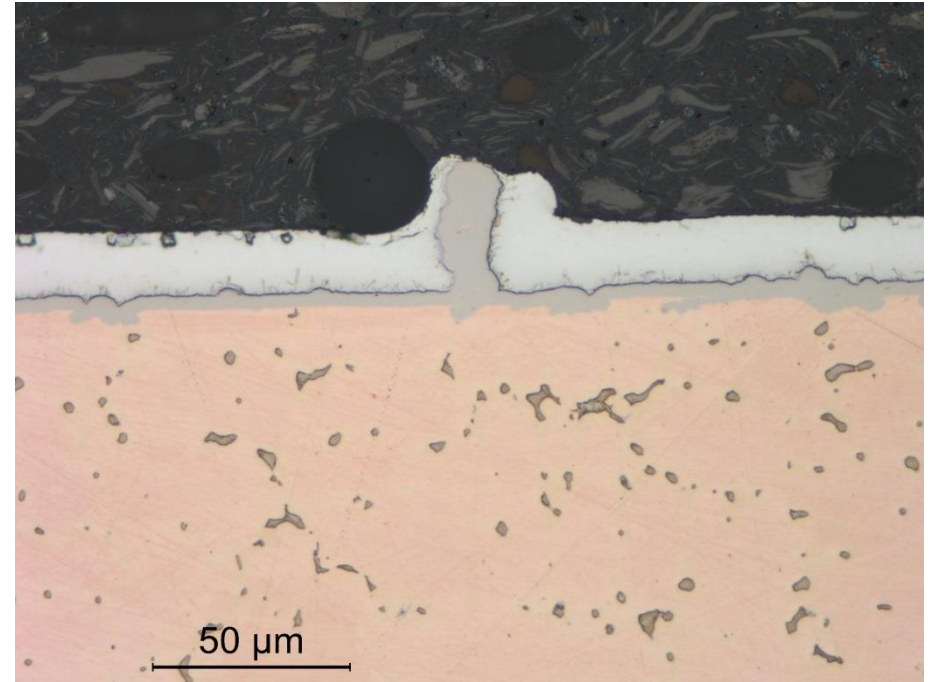
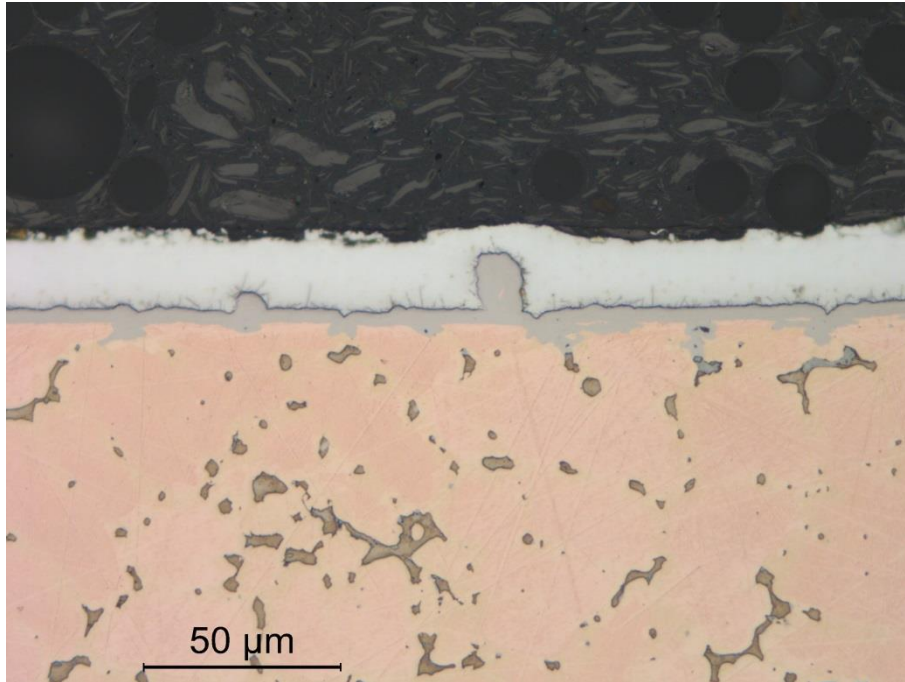


19R-04-14 Volvo Nodules

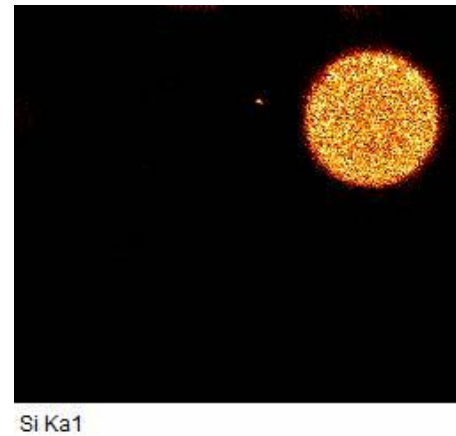
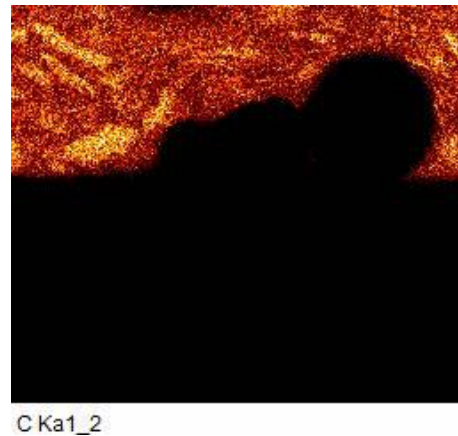
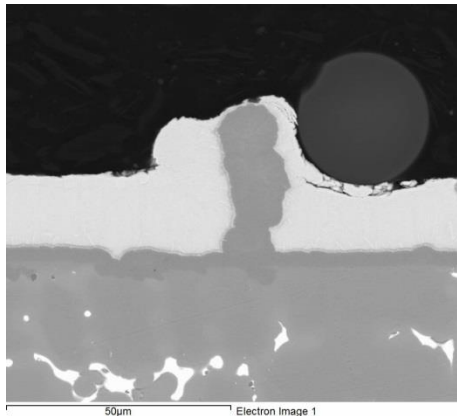
Rob Cumming

EDE2ML

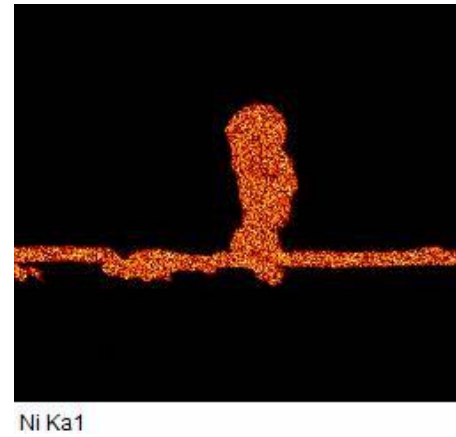
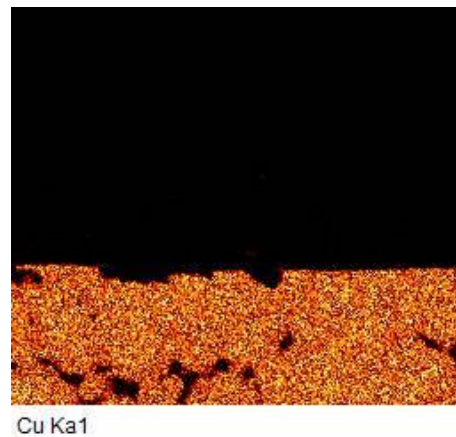
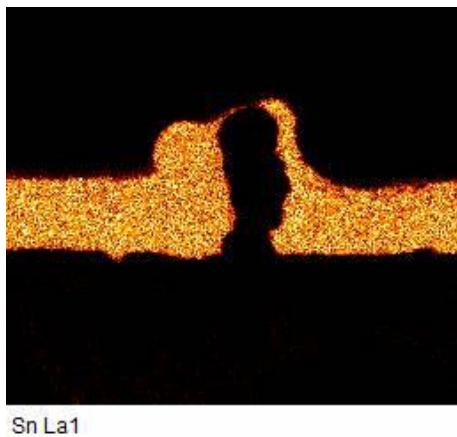


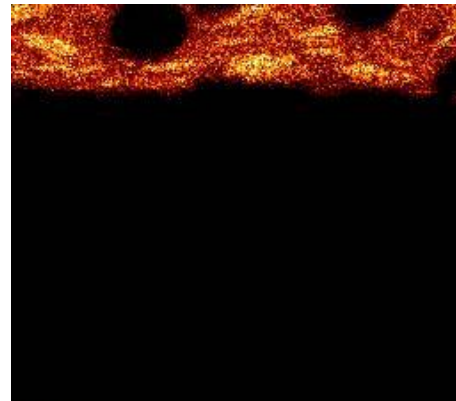
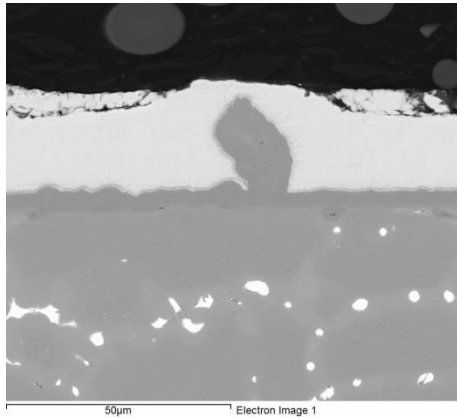


- Nodules were seen beneath the tin overlay.
 - In the image on the right, the nickel does not quite manage to penetrate to the surface
 - Our mounting process does tend to damage tin overlays

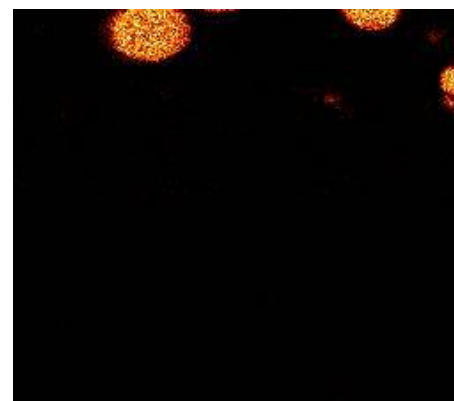


- Nickel nodule underneath tin overlay, almost penetrating the surface

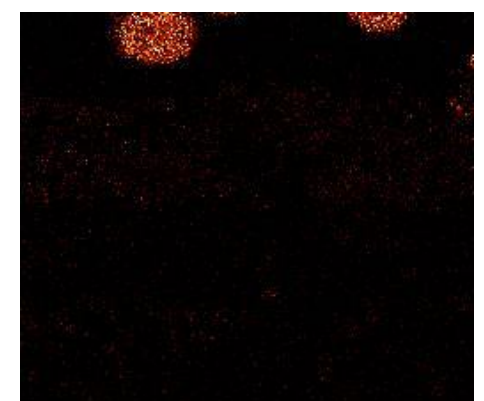




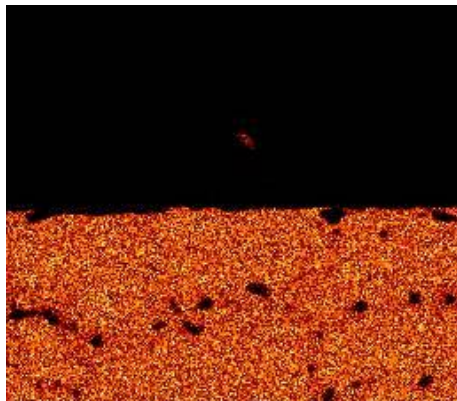
C Ka1_2



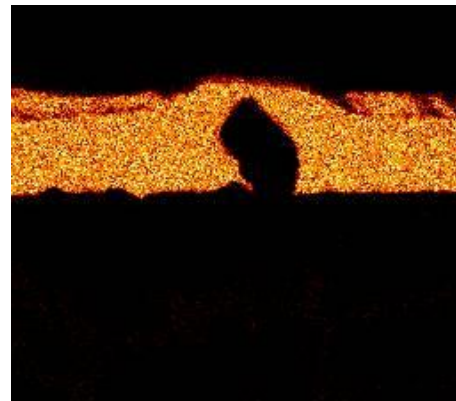
Si Ka1



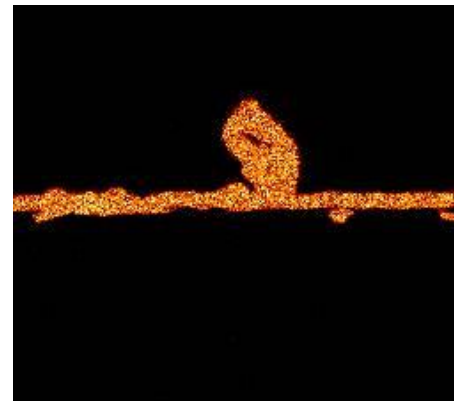
Al Ka1



Cu Ka1



Sn La1



Ni Ka1

■ Nickel nodule
seen underneath
the tin overlay