



Oronite

Mack T12 LTMS20150714 New Pistons and ICF Review

Jim Rutherford

07/31/2015

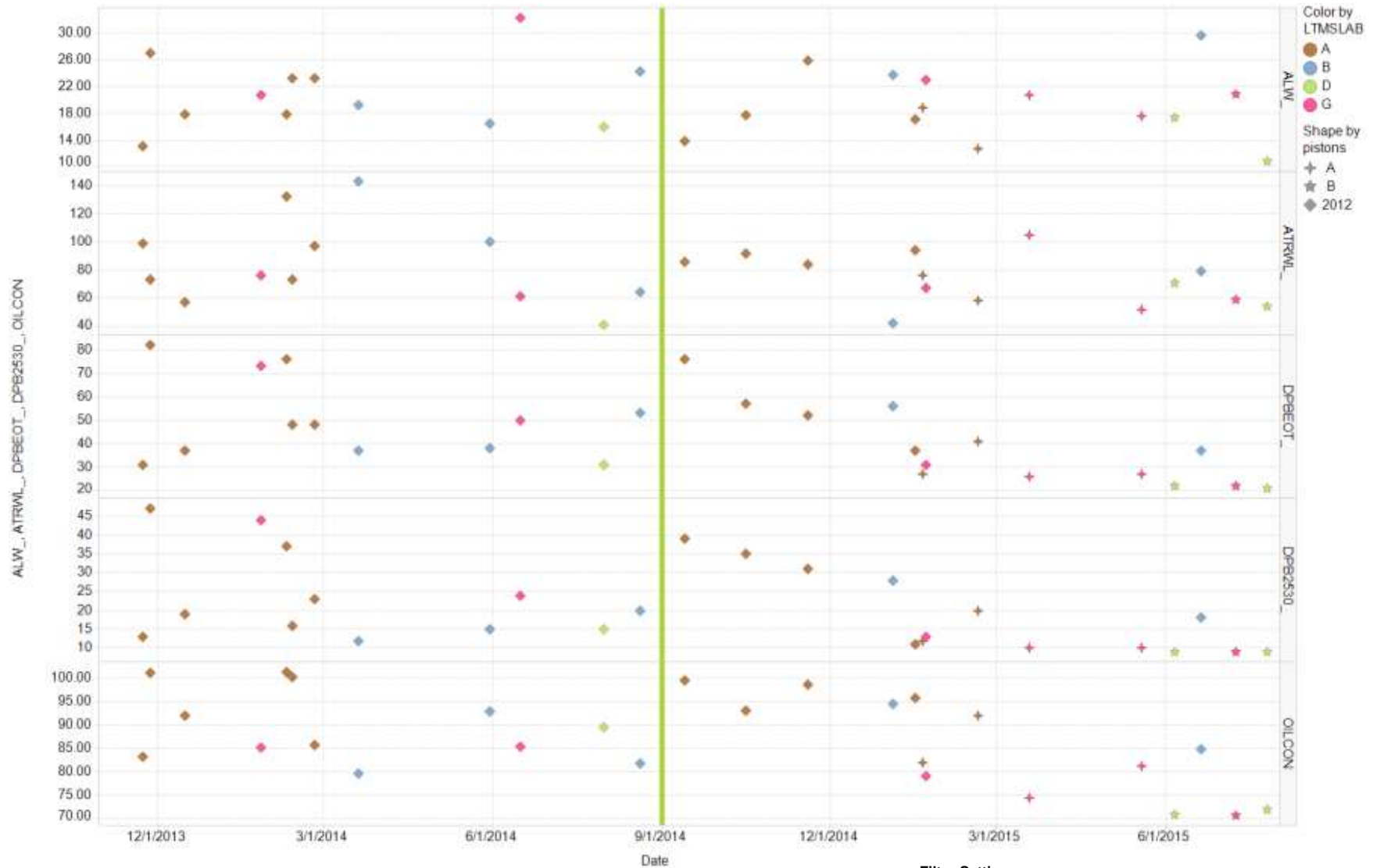


Contents

- **Views of the data**
 - **Reference data again with one more new test**
 - **Candidate data**
- **ICFs?**

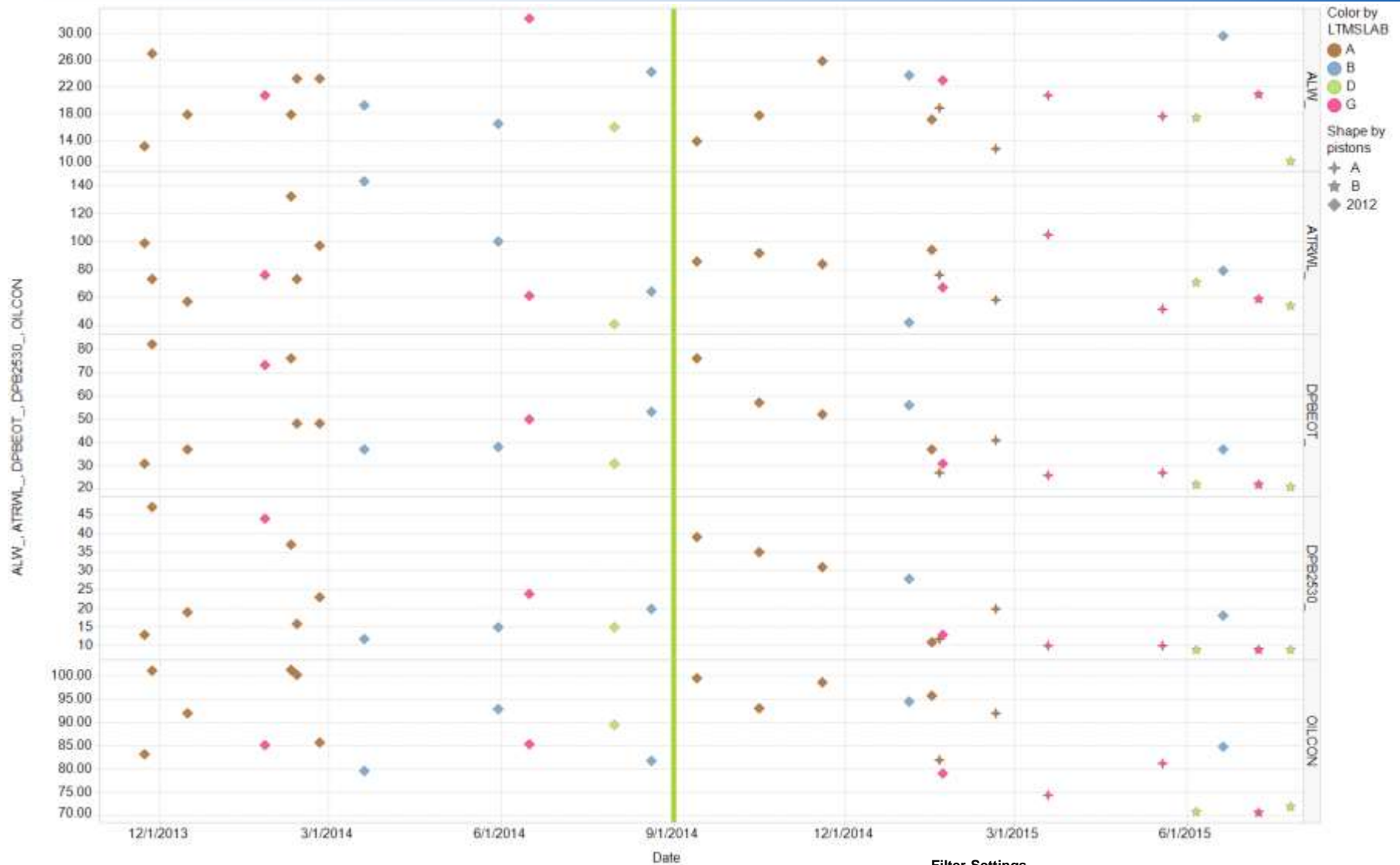


Reference Data



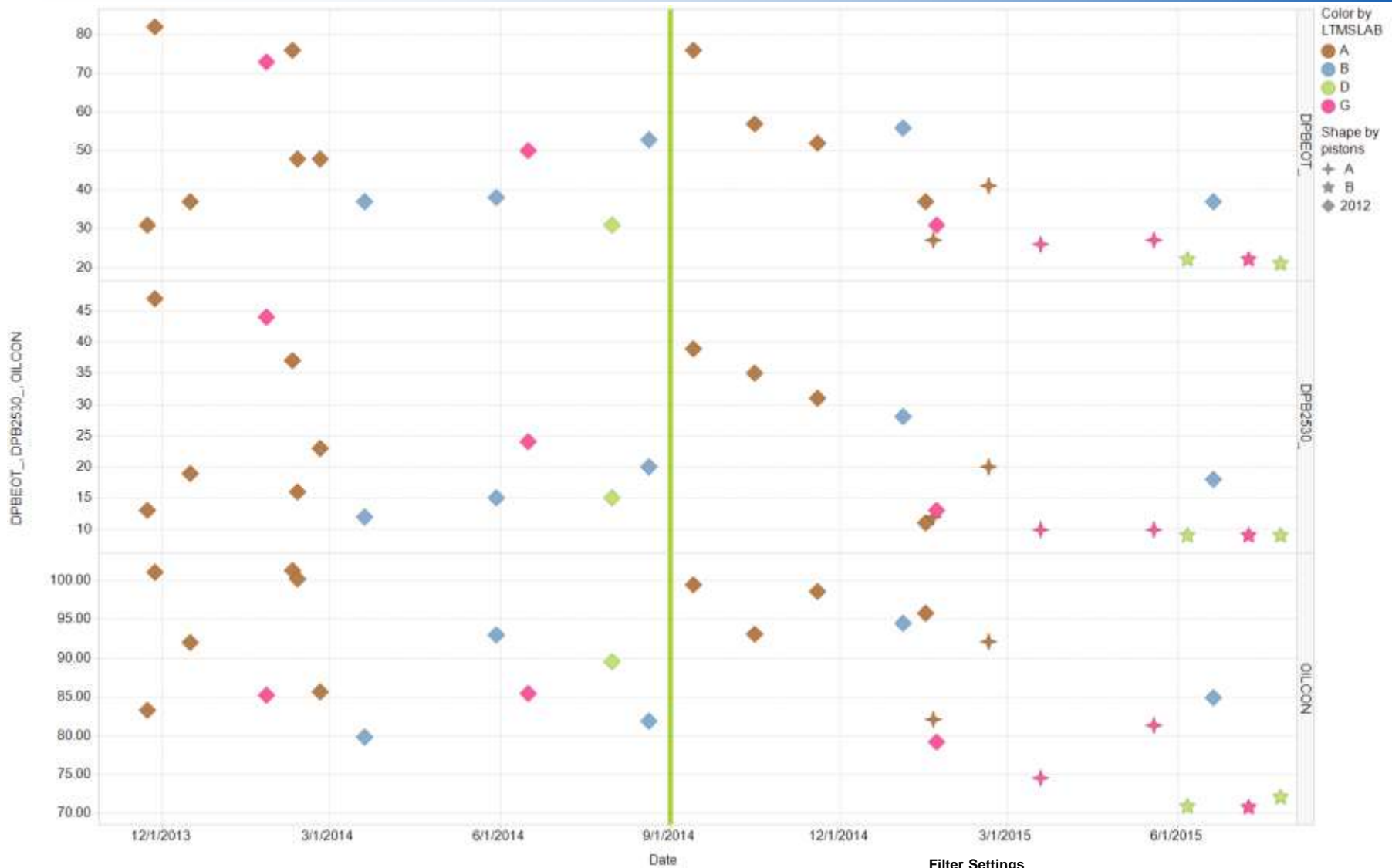


Reference Data



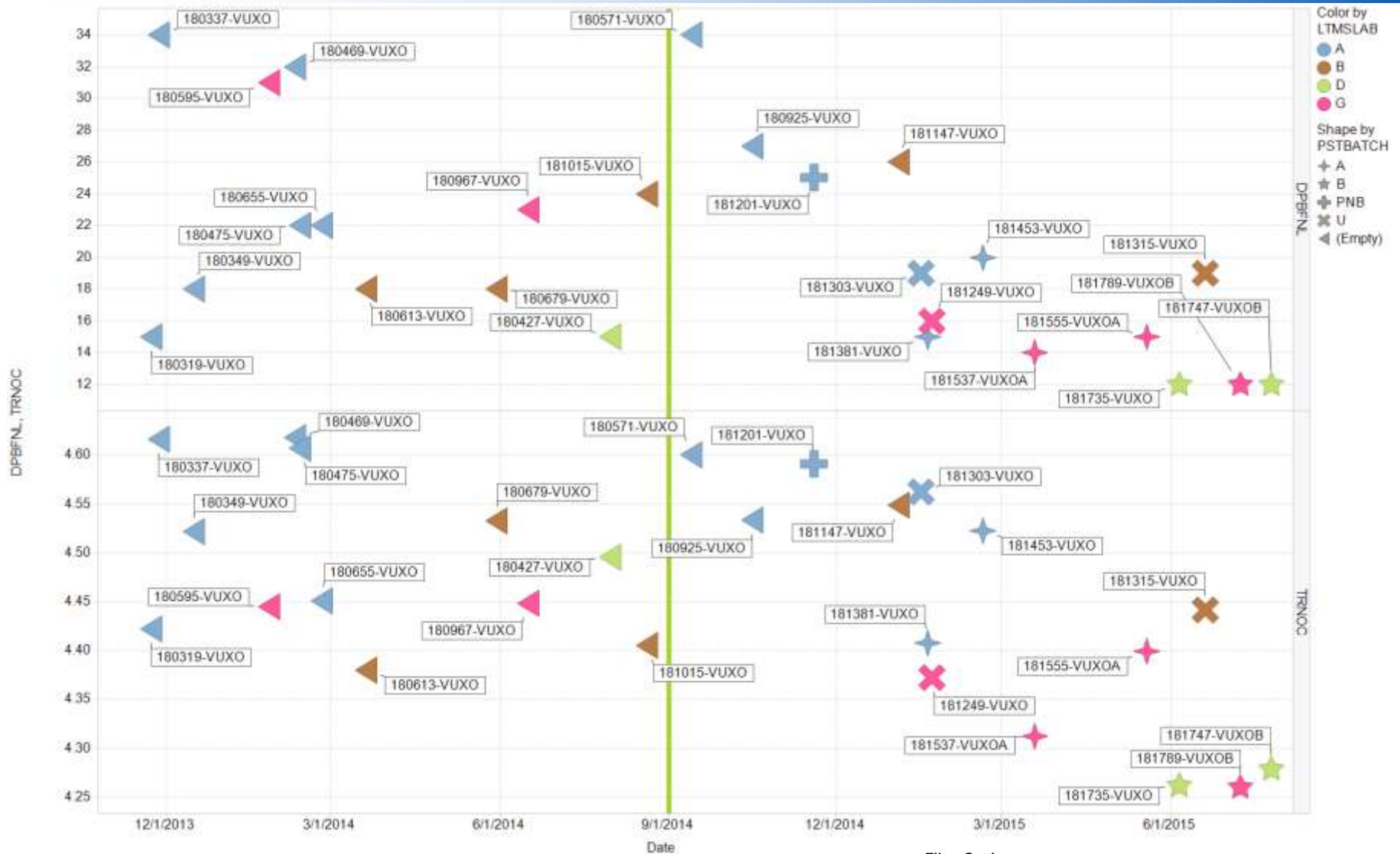


Reference Data





Reference Data



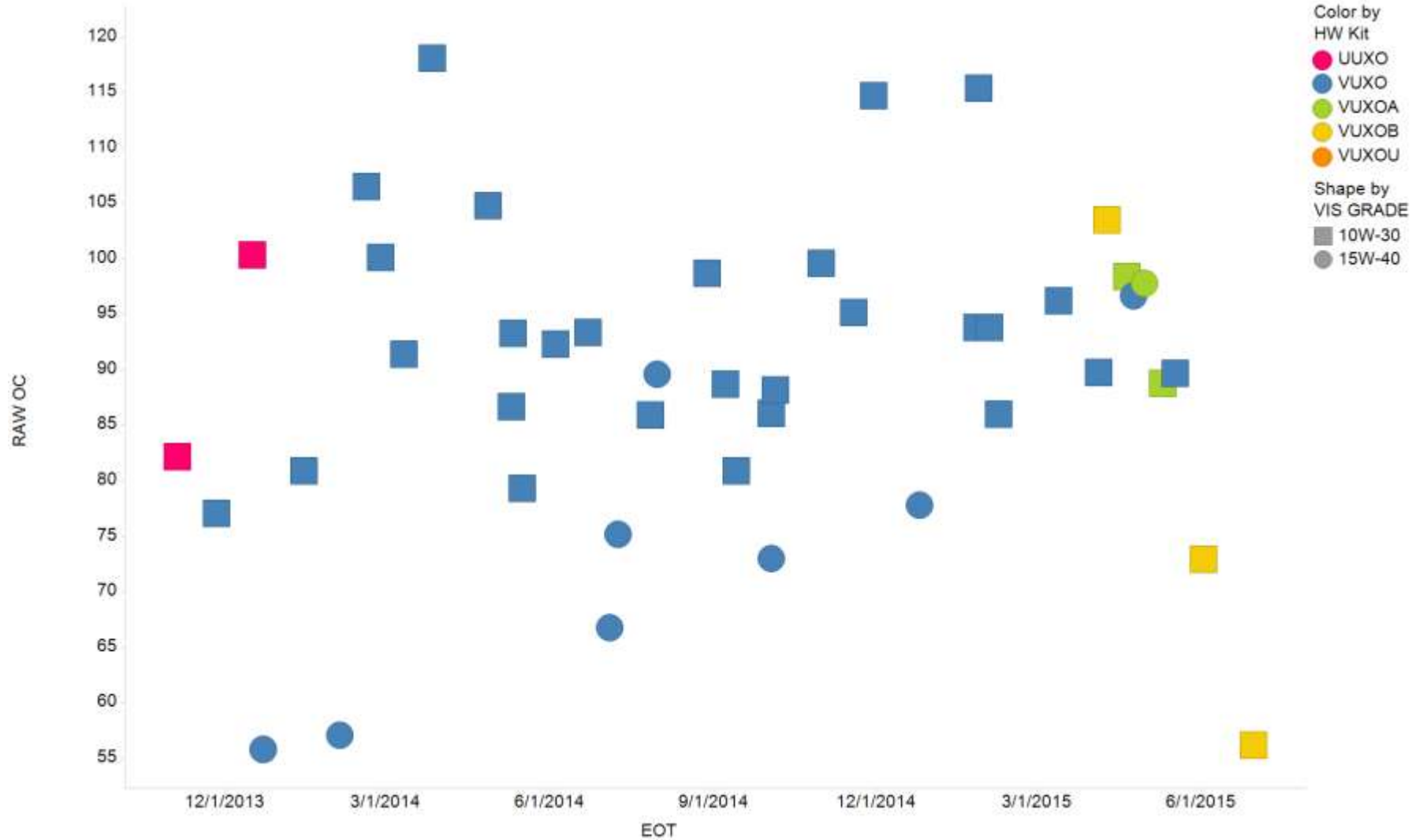
Filter Settings

- cfbatch: (AB, VUXO, VVXO)
- CHART: (Y, Y)
- IND: (821, 821-1, 821-2, 821-3, 821-4)



Candidate Data

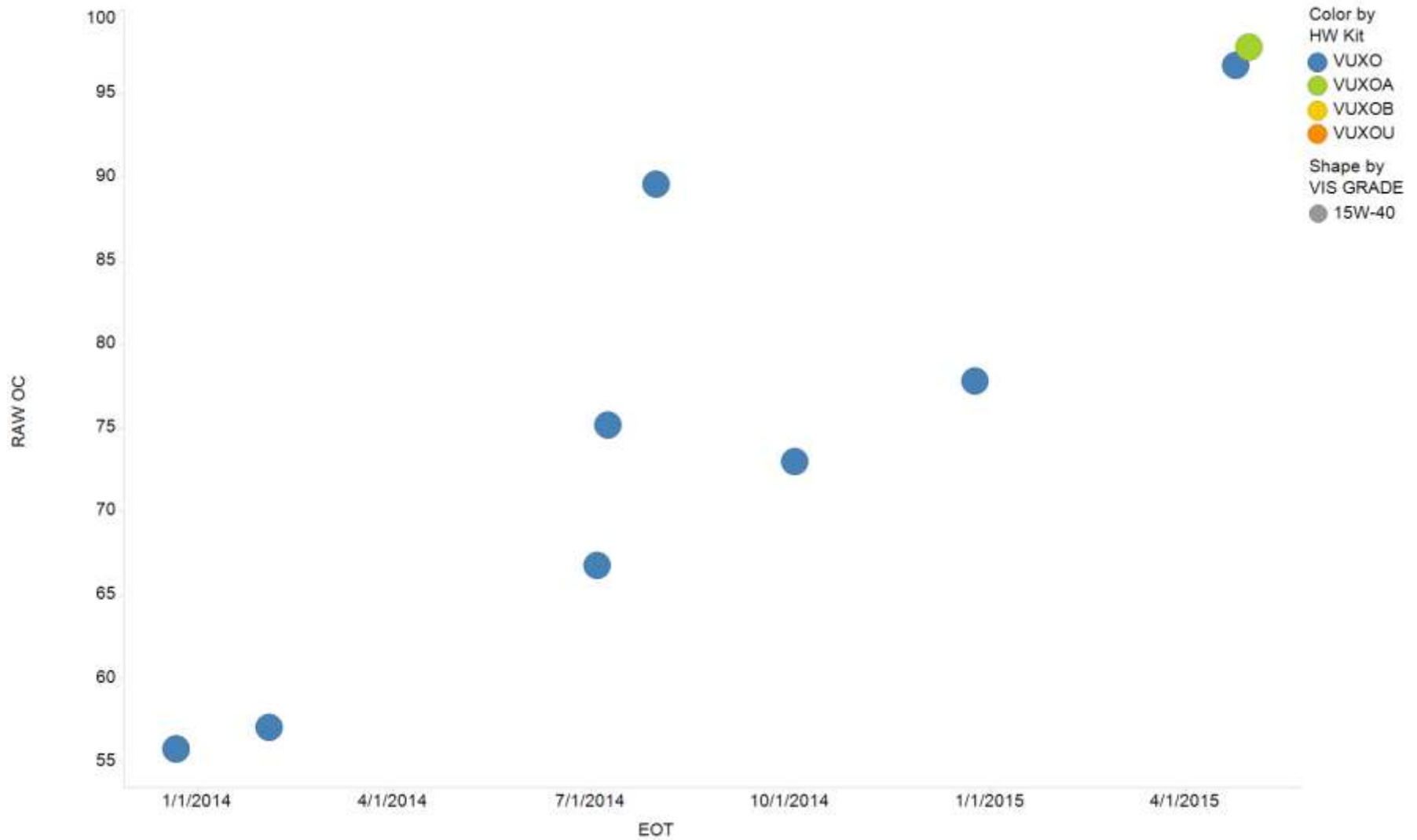
RAW OC vs. EOT





Candidate Data

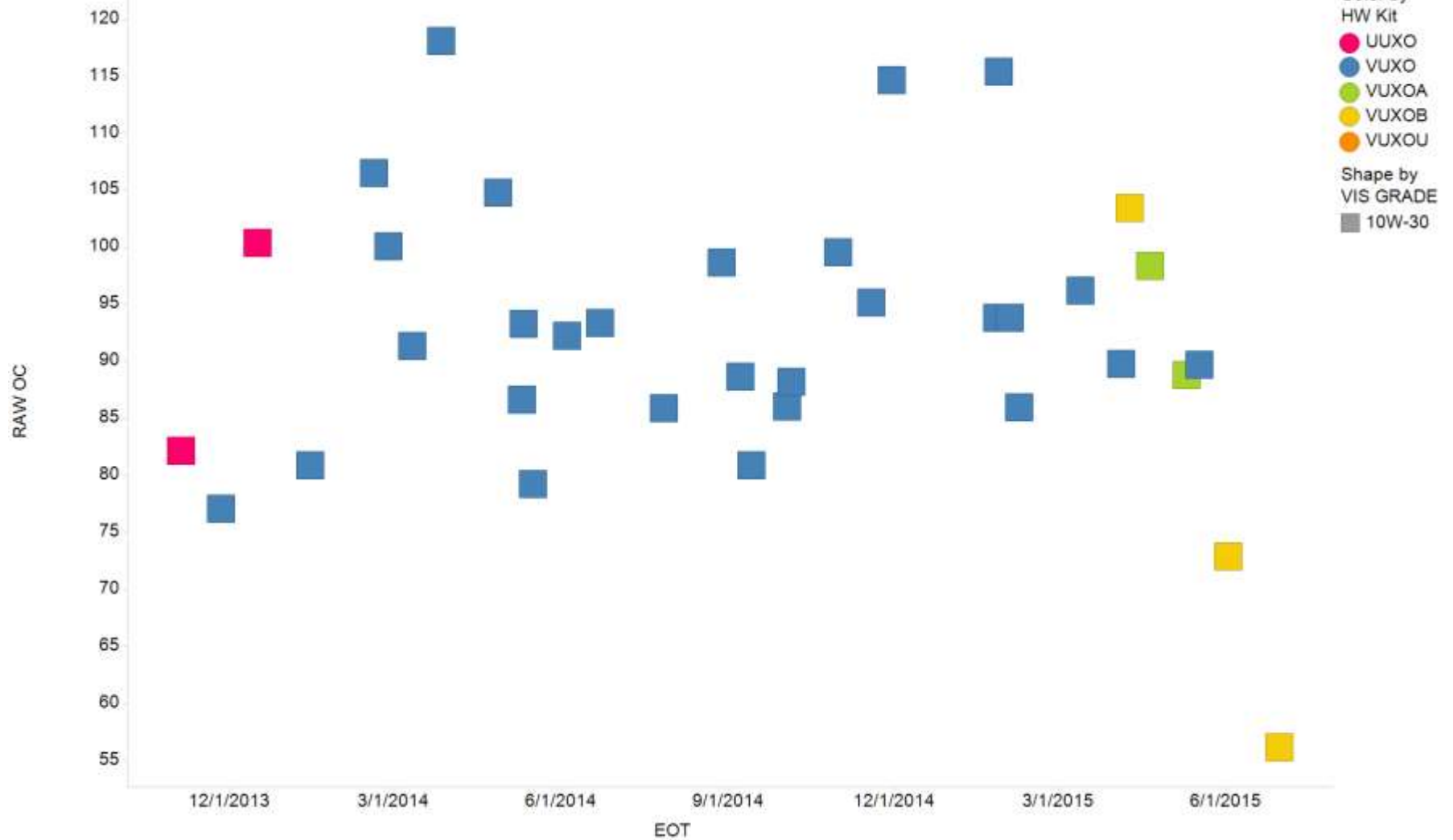
RAW OC vs. EOT





Candidate Data

RAW OC vs. EOT





Industry Correction Factors?

Current: Calculated 08/26/2014					
with goofy tests (98459 & 98867) deleted and TK 102361 added					
	TRNDPB	TRNDPB2	TRNOC	ALW_	ATRWL_
Predicted	3.819	2.994	4.482	19.8	86
Target	3.106	2.125	4.093	16.2	62
ICF	0.813	0.710	0.913	0.818	0.719
VUXO Update					
including all VUXO data except A and B pistons					
	TRNDPB	TRNDPB2	TRNOC	ALW_	ATRWL_
Predicted	3.746	2.904	4.497	21.8	73
Target	3.106	2.125	4.093	16.2	62
ICF	0.829	0.732	0.910	0.743	0.849
A and B Pistons					
including only A and B pistons					
	TRNDPB	TRNDPB2	TRNOC	ALW_	ATRWL_
Predicted	3.255	2.375	4.347	17.0	68
Target	3.106	2.125	4.093	16.2	62
ICF	0.954	0.895	0.942	0.953	0.912