

---

# T11: Analysis of reference oil 822

Elisa Santos

Infineum Confidential Information

Performance you can rely on.

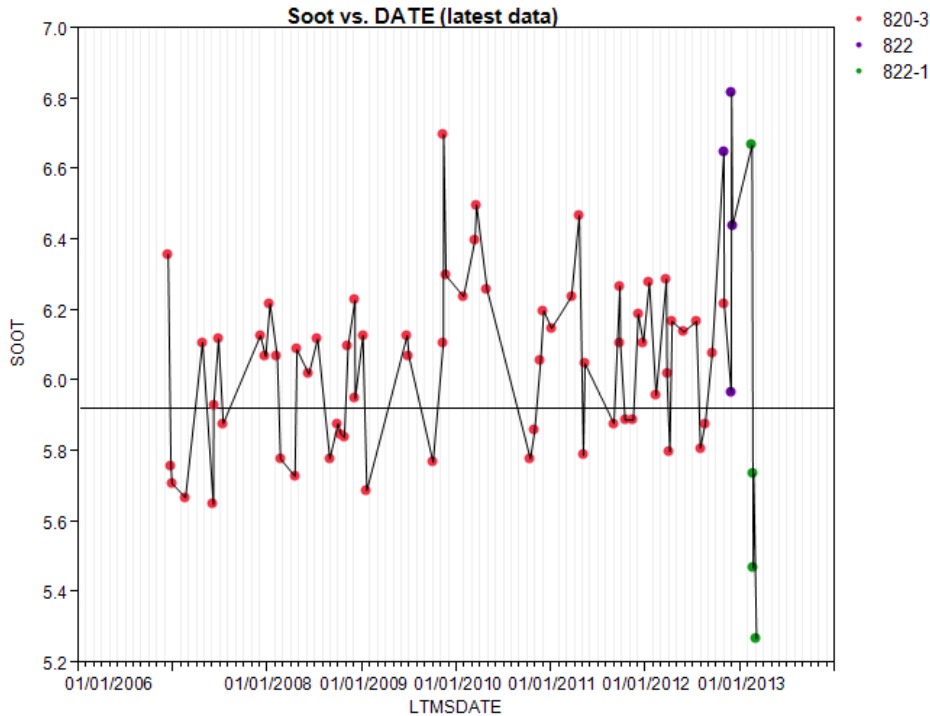


- Before and After SA
  - Soot
  - TGA
  - V100

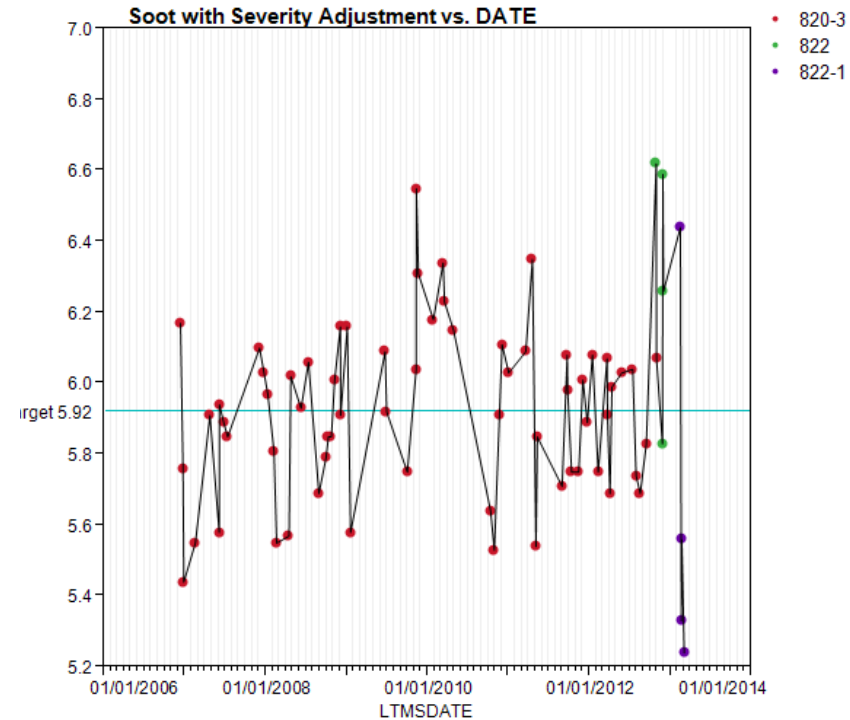
# Soot Before and After SA (showing 820-3 forward)



Before



After



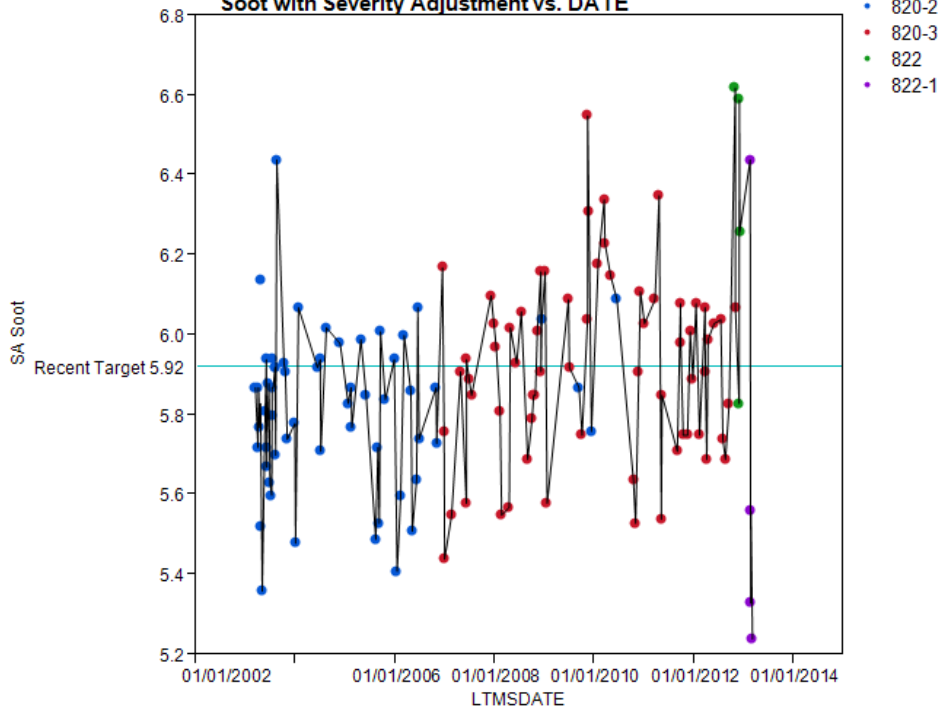
SA seems to be working properly  
Variability seems to have changed for 822

# Soot With Severity Adjustment: all data



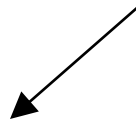
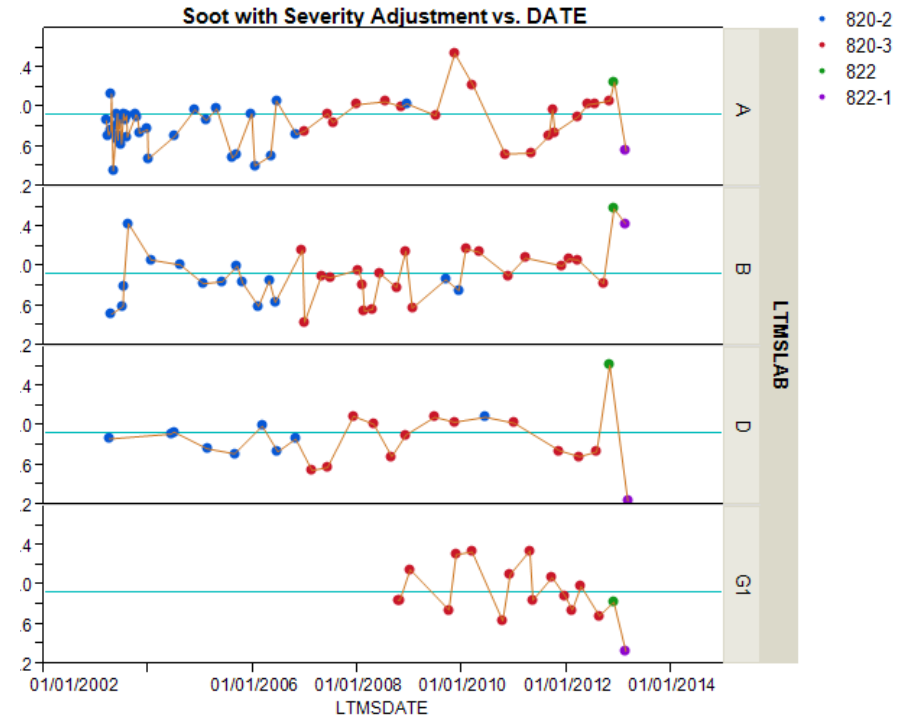
## Over Time

### Soot with Severity Adjustment vs. DATE



## Over Time and By Lab

### Soot with Severity Adjustment vs. DATE

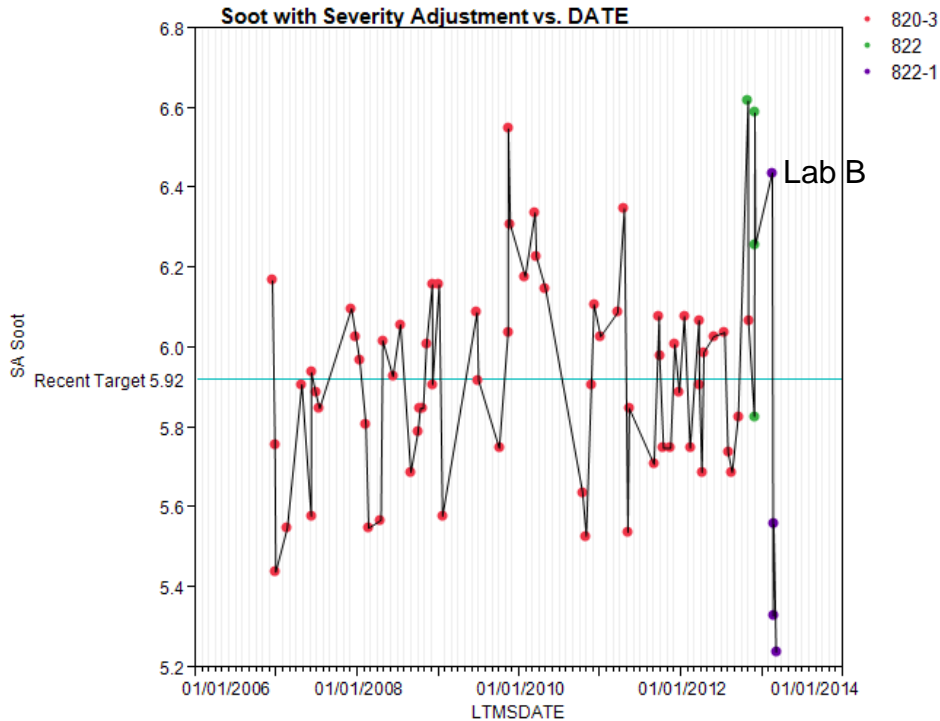


Increased variability?  
Changed level?

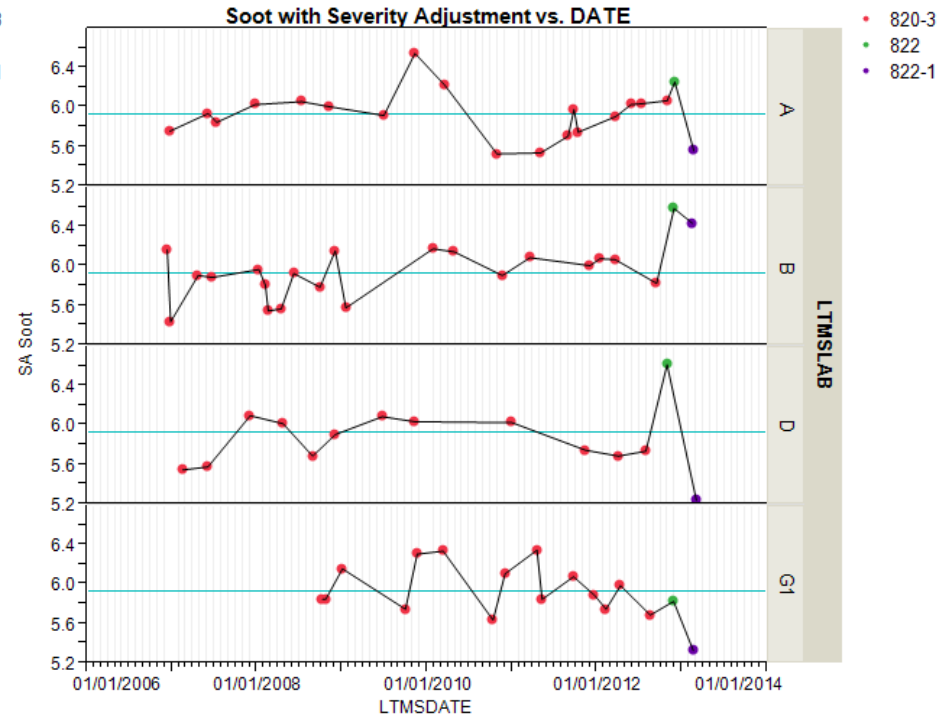
# Soot With Severity Adjustment: showing 820-3 forward



## Over Time



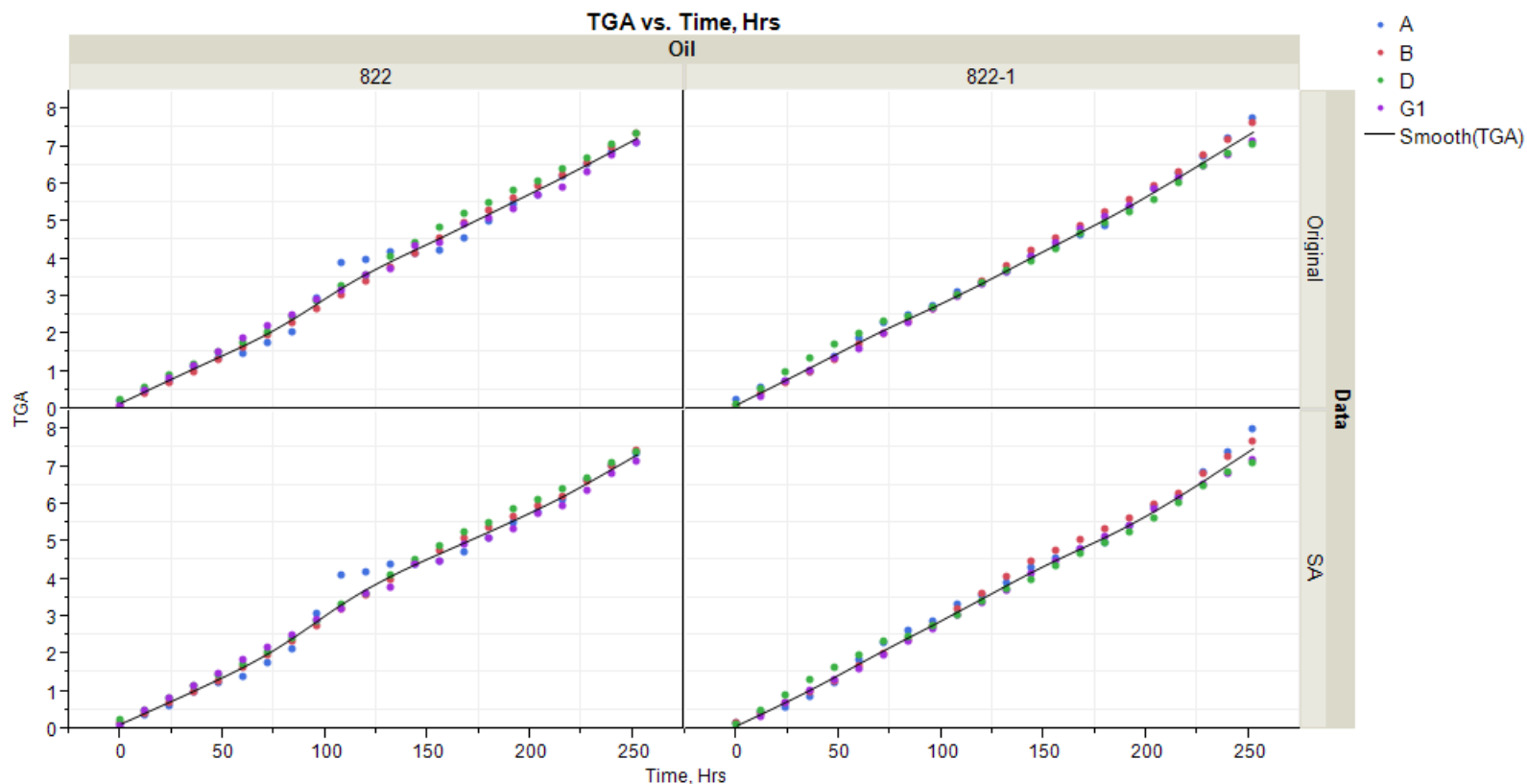
## Over Time and By Lab



Variability seems to have changed for 822

822-1 data: Labs A, G1 and D seem to be different from Lab B

# TGA Before and After Severity Adjustment for 822 and 822-1

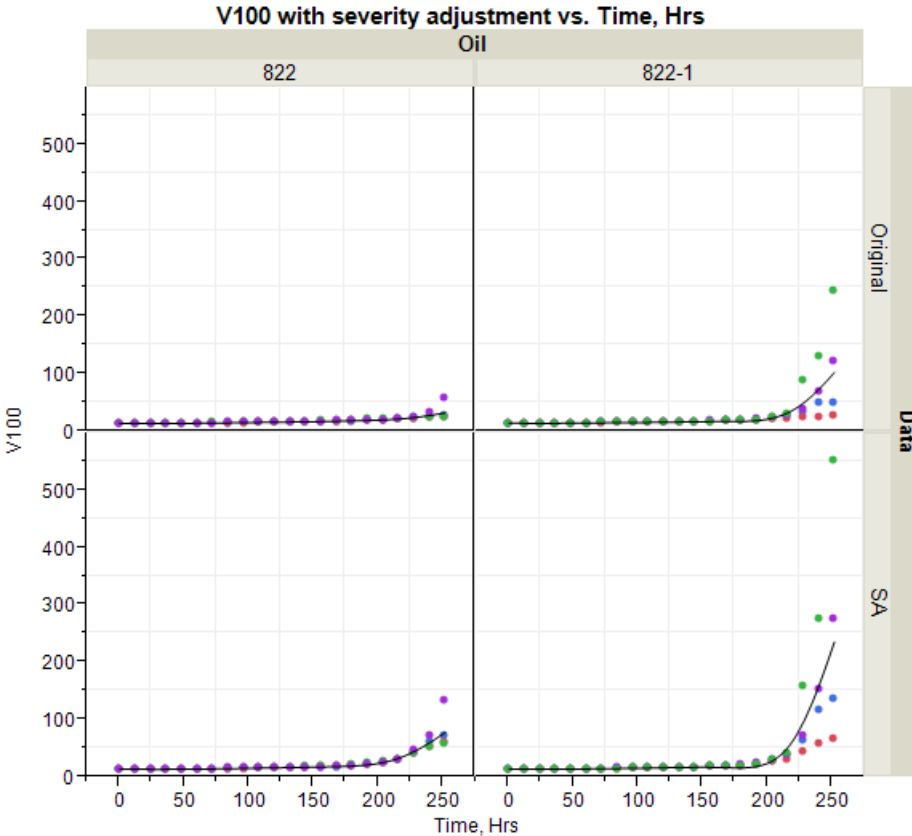


Variability seems to have increased at EOT

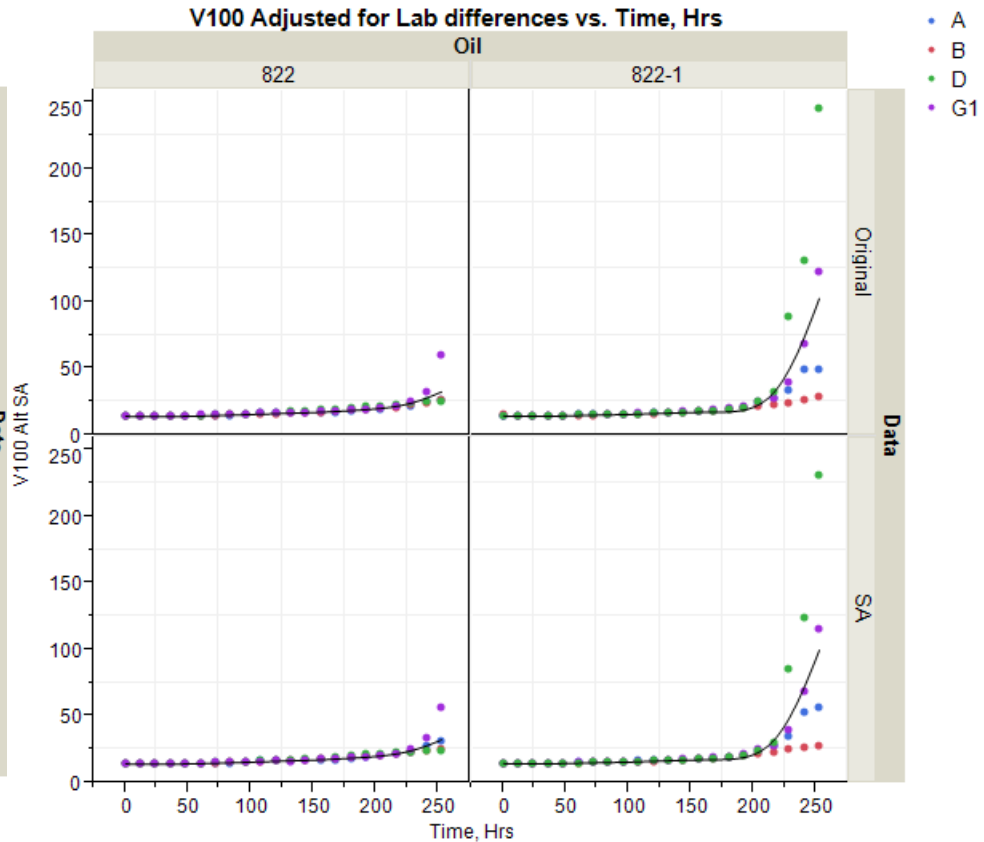
# Viscosity 100 C



With SA: Corrected back to original  
Targets (conventional SA)



With Adjustment: Removing Lab Effect



V100 for 822-1 is higher than V100 for 822  
V100 for 822-1 is also more variable than V100 for 822

Permission is given for storage of one copy in electronic means for reference purposes. Further reproduction of any material is prohibited without prior written consent of Infineum International Limited

© Copyright INFINEUM INTERNATIONAL LIMITED 2013.  
All rights reserved

See the legal disclaimer notice on [www.infineum.com](http://www.infineum.com)

"INFINEUM", "DOBANAX", "PARATAC", "SYNACTO", "VEKTRON", "VISTONE" and the corporate mark comprising the interlocking ripple device are trademarks of Infineum International Ltd.