

HDEOCP

16th October 2001

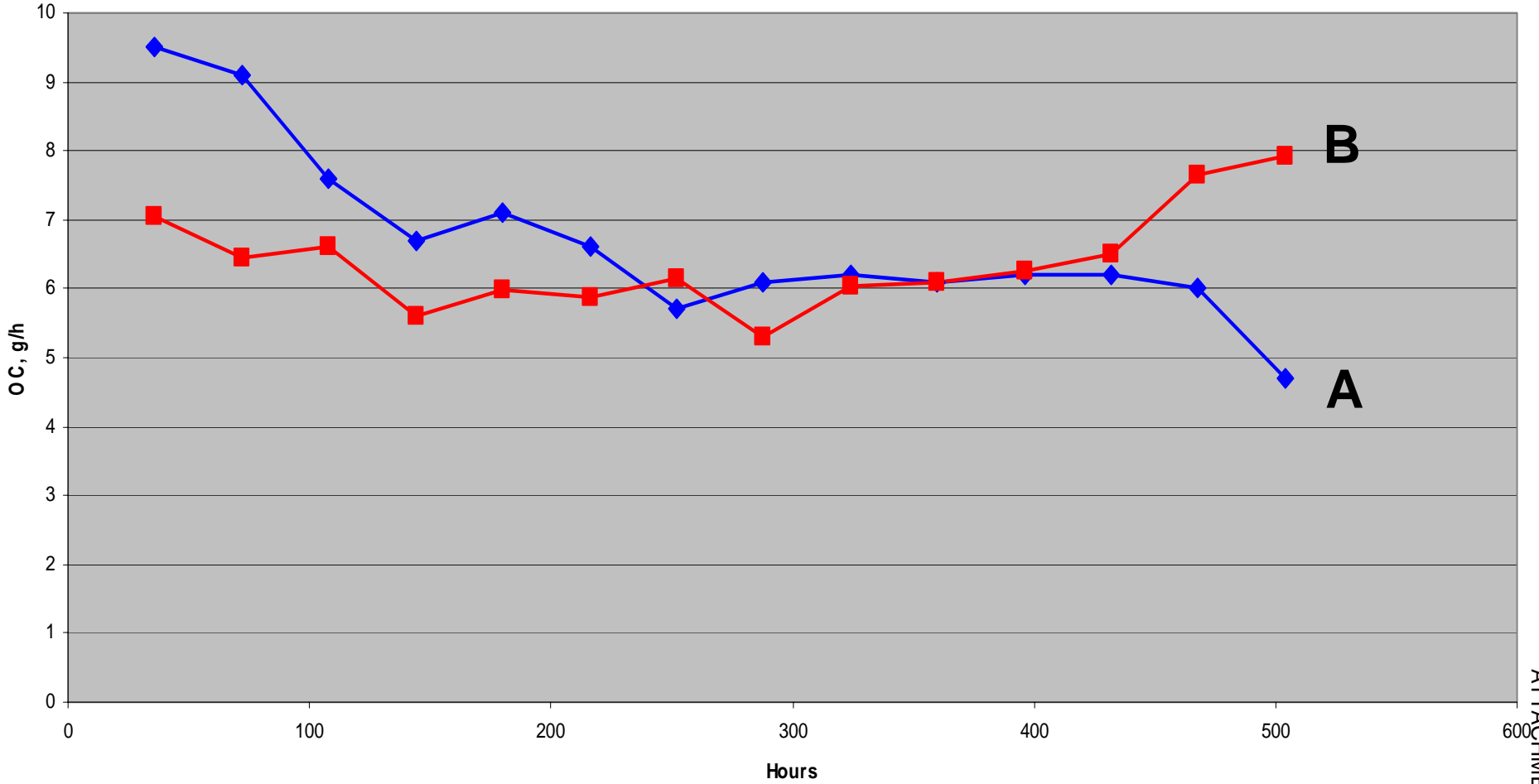
Caterpillar 1R Limit Proposal

Caterpillar 1R Oil Consumption

Note: Same Oil Run Twice!

1R	Test A	Test B
WDR	282.4	340
TGC	20.25	26.5
TLC	13.75	20.25
IOC	6.7	6.2
FOC	5.4	7.8
Delta OC	-1.3	1.6
Ratio FOC/IOC	0.806	1.249

Caterpillar 1R Oil Consumption



Caterpillar 1R Oil Consumption

- Current oil consumption “delta” proposal results in ratios that fall within the variability of the test
 - Least mean square mean of matrix data = 1.09
 - Root mean square error = 0.1567
- This will cause oils with good volatility to fail
- Lubrizol offers the proposal that:-

Oil Consumption limit at 2 sigma of the matrix data,
EOT/IOC ratio = 1.4