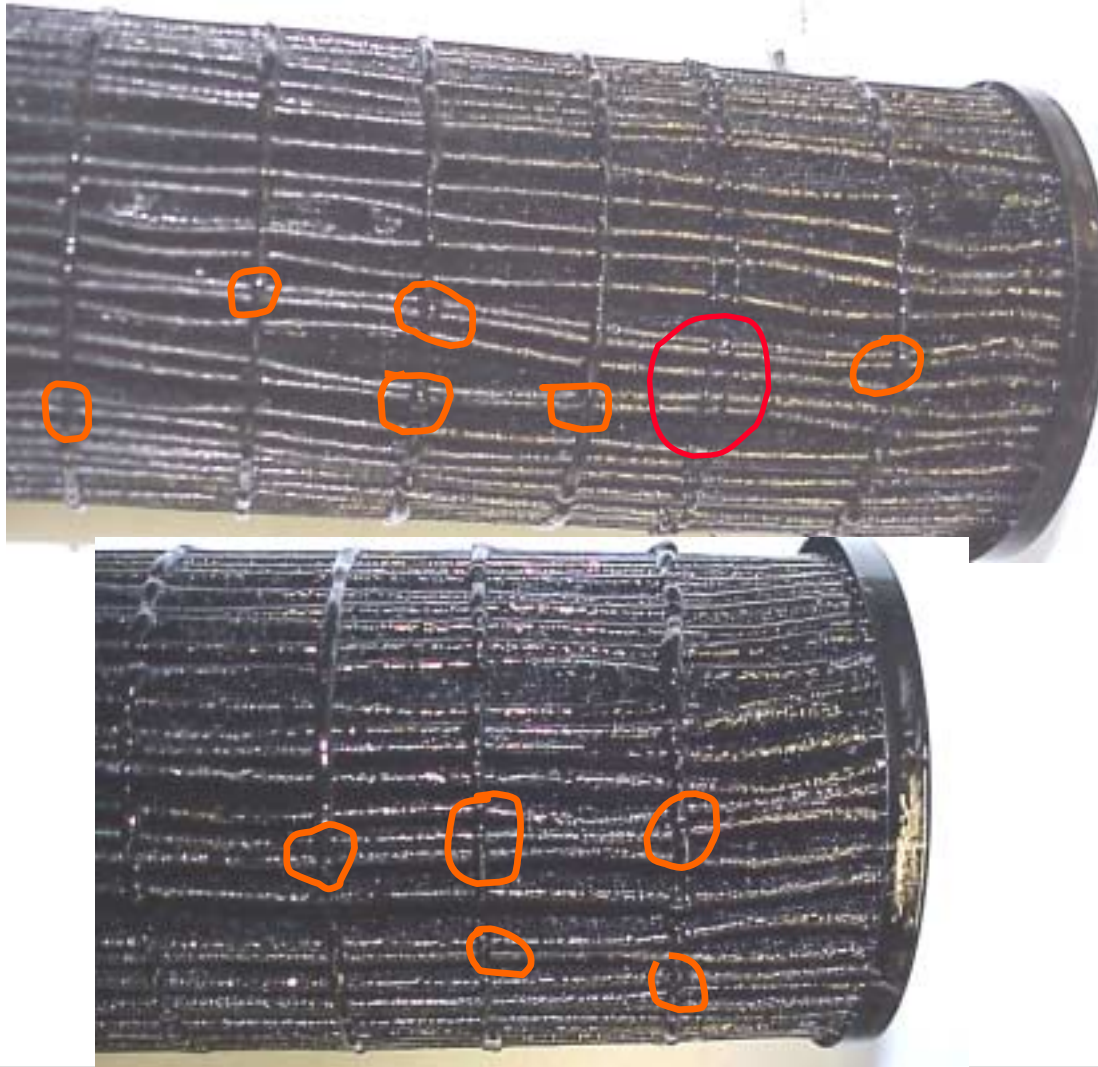


Cummins M11 Filter Plugging

- **Oronite has observed variable filter performance in recent testing**
- **Filters have been examined to determine cause**
- **We observe that filters with high pressure have had the pleats glued together**

M11EGR Filters



ASTM Committee Use Only
Use for any other purpose prohibited

Recommendations

- **Improve filter pleat spacing consistency**