



Test Monitoring Center

6555 Penn Avenue
Pittsburgh, PA 15206-4489
(412) 365-1000

MEMORANDUM: 05-043
DATE: June 8, 2005
TO: Warren Totten, Chairman, Cummins Surveillance Panel
FROM: Jeff Clark
SUBJECT: M11EGR Calibration Testing for the April 2005 ASTM Report Period

The following is a summary of M11EGR reference oil tests completed during the April 2005 ASTM report period, which began on October 1, 2004 and ended on March 31, 2005.

Test Status	TMC Validity Code	Number of Tests
Acceptable Calibration Test	AC	1
Failed Calibration Test (LTMS Criteria)	OC	0
Operationally Invalid Calibration Test	LC	0
Aborted Calibration Test	XC	0
Total		1

Severity and Precision:

Figures 1, 2, and 3 (attached) show the current industry EWMA severity, EWMA precision, and cusum charts for Crosshead Weight Loss (CWL), Filter Plugging Delta P (FPD), and Average Sludge Rating (ASR). Low-test activity makes it difficult to offer any meaningful commentary regarding severity trends.

Due to extremely low activity, precision will not be presented.

Reference Oils:

The current reference oil test targets are shown below:

Oils	N	Parameter	Mean (cSt)	S
830-2	10	CWL	12.2	3.2
		ASR	8.40	0.36
		FPD	11.9121	1.0554

Once 20 tests have been completed on oil 830-2, the TMC will provide a target update for surveillance panel consideration. To date, 19 tests have been completed on oil 830-2.

Information Letters:

No M11EGR information letters were issued this ASTM period.

TMC Laboratory Visits:

No TMC laboratory visits were conducted this ASTM period.

Additional Information:

The M11EGR database, timeline, and alarm logs can be accessed on the TMC's homepage. If you have any questions on how to access this information, contact the TMC.

JAC/jac/mem05-043.jac.doc

Attachments

c: J.L. Zalar, TMC

F.M. Farber, TMC

Cummins Surveillance Panel

<ftp://ftp.astmtmc.cmu.edu/docs/diesel/cummins/semiannualreports/M11EGR-04-2005.pdf>

Distribution: Email

FIGURE 1
M1IEGR INDUSTRY OPERATIONALLY VALID DATA

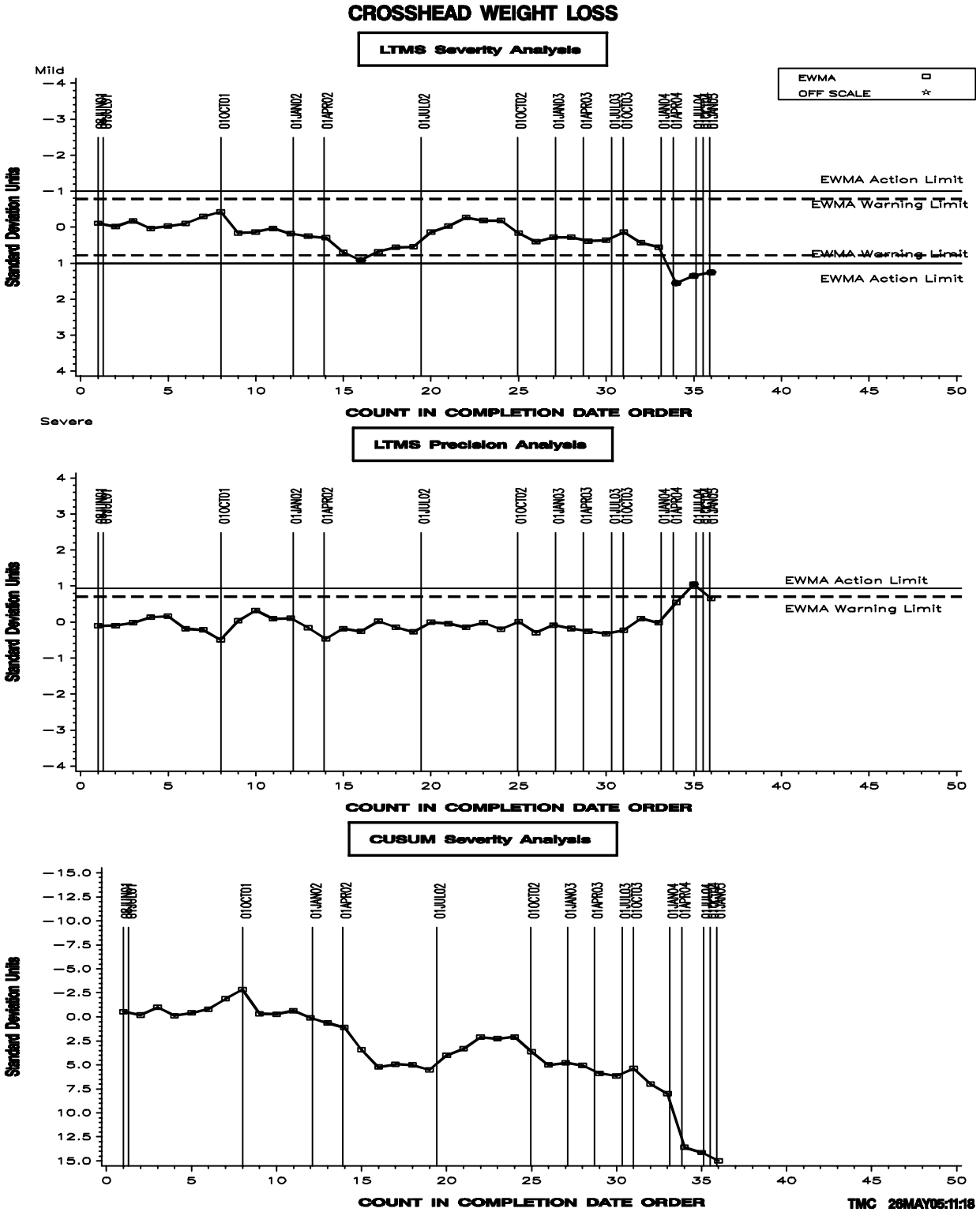


FIGURE 2
M1IEGR INDUSTRY OPERATIONALLY VALID DATA

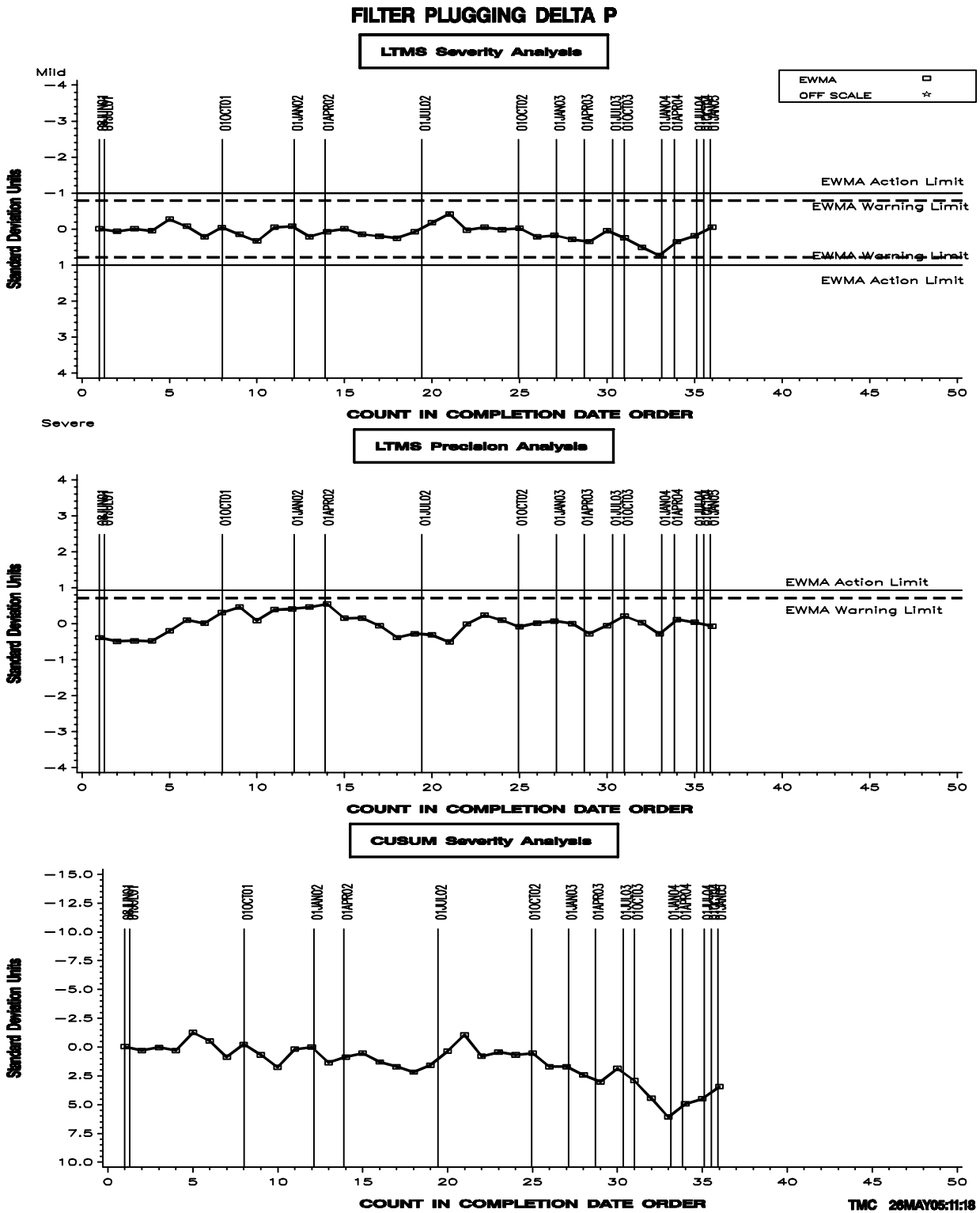


FIGURE 3
M11EGR INDUSTRY OPERATIONALLY VALID DATA

