



Test Monitoring Center

@ Carnegie Mellon University
6555 Penn Avenue, Pittsburgh, PA 15206, USA

<http://astmtmc.cmu.edu>
412-365-1000

1R Information Letter No. 18-1
Sequence No. 9
April 30, 2018

ASTM consensus has not yet been obtained on this information letter. An appropriate ASTM ballot will be issued in order to achieve such consensus.

TO: Caterpillar Mailing List
SUBJECT: Changes to 1R Humidity Probe Location

During the March 7th CAT Surveillance Panel meeting it was decided to update the location of the humidity probe installation. The humidity probe location has been changed to match the probe location of the 1P test. Figure A4.1 has been revised and new Figures A4.2 and A4.3 have been added to D6923. All three figures are attached. This change is effective March 7, 2018.

Hind Abi-Akar

Hind Abi-Akar
Project Engineer
Caterpillar, Inc.

Frank M. Farber
Director
ASTM Test Monitoring Center

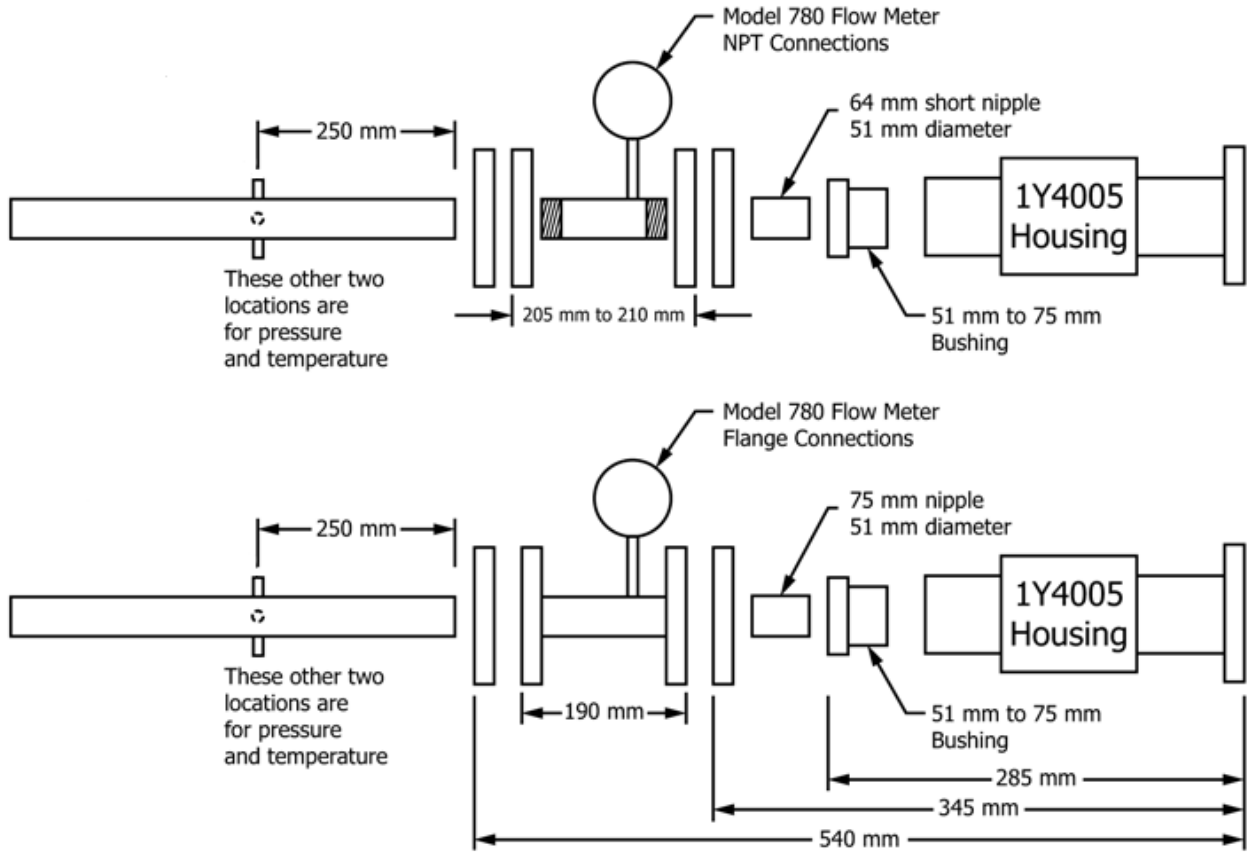
Attachment

c: http://www.astmtmc.cmu.edu/ftp/docs/diesel/scote/procedure_and_ils/1r/il18-01.pdf

Distribution: Email

(Revises Test Method D6923-17)

A4. INTAKE AIR MASS FLOW SENSOR AND HUMIDITY PROBE INSTALLATION



NOTE 1—Overall lengths between different configurations should be within 6.4 mm.

NOTE 2—The dimensions apply to assembled parts.

FIG. A4.1 Intake Air Sensor Installation

(Revises Test Method D6923-17)

Figs. A4.2 and A4.3 illustrate the humidity probe installation locations.

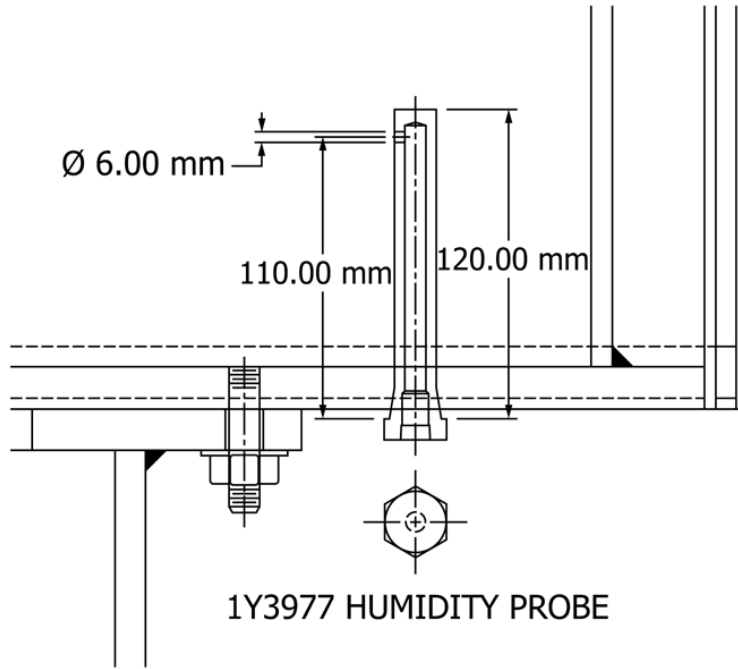


FIG. A4.2 Humidity Probe Installation Location

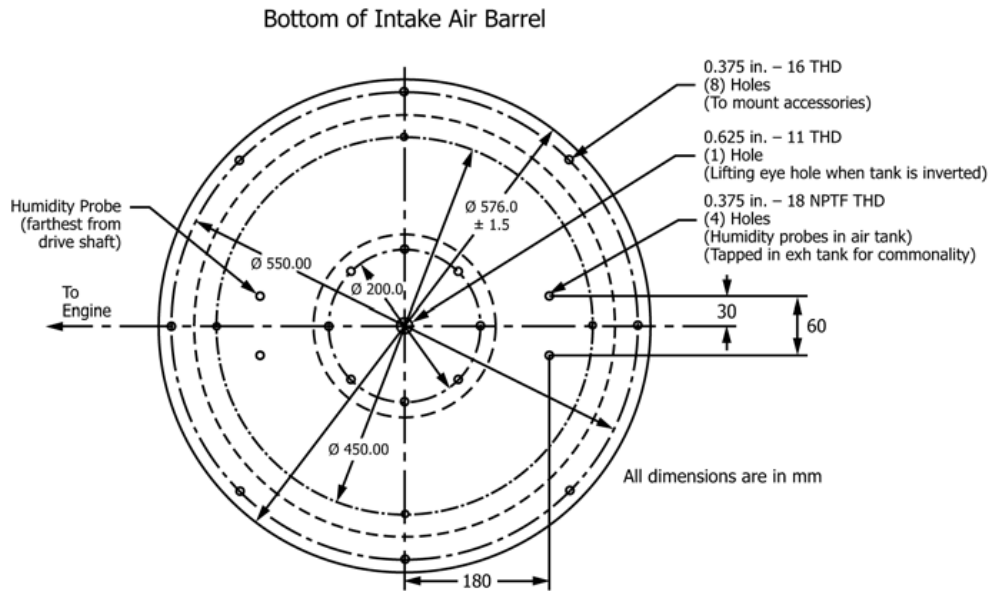


FIG. A4.3 Humidity Probe Installation Location—Barrel Bottom