

CAT Aeration Engine Test Operational data review

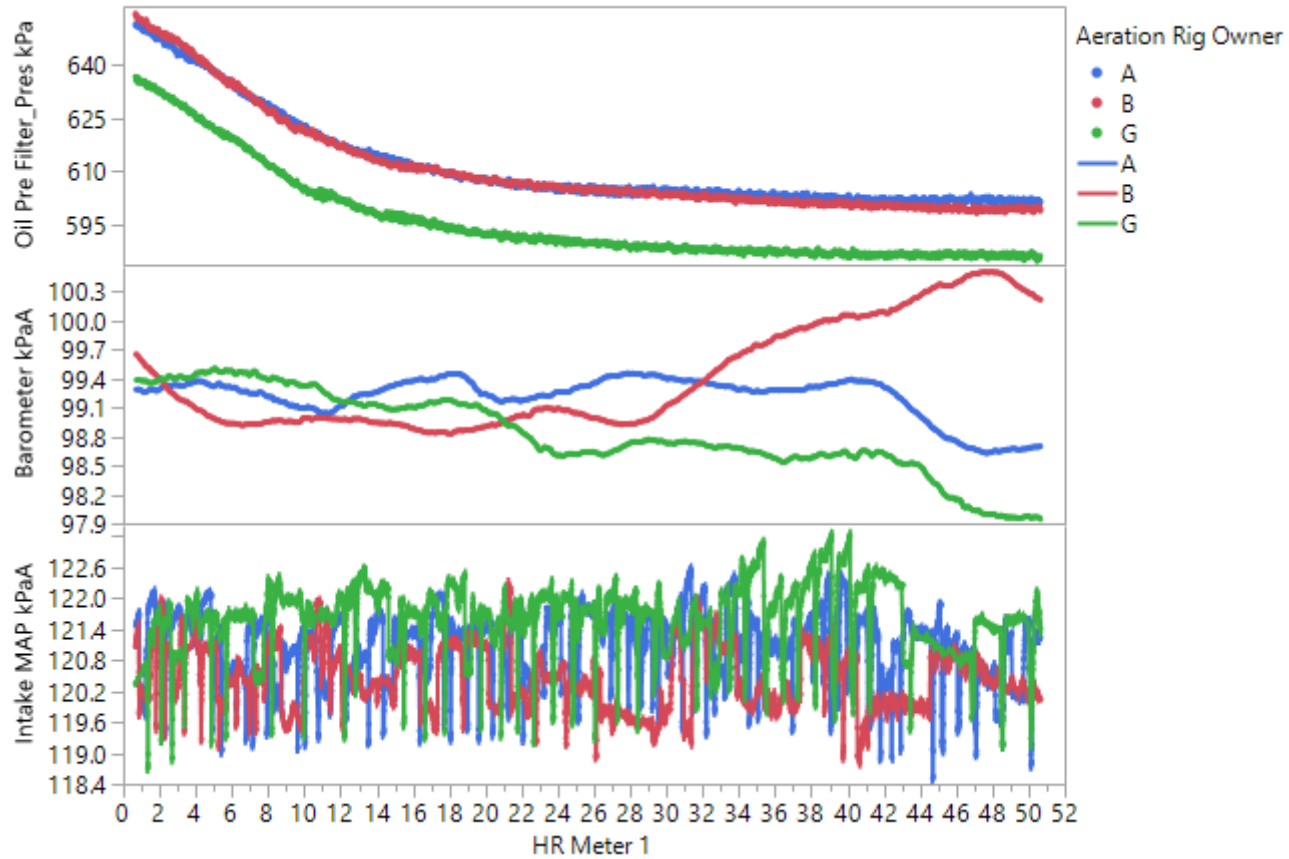
Lab G generated data for all three boxes: A, B and G

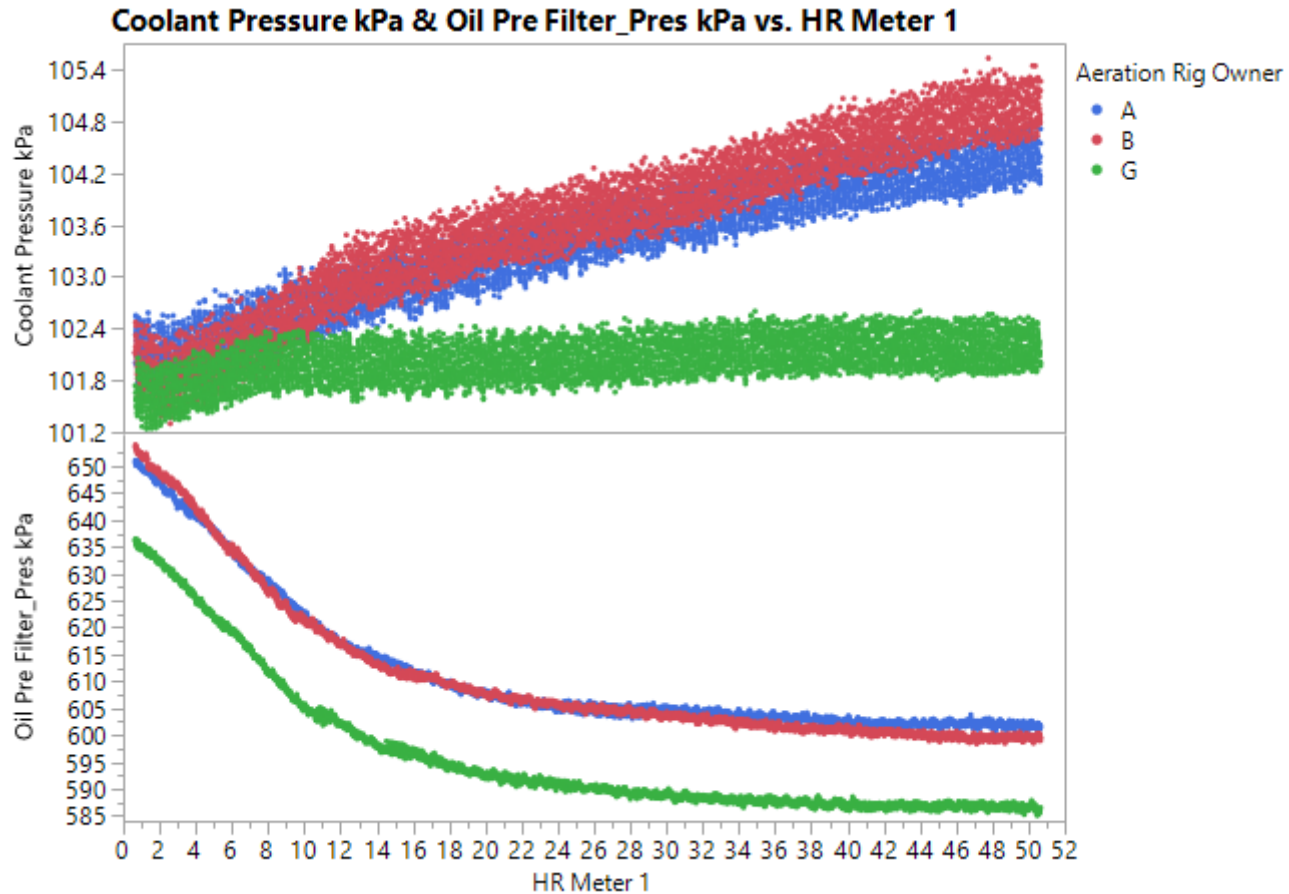
Elisa Santos and Jim Gutzwiller
Face to face in San Antonio
03/07/2018

Performance you can rely on.

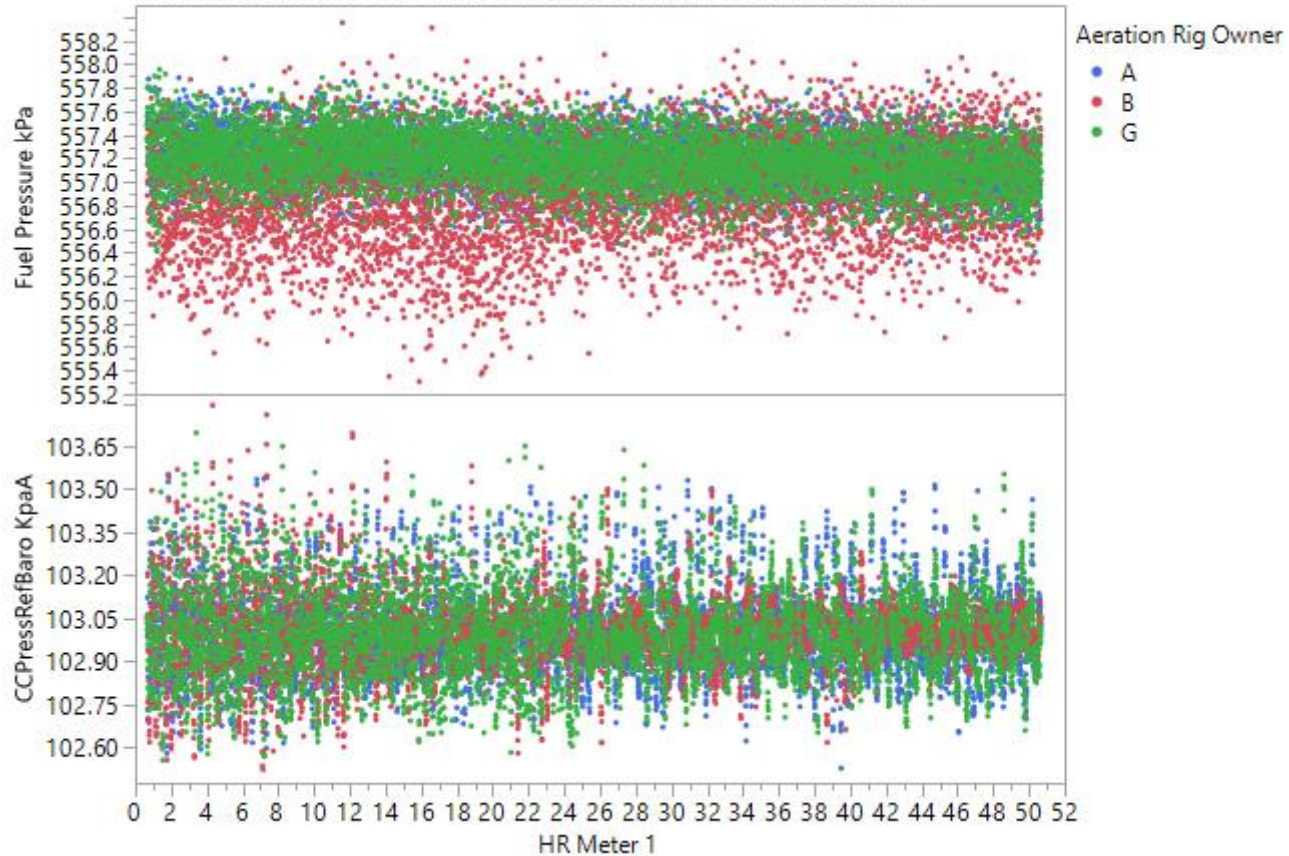


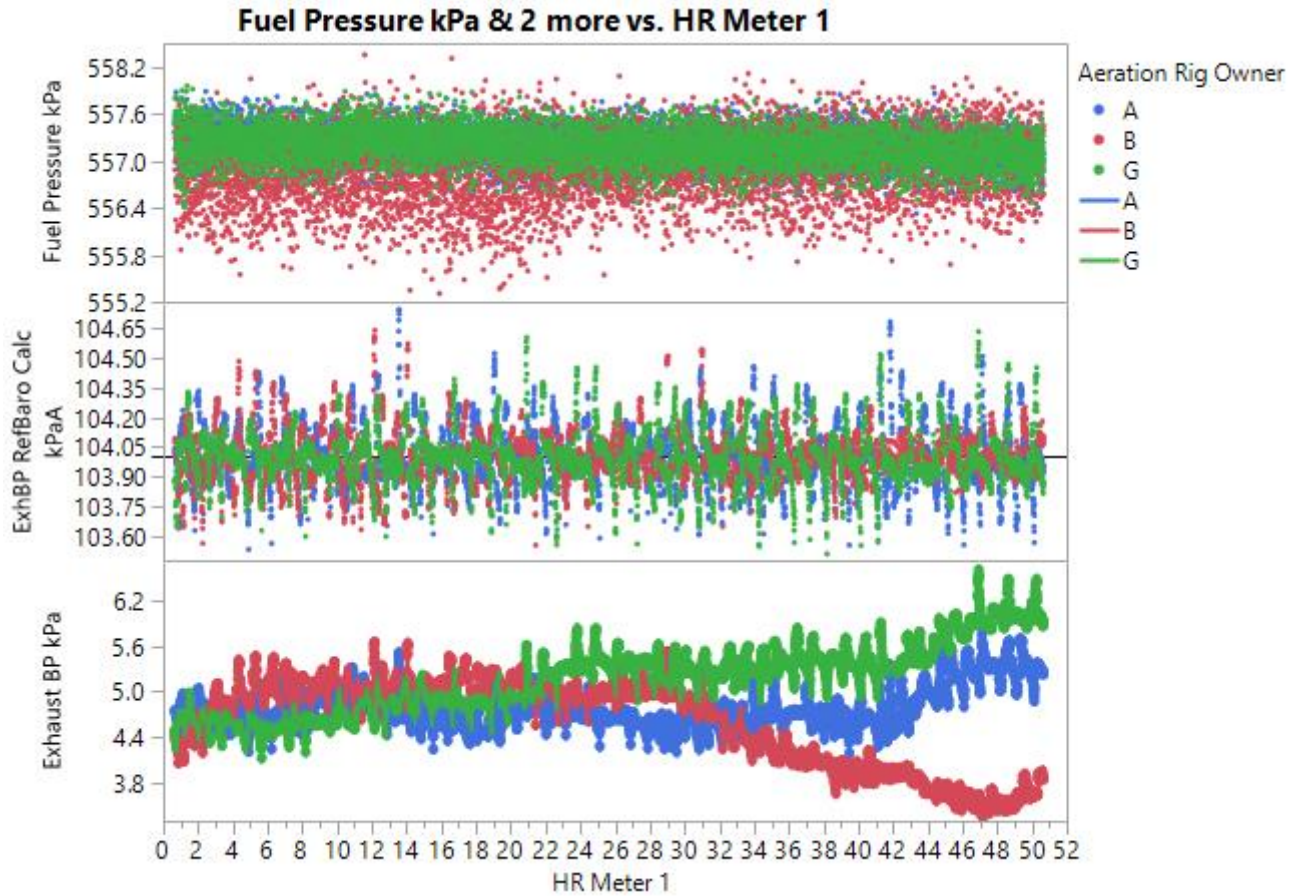
Oil Pre Filter_Pres kPa & 2 more vs. HR Meter 1



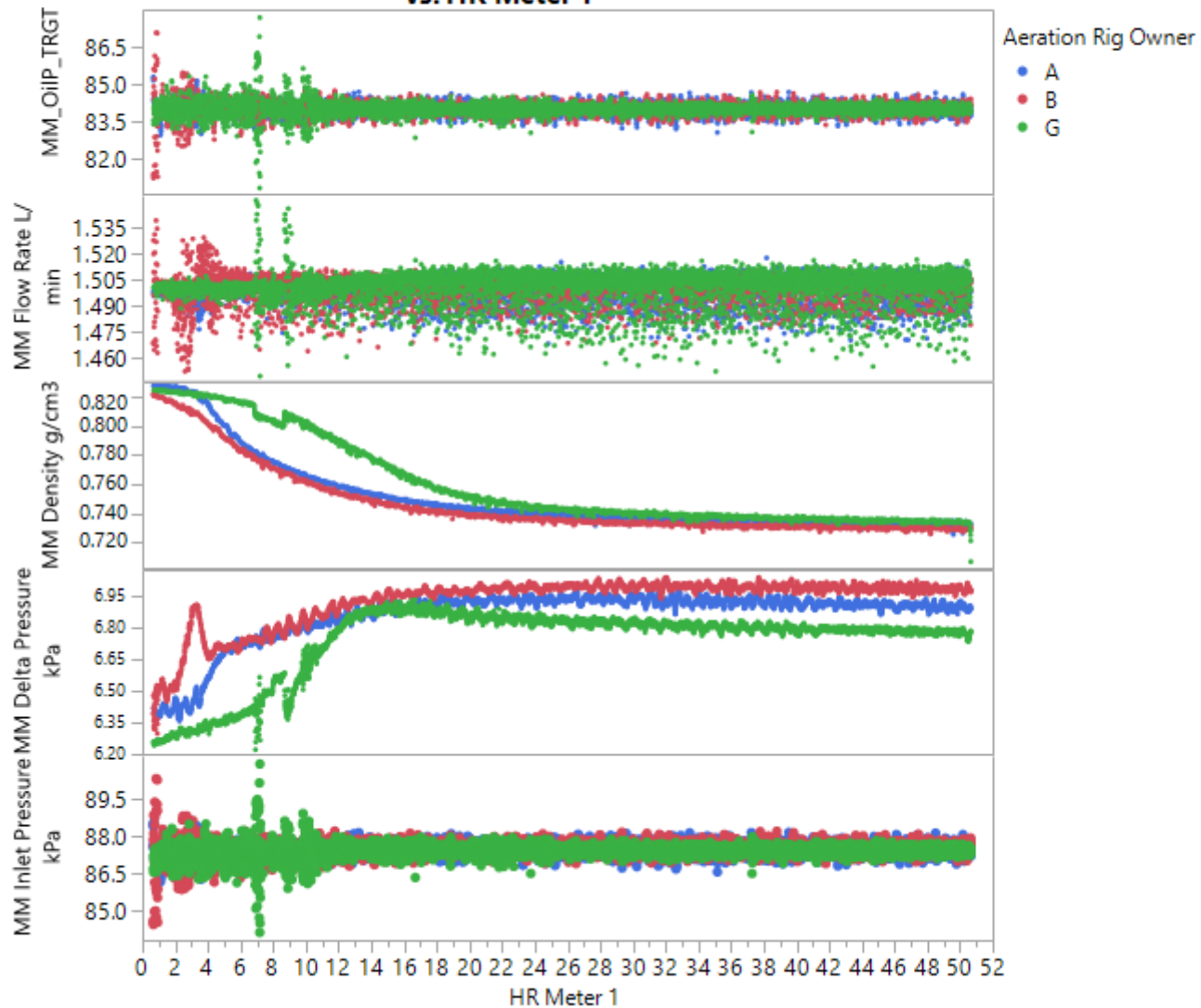


Fuel Pressure kPa & CCPressRefBaro KpaA vs. HR Meter 1

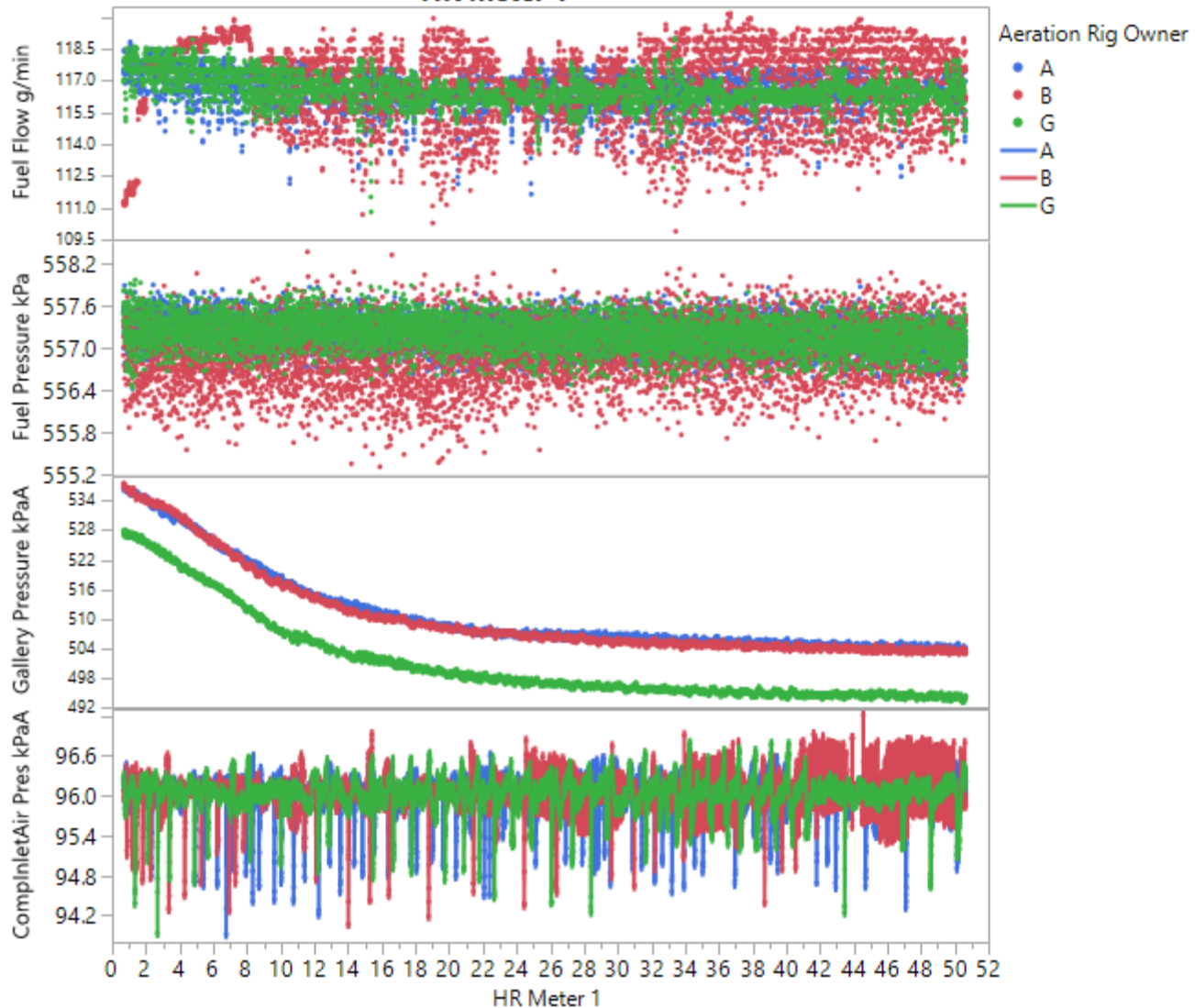




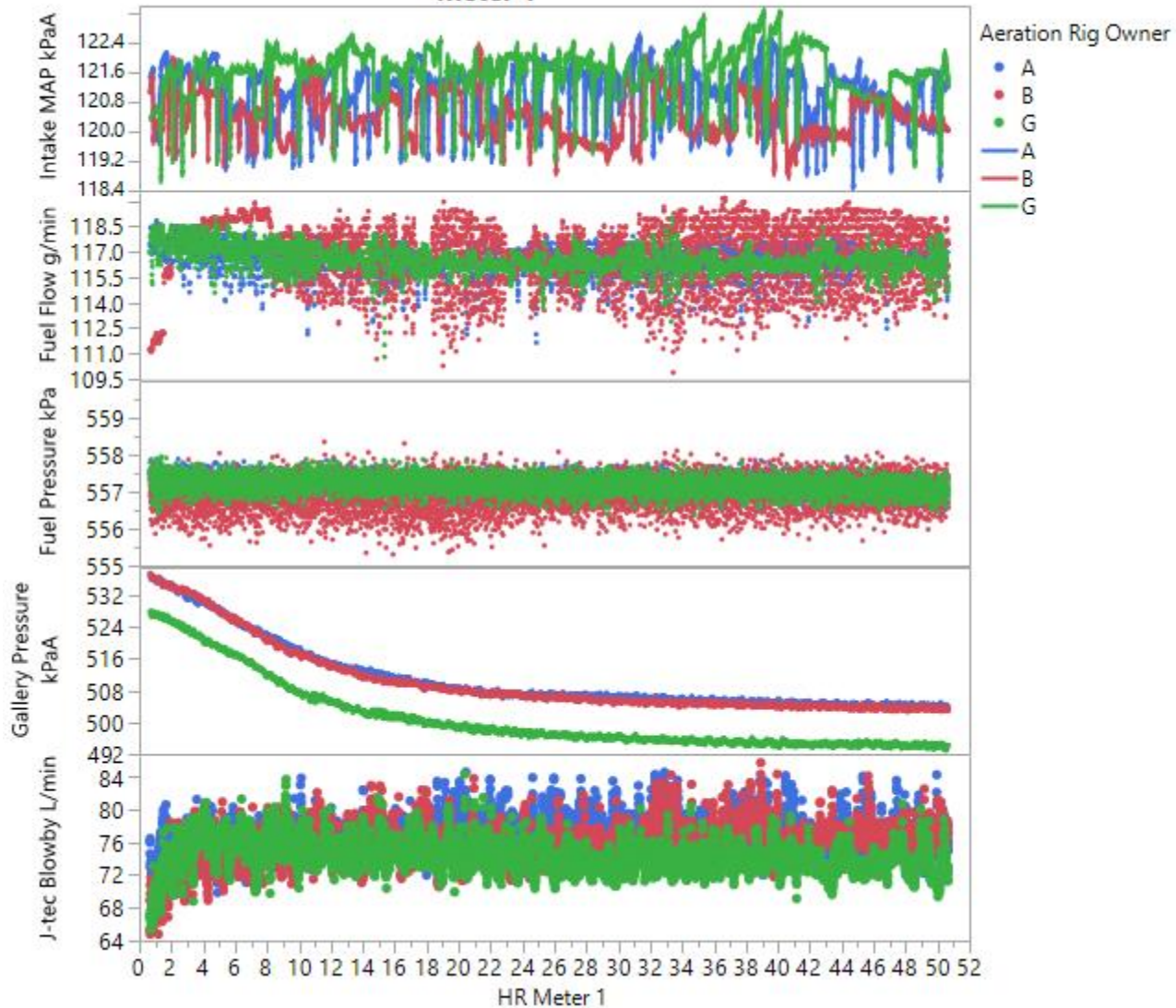
MM Inlet Pressure kPa & MM Delta Pressure & MM density & MM Flow rate vs. HR Meter 1



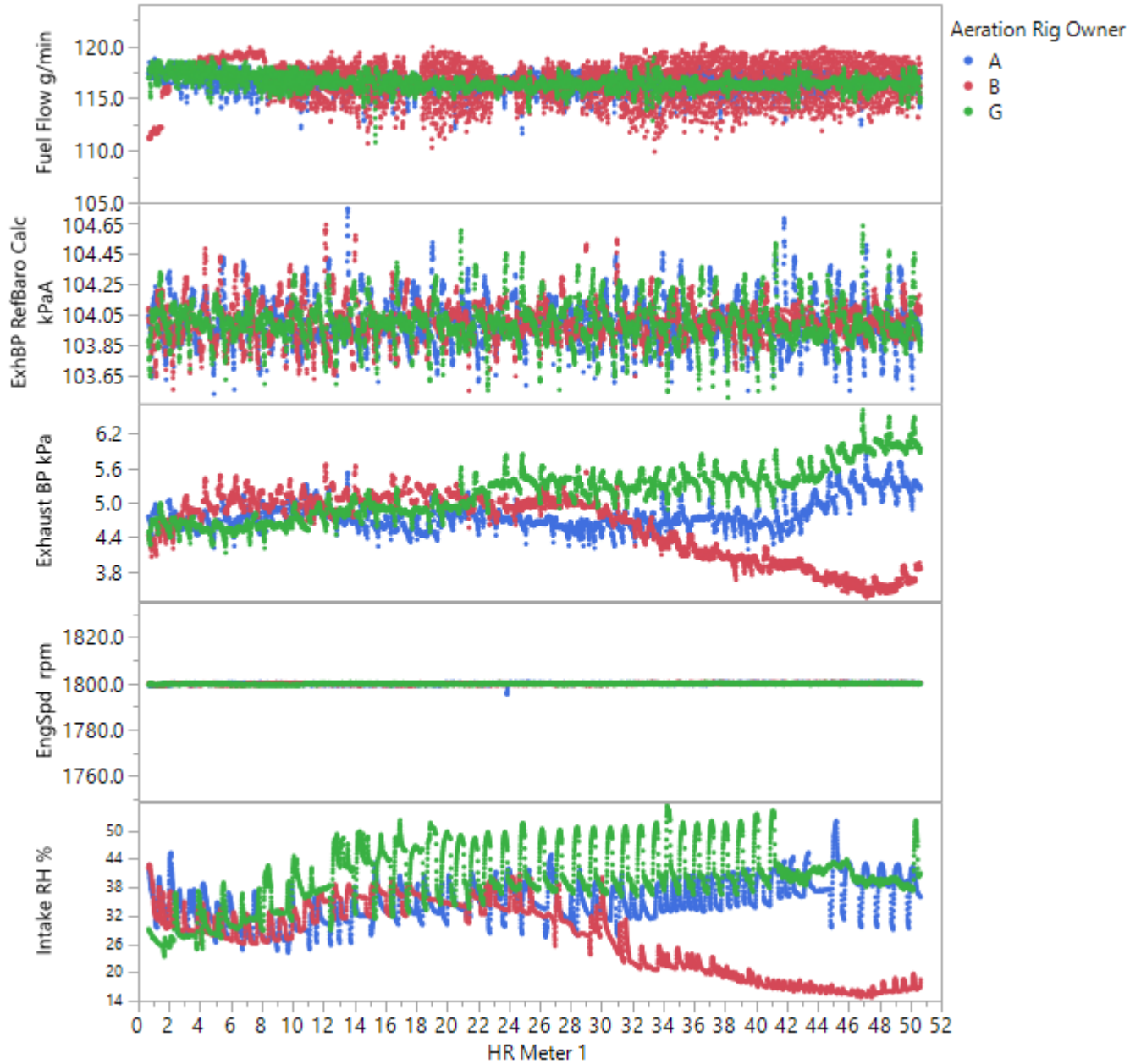
ComplnetAir Pres kPaA & Gallery Pressure & Fuel Pressure & Fuel Flow vs. HR Meter 1



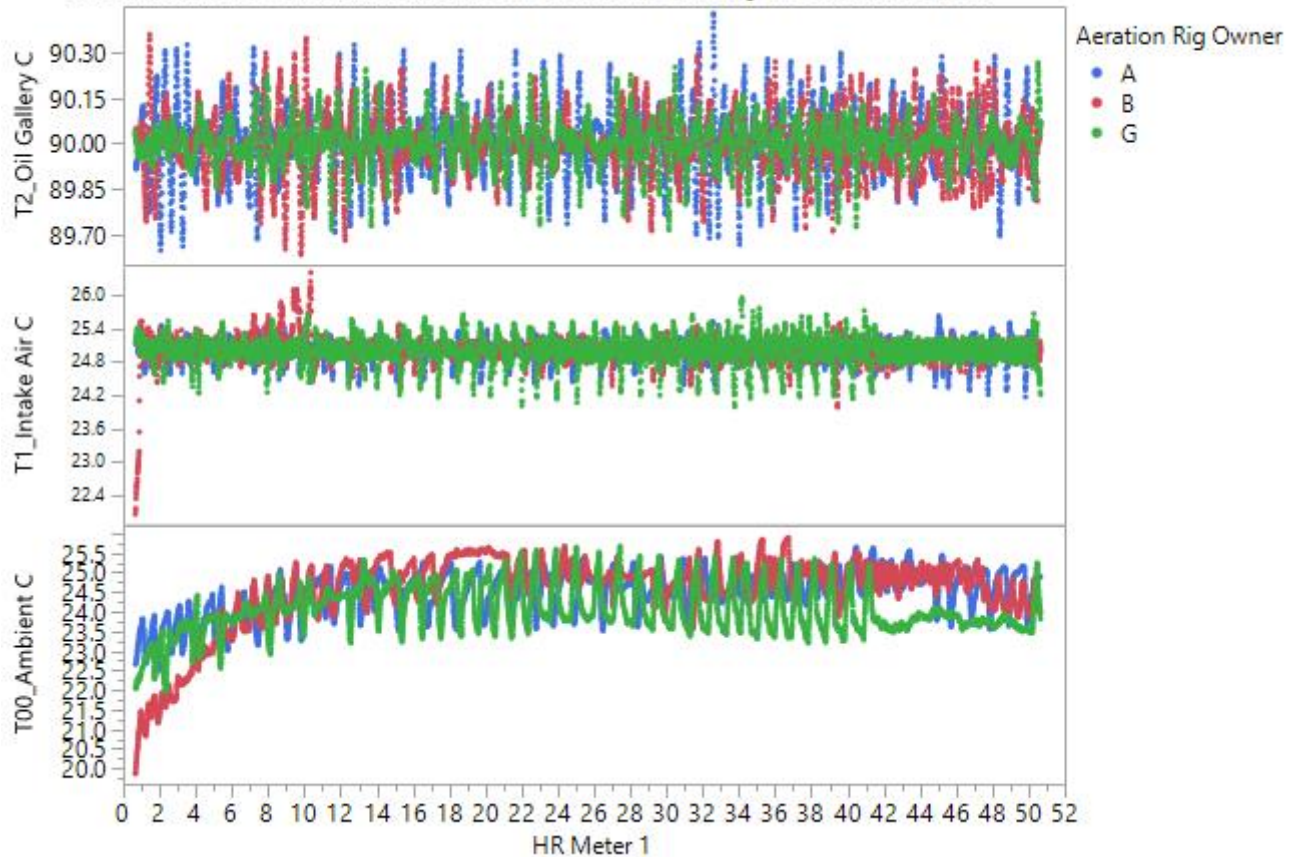
J-tec Blowby L/min & Gallery Pressure & Fuel Pressure & Fuel Flow vs. HR Meter 1



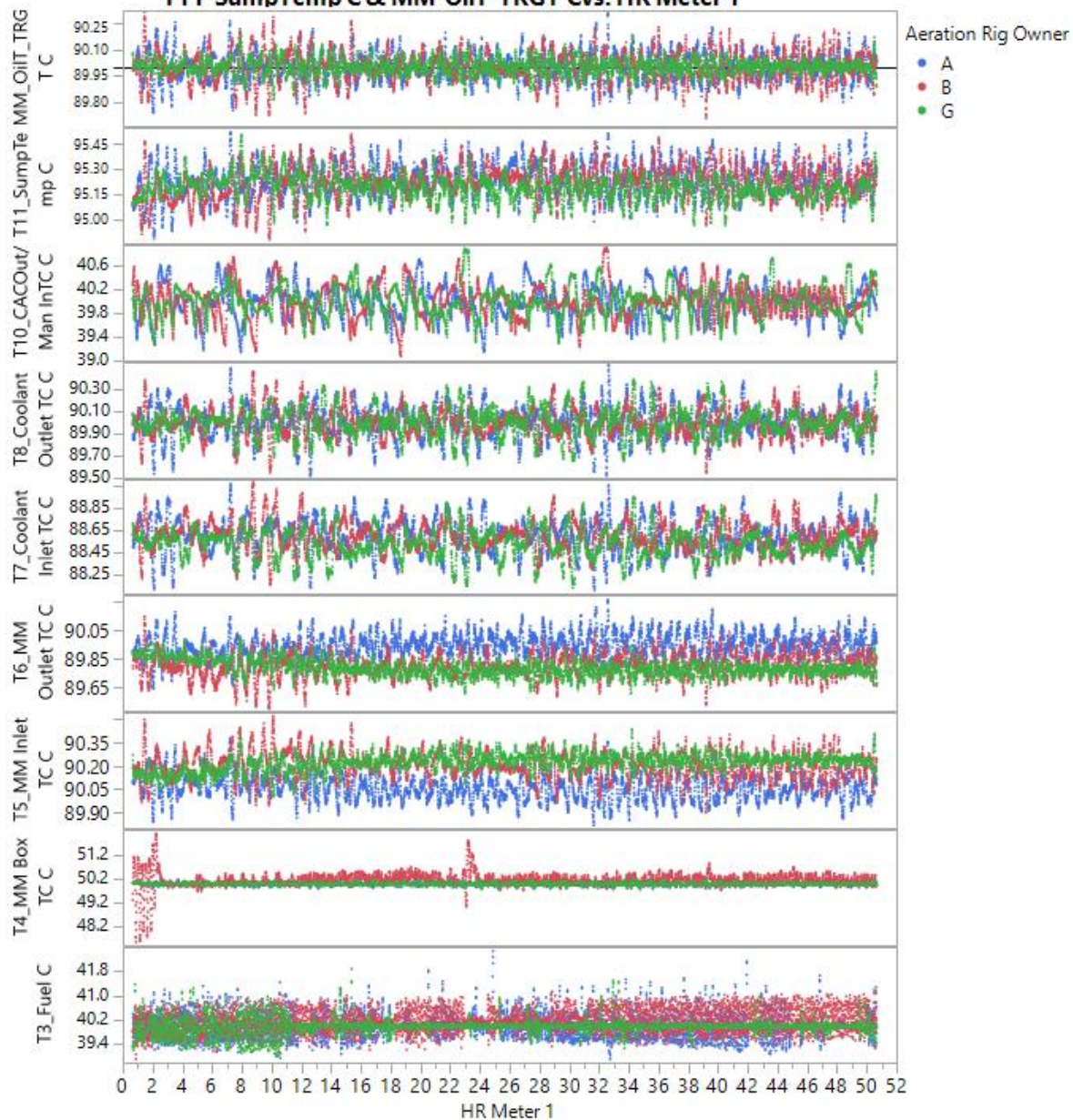
Intake RH % & EngSpd rpm & Exhaust BP kPa & Fuel Flow vs. HR Meter 1

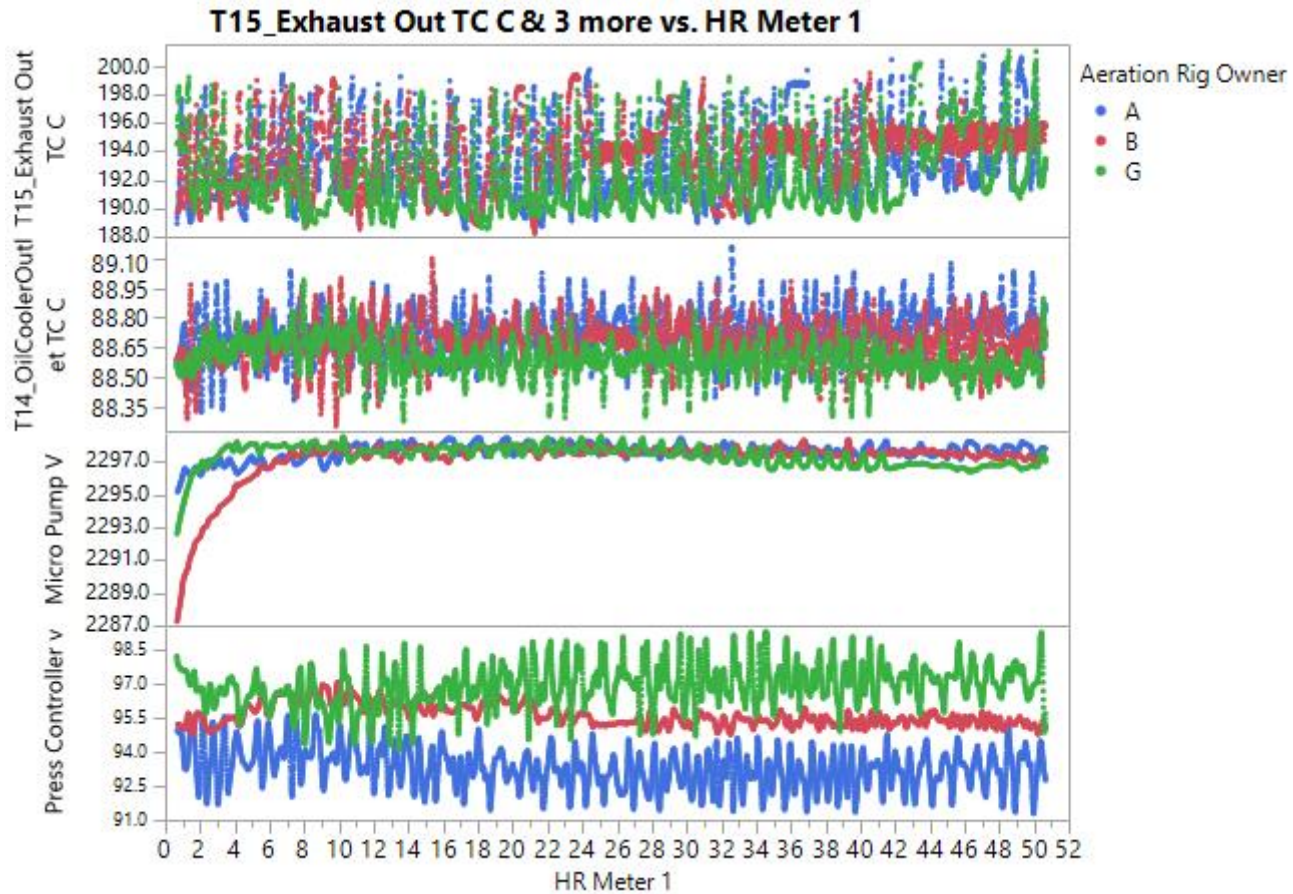


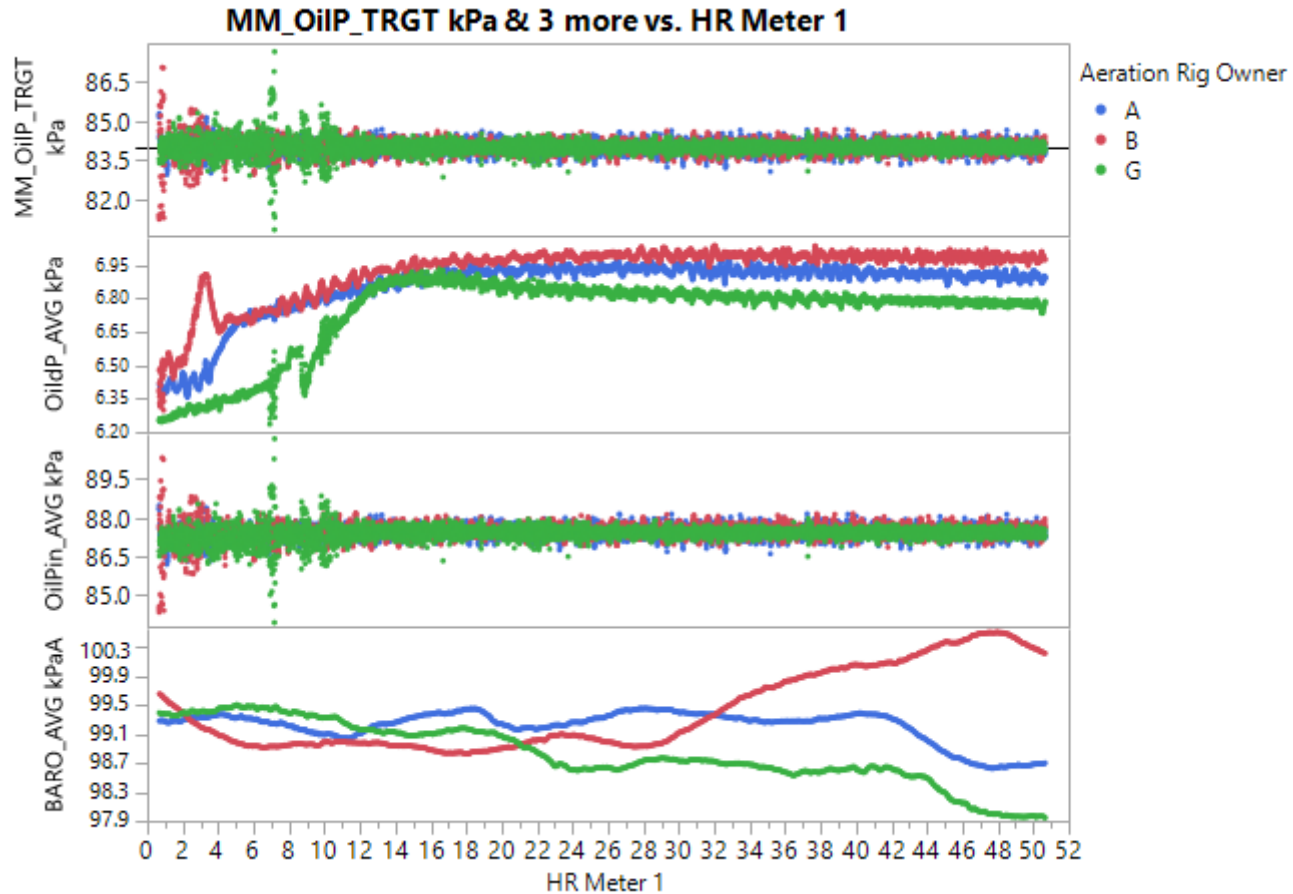
T00_Ambient C & T1_Intake Air C & T2_Oil Gallery C vs. HR Meter 1



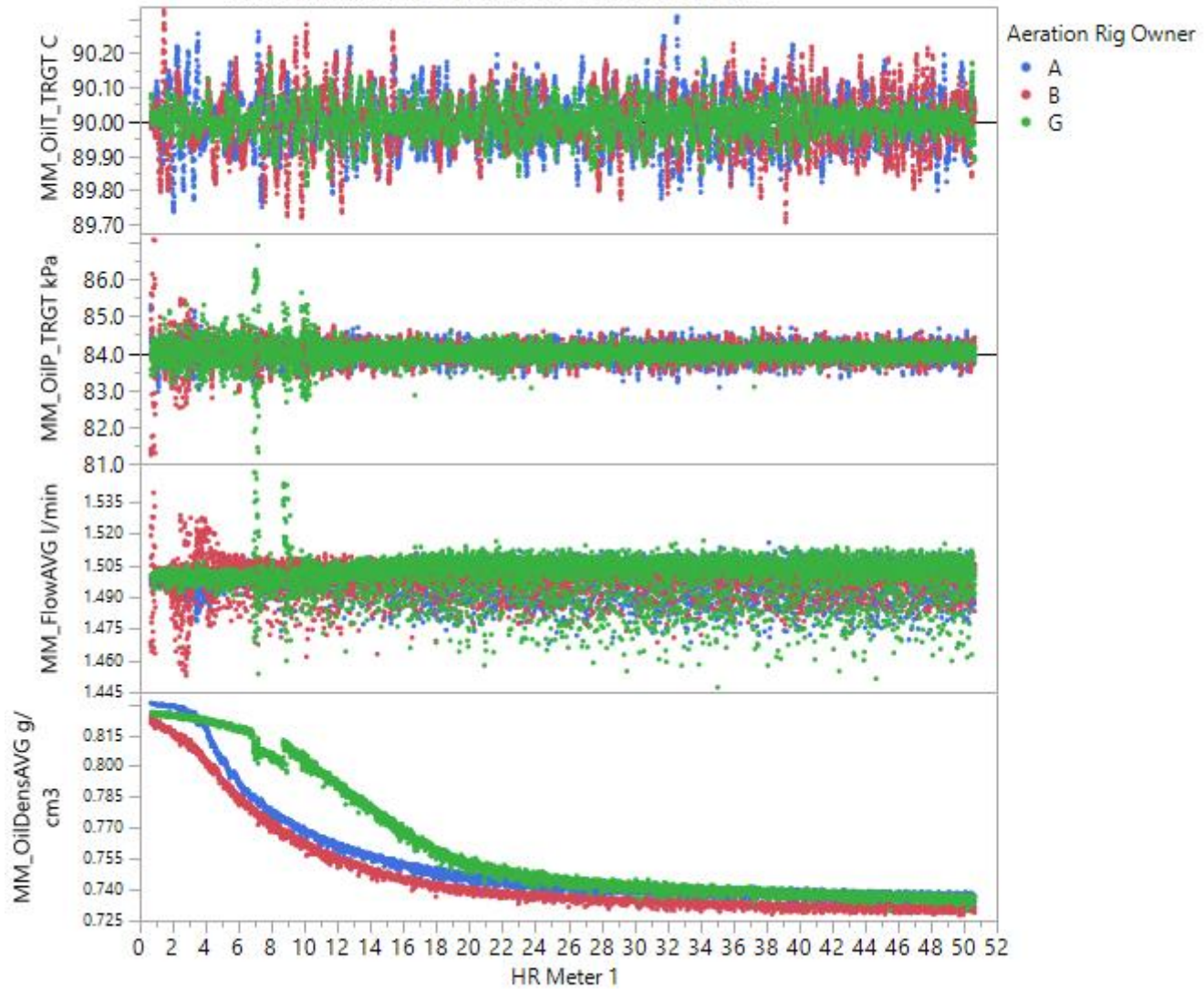
T3_Fuel C& T4_MM Box TC C & T5_MM Inlet TC C T6_MM Outlet TC C T7_Coolant Inlet TC C & T8_Coolant Outlet TC C & T10_CACOut/Man InTC C & T11 SumpTemp C & MM OilT TRGT Cvs. HR Meter 1



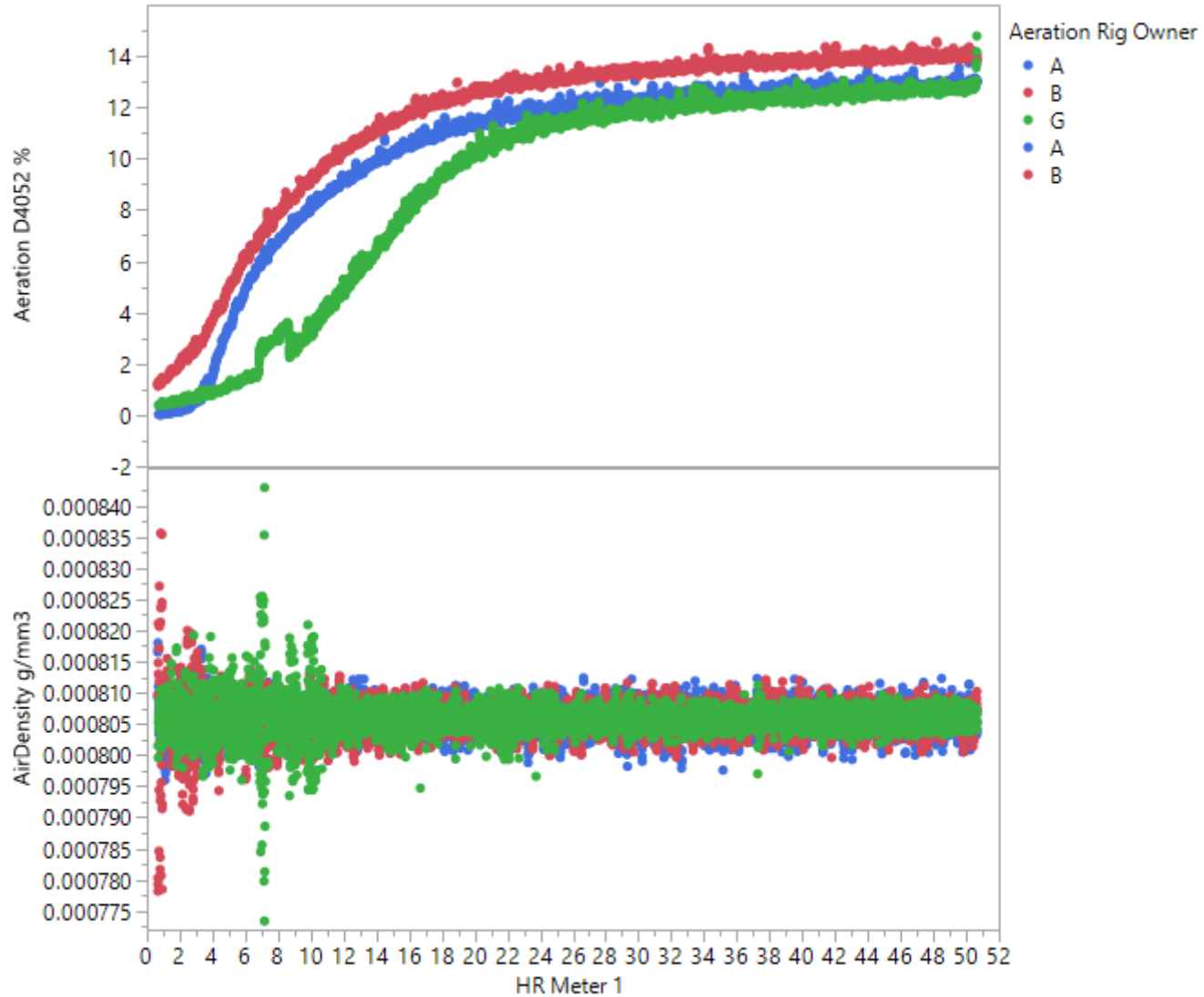




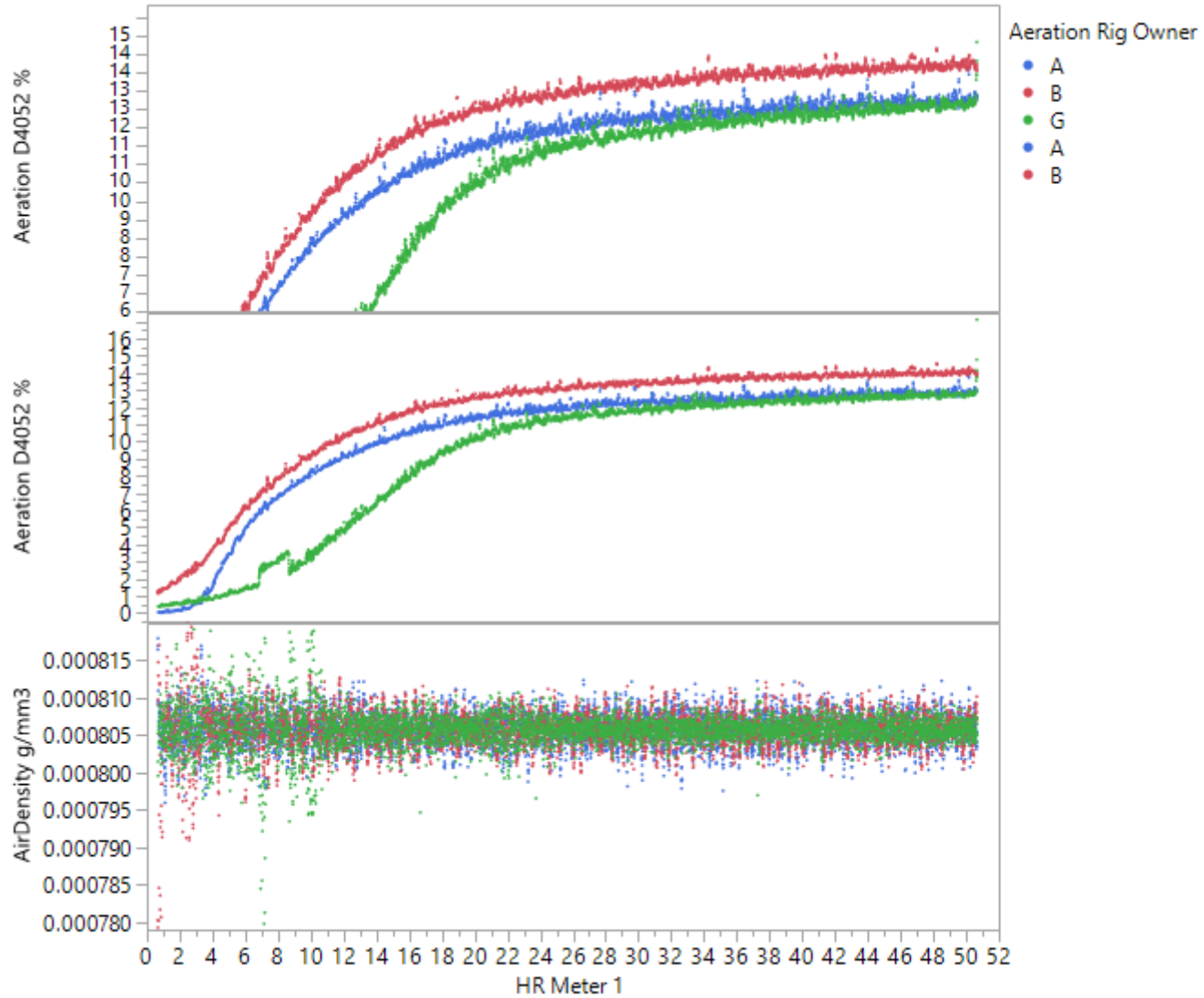
MM_OiIT_TRGT C & 3 more vs. HR Meter 1



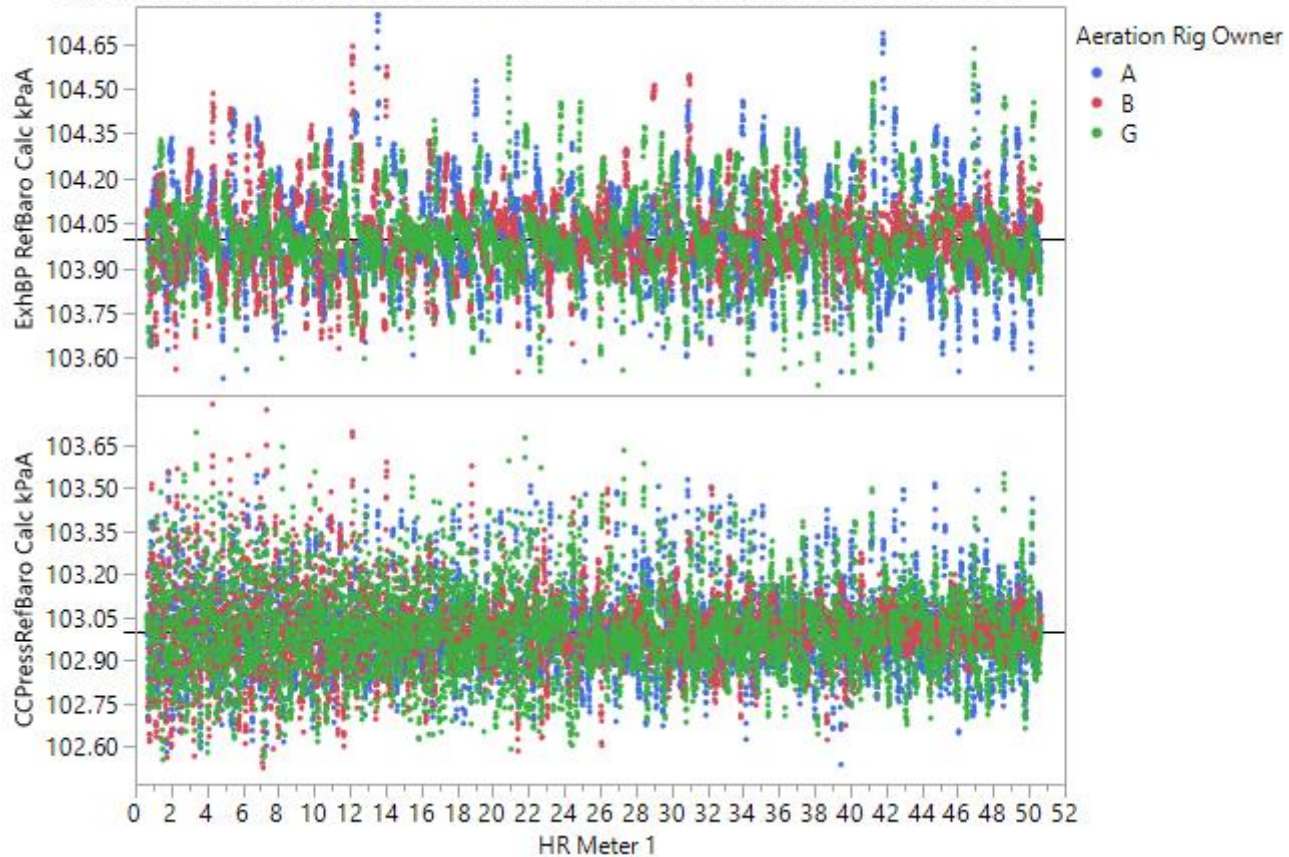
Aeration D4052 % & AirDensity g/mm3 vs. HR Meter 1



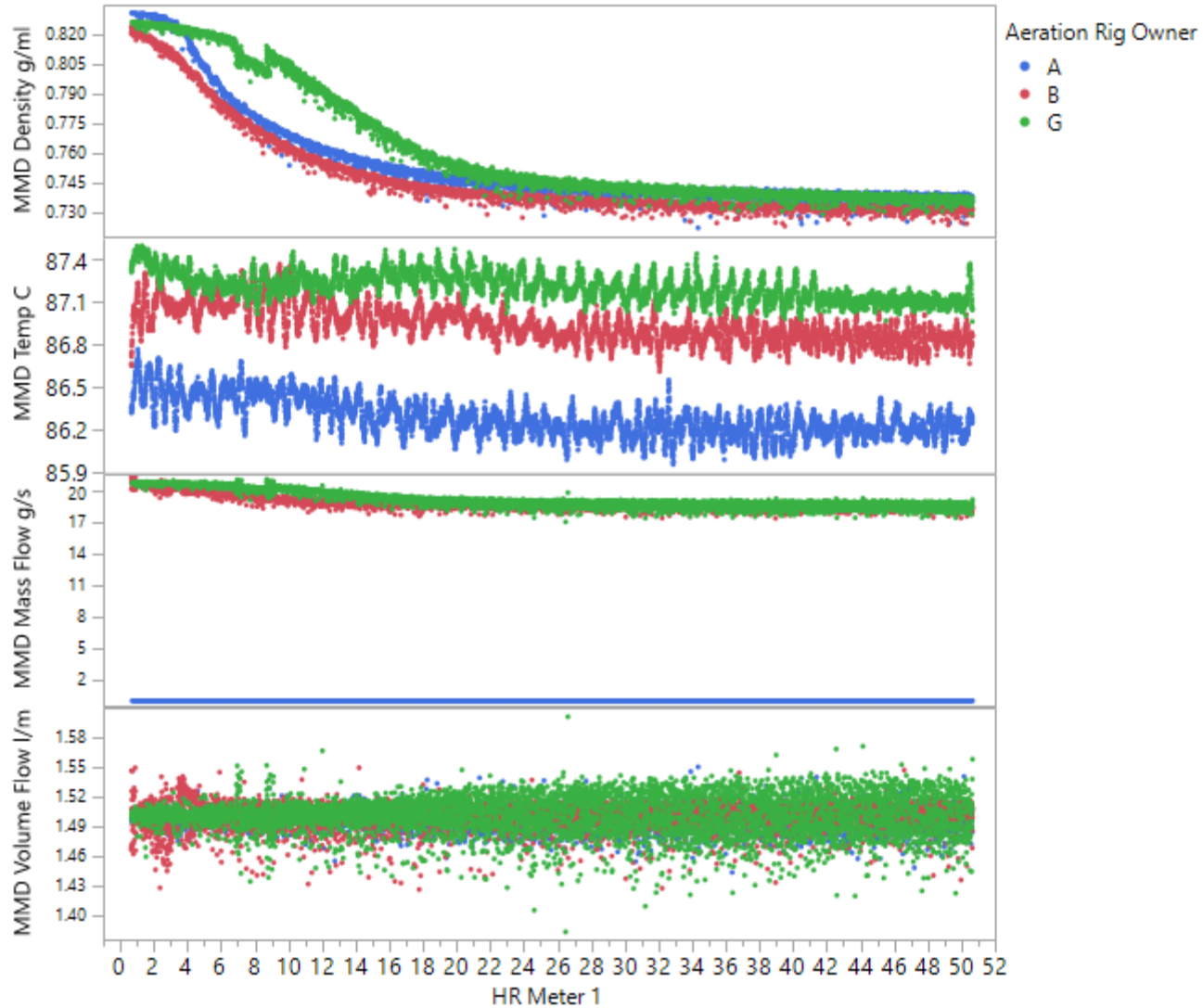
Aeration D4052 % & 2 more vs. HR Meter 1



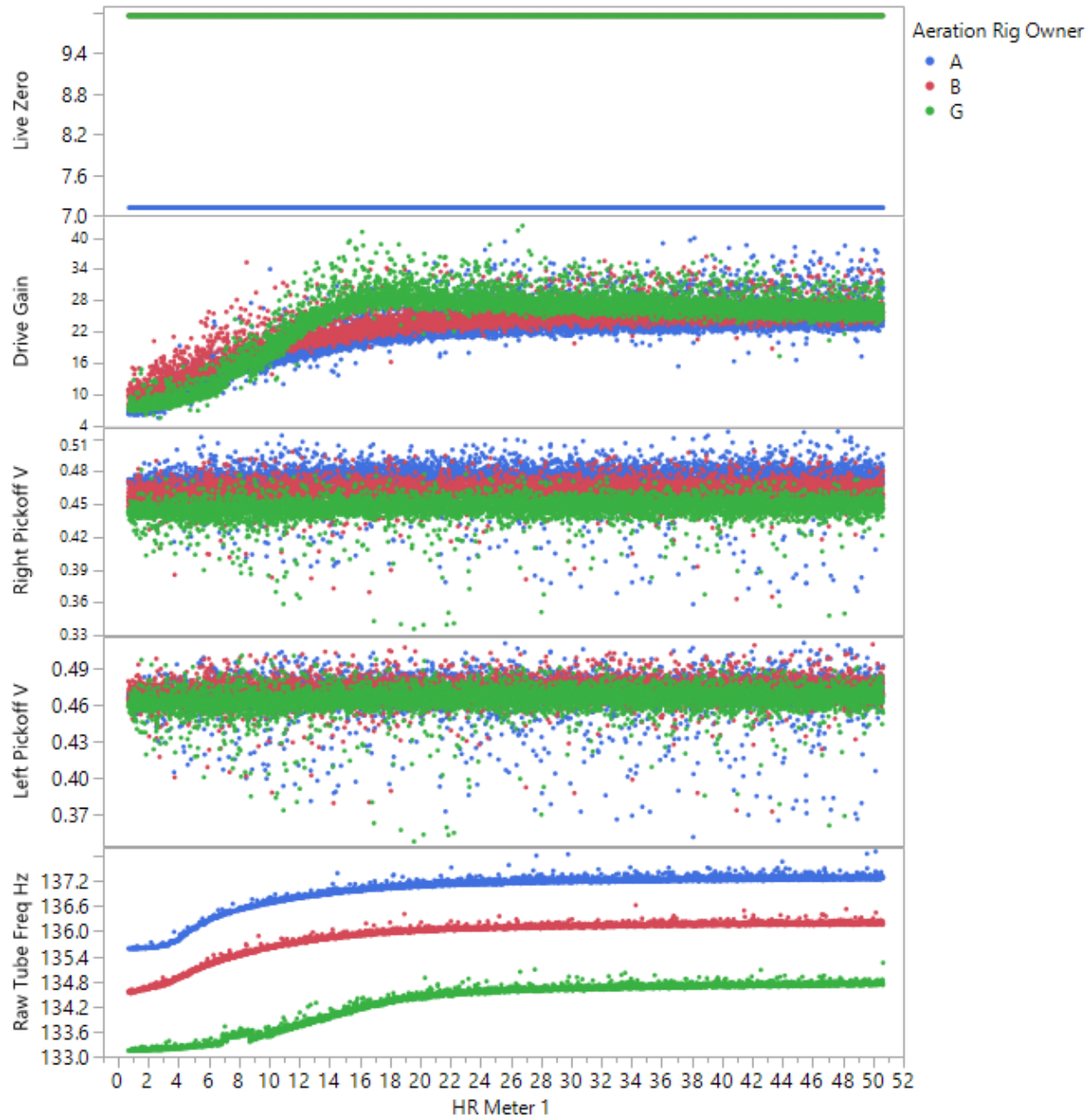
ExhBP RefBaro Calc kPaA & CCPressRefBaro Calc kPaA vs. HR Meter 1

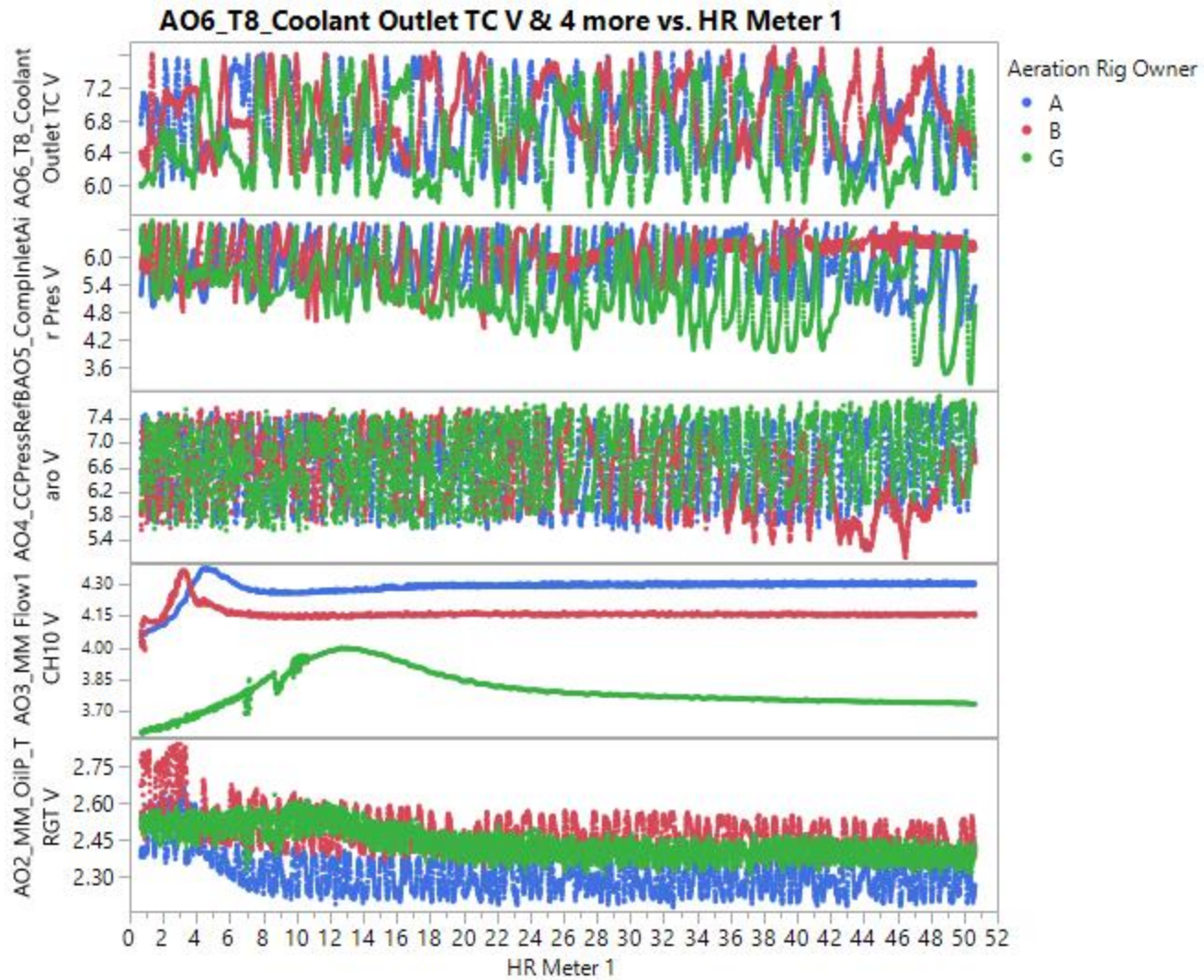


MMD Density g/ml & 3 more vs. HR Meter 1

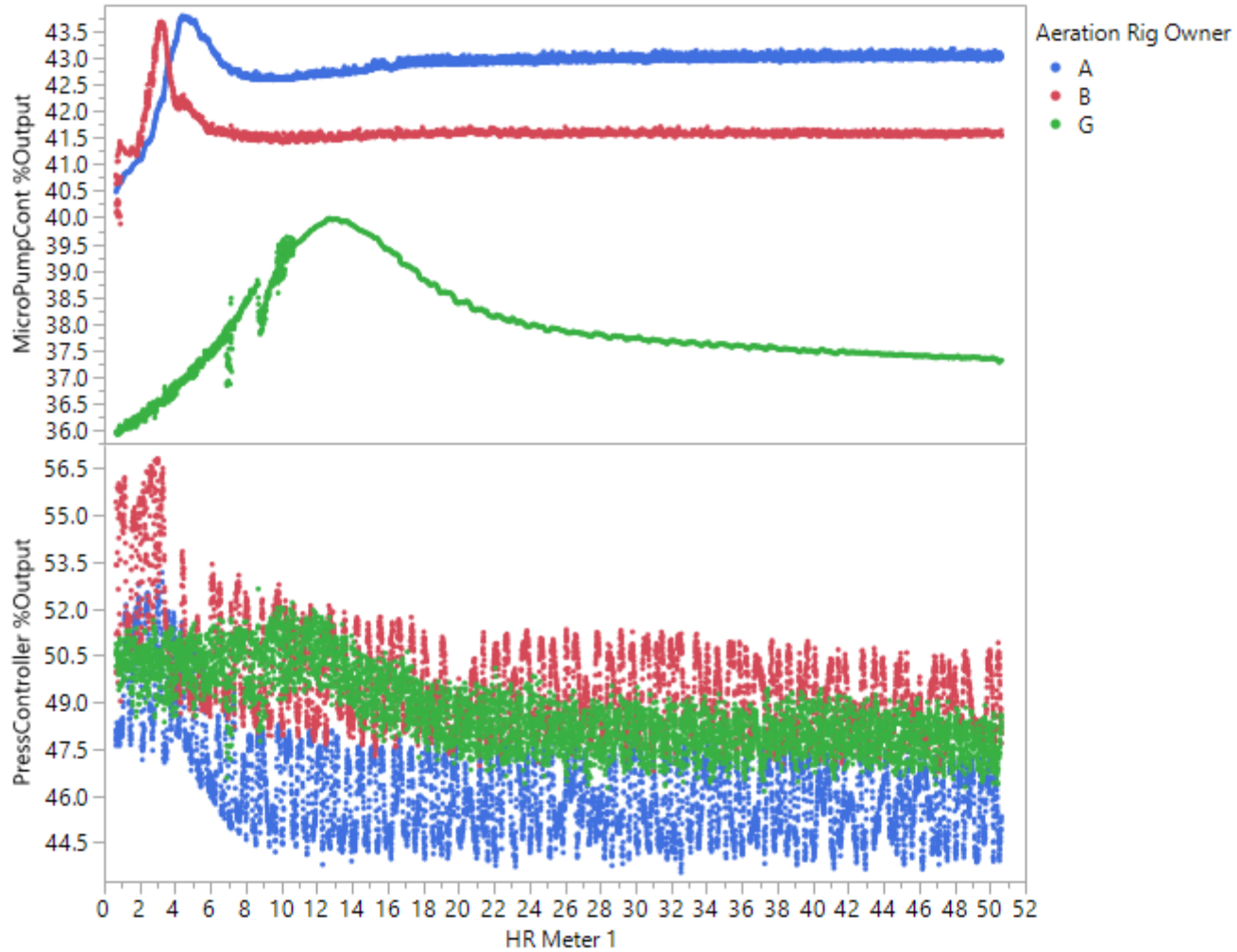


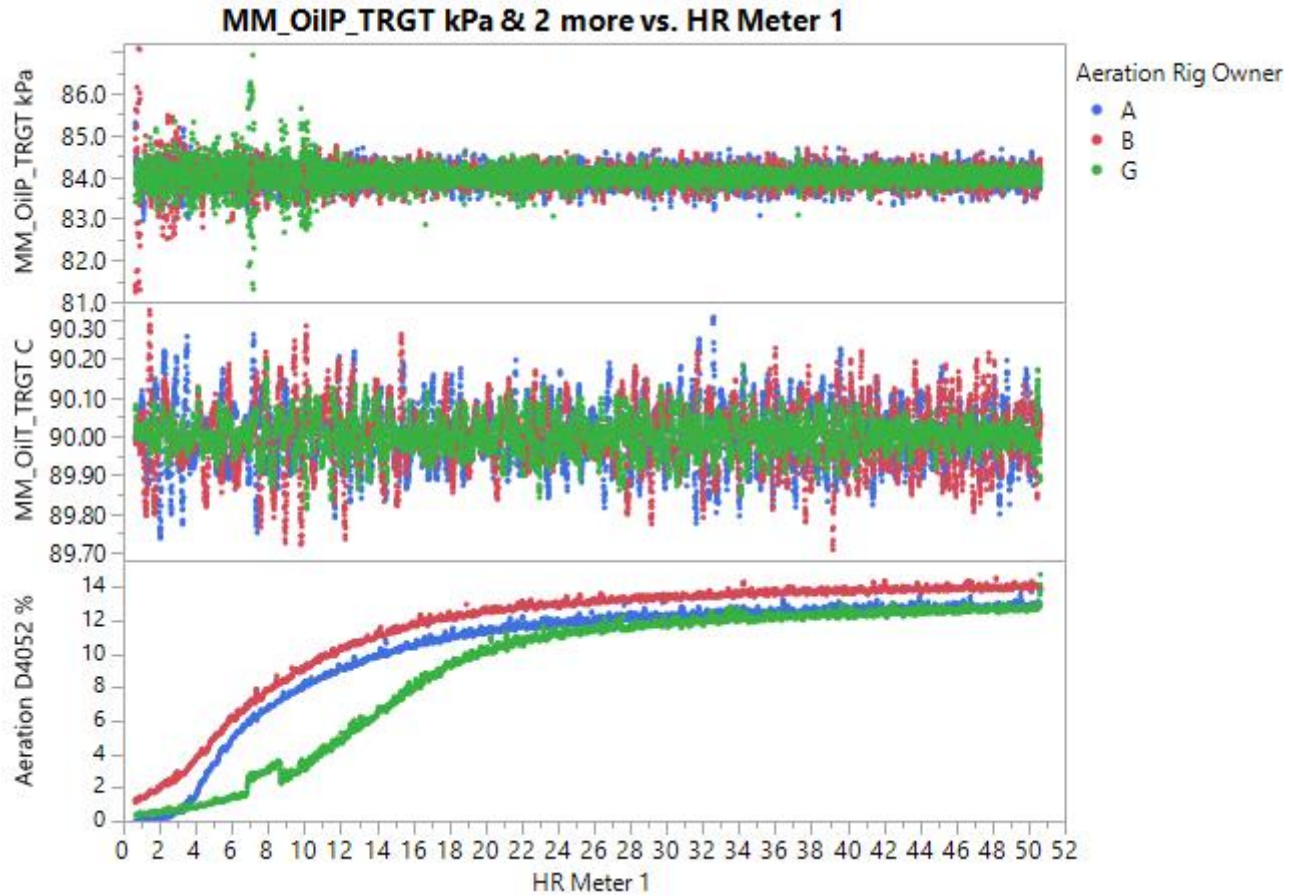
Live Zero & 4 more vs. HR Meter 1

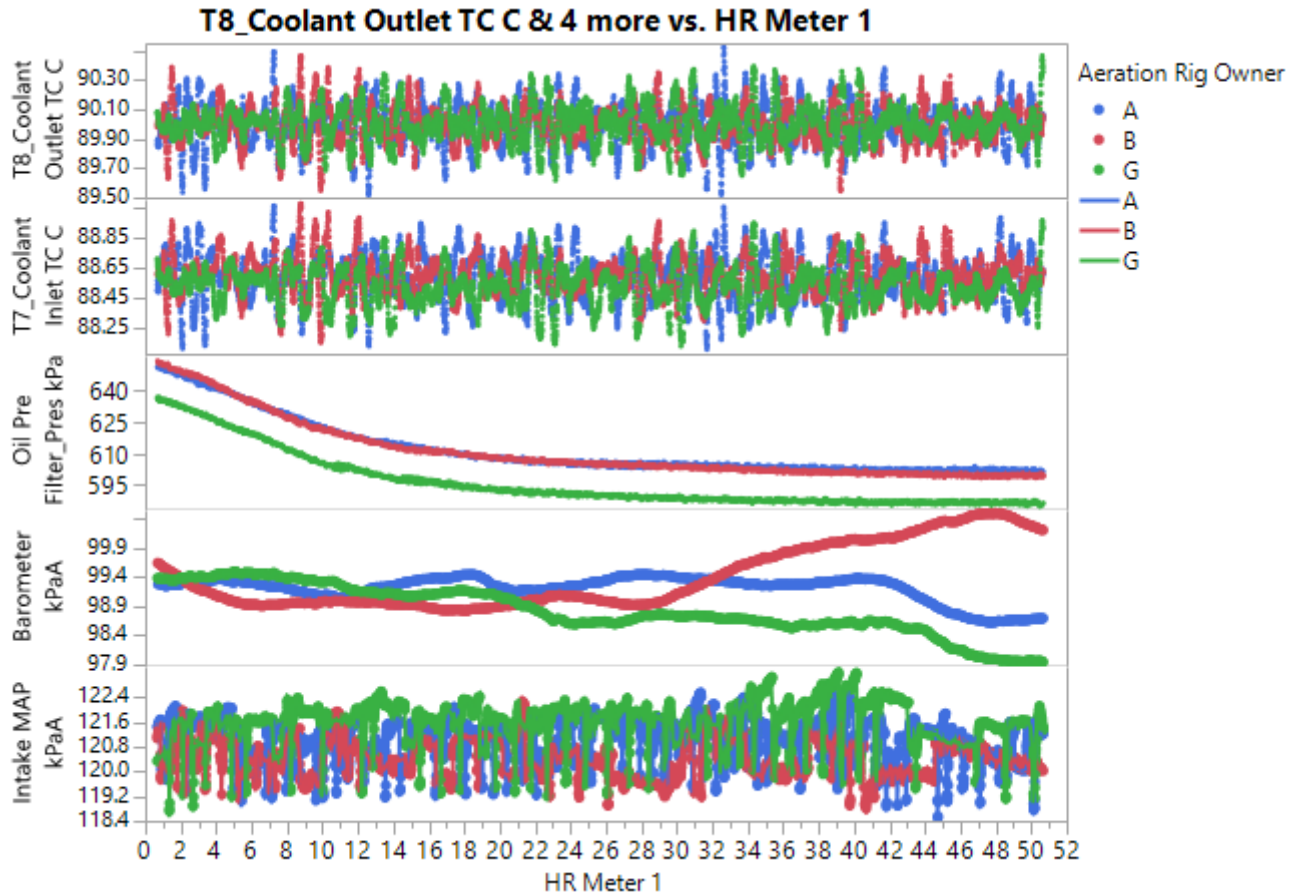




MicroPumpCont %Output & PressController %Output vs. HR Meter 1







Permission is given for storage of one copy in electronic means for reference purposes. Further reproduction of any material is prohibited without prior written consent of Infineum International Limited.

The information contained in this document is based upon data believed to be reliable at the time of going to press and relates only to the matters specifically mentioned in this document. Although Infineum has used reasonable skill and care in the preparation of this information, in the absence of any overriding obligations arising under a specific contract, no representation, warranty (express or implied), or guarantee is made as to the suitability, accuracy, reliability or completeness of the information; nothing in this document shall reduce the user's responsibility to satisfy itself as to the suitability, accuracy, reliability, and completeness of such information for its particular use; there is no warranty against intellectual property infringement; and Infineum shall not be liable for any loss, damage or injury that may occur from the use of this information other than death or personal injury caused by its negligence. No statement shall be construed as an endorsement of any product or process. For greater certainty, before use of information contained in this document, particularly if the product is used for a purpose or under conditions which are abnormal or not reasonably foreseeable, this information must be reviewed with the supplier of such information.

Links to third party websites from this document are provided solely for your convenience. Infineum does not control and is not responsible for the content of those third party websites. If you decide to access any of those websites, you do so entirely at your own risk. Please also refer to our Privacy Policy.

INFINEUM, 润英联, SYNACTO and the interlocking ripple device are Trade Marks of Infineum International Limited.
© 2018 Infineum International Limited. All rights reserved.