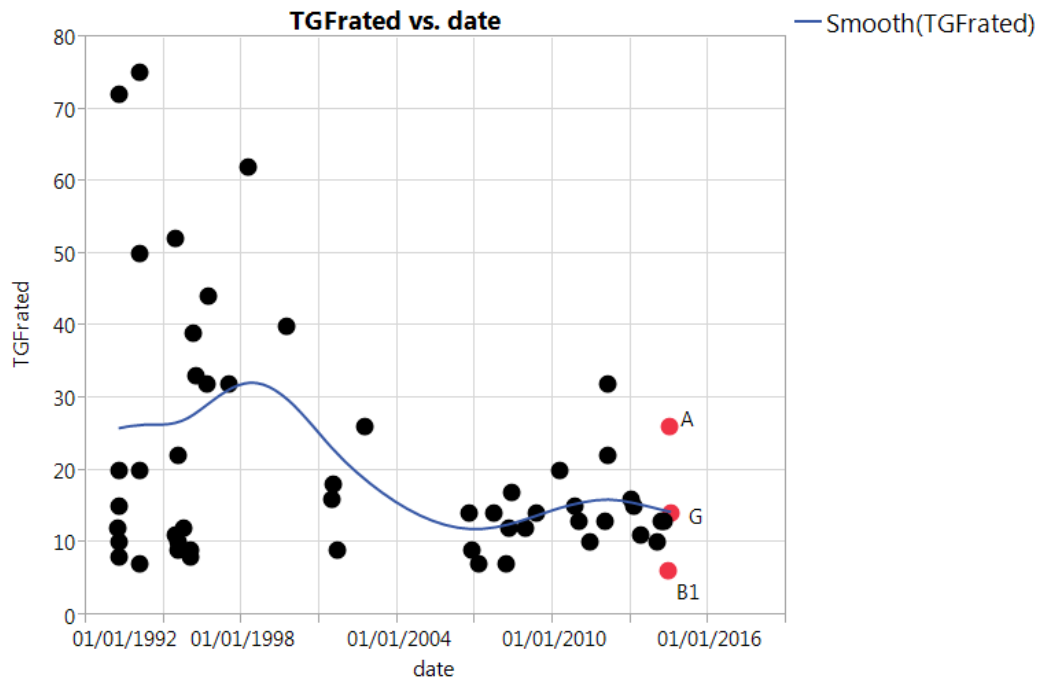
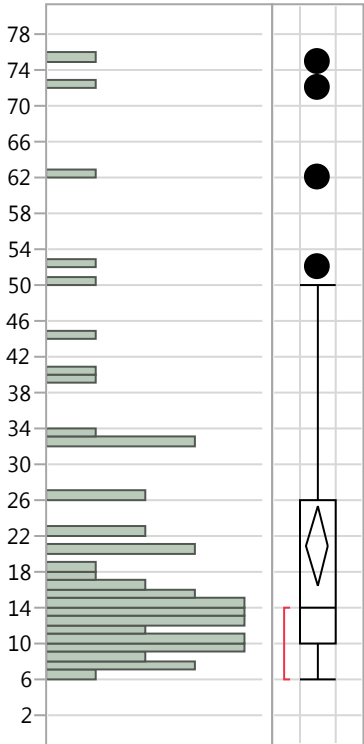


811 data: when we had the TGF correction discussions

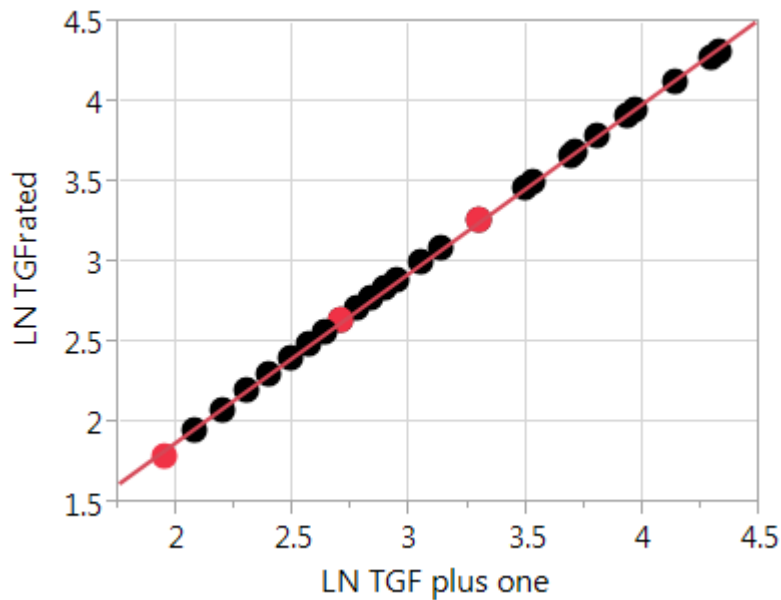
TGFrated: Currently, minimum is 6



Summary Statistics

Mean	20.888889
Std Dev	16.336863
Std Err Mean	2.2231654
Upper 95% Mean	25.347994
Lower 95% Mean	16.429784
N	54

LN TGFrated vs. LN TGF plus one



Summary of Fit

RSquare	0.99969
RSquare Adj	0.999685
Root Mean Square Error	0.011335
Mean of Response	2.815414
Observations (or Sum Wgts)	54

Mean and Standard deviations table: Before and after plus one

LN(TGFrated)				
Oil	Liner	# of tests	Mean(TGF)	Std Dev(TGF)
809-1	1Y355	30	3.3688081	0.6702206
811-1	1Y355	29	3.0182802	0.7416768
811-2*	1Y355	20	2.8940084	0.7819953
809/811	1Y355	59	3.196514725	0.706225937
809-1	1Y3998	32	2.695332089	0.604926448
811-1	1Y3998	3	2.4080083	0.4001887
811-2	1Y3998	22	2.603554304	0.389327474
809/811	1Y3998	57	2.644786779	0.524358722

pooled Stande

LN (TGF rated plus one)				
Oil	Liner	# of tests	Mean(LN (TGF +1))	Std Dev(LN (TGF +1))
809-1	1Y355	30	3.410591	0.64212
811-1	1Y355	29	3.077855	0.705547
811-2*	1Y355	20	2.961267	0.744084
809/811	1Y355	59	3.247043	0.674023
809-1	1Y3998	32	2.771324	0.56397
811-1	1Y3998	3	2.498514	0.362927
811-2	1Y3998	22	2.679636	0.361554
809/811	1Y3998	57	2.721577	0.488165

pooled Standard dev.

Scenario 5C before plus 1

Scenario 5C		n=54	LN TGF rated		
Model with liner only: equivalent to taking the mean by liner					
Level	LSMean	Std Error	n		
1Y355	3.01828	0.112267	29		
1Y3998	2.580089	0.120915	25		
CF	0.438191				
new liner std pooled	0.524359				

Scenario 5C after plus one

Scenario 5C		n=54	LN (TGF rated plus 1)		
Model with liner only: equivalent to taking the mean by liner					
Level	LSMean	Std Error	n		
1Y355	3.077855	0.10628	29		
1Y3998	2.657901	0.114467	25		
CF	0.419954				
new liner std pooled	0.488165				