

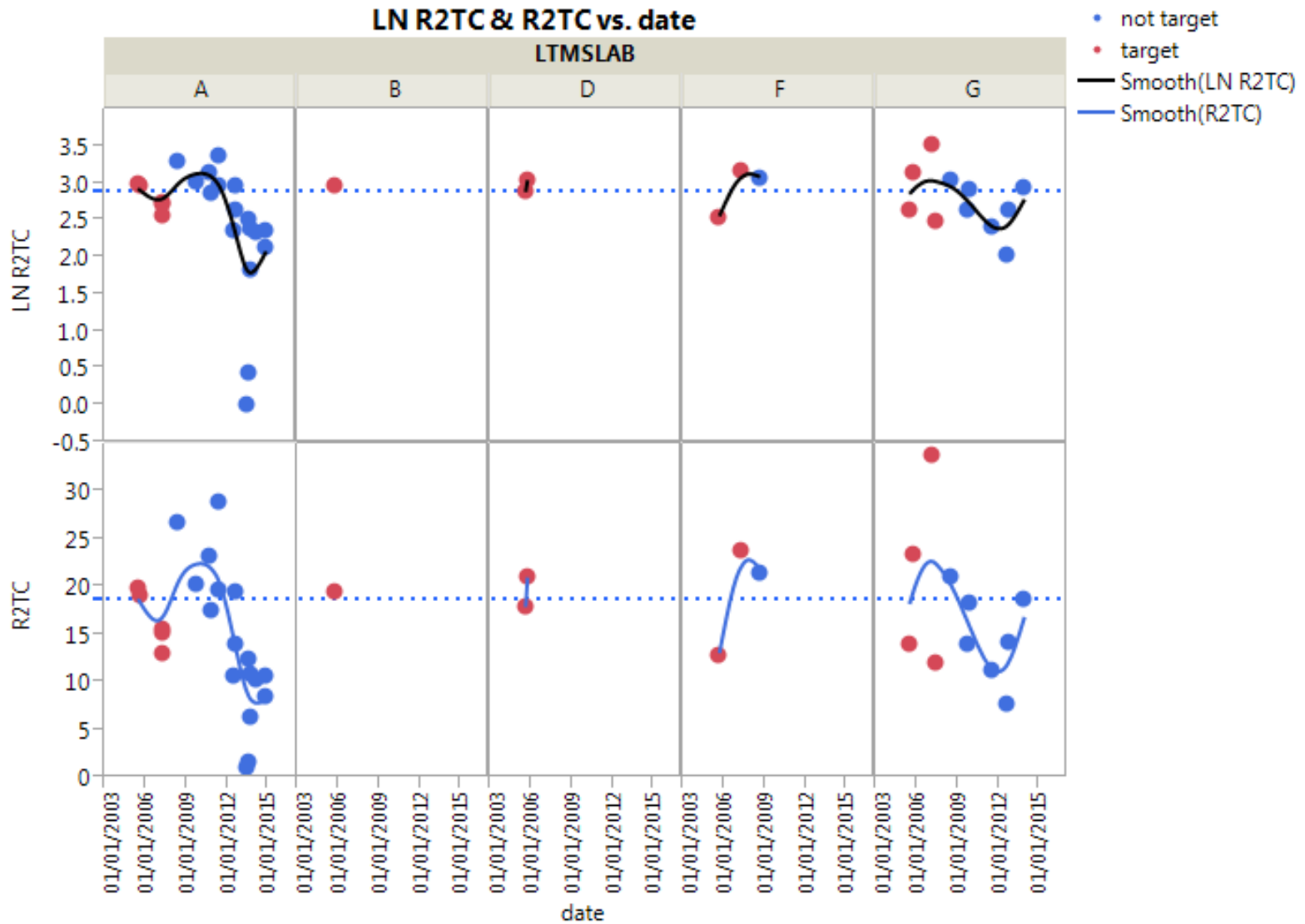
C13: 2nd Ring Top Carbon Reference data

Elisa Santos

12/5/2014 (few updated slides from last SP meeting)

- After analyzing the R2TC data, I would like to share with you a few thoughts
 - I would like to show you a few plots again
 - I would like to ask the TMC to post piston data for 2014 tests (3 tests plus 1 from Lab G that did not EOT yet)
 - Before we discuss potential correction factors, please, wait to get the test result from Lab G expected to EOT on Friday, 21st.

Recent data are generated by Labs A and G



Means and Standard deviations



Oil 831
Chart = Yes
Removing
Two tests
From lab A

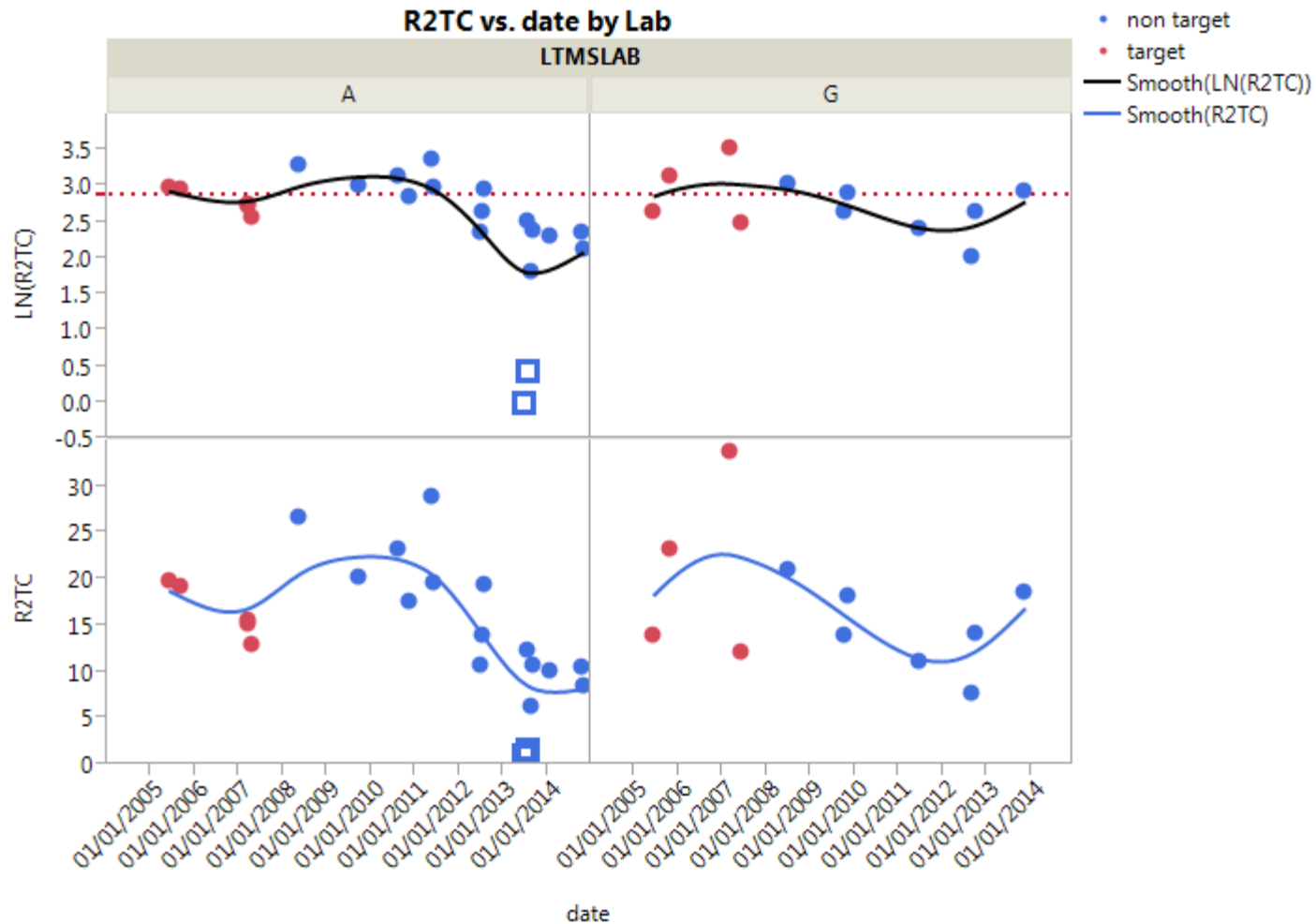
factor 2	LTMSLAB	N Rows	Mean(LN(R2TC))	Std Dev(LN(R2TC))
target	A	5	2.7913	0.1779
target	B	1	2.9642	
target	D	2	2.9662	0.1135
target	F	2	2.8550	0.4421
target	G	4	2.9491	0.4751
before 2013	A	9	2.9570	0.3103
before 2013	F	1	3.0662	
before 2013	G	6	2.6140	0.3590
after	A	6	2.2532	0.2426
after	G	1	2.9291	

SECOND RING TOP CARBON
Unit of Measure: LN (Demerits)

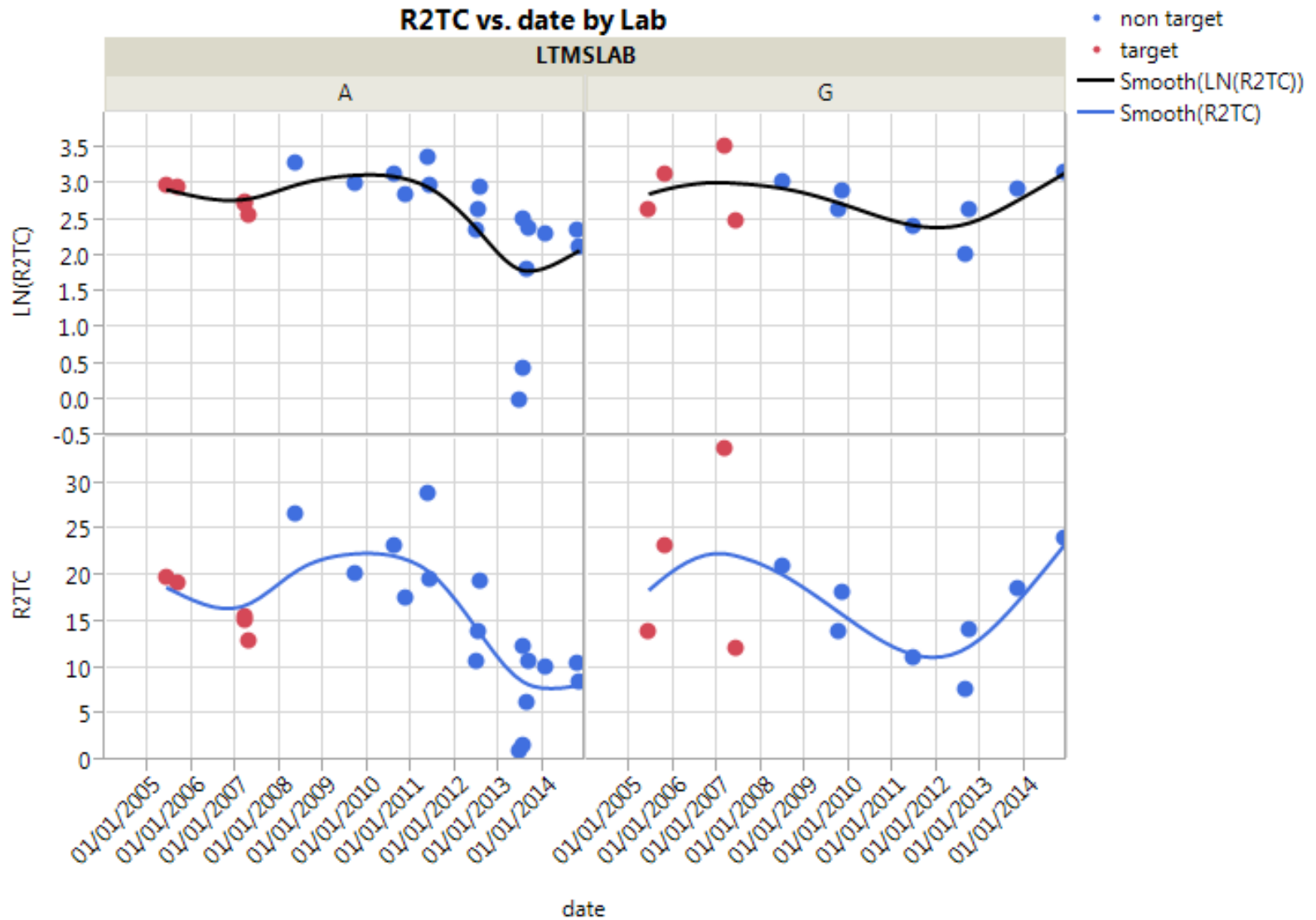
From LTMS

Reference Oil	Mean	Standard Deviation
831	2.8828	0.2900
831-1	2.8828	0.2900
831-2	2.8828	0.2900

Labs A and G only: PC-10B, 831, 831-1 and 831-2



Updated plot



Labs A and G only: PC-10B, 831, 831-1 and 831-2



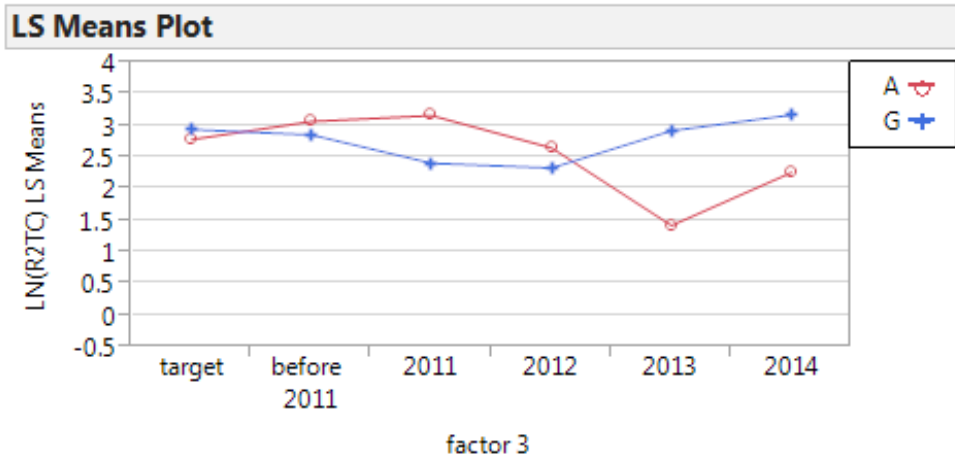
factor 2	LTMSLAB	N Rows	Mean(LN(R2TC))	Std Dev(LN(R2TC))
target	A	5	2.7913	0.1779
target	G	4	2.9491	0.4751
before 2013	A	9	2.9570	0.3103
before 2013	G	6	2.6140	0.3590
after	A	6	2.2532	0.2426
after	G	1	2.9291	

factor 3	LTMSLAB	N Rows	Mean(LN(R2TC))	Std Dev(LN(R2TC))
target	A	5	2.7913	0.1779
target	G	4	2.9491	0.4751
before 2011	A	4	3.0759	0.1813
before 2011	G	3	2.8629	0.2035
2011	A	2	3.1695	0.2758
2011	G	1	2.4159	
2012	A	3	2.6569	0.2988
2012	G	2	2.3397	0.4314
2013	A	5	1.4290	1.1469
2013	G	1	2.9291	
2014	A	3	2.2687	0.1210
2014	G	1	3.1797	

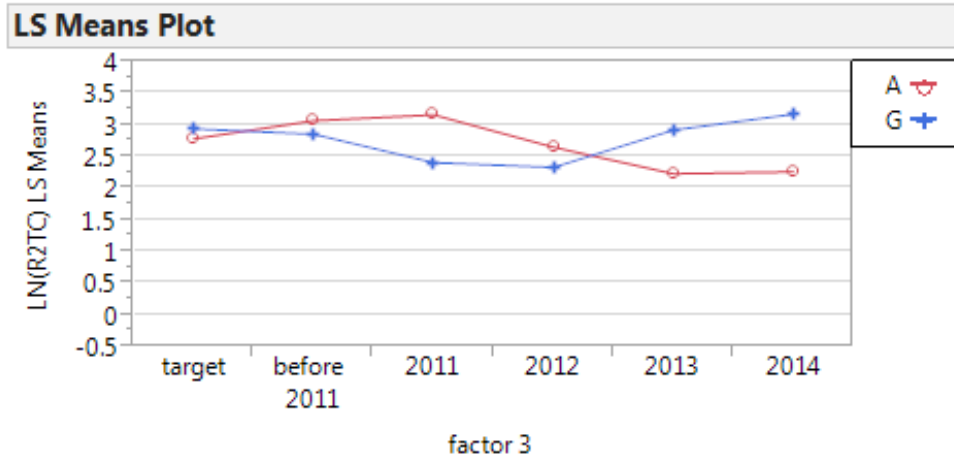
New table

Similar analysis... but with more levels for time... (new slide)

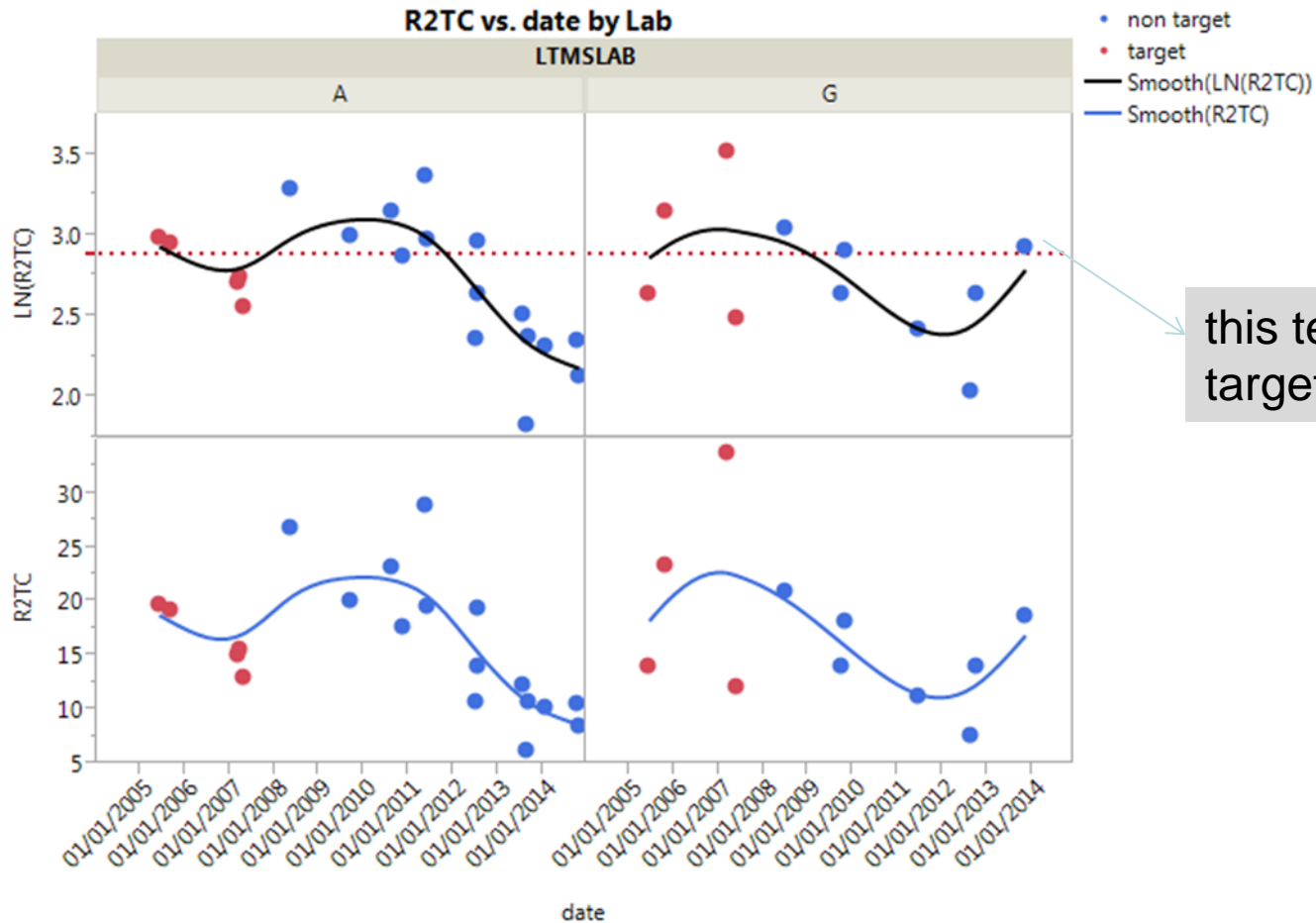
All data



Removing tests with R2TC= 1 and 1.54 from Lab A



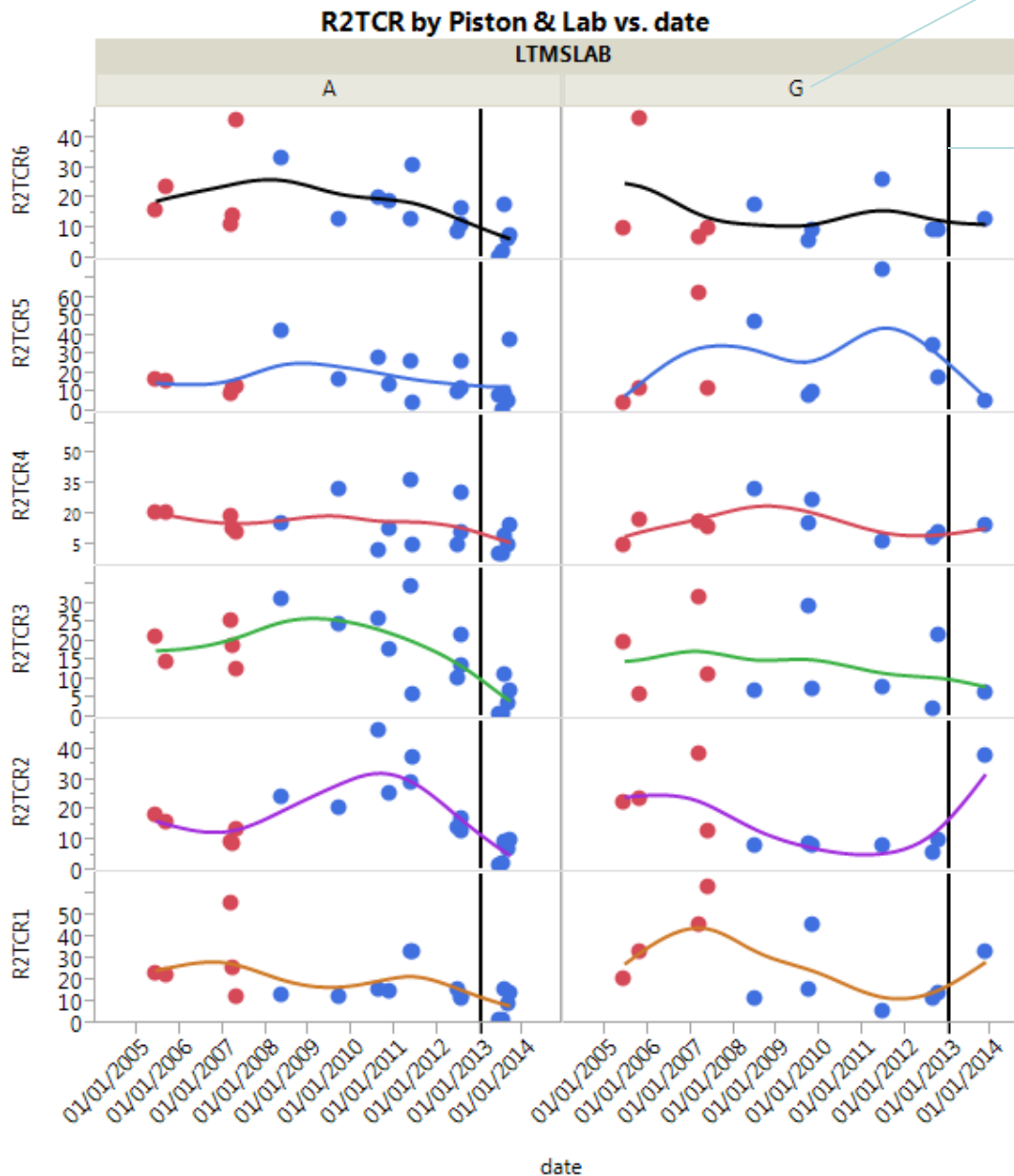
Labs A and G only – after removing the highlighted lower test results



this test result is on target

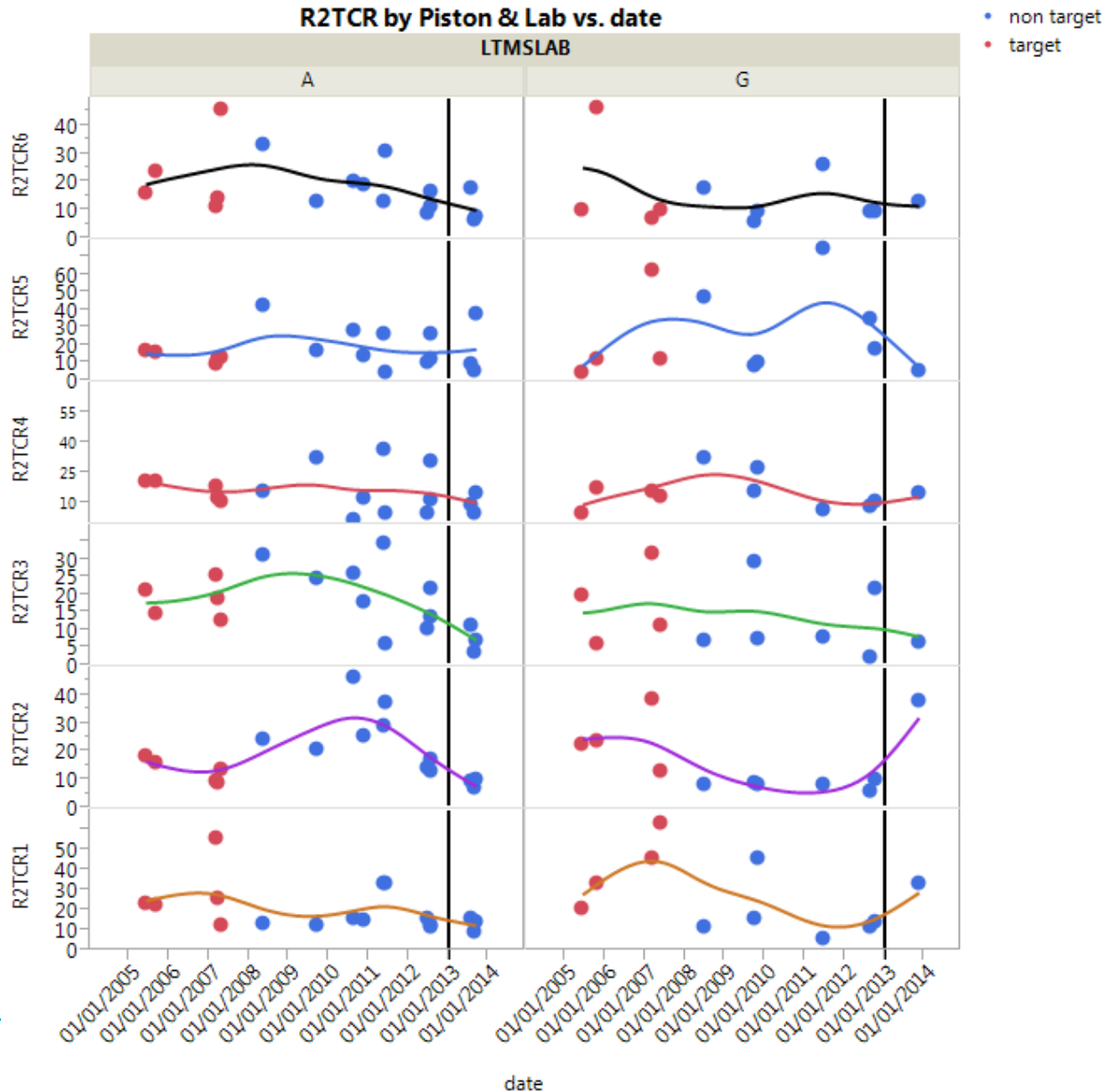
Piston data up to end of 2013

One test in 2013



2013 starts

Piston data up to end of 2013

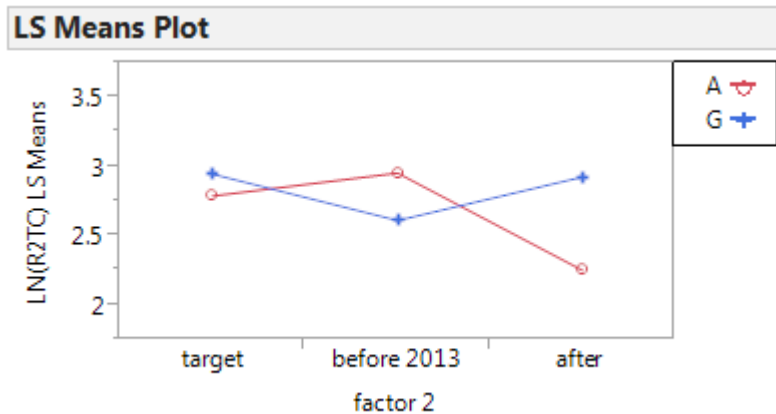


After removing the highlighted low tests results

Average differences (LN R2TC): eliminating two tests highlighted earlier

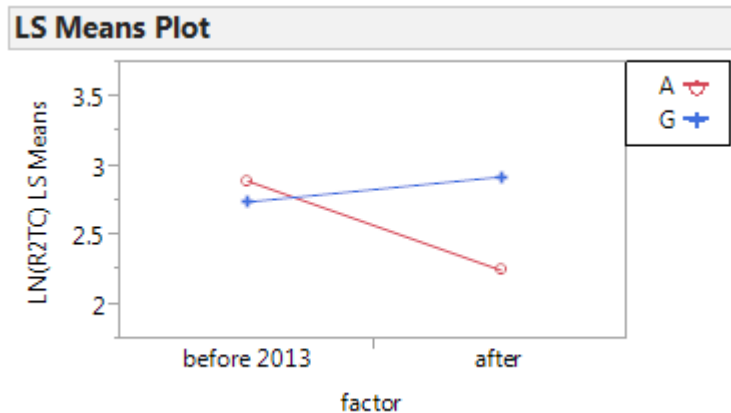
Models: Lab, time factor and interaction Lab * time factor

Time factor: (one with three levels -- "Target", "Before 2013" and "2013 or later"; the other with two levels "Before 2013" and "2013 or later")



Level	Least Sq Mean
A,before 2013 A	2.9570386
G,target A	2.9490872
G,after A B	2.9290581
A,target A B	2.7912867
G,before 2013 A B	2.6140110
A,after B	2.2532133

Levels not connected by same letter are significantly different.



Level	Least Sq Mean
G,after A B	2.9290581
A,before 2013 A	2.8978415
G,before 2013 A	2.7480415
A,after B	2.2532133

Levels not connected by same letter are significantly different.

0.644

Lab A, not G

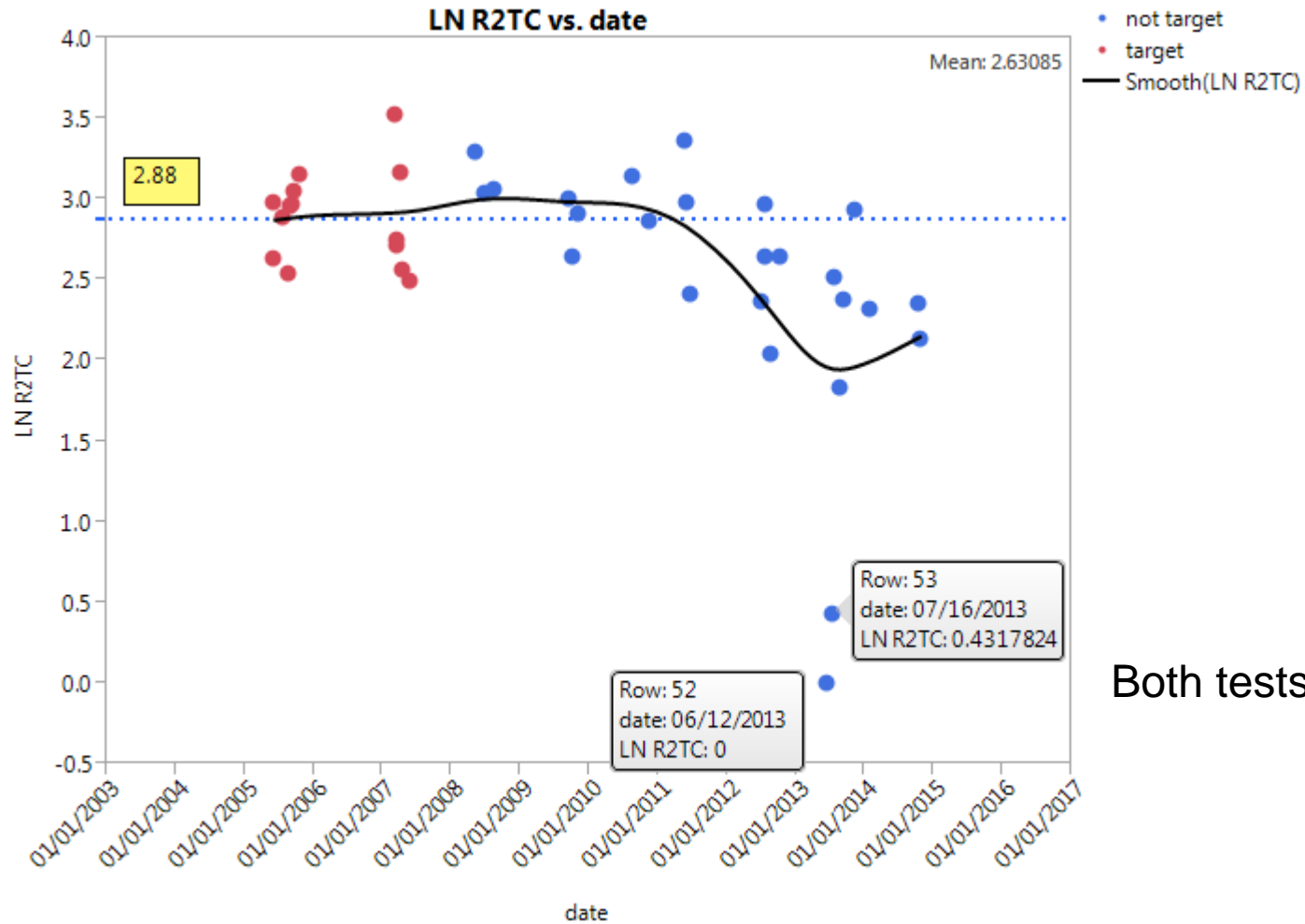
SECOND RING TOP CARBON
Unit of Measure: LN (Demerits)

Reference Oil	Mean	Standard Deviation
831	2.8828	0.2900
831-1	2.8828	0.2900
831-2	2.8828	0.2900

Usable data for analysis

LTMSLAB	factor 2	N Rows
A	target	5
A	before 2013	9
A	after	6
B	target	1
D	target	2
F	target	2
F	before 2013	1
G	target	4
G	before 2013	6
G	after	1
H	before 2013	1

2nd Ring Top Carbon: transformed values over time



Both tests in lab A

