



A Program of ASTM International

Test Monitoring Center

<http://astmtmc.cmu.edu>

ASTM Reference Testing Semi-Annual Report ASTM D6794 – EOWT

October 2020

EOWT Test Activity by Treat Rate*

Test Status	Validity Code	Number of Tests by Water Treat Rate				Total
		0.6%	1.0%	2.0%	3.0%	
Acceptable Calibration Test	AC	216	216	216	216	864
Failed Calibration Test	OC	3	3	3	3	12
Operationally Invalid, by Lab	LC	1	1	1	1	4
Total						880

- 5 labs reported data
- EOWT was formalized into the LTMS on 9/1/2020

*April 1, 2020 – September 31, 2020

EOWT Test Activity by Reference Oil*

Test Status	Validity Code	Number of Tests by Reference Oil		Total
		79	77-3	
Acceptable Calibration Test	AC	431	433	864
Failed Calibration Test	OC	6	6	12
Operationally Invalid, by Lab	LC	2	2	4
Total				880

*April 1, 2020 – September 31, 2020

EOWT Failed Tests

Failed Parameter	Number of Tests				Total
	0.6%	1.0%	2.0%	3.0%	
Severe Change in Flowrate	0	1	1	2	4
Mild Change in Flowrate	3	2	2	1	8
Total					12

EOWT Failed Tests by Lab

Failed Parameter	LTMS Lab					#
	A	B	G	I	L	
Severe Change in Flowrate	0	0	4	0	0	4
Mild Change in Flowrate	0	1	6	0	1	8
Total	0	1	10	0	1	12

EOWT Lost Tests*

Status	Cause	Number of Tests				#
		0.6%	1.0%	2.0%	3.0%	
Invalid	Incorrect Test Temperature	1	1	1	1	4
Total						4

*Invalid and aborted calibration tests

EOWT Lost Tests by Lab

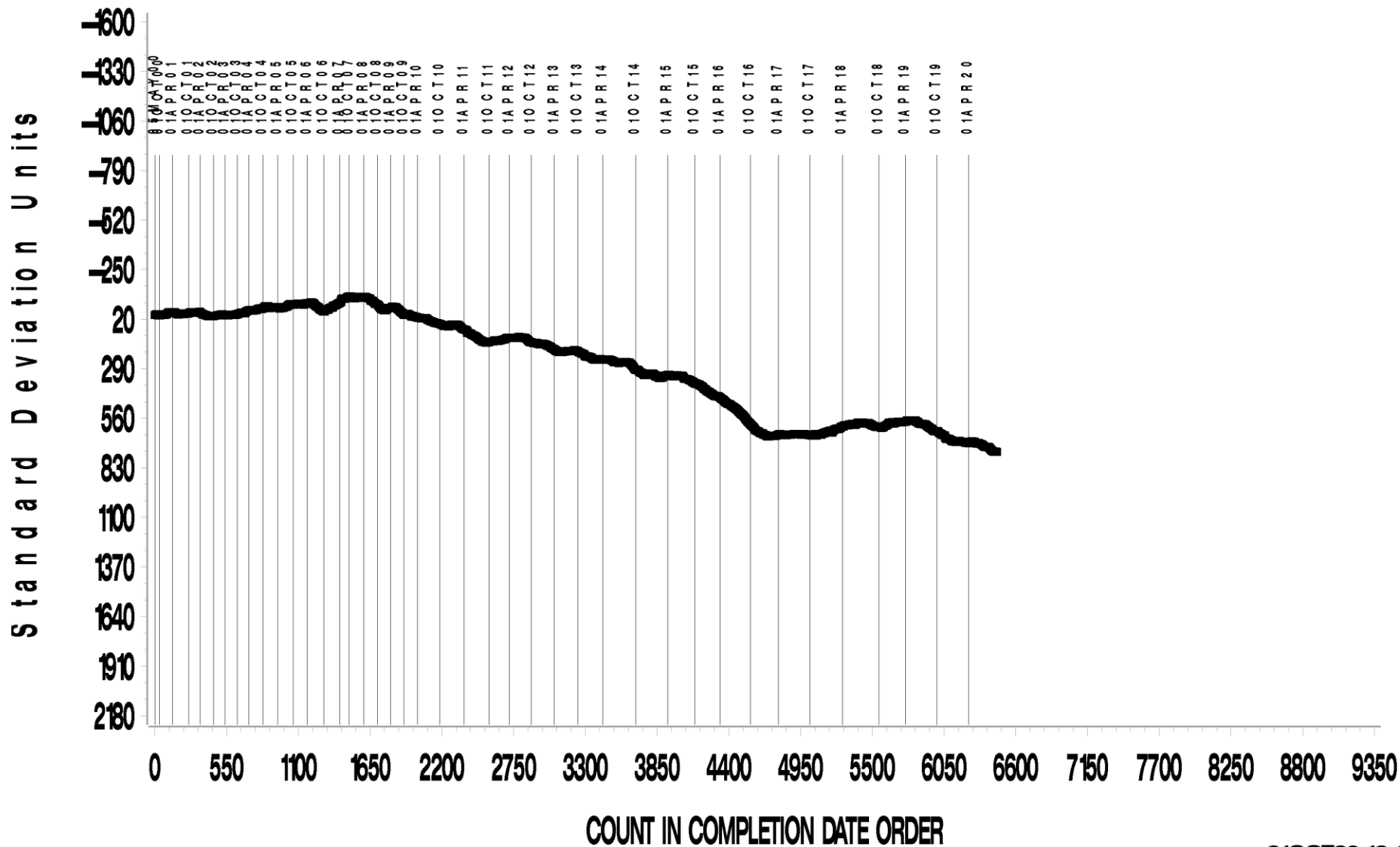
Cause	LTMS Lab					#
	A	B	G	I	L	
Incorrect Test Temperature	0	0	0	0	4	4
Total	0	0	0	0	4	4

EOWT Test Severity

- ▶ Change in flowrate is trending severe for all treat rates.

CUSUM Severity Analysis

Historical Chart

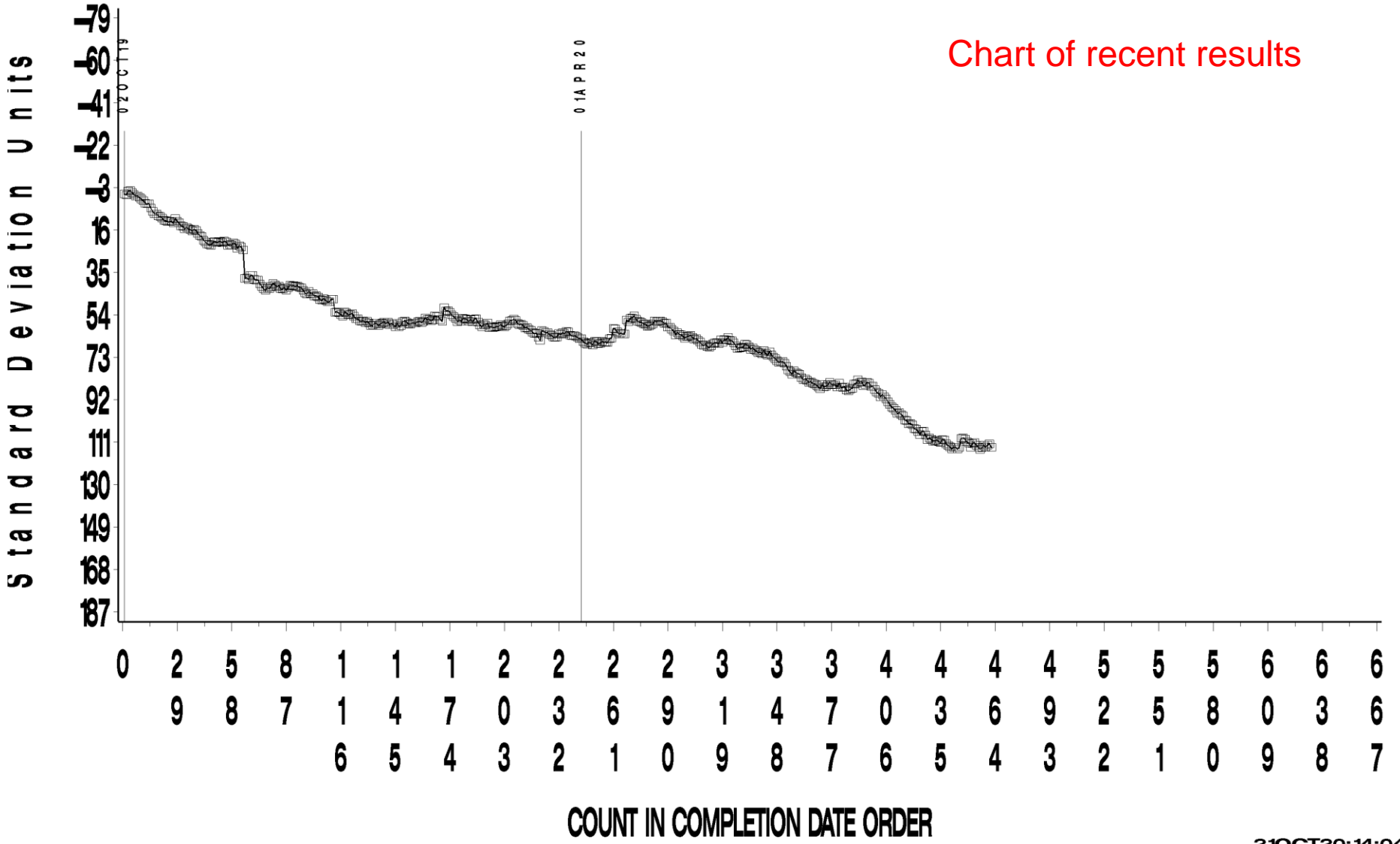


EOWT INDUSTRY OPERATIONALLY VALID DATA
 CFA 0.6% Water Treat Rate
 20 —25 ML CHANGE IN FLOWRATE AVG.



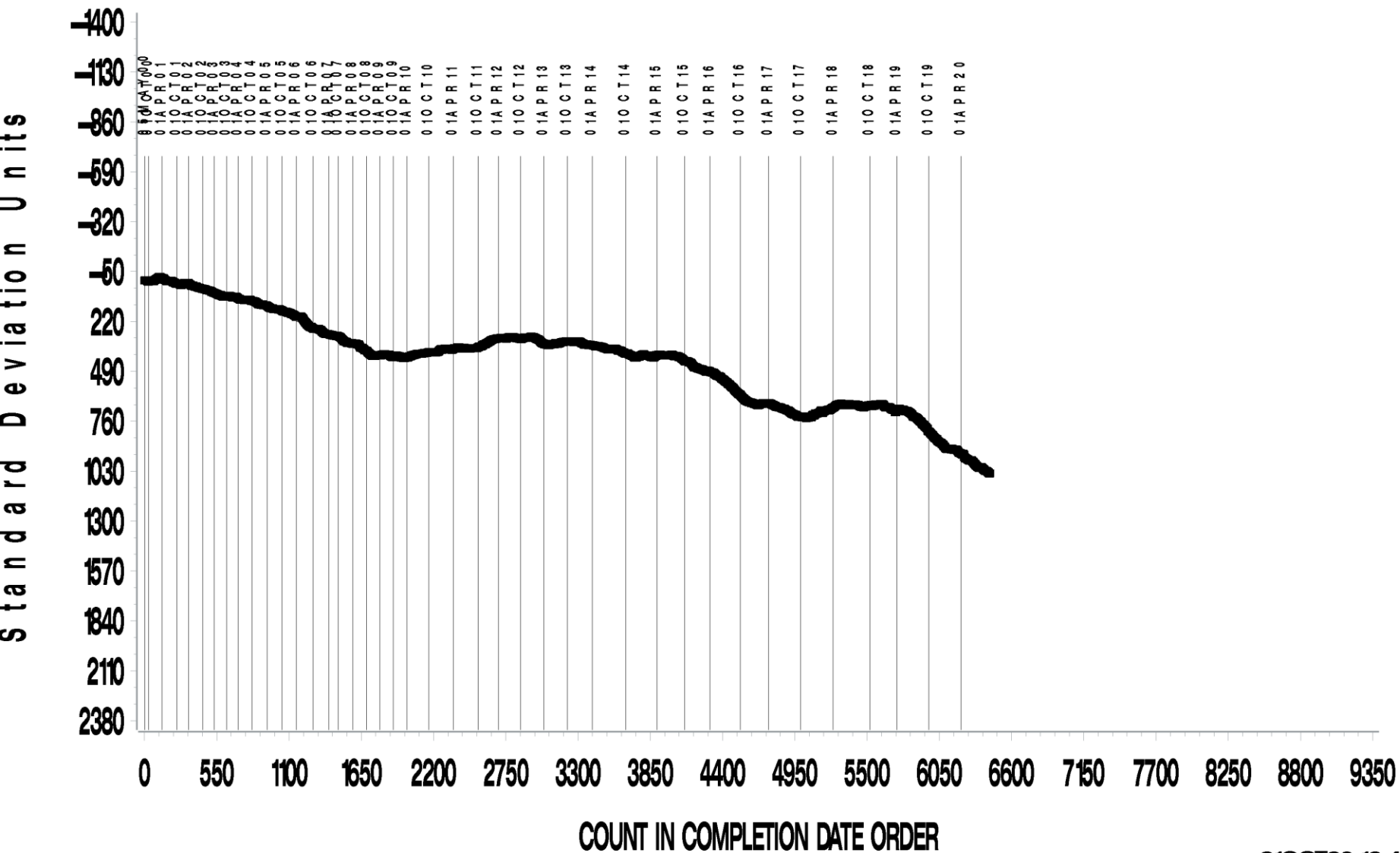
CUSUM Severity Analysis

Chart of recent results



CUSUM Severity Analysis

Historical Chart

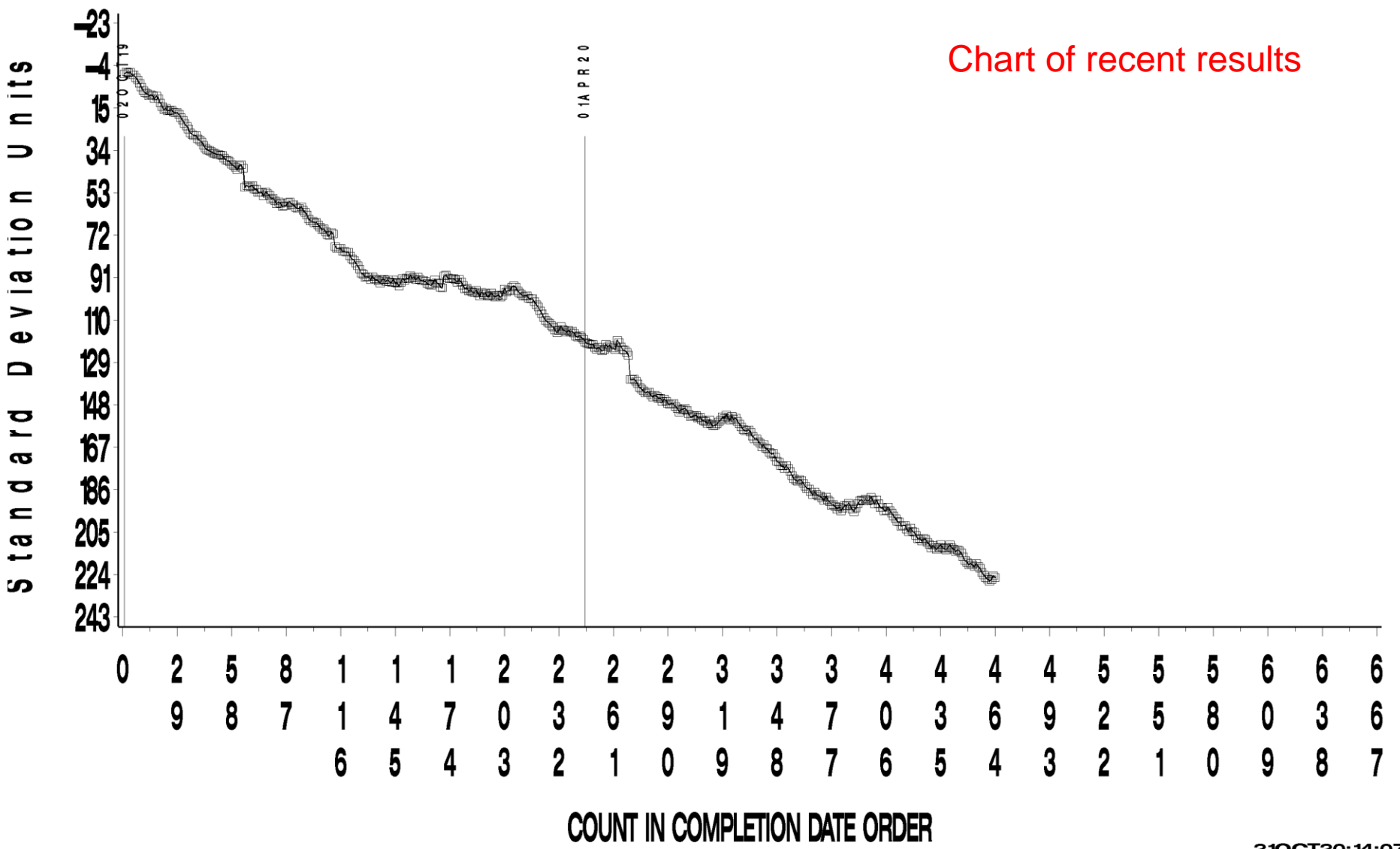


EOWT INDUSTRY OPERATIONALLY VALID DATA
CFA 1% Water Treat Rate
20 —25 ML CHANGE IN FLOWRATE AVG.



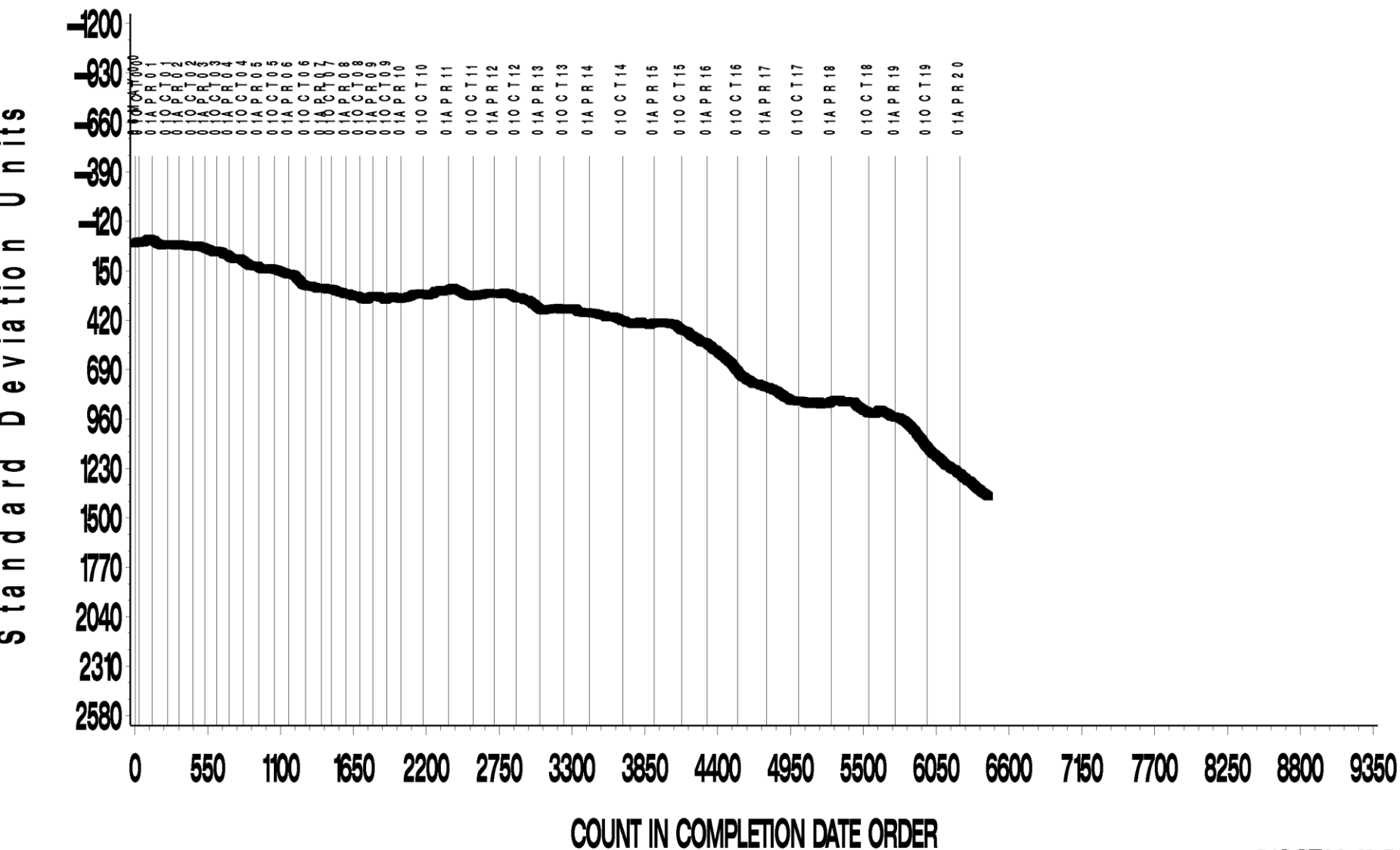
CUSUM Severity Analysis

Chart of recent results



CUSUM Severity Analysis

Historical Chart

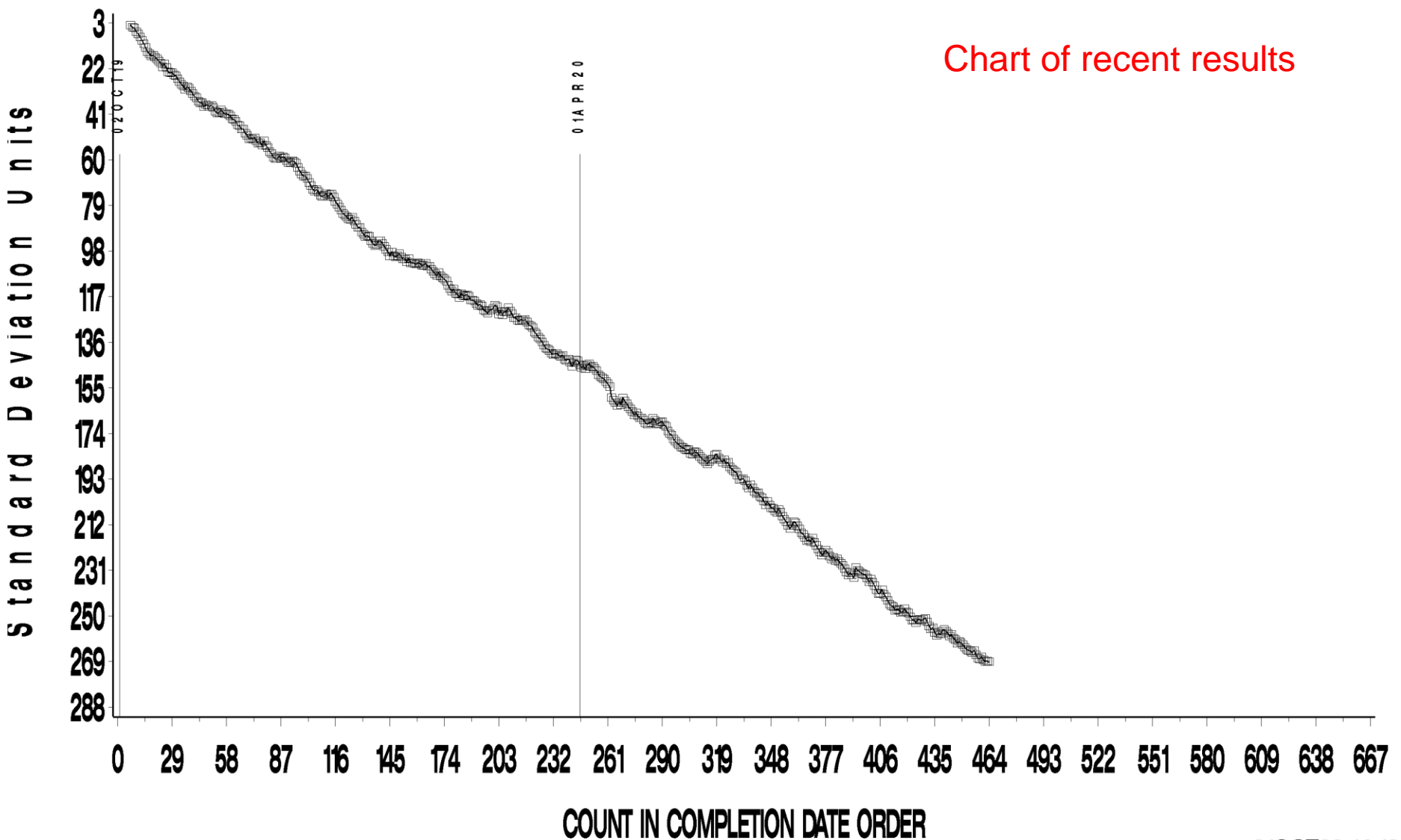


EOWT INDUSTRY OPERATIONALLY VALID DATA
CFA 2% Water Treat Rate
20 — 25 ML CHANGE IN FLOWRATE AVG.



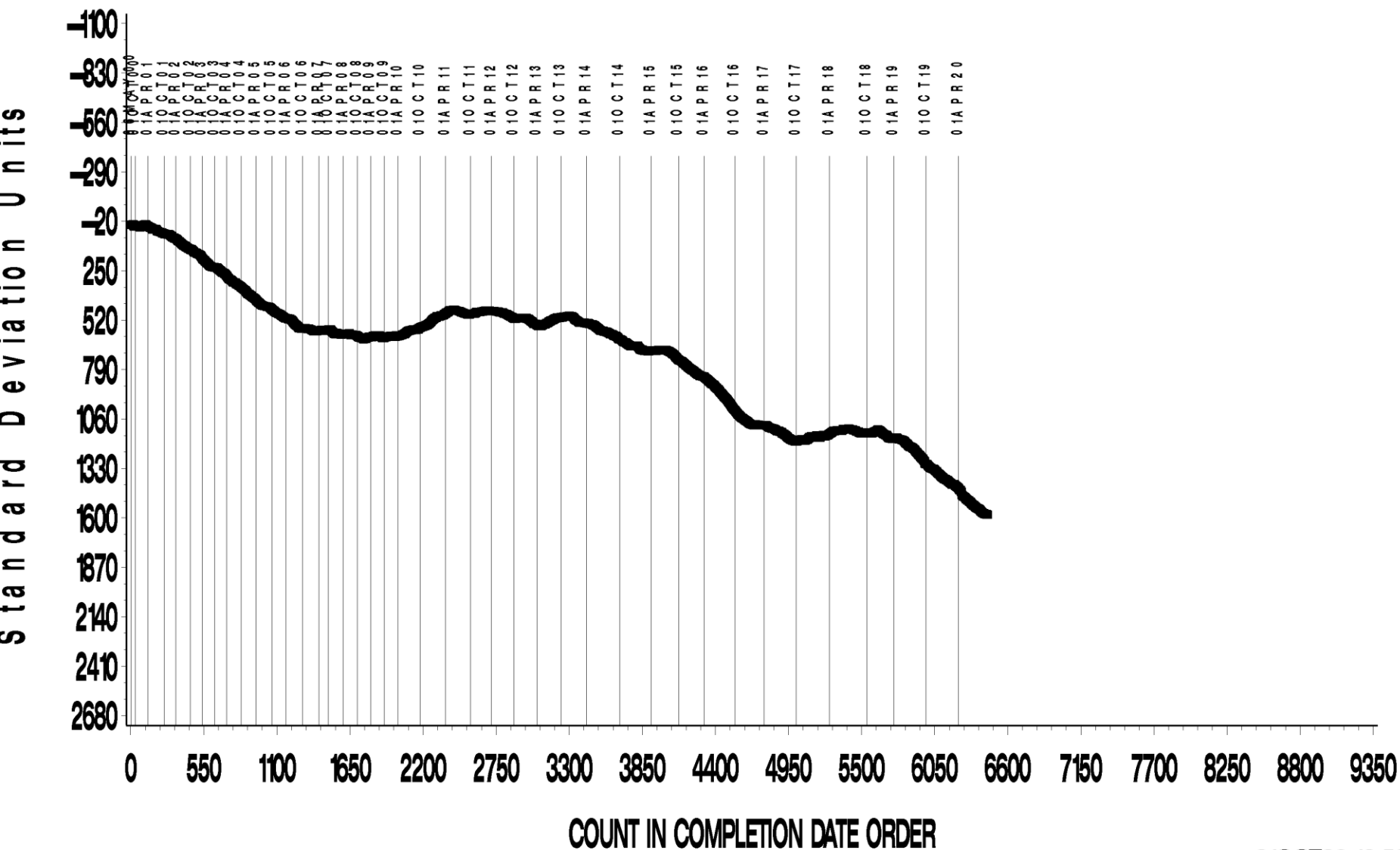
CUSUM Severity Analysis

Chart of recent results



CUSUM Severity Analysis

Historical Chart

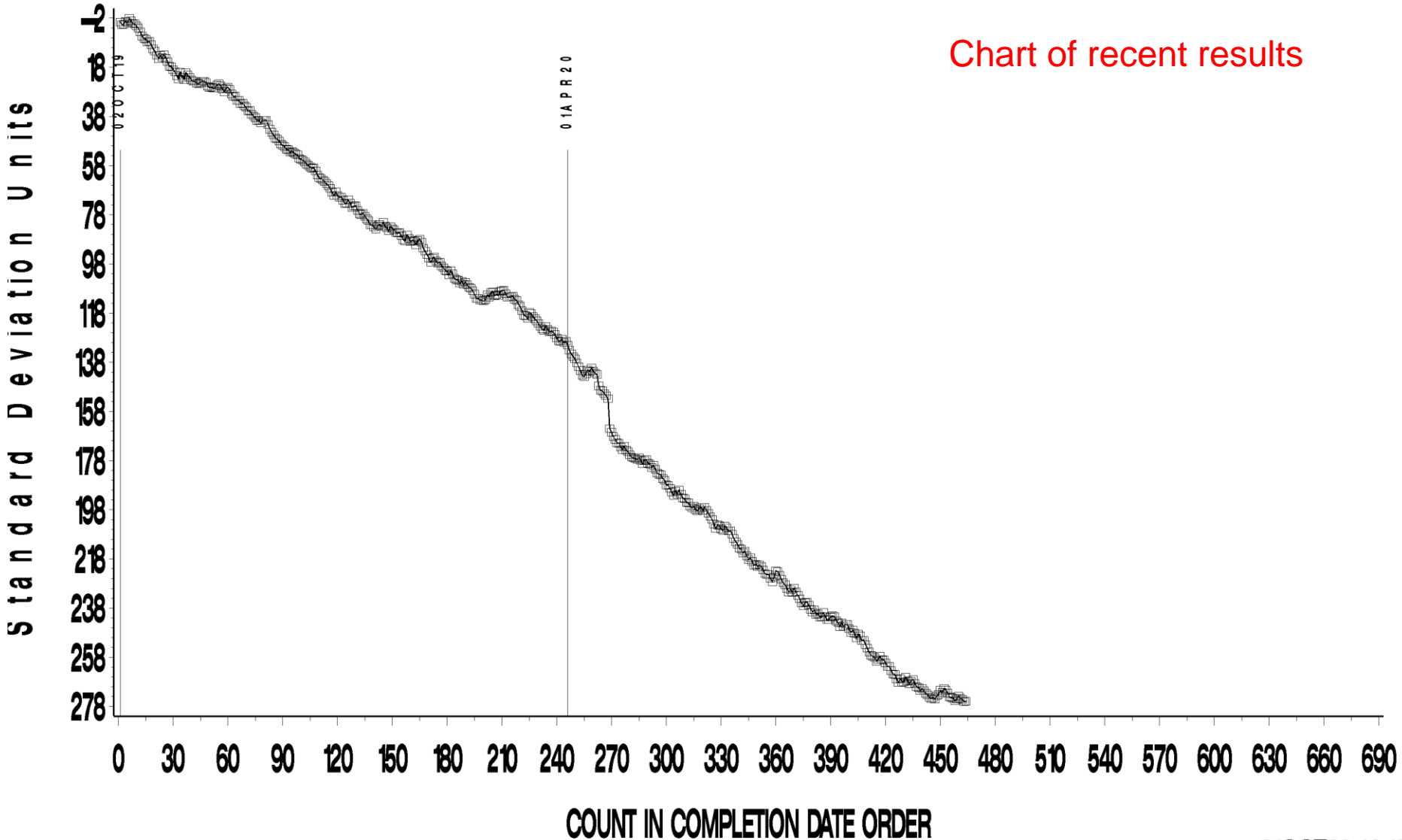


EOWT INDUSTRY OPERATIONALLY VALID DATA
CFA 3% Water Treat Rate
20 —25 ML CHANGE IN FLOWRATE AVG.



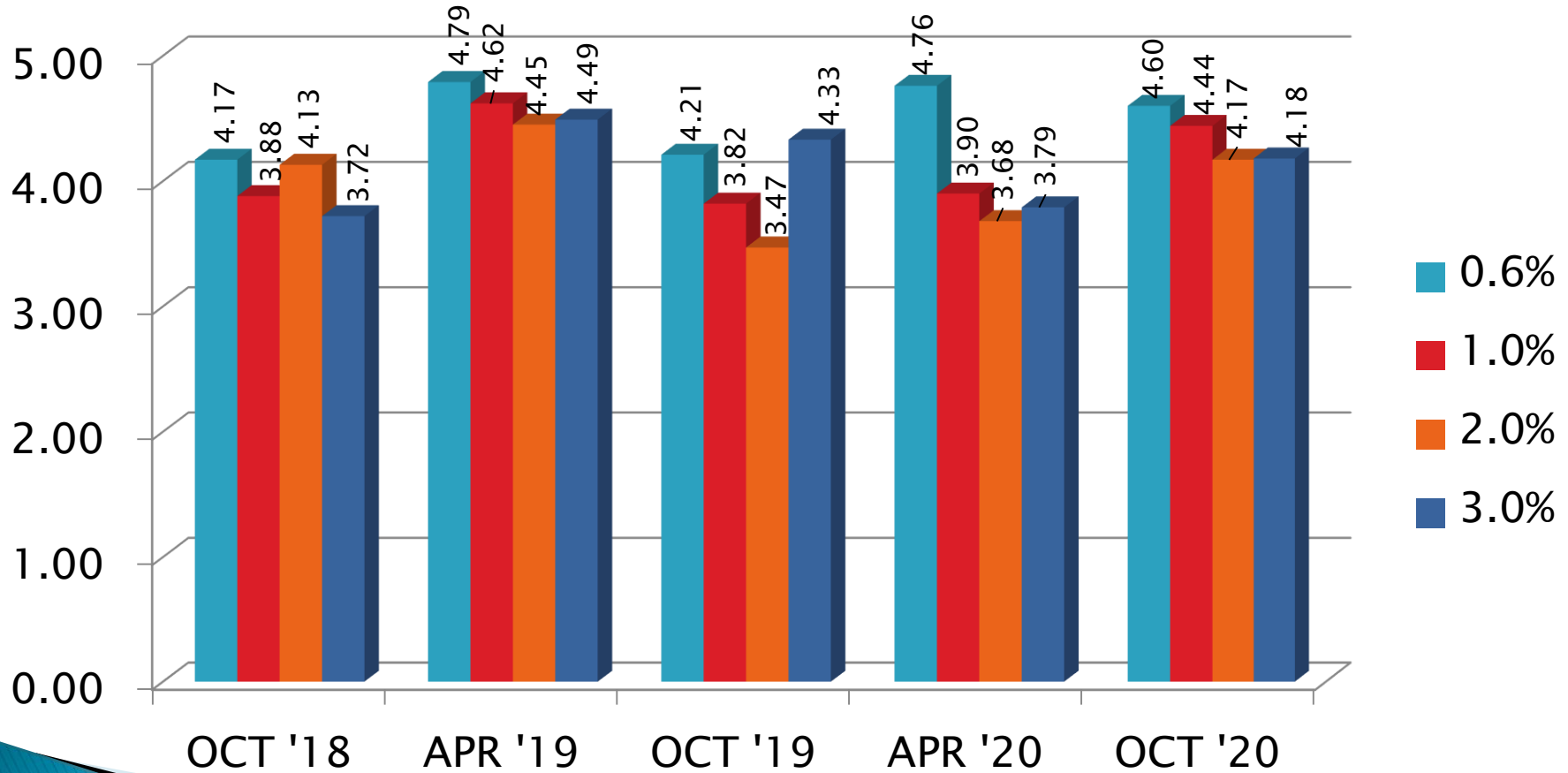
CUSUM Severity Analysis

Chart of recent results



EOWT Precision Estimates

CFA



Test Monitoring Center

<http://astmtmc.cmu.edu>



A Program of ASTM International

Information Letters*

Test	Date	IL	Topic
			No new information letters this period.

*Available from TMC Website

Reference Oil Inventory Estimated Life

Oil	TMC Inventory (gallons)	Quantity Shipped in last 6 months (gallons)	Lab Inventory (samples)	Estimated Life
77-3	604.4	20.6	184	5+ years
79	435.4	33.5	186	3.5 years

Miscellaneous Information

- ▶ Available on TMC Website:
 - Oil Assignment Request and Test File Upload
 - Live Reference Test Data Bases
 - Surveillance Panel Meeting Minutes
- ▶ www.astmtmc.cmu.edu



A Program of ASTM International