



# Test Monitoring Center

6555 Penn Avenue  
Pittsburgh, PA 15206-4489  
(412) 365-1000

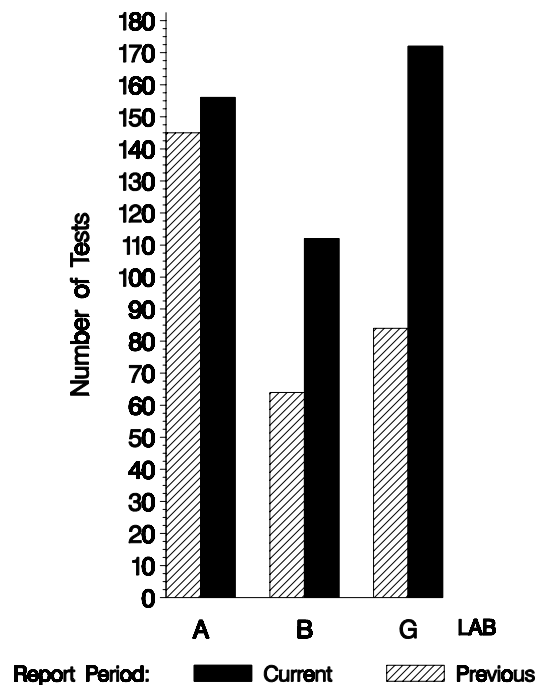
MEMORANDUM: 08-042  
DATE: May 30, 2008  
TO: Becky Grinfield,  
Chairman, Engine Oil Water Tolerance Surveillance Panel  
FROM: Scott Parke  
SUBJECT: EOWT Testing from October 1, 2007 through March 31, 2008

A total of 440 EOWT tests were reported to the Test Monitoring Center during the period from October 1, 2007 through March 31, 2008. Following is a summary of testing activity this period.

	Reporting Data
Number of Labs	3

Tests reported this period were distributed as shown below:

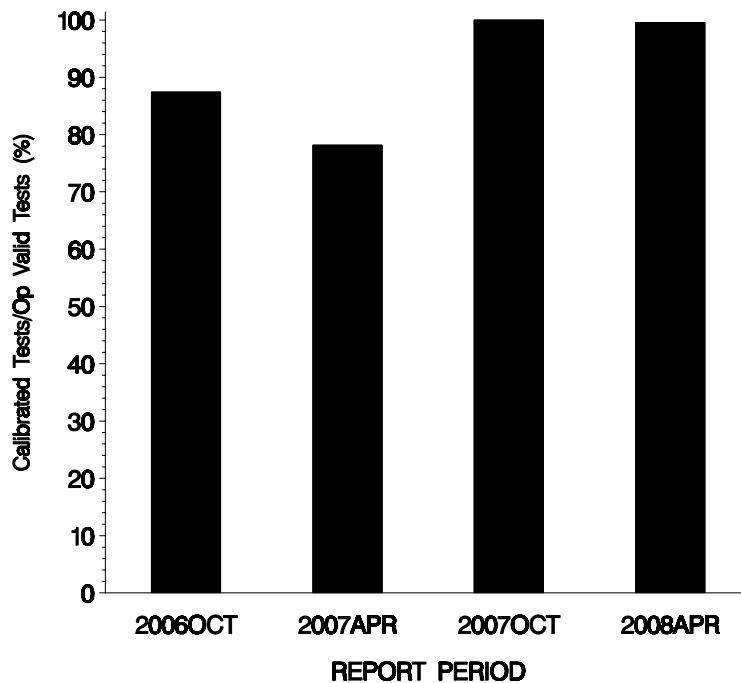
## NUMBER OF TESTS REPORTED BY LAB AND REPORT PERIOD



**Test Distribution by Oil, Treat Level and Validity**

		By Oil				By Treat Level				Totals	
		77	77-1	78	78-1	0.6	1.0	2.0	3.0	Last Period	This Period
Accepted for Calibration	AC	205	12	0	221	110	109	110	109	293	438
Accepted for Target Generation	AG	0	0	0	0	0	0	0	0	0	0
Rejected Mild	OC	1	0	0	1	1	0	0	1	0	2
Rejected Severe	OC	0	0	0	0	0	0	0	0	0	0
Operationally Invalid (lab)	LC	0	0	0	0	0	0	0	0	0	0
Operationally Invalid (lab/TMC)	RC	0	0	0	0	0	0	0	0	0	0
Aborted Calibration	XC	0	0	0	0	0	0	0	0	0	0
<b>Total</b>		<b>206</b>	<b>12</b>	<b>0</b>	<b>222</b>	<b>111</b>	<b>109</b>	<b>110</b>	<b>110</b>	<b>293</b>	<b>440</b>

**OPERATIONALLY VALID TESTS  
MEETING ACCEPTANCE CRITERIA**



The above chart shows the percentage of accepted operationally valid tests. The April, 2007 period shows less than 100% because of the 128 operationally valid tests that were used to generate data on a new filter paper batch but were not used for calibration.

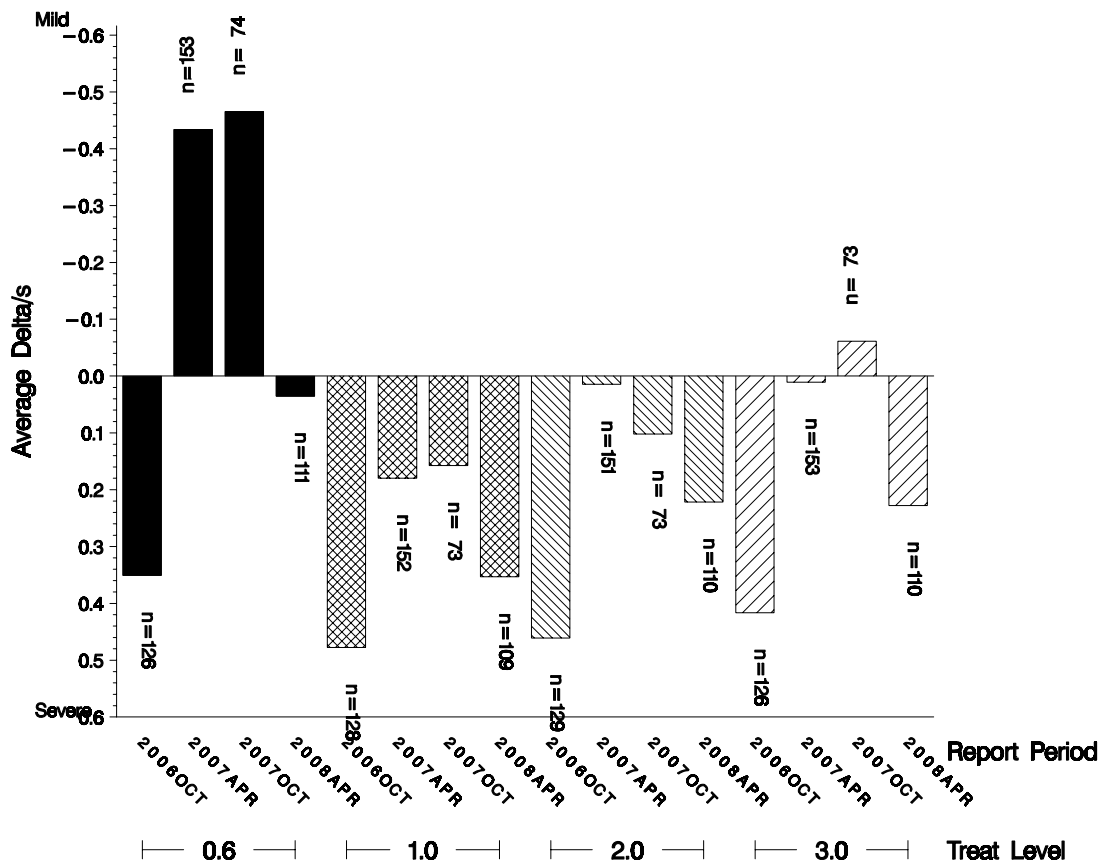
Causes for Lost Tests

Lab	Cause	Oil				Validity			Loss Rate		
		77	77-1	78	78-1	LC	RC	XC	Lost	Starts	%
	No tests were lost this period.								0	440	0%
		0	0	0	0	0	0	0			
	Starts	206	12	0	222	440	440	440			
	%	0%	0%	0%	0%	0%	0%	0%			

Average  $\Delta$ /s by Lab and Treat Level

Treat Level	Lab	n	CFAYI
0.6	A	40	-0.340
	B	28	-0.521
	G	43	0.746
	Industry	111	0.035
1.0	A	38	0.144
	B	28	0.216
	G	43	0.627
	Industry	109	0.353
2.0	A	39	-0.165
	B	28	-0.080
	G	43	0.768
	Industry	110	0.222
3.0	A	39	-0.174
	B	28	-0.062
	G	43	0.780
	Industry	110	0.228

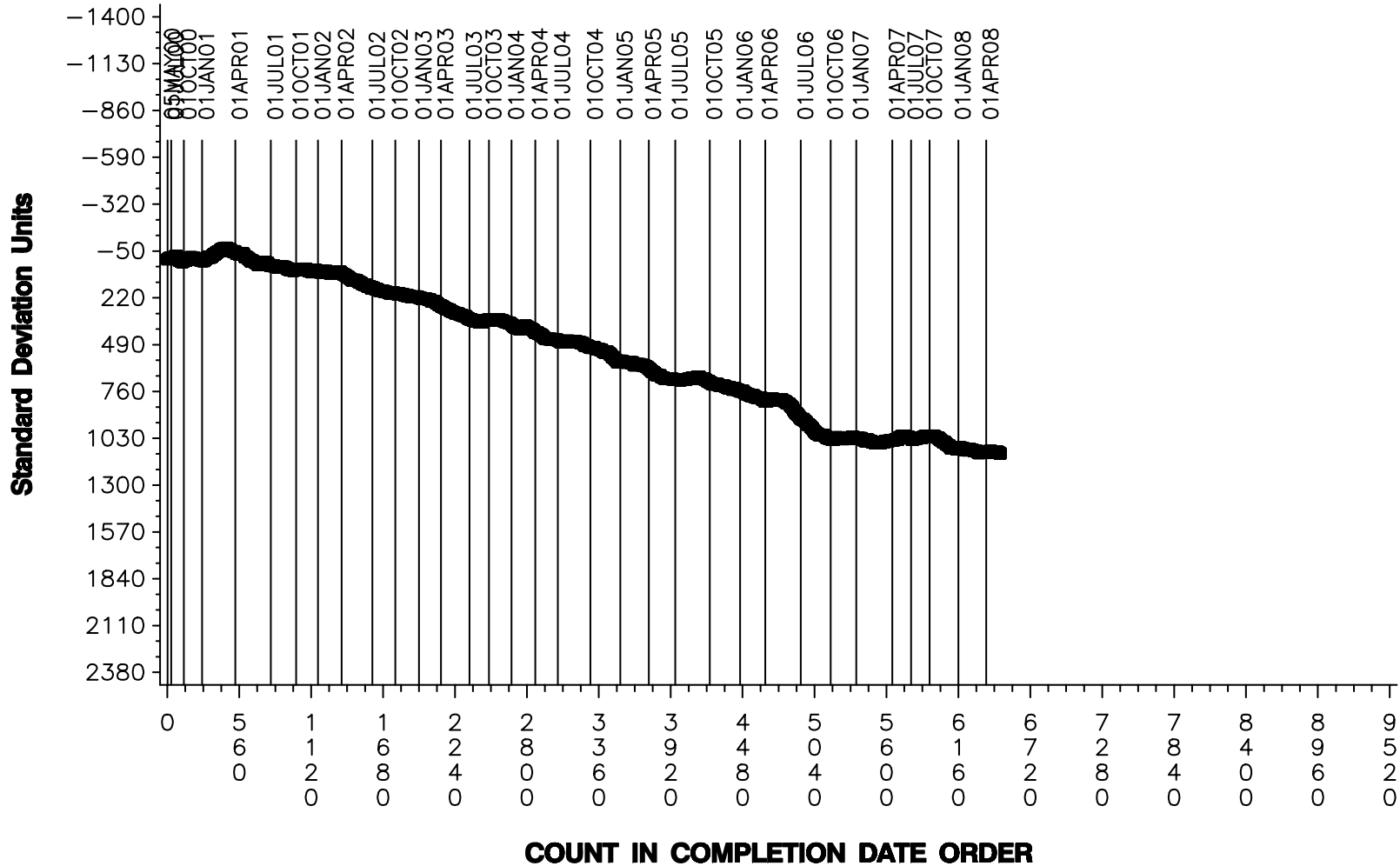
**AVERAGE DELTA/S**



# EOWT INDUSTRY OPERATIONALLY VALID DATA

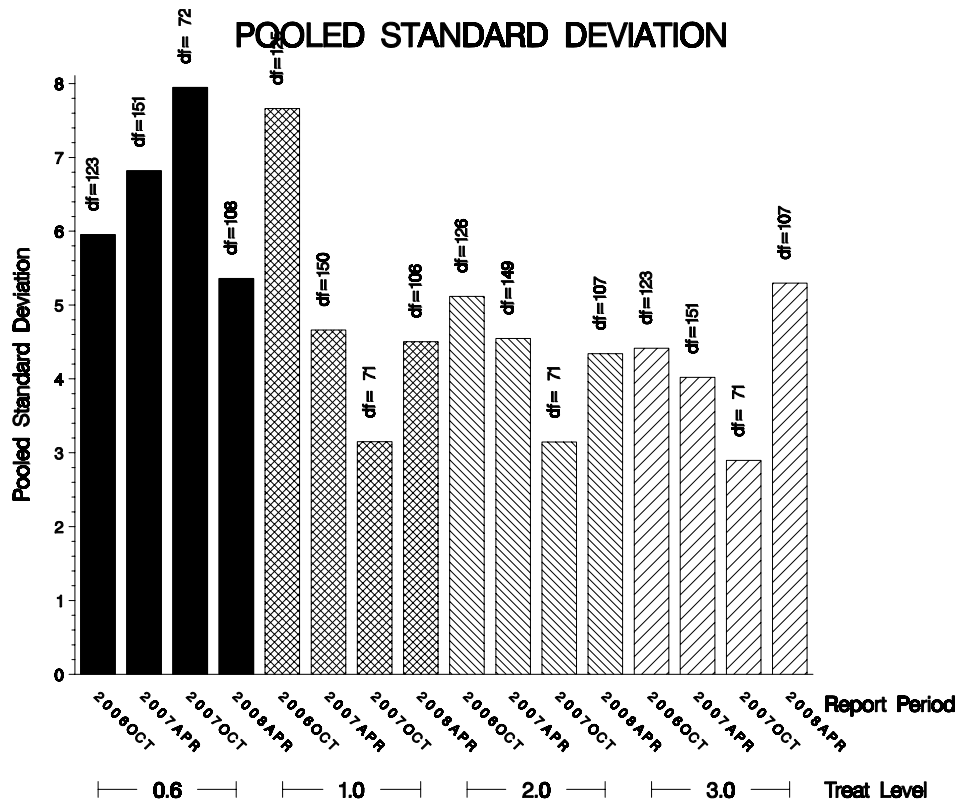
## TEST RUN 20 – 25 ML CHANGE IN FLOWRATE AVERAGE

### CUSUM Severity Analysis



POOLED S:

Shown below are bar charts comparing the pooled s values for the EOWT test parameters over the last four report periods. Where degrees of freedom equal zero, no bars are shown. This will occur where only one test was reported or where multiple tests are reported but all are on different oils. Periods showing no information had no tests reported.



STATUS OF REFERENCE OIL SUPPLY:

At the end of this report period, the testing oil supply stood as outlined in the following table:

Oil	Cans @ Labs	@ TMC	
		Cans	Gallons
77	7	39	3.1
77-1	82	3461	266.6
78-1	70	2096	161.4
Total	159	5596	431.0

\* Future reblends of oils marked with an asterisk are not obtainable by TMC.

Be aware that this table presumes that all of each of these oils is dedicated to the EOWT test area. This is not the case; oil 78-1 is also used in the EOFT test.

INFORMATION LETTERS:

No information letters were issued during this report period.

SUMMARY

- Over the course of this report period, CFA severity as measured by cusum plotting remained on target.
- Precision as measured by pooled standard deviation is comparable to previous periods.

SDP/sdp/astm0408.doc/mem08-042.sdp.doc

c: J. L. Zalar

F. M. Farber

M. T. Kasimirsky

EOWT Surveillance Panel

<ftp://ftp.astmtmc.cmu.edu/docs/bench/eowt/semiannualreports/eowt-04-2008.pdf>

Distribution: email