



Test Monitoring Center

Carnegie Mellon University
6555 Penn Avenue, Pittsburgh, PA 15206, USA

<http://astmtmc.cmu.edu>
412-365-1000

MEMORANDUM: 11-047

DATE: November 8, 2011

TO: Becky Grinfield,
Chairman, Engine Oil Filterability Test Surveillance Panel

FROM: Michael T. Kasimirsky *Michael T. Kasimirsky*

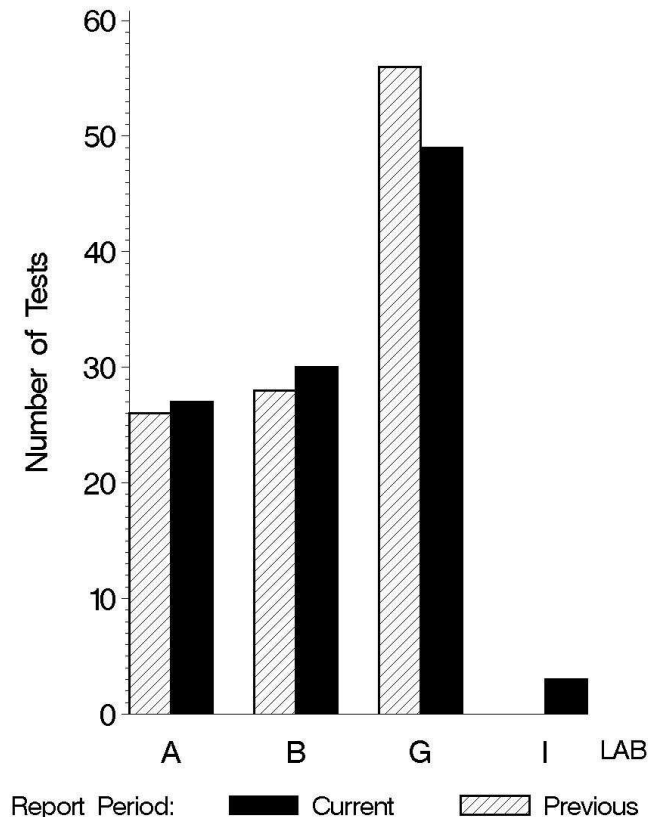
SUBJECT: EOFT Testing from April 1, 2011 through September 30, 2011

A total of 109 EOFT tests were reported to the Test Monitoring Center during the period from April 1, 2011 through September 30, 2011. Following is a summary of testing activity this period.

| | |
|----------------|----------------|
| | Reporting Data |
| Number of Labs | 4 |

Tests reported this period were distributed as shown below:

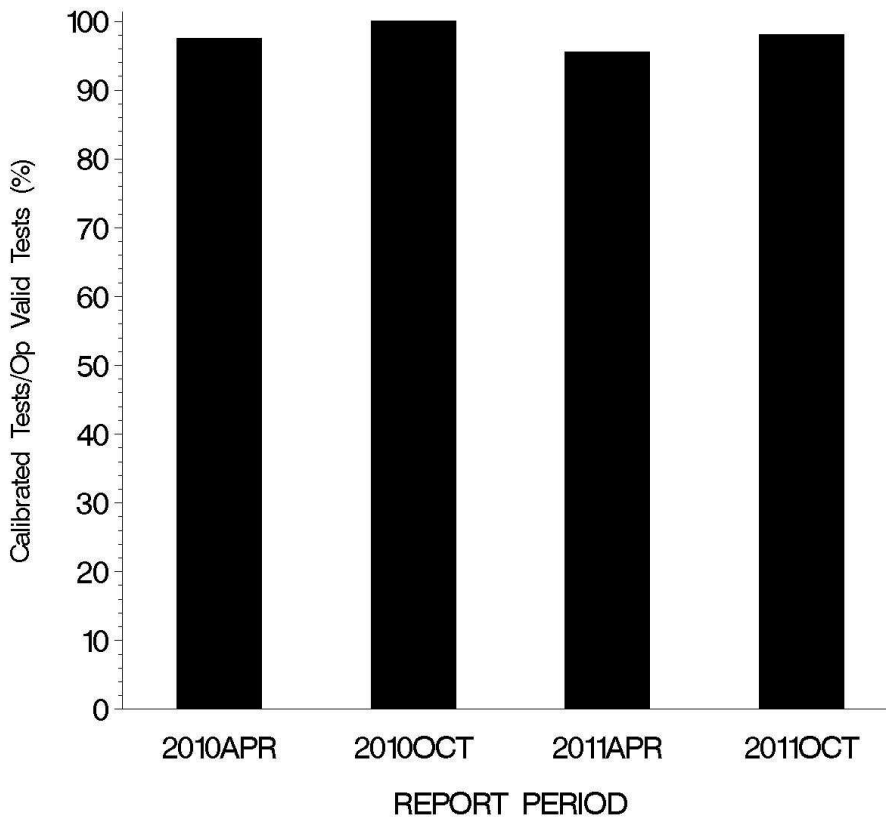
NUMBER OF TESTS REPORTED BY LAB AND REPORT PERIOD



Test Distribution by Oil and Validity

| | | | | Totals | |
|---------------------------------|----|-----------|-----------|-------------|-------------|
| | | | | This Period | Last Period |
| | | 78-1 | 78-2 | | |
| Accepted for Calibration | AC | 61 | 36 | 97 | 104 |
| Accepted for Target Generation | AG | 0 | 9 | 9 | 0 |
| Rejected Mild | OC | 2 | 0 | 2 | 5 |
| Rejected Severe | OC | 0 | 0 | 0 | 0 |
| Operationally Invalid (lab) | LC | 0 | 0 | 0 | 0 |
| Operationally Invalid (lab/TMC) | RC | 0 | 0 | 0 | 0 |
| Aborted Calibration | XC | 1 | 0 | 1 | 1 |
| Total | | 64 | 45 | 109 | 110 |

**OPERATIONALLY VALID TESTS
MEETING ACCEPTANCE CRITERIA**



The above chart shows the percentage of accepted operationally valid tests. Two tests failed this period.

CAUSES FOR LOST TESTS

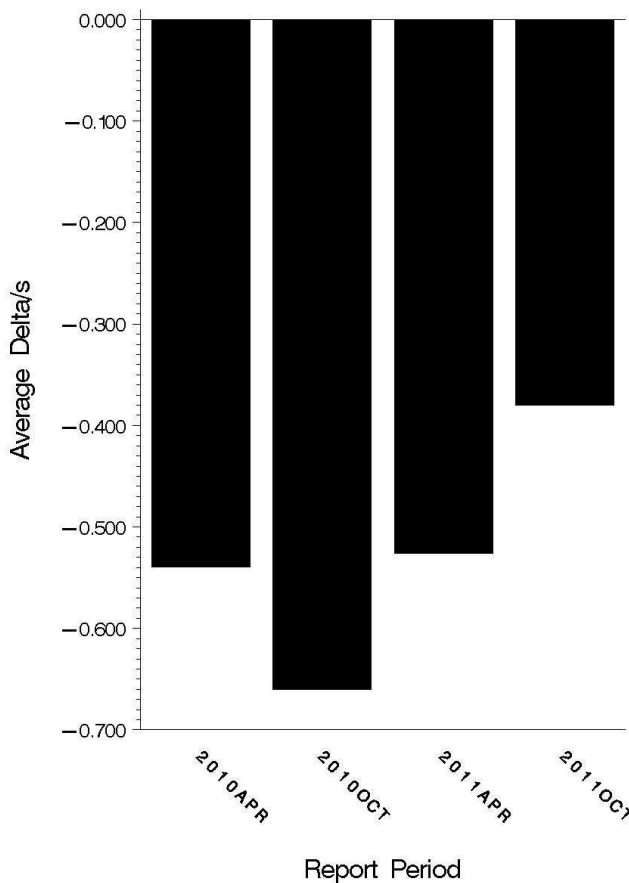
| Lab | Cause | Oil | | Validity | | | Loss Rate | | |
|-----|----------------|------|------|----------|-----|------|-----------|--------|------|
| | | 78-1 | 78-2 | LC | RC | XC | Lost | Starts | % |
| I | Broken Burette | ● | | | | ● | 1 | 109 | 0.9% |
| | Total Lost | 1 | 0 | 0 | 0 | 1 | | | |
| | Starts | 64 | 45 | 109 | 109 | 109 | | | |
| | % | 1.6% | 0% | 0% | 0% | 0.9% | | | |

AVERAGE Δ/s:

Average Δ/s by Lab

| Lab | n | CIFAYI |
|----------|-----|--------|
| A | 27 | -0.118 |
| B | 30 | -1.232 |
| G | 49 | 0.184 |
| I | 2 | -4.967 |
| Industry | 108 | -0.380 |

AVERAGE DELTA/S

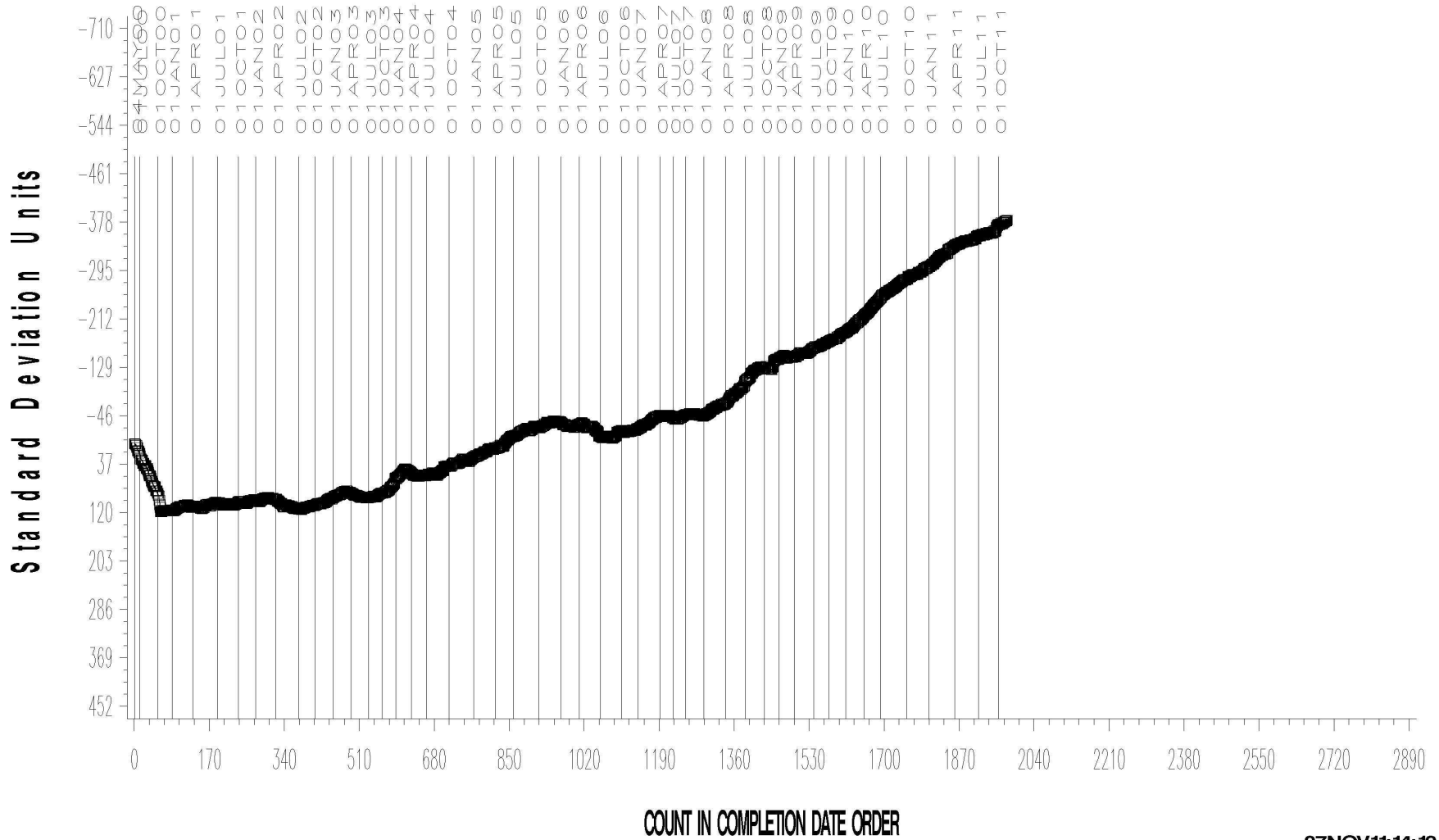


EOLT INDUSTRY OPERATIONALLY VALID DATA



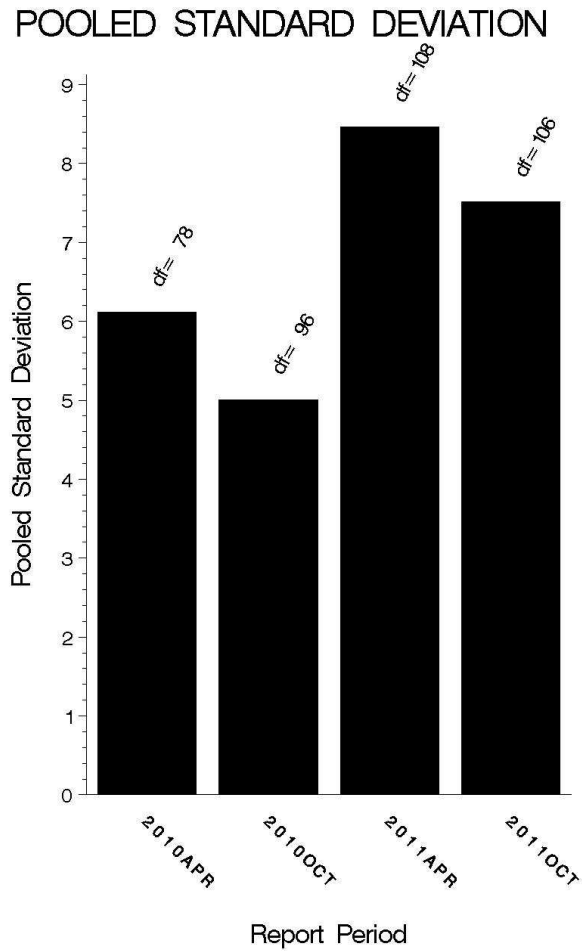
20 – 25 ML CHANGE IN FLOWRATE AVERAGE (%)

CUSUM Severity Analysis



POOLED S:

Pooled s this period was 7.50. Shown below are bar charts comparing the pooled s values for the EOFT test over the last four report periods.



STATUS OF REFERENCE OIL SUPPLY:

At the end of this report period, the testing oil supply stood as outlined in the following table:

| Oil | Cans @ Labs | @ TMC | |
|--------------|-------------|-------------|--------------|
| | | Cans | Gallons |
| 78-1 | 29 | 0 | 0 |
| 78-2 | 17 | 3176 | 244.6 |
| Total | 46 | 3176 | 244.6 |

Be aware that this table presumes that all of each of these oils at the TMC is dedicated to EOFT use. This is not the case, as oils 78-1 and 78-2 are also used in the EOWT test.

On the June 9, 2011, EOFT Surveillance Panel conference call, the panel approved a motion to introduce reference oil 78-2, based upon the nine data points presented on the call.

The initial test targets, which took effect on June 9, 2011, are shown in the following table:

| Reference Oil 78-2 Test Targets (N=9) | | | |
|--|----------------|----------|---------------------|
| Mean | Std Dev | K | Target Range |
| 44.26 | 7.13 | 1.96 | 30.28 to 58.23 |

Note that the upper and lower limits shown in the "Target Range" block are the official test targets for the EOWT test; the target mean and standard deviation are shown for information purposes only.

INFORMATION LETTERS:

No information letters were issued during this report period.

SUMMARY

- Over the course of this report period, CIFA severity as measured by cusum plotting was slightly mild overall.
- Precision as measured by pooled standard deviation has improved, compared to last period, and is more in line with past periods.

MTK/mtk/astm1011.doc/mem11-047.mtk.doc

c: F. M. Farber

J. A. Clark

EOFT Surveillance Panel

<ftp://ftp.astmtmc.cmu.edu/docs/bench/eoft/semiannualreports/eoft-10-2011.pdf>

Distribution: email