



Test Monitoring Center

Carnegie Mellon University
6555 Penn Avenue, Pittsburgh, PA 15206, USA

<http://astmtmc.cmu.edu>
412-365-1000

MEMORANDUM: 13-032

DATE: May 21, 2013

TO: Yong-Li McFarland,
Chairwoman, Engine Oil Filterability Test Surveillance Panel

FROM: Michael T. Kasimirsky *Michael T. Kasimirsky*

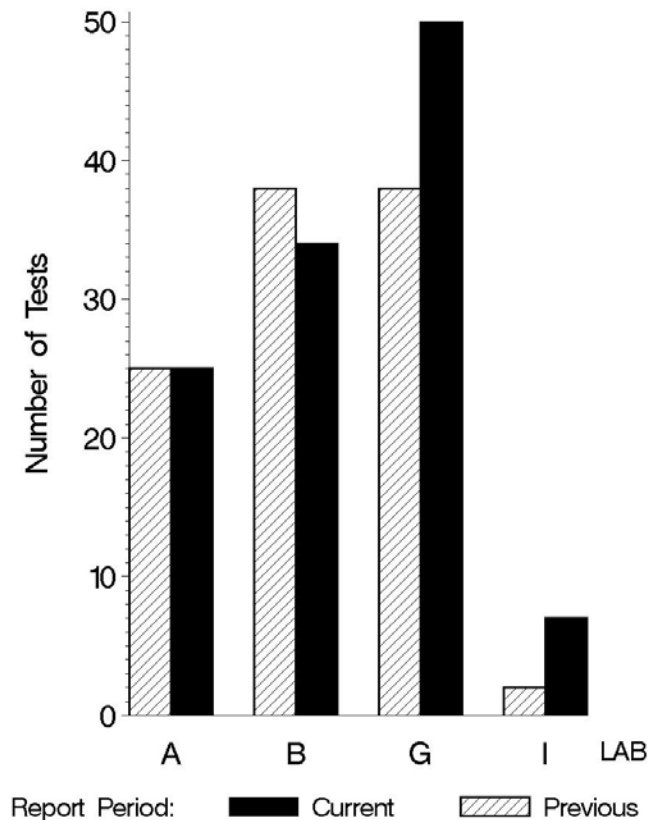
SUBJECT: EOFT Testing from October 1, 2012 through March 31, 2013

A total of 116 EOFT tests were reported to the Test Monitoring Center during the period from October 1, 2012 through March 31, 2013. Following is a summary of testing activity this period.

| | |
|----------------|----------------|
| | Reporting Data |
| Number of Labs | 4 |

Tests reported this period were distributed as shown below:

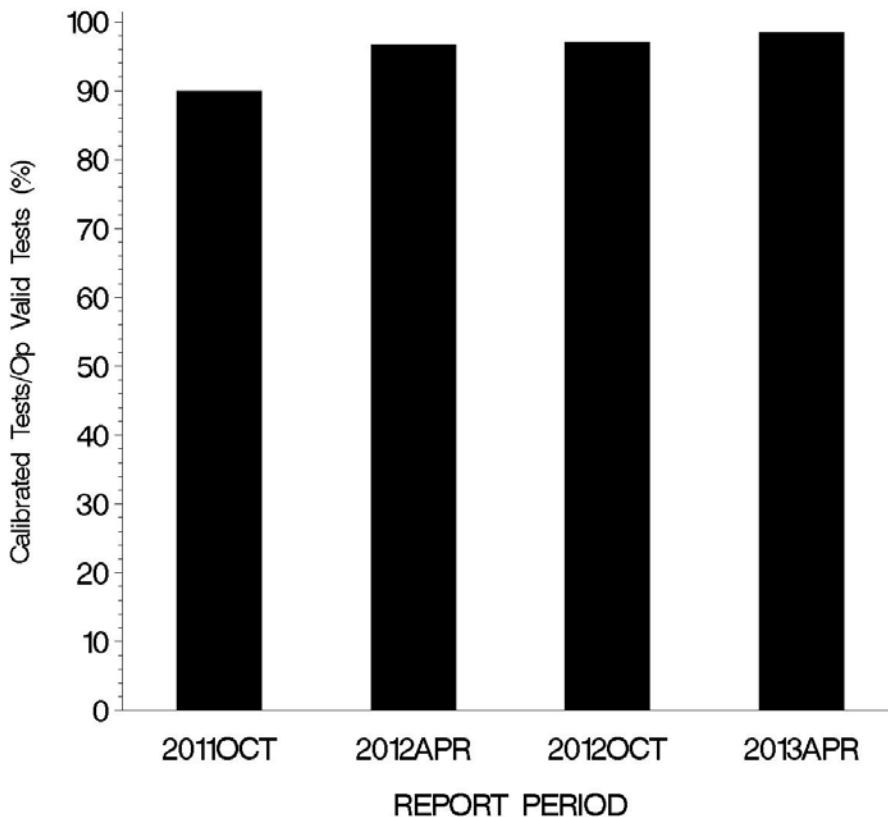
NUMBER OF TESTS REPORTED BY LAB AND REPORT PERIOD



Test Distribution by Oil and Validity

| | | | | | Totals | |
|---------------------------------|----|----------|----------|------------|-------------|-------------|
| | | 78 | 78-1 | 78-2 | This Period | Last Period |
| Accepted for Calibration | AC | 0 | 7 | 107 | 114 | 97 |
| Accepted for Target Generation | AG | 0 | 0 | 0 | 0 | 0 |
| Failed Acceptance Criteria | OC | 0 | 0 | 2 | 2 | 3 |
| Operationally Invalid (lab) | LC | 0 | 0 | 0 | 0 | 0 |
| Operationally Invalid (lab/TMC) | RC | 0 | 0 | 0 | 0 | 0 |
| Aborted Calibration | XC | 0 | 0 | 2 | 0 | 2 |
| Total | | 0 | 7 | 109 | 116 | 102 |

**OPERATIONALLY VALID TESTS
MEETING ACCEPTANCE CRITERIA**



The above chart shows the percentage of accepted operationally valid tests. Two tests failed this period, both severe.

CAUSES FOR LOST TESTS

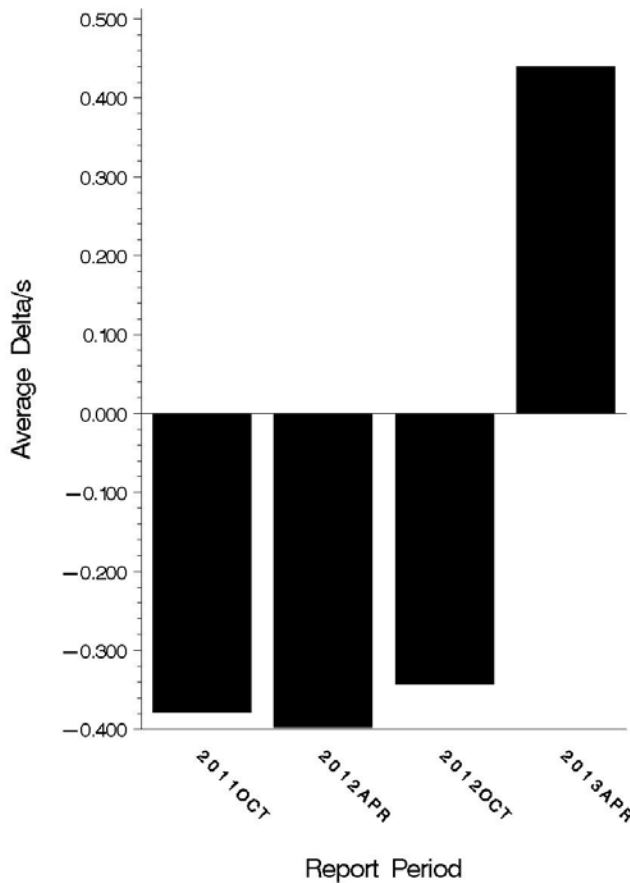
| Lab | Cause | Oil | | | Validity | | | Loss Rate | | |
|-----|---------------|-----|------|------|----------|-----|-----|-----------|--------|---|
| | | 78 | 78-1 | 78-2 | LC | RC | XC | Lost | Starts | % |
| - | No lost tests | | | | | | | 0 | 116 | 0 |
| | Total Lost | 0 | 0 | 0 | 0 | 0 | 0 | | | |
| | Starts | 0 | 7 | 109 | 116 | 116 | 116 | | | |
| | % | 0 | 0 | 0 | 0 | 0 | 0 | | | |

AVERAGE Δ/s:

Average Δ/s by Lab

| Lab | n | CIFAYI |
|----------|-----|--------|
| A | 25 | 0.312 |
| B | 34 | 0.681 |
| G | 50 | 0.586 |
| I | 7 | -1.340 |
| Industry | 116 | 0.438 |

AVERAGE DELTA/S

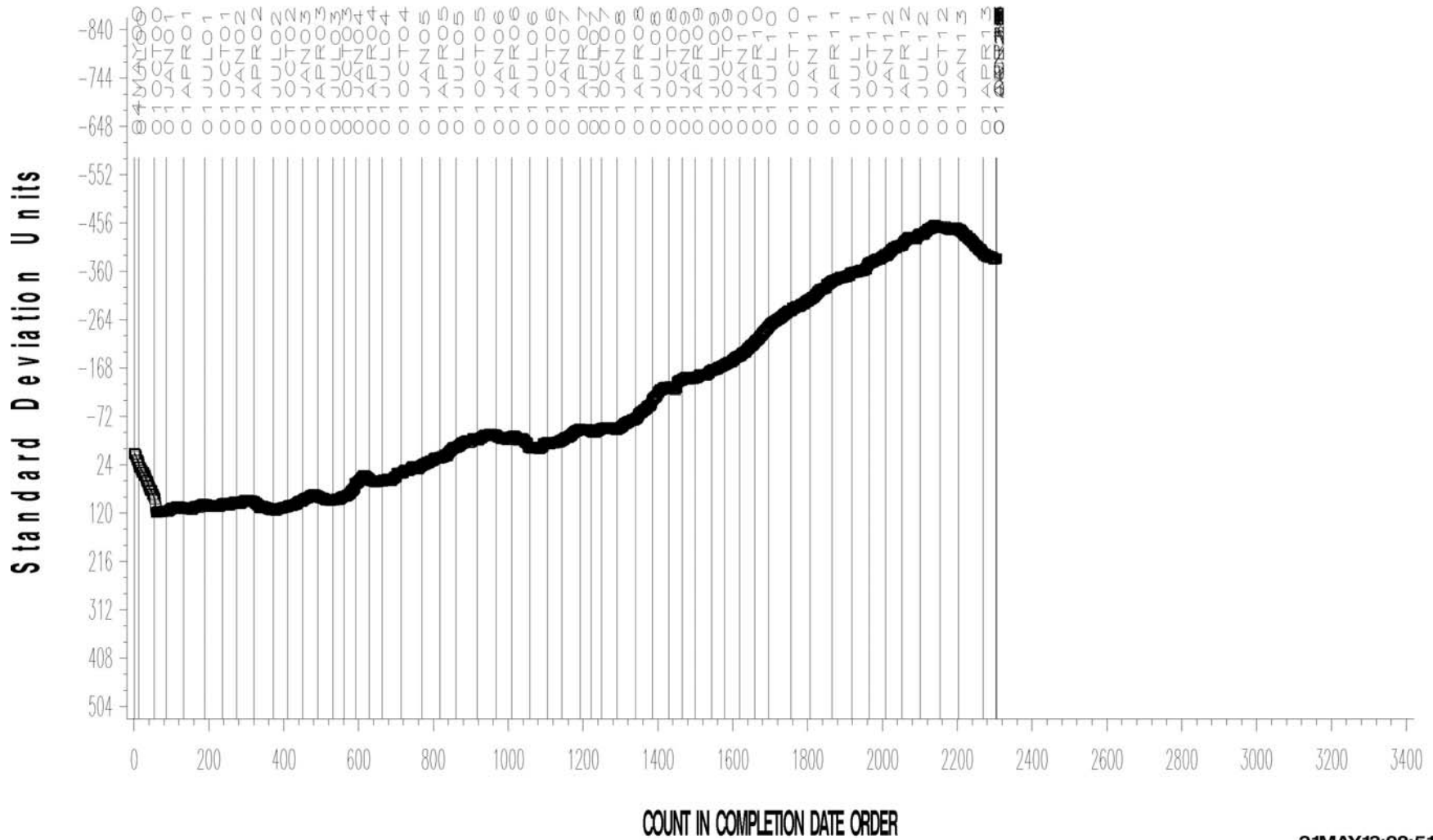


EOLT INDUSTRY OPERATIONALLY VALID DATA



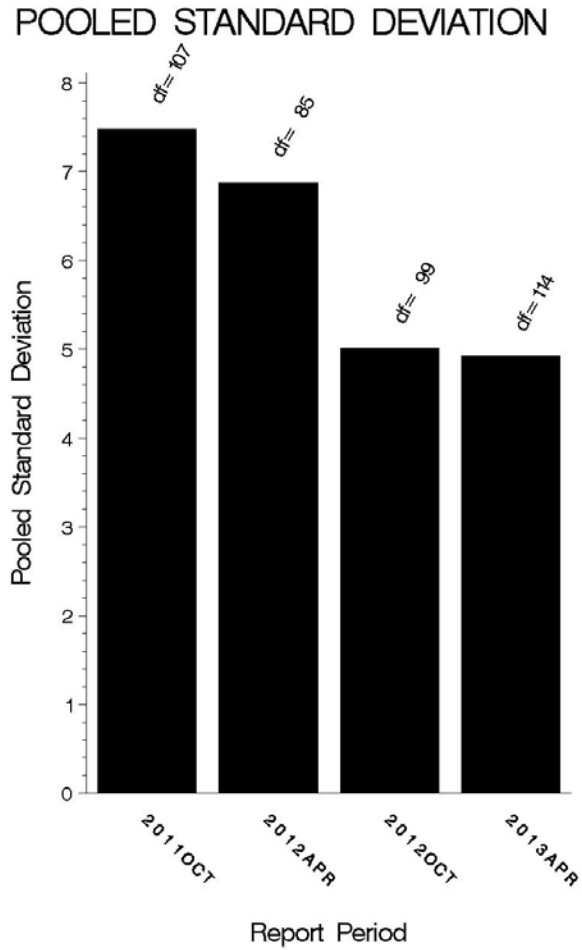
20 – 25 ML CHANGE IN FLOWRATE AVERAGE (%)

CUSUM Severity Analysis



POOLED S:

Pooled s this period was 4.92. Shown below are bar charts comparing the pooled s values for the EOFT test over the last four report periods.



STATUS OF REFERENCE OIL SUPPLY:

At the end of this report period, the testing oil supply stood as outlined in the following table:

| Oil | Cans @ Labs | @ TMC | |
|-------|-------------|-------|---------|
| | | Cans | Gallons |
| 78-1 | 0 | 0 | 0 |
| 78-2 | 106 | 1864 | 143.6 |
| Total | 106 | 1864 | 143.6 |

Be aware that this table presumes that all of each of these oils at the TMC is dedicated to EOFT use. This is not the case, as oils 78-1 and 78-2 are also used in the EOWT test.

INFORMATION LETTERS:

No information letters were issued during this report period.

SUMMARY

- Over the course of this report period, CIFA severity, as measured by cusum plotting, was severe overall for the period, reversing the mild trend that has existed for several years in the test.
- Precision as measured by pooled standard deviation has improved slightly, compared to last period, and is currently at its lowest level in recent history.

MTK/mtk/astm0413.doc/mem13-032.mtk.doc

c: F. M. Farber

J. A. Clark

EOFT Surveillance Panel

<ftp://ftp.astmtmc.cmu.edu/docs/bench/eoft/semiannualreports/eoft-04-2013.pdf>

Distribution: email