



Test Monitoring Center

Carnegie Mellon University
6555 Penn Avenue, Pittsburgh, PA 15206, USA

<http://astmtmc.cmu.edu>
412-365-1000

MEMORANDUM: 12-018

DATE: May 22, 2012

TO: Becky Grinfield,
Chairman, Engine Oil Filterability Test Surveillance Panel

FROM: Michael T. Kasimirsky *Michael T. Kasimirsky*

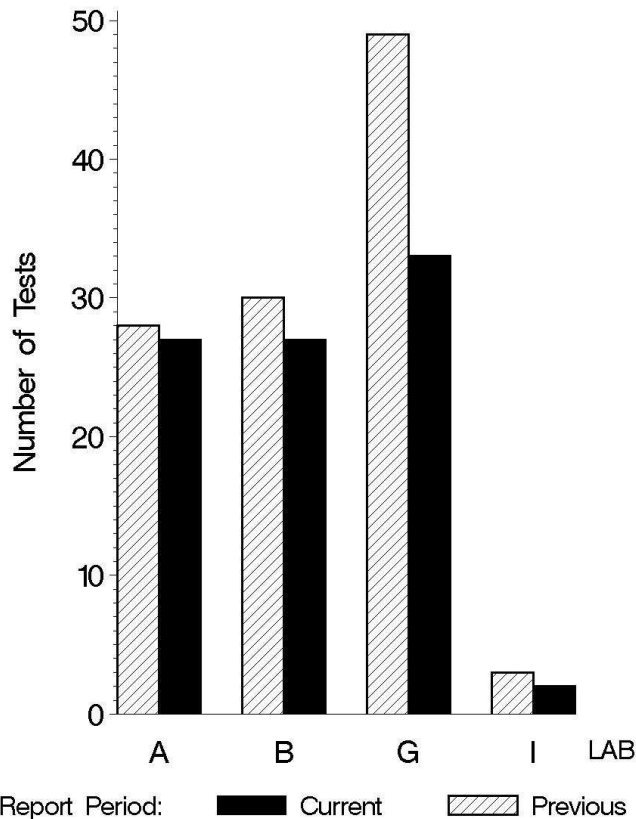
SUBJECT: EOFT Testing from October 1, 2011 through March 31, 2012

A total of 89 EOFT tests were reported to the Test Monitoring Center during the period from October 1, 2011 through March 31, 2012. Following is a summary of testing activity this period.

	Reporting Data
Number of Labs	4

Tests reported this period were distributed as shown below:

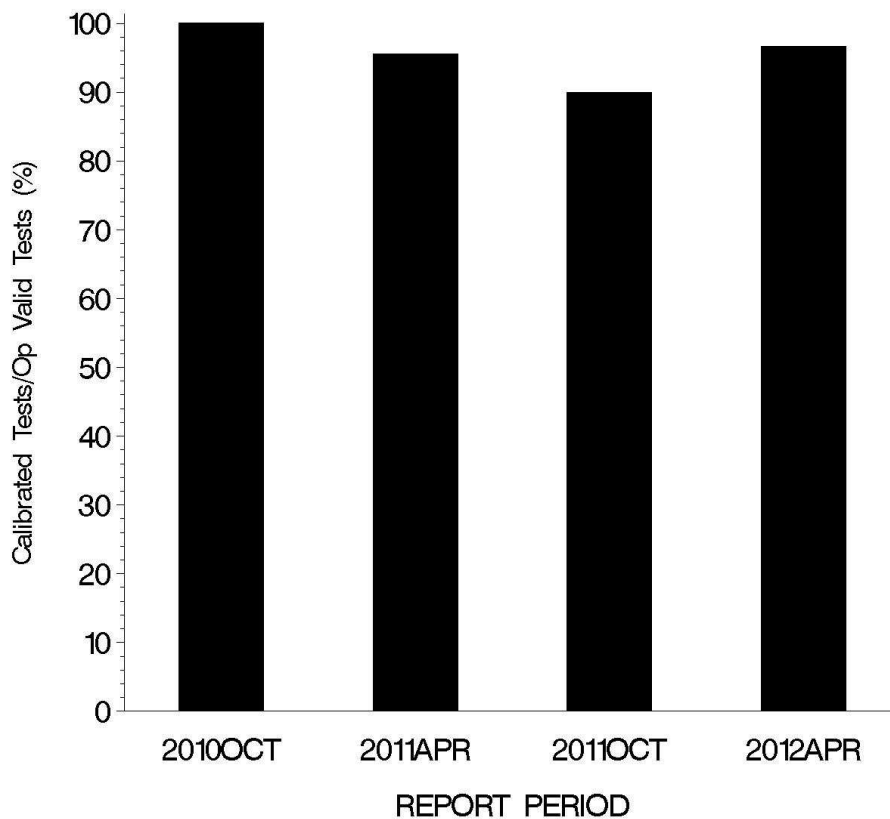
NUMBER OF TESTS REPORTED BY LAB AND REPORT PERIOD



Test Distribution by Oil and Validity

					Totals	
		78	78-1	78-2	This Period	Last Period
Accepted for Calibration	AC	1	17	67	85	97
Accepted for Target Generation	AG	0	0	0	0	9
Failed Acceptance Criteria	OC	0	1	2	3	2
Operationally Invalid (lab)	LC	0	0	0	0	0
Operationally Invalid (lab/TMC)	RC	0	0	0	0	0
Aborted Calibration	XC	0	1	0	1	1
Total		1	19	69	89	109

**OPERATIONALLY VALID TESTS
MEETING ACCEPTANCE CRITERIA**



The above chart shows the percentage of accepted operationally valid tests. Three tests failed this period, two mild and one severe.

CAUSES FOR LOST TESTS

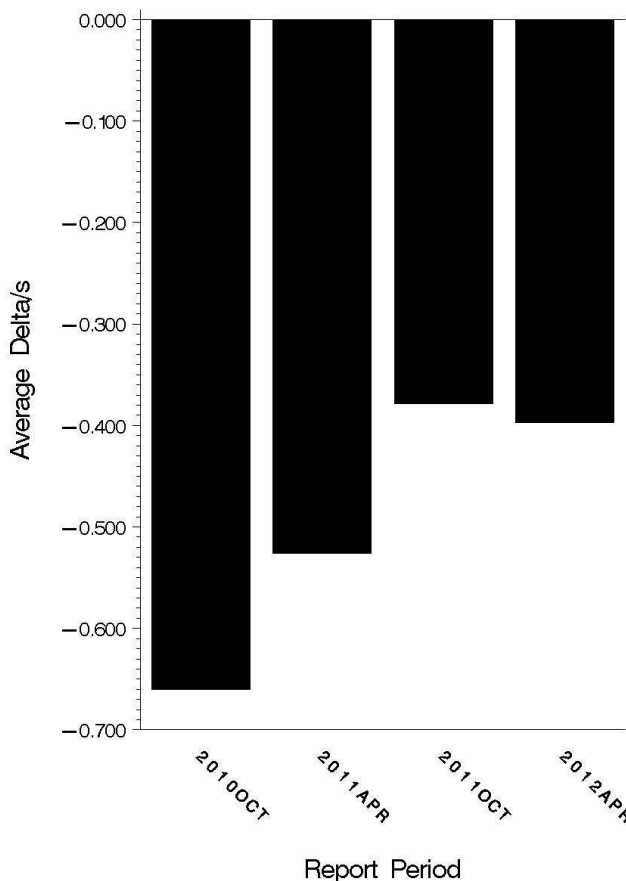
Lab	Cause	Oil			Validity			Loss Rate		
		78	78-1	78-2	LC	RC	XC	Lost	Starts	%
B	Sample Blend Error		●				●	1	89	1.1%
	Total Lost	0	1	0	0	0	1			
	Starts	1	19	69	89	89	89			
	%	0%	5.2%	0%	0%	0%	1.1%			

AVERAGE Δ/s:

Average Δ/s by Lab

Lab	n	CIFAYI
A	27	-0.453
B	26	-0.942
G	33	0.104
I	2	-0.797
Industry	88	-0.396

AVERAGE DELTA/S

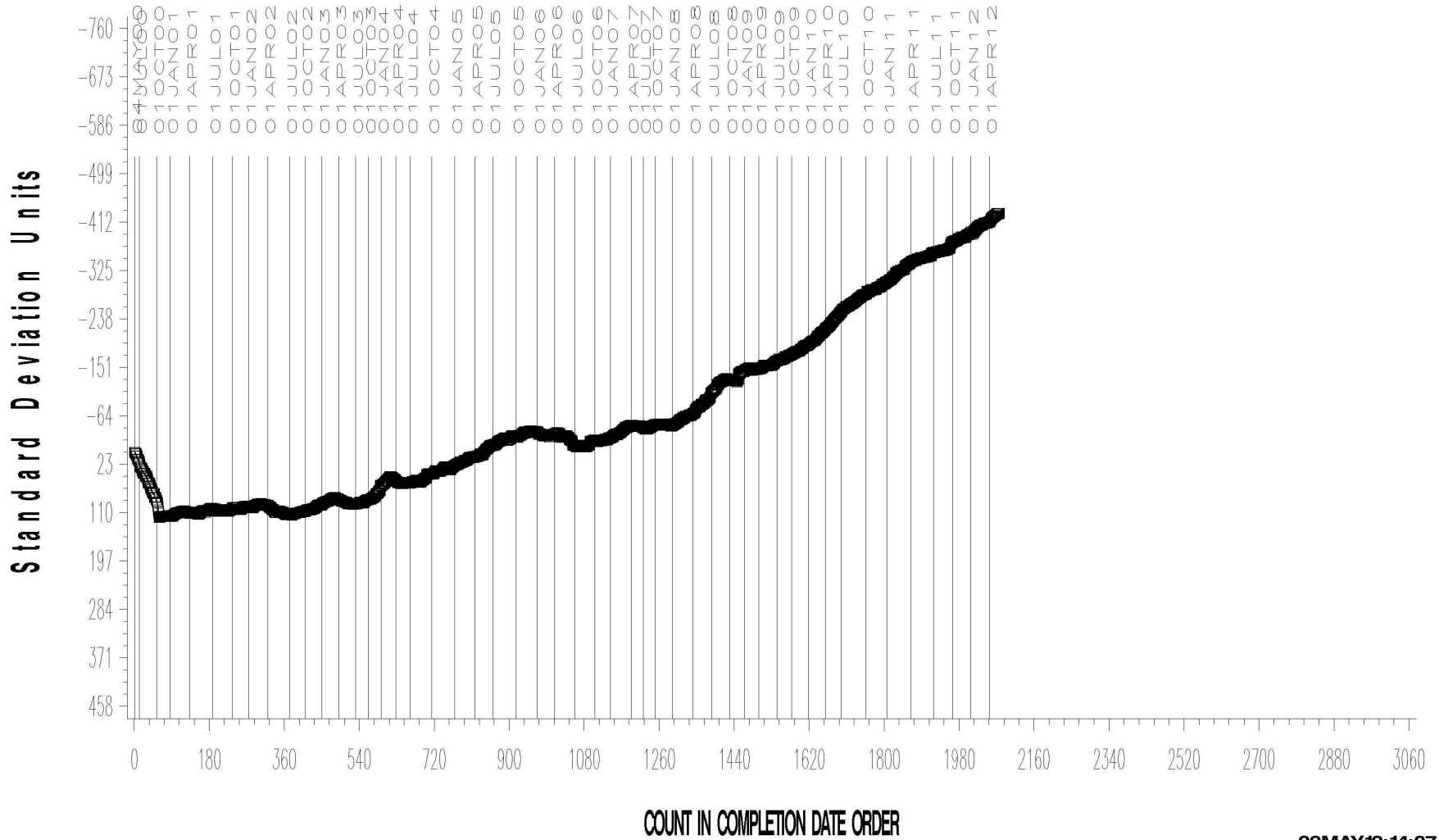


EOLT INDUSTRY OPERATIONALLY VALID DATA



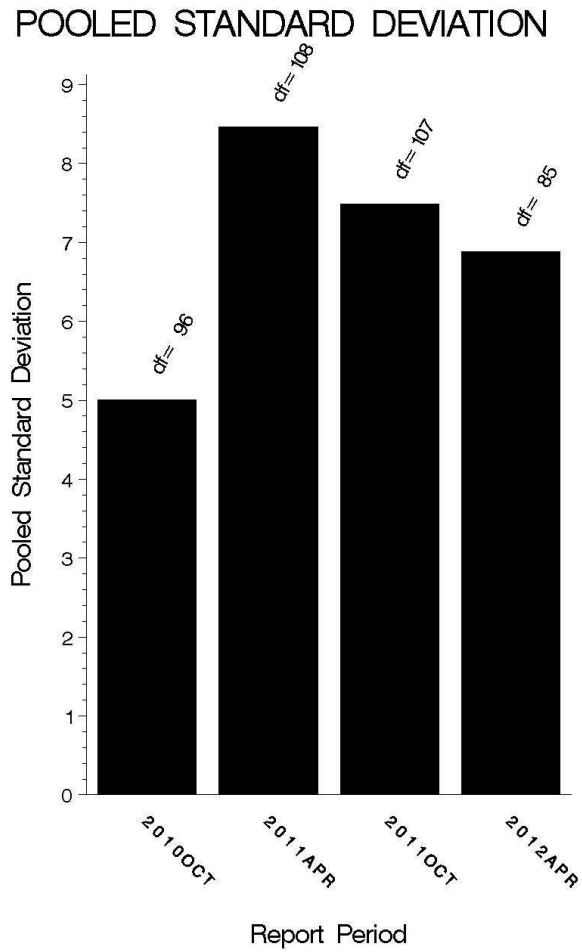
20 – 25 ML CHANGE IN FLOWRATE AVERAGE (%)

CUSUM Severity Analysis



POOLED S:

Pooled s this period was 6.87. Shown below are bar charts comparing the pooled s values for the EOFT test over the last four report periods.



STATUS OF REFERENCE OIL SUPPLY:

At the end of this report period, the testing oil supply stood as outlined in the following table:

Oil	Cans @ Labs	@ TMC	
		Cans	Gallons
78-1	0	0	0
78-2	73	2710	208.7
Total	73	2710	208.7

Be aware that this table presumes that all of each of these oils at the TMC is dedicated to EOFT use. This is not the case, as oils 78-1 and 78-2 are also used in the EOWT test.

INFORMATION LETTERS:

No information letters were issued during this report period.

SUMMARY

- Over the course of this report period, CIFA severity as measured by cusum plotting was slightly mild overall.
- Precision as measured by pooled standard deviation has improved, compared to last period, and is more in line with past periods.

MTK/mtk/astm0412.doc/mem12-018.mtk.doc

c: F. M. Farber

J. A. Clark

EOFT Surveillance Panel

<ftp://ftp.astmtmc.cmu.edu/docs/bench/eoft/semiannualreports/eoft-04-2012.pdf>

Distribution: email