



# Test Monitoring Center

Carnegie Mellon University  
6555 Penn Avenue, Pittsburgh, PA 15206, USA

<http://astmtmc.cmu.edu>  
412-365-1000

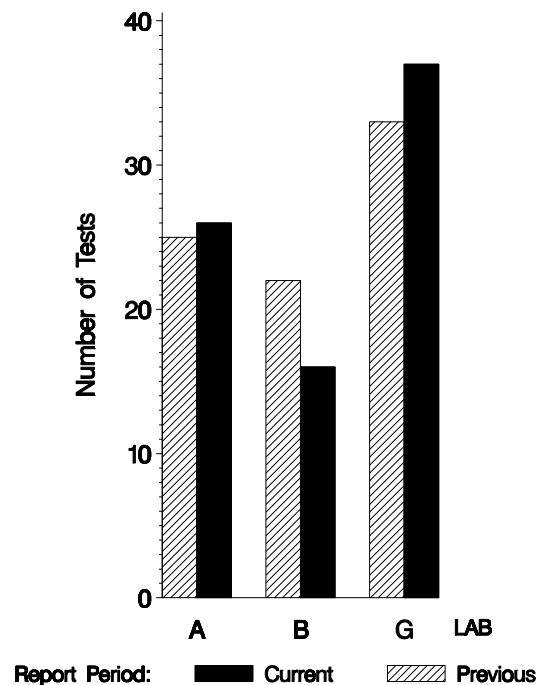
MEMORANDUM: 10-022  
DATE: May 25, 2010  
TO: Becky Grinfield,  
Chairman, Engine Oil Filterability Test Surveillance Panel  
FROM: Michael T. Kasimirsky *Michael T. Kasimirsky*  
SUBJECT: EOFT Testing from October 1, 2009 through March 31, 2010

A total of 79 EOFT tests were reported to the Test Monitoring Center during the period from October 1, 2009 through March 31, 2010. Following is a summary of testing activity this period.

	Reporting Data
Number of Labs	3

Tests reported this period were distributed as shown below:

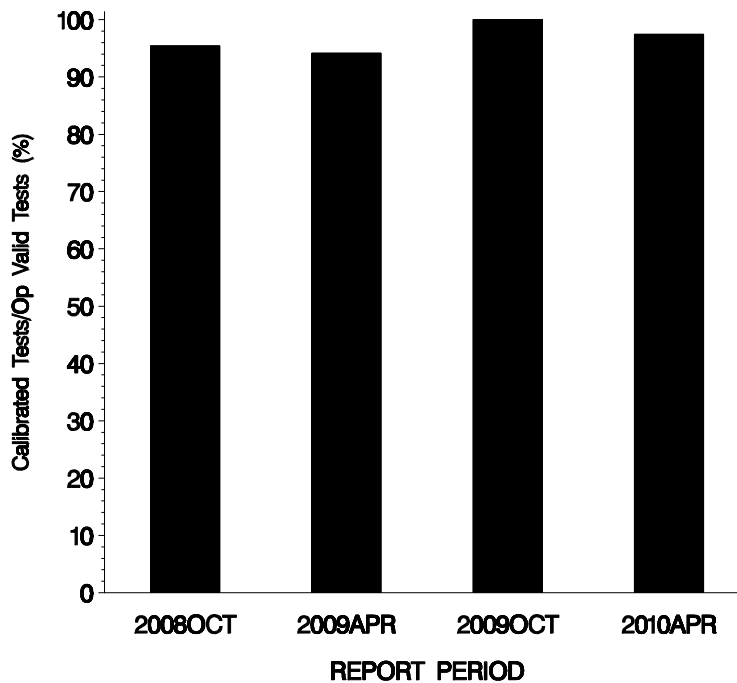
## NUMBER OF TESTS REPORTED BY LAB AND REPORT PERIOD



**Test Distribution by Oil and Validity**

			Totals		
			78-1	This Period	Last Period
Accepted for Calibration	AC	77	77	77	78
Accepted for Target Generation	AG	0	0	0	0
Rejected Mild	OC	0	0	0	0
Rejected Severe	OC	2	2	2	0
Operationally Invalid (lab)	LC	0	0	0	0
Operationally Invalid (lab/TMC)	RC	0	0	0	0
Aborted Calibration	XC	0	0	0	2
<b>Total</b>			<b>79</b>	<b>79</b>	<b>80</b>

**OPERATIONALLY VALID TESTS  
MEETING ACCEPTANCE CRITERIA**



The above chart shows the percentage of accepted operationally valid tests. Two tests, at two different test labs, failed this period for mild CFA results.

CAUSES FOR LOST TESTS

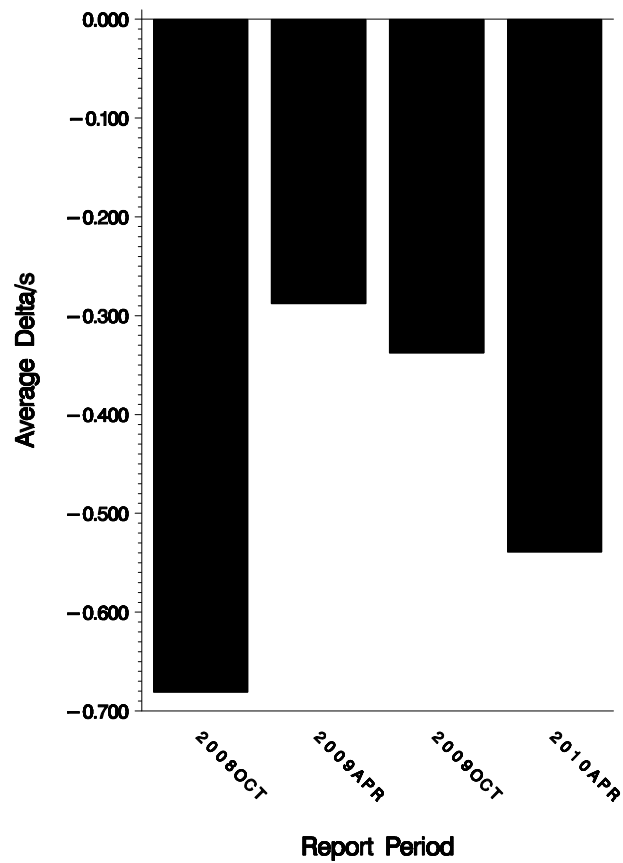
Lab	Cause	Oil	Validity			Loss Rate		
		78-1	LC	RC	XC	Lost	Starts	%
-	No Lost Tests					0	79	0%
		0	0	0	0			
	Starts	79	79	79	79			
	%	0%	0%	0%	0%			

AVERAGE Δ/s:

Average Δ/s by Lab

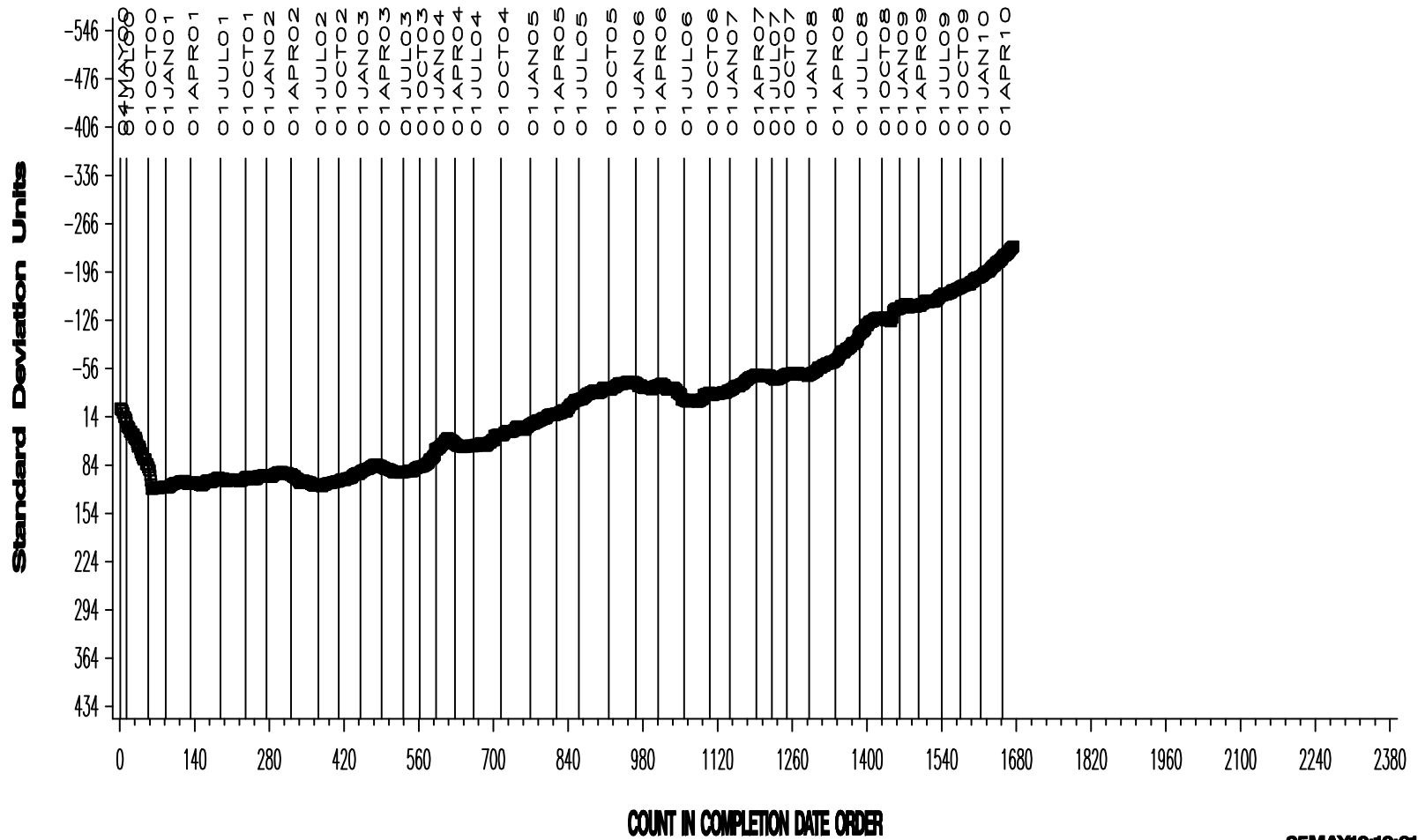
Lab	n	CIFAYI
A	26	-0.949
B	16	-1.048
G	37	-0.030
Industry	79	-0.539

**AVERAGE DELTA/S**



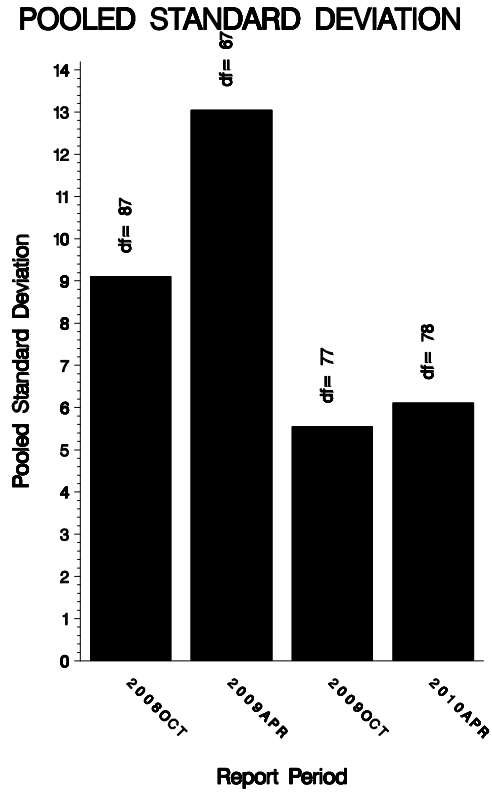
**EOFT INDUSTRY OPERATIONALLY VALID DATA**  
**20 - 25 ML CHANGE IN FLOWRATE AVERAGE (%)**

**CUSUM Severity Analysis**



POOLED S:

Pooled s this period was 6.11. Shown below are bar charts comparing the pooled s values for the EOFT test over the last four report periods.



STATUS OF REFERENCE OIL SUPPLY:

At the end of this report period, the testing oil supply stood as outlined in the following table:

Oil	Samples @ Labs	@ TMC	
		Samples	Gallons
78-1	37	1035	79.7
Total	37	1035	79.7

Be aware that this table presumes that all of each of these oils is dedicated to the EOFT test area. This is not the case, as oil 78-1 is also used in the EOWT test.

INFORMATION LETTERS:

No information letters were issued during this report period.

SUMMARY

- Over the course of this report period, CIFA severity as measured by cusum plotting was slightly mild overall.
- Precision as measured by pooled standard deviation has improved, but is still comparable to previous periods.

MTK/mtk/astm0410.doc/mem10-022.mtk.doc

c: F. M. Farber

J. A. Clark

EOFT Surveillance Panel

<ftp://ftp.astmtmc.cmu.edu/docs/bench/eoft/semiannualreports/eoft-04-2010.pdf>

Distribution: email