



# Test Monitoring Center

Carnegie Mellon University  
6555 Penn Avenue, Pittsburgh, PA 15206, USA

<http://astmtmc.cmu.edu>  
412-365-1000

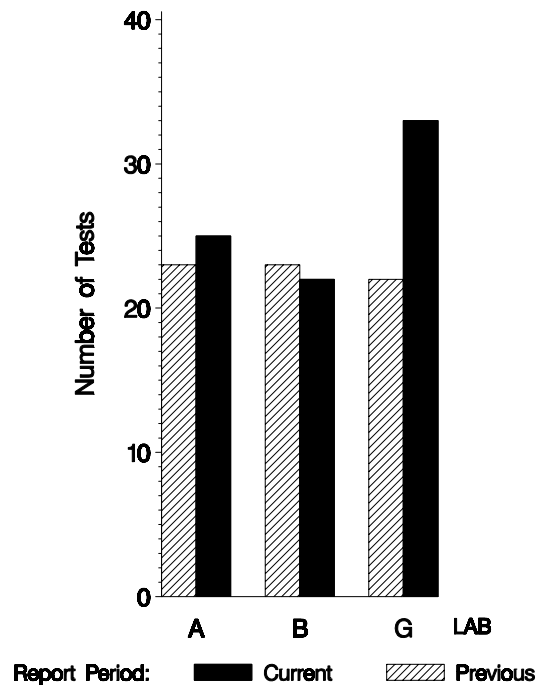
MEMORANDUM: 09-067  
DATE: December 3, 2009  
TO: Becky Grinfield,  
Chairman, Engine Oil Filterability Test Surveillance Panel  
FROM: Michael T. Kasimirsky *Michael T. Kasimirsky*  
SUBJECT: EOFT Testing from April 1, 2009 through September 30, 2009

A total of 80 EOFT tests were reported to the Test Monitoring Center during the period from April 1, 2009 through September 30, 2009. Following is a summary of testing activity this period.

| Reporting Data |   |
|----------------|---|
| Number of Labs | 3 |

Tests reported this period were distributed as shown below:

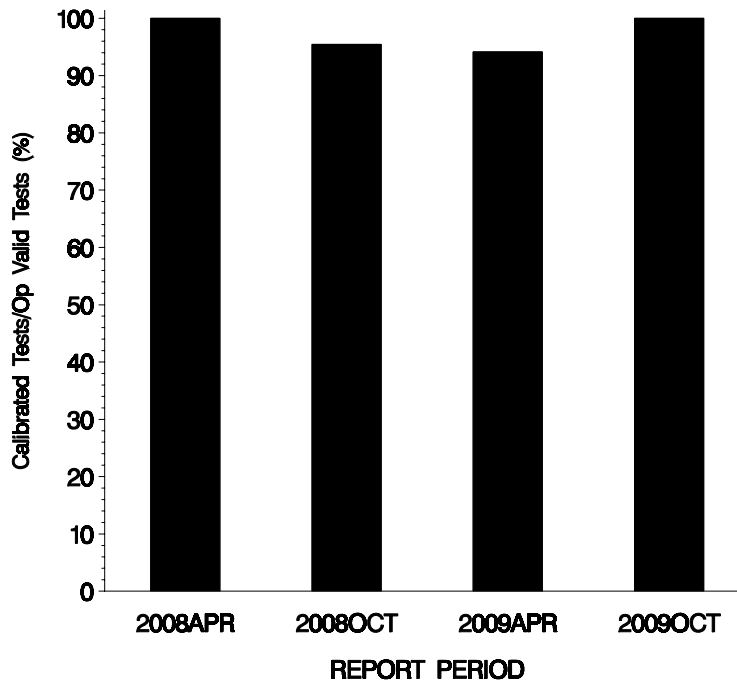
## NUMBER OF TESTS REPORTED BY LAB AND REPORT PERIOD



**Test Distribution by Oil and Validity**

|                                 |    |           | Totals      |             |
|---------------------------------|----|-----------|-------------|-------------|
|                                 |    |           | Last Period | This Period |
|                                 |    | 78-1      |             |             |
| Accepted for Calibration        | AC | 78        | 64          | 78          |
| Accepted for Target Generation  | AG | 0         | 0           | 0           |
| Rejected Mild                   | OC | 0         | 2           | 0           |
| Rejected Severe                 | OC | 0         | 2           | 0           |
| Operationally Invalid (lab)     | LC | 0         | 0           | 0           |
| Operationally Invalid (lab/TMC) | RC | 0         | 0           | 0           |
| Aborted Calibration             | XC | 2         | 0           | 2           |
| <b>Total</b>                    |    | <b>80</b> | <b>68</b>   | <b>80</b>   |

**OPERATIONALLY VALID TESTS  
MEETING ACCEPTANCE CRITERIA**



The above chart shows the percentage of accepted operationally valid tests. No tests failed this period.

CAUSES FOR LOST TESTS

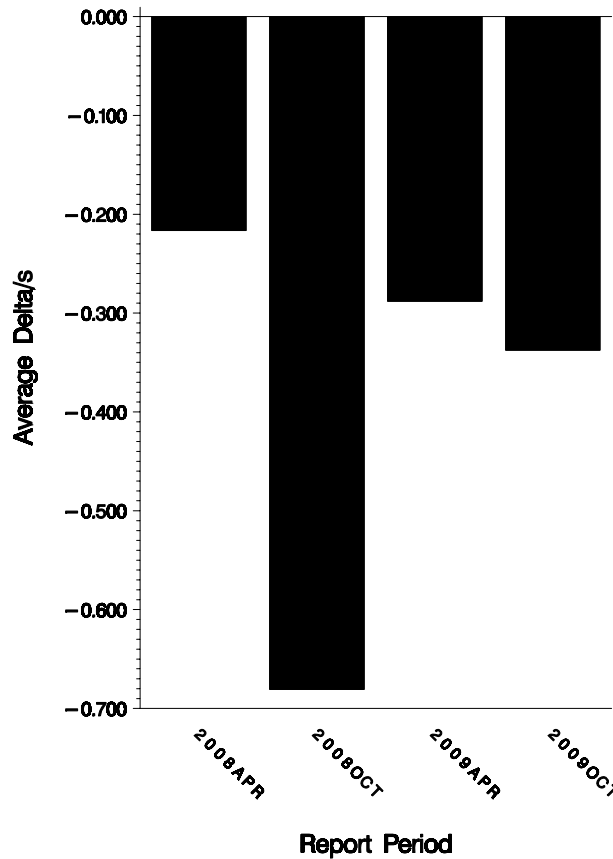
| Lab | Cause          | Oil  | Validity |    |    | Loss Rate |        |    |
|-----|----------------|------|----------|----|----|-----------|--------|----|
|     |                | 78-1 | LC       | RC | XC | Lost      | Starts | %  |
| A   | Sample Spilled | ●    |          |    | ●  | 1         | 25     | 4% |
| B   | Test Cancelled | ●    |          |    | ●  | 1         | 22     | 5% |
|     |                | 2    | 0        | 0  | 2  |           |        |    |
|     | Starts         | 80   | 80       | 80 | 80 |           |        |    |
|     | %              | 3%   | 0%       | 0% | 3% |           |        |    |

AVERAGE Δ/s:

Average Δ/s by Lab

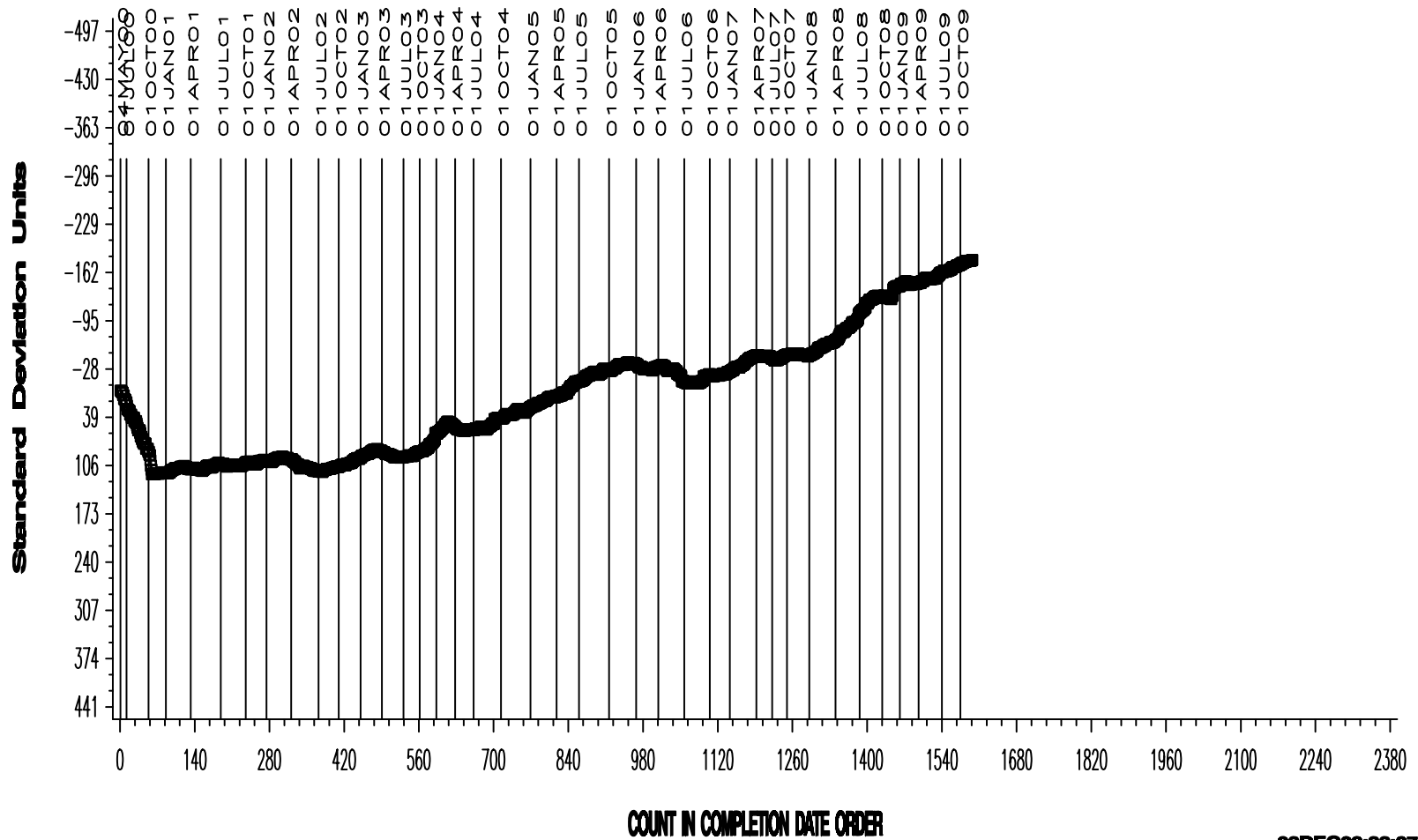
| Lab      | n  | CIFAYI |
|----------|----|--------|
| A        | 24 | -0.200 |
| B        | 21 | -0.655 |
| G        | 33 | -0.236 |
| Industry | 78 | -0.338 |

**AVERAGE DELTA/S**



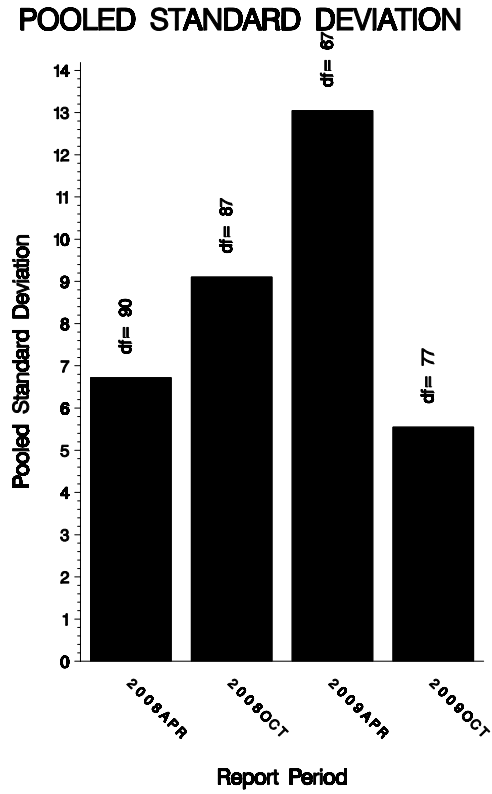
**EOFT INDUSTRY OPERATIONALLY VALID DATA**  
**20 - 25 ML CHANGE IN FLOWRATE AVERAGE (%)**

**CUSUM Severity Analysis**



POOLED S:

Pooled s this period was 5.55. Shown below are bar charts comparing the pooled s values for the EOFT test over the last four report periods.



STATUS OF REFERENCE OIL SUPPLY:

At the end of this report period, the testing oil supply stood as outlined in the following table:

| Oil   | Cans @ Labs | @ TMC |         |
|-------|-------------|-------|---------|
|       |             | Cans  | Gallons |
| 78-1  | 24          | 1283  | 98.8    |
| Total | 24          | 1283  | 98.8    |

Be aware that this table presumes that all of each of these oils is dedicated to the EOFT test area. This is not the case, as oil 78-1 is also used in the EOWT test.

INFORMATION LETTERS:

No information letters were issued during this report period.

SUMMARY

- Over the course of this report period, CIFA severity as measured by cusum plotting was slightly mild overall.
- Precision as measured by pooled standard deviation has improved, but is still comparable to previous periods.

MTK/mtk/astm1009.doc/mem09-067.mtk.doc

c: F. M. Farber

J. A. Clark

EOFT Surveillance Panel

<ftp://ftp.astmtmc.cmu.edu/docs/bench/eoft/semiannualreports/eoft-10-2009.pdf>

Distribution: email