



Test Monitoring Center

Carnegie Mellon University
6555 Penn Avenue, Pittsburgh, PA 15206, USA

<http://astmtmc.cmu.edu>
412-365-1000

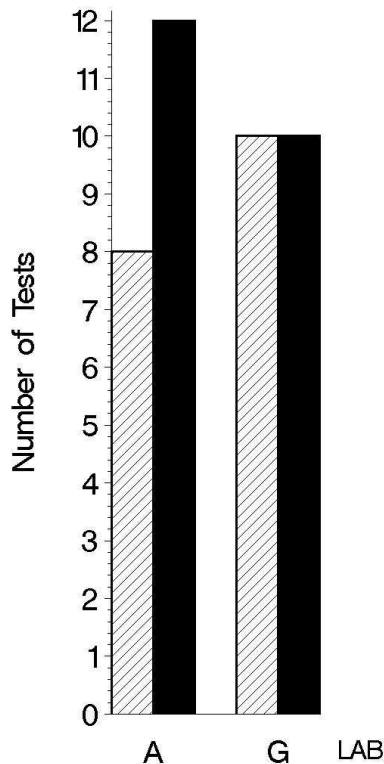
MEMORANDUM: 11-045
 DATE: November 2, 2011
 TO: Gil Reinhard, Chairman, CBT Surveillance Panel
 FROM: Michael T. Kasimirsky *Michael T. Kasimirsky*
 SUBJECT: CBT Testing from April 1, 2011 through September 30, 2011

A total of 22 CBT tests were reported to the Test Monitoring Center during the period from April 1, 2011 through September 30, 2011. Following is a summary of testing activity this period.

| | Reporting Data |
|----------------|----------------|
| Number of Labs | 2 |

Tests reported this period were distributed as shown below:

NUMBER OF TESTS REPORTED BY LAB AND REPORT PERIOD

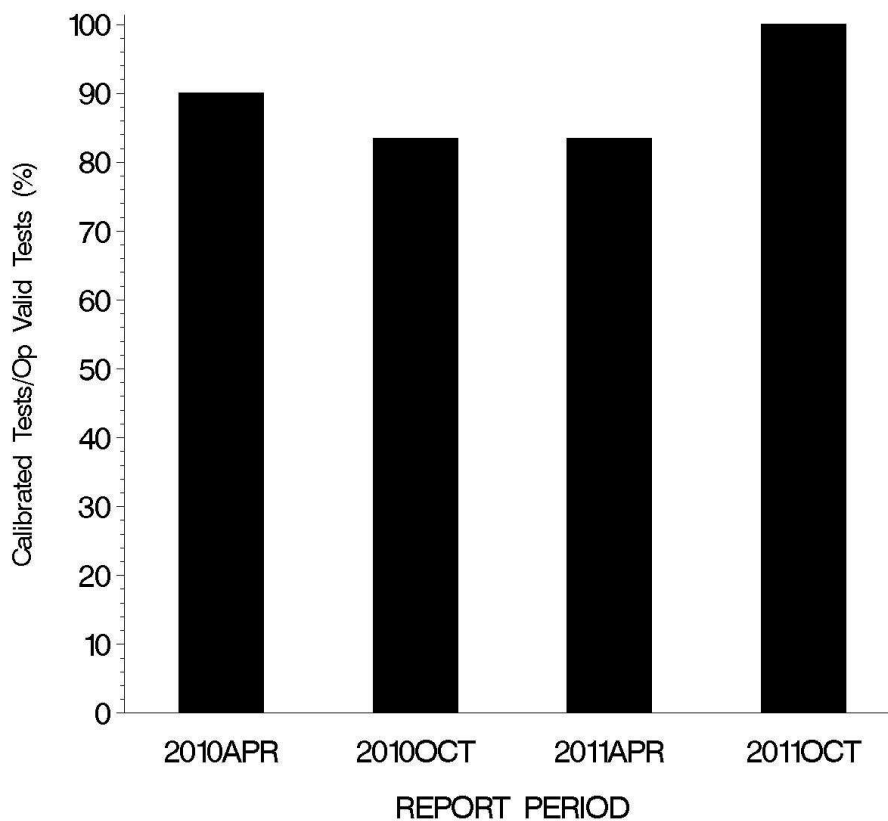


Report Period: Current Previous

Test Distribution by Validity

| | TMC Validity Codes | No. of Tests |
|--|--------------------|--------------|
| Operationally and Statistically Acceptable | AC | 10 |
| Failed Acceptance Criteria | OC | 0 |
| Operationally Invalid | LC, RC | 0 |
| Aborted | XC | 0 |
| Acceptable Donated Tests | AG | 12 |
| Invalid Donated Tests | LG | 0 |
| Total | | 22 |

**OPERATIONALLY VALID TESTS
MEETING ACCEPTANCE CRITERIA**



The above chart shows the percentage of accepted operationally valid tests. No tests failed to meet the acceptance criteria this period.

The reasons for failed, invalid, or aborted tests are shown in the following tables:

Summary of Reasons for Failed Tests

| | No. of Tests |
|-----------------|--------------|
| No failed tests | 0 |

Summary of Reasons for Invalid Tests

| | No. of Tests |
|------------------|--------------|
| No invalid tests | 0 |

Summary of Reasons for Aborted Tests

| | No. of Tests |
|------------------|--------------|
| No aborted tests | 0 |

Industry Severity Summary

The following table shows the average Δ/s , by laboratory and for the industry overall, for both copper and lead concentration for this ASTM report period.

Average Δ/s by Lab

| Lab | n | CUC | PBC |
|----------|----|--------|--------|
| A | 6 | -1.313 | -1.243 |
| G | 4 | -1.184 | 0.025 |
| Industry | 10 | -1.262 | -0.736 |

Individual test results can be found on the TMC Web Page at the following link:

<ftp://ftp.astmtmc.cmu.edu/refdata/bench/cbt/data/>

The plots of summation delta/s from target for change in copper and change in lead, respectively, are shown on the following pages. Both copper and lead concentration results are continuing to trend mild.

CBT INDUSTRY OPERATIONALLY VALID DATA



COPPER CHANGE (ppm)

CUSUM Severity Analysis

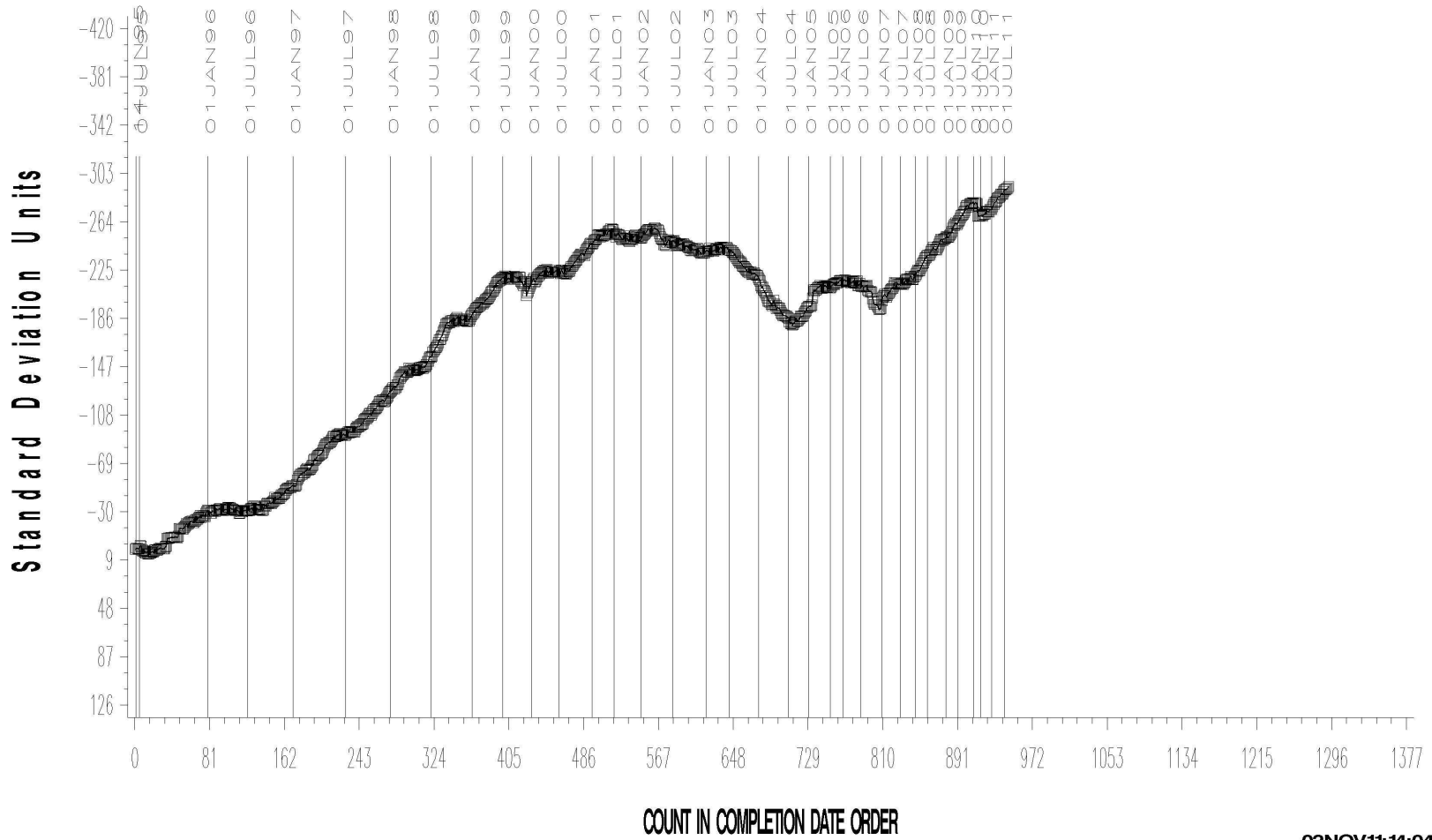


CBT INDUSTRY OPERATIONALLY VALID DATA



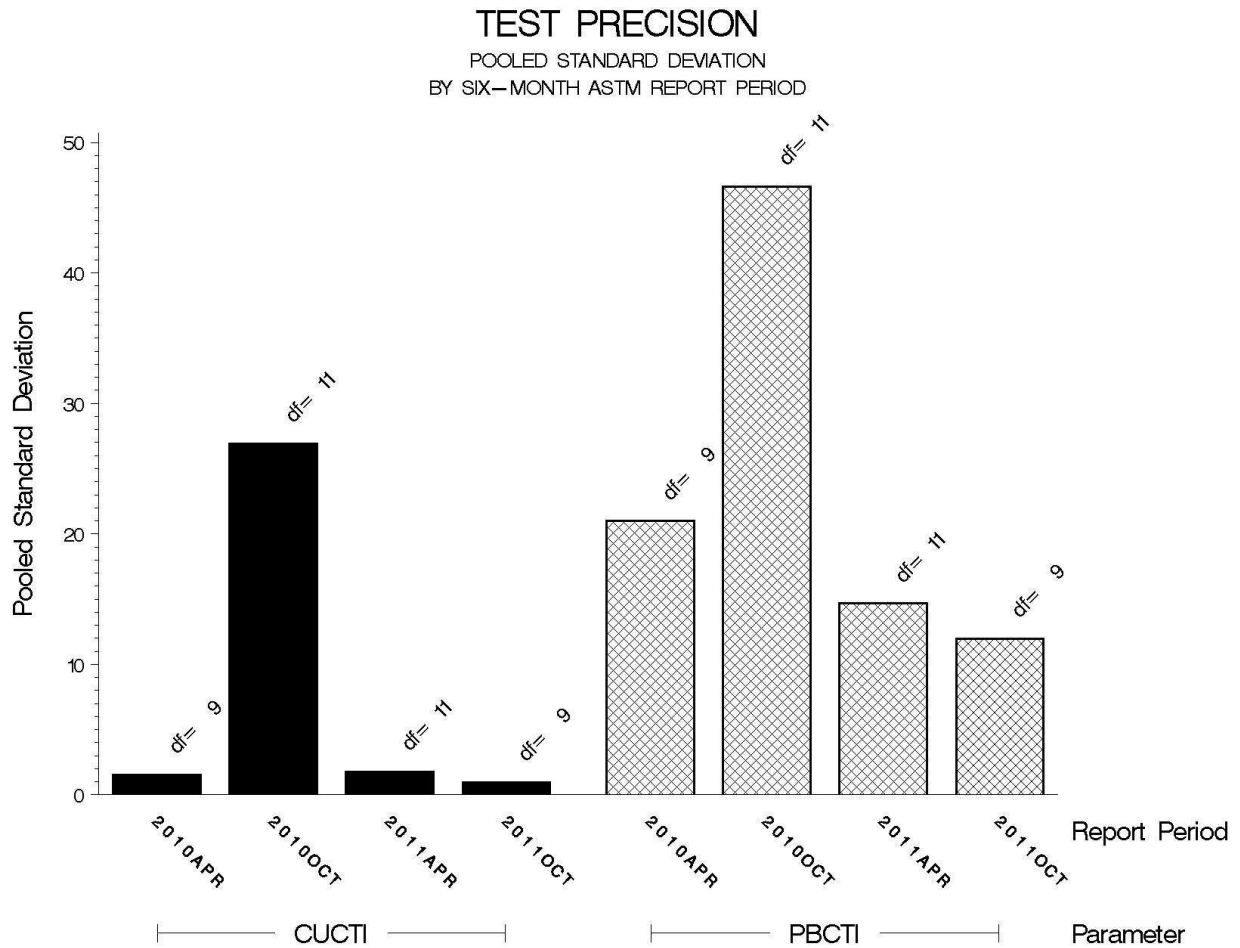
LEAD CHANGE (ppm)

CUSUM Severity Analysis



POOLED S:

Precision estimates, by report period are depicted below. Precision estimates for both copper and lead have improved slightly.



STATUS OF REFERENCE OIL SUPPLY:

At the end of this report period, the testing oil supply stood as outlined in the following table:

| | | @ TMC | |
|-----|----------------|---------|---------|
| Oil | Samples @ Labs | Samples | Gallons |
| 43 | 16 | 1515 | 47.4 |

INFORMATION LETTERS:

No information letters were issued this period.

SUMMARY

- Over the course of this report period, both copper and lead severity as measured by cusum plotting continued the existing mild trend.
- Precision as measured by pooled standard deviation is slightly better than previous periods for both copper and lead concentration.

MTK/mtk/astm1011.doc/mem11-045.mtk.doc

c: F. M. Farber

J. A. Clark

CBT Surveillance Panel

<ftp://ftp.astmtmc.cmu.edu/docs/bench/cbt/semiannualreports/cbt-10-2011.pdf>

Distribution: email