



Test Monitoring Center

@ Carnegie Mellon University
6555 Penn Avenue, Pittsburgh, PA 15206, USA

<http://astmtmc.cmu.edu>
412-365-1000

MEMORANDUM: 15-013
DATE: May 6, 2015
TO: Gil Reinhard, Chairman, CBT Surveillance Panel
FROM: Michael T. Kasimirsky *Michael T. Kasimirsky*
SUBJECT: CBT Testing from October 1, 2014 through March 31, 2015

A total of 18 CBT tests were reported to the Test Monitoring Center during the report period from October 1, 2014 through March 31, 2015.

Please find attached a summary of testing activity this period.

MTK/mtk/astm0415.doc/mem15-013.mtk.doc

cc: F. M. Farber

J. A. Clark

CBT Surveillance Panel

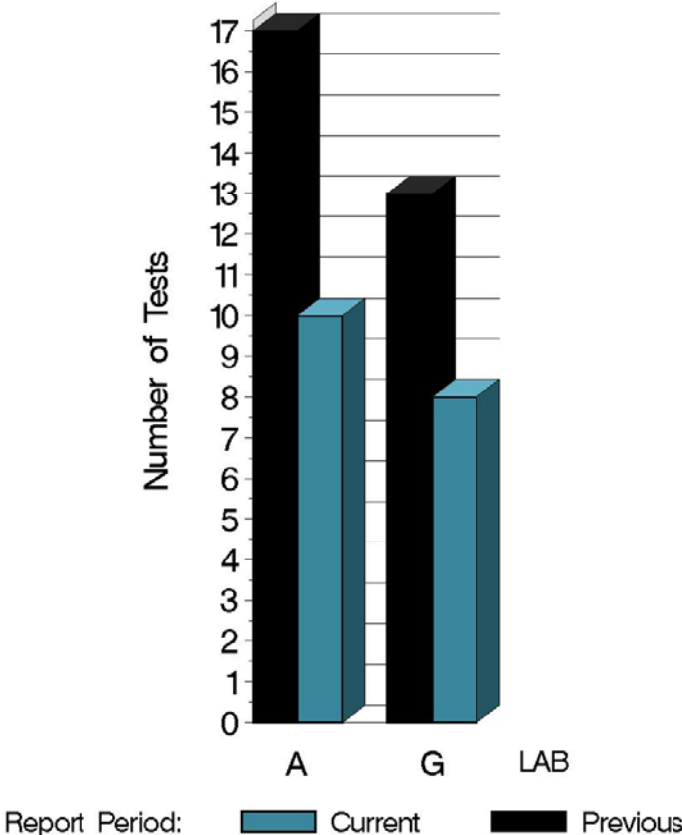
<ftp://ftp.astmtmc.cmu.edu/docs/bench/cbt/semiannualreports/cbt-04-2015.pdf>

Distribution: email

CBT (D 5968)

	Reporting Data
Number of Labs	2

NUMBER OF TESTS REPORTED BY LAB AND REPORT PERIOD



10:22:05 05MAY2015

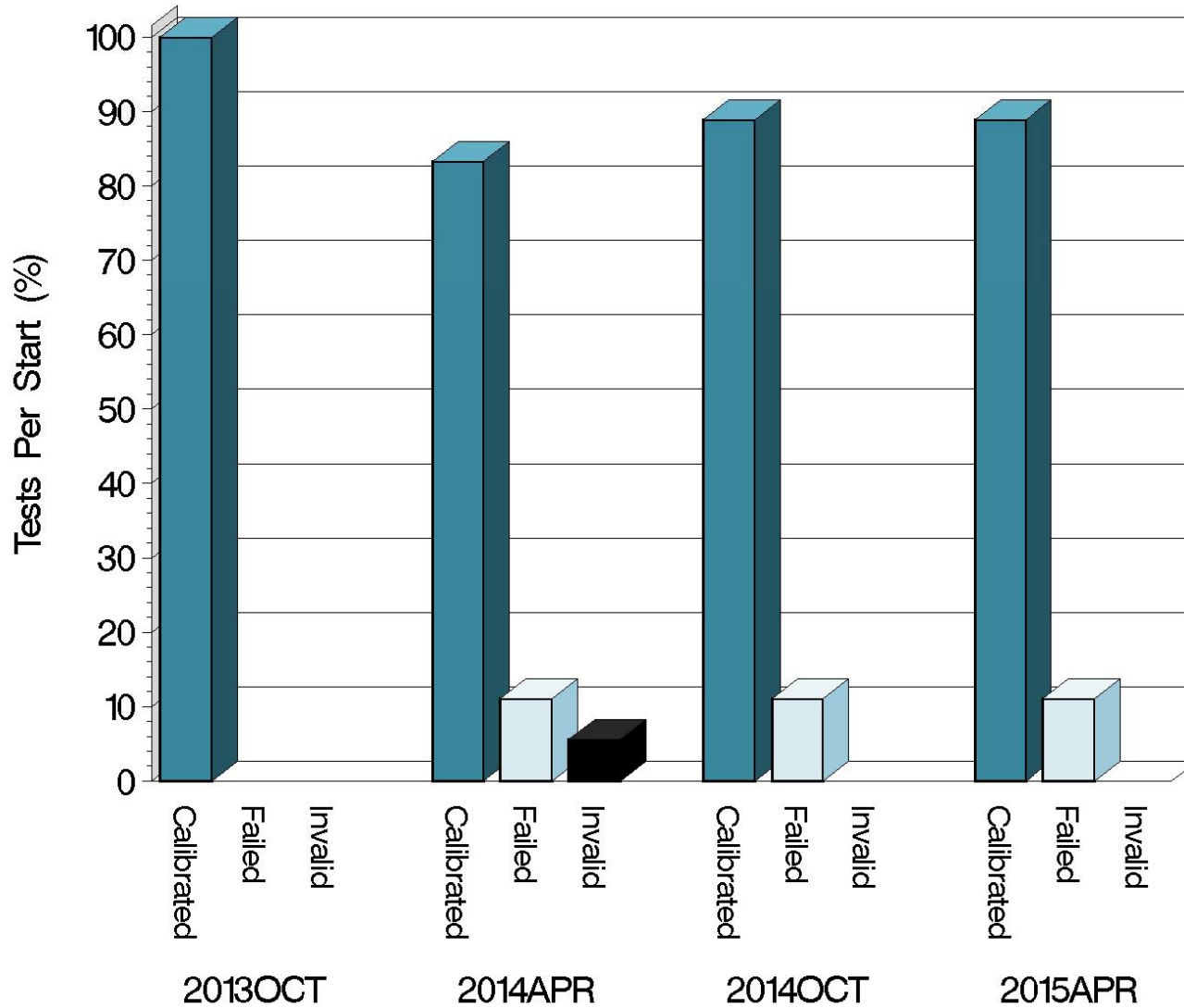
CBT (D 5968)

Test Distribution by Validity

		Number of Tests
Accepted for Calibration	AC	16
Rejected	OC	2
Invalidated	LC	0
Aborted	XC	0
Hardware Approval run	NI	0
Unacceptable Approval run	MI	0
Invalid Approval run	LI	0
<hr/>		
Total		18

CBT (D 5968)

CALIBRATION ATTEMPT SUMMARY



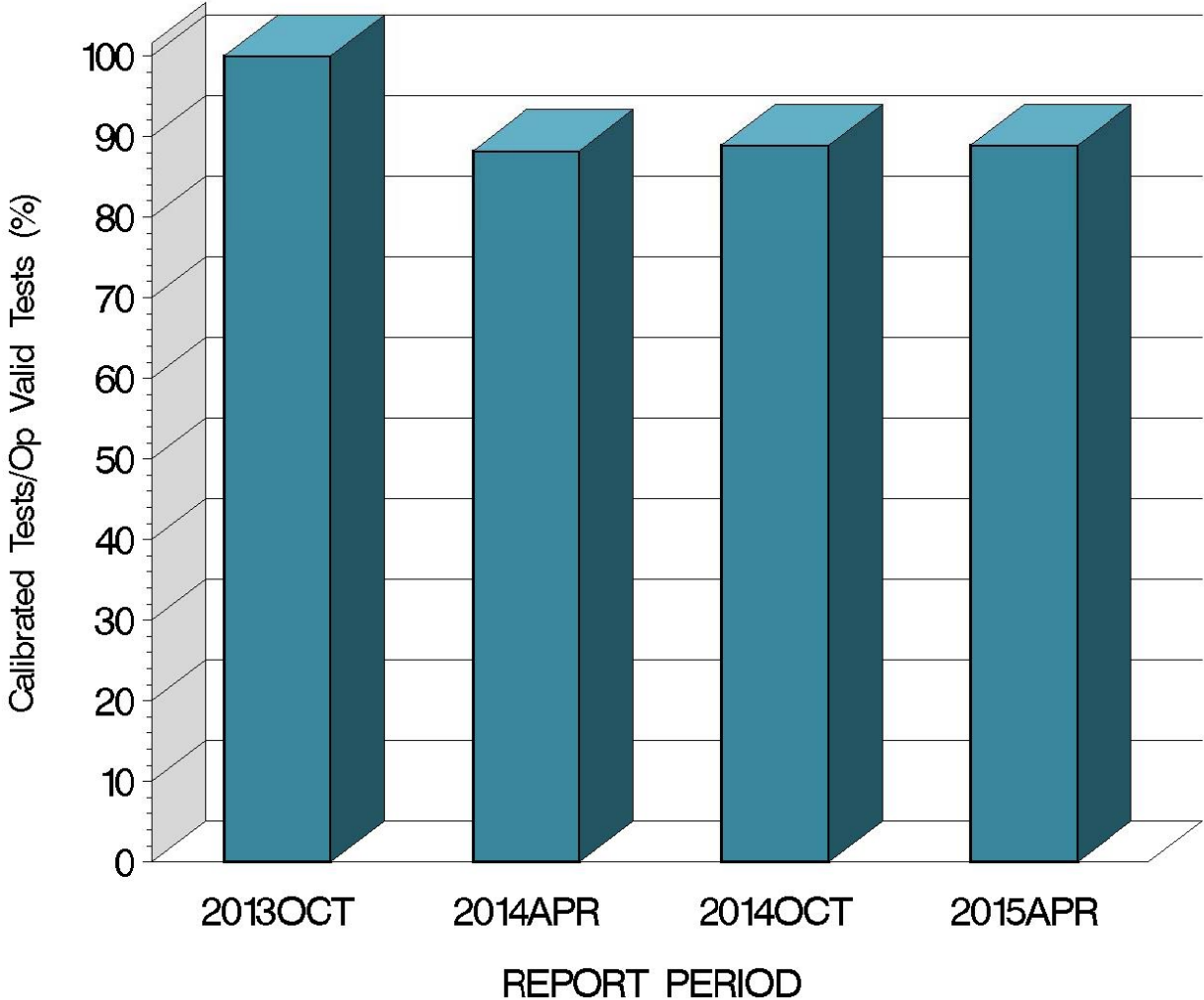
Resolution

Report Period

10:22:35 05MAY2015

CBT (D 5968)

OPERATIONALLY VALID TESTS
MEETING ACCEPTANCE CRITERIA



10:22:35 05MAY2015

CBT (D 5968)

CAUSES FOR LOST TESTS

Summary of Reasons for Failed Tests	No. of Tests
Mild Lead & Copper Concentration	2

Summary of Reasons for Invalid Tests	No. of Tests
No tests were invalid this period	0

Summary of Reasons for Aborted Tests	No. of Tests
No tests were aborted this period	0

CBT (D 5968)

Average Δ /s By Laboratory			
Lab	n	CUC	PBC
A	10	-1.755	-1.98667
G	8	-1.171	-0.80083
Industry	18	-1.496	-1.45963

Individual test results can be found on the TMC Web Page at the following link:

<ftp://ftp.astmtmc.cmu.edu/refdata/bench/cbt/data/>

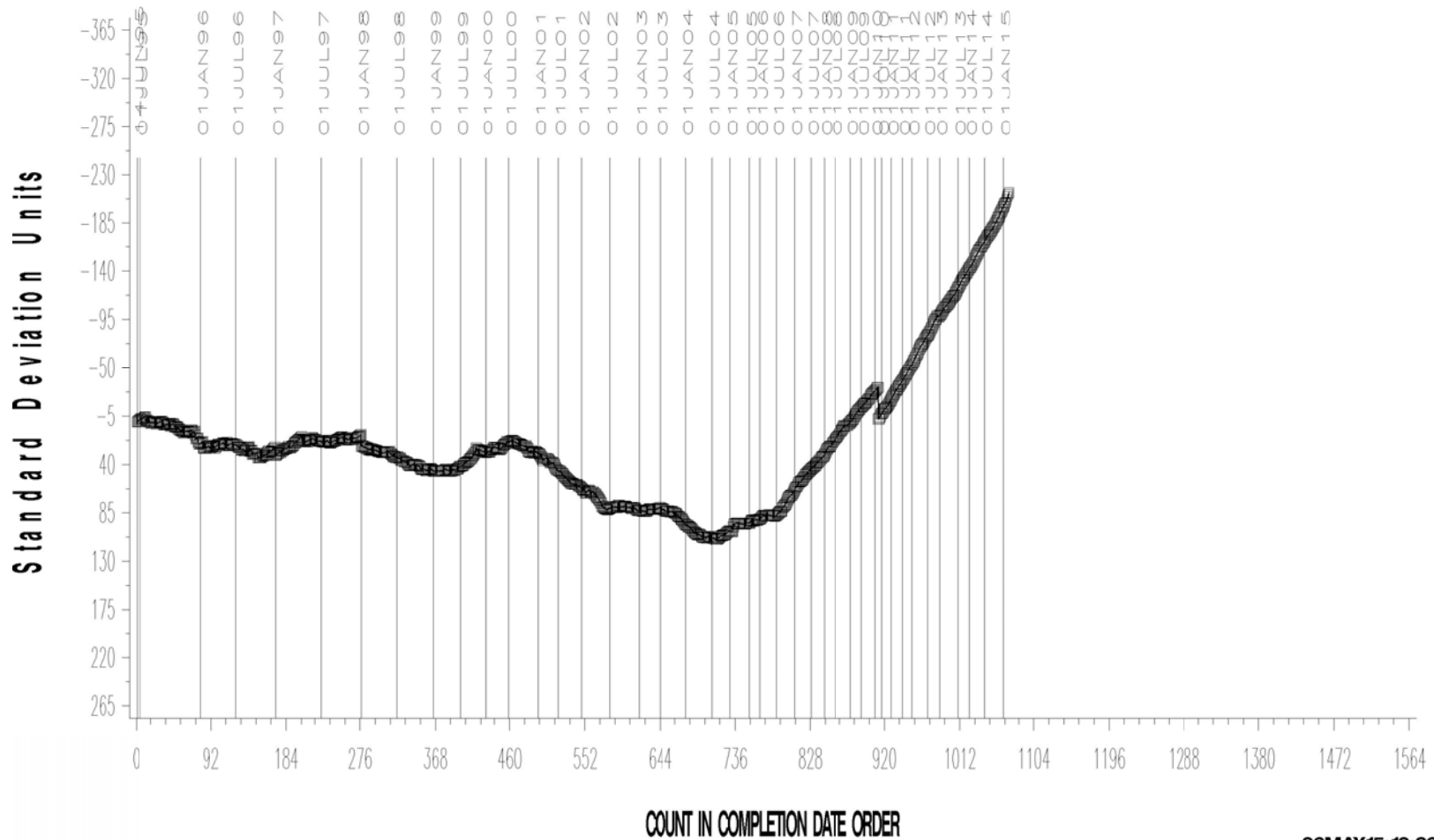
CBT (D 5968)

CBT INDUSTRY OPERATIONALLY VALID DATA



COPPER CHANGE (ppm)

CUSUM Severity Analysis



06MAY15:10:36



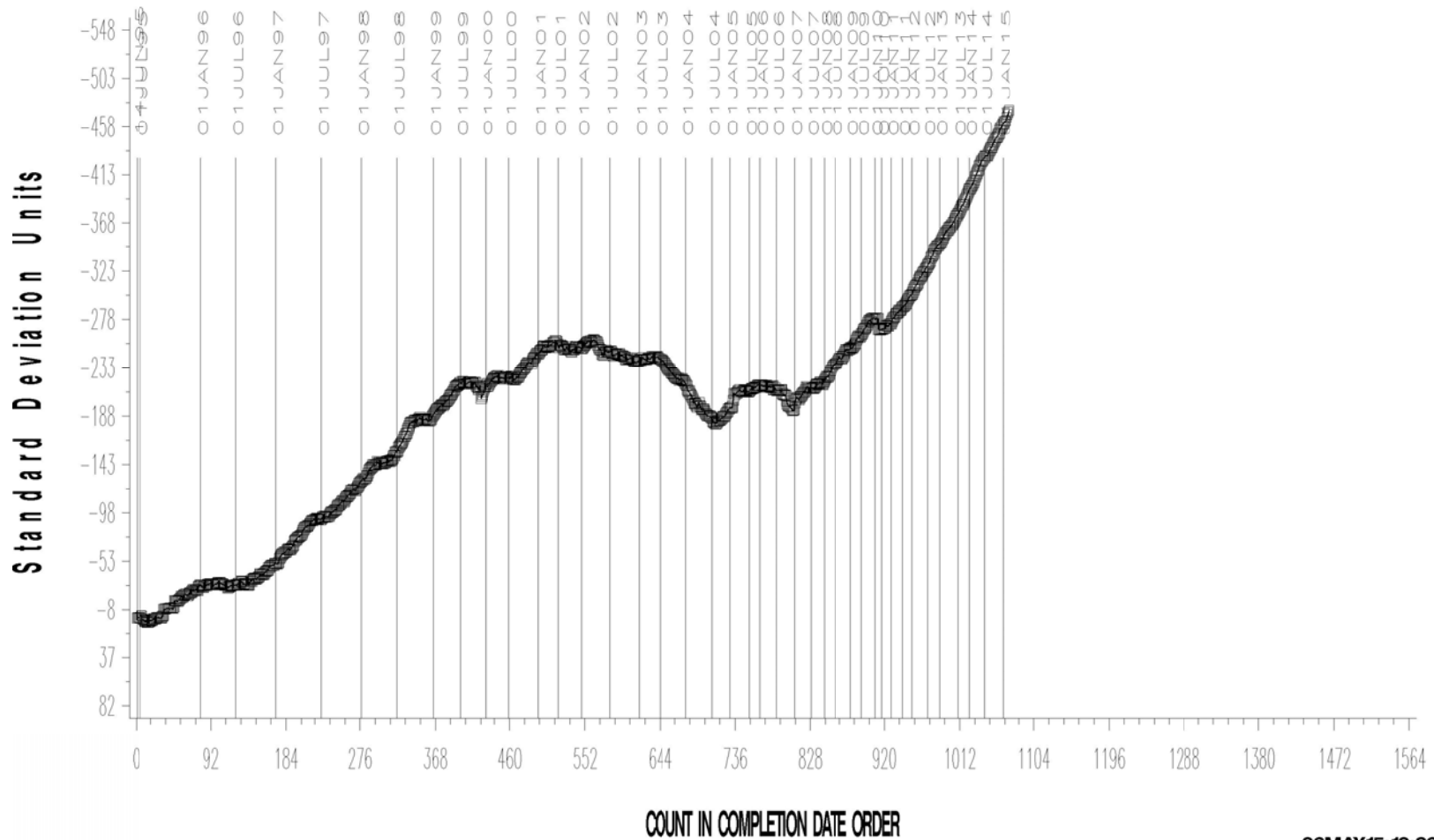
CBT (D 5968)

CBT INDUSTRY OPERATIONALLY VALID DATA



LEAD CHANGE (ppm)

CUSUM Severity Analysis



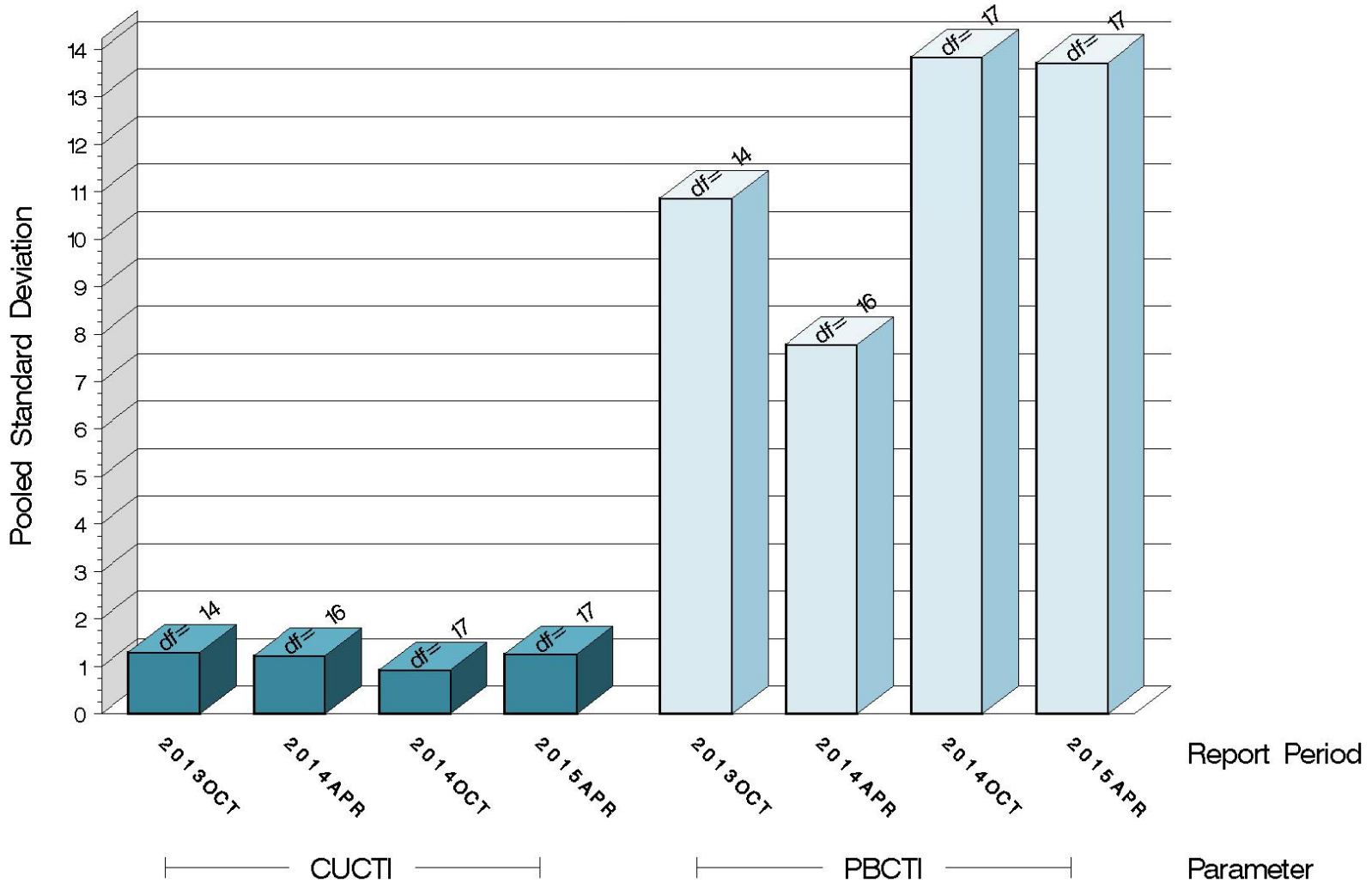
06MAY15:10:36



CBT (D 5968)

TEST PRECISION

POOLED STANDARD DEVIATION
BY SIX-MONTH ASTM REPORT PERIOD



10:22:35 05MAY2015

CBT (D 5968)

SUMMARY OF SEVERITY & PRECISION

Severity

Over the course of this report period, both copper and lead severity, as measured by CUSUM plotting, continued the existing mild trend.

Precision

Pooled s for this period is 1.26 for copper and 13.72 for lead.

Precision, as measured by pooled standard deviation, is slightly worse than previous periods for copper and is slightly worse than previous periods for lead, but is still within historical levels.

CBT (D 5968)

INFORMATION LETTERS

No CBT Information Letters were issued this period.

CBT (D 5968)

STATUS OF REFERENCE OIL SUPPLY

Oil	Samples @ Labs	@ TMC	
		Samples (4 oz)	Gallons
43	37	1312	41.0